



# Linking Climate Change & Human Health: Partnerships and Progress at NH DHHS

Matt Cahillane, NH DHHS  
September 18, 2015  
Concord, NH

# Climate Change & Human Health

Changing temperature and precipitation patterns can influence:

- Excessive heat and heat stress
- Pollen and allergies/asthma
- Seasons & vector-borne disease
- Severe weather and injury/deaths



Source: Oregon BRACE Program

# Partnerships in the Health Sector

## Improving Tracking & Surveillance

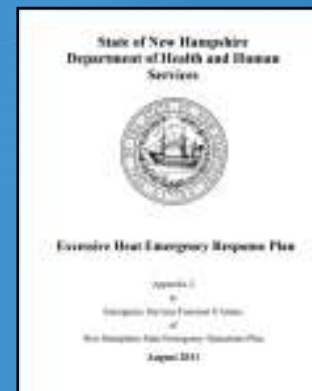
### Within DHHS

- Environmental Public Health Tracking Network
- NH DHHS WISDOM



### With other State agencies

- DES, Safety and HSEM
- UNH & Plymouth projects



### With national partners

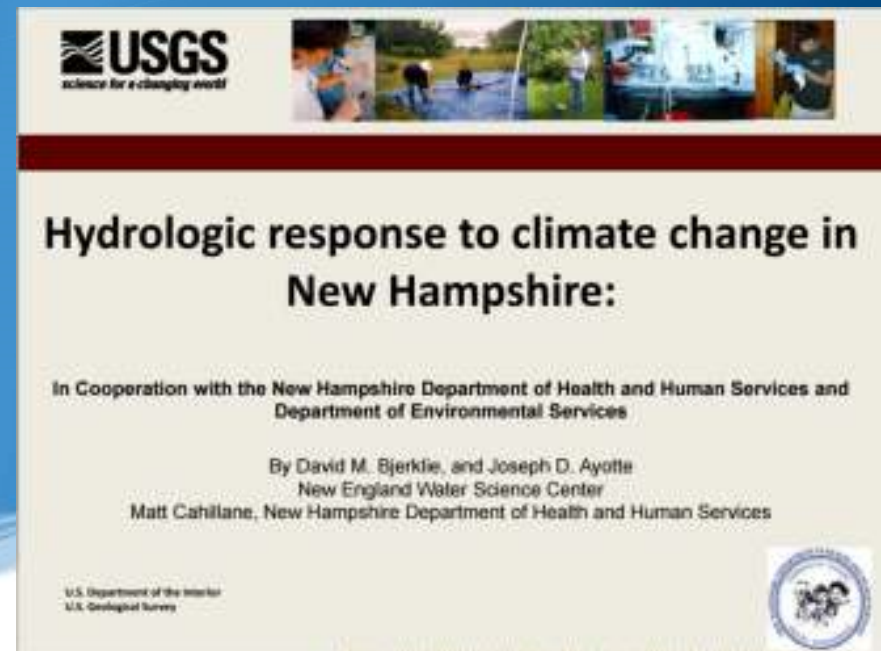
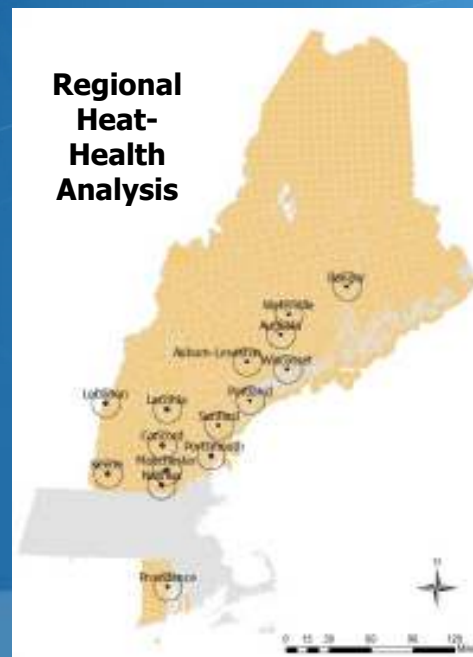
- CDC Climate Ready States & Cities
- NWS Grey, ME





# Research Collaboration & Analysis

- Future Climate Projection Project with UNH
- Northeast Regional Heat Analysis with RI and ME
- Work with DES and USGS on Hydrologic Extremes



# Regional Action on Climate

- Climate Adaptation Workgroups
  - Coastal CAW
  - Upper Valley AW
- Public Health Network Climate mini-grants
  - Lakes Region
  - Upper Valley



# Take Home Messages

1. Severe weather and climate change pose direct and indirect health effects
2. Climate change affects some people more than others
3. Adapting now will reduce costs later
4. Mitigation efforts to reduce GHGs will have co-benefits for human health

# For more information:

Matt Cahillane  
Climate and Health Program  
603-271-4072  
[mcahilla@dhhs.state.nh.us](mailto:mcahilla@dhhs.state.nh.us)

Or visit our website  
[www.dhhs.nh.gov/dphs/climate/](http://www.dhhs.nh.gov/dphs/climate/)



# Weather Fatalities

