



New Hampshire

DEPARTMENT OF SAFETY DIVISION OF ADMINISTRATION EDI Implementation Guide

Version 1.1

**September 2012
ANSI ASC X12 V.4030**

**(Adapted from the FTA Electronic Combined Reporting Methods
Implementation Guide)**

Table of Contents

Chapter 1 - Introduction.....	1-2
General Information	1-2
Advantages	1-2
Contact Information.....	1-2
Understanding EDI.....	1-3
EDI Version.....	1-3
EDI Filing Method	1-3
EDI 813 File Naming Convention.....	1-4
EDI File Structure.....	1-4
Available EDI Filing	1-5
EDI 813 Timely Filing	1-5
EDI 813 Certification Procedures.....	1-6
EDI 813 Production Filing Procedures.....	1-6
FTA Review	1-7
Chapter 2 - Motor Fuels X12 Data Model.....	2-8
Chapter 3 – X12 Attribute and Separator Conventions	3-9
Chapter 4 – X12 EDI Envelope	4-10
Envelope Flows	4-10
Interchange Control Header Description.....	4-11
Functional Group Header Description.....	4-12
Functional Group Trailer Description	4-12
Interchange Control Trailer Description.....	4-12
Chapter 5 - 813 EDI Combined Reporting	5-13
ANSI ASC X12 – 813 EDI Standard	5-13
813 Structure	5-15
813 Map Flow	5-16
Transaction Set - Supplier/Distributor Report (SDR).....	5-24
Transaction Set – Transporter Report (CCR).....	5-27
Summary Information.....	5-29
New Hampshire Summary Mapping.....	5-32
Schedules.....	5-33
Transaction Set Trailer Description	5-41
Appendix A - EDI Trading Partner Agreement.....	A-42
Appendix B - Filing Procedures	B-46
Form MFD 1-S/AF, Motor Fuel and Aviation Fuel Distributor Report.	B-46
Forms MFD Schedule of Receipts #2, #2E, #2F, #3 and #4.	B-46
Forms MFD Schedule of Disbursements #5, #5X, #6, #6F, #7, #8, and #9.	B-47
Forms MFD Schedule of Tax-Paid Credits.	B-48
Form RT 51, Oil Discharge and Pollution Control Report.....	B-49
Form RT 113, Motor Fuel and Petroleum Transporter’s Report	B-52
Form RT 113 - Schedules 14A, 14B and 14C.....	B-53
Appendix C - New Hampshire Schedules.....	C-55
Appendix D - New Hampshire Product Codes	D-56

Table of Contents

Appendix E - Summary Codes / TIA Codes	E-57
Appendix F - Transaction Type Mode Codes	F-60
Appendix G - USA State, Canadian Province/ Territory & Mexican State Codes	G-61
Appendix H - Revisions.....	H-62
Appendix I - Amended Reports.....	I-63
Appendix J - Sample EDI Files	J-64
MFD 1-S/AF Motor Fuel and Aviation Fuel Distributor Report (SDR)	J-64
MFD 1-S/AF Motor Fuel and Aviation Fuel Distributor Report (SDR) - No Activity	J-66
MFD 1-S/AF Motor Fuel and Aviation Fuel Distributor Report (SDR) - Amended Filing	J-67
RT-51 Oil Discharge & Pollution Control Report (SDR)	J-68
RT113 Motor Fuel and Petroleum Products Transporter Report (CCR)	J-70

References

ASC X12

The Accredited Standards Committee
Subcommittee - X12G – Government
Task Group 2 (X12G/TG2)
Tax Information Interchange Development
TIGERS
World Wide Web site: <http://www.x12.org>

ASC X12 Standards Manual

Publications Manager, Publications Department
Data Interchange Standards Association (DISA)
333 John Carlyle Street, Suite 600, Alexandria, VA 22314
Phone: 703-548-7005 FAX: 703-548-5738
E-mail: publications@disa.org
World Wide Web site: <http://www.disa.org>

FTA Uniformity Guide

Motor Fuel Tax Section, Uniformity Project
Federation of Tax Administrators (FTA)
444 N. Capitol St., NW, Washington, DC 20001
Contact: Cindy Anders-Robb
Phone: (307) 632-4144 Fax: (307) 632-3234
E-mail: cindy.anders-robb@taxadmin.org
World Wide Web site: <http://www.taxadmin.org>

It is recommended that you refer to the FTA Uniformity Guide to implement the Motor Fuels Uniformity methods.

Chapter 1 - Introduction

The New Hampshire Department of Safety (Department) is implementing an electronic filing program. The following reports will be accepted in the Department's electronic filing program:

- MFD 1-S/AF Motor Fuel and Aviation Fuel Distributor Report
- RT113 Motor Fuel and Petroleum Products Transporter Report
- RT-51 Oil Discharge & Pollution Control Report

General Information

Electronic Data Interchange (EDI) is the exchange of business documents from one company's computer to another company's computer in machine-processable formats. Purchase orders, invoices, and tax forms can all be exchanged via EDI. Using EDI to exchange business information reduces the expense associated with processing paper (sorting mail, opening envelopes, logging in of documents, etc.). In addition, the costs, errors and time delays associated with data entry are also reduced. Diverse industries have found that EDI makes tremendous economic sense. Government agencies also see the value in reducing the paper-intensive filing of motor fuel reports by implementing EDI.

Advantages

Trading partners using EDI are able to reduce paperwork and costs of handling that paperwork.

- Filing via EDI eliminates postal delays and associated late filing penalties.
- E-filing greatly reduces data entry errors.
- E-filing allows Fuel Tracking and Cross Matching to be automated, giving the Department tools to reduce fraud, and therefore giving fuel distributors a level playing field.
- Filing via EDI provides a complete audit trail of tax forms and schedules.

This EDI Implementation guide follows version 4030 of the EDI ANSI ASC X12 standards. This guide's purpose is to assist you in implementing and filing EDI for motor fuel reports and associated schedules.

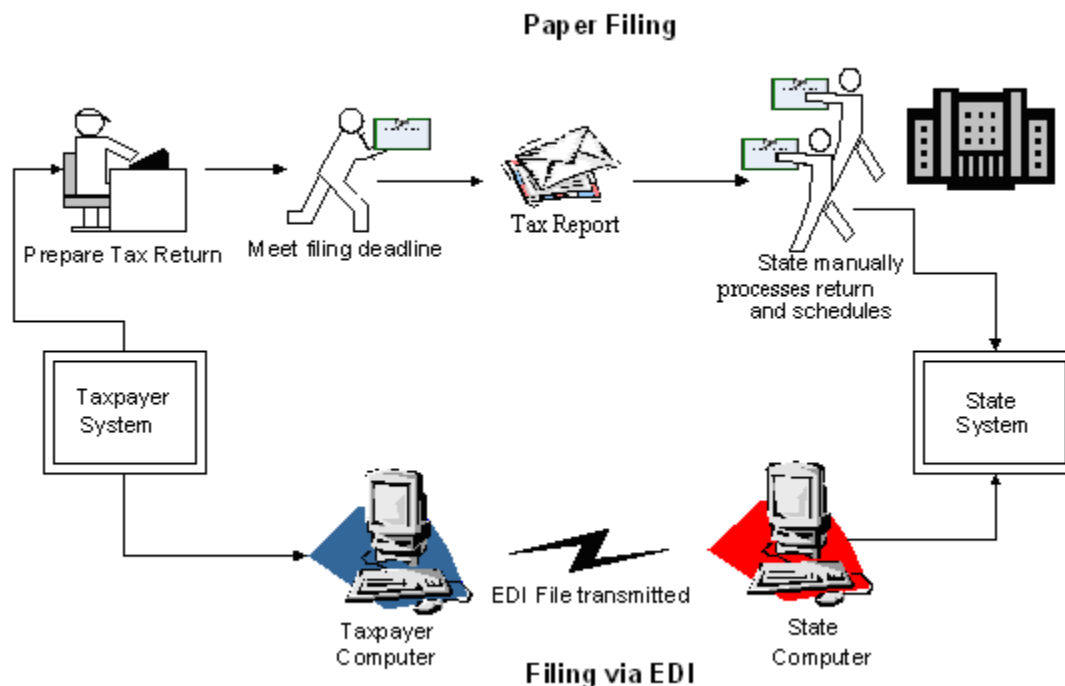
Contact Information

EDI Coordinator:	Karen Colby
Phone:	603-223-8063
Business Contact:	Eric Marshall
Phone:	603-223-8067
Road Toll E-mail:	RoadToll@dos.nh.gov
EDI E-mail:	NHEDIRoadToll@dos.nh.gov

Understanding EDI

EDI is used extensively in industry. For example, the retail and manufacturing industries submit purchase orders, cut invoices, process shipping notifications, and remit payments; all electronically. Accuracy is increased and cost is reduced. Because documents are filed electronically, businesses no longer need to store large quantities of paper documents.

EDI may seem complex, but once the basics are understood, the concept is really quite simple. As stated earlier, EDI is a method to electronically exchange business documents using a standard format. To facilitate this exchange of documents, two things are needed. First, the taxpayer (or trading partner) needs a method to send and receive electronic documents. Second, the taxpayer needs software to translate schedules and tax reports into the standard EDI format.



EDI Version

New Hampshire is using the ANSI ASC X12 Version Release 004030 EDI standards for the EDI 813 (Electronic Filing of Tax Report Data). Many states have implemented, or are planning on implementing, the EDI 813 transaction set for motor fuel tax filing. Previous releases of the EDI 813 transaction set allowed for individual state variations in EDI filing. Version 4030 promotes uniformity in motor fuel tax filing. As more states migrate to the 4030 version, filers will be able to create a more generic EDI map, reducing the effort needed to track individual state variations.

EDI Filing Method

The Department will accept EDI files via a secure web application. For more information about filing procedures, see Appendix B on Filing Procedures.

EDI 813 File Naming Convention

Format: **NH_yyyymm_fein_xxxx_nn.edi**

- “NH” is the state abbreviation
- “yyymm” is the reporting period year and month
- “fein” is the Federal Employer Identification Number
- “xxxx” represents the reports included in the file
 - “all” if more than one report is included in a single file
 - “mfd” if only the Motor Fuel and Aviation Fuel Report is included
 - “odpc” if only the Oil Discharge and Pollution Control Report is included
 - “trns” if only the Transporter Report is included
- “nn” represents an original or amended sequence
 - “00” for an original report (including resubmissions of an original)
 - “01” for the first amended report
 - “02” for the second amended report
 - etc.

Example file names:

NH_200812_111222333_all_00.edi
 NH_200812_444000777_mfd_00.edi
 NH_200812_333222333_odpc_00.edi
 NH_200812_333222333_trns_00.edi

The Department will acknowledge an EDI filing by providing a status message on its website:

The Department prefers to receive all reports in a single file (using separate 813 Transaction Sets). However, the filer can choose to send each report in a separate file.

EDI File Structure

Each 813 (report) must be submitted with its own ST loop (ST segment through SE segment). Multiple ST-SE loops can be submitted under one ISA envelope or each can be sent under a separate ISA envelope. However, since the ISA15 controls the test/production indicator; test and production reports cannot be combined under the same ISA envelope.

Available EDI Filing

The following reports may be filed via EDI:

- MFD 1-S/AF Motor Fuel and Aviation Fuel Distributor Report
- Supporting schedules for MFD 1-S/AF
 - Distributor Schedule of Receipts
 - Distributor Schedule of Disbursements
 - Distributor Schedule of Credits
- RT-51 Oil Discharge & Pollution Control Report
- Supporting schedules for RT-51
 - Schedule of Deliveries
- RT113 Motor Fuel and Petroleum Products Transporter Report
- Supporting schedules for RT113
 - Schedule of Deliveries

EDI 813 Timely Filing

The due date for filing your Motor Fuel Tax Report and Schedules via EDI is the same as if you had filed a paper report. This means the EDI filing must be both transmitted and received by the Department on or before the due date.

Due dates for each report follow:

MFD 1-S/AF Motor Fuel and Aviation Fuel Distributor Report

The Motor Fuel and Aviation Fuel Distributor Report is due on or before the 20th day of the month following the month of activity.

RT113 Motor Fuel and Petroleum Products Transporter Report

The Motor Fuel and Petroleum Products Transporter Report is due on or before the 20th day of the month following the month of activity.

RT-51 Oil Discharge & Pollution Control Report

The Oil Discharge & Pollution Control Report is due on or before the 20th day of the month following the month of activity.

If a report due date falls on a holiday or weekend, the tax report is due no later than the first business day after the holiday or weekend. The Department bases timely reports on the date of receipt of the electronic report.

EDI 813 Certification Procedures

- 1) Prior to submitting an EDI file for testing you must complete a Trading Partner Agreement and mail an original signed copy to the Department. A copy of the Trading Partner Agreement can be found in Appendix A.
- 2) Continue to file paper reports until you have successfully completed the certification phase and are approved for production.
- 3) Two successful transmissions of different filing period satisfy the certification phase. You must submit test files for each type of report you file. Please submit your two most current month's tax reports as your test reports.
- 4) The files are processed each business day, translated and reviewed by the Department.
- 5) After you upload a file to the Department, check the status on the Department's web site. An upload confirmation will be available shortly after the file is uploaded; additional information on the file status will be available within 24 hours of uploading the file.
- 6) After receiving each test, we will notify you of the results.
- 7) After successfully completing all phases, you will be notified that you may begin production EDI filing of your reports.
- 8) Whenever you make a significant change to your program, you should run another test with us to ensure accuracy and reliability.

EDI 813 Production Filing Procedures

- 1) Before filing a production report, your company must be certified by the Department's EDI Coordinator. See EDI Certification Procedures for further instruction on test filings.
- 2) After completing the certification phase, you will be notified when you are to begin production EDI filing.
- 3) Filers in production status should no longer send paper reports.
- 4) When filing a production report, remember to change your ISA15 (test/production flag) from 'T' to 'P'.
- 5) Follow the steps listed in Appendix B (Filing Procedures) to transmit your file.
- 6) After you upload a file to the Department, check the status on the Department's web site. An upload confirmation will be available shortly after the file is uploaded; additional information on the file status will be available within 24 hours of uploading the file

FTA Review

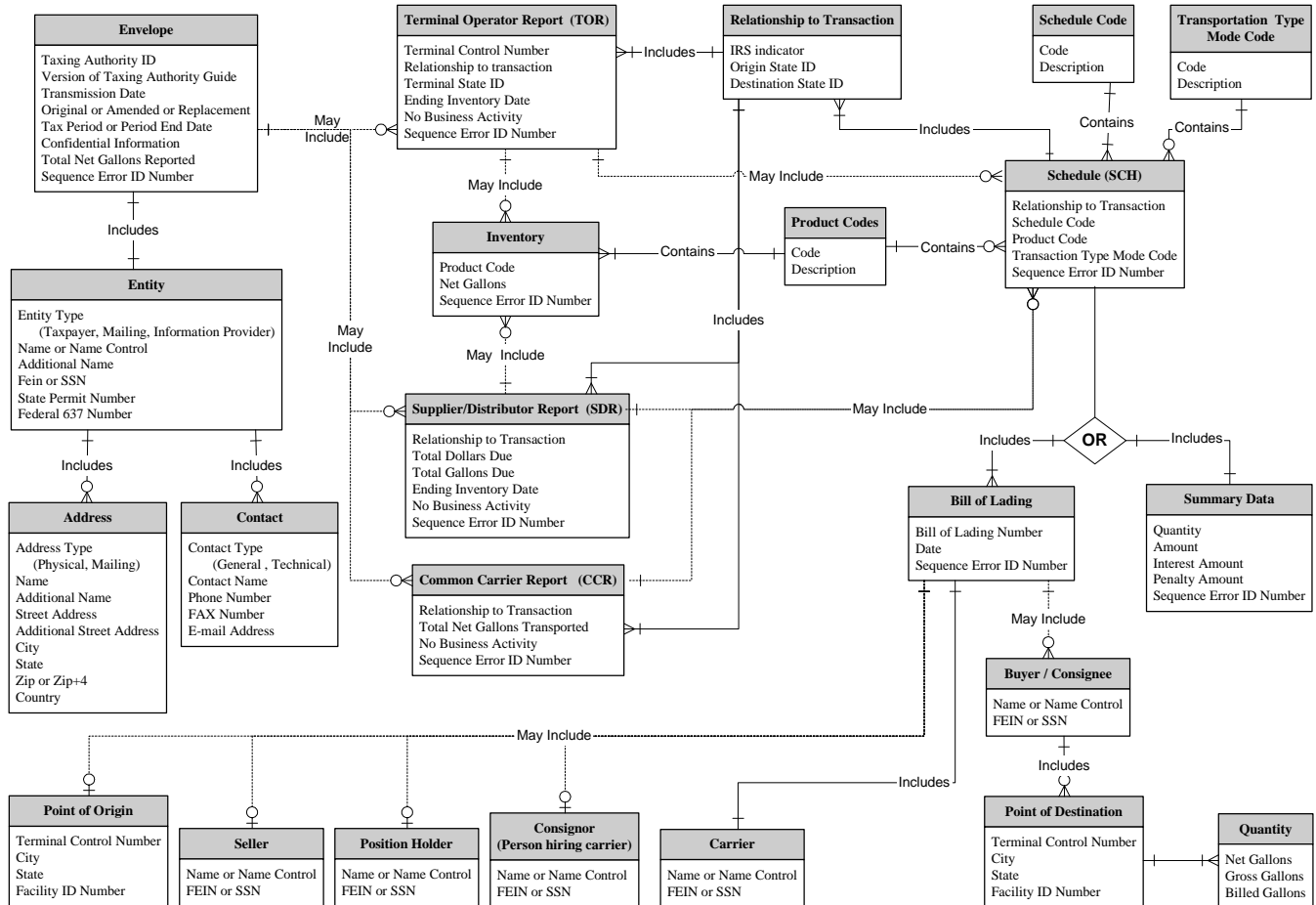
This guide is compliant with FTA Uniformity with a minor exception:

- Use of the TFS03 and TFS04 at the report level to distinguish the Motor Fuel and Aviation Fuel Distributor Report from the Oil Discharge & Pollution Control Report.

This guide was submitted to the FTA Uniformity Committee for review and was approved May 30, 2009.

Chapter 2 - Motor Fuels X12

Data Model



Chapter 3 – X12 Attribute and Separator Conventions

Attributes

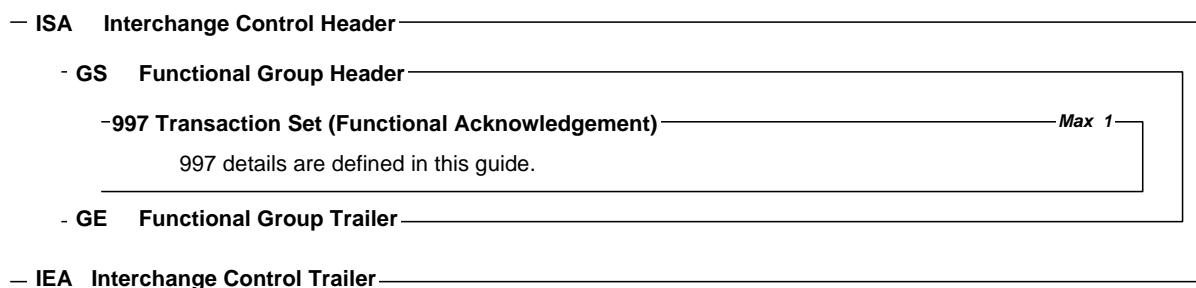
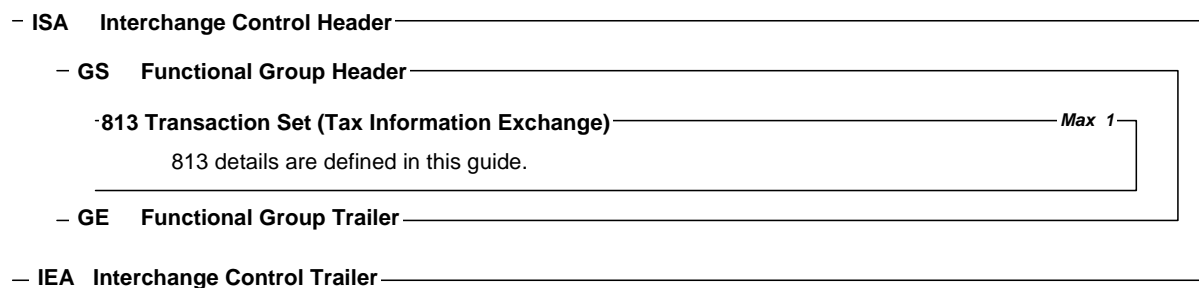
Attribute	Definition
Data Element Type	<p>Nn – Numeric Numeric type data element is symbolized by the two-position representation (Nn). N indicates a numeric, and n indicates the decimal places to the right of a fixed, implied decimal point. N0 (N Zero) is a numeric with no decimal places.</p> <p>R – Decimal (Real) The decimal point is optional for integer values, but is required for fractional values. For negative values, the leading minus (-) sign is used. Absence of this sign indicates a positive value. The plus (+) sign should not be transmitted.</p> <p>ID – Identifier An identifier data element must always contain a value from a predefined list of values that is maintained by ASC X12 or by other bodies that are recognized by ASC X12.</p> <p>AN – String A string (Alphanumeric) is a sequence of any characters from the basic or extended character sets. It must contain at least one non-space character. The significant characters must be left justified. Leading spaces, if any, are assumed to be significant. Trailing spaces should be suppressed.</p> <p>DT – Date Format for the date type is CCYYMMDD. CC is the century digits of the year (ex. 19, 20). YY is the last two digits of the year (00-99), MM is the numeric value of the month (01-12), and DD for the day (01-31).</p> <p>TM – Time Format for the time type is HHMMSS, expressed in 24-hour clock format. HH is the numeric value for hour (00-23), MM for minute (00-59), and SS for second (00-59).</p>
Requirement Designator	<p>Defines how the data element is used in a segment.</p> <p>M Mandatory data element - This element is required to appear in the segment.</p> <p>O Optional data element - The appearance of this data element is at the option of the sending party or is based on a mutual agreement of the interchange parties.</p> <p>X Relational data element - Relational conditions may exist between two or more data elements. If one is present the other/s is required. The relational condition is displayed under the Syntax Noted of the X12 Standards.</p>
Data Element Length	The number of character positions assigned to a data element. Example: Data element length of 2/10. You must have at least 2 characters but no more than 10 characters for this element (minimum of 2/ maximum of 10).
Semantic Note Designator	<p>Z – Designator A data element within a segment may have a designator (Z) that indicates the existence of a semantic note. Semantic notes are considered part of the standard. If a condition designator and a semantic note both affect a single data element, the condition will appear first, separated from the semantic note designator by a vertical bar (). The number 00 to the left of the comment identifies semantic notes that are general in nature.</p>

Separator Requirements

Type	ASCII Value	EBCDIC Value	Character	Character Name
Repetition Separator	7C	4F		Pipe
Segment Terminator	5C	E0	\	Back Slash
Element Separator	7E	A1	~	Tilde
Sub-element Separator	5E	5F	^	Caret
Padding Character	20	40	Space	Space

Chapter 4 – X12 EDI Envelope

Envelope Flows



Key:

Not Used	Not used: no data to transmit
Syntax Notes	Note: Notes defined by X12 Standards
FTA Notes	Note: Notes defined by FTA Uniformity
NH Notes	Note: Notes defined by the New Hampshire Department of Safety to further clarify the Department's requirements
Struck-out Text	Text, elements or entire segments that are struck out (example), are part of the Uniform map, but are not used by New Hampshire

Interchange Control Header Description

Interchange Segment								(Required)
Element ID	Elem Ref #	Sub-Ele Ref#	Field Status	Field Name	Field Type	Length		Field Description
						Min.	Max.	
ISA01	I01		M	Authorization Information Qualifier	ID	2	2	"00" = No Authorization Information Present (No Meaningful Information In Isa02)
ISA02	I02		M	Authorization Information	AN	10	10	Information used for additional identification or authorization of the interchange sender or the data in the interchange. Enter 10 Spaces
ISA03	I03		M	Security Information Qualifier	ID	2	2	"00" = No Security Information Present (No Meaningful Information In ISA 04)
ISA04	I04		M	Security Information	AN	10	10	This is used for identifying the security information about the interchange sender or the data in the interchange. Enter 10 spaces.
ISA05	I05		M	Interchange ID Qualifier	ID	2	2	"ZZ" = ID qualifier published by the sender used to designate the sender ID element being qualified.
ISA06	I06		M	Interchange Sender ID	AN	15	15	Filer FEIN followed by 6 spaces
ISA07	I05		M	Interchange ID Qualifier	ID	2	2	"ZZ" = ID qualifier published by the receiver used to designate the receiver ID element being qualified.
ISA08	I07		M	Interchange Receiver ID	AN	15	15	"NHROADTOLL" followed by 5 spaces
ISA09	I08		M	Interchange Date	DT	6	6	"YYMMDD" = Date Of The Interchange
ISA10	I09		M	Interchange Time	TM	4	4	"HHMM" = Time Of The Interchange
ISA11	I65		M	Repetition Separator		1	1	" " = EBCDIC - 4F HEX ASCII - 7C HEX
ISA12	I11		M	Interchange Control Version Number	ID	5	5	"00403"
ISA13	I12		M	Interchange Control Number	N0	9	9	The interchange control number uniquely identifies the interchange data to the sender. The sender assigns this number.
ISA14	I13		M	Acknowledgment Requested	ID	1	1	"0" = No Acknowledgment Required
ISA15	I14		M	Usage Indicator	ID	1	1	"P" = Production Data "T" = Test Data
ISA16	I15		M	Component Sub-Element Separator		1	1	"^" = EBCDIC - 5F HEX ASCII - 5E HEX
ISA~00~ ~00~ ~ZZ~123456789 ~ZZ~NHROADTOLL ~081022~0835~ ~00403~000000001~0~T~^\\								
Syntax Notes:		None						
FTA Note:		ISA09 does not include the century based on the ANSI ASC X12 Standard.						

Functional Group Header Description

Functional Group Segment (Required)								
Element ID	Elem. Ref #	Sub-Ele Ref#	Field Status	Field Name	Field Type	Length		Field Description
						Min.	Max.	
GS01	479		M	Functional Identifier Code	ID	2	2	"TF" for 813 Transaction Set "FA" for 997 Transaction Set
GS02	142		M	Application Sender's Code	AN	2	15	Code identifying party sending transmission. Code assigned by sender and agreed to by trading partner. Filer FEIN
GS03	124		M	Application Receiver's Code	AN	2	15	Code identifying party receiving transmission. Code assigned by receiving and agreed to by trading partner. "NHROADTOLL"
GS04	373		M/Z	Date	DT	8	8	"CCYYMMDD" = Date
GS05	337		M/Z	Time	TM	4	8	"HHMMSSDD" = Time
GS06	28		M/Z	Group Control Number	N0	1	9	Assigned number originated and maintained by the sender.
GS07	455		M	Responsible Agency Code	ID	1	2	"X" = ASC X12
GS08	480		M	Version/ Release / Industry Identifier Code	AN	1	12	"004030"
GS~TF~123456789~NHROADTOLL~20081022~0835~1101~X~004030\								
Syntax Notes: None								
FTA Note: None								

Functional Group Trailer Description

Functional Group Segment (Required)								
Element ID	Elem Ref #	Sub-Ele Ref#	Field Status	Field Name	Field Type	Length		Field Description
						Min.	Max.	
GE01	97		M	Number Of Transaction Sets Included	N0	1	6	Count of transaction sets within this GS/GE.
GE02	28		M/Z	Group Control Number	N0	1	9	The data interchange control number in the trailer must be identical to the same data element in the associated functional header (GS06).
GE~1~1101\								
Syntax Notes: None								
FTA Note: None								

Interchange Control Trailer Description

Interchange Segment (Required)								
Element ID	Elem Ref #	Sub-Ele Ref #	Field Status	Field Name	Field Type	Length		Field Description
						Min.	Max.	
IEA01	116		M	Number Of Included Functional Groups	N0	1	5	Count of Function Groups Within This ISA/IEA.
IEA02	112		M	Interchange Control Number	N0	9	9	The interchange number in the trailer must be identical to the same data element in the associated interchange header (ISA13).
IEA~1~000000001\								
Syntax Notes: None								
FTA Note: None								

Chapter 5 – 813 EDI Combined Reporting

ANSI ASC X12 – 813 EDI Standard

RELEASE • 004030

TRANSACTION SET TABLES • 813

813 Electronic Filing of Tax Return Data

FUNCTIONAL GROUP: **TF**

This Draft Standard for Trial Use contains the format and establishes the data contents of the Electronic Filing of Tax Return Data Transaction Set (813) for use within the context of an Electronic Data Interchange (EDI) environment. This transaction set can be used by tax filers to electronically file tax returns with a federal, state, or local taxing authority and which may initiate payments related to the tax return.

Table 1

NOTE	POS.NO.	SEG.ID	NAME	REQ.DES.	MAX USE	LOOP REPEAT
	0100	ST	Transaction Set Header	M	1	
	0200	BTI	Beginning Tax Information	M	1	
	0300	DTM	Date/Time Reference	M	10	
N	0400	TIA	Tax Information and Amount	O	1000	
	0430	REF	Reference Identification	O	10	
	0450	TRN	Trace	O	1000	
	0470	BPR	Beginning Segment for Payment Order/Remittance Advice	O	1000	
		LOOP ID - N1				>1
N	0500	N1	Name	O	1	
	0600	N2	Additional Name Information	O	2	
	0700	IN2	Individual Name Structure Components	O	10	
	0800	N3	Address Information	O	2	
	0900	N4	Geographic Location	O	1	
	1000	PER	Administrative Communications Contact	O	2	

Table 2

NOTE	POS.NO.	SEG.ID	NAME	REQ.DES.	MAX USE	LOOP REPEAT
		LOOP ID - TFS				100000
	0100	TFS	Tax Form	O	1	
	0200	REF	Reference Identification	O	10	
	0300	DTM	Date/Time Reference	O	10	
	0400	MSG	Message Text	O	1000	
		LOOP ID - N1				>1
N	0500	N1	Name	O	1	
	0600	N2	Additional Name Information	O	2	
	0700	IN2	Individual Name Structure Components	O	10	
	0800	N3	Address Information	O	2	
	0900	N4	Geographic Location	O	1	
		LOOP ID - TIA				10000
N	0920	TIA	Tax Information and Amount	O	1	
	0940	DTM	Date/Time Reference	O	10	
	0960	MSG	Message Text	O	1000	
		LOOP ID - FGS				100000
	1000	FGS	Form Group	O	1	
	1100	REF	Reference Identification	O	10	
	1200	DTM	Date/Time Reference	O	10	
		LOOP ID - N1				>1
N	1300	N1	Name	O	1	

DECEMBER 1999

1

¹ Data Interchange Standards Association, Inc. (DISA)

813 • TRANSACTION SET TABLES

RELEASE • 004030

1400	N2	Additional Name Information	O	2	
1500	IN2	Individual Name Structure Components	O	10	
1600	N3	Address Information	O	2	
1700	N4	Geographic Location	O	1	
LOOP ID - TIA					10000
N	1800	TIA Tax Information and Amount	O	1	
	1900	DTM Date/Time Reference	O	10	
	2000	MSG Message Text	O	1000	

Table 3

NOTE	POS.NO.	SEG.ID	NAME	REQ.DES.	MAX USE	LOOP REPEAT
	0100	SE	Transaction Set Trailer	M	1	
Changes loop repeat value in table/positions 1/0500, 2/0500 and 2/1300.						6 205299

NOTES

- 1/0400 The TIA segment allows for tax information and amounts associated with the entire filing. At least one occurrence of the TIA segment must be present in the transaction set, either in Table 1 or Table 2.
- 1/0500 This N1 loop reflects names and addresses associated with the entire filing.
- 2/0500 This N1 loop reflects names and addresses associated with a particular tax form (TFS).
- 2/0920 At least one occurrence of the TIA segment must be present in the transaction set, either in Table 1 or Table 2.
- 2/1300 This N1 loop reflects names and addresses associated with a particular subset of a tax form.
- 2/1800 At least one occurrence of the TIA segment must be present in the transaction set, either in Table 1 or Table 2.

² Data Interchange Standards Association, Inc. (DISA)

813 Structure

Struck-out Text

Text, elements or entire segments that are struck out (**example**), are part of the Uniform map, but are not used by New Hampshire

Table1

Pos No	Uniform 813 Map	Header
0100	ST	Transaction Set Header
0200	BTI	Identify Tax Agency Information
0300	DTM	Tax Filing Period
0400	TIA	Version of Taxing Authority's Implementation Guide
0400	TIA	Confidential Information
0400	TIA	Total Net Reported
0430	REF	Sequence Number
0500	N1	Taxpayer Name Detail
0600	N2	Additional Taxpayer Name Detail
0800	N3	Address Detail
0900	N4	City, State, Zip Code Detail
1000	PER	General Contact Person
1000	PER	EDI Contact Person
0500	N1	Mailing Name Detail
0600	N2	Additional Mailing Name Detail
0800	N3	Mailing Address Detail
0900	N4	Mailing City State Zip Code Detail

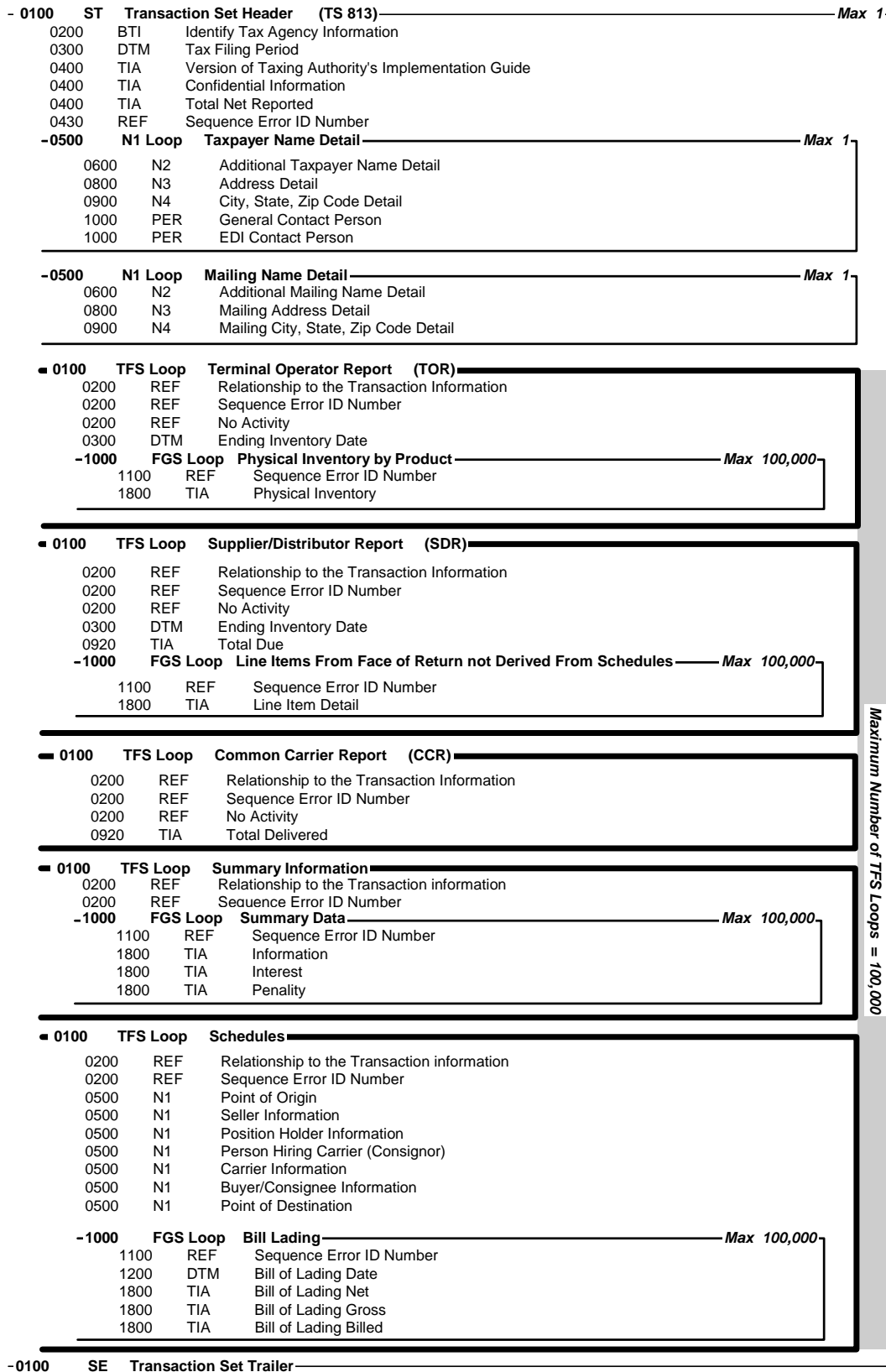
Table 2

Pos No	Uniform 813 Map	TOR	SDR	CCR	SUM	SCH
0100	TFS	Terminal Operator Report	Supplier/Distributor Report	Common Carrier Report	Summary Information	Schedules
0200	REF	Relationship to the Transaction	Relationship to the Transaction	Relationship to the Transaction	Relationship to the Transaction	Relationship to the Transaction
0200	REF	Sequence Number	Sequence Number	Sequence Number	Sequence Number	Sequence Number
0200	REF	No Activity	No Activity	No Activity		
0300	DTM	Sold/Purchase Date				
0300	DTM	Ending Inventory Date	Ending Inventory Date			
0500	N1					Point of Origin
0500	N1					Seller Information
0500	N1					Position Holder Information/Delivering Exchange Party
0500	N1					Receiving Exchange Partner Information
0500	N1					Person Hiring Carrier (Consignor)
0500	N1					Carrier Information
0500	N1					Buyer/Consignee Information
0500	N1					Point of Destination
0920	TIA	Total Due	Total Due	Total Delivered		
1000	FGS	Physical Inventory by Product	Physical Inventory by Product		Summary Data	Bill of Lading
1100	REF	Sequence Number	Sequence Number		Sequence Number	Sequence Number
1200	DTM					Bill of Lading Date
1800	TIA	Physical Inventory	Physical Inventory		Information	Bill of Lading Net
1800	TIA				Interest	Bill of Lading Gross
1800	TIA				Penalty	Bill of Lading Billed

Table 3

Pos No	Uniform 813 Map	Trailer
0100	SE	Transaction Set Trailer

813 Map Flow



813 Map/Envelope Structure

One or more 813 transaction sets can be included within an ISA/GS envelope. An ISA/GS envelope may contain 813 transactions for Distributor, Oil Discharge & Pollution Control, and Transporter, but they must all be for the same filing period.

Key:

Not Used	Not used: no data to transmit
Syntax Notes	Note: Notes defined by X12 Standards
FTA Notes	Note: Notes defined by FTA Uniformity
NH Notes	Note: Notes defined by the New Hampshire Department of Safety to further clarify the Department's requirements
Struck-out Text	Text, elements or entire segments that are struck out (example), are part of the Uniform map, but are not used by New Hampshire

Transaction Set Header Description

Beginning of Transaction Set Header Segment								(Required) Pos. No. 0100
Element ID	Elem Ref #	Sub-Ele Ref #	Field Status	Field Name	Field Type	Length Min Max		Field Description
ST01	143		M	Transaction Set Code	ID	3	3	Transaction Set Type "813"
ST02	329		M	Transaction Set Control Number	AN	4	9	Filer defined unique control number (same value as SE02)
ST03	1705		O/Z	Implementation Convention Reference	AN	1	5	Version of Taxing Authority's implementation Guide "1.0" = New Hampshire Version
ST~813~1001~1.0\								
Syntax Notes: None								
FTA Note: It is recommended that the ST03 be used to help identify which implementation guide the trading partner is using. This element will help the receiver of the data determine if the sender is using an old guide or the most current guide for the data transmission.								
NH Notes: New Hampshire requires use of ST03								

Identify Tax Agency Information Begin Tax Information Segment								(Required) Pos. No. 0200
Element ID	Elem Ref #	Sub-Ele Ref #	Field Status	Field Name	Field Type	Length Min Max		Field Description
BTI01	128		M	Reference Number Qualifier	ID	2	2	"T6" = Defines as Tax Filing
BTI02	127		M	Reference Number	AN	3	3	Determined by FTA "050" = All Fuels Tax Filings
BTI03	66		M	ID Code Qualifier	ID	2	2	"47" = Tax Authority
BTI04	67		M	ID Code	AN	2	20	Determined by Tax Authority "NHROADTOLL"
BTI05	373		O	Transaction Create Date	DT	8	8	"CCYYMMDD" = Transmission Date
BTI06	818		O	Name Control ID	AN	4	4	First 4 positions of Taxpayer's Legal Business Name. If business name is less than 4 characters, left justify name control and pad with "*".
BTI07	66		X	ID Code Qualifier	ID	2	2	"24" = FEIN Federal Employer Identification Number "34" = Social Security Number "50" = Canadian Business Number
BTI08	67		X	ID Code	AN	9	18	Taxpayer's FEIN or SSN or Canadian Business Number
BTI09	66		X	ID Code Qualifier	ID	2	2	"49" = State (assigned) Identification Number
BTI10	67		X	ID Code	AN	2	20	License or Permit Number
BTI11	66		X	ID Code Qualifier	ID	2	2	"SV" = Electronic Filer ID Number
BTI12	67		X	ID Code	AN	9	15	State assigned Software Identification
BTI13	353		O	Transaction Set Purpose Code	ID	2	2	Original Filing Options: "00" = Original

BTI14	640		O	Transaction Type Code	ID	2	2	Amended Filing Options: “6S” = Supplemental “CO” = Corrected
BTI~T6~050~47~NHROADTOLL~20081023~ABCD~24~111999988~49~1234~SV~XXXXXXXX~00\								
Syntax Notes: If either BTI07 or BTI08 is present, then the other is required. If either BTI09 or BTI10 is present, then the other is required. If either BTI11 or BTI12 is present, then the other is required.								
FTA Notes:								
BTI07 must be the FEIN if the taxpayer has one. Submit a SSN only for sole proprietorships that have not been issued a FEIN.								
The application of BTI13 and BTI14 are as follows: BTI13 should be used when the taxpayer transmits their initial return (BTI13 should be used without BTI14); BTI14 should be used when the taxpayer transmits modifications (BTI14 should be used without BTI13). This is a recommendation of the Motor Fuel Uniformity Committee, not a requirement of X12. Further clarification of these elements is located below.								
Element		Application						
BTI13 [Initial Return]								
“00” = Original		Use “Original” when first attempting to transmit your return to the department whether the return is received or not. Always use “00” until the original return is received.						
“05” = Replace		Use “Replace” when first attempt of transmitted return had corrupted data.						
“15” = Resubmission		Use “Resubmission” when the Department did not receive first attempt of your transmitted return.						
BTI14 [Amended Return]								
“CO” = Corrected		Use “Corrected” when adjusting or correcting original or amended return.						
“6R” = Resubmission		Use “Resubmission” when first attempt to transmit amended return was not received by the Department.						
“6S” = Supplemental		Use “Supplemental” when transmitting new or additional data not included in original or amended return.						
NH Notes: The software provider code (BTI12) will be assigned by the state. Software vendors should contact the Department’s EDI Coordinator (See the Contact Information Section) to request a software provider code. Filers who develop their own software may leave the BTI11 and BTI12 blank.								

Tax Filing Period							(Required)	
Date/Time Reference Segment							Pos. No. 0300	
Element ID	Elem Ref #	Sub-Ele Ref #	Field Status	Field Name	Field Type	Length Min Max		Field Description
DTM01	374		M	Date/Time Qualifier	ID	3	3	"194" = Tax Period End Date
DTM02	373		X	Date	DT	8	8	"CCYYMMDD" = Tax Filing Period End
DTM03 and DTM04 are not used.								
DTM05	1250		X	Date-Time Period Format Qualifier	ID	3	3	"RD8" = Range of Dates
DTM06	1251		X	Date-Time Period	AN	17	17	"CCYYMMDD-CCYYMMDD" = Tax Filing Period Beginning and Ending Dates.
DTM~194~20081031\								
Syntax Notes: At least one of DTM02 or DTM05 is required. If either DTM05 or DTM06 is present, then the other is required.								
FTA Notes: If qualifier "194" is used in DTM01, then DTM05 and DTM06 are not used. If qualifier "683" is used in DTM01, then DTM02 is not used.								
NH Notes: DTM02 Tax Period end date is required								

Confidential Data								
Tax Information and Amount Segment							Pos. No. 0400	
Element ID	Elem Ref #	Sub-Ele Ref #	Field Status	Field Name	Field Type	Length Min Max		Field Description
TIA01	817		M	Tax Information Code	AN	4	4	"5010" = Confidential Information
TIA02 is not used.								
TIA03	449		X	Fixed-Format Information	AN	1	5	User defined: Example: "6103" = IRS 6103B Tax data.
TIA~5010~6103\								
Syntax Notes: TIA03 is required.								
FTA Notes: This segment is used only between the states and the IRS								

Total Net Reported								
Tax Information and Amount Segment								Pos. No. 0400
Element ID	Elem Ref #	Sub-Ele Ref #	Field Status	Field Name	Field Type	Length		Field Description
						Min	Max	
TIA01	817		M	Tax Information Code	AN	4	4	“5001” = Total Net Reported
TIA02 and TIA03 are not used.								
TIA04	380		X	Quantity	R	1	15	Total Number of Net Gallons in Tax Filing
TIA05	355		M	Unit of Measurement Code	ID	2	2	“GA” = Gallons
TIA~5001~~~1000000~GA\								
Syntax Notes:		TIA04 is required. If TIA05 is present, then TIA04 is required.						
FTA Notes:		Even though this value can be calculated, it is included, as a control figure to verify that the amount calculated by the Tax Authority is the same as expected by the taxpayer.						
NH Notes:		This is the sum of gross gallons (+/-) across all schedules in the tax filing						

Sequence Number								Pos. No. 0200
Reference Number Segment								
Element ID	Elem Ref #	Sub-Ele Ref #	Field Status	Field Name	Field Type	Length		Field Description
						Min	Max	
REF01	428		M	Reference Identification Qualifier	ID	2	2	"FJ" = Sequence Number
REF02	427		X	Reference Identification	AN	1	9	Sequence Number
REF03	352		X	Description	AN	1	5	Error Response Code
REF~55~0001234\								
Syntax Notes: At least one of the REF02 or REF03 is required.								
FTA Note: This segment is used to identify information for error processing. This segment can be generated by the filer when first filling to assist in identifying information or when responding to an error reported.								
REF02 is always required.								

Payment Order Remittance Advice								(Required)
Beginning Segment								Pos. No. 0200
Element ID	Elem Ref #	Sub-Ele Ref #	Field Status	Field Name	Field Type	Length		Field Description
						Min	Max	
BPR01	305		M	Transaction Handling Code	ID	1	2	“S” = Single Debit Authorization “P” = Pre notification
BPR02	782		M	Monetary Amount	R	1	18	Amount of tax payment
BPR03	478		M	Credit/Debit Flag Code	ID	1	1	“D” = Debit
BPR04	591		M	Payment Method Code	ID	3	3	“ACH” = Automated Clearing House
BPR05	812		M	Payment Format Code	ID	3	3	“CCD” = Cash Contration/Disbursement “CCP” = Cash Concentration/Disbursement plus Addenda (CCD+)
BPR06 through BPR11 are not inserted by the taxpayer. They are on file with the party that creates the ACH Debit transaction. The taxpayer transmits empty fields for these elements.								
BPR06	506		X/Z	(ODFI) ID Number Qualifier	ID	2	2	“01” = ABA Transit Routing Number and Check Digits.
BPR07	507		X	(ODFI) Identification Number	AN	3	12	State’s Bank Routing and Transit Number
BPR08	569		O/Z	(ODFI) Account Number Qualifier	ID	1	3	“DA” = Demand Deposit “SG” = Savings
BPR09	508		X/Z	(ODFI) Account Number	AN	1	35	State’s Bank Account Number to be Credited
BPR10	509		O	Originating Company Identifier	AN	10	10	State ID Example: Taxing Authority’s DUNS Number
BPR11	510		O	Originating Company Supplemental Code	O	9	9	Code Identifying Fiscal Agent
BPR12	506		X/Z	(RDFI) ID Number Qualifier	ID	2	2	“01” = ABA Transit Routing Number and Check Digits
BPR13	507		X	(RDFI) Identification Number	AN	3	12	Taxpayer’s Bank Routing and Transit Number
BPR14	569		O/Z	(RDFI) Account Number Qualifier	ID	1	3	“DA” = Demand Deposit “SG” = Savings
BPR15	508		X/Z	(RDFI) Account Number	AN	1	35	Taxpayer’s Bank Accounted to be Debited
BPR16	373		O/Z	Date	DT	8	8	The intended payment effective date

								(CCYYMMDD)
BPR17	1048		O/Z	Business Function Code	ID	+	3	"TAX" = Tax Payment
BPR-S-500-D-ACH-CCD-01-123456789-DA-987654321-20010325-TAX\								
Syntax Notes: If either BPR06 or BPR07 is present, then the other is required. If BPR08 is present, then BPR09 is required. If either BPR12 or BPR13 is present, then the other is required. If BPR14 is present, then BPR15 is required.								
FTA Notes: This segment should not be mandated by a taxing authority ODFI (Originating Depository Financial Institution) is the bank that creates the ACH transaction. For debit transactions, this is the state's Bank. RDFI (Receiving Depository Financial Institution) is the bank that accepts the ACH transaction. For debit transactions, this is the Taxpayer's Bank.								

Name Detail								
Name Segment								Pos. No. 0500
Element ID	Elem Ref #	Sub-Ele Ref #	Field Status	Field Name	Field Type	Length		Field Description
						Min	Max	
N101	98		M	Entity Identification Code	ID	2	2	"TP" = Primary Taxpayer
N102	93		X	Name	AN	1	35	Taxpayer Name
N1~TP~Fuel Distributor\								
Syntax Notes: N102 is required.								
FTA Note: N101: Use "TP" for tax reporting, or "L9" for information reporting.								
NH Notes: This segment is required								

Additional Taxpayer Name Detail								
Additional Name Segment								Pos. No. 0600
Element ID	Elem Ref #	Sub-Ele Ref #	Field Status	Field Name	Field Type	Length		Field Description
						Min	Max	
N201	93		M	Name	AN	+	35	Taxpayer Name
N202	93		O	Name	AN	+	35	Taxpayer Name
N2~ABC Fuel Company~ABC Station\								
Syntax Notes: None								
FTA Note: None								

Address Detail								
Address Information Segment								Pos. No. 0800
Element ID	Elem Ref #	Sub-Ele Ref #	Field Status	Field Name	Field Type	Length		Field Description
						Min	Max	
N301	166		M	Address Information	AN	1	35	First Line Street Address
N302	166		O	Address Information	AN	1	35	Second Line Street Address
N3~123 Center Court~Suite B\								
Syntax Notes: None								
FTA Note: None								
NH Notes: This segment is required								

City, State, Zip Code Detail								
Location Geographic Segment								Pos. No. 0900
Element ID	Elem Ref #	Sub-Ele Ref #	Field Status	Field Name	Field Type	Length		Field Description
						Min	Max	
N401	19		M	City Name	AN	2	30	Name of City
N402	156		M	State code or Province	ID	2	2	State or Province Abbreviation
N403	116		O	Postal (Zip) Code	ID	3	11	ZIP Code, ZIP Plus 4 Code or Foreign Postal code
N404	26		O	Country	ID	2	3	Country Abbreviation (United States = USA)
N4~Manchester~NH~03100~44444~USA\								
Syntax Notes: None								
FTA Note: None								
NH Notes: This segment is required								

General Contact Person								
Administrative Communications Contact Segment								Pos. No. 1000
Element ID	Elem Ref #	Sub-Ele Ref #	Field Status	Field Name	Field Type	Length		Field Description
						Min	Max	
PER01	366		M	Contact Function Code	ID	2	2	Contact Type Code: "CN" = General Contact
PER02	93		M	Name	AN	1	35	Contact Name
PER03	365		X	Communications Number Qualifier	ID	2	2	"TE" = Telephone Number
PER04	364		X	Communications Number	AN	10	14	Voice Telephone Number
PER05	365		X	Communications Number Qualifier	ID	2	2	"FX" = FAX Number
PER06	364		X	Communications Number	AN	10	10	FAX Telephone Number
PER07	365		X	Communications Number Qualifier	ID	2	2	"EM" = Electronic Mail
PER08	364		X	Communications Number	AN	1	80	E-mail Address
PER~CN~Bee Scott~TE~6035551234~FX~6035551235~EM~BScott@OilCompany.com\								
Syntax Notes: If either PER03 or PER04 is present, then the other is required. If either PER05 or PER06 is present, then the other is required. If either PER07 or PER08 is present, then the other is required.								
FTA Note: None								
NH Notes: This segment is required.								

EDI Contact Person								
Administrative Communications Contact Segment								Pos. No. 1000
Element ID	Elem Ref #	Sub-Ele Ref #	Field Status	Field Name	Field Type	Length		Field Description
						Min	Max	
PER01	366		M	Contact Function Code	ID	2	2	Contact Type Code: "EA" = EDI Coordinator
PER02	93		M	Name	AN	1	35	Contact Name
PER03	365		X	Communications Number Qualifier	ID	2	2	"TE" = Telephone Number
PER04	364		X	Communications Number	AN	10	14	Voice Telephone Number
PER05	365		X	Communications Number Qualifier	ID	2	2	"FX" = FAX Number
PER06	364		X	Communications Number	AN	10	10	FAX Telephone Number
PER07	365		X	Communications Number Qualifier	ID	2	2	"EM" = Electronic Mail
PER08	364		X	Communications Number	AN	1	80	E-mail Address
PER~EA~Dee Scott~TE~6035552234~FX~6035552235~EM~DScott@OilCompany.com\								
Syntax Notes: If either PER03 or PER04 is present, then the other is required. If either PER05 or PER06 is present, then the other is required. If either PER07 or PER08 is present, then the other is required.								
FTA Note: None								
NH Notes: This segment is required.								

The following segments are required if the mailing address is different than the physical address.

Mailing Name Detail								
Name Segment								Pos. No. 0500
Element ID	Elem Ref #	Sub-Ele Ref #	Field Status	Field Name	Field Type	Length		Field Description
						Min	Max	
N101	98		M	Entity Identification Code	ID	2	2	"31" = Postal Mailing
N102	93		X	Name	AN	1	35	Mailing Name
N1~31~ABC Company\								
Syntax Notes: N102 is required.								
FTA Note: None								

Mailing Additional Name Detail								
Additional Name Segment								Pos. No. 0600
Element ID	Elem Ref #	Sub-Ele Ref #	Field Status	Field Name	Field Type	Length		Field Description
						Min	Max	
N201	93		M	Name	AN	1	35	Mailing Name
N202	93		Θ	Name	AN	1	35	Mailing Name
N2~ABC Fuel Company~ABC Subsidiary\								
Syntax Notes: None								
FTA Note: None								

Mailing Address Detail								
Address Information Segment								Pos. No. 0800
Element ID	Elem Ref #	Sub-Ele Ref #	Field Status	Field Name	Field Type	Length		Field Description
						Min	Max	
N301	166		M	Address Information	AN	1	35	First Line Street Address
N302	166		O	Address Information	AN	1	35	Second Line Street Address
N3~375 Pine Street~P.O Box 86\								
Syntax Notes: None								
FTA Note: None								

Mailing City, State, Zip Code Detail								
Location Geographic Segment								Pos. No. 0900
Element ID	Elem Ref #	Sub-Ele Ref #	Field Status	Field Name	Field Type	Length		Field Description
						Min	Max	
N401	19		M	City Name	AN	2	30	Name of City
N402	156		M	State code or Province	ID	2	2	State or Province Abbreviation
N403	116		O	Postal (Zip) Code	ID	3	11	ZIP Code, ZIP Plus 4 Code or Foreign Postal code
N404	26		O	Country	ID	2	3	Country Abbreviation (United States = USA)
N4~Manchester~NH~03103~USA\								
Syntax Notes: None								
FTA Note: None								

End of Transaction Set Header

Transaction Set - Supplier/Distributor Report (SDR)

This TFS loop reports information on the type of report. Transaction detail is reported using the Summary and Schedule section of this map.

The TFS loop is repeated when reporting information for each report. Repeat the FGS loop within the TFS loop for each product reported.

Note: use the SDR mapping for reporting the following reports:
 New Hampshire Motor Fuel and Aviation Fuel Distributor Report
 New Hampshire Oil Discharge and Pollution Control Report.

Beginning of Supplier/Distributor Report Detail								
Tax Form Segment								Pos. No. 0100
Element ID	Elem Ref. #	Sub-Ele Ref. #	Field Status	Field Name	Field Type	Length		Field Description
						Min	Max	
TFS01	128		M	Reference Identification Qualifier	ID	2	2	"T2" = Tax Form Code
TFS02	127		M	Reference Identification	AN	1	6	"SDR" = Supplier/Distributor Report
TFS03	128		M	Reference Identification Qualifier	ID	2	2	"FW" = State License Type
TFS04	127		M	Reference Identification	AN	2	25	State Tax Type "MFD" = Motor Fuel & Aviation Fuel Distributor "ODPC" = Oil Discharge and Pollution Control
TFS05	66		X	ID Code Qualifier	ID	2	2	"TC" = IRS Terminal Code
TFS06	67		X	ID Code	AN	9	9	IRS Terminal Control Number (TCN)
TFS~T2~SDR~FW~MFD\								
Syntax Notes: If either TFS05 or TFS06 is present, then the other is required.								
FTA Note: TFS05 and TFS06 are only used on a terminal report.								

Relationship to the Transaction Information								
Reference Segment								Pos. No. 0200
Element ID	Elem Ref. #	Sub-Ele Ref. #	Field Status	Field Name	Field Type	Length		Field Description
						Min	Max	
REF01	128		M	Reference Identification Qualifier	ID	2	2	"SU" = Special Processing
REF02	127		X	Reference Identification	AN	3	3	IRS = IRS Data N/A = If not applicable to the IRS
REF03 Not used								
REF04	C040	128	M	Reference Identification Qualifier	ID	2	2	"S0" = Special Approval (S Zero)
REF05	C040	127	M	Reference Identification	AN	2	2	State Abbreviation for state which data belongs to.
REF06	C040	128	X	Reference Identification Qualifier	ID	2	2	"S0" = Special Approval (S Zero)
REF07	C040	127	X	Reference Identification	AN	2	2	State abbreviation for state which data belongs to.
REF~SU~N/A~S0^NH\								
Syntax Notes: At least one of REF02 or REF03 is required.								
FTA Note: REF02, REF05 and REF07 represent the taxing authorities and their relationship to the information in this TFS loop. REF05 – REF07 use the sub-element separator.								

Sequence Number								
Reference Number Segment								Pos. No. 0200
Element ID	Elem Ref. #	Sub-Ele Ref. #	Field Status	Field Name	Field Type	Length		Field Description
						Min	Max	
REF01	128		M	Reference Identification Qualifier	ID	2	2	"55" = Sequence Number
REF02	127		X	Reference Identification	AN	1	9	Sequence Number
REF03	352		X	Description	AN	1	5	Error Response Code
REF~55~0001234\								
Syntax Notes: At least one of REF02 or REF03 is required.								
FTA Note: This segment is used to identify information for error processing. This segment can be generated by the filer when first filling to assist in identifying information or when responding to an error reported. REF02 is always required. REF03 is used for responding to an error.								

Condition 1 - If an account has no activity this segment is required. The Condition 2 DTM, TIA and FGS Loop are not used.

No Activity Reference Number Segment								(Conditional) Pos. No. 0200
Element ID	Elem Ref #	Sub-Ele Ref #	Field Status	Field Name	Field Type	Length Min Max		Field Description
REF01	128		M	Entity Identification Code	ID	2	2	"BE" = Business Activity
REF02	127		X	Name	AN	1	1	"1" = No Activity
REF~BE~1\								
Syntax Notes: REF02 is required.								
FTA Notes: None								
NH Notes: 'No activity' is valid only for an original filing								

Condition 2 – If an account has activity; at least the TIA (Total Due) segment is required. The Condition 1 REF is not used. The FGS loop contains inventory information by product. The FGS loop repeats when the product code value changes.

Sold/Acquired Date Date/Time Reference Segment								(Conditional) Pos. No. 0300
Element ID	Elem Ref #	Sub-Ele Ref #	Field Status	Field Name	Field Type	Length Min Max		Field Description
DTM01	374		M	Date/Time Qualifier	ID	3	3	"572" = Date Property Sold "631" = Date Property Acquired
DTM02	373		X	Date	DT	8	8	"CCYYMMDD"
DTM~572~20010520\								
Syntax Notes: DTM02 is required.								
FTA Note: This segment is used once when you purchase or sell a terminal.								

Condition 2 – If an account has activity, at least the TIA (Total Due/Delivered) is required. The Condition 1 REF is not used. The FGS loop contains inventory information. The FGS loop is repeated when the product code value changes.

Ending Inventory Date Date/Time Reference Segment								(Conditional) Pos. No. 0300
Element ID	Elem Ref #	Sub-Ele Ref #	Field Status	Field Name	Field Type	Length Min Max		Field Description
DTM01	374		M	Date/Time Qualifier	ID	3	3	"184" = Inventory Date
DTM02	373		X	Date	DT	8	8	"CCYYMMDD"
DTM~184~20081031\								
Syntax Notes: DTM02 is required.								
FTA Notes: Use this segment when reporting ending inventory in the FGS Loop for the supplier/distributor.								

Total Due Tax Information and amount Segment								(Conditional) Pos. No. 0920
Element ID	Elem Ref #	Sub-Ele Ref #	Field Status	Field Name	Field Type	Length Min Max		Field Description
TIA01	817		M	Tax Information ID Number	AN	4	4	"5003" = Total Due
TIA02	782		X	Monetary Amount	R	1	15	Dollar Amount
TIA03 is not used.								
TIA04	380		X	Quantity	R	1	15	Quantity
TIA05	355		M	Unit of Measurement Code	ID	2	2	"GA" = Gallons
TIA~5003~167953.75~245000~GA\								
Syntax Notes: At least one of TIA02 or TIA04 is required. If TIA05 is present, then TIA04 is required.								
FTA Notes: Total Due is passed as a check value and represents dollars and/or quantity.								
NH Notes: Motor Fuel and Aviation Fuel Distributor Report TIA02 is the Total Amount Due – Page 1, Line 16 of the report TIA04 is the sum of gross gallons on all schedules for the report Oil Discharge and Pollution Control Report TIA02 is the Total Amount Due – Line 28 of the report TIA04 is the sum of gross gallons on all schedules for the report								

Physical Inventory by Product Form Group Segment								(Conditional) Pos. No. 1000
Element ID	Elem Ref. #	Sub-Ele Ref. #	Field Status	Field Name	Field Type	Length		Field Description
						Min	Max	
FGS01	350		M	Assigned Identification	AN	2	2	"BI" = Beginning Inventory "EI" = Ending Inventory "GL" = Gains and Losses
FGS02	128		X	Reference Identification Qualifier	ID	2	2	"PG" = Product Group
FGS03	127		X	Reference Identification	AN	3	3	Product Code
FGS~EI~PG~065\								
Syntax Notes: If either FGS02 or FGS03 is present, then the other is required.								
FTA Note: FGS01 – Recommend BI only be used for first filing. Beginning inventory is the previous period's ending inventory. FGS01 – GL - TIA04 is Positive for a gain and negative for a loss.								
NH Notes: Motor Fuel and Aviation Fuel Distributor Report Ending Inventory is required Beginning Inventory need only be sent with the first certification test and the first production filing								

Sequence Number Reference Number Segment								Pos. No. 0200
Element ID	Elem Ref. #	Sub-Ele Ref. #	Field Status	Field Name	Field Type	Length		Field Description
						Min	Max	
REF01	428		M	Reference Identification Qualifier	ID	2	2	"55" = Sequence Number
REF02	427		X	Reference Identification	AN	1	9	Sequence Number
REF03	352		X	Description	AN	1	5	Error Response Code
REF~55~0001234\								
Syntax Notes: At least one of REF02 or REF03 is required.								
FTA Note: This segment is used to identify information for error processing. This segment can be generated by the filer when first filing to assist in identifying information or when responding to an error reported. REF02 is always required. REF03 is used for responding to an error.								

Inventory Tax Information and Amount Segment								(Required if FGS is Used) Pos. No. 1800
Element ID	Elem Ref. #	Sub-Ele Ref. #	Field Status	Field Name	Field Type	Length		Field Description
						Min	Max	
TIA01	817		M	Tax Information ID Number	AN	4	4	"5002" = Net Physical Inventory
TIA02 - TIA03 are not used.								
TIA04	380		X	Quantity	R	1	15	Quantity
TIA05	355		M	Unit of Measurement Code	ID	2	2	"GA" = Gallons
TIA~5002~~~58000~GA\								
Syntax Notes: TIA04 is required. If TIA05 is present, then TIA04 is required.								
FTA Notes: Physical Inventory is the only value passed in this loop. All other information is derivable from schedules.								

End of FGS loop (Line item detail)

End of TFS loop (SDR detail)

Transaction Set – Transporter Report (CCR)

This TFS loop reports information on the CCR. Transaction detail is reported using the Summary and Schedule section of this map.

Beginning of Report Tax Form Segment								Pos. No. 0100
Element ID	Elem Ref. #	Sub-Ele Ref. #	Field Status	Field Name	Field Type	Length		Field Description
						Min	Max	
TFS01	128		M	Reference Identification Qualifier	ID	2	2	"T2" = Tax Form Code
TFS02	127		M	Reference Identification	AN	1	6	CCR – Transporter Report
TFS03 and TFS04 Are not used								
TFS05	66		X	ID Code Qualifier	ID	2	2	"TC" = IRS Terminal Code
TFS06	67		X	ID Code	AN	9	9	IRS Terminal Control Number (TCN)
TFS~T2~CCR \								
Syntax Notes: None								

Relationship to the Transaction Information Reference Segment								Pos. No. 0200
Element ID	Elem Ref. #	Sub-Ele Ref. #	Field Status	Field Name	Field Type	Length		Field Description
						Min	Max	
REF01	128		M	Reference Identification Qualifier	ID	2	2	"SU" = Special Processing
REF02	127		X	Reference Identification	AN	3	3	IRS = IRS Data N/A = If not applicable to the IRS
REF03 Not used								
REF04 01	C040	128	M	Reference Identification Qualifier	ID	2	2	"S0" = Special Approval (S Zero)
REF04 02	C040	127	M	Reference Identification	AN	2	2	State Abbreviation for state which data belongs to.
REF04 03	C040	128	X	Reference Identification Qualifier	ID	2	2	"S0" = Special Approval (S Zero)
REF04 04	C040	127	X	Reference Identification	AN	2	2	State abbreviation for state which data belongs to.
REF~SU~IRS~S0~MT\								
Syntax Notes: REF02 is required.								
FTA Note: REF02, REF04 02 and REF04 04 represent the taxing authorities and their relationship to the information in this TFS loop.								
REF05 – REF07 use the sub-element separator.								

Sequence Number Reference Number Segment								Pos. No. 0200
Element ID	Elem Ref. #	Sub-Ele Ref. #	Field Status	Field Name	Field Type	Length		Field Description
						Min	Max	
REF01	128		M	Reference Identification Qualifier	ID	2	2	"S5" = Sequence Number
REF02	127		X	Reference Identification	AN	1	9	Sequence Number
REF03	352		X	Description	AN	1	5	Error Response Code
REF~55~0001234\								
Syntax Notes: At least one of REF02 or REF03 is required.								
FTA Note: This segment is used to identify information for error processing. This segment can be generated by the filer when first filling to assist in identifying information or when responding to an error reported.								
REF02 is always required. REF03 is used for responding to an error.								

Condition 1 – If an account has no activity this segment is required. The Condition 2 DTM and FGS are not used.

No Activity Reference Number Segment								(Conditional) Pos. No. 0200
Element ID	Elem Ref #	Sub-Ele Ref #	Field Status	Field Name	Field Type	Length		Field Description
						Min	Max	
REF01	128		M	Entity Identification Code	ID	2	2	“BE” = Business Activity
REF02	127		X	Name	AN	1	1	“1” = No Activity
REF~BE~1\								
Syntax Notes: REF02 is required.								
FTA Note: If an account has no activity, this segment is required.								
NH Notes: ‘No activity’ is valid only for an original filing								

Condition 2 – If an account has activity; at least the TIA (Total Delivered) is required. The Condition 1 REF is not used.

Total Due/Transported Tax Information and amount Segment								(Conditional) Pos. No. 0920
Element ID	Elem Ref. #	Sub-Ele Ref. #	Field Status	Field Name	Field Type	Length		Field Description
						Min	Max	
TIA01	C037	817	M	Tax Information ID Number	AN	4	4	“5004” = Total Net Transported
TIA02	782		X	Monetary Amount	R	1	15	Dollar Amount
TIA03 is not used.								
TIA04	380		X	Quantity	R	1	15	Quantity
TIA05	C001	355	M	Unit of Measurement Code	ID	2	2	“GA” = Gallons
TIA~5004~~~100000~GA\								
Syntax Notes: At least one of TIA02 or TIA04 is required. If TIA05 is present, then TIA04 is required.								
FTA Notes: Total Transported is passed as a check value and represents quantity.								
NH Notes: TIA04 Gallons is the sum of gross gallons on all schedules for the report TIA02 Dollar Amount is the Total Amount Due – Line 7 of the Report								

End of FGS loop (Line item detail)

End of TFS loop (detail)

Summary Information

This TFS loop reports summary information. This TFS loop is used in combination with the SDR report.

Summary information is used when the information cannot be derived from the schedule details. This TFS loop repeats when one of the following values changes: TFS02 Summary Code, TFS04 Product Code.

If there are no transactions to report in this filing, it is not necessary to transmit a Summary Information TFS loop.

Beginning of Summary Information								Pos. No. 0100	
Tax Form Segment									
Element ID	Elem Ref. #	Sub-Ele Ref. #	Field Status	Field Name	Field Type	Length		Field Description	
						Min	Max		
TFS01	128		M	Reference Identification Qualifier	ID	2	2	“T3” = Tax Schedule Code	
TFS02	127		M	Reference Identification	AN	1	6	TFS02 Summary Code “S02” Total Amount Due “S02D” Other Environmental Fees “S05A” Gallons produced “S01C” Product Transfer – Disbursement “S01D” Product Transfer – Receipt	
TFS03	128		X	Reference Identification Qualifier	ID	2	2	“PG” = Product Group	
TFS04	127		X	Reference Identification	AN	3	3	Product Code See Product Codes in Appendix on page D-56	
TFS05	66		X	Identification Code Qualifier	ID	2	2	“T2” = Tax Form Code “94” = Mode	
TFS06	67		X	Identification Code	AN	2	2	“CE” = Transaction Type Mode Code	
TFS~T3~S01C~PG~065~94~CE\									
Syntax Notes:		If either TFS03 or TFS04 is present, then the other is required. If either TFS05 or TFS06 is present, then the other is required.							
FTA Notes:		TFS02 references the report the summary is associated with. If TFS05 = “94” then TFS06 = “CE”. If TFS05 = “T2” then TFS06 = Report Code							
NH Notes:		Refer to New Hampshire Summary Mapping Section for additional information							

Relationship to the Transaction Information								Pos. No. 0200	
Reference Segment									
Element ID	Elem Ref. #	Sub-Ele Ref. #	Field Status	Field Name	Field Type	Length		Field Description	
						Min	Max		
REF01	128		M	Reference Identification Qualifier	ID	2	2	“SU” = Special Processing	
REF02	127		X	Reference Identification	AN	3	3	IRS = IRS Data N/A = If not applicable to the IRS	
REF03 Not used									
REF04	C040	128	M	Reference Identification Qualifier	ID	2	2	“S0” = Special Approval (S Zero)	
REF05	C040	127	M	Reference Identification	AN	2	2	State Abbreviation for state which data belongs to.	
REF06	C040	128	X	Reference Identification Qualifier	ID	2	2	“S0” = Special Approval (S Zero)	
REF07	C040	127	X	Reference Identification	AN	2	2	State abbreviation for state which data belongs to.	
REF~SU~N/A~~S0~NH\									
Syntax Notes: At least one of REF02 or REF03 is required.									
FTA Notes: REF02, REF05 and REF07 represent the taxing authorities and their relationship to the information in this TFS loop. REF05 – REF07 use the sub-element separator.									

Sequence Number Reference Number Segment								
								Pos. No. 0200
Element ID	Elem Ref #	Sub-Ele Ref #	Field Status	Field Name	Field Type	Length		Field Description
						Min	Max	
REF01	428		M	Reference Identification Qualifier	ID	2	2	"55" = Sequence Number
REF02	427		X	Reference Identification	AN	4	9	Sequence Number
REF03	352		X	Description	AN	4	5	Error Response Code
REF~55~0001234\								
Syntax Notes: At least one of REF02 or REF03 is required.								
FTA Note: This segment is used to identify information for error processing. This segment can be generated by the filer when first filling to assist in identifying information or when responding to an error reported.								
REF02 is always required. REF03 is used for responding to an error.								

Summary Data Forms Group Segment								
								Pos. No. 1000
Element ID	Elem Ref. #	Sub-Ele Ref. #	Field Status	Field Name	Field Type	Length		Field Description
						Min	Max	
FGS01	350		M	Assigned Identification	AN	1	1	"S" = Schedule Summary
FGS~S\								
Syntax Notes: None								
FTA Notes: None								

Sequence Number Reference Number Segment								
								Pos. No. 0200
Element ID	Elem Ref #	Sub-Ele Ref #	Field Status	Field Name	Field Type	Length		Field Description
						Min	Max	
REF01	428		M	Reference Identification Qualifier	ID	2	2	"55" = Sequence Number
REF02	427		X	Reference Identification	AN	4	9	Sequence Number
REF03	352		X	Description	AN	4	5	Error Response Code
REF~55~0001234\								
Syntax Notes: At least one of REF02 or REF03 is required.								
FTA Note: This segment is used to identify information for error processing. This segment can be generated by the filer when first filling to assist in identifying information or when responding to an error reported.								
REF02 is always required. REF03 is used for responding to an error.								

Information Tax Information and Amount Segment								
								Pos. No. 1800
Element ID	Elem Ref. #	Sub-Ele Ref. #	Field Status	Field Name	Field Type	Length		Field Description
						Min	Max	
TIA01	817		M	Tax Information ID Number	AN	4	4	TIA Code "5006" = Gross
TIA02	782		X	Monetary Amount	R	1	15	Dollar Amount
TIA03 are not used.								
TIA04	380		X	Quantity	R	1	15	Quantity
TIA05	355		M	Unit of Measurement Code	ID	2	2	"GA" = Gallons
TIA~5006~~~25000~GA\ or TIA~5006~1475.63\								
Syntax Notes: At least one of TIA02 or TIA04 is required. If TIA05 is present, then TIA04 is required.								
FTA Notes: None								

Interest								
Tax Information and Amount Segment								Pos. No. 1800
Element ID	Elem Ref. #	Sub-Ele Ref. #	Field Status	Field Name	Field Type	Length		Field Description
						Min	Max	
TIA01	C037	817	M	Tax Information ID Number	AN	4	4	“5008” = Interest
TIA02	782		X	Monetary Amount	R	1	15	Dollar Amount
TIA~5008~500\								
Syntax Notes: TIA02 is required.								
FTA Notes: None								

Penalty								
Tax Information and Amount Segment								Pos. No. 1800
Element ID	Elem Ref. #	Sub-Ele Ref. #	Field Status	Field Name	Field Type	Length		Field Description
						Min	Max	
TIA01	C037	817	M	Tax Information ID Number	AN	4	4	“5009” = Penalty
TIA02	782		X	Monetary Amount	R	1	15	Dollar Amount
TIA~5009~200\								
Syntax Notes: TIA02 is required.								
FTA Notes: None								

End of FGS loop (Summary Data)

End of TFS loop (Summary Information)

New Hampshire Summary Mapping

Summary segments are required as indicated. However, summary segments are not required with a “No Activity” filing.

MFD 1-S/AF Motor Fuel and Aviation Fuel Distributor Report

Description	MFD 1-S/AF Report Reference	TFS02 Summary Code	TIA Code	Required?	Gallons or Dollars
Gallons Produced	Page 1, Line 3	S05A	5006	Required if biodiesel was refined, distilled, prepared, blended or manufactured	Gallons
Product Transfer – Disbursement	Page 1, Line 5	S01C	5006	Required if product was transferred during the filing period	Gallons
Product Transfer – Receipt	Page 1, Line 5	S01D	5006	Required if product was transferred during the filing period	Gallons
Total Tax Due	Page 1, Line 13	S02	5006	Yes	Dollars
Penalty	Page 1, Line 14	S02	5009	Yes	Dollars
Interest	Page 1, Line 15	S02	5008	Yes	Dollars

RT51 Oil Discharge and Pollution Control Report

Description	RT51 Report Reference	TFS02 Summary Code	TIA Code	Required?	Gallons or Dollars
Product Transfer – Disbursement	Line 8	S01C	5006	Required if product was transferred or adjustment was made during the filing period	Gallons
Product Transfer – Receipt	Line 8	S01D	5006	Required if product was transferred or adjustment was made during the filing period	Gallons
Other Environmental Fees	Line 12	S02D	5006	Provide if adjustments apply for the filing period	Gallons
Other Environmental Fees	Line 16	S02D	5006	Provide if adjustments apply for the filing period	Gallons
Other Environmental Fees	Line 20	S02D	5006	Provide if adjustments apply for the filing period	Gallons
Total Fee Due	Line 25	S02	5006	Yes	Dollars
Penalty	Line 26	S02	5009	Yes	Dollars
Interest	Line 27	S02	5008	Yes	Dollars

RT113 Motor Fuel and Petroleum Products Transporter’s Report

Description	RT113 Report Reference	TFS02 Summary Code	TIA Code	Required?	Gallons or Dollars
Penalty	Line 5	S02	5009	Yes	Dollars
Interest	Line 6	S02	5008	Yes	Dollars

Schedules

This TFS loop begins the schedule detail. It repeats when one of the following values change:

Tax Form Code, Schedule Code, Mode Code, Product Code, Origin, Position Holder, Seller, Consignor, Carrier, Buyer, or Destination.

If there are no transactions to report in this filing, it is not necessary to transmit a Schedules TFS loop. You must indicate no activity in the SDR and/or CCR sections of this map.

Beginning of Schedules								
Tax Form Segment								Pos. No. 0100
Element ID	Elem Ref. #	Sub-Ele Ref. #	Field Status	Field Name	Field Type	Length		Field Description
						Min	Max	
TFS01	128		M	Reference Identification Qualifier	ID	2	2	"T3" = Tax Schedule Code
TFS02	127		M	Reference Identification	AN	1	6	Schedule Type Code See schedule code list in Appendix on page C-55
TFS03	128		X	Reference Identification Qualifier	ID	2	2	"PG" = Product Group
TFS04	127		X	Reference Identification	AN	3	3	Product Code See Product Codes in Appendix on page D-56
TFS05	66		X	Identification Code Qualifier	ID	2	2	"94" = Mode
TFS06	67		X	Identification Code	AN	2	2	Transaction Type Mode Code See Code List in Appendix on page F-60
TFS~T3~1~PG~065~94~J \								
Syntax Notes: If either TFS03 or TFS04 is present, then the other is required. If either TFS05 or TFS06 is present, then the other is required.								
FTA Notes: None								

Relationship to the Transaction Information								
Reference Segment								Pos. No. 0200
Element ID	Elem Ref. #	Sub-Ele Ref. #	Field Status	Field Name	Field Type	Length		Field Description
						Min	Max	
REF01	128		M	Reference Identification Qualifier	ID	2	2	"SU" = Special Processing
REF02	127		X	Reference Identification	AN	3	3	IRS = IRS Data N/A = If not applicable to the IRS
REF03 Not used								
REF04	C040	128	M	Reference Identification Qualifier	ID	2	2	"S0" = Special Approval (S Zero)
REF05	C040	127	M	Reference Identification	AN	2	2	State Abbreviation for state which data belongs to.
REF06	C040	128	X	Reference Identification Qualifier	ID	2	2	"S0" = Special Approval (S Zero)
REF07	C040	127	X	Reference Identification	AN	2	2	State abbreviation for state which data belongs to.
REF~SU~N/A~~S0^NH\								
Syntax Notes: REF02 is required.								
FTA Notes: REF02, REF05 and REF07 represent the taxing authorities and their relationship to the information in this TFS loop. REF05 – REF07 use the sub-element separator.								

Sequence Number								
Reference Number Segment								Pos. No. 0200
Element ID	Elem Ref. #	Sub-Ele Ref. #	Field Status	Field Name	Field Type	Length		Field Description
						Min	Max	
REF01	128		M	Reference Identification Qualifier	ID	2	2	"55" = Sequence Number
REF02	127		X	Reference Identification	AN	4	9	Sequence Number
REF03	352		X	Description	AN	4	5	Error Response Code
REF~55~0001234\								
Syntax Notes: At least one of REF02 or REF03 is required.								
FTA Note: This segment is used to identify information for error processing. This segment can be generated by the filer when first filling to assist in identifying information or when responding to an error reported. REF02 is always required. REF03 is used for responding to an error.								

For Point of Origin/Terminal: (One of the following Options is Required)

Use Option 1 when the origin has an IRS TCN.

Use Option 2 when the origin does not have an IRS TCN.

~~Use Option 3 when the state requires an origin facility ID (currently used by the state of Florida).~~**Option 1**

Point of Origin Name Segment 1						(One of the two options is used) Pos. No. 0500		
Element ID	Elem Ref. #	Sub-Ele Ref. #	Field Status	Field Name	Field Type	Length Min Max		Field Description
N101	98		M	Entity Identification Code	ID	2	2	"OT" = Origin Terminal
N102 is not used.								
N103	66		X	Identification Code Qualifier	ID	2	2	"TC" = IRS Terminal Code
N104	67		X	Identification Code	AN	9	9	IRS Terminal Code (Code list is located at www.irs.gov/bus_info/excise/index.html)
N1~OT~~TC~T02NH1056\								
Syntax Notes: N103 is required. If either N103 or N104 is present, then the other is required.								
FTA Notes: None								
NH Notes: Origin Terminal (Option 1) is required when the origin has an IRS TCN Either origin option 1 or origin option 2 is required for all schedules								

Option 2

Point of Origin Name Segment 1						(One of the two options is used) Pos. No. 0500		
Element ID	Elem Ref. #	Sub-Ele Ref. #	Field Status	Field Name	Field Type	Length Min Max		Field Description
N101	98		M	Entity Identification Code	ID	2	2	"SF" = Ship From
N102	93		X	Name	AN	2	2	Origin State Abbreviation
N1~SF~NH\								
Syntax Notes: N102 is required.								
FTA Notes: None								
NH Notes: Either origin option 1 or origin option 2 is required for all schedules For credit schedules 13C, 13H, 13K, point of origin must match point of destination								

Point of Origin Name Segment 1						Pos. No. 0500		
Element ID	Elem Ref. #	Sub-Ele Ref. #	Field Status	Field Name	Field Type	Length Min Max		Field Description
N401	19		M	City Name	AN	2	30	Name of City
N402	156		O	State or Province Code	ID	2	2	State or Providence Abbreviation
N403	116		O	Postal Code	ID	3	11	ZIP or ZIP plus 4 Code
N404	26		X	Country Code	ID	2	3	Country (USA, CAN, MEX)
N405	309		X	Location Qualifier	ID	4	2	"CY" = County
N406	310		O	Location Identifier	AN	4	5	County
N4~Concord~NH~~USA\								
Syntax Notes: None								
FTA Notes: N404 through N406 are optional. N406 is based on the federal county codes (see: http://www.itl.nist.gov/fipspubs/co-codes/states.htm) N405 and N406 are not in the IRS 4030 map.								
NH Notes: Include this segment when using origin option 2. Include N404 Country Code if not USA. If not provided, Country Code will default to USA.								

Option 3

Point of Origin Name Segment 1								(One of the three options is used) Pos. No. 0500
Element ID	Elem Ref. #	Sub-Ele Ref. #	Field Status	Field Name	Field Type	Length Min Max		Field Description
N101	98		M	Entity Identification Code	ID	2	2	"WO" = Storage Facility at Origin
N102 is not used.								
N103	66		X	Identification Code Qualifier	ID	2	2	"FA" = Facility Identification
N104	67		X	Identification Code	AN	2	20	Facility/License Number
N1~WO~FA~123456\								
Syntax Notes: N103 is required. If either N103 or N104 is present, then the other is required.								
FTA Notes: None								

Seller Information Name Segment 2								Pos. No. 0500
Element ID	Elem Ref. #	Sub-Ele Ref. #	Field Status	Field Name	Field Type	Length Min Max		Field Description
N101	98		M	Entity Identification Code	ID	2	2	"SE" = Selling Party
N102	93		X	Name	AN	1	35	Seller's Name
N103	66		X	Identification Code Qualifier	ID	2	2	"24" = FEIN "34" = SSN "50" = BN — Canadian Business Number
N104	67		X	Identification Code	AN	9	18	Seller's FEIN or SSN or BN
N1~SE~Fuel Seller~24~111222333\								
Syntax Notes: At least one of N102 or N103 is required. If either N103 or N104 is present, then the other is required.								
FTA Notes: N102, N103 and N104 are required.								
NH Notes: Required for Distributor Receipt Schedules Required for Transporter Schedules Required for ODPC Schedules								

Position Holder Information or Delivering Exchange Party Information Name Segment 3								Pos. No. 0500
Element ID	Elem Ref. #	Sub-Ele Ref. #	Field Status	Field Name	Field Type	Length Min Max		Field Description
N101	98		M	Entity Identification Code	ID	2	2	"ON" = Position Holder
N102	93		X	Name	AN	1	35	Position Holder's Name
N103	66		X	Identification Code Qualifier	ID	2	2	"24" = FEIN "34" = SSN "50" = BN — Canadian Business Number
N104	67		X	Identification Code	AN	9	18	Position Holder's FEIN or SSN or BN + 2 character suffix
N1~ON~ABC Fuel~24~516888888\								
Syntax Notes: At least one of N102 or N103 is required. If either N103 or N104 is present, then the other is required.								
FTA Notes: If reporting position holder or 2-party exchange information this segment is required. For 2-party exchanges this segment defines the party of origin. N102, N103 and N104 are required.								

Receiving Exchange Party Information								
Name Segment 4								Pos. No. 0500
Element ID	Elem Ref. #	Sub-Ele Ref. #	Field Status	Field Name	Field Type	Length		Field Description
						Min	Max	
N101	98		M	Entity Identification Code	ID	2	2	"EC" = Position Holder
N102	93		X	Name	AN	1	35	Position Holder's Name or Control Name (First 4 position of tax payer business name)
N103	66		X	Identification Code Qualifier	ID	2	2	"24" = FEIN "34" = SSN "FI" = Federal Taxpayer 637 ID Number "50" = BN – Canadian Business Number
N104	67		X	Identification Code	AN	9	18	Position Holder's FEIN or SSN or IRS 637 Number or BN
N1~EC~ABC Fuel~24~51688888\								
Syntax Notes: At least one of N102 or N103 is required. If either N103 or N104 is present, then the other is required.								
FTA Notes: If reporting 2 party exchange information this segment is required otherwise do not use this segment. N102, N103 and N104 are required.								

Person Hiring Carrier (Consignor)								
Name Segment 5							Pos. No. 0500	
Element ID	Elem Ref. #	Sub-Ele Ref. #	Field Status	Field Name	Field Type	Length		Field Description
						Min	Max	
N101	98		M	Entity Identification Code	ID	2	2	"CI" = Consignor (Person Hiring the Carrier)
N102	93		X	Name	AN	1	35	Consignor Name
N103	66		X	Identification Code Qualifier	ID	2	2	"24" = FEIN "34" = SSN "50" = BN — Canadian Business Number
N104	67		X	Identification Code	AN	9	18	Consignor's (Person Hiring the Carrier) FEIN or SSN or BN
N1~CI~ABC Consigning~24~55577777\								
Syntax Notes:		At least one of N102 or N103 is required. If either N103 or N104 is present, then the other is required.						
FTA Notes:		N102, N103 and N104 are required.						
NH Notes:		Required for Transporter schedules						

Carrier Information								
Name Segment 6								
Pos. No. 0500								
Element ID	Elem Ref. #	Sub-Ele Ref. #	Field Status	Field Name	Field Type	Length		Field Description
						Min	Max	
N101	98		M	Entity Identification Code	ID	2	2	"CA" = Carrier Name
N102	93		X	Name	AN	1	35	Carrier Name
N103	66		X	Identification Code Qualifier	ID	2	2	"24" = FEIN "34" = SSN "50" = BN — Canadian Business Number
N104	67		X	Identification Code	AN	9	18	Carrier's FEIN or SSN or BN
N1~CA~XYZ Trucking~24~51515151\								
Syntax Notes:		At least one of N102 or N103 is required. If either N103 or N104 is present, then the other is required.						
FTA Notes:		N102, N103 and N104 are required.						
NH Notes:		Required for Distributor Receipt and Disbursement schedules Not required for Distributor Credit schedules Required for ODPC schedules						

Buyer/Consignee Information Name Segment 7								Pos. No. 0500
Element ID	Elem Ref. #	Sub-Ele Ref. #	Field Status	Field Name	Field Type	Length		Field Description
						Min	Max	
N101	98		M	Entity Identification Code	ID	2	2	"BY" = Buying Party (Purchaser/Consignee)
N102	93		X	Name	AN	1	35	Buyer Name
N103	66		X	Identification Code Qualifier	ID	2	2	"24" = FEIN "34" = SSN "50" = BN – Canadian Business Number
N104	67		X	Identification Code	AN	9	18	Purchaser's FEIN or SSN or BN
N1~O11 Purchaser~24~333222444\								
Syntax Notes: At least one of N102 or N103 is required. If either N103 or N104 is present, then the other is required.								
FTA Notes: N102, N103 and N104 are required.								
NH Notes: Required for Distributor Disbursement Schedules Required for Transporter Schedules Required for ODPC Schedules								

For Point (Address) of Delivery/Destination: (One of the following Options is Required)

Use Option 1 when the destination has an IRS TCN.

Use Option 2 when the destination does not have an IRS TCN.

Use Option 3 when the state requires a destination facility ID (currently used by the state of Florida).

Option 1

Point of Destination Name Segment 8								(One of the two options is used) Pos. No. 0500
Element ID	Elem Ref. #	Sub-Ele Ref. #	Field Status	Field Name	Field Type	Length		Field Description
						Min	Max	
N101	98		M	Entity Identification Code	ID	2	2	"DT" = Destination Terminal
N102 is not used.								
N103	66		X	Identification Code Qualifier	ID	2	2	"TC" = IRS Terminal Code
N104	67		X	Identification Code	AN	9	9	IRS Terminal Code (Code list is located at www.irs.gov/bus_info/excise/index.html)
N1~DT~~TC~T56NH0000\								
Syntax Notes: N103 is required. If either N103 or N104 is present, then the other is required.								
FTA Notes: None								
NH Notes: Destination Terminal (Option 1) is required when the destination has an IRS TCN Either Destination option 1 or Destination option 2 is required for all schedules								

Option 2

Point of Destination Name Segment 8								(One of the two options is used) Pos. No. 0500
Element ID	Elem Ref. #	Sub-Ele Ref. #	Field Status	Field Name	Field Type	Length		Field Description
						Min	Max	
N101	98		M	Entity Identification Code	ID	2	2	"ST" = Ship To
N102	93		X	Name	AN	2	2	Destination State Abbreviation
N1~ST~NH\								
Syntax Notes: N102 is required.								
FTA Notes: None								
NH Notes: For credit schedules 13C, 13H, 13K, point of destination must match point of origin								

Point of Destination Name Segment 8								Pos. No. 0500
Element ID	Elem Ref. #	Sub-Ele Ref. #	Field Status	Field Name	Field Type	Length		Field Description
						Min	Max	
N401	19	19	M	City Name	AN	2	30	Name of City
N402	156	156	O	State or Province Code	ID	2	2	State or Providence Abbreviation
N403	116	116	O	Postal Code	ID	3	11	ZIP or ZIP plus 4 Code
N404	26		X	Country Code	ID	2	3	Country (USA, CAN, MEX)
N405	309		X	Location Qualifier	ID	1	2	"CY" = County
N406	310		O	Location Identifier	AN	1	5	County
N4~Nashua~NH~~~USA\								
Syntax Notes: None								
FTA Notes: N404 through N406 are optional. N406 is based on the federal county codes (see: http://www.itl.nist.gov/fipspubs/co-codes/states.htm) N405 and N406 are not in the IRS 4030 map.								
NH Notes: Include this segment when using destination option 2. Include N404 Country Code if not USA. If not provided, Country Code will default to USA.								

Option 3

Point of Destination Name Segment 8								(One of the three options is used) Pos. No. 0500
Element ID	Elem Ref. #	Sub-Ele Ref. #	Field Status	Field Name	Field Type	Length		Field Description
						Min	Max	
N101	98		M	Entity Identification Code	ID	2	2	"WD" = Destination Facility
N102 is not used.								
N103	66		X	Identification Code Qualifier	ID	2	2	"FA" = Facility Identification
N104	67		X	Identification Code	AN	2	20	Facility/License Number
N1~WD~~~FA~123456\								
Syntax Notes: N103 is required. If either N103 or N104 is present, then the other is required.								
FTA Notes: None								

This FGS loop begins the individual shipments within the TFS loop. It is repeated when one of the following values changes:

Bill of Lading (Document) Number
 Bill of Lading Date (Date Shipped)
 Gallons

Bill of Lading Forms Group Segment								Pos. No. 1000
Element ID	Elem Ref. #	Sub-Ele Ref. #	Field Status	Field Name	Field Type	Length		Field Description
						Min	Max	
FGS01	350		M	Assigned Identification	AN	1	1	"D" = Schedule Detail
FGS02	128		X	Reference Identification Qualifier	ID	2	2	"BM" = Bill of Lading Number
FGS03	127		X	Reference Identification	AN	1	15	Bill of Lading Number
FGS~D~BM~00123456\								
Syntax Notes: If either FGS02 or FGS03 is present, then the other is required.								
FTA Notes: None								
NH Notes: This segment is required								

Sequence Number Reference Number Segment								
								Pos. No. 0200
Element ID	Elem Ref #	Sub-Ele Ref #	Field Status	Field Name	Field Type	Length		Field Description
						Min	Max	
REF01	428		M	Reference Identification Qualifier	ID	2	2	"55" = Sequence Number
REF02	427		X	Reference Identification	AN	4	9	Sequence Number
REF03	352		X	Description	AN	4	5	Error Response Code
REF~55~0001234\								
Syntax Notes: At least one of REF02 or REF03 is required.								
FTA Note: This segment is used to identify information for error processing. This segment can be generated by the filer when first filling to assist in identifying information or when responding to an error reported.								
REF02 is always required. REF03 is used for responding to an error.								

Bill of Lading Date Date/Time Reference Segment								
								Pos. No. 1200
Element ID	Elem Ref. #	Sub-Ele Ref. #	Field Status	Field Name	Field Type	Length		Field Description
						Min	Max	
DTM01	374		M	Date/Time Qualifier	ID	3	3	"095" = Bill of Lading Date
DTM02	373		X	Date	DT	8	8	Bill of Lading Date (CCYYMMDD)
DTM~095~20080505\								
Syntax Notes: DTM02 is required.								
FTA Notes: None								
NH Notes: This segment is required								

Bill of Lading Net Tax Information and Amount Segment								
								Pos. No. 1800
Element ID	Elem Ref. #	Sub-Ele Ref. #	Field Status	Field Name	Field Type	Length		Field Description
						Min	Max	
TIA01	817		M	Tax Information ID Number	AN	4	4	"5005" = Net
TIA02 and TIA03 are not used.								
TIA04	380		X	Quantity	R	1	15	Quantity
TIA05	355		M	Unit of Measurement Code	ID	2	2	"GA" = Gallons
TIA~5005~~~8000~GA\								
Syntax Notes: TIA04 is required. If TIA05 is present, then TIA04 is required.								
FTA Notes: None								
NH Notes: This segment is required								

Bill of Lading Gross Tax Information and Amount Segment								
								Pos. No. 1800
Element ID	Elem Ref. #	Sub-Ele Ref. #	Field Status	Field Name	Field Type	Length		Field Description
						Min	Max	
TIA01	817		M	Tax Information ID Number	AN	4	4	"5006" = Gross
TIA02 and TIA03 are not used.								
TIA04	380		X	Quantity	R	1	15	Quantity
TIA05	355		M	Unit of Measurement Code	ID	2	2	"GA" = Gallons
TIA~5006~~~8000~GA\								
Syntax Notes: TIA04 is required. If TIA05 is present, then TIA04 is required.								
FTA Notes: None								
NH Notes: This segment is required								

Bill of Lading Billed								
Tax Information and Amount Segment								Pos. No. 1800
Element ID	Elem Ref. #	Sub-Element Ref. #	Field Status	Field Name	Field Type	Length		Field Description
						Min	Max	
TIA01	817		M	Tax Information ID Number	AN	4	4	"5007" = Billed
TIA02 and TIA03 are not used.								
TIA04	380		X	Quantity	R	1	15	Quantity
TIA05	355		M	Unit of Measurement Code	ID	2	2	"GA" = Gallons
TIA-5007-----8000-GA\								
Syntax Notes: TIA04 is required.								
If TIA05 is present, then TIA04 is required.								
FTA Notes: None								

End of FGS loop for Individual shipments.

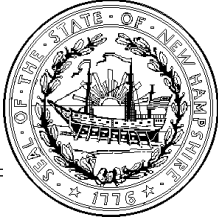
End of TFS loop for Schedule.

Transaction Set Trailer Description

End of Transaction Set Trailer Segment								(Required) Pos. No. 0100
Element ID	Elem Ref #	Sub-Ele Ref #	Field Status	Field Name	Field Type	Length		Field Description
						Min	Max	
SE01	96		M	Number of Included Segments	N0	1	10	Number of segments (inserted by translator)
SE02	329		M	Transaction Set Control Number	AN	4	9	Determined by Filer (same value in ST02, unique control number)
SE~156~10001\								
Syntax Notes: None								
FTA Notes: None								

End of Transaction Set

Appendix A - EDI Trading Partner Agreement



**STATE OF NEW HAMPSHIRE
DEPARTMENT OF SAFETY
DIVISION OF ADMINISTRATION
BUREAU OF ROAD TOLL OPERATIONS**

33 HAZEN DRIVE CONCORD, N.H. 03305

JOHN J. BARTHELMES
COMMISSIONER OF SAFETY

Trading Partner Agreement For Electronic Data Exchange

This Agreement is entered into by and between the New Hampshire Department of Safety ("Department") and _____ ("Licensee").

The Department and the Licensee wish to provide a means by which the Licensee will file its New Hampshire Motor Fuel Distributor, Oil Discharge and Pollution Control and/or Transporter return(s) by electronically transmitting data in substitution for conventional, paper-based documents and to assure that such return is legally valid and enforceable. In order to achieve this goal, the parties agree as follows:

1. **Terms and Amendments:** This Agreement shall be effective on the date it is signed by the Department and shall continue until terminated by either party. A copy of this properly signed Agreement shall be sent to the licensee. A party may terminate this Agreement by giving thirty (30) days written notice to the other party or by the cancellation of their Motor Fuel Distributor License. This Agreement may be amended at any time by executing a written addendum signed by both the Licensee and the Department.
2. **Standards:** The Licensee will electronically transmit return(s) to the Department according to the Department's standards and instructions that may be revised/updated by the Department from time to time. The Department will provide these standards and instructions to the Licensee in a reasonable time frame in advance of due dates to allow compliance with filing requirements.
3. **Transmission:** The Licensee shall access the Department's Internet website and upload the EDI file to the Department's secured web server.

System Operations and Security Procedures: The Licensee, at its own expense, shall provide and maintain the equipment, software, services and testing necessary for the Licensee to transmit the electronic return(s). The Department, at its own expense, shall provide and maintain the equipment, software, services and testing necessary for the Department to receive the electronic return(s). Each party shall use security procedures, which are reasonably sufficient to ensure that all transmissions of the return(s) are authorized and to protect its business records and data from improper access. In addition, the Licensee shall comply with all security procedures established and required by the Department.

4. **Signatures:** The Licensee's identification number and password, when included as part of the return filed pursuant to this Agreement, shall constitute the signature of the Licensee on the return as if such return were actually signed by the Licensee. Each Party shall adopt as its signature an electronic identification consisting of codes in each electronic transmission transmitted by such Party (the Signature). Each Party agrees that any signature of a Party affixed to or contained in any transmitted electronic transmission shall be sufficient to verify the Party originated such electronic transmission. Neither Party shall disclose to any unauthorized person the Signature of the other Party. [Note: An electronic signature is not effective as the original signature needed on the Trading Partner Agreement.]
5. **Receipt of Transmission:** An electronically submitted return shall be deemed to have been filed with the Department when the return, in the stipulated format, is accessible to the Department or the Department's third party service provider and meets the requirements of the Department. If the Licensee attempts to file and is unable to do so because the receipt computer is not available to receive a filing, the Department will not impose late filing penalties or interest provided the Licensee contacts the Department immediately when an access problem is identified and promptly remits the tax due.
6. **Acknowledgement of Transmission:** Upon receiving a successfully transmitted return from the Licensee, the Department or the Department's third party service provider will transmit an acknowledgement in return within one (1) business day from receipt of the Licensee's return. The acknowledgement will communicate only that the Department has received the Licensee's transmission and that it has either passed or failed the syntax verification. An acknowledgement does not imply any findings by the Department about the correctness of the return. A transmission that is received by the Department but is not in the stipulated format will not constitute a valid return.

The Licensee will receive a separate acknowledgement indicating that the transmission has passed or failed the Department's data validation process. It will be the Licensee's responsibility to retrieve the acknowledgement from the location specified by the Department.
8. **Garbled Transmissions:** If any transmission is received in an unintelligible or garbled form and the Department cannot identify the Licensee, no acknowledgement will be transmitted. The absence of an acknowledgement shall be treated as notice to the Licensee that the return was not received by the Department in the required format. The burden shall be on the Licensee to ensure that the Department receives a valid return in the required form and format within the time required.
9. **Record Retention:** The Licensee shall maintain records of the transactions covered by electronic filings for a period of not less than 4 years from the due date of the filing. Each Party agrees to maintain adequate back-up files to recreate electronic transmissions as required. Back-up files shall be subject to the terms of this Agreement to the same extent as the original data. Electronic transmissions shall be retained for such periods as required by relevant New Hampshire statutes.
10. **Admissibility of Returns/Reports as Evidence:** A certified copy of any return may be introduced in paper form as evidence in any judicial or administrative proceeding by either party to the same extent and under the same conditions as any other business record. Neither party shall contest the admissibility of any return on the basis that it was not originated or maintained in paper form.
11. **Payments:** Any Licensee filing a return electronically under this Agreement shall make payment of taxes due by use of electronic payment regardless of the tax amount. The Licensee shall follow the procedures of the Department's Electronic Payment Application Program, which allows utilization of automated clearinghouse (ACH) debit.

12. **Identifying Codes & Numbers:** To ensure proper identification of electronically transmitted returns, the parties will exchange the identifying qualifiers. Any changes in these qualifiers will be communicated to the other party before any transmission using the new qualifiers is sent.
13. **Certification:** An initial electronic transmission will not be authorized by either Party until subjected to reasonable testing to ensure compliance with the Department and its requirements. After the Department accepts the electronic transmission for production use, additional testing may be required when changes are made to the system environments, including but not limited to, installation of a new EDI translator or implementation of a new EDI version.
14. **Waiver:** The waiver of a breach of any provision of this Agreement shall not operate as or be construed to be a waiver of any subsequent breach of this Agreement. Any waiver shall operate as a waiver only with respect to the specific matter involved and in no way shall extend to any further matter.
15. **Entire Agreement:** This Agreement constitutes the final, entire, and complete agreement of the Parties with respect to the subject matter hereof; and supersedes any prior Agreement or understanding, whether written or oral, between or represented by the Parties relating to the subject matter.
16. **Amendment:** This Agreement shall not be changed, modified, or amended without the prior written consent of the Department.
17. **Governing Law:** This Agreement shall be governed by, and interpreted in accordance with the laws of the state of New Hampshire.
18. **Assignment:** The Licensee shall not assign or transfer any right or interest in and to this Agreement without the prior written consent of the Department. Any purported assignment without the prior written consent of the Department shall be void and of no force or effect.

The Trading Partner Agreement Partner Profile and signature box is on the next page.

Please complete the Trading Partner Agreement Partner Profile Below.**[Please type or legibly print all non-signature information.]****Company Name:** _____**Business Contact Name:** _____**Phone Number:** _____ **Fax Number:** _____**Address:** _____ **City, State, Zip:** _____**E-Mail Address:** _____**EDI Coordinator Name:** _____**Phone Number:** _____ **Fax Number:** _____**Address:** _____ **City, State, Zip:** _____**E-Mail Address:** _____**EDI Technical Contact Name:** _____**Phone Number:** _____ **Fax Number:** _____**Address:** _____ **City, State, Zip:** _____**E-Mail Address:** _____**Vendor Contact Name:** _____**Phone Number:** _____ **Fax Number:** _____**Address:** _____ **City, State, Zip:** _____**E-Mail Address:** _____**Access to the Internet to upload and download files from a secure site is required for participation in this program.****Licensee:**

Print Name of Licensee or Authorized Agent	Title
Signature of Licensee or Authorized Agent	Date

Department of Safety use only:

Print Name of Department's Authorized Agent	Title
Signature of Department's Authorized Agent	Date

Return original, signed Trading Partner Agreement to: NH Department of Safety, Division of Administration, Road Toll Bureau, EDI Coordinator, 33 Hazen Drive, Room 106, Concord, NH 03305. Originals returned to the Road Toll Bureau with non-signature information that is not typed or legibly printed will not be accepted.

Appendix B - Filing Procedures

Form MFD 1-S/AF, Motor Fuel and Aviation Fuel Distributor Report.

(a) An applicant shall provide the following information on form MFD 1-S/AF:

- (1) Period covered;
- (2) Licensee's:
 - a. Name and address;
 - b. Telephone number;
 - c. d. Federal employer identification number;
- (3) Opening inventory, which must agree with the prior month's ending inventory and includes items in transit;
- (4) Total receipts from schedules 2, 2E, 2F, 3 and 4;
- (5) Gallons of biodiesel refined, distilled, blended or manufactured;
- (6) Total disbursements from schedules 5, 5X, 6, 6F, 7, 8, and 9;
- (7) Inventory transfers between products;
- (8) Gain or loss;
- (9) Ending physical inventory;
- (10) Taxable gallons;
- (11) Total of tax-paid credits from schedules 13C, 13H and 13K;
- (12) Net taxable gallons;
- (13) Tax rate per gallon;
- (14) Tax due by product; and
- (15) Total amount due.

(b) The preparer shall print name and title, sign and date the form.

Forms MFD Schedule of Receipts 2, 2E, 2F, 3 and 4.

(a) An applicant shall submit the following on forms MFD schedules, 2E, 2F, 3 and 4:

- (1) Distributor's name, license number and federal employer identification number;
- (2) Schedule numbers as listed below:
 - a. MFD schedule #2 – Gallons received from New Hampshire licensed distributors in New Hampshire for New Hampshire bulk storage;

- b. MFD schedule #2E – Gallons received from New Hampshire licensed distributed in New Hampshire for export;
- c. MFD schedule #2F – Gallons received from New Hampshire licensed distributors in New Hampshire and direct shipped to customers;
- d. MFD schedule #3 – Gallons imported from another state direct to customer; or
- e. MFD schedule #4 – Gallons imported from another state into New Hampshire for bulk storage.

(3) Product type;

(4) Date – month and year;

(5) List of receipts to include:

- a. Carrier name and federal employer identification number;
- b. Mode of transportation;
- c. Points of origin and destination, both city and state;
- d. Supplier and federal employer identification number;
- e. Date received;
- f. Document number;
- g. Gross gallons; and
- h. Net gallons; and

(6) Page total.

Forms MFD Schedule of Disbursements 5, 5X, 6, 6F, 7, 8, and 9.

(a) An applicant shall supply the following on forms MFD schedules 5, 5X, 6, 6F, 7, 8 and 9:

(1) Distributor's name, license number and federal employer identification number;

(2) Schedule numbers as listed below:

- a. MFD schedule #5 – Gallons delivered – taxable;
- b. MFD schedule #5X – Gallons delivered to Air Carriers at a lower tax rate;
- c. MFD schedule #6 – Gallons delivered to NH licensed distributors;
- d. MFD schedule #6F – Gallons of dyed diesel and dyed kerosene sold for tax exempt purposes;
- e. MFD schedule #7 – Gallons exported;
- f. MFD schedule #8 – Gallons delivered to U.S. Gov't (Bulk) tax exempt; or
- g. MFD schedule #9 – Gallons delivered to State/Local Gov't (Bulk) tax exempt.

(3) Product type;

(4) Date – month and year;

- (5) List of shipments to include:
 - a. Carrier name and federal employer identification number;
 - b. Mode of transportation;
 - c. Points of origin and destination, both city and state;
 - d. Purchaser and federal employer identification number;
 - e. Date delivered;
 - f. Document number;
 - g. Gross gallons; and
 - h. Net gallons; and
- (6) Page total.

Forms MFD Schedule of Tax-Paid Credits 13C, 13H and 13K.

- (a) An applicant shall submit the following on forms MFD schedule #13C, #13H and #13K:
 - (1) Distributor's name, license number and federal employer identification number;
 - (2) Schedule number as listed below:
 - a. MFD schedule #13C – Retail Sales to US Gov't and their agencies;
 - b. MFD schedule #13H – Retail Sales to Local or State Gov't and their agencies; or
 - c. MFD schedule #13K – Retail Sales to State, Local or US Gov't and their agencies at the Air Carriers rate;
 - (3) Product Type;
 - (4) Date – month and year;
 - (5) List of Sales to include:
 - a. Points of origin and destination;
 - b. Purchaser's name and federal employer identification number;
 - c. Date delivered;
 - d. Gross gallons; and
 - e. Net gallons; and
 - (6) Page total.
- (b) An applicant may submit the following optional information on forms MFD schedule 13C, 13H and 13K:
 - (1) Carrier name and federal employer identification number;

- (2) Mode of transportation; or
- (3) Document number.

Form RT 51, Oil Discharge and Pollution Control Report

(a) Licensees shall file all monthly reports required by RSA 146-A:11-b, II–IV, RSA 146-D:3, III, RSA 146-F:3 II, RSA 147-B:12, I, and Administrative Rules Saf-C 4200 and 4300 with the bureau by the prescribed filing date.

(b) All reports shall be filed on form RT-51, Oil Discharge and Pollution Control Report, as follows::

- (1) Licensees with 100 or more total transactions during a reporting period shall submit reports electronically, with any and all road toll due paid by means of ACH debit transfer;
- (2) Licensees with less than 100 total transactions during a reporting period may submit paper returns, accompanied by a check made payable to the “State of NH – Road Toll” for the total amount of road toll due, as shown on the return; and
- (3)) Once a licensee files 100 or more transactions during any one reporting period, he/she shall file all future reports electronically, regardless of the number of transactions.

(c) Licensees required to submit reports electronically pursuant to (b)(1) above shall:

- (1) Submit reports via the web-based automated fuel tax system; or
- (2) Submit reports via electronic data interface, with the licensee bearing the cost to provide and maintain the equipment, software, security and other related expenses.

(d) Each licensee shall furnish the following, on a monthly basis, on form RT-51:

- (1) Licensee’s name, business address, federal employer identification number and telephone number;
- (2) Date, month and year of the reporting period;
- (3) License number;
- (4) Receipts, in whole gallons, from locations outside of New Hampshire for each of the following:
 - a. Automotive gasoline;
 - b. Aviation gasoline;
 - c. Diesel fuel;
 - d. Jet fuel;
 - e. Heating oil;
 - f. Motor oil; and
 - g. Other type of oil;
- (5) Receipts, in whole gallons, from locations within New Hampshire for each of the following:
 - a. Automotive gasoline;
 - b. Aviation gasoline;

- c. Diesel fuel;
 - d. Jet fuel;
 - e. Heating oil;
 - f. Motor oil; and
 - g. Other type of oil;
- (6) Total receipts of whole gallons for each of the following:
- a. Automotive gasoline;
 - b. Aviation gasoline;
 - c. Diesel fuel;
 - d. Jet fuel;
 - e. Heating oil;
 - f. Motor oil; and
 - g. Other type of oil;
- (7) Number of whole gallons received for export for each of the following:
- a. Automotive gasoline;
 - b. Aviation gasoline;
 - c. Diesel fuel;
 - d. Jet fuel;
 - e. Heating oil;
 - f. Motor oil; and
 - g. Other type of oil;
- (8) Number of whole gallons from tax-paid purchases for each of the following:
- a. Automotive gasoline;
 - b. Aviation gasoline;
 - c. Diesel fuel;
 - d. Jet fuel;
 - e. Heating oil;
 - f. Motor oil; and
 - g. Other type of oil;
- (9) Total non-taxable gallons for each of the following:

- a. Automotive gasoline;
- b. Aviation gasoline;
- c. Diesel fuel;
- d. Jet fuel;
- e. Heating oil;
- f. Motor oil; and
- g. Other type of oil;

(10) Total taxable gallons for each of the following:

- a. Automotive gasoline;
- b. Aviation gasoline;
- c. Diesel fuel;
- d. Jet fuel;
- e. Heating oil;
- f. Motor oil; and
- g. Other type of oil;

(11) Fee computation for each of the following:

- a. Automotive gasoline;
- b. Aviation gasoline;
- c. Diesel fuel;
- d. Jet fuel;
- e. Heating oil;
- f. Motor oil; and
- g. Other type of oil;

(12) Total fees due;

(13) Total amount due; and

(14) If filing by paper, licensee's signature, title and date signed.

(e) Form RT-51 shall be submitted and maintained together with all proper supporting documentation, including forms RT 1, 1A, 2E and 3, Schedule of Deliveries, for each type of product.

(f) Each separate schedule of deliveries shall include the following:

- (1) Licensee's name, license number and federal employer identification number;

(2) Proper schedule numbers as follows:

- a. RT 1 Gallons received from locations within New Hampshire;
- b. RT 1A Gallons from tax-paid purchases;
- c. RT 2E Gallons received for export; and
- d. RT 3 Gallons received from locations outside of New Hampshire, direct to customers;

(3) Product type;

(4) Date, month and year of reporting period;

(5) List of deliveries, including:

- a. Carrier name and federal employer identification number;
- b. Supplier name and federal employer identification number;
- c. Mode of transportation;
- d. Points of origin and destination – city and state;
- e. Purchaser name and federal employer identification number;
- f. Date delivered;
- g. Document number;
- h. Whole gross gallons; and
- i. Whole net gallons; and

(6) Page total.

(g) All required reports shall be filed, even in cases where no operations occurred within the state, during a given reporting period.

(h) The failure or inability to acquire forms or to file electronically, if required, shall not exempt licensees from their obligation to file the required reports within the time specified, as required in RSA 146-A:11-b, IV and these rules.

(i) A facsimile of the official forms provided by the bureau shall be accepted if the licensee is filing by paper and does not have access to the official forms.

(j) The failure of any person to procure a license, as required by RSA 146-A:11-b, II, and these rules, shall not relieve the person from liability for all fees incurred as a result of the receipt of products as described in RSA 146-A.

(k) Exports shall be reported on form RT 2E, but shall not be subject to the fee.

(l) Pursuant to RSA 294-E:7, I, a record or signature shall not be denied legal effect or enforceability solely because it is submitted in an electronic format.

Form RT 113, Motor Fuel and Petroleum Transporter Report.
--

(a) An applicant shall submit the following on form RT 113:

- (1) Licensee's:
 - a. Name;
 - b. Physical and mailing address;
 - c. License number; and
 - d. Federal employer identification number.
 - (2) Report period by month and year;
 - (3) Total gross gallons listed in schedule 14A;
 - (4) Total gross gallons listed in schedule 14B;
 - (5) Total gross gallons listed in schedule 14C;
 - (6) Total of all deliveries in gross gallons; and
 - (7) Total amount due.
- (b) If the licensee completes form RT 113, the licensee shall:
- (1) Print his/her title;
 - (2) Sign and date the form; and
 - (3) Include his/her telephone number.
- (c) If the a person other than the licensee completes form RT 113, the preparer shall:
- (1) Sign and date the form; and
 - (2) Include his/her address and telephone number.

Form RT 113 - Schedules 14A, 14B and 14C

- (a) Form RT 113 schedules 14A, 14B and 14C shall be submitted along with form RT 113.
- (b) An applicant shall submit the following on form RT-113 schedules 14A, 14B and 14C:
 - (1) Company name, license number and federal employer identification number;
 - (2) Schedule numbers as listed below:
 - a. RT 113 schedule #14A – Total gross gallons delivered from New Hampshire to out-of-state locations;
 - b. RT 113 schedule #14B – Total gross gallons delivered from out-of-state locations to New Hampshire; and
 - c. RT 113 schedule “14C – Total gross gallons delivered from New Hampshire to New Hampshire locations;
 - (3) Product type;
 - (4) Date – month and year;

(5) List of deliveries, including:

- a. Name and federal employer identification number of the person hiring the carrier;
- b. Seller's name and federal employer identification number;
- c. Mode of transportation;
- d. Points of origin and destination;
- e. Name and federal employer identification number of the person taking delivery;
- f. Date of delivery;
- g. Document number;
- h. Gross gallons; and
- i. Net gallons; and

(6) Page total.

Appendix C - New Hampshire Schedules

MFD 1-S/AF Motor Fuel and Aviation Fuel Distributor Report	
Schedule Code	Description
2	Gallons received from NH licensed distributors in NH for NH bulk storage
2E	Gallons received from NH licensed distributors in NH for export
2F	Gallons received from NH licensed distributors in NH and direct shipped to customers
3	Gallons imported from another state direct to customer
4	Gallons imported from another state into NH bulk storage
5	Gallons delivered - taxable
5X	Gallons delivered to Air Carriers taxable at a lower tax rate
6	Gallons delivered to NH licensed distributors
6F	Gallons of dyed diesel and dyed kerosene sold for tax exempt purposes
7	Gallons exported
8	Gallons delivered to US Gov't (Bulk) tax exempt
9	Gallons delivered to State/Local Gov't (Bulk) tax exempt
13C	Retail Sales to US Gov't and their agencies
13H	Retail Sales to Local or State Gov't and their agencies
13K	Retail Sales to State, Local or US Gov't and their agencies at the Air Carriers rate
RT113 Motor Fuel and Petroleum Products Transporter Report	
14A	Total gross gallons of all deliveries of fuel from New Hampshire to out-of-state locations
14B	Total gross gallons of all deliveries of fuel from out-of-state locations to New Hampshire
14C	Total gross gallons of all deliveries of fuel from New Hampshire to in-state locations
RT51 Oil Discharge and Pollution Control Report	
1	Gallons received from locations within NH
1A	Gallons from tax paid purchases
2E	Gallons received for export
3	Gallons received from locations outside NH – direct to customer

Appendix D - New Hampshire Product Codes

The following table lists product codes accepted by New Hampshire and specifies on which report each product code is valid.

Product Code	Description	Reports		
		MFD	ODPC	Transporter
065	Gasoline	Y	Y	Y
072	Kerosene – dye added	Y	Y	Y
092	Other	N	Y	Y
125	Aviation Gasoline	Y	Y	Y
130	Jet Fuel	Y	Y	Y
142	Kerosene – undyed	Y	Y	Y
152	Heating Oil	N	Y	Y
160	Diesel Fuel – undyed	Y	Y	Y
175	Residual Fuel Oil	N	Y	Y
188	Asphalt	N	Y	Y
228	Diesel Fuel - dye added	Y	Y	Y
B00	Biodiesel 100 %	Y	N	Y
B01	Biodiesel blend 1 %	Y	Y	Y
B05	Biodiesel blend 5 %	Y	Y	Y
B20	Biodiesel blend 20%	Y	Y	Y
B99	Biodiesel blend 99 %	Y	Y	Y
D00	Biodiesel 100 % – dye added	Y	N	Y
D01	Biodiesel blend 1 % – dyed	Y	Y	Y
D05	Biodiesel blend 5 % – dyed	Y	Y	Y
D20	Biodiesel blend 20% – dyed	Y	Y	Y
D99	Biodiesel blend 99 % - dyed	Y	Y	Y
E00	Ethanol – 100%	Y	Y	Y
E10	Ethanol blend 10%	Y	Y	Y
E85	Ethanol blend 85%	Y	Y	Y

Appendix E - Summary Codes / TIA Codes

Summary Code and TIA Code Usage

Summary and TIA codes are used for the following purposes (See complete list of codes below.):

813 Map

1. TIA code 5001 (Total Net Reported) is a check value for determining if all information is included in the EDI file.
2. ~~TOR – Terminal Operator Report~~ or SDR - Supplier/Distributor Report - TIA code 5002 (Physical Inventory) is used to report Ending and/or Beginning Inventory.
3. SDR – Supplier/Distributor Report – TIA code 5003 (Total Due) is a check value used to acknowledge and validate tax liability or taxable gallons.
4. CCR – Common Carrier Report – TIA code 5004 (Total Net Transported) is a check value used to acknowledge and validate the report.
5. SUM - Summary Code and TIA codes are used for identifying information not found in schedules or able to be derived from the schedules. The SUM loop provides a looping structure allowing multiple TIAs in a uniform format
6. Schedules – TIA 5005 (Net), 5006 (Gross) ~~and 5007 (Billed)~~ are used to report bill of lading volume details or further define summary detail.
7. Summary codes are defined and utilized for both quantity and money. The TIA segment of the summary has elements for both quantity and monetary values.

Summary Codes

S01	Inventory
	S01A Net Gains / Losses
	S01B Casualty Loss
	S01C Product Transfer – Disbursement
	S01D Product Transfer – Receipt
	S01E Meter Test – Disbursement
	S01F Meter Test – Receipt
S02	Taxes / Fees
	S02A Tax
	S02B Transfer / Lust Fee
	S02C Inspection Fee
	S02D Other Environmental Fee
	S02E Gaseous Permit Fee
S03	Credit
	S03A Tax Credit
	S03A01 Collection Allowance (IN – February 2002)
	S03B Fee Credit
	S03B01 Transfer Fee Credit (MO – September 2001)
	S03B02 Inspection Fee Credit (MO – September 2001)
	S03C Allowance
S04	Bad Debt Write-off
	S04A Tax Bad Debt Write-off
	S04B Fee Bad Debt Write-off
S05	General Return
	S05A Gallons/Liters Refined, Distilled or produced
	S05B Petroleum product repackaged into containers of 55 gallons or less
	S05C Ethanol Blended with Gasoline
	<i>(S05C is being phased out as of September 2005, see S05M01)</i>
	S05D Product Delivered
	S05E Other petroleum products first sold, offered for sale, or used in state (NB)
	S05F Total gallons of Motor Vehicle fuel first sold, offered for sale or used in state (NB)
	S05G Untaxed diesel used in a licensed vehicle
	S05H Kerosene blended with diesel and used in a licensed vehicle
	<i>(S05H is being phased out as of September 2005, see S05M02)</i>
	S05I Other exempt removals (CA – May 2001)
	S05J Approved for deduction (MS – January 2004)
	S05K Taxable sales total dollar amount (ND – January 2004)
	S05L Taxable sales gallons multiplied by the average sales price for a defined period
	<i>(ND – January 2004)</i>
	S05M Product Blended
	S05M01 Product Blended with Gasoline
	S05M02 Product Blended with Undyed Diesel
	S05M03 Product Blended with Dyed Diesel

FTA Uniformity TIA Codes

The data represented by these TIA codes is not derivable from schedules or represents a check value.		
5000	Not used	
5001	Total Net Reported	Header
5002	Net Physical Inventory	TOR , SDR
5003	Total Due	SDR
5004	Total Net Transported	CCR
5005	Net	SCH, SUM
5006	Gross	SCH, SUM
5007	Billed	SCH, SUM
5008	Interest	SUM
5009	Penalty	SUM
5010	Confidential Information	Header
5011 5199	Not used	

Appendix F - Transaction Type Mode Codes

New Hampshire Transaction Type Mode Codes	
Code	Description
B	Barge
BA	Book Adjustment
CE	Summary Information
GS	Gas Station
J	Truck
PL	Pipeline
R	Railroad
RT	Removal from Terminal
S	Ship
ST	Stationary Transfer

The X12 standard requires 2 characters in the field using this code. When a single character is used, left justify and pad with a space.

Appendix G - USA State, Canadian Province/ Territory & Mexican State Codes

USA State	Abbreviation	Canadian Province/Territory	Abbreviation
Alabama	AL	Alberta	AB
Alaska	AK	British Columbia	BC
Arizona	AZ	Manitoba	MB
Arkansas	AR	New Brunswick	NB
California	CA	Newfoundland	NF
Colorado	CO	Northwest Territory	NT
Connecticut	CT	Nova Scotia	NS
Delaware	DE	Nunavut	NU
District of Columbia	DC	Ontario	ON
Florida	FL	Prince Edward Island	PE
Georgia	GA	Quebec	QC
Hawaii	HI	Saskatchewan	SK
Idaho	ID	Yukon Territory	YT
Illinois	IL		
Indiana	IN	Mexican State	Abbreviation
Iowa	IA	Aguascalientes	AG
Kansas	KS	Baja California	BJ
Kentucky	KY	Baja California Sur	BS
Louisiana	LA	Campeche	CP
Maine	ME	Chiapas	CH
Maryland	MD	Chihuahua	CI
Massachusetts	MA	Coahuila	CU
Michigan	MI	Colima	CL
Minnesota	MN	Distrito Federal	DF
Mississippi	MS	Durango	DG
Missouri	MO	Guanajuato	GJ
Montana	MT	Guerrero	GR
Nebraska	NE	Hidalgo	HG
Nevada	NV	Jalisco	JA
New Hampshire	NH	Mexico	EM
New Jersey	NJ	Michoacan	MH
New Mexico	NM	Morelos	MR
New York	NY	Nayarit	NA
North Carolina	NC	Nuevo Leon	NL
North Dakota	ND	Oaxaca	OA
Ohio	OH	Puebla	PU
Oklahoma	OK	Queretaro	QA
Oregon	OR	Quintana Roo	QR
Pennsylvania	PA	San Luis Potosi	SL
Rhode Island	RI	Sinaloa	SI
South Carolina	SC	Sonora	SO
South Carolina	SD	Tabasco	TA
Tennessee	TN	Tamaulipas	TM
Texas	TX	Tlaxcala	TL
Utah	UT	Veracruz	VZ
Vermont	VT	Yucatan	YC
Virginia	VA	Zacatecas	ZT
Washington	WA		
West Virginia	WV		
Wisconsin	WI		
Wyoming	WY		

Appendix H - Revisions

Revision Date	Description of Change
1/24/2011	Modified N4 segments for Point of Origin and Point of Destination to allow use of N404 Country Code. <ul style="list-style-type: none">• Country code will default to USA unless entered.• Changed mapping examples for N4 segments to include Country Code. Changed N4 segments for company address and mailing address to specify 3 character country code.
8/10/2012	Updated MFD, ODP, and TRN filing requirement language in Appendix B.

Appendix I - Amended Reports

What is an amended report?

An amended report is any data reported to the Department that adjusts or corrects an original tax filing. The filer may amend a report by filing a supplemental report.

How should I file an amended report?

If the original report was filed on paper, then the amended must be filed by paper. If the original was submitted by EDI, then the amended must be submitted by EDI or via web. Note, after you begin production EDI filing, all reports (both original and amended) must be filed via EDI or web.

Can I put amendments for different periods in one EDI envelope?

No, amendments for different periods should be submitted in separate envelopes. Each file name carries the period covered of the file so it can be uniquely identified.

What information is needed when filing an Amended report?

The Department requires only the amended transaction(s) be filed along with all required summary (TIA) segments. Amended summary values should be sent as adjustments to the original filing.

Example:

Original transfer from undyed special fuel to jet fuel was submitted as 2000 gallons.

The transfer should have been submitted as 2050 gallons.

The amended value to be submitted is 50 gallons.

Sometimes our back-office systems process a schedule transaction with a bill of lading date for a prior filing period, but we have already filed that report with the Department. How should we handle these late loads?

Late loads should be sent as an amended EDI filing.

Appendix J - Sample EDI Files

MFD 1-S/AF Motor Fuel and Aviation Fuel Distributor Report (SDR)

(Formatted with carriage returns for viewing – in an actual filing, carriage returns would be omitted.)
The Motor Fuel and Aviation Fuel Distributor Report should be within its own ST/SE loop.

```
ISA~00~          ~00~          ~ZZ~123456789          ~ZZ~NHROADTOLL
~091120~1619~|~00403~000001745~0~T~^\\
GS~TF~12345678~NHROADTOLL~20081120~161945~1745~X~004030\\
ST~813~1745~1\\
BTI~T6~050~47~NHROADTOLL ~20081120~MOTO~24~123456789~49~1234~SV~XXXXXXXXXX~00\\
DTM~194~20081031\\
TIA~5001~~~95990~GA\\
N1~TP~Motor Fuel & Aviation Fuel Company\\
N3~2323 White Mountain Drive~P.O. Box 777\\
N4~Concord~NH~03103~USA\\
PER~CN~General Contact Name~TE~6035553333~FX~6035554444~EM~GeneralContact@MotorFuelCo.com\\
PER~EA~EDI Coordinator Name~TE~6035551111~FX~6035552222~EM~EDICoordinator@MotorFuelCo.com\\
TFS~T2~SDR~FW~MFD\\
DTM~184~20081031\\
TIA~5003~35230.86~~95990~GA\\
FGS~EI~PG~065\\
TIA~5002~~~11000~GA\\
FGS~EI~PG~161\\
TIA~5002~~~22000~GA\\
FGS~EI~PG~125\\
TIA~5002~~~33000~GA\\
FGS~EI~PG~130\\
TIA~5002~~~44000~GA\\
TFS~T3~S05A~PG~B00~94~CE\\      Biodiesel Manufactured
FGS~S\\
TIA~5006~~~70500~GA\\
TFS~T3~S01C~PG~065~94~CE\\      Product Transfer - Disbursement
FGS~S\\
TIA~5006~~~7790~GA\\
TFS~T3~S01D~PG~125~94~CE\\      Product Transfer - Receipt
FGS~S\\
TIA~5006~~~7790~GA\\
TFS~T3~S02~~~94~CE\\            Tax
FGS~S\\
TIA~5006~35230.86\\              Total Net Due
TIA~5008~0.00\\                  Interest
TIA~5009~0.00\\                  Penalty
TFS~T3~2~PG~065~94~PL\\
N1~SF~NH\\
N4~CONCORD~NH~~USA\\
N1~SE~FUEL SELLER~24~111333111\\
N1~CA~FUEL TRANSPORTER~24~333222333\\
N1~DT~~TC~T02NH0000\\
FGS~D~BM~30034\\
DTM~095~20081030\\
TIA~5005~~~45060~GA\\
TIA~5006~~~45060~GA\\
FGS~D~BM~456371\\
DTM~095~20081022\\
TIA~5006~~~43050~GA\\
TFS~T3~5~PG~065~94~J \\
```

N1~OT~~TC~T02NH0000\
N1~CA~FUEL TRANSPORTER~24~999888777\
N1~BY~FUEL BUYER~24~123123123\
N1~ST~NH\
N4~DOVER~NH~~USA\
FGS~D~BM~4343\
DTM~095~20081001\
TIA~5005~~~7980~GA\
TIA~5006~~~7990~GA\
FGS~D~BM~35677\
DTM~095~20081002\
TIA~5005~~~7970~GA\
TIA~5006~~~7980~GA\
SE~62~1745\
GE~1~1745\
IEA~1~000001745\

MFD 1-S/AF Motor Fuel and Aviation Fuel Distributor Report (SDR) - No Activity

ISA~00~ ~00~ ~ZZ~123456789 ~ZZ~NHROADTOLL
 ~091120~1619~|~00403~000001766~0~T~^\
 GS~TF~12345678~NHROADTOLL~20081120~161945~1763~X~004030\
 ST~813~1763~1\
 BTI~T6~050~47~NHROADTOLL~20081120~MOTO~24~123456789~49~1234~SV~XXXXXXXXXX~00\
 DTM~194~20081031\
 TIA~5001~~~95990~GA\
 N1~TP~Motor Fuel & Aviation Fuel Company\
 N3~2323 White Mountain Drive~P.O. Box 777\
 N4~Concord~NH~03103~USA\
 PER~CN~General Contact Name~TE~6035553333~FX~6035554444~EM~GeneralContact@MotorFuelCo.com\
 PER~EA~EDI Coordinator Name~TE~6035551111~FX~6035552222~EM~EDICoordinator@MotorFuelCo.com\
 TFS~T2~SDR~FW~MFD\
 REF~BE~1\
 SE~12~1763\
 GE~1~1763\
 IEA~1~000001766\

MFD 1-S/AF Motor Fuel and Aviation Fuel Distributor Report (SDR) - Amended Filing

ISA~00~ ~00~ ~ZZ~123456789 ~ZZ~NHROADTOLL
 ~091120~1619~|~00403~000001765~0~T~^\
 GS~TF~12345678~NHROADTOLL~20081120~161945~1765~X~004030\
 ST~813~1765~1\
 BTI~T6~050~47~NHROADTOLL ~20081120~MOTO~24~123456789~49~1234~SV~XXXXXXXXXX~6S\
 DTM~194~20081031\
 TIA~5001~~~95990~GA\
 N1~TP~Motor Fuel & Aviation Fuel Company\
 N3~2323 White Mountain Drive~P.O. Box 777\
 N4~Concord~NH~03103~USA\
 PER~CN~General Contact Name~TE~6035553333~FX~6035554444~EM~GeneralContact@MotorFuelCo.com\
 PER~EA~EDI Coordinator Name~TE~6035551111~FX~6035552222~EM~EDICoordinator@MotorFuelCo.com\
 TFS~T2~SDR~FW~MFD\
 DTM~184~20081031\
 TIA~5003~35230.86~~95990~GA\
 TFS~T3~S02~~~94~CE\
 FGS~S\
 TIA~5006~~~230.86\
 TIA~5008~0.00\
 TIA~5009~0.00\
 TFS~T3~5~PG~065~94~J \
 N1~OT~~~TC~T02NH0000\
 N1~CA~FUEL TRANSPORTER~24~999888777\
 N1~BY~FUEL BUYER~24~123123123\
 N1~ST~NH\
 N4~DOVER~NH~~USA\
 FGS~D~BM~4343\
 DTM~095~20081001\
 TIA~5005~~~7980~GA\
 TIA~5006~~~7990~GA\
 FGS~D~BM~4343\
 DTM~095~20081001\
 TIA~5005~~~6970~GA\
 TIA~5006~~~6980~GA\
 SE~32~1765\
 GE~1~1765\
 IEA~1~000001765\
 Tax
 Total Net Due
 Interest
 Penalty

RT-51 Oil Discharge & Pollution Control Report (SDR)

(Formatted with carriage returns for viewing – in an actual filing, carriage returns would be omitted.)
The Oil Discharge & Pollution Control Report should be within its own ST/SE loop.

```
ISA~00~                ~00~                ~ZZ~123456789          ~ZZ~NHROADTOLL
~091120~1619~|~00403~000001745~0~T~^\\
GS~TF~12345678~NHROADTOLL~20081120~161945~1745~X~004030\\
ST~813~1745~1\\
BTI~T6~050~47~NHROADTOLL~20081120~MOTO~24~123456789~49~1234~SV~XXXXXXXXXX~00\\
DTM~194~20081031\\
TIA~5001~~~95990~GA\\
N1~TP~Oil Discharge Company\\
N3~2323 White Mountain Drive~P.O. Box 777\\
N4~Concord~NH~03103~USA\\
PER~CN~General Contact Name~TE~6035553333~FX~6035554444~EM~GeneralContact@MotorFuelCo.com\\
PER~EA~EDI Coordinator Name~TE~6035551111~FX~6035552222~EM~EDICoordinator@MotorFuelCo.com\\
TFS~T2~SDR~FW~OPDC\\
DTM~184~20081031\\
TIA~5003~35230.86~~95990~GA\\
TFS~T3~S01C~PG~065~94~CE\\      Product Transfer - Disbursement
FGS~S\\
TIA~5006~~~7790~GA\\
TFS~T3~S01D~PG~065~94~CE\\      Product Transfer - Receipt
FGS~S\\
TIA~5006~~~7790~GA\\
TFS~T3~S02~~~94~CE\\      Tax
FGS~S\\
TIA~5006~35230.86\\      Total Net Due
TIA~5008~0.00\\      Interest
TIA~5009~0.00\\      Penalty
TFS~T3~1~PG~142~94~PL\\
N1~OT~~~TC~T02NH0000\\
N1~CA~FUEL TRANSPORTER~24~333222333\\
N1~SE~FUEL SELLER~24~111333111\\
N1~BY~FUEL BUYER~24~333000333\\
N1~ST~NH\\
N4~CONCORD~NH~~USA\\
FGS~D~BM~30034\\
DTM~095~20081030\\
TIA~5005~~~45000~GA\\
TIA~5006~~~45060~GA\\
FGS~D~BM~456371\\
DTM~095~20081022\\
TIA~5005~~~45000~GA\\
TIA~5006~~~43050~GA\\
TFS~T3~3~PG~065~94~J \\
N1~SF~ME\\
N4~KITTEY~ME~~USA\\
N1~CA~FUEL TRANSPORTER~24~999888777\\
N1~SE~FUEL SELLER~24~333000333\\
N1~BY~FUEL BUYER~24~123123123\\
N1~ST~NH\\
N4~DOVER~NH~~USA\\
FGS~D~BM~4343\\
DTM~095~20081001\\
TIA~5005~~~7980~GA\\
TIA~5006~~~7990~GA\\
FGS~D~BM~35677\\
DTM~095~20081002\\
```


TIA~5005~~~7980~GA\
TIA~5006~~~7980~GA\
SE~55~1745\
GE~1~1745\
IEA~1~000001745\

RT113 Motor Fuel and Petroleum Products Transporter Report (CCR)

(Formatted with carriage returns for viewing – in an actual filing, carriage returns would be omitted.)
The Motor Fuel Transporter Report should be within its own ST/SE loop.

```
ISA~00~          ~00~          ~ZZ~123456789          ~ZZ~NHROADTOLL
~091120~1619~|~00403~000001788~0~T~^\\
GS~TF~12345678~NHROADTOLL~20081120~161945~1788~X~004030\\
ST~813~1788~1\\
BTI~T6~050~47~NHROADTOLL ~20081120~MOTO~24~123456789~49~1234~SV~XXXXXXXXXX~00\\
DTM~194~20081031\\
TIA~5001~~~95990~GA\\
N1~TP~Fuel Transport Inc\\
N3~2323 White Mountain Drive~P.O. Box 777\\
N4~Concord~NH~03103~USA\\
PER~CN~General Contact Name~TE~6035553333~FX~6035554444~EM~GeneralContact@MotorFuelCo.com\\
PER~EA~EDI Coordinator Name~TE~6035551111~FX~6035552222~EM~EDICoordinator@MotorFuelCo.com\\
TFS~T2~CCR\\
TIA~5004~0.00~~19447~GA\\
TFS~T3~S02~~~94~CE\\
FGS~S\\
TIA~5008~0.00\\
TIA~5009~0.00\\
TFS~T3~14B~PG~125~94~R \\
N1~OT~~TC~T02NH0000\\
N1~CA~FUEL TRANSPORT Inc~24~111999111\\
N1~SE~SELLER XYZ~24~555444555\\
N1~BY~BUYER ABC~24~123123123\\
N1~ST~NH\\
N4~PORTSMOUTH~NH~~USA\\
FGS~D~BM~12544\\
DTM~095~20081003\\
TIA~5005~~~30030~GA\\
TIA~5006~~~30000~GA\\
TFS~T3~14B~PG~130~94~J \\
N1~OT~~TC~T02NH0000\\
N1~CA~FUEL TRANSPORT Inc~24~111999111\\
N1~SE~SELLER XYZ~24~555444555\\
N1~BY~BUYER ABC~24~123123123\\
N1~ST~NH\\
N4~NEWINGTON~NH~~USA\\
FGS~D~BM~12756\\
DTM~095~20081010\\
TIA~5005~~~8020~GA\\
TIA~5006~~~8010~GA\\
FGS~D~BM~12757\\
DTM~095~20081012\\
TIA~5005~~~8020~GA\\
TIA~5006~~~8010~GA\\
SE~42~1788\\
GE~1~1788\\
IEA~1~000001788\\
```

Interest
Penalty