

Employees of the Dearborn Brothers Tannery, Ca. 1875

The 2017 NH State Conservation and Rescue Archaeology Program Historical Archaeology field school will take place at “the Hollow” located at Livermore Falls, on the Pemigewasset River, in the towns of Plymouth, Holderness and Campton, NH.

A preliminary survey was conducted during the 2016 SCRAP program at Livermore Falls. The study identified numerous archaeological features associated with occupation at the “Hollow”. It is anticipated that archaeological remains of milling and other 17th to 19th century light industrial activities including associated worker’s residences, a school and a store may still exist within the “Hollow”. Field school participants will engage in research and excavation at one of the foundations previously identified. Students will document specific activity areas that are associated with the site. Data recovery techniques, artifact identification and excavation documentation skills will be taught.

The field school is structured in two sessions, each two weeks long (August 7-18 and August 21-Sept 1). Fieldwork will take place daily on weekdays from 8 AM to 4 PM.

SCRAP Field School in Historical Archaeology

The “Hollow” Livermore Falls, NH August 7-September 1

All fieldwork and instruction will be directed by David Trubey and Edna Feighner archaeologists with the Division of Historical Resources. The field school will conform to standards for archaeology set by the National Park Service.



Fibreboard foundation, 2016

For more information, contact the NH Division of Historical Resources at **603-271-3485**

**NH STATE CONSERVATION AND RESCUE ARCHAEOLOGY PROGRAM
2017 Field School Registration Form**

NAME _____ **E-MAIL** _____

ADDRESS _____ **PHONE #(S)** _____

Date of Birth _____ (*Participants must be at least 16 years of age*)

Please check below the sessions(s) you plan to attend and your participation status.

_____ Session 1 August 7 -- August 18

_____ Session 2 August 21 – September 1

_____ SCRAP Volunteer

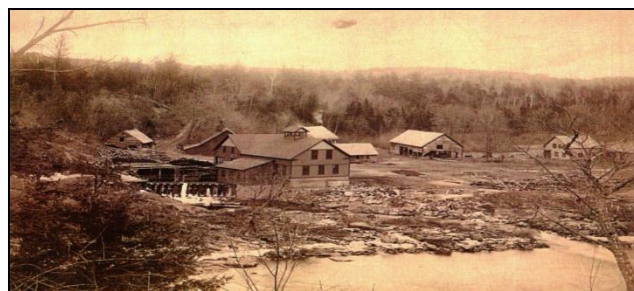
_____ Undergraduate Credit Student

_____ Graduate Credit Student

VOLUNTEER PARTICIPATION

Participants may obtain academic credit through Plymouth State University at either the undergraduate or graduate levels. Each week of participation is equivalent to one credit, and students may register for two to four credits. Credit students will be evaluated on their participation in field and laboratory work, plus completion of a research project. Costs for field school credit students include \$50 equipment and supplies fee, tuition and mandatory credit fees. These are: Resident undergraduate tuition and fees are \$475 per credit and Non-Resident Undergraduate tuition and fees are \$505 per credit. Resident graduate tuition and fees are \$541 per credit and Non-Resident graduate tuition and fees are \$618 per credit plus a \$30 registration fee. PSU registration forms can be obtained by contacting:

Individuals may participate as **SCRAP** volunteers. There is no fee for participation as a volunteer; however we request a \$40 donation to defray costs of supplies and instructional materials. Volunteers will receive the same instruction as credit students. Successful completion of the fieldwork will earn SCRAP certification for Survey and Excavation Technician status.



Arthur Homan's Pulp Mill ca. 1888

Registrar
Plymouth State University
17 High Street, MSC #7
Plymouth, New Hampshire 03264
(603) 535-2345
psu-registrar@plymouth.edu

Please complete the above form and include a brief statement describing your reasons for applying to the field school.

Return by June 2, 2017
to: David.Trubey@DCR.NH.Gov

Or mail to: David Trubey, Archaeologist/GIS
NHDHR
19 Pillsbury St., 2nd Floor
Concord, NH 03301-3570