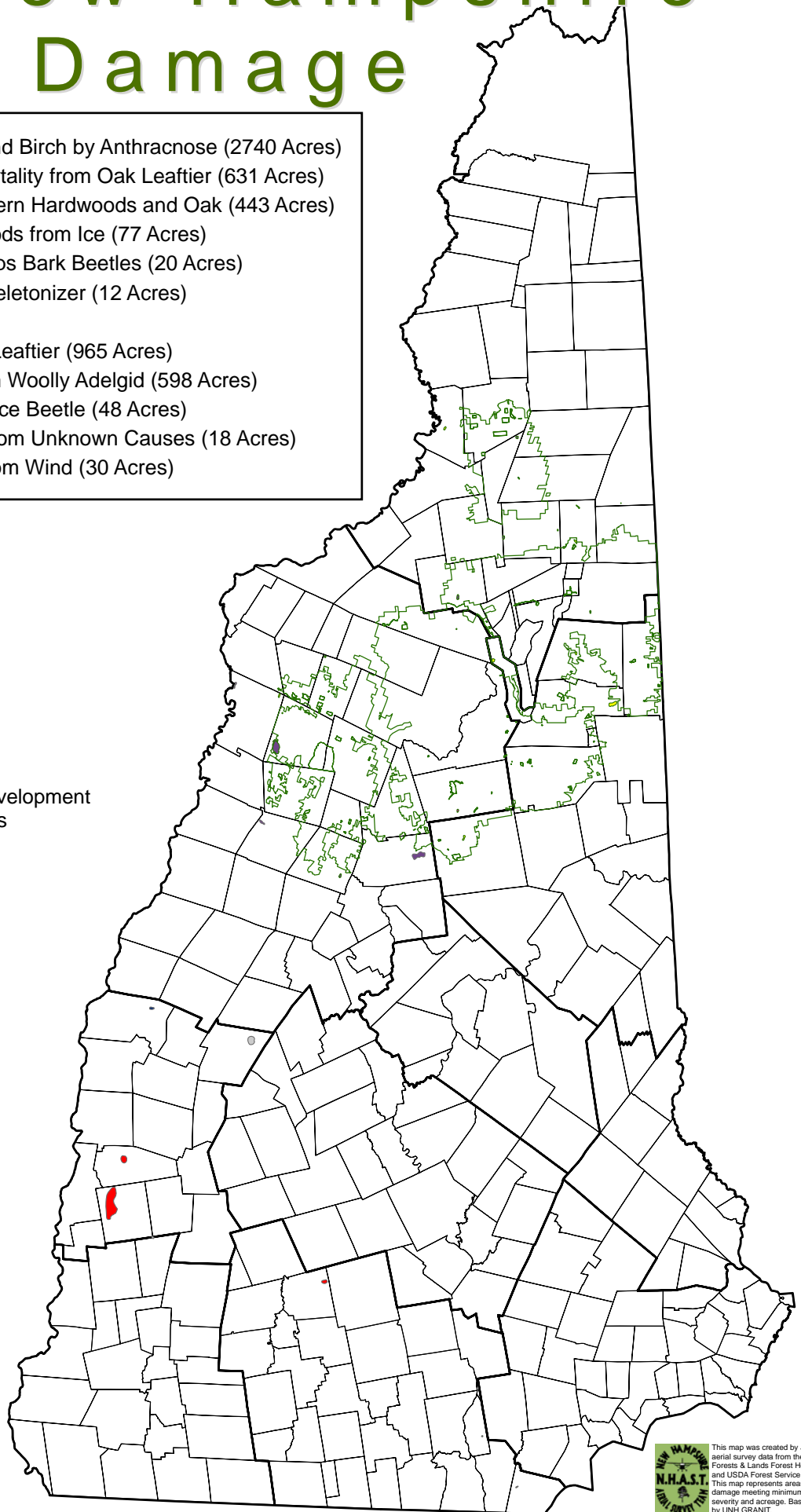
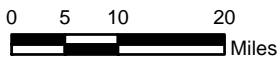


2011 New Hampshire Forest Damage

- Defoliation of Sugar Maple and Birch by Anthracnose (2740 Acres)
- Defoliation, Dieback, and Mortality from Oak Leaf-tier (631 Acres)
- Unknown defoliation of Northern Hardwoods and Oak (443 Acres)
- Dieback of Northern Hardwoods from Ice (77 Acres)
- Mortality of White Pine from Ips Bark Beetles (20 Acres)
- Defoliation of Oak by Oak Skeletonizer (12 Acres)
- WMNF
- Defoliation of Oak from Oak Leaf-tier (965 Acres)
- Defoliation of Fir from Balsam Woolly Adelgid (598 Acres)
- Mortality of Spruce from Spruce Beetle (48 Acres)
- Discoloration of White Pine from Unknown Causes (18 Acres)
- Mortality of Spruce and Fir from Wind (30 Acres)



State of New Hampshire
 Dept. of Resources & Economic Development
 Division of Forests & Lands
 Forest Protection Bureau
 Forest Health Section
 PO Box 1856
 Concord, NH 03302
 603-464-3016



This map was created by Jen Weimer using aerial survey data from the NH Division of Forests & Lands Forest Health Program and USDA Forest Service Northeastern Area. This map represents areas of forest damage meeting minimum thresholds of severity and acreage. Base data provided by UNH GRANIT.