



New Hampshire's
Percent for Art Program
A Public Process for Public Buildings

NHTI's Grappone Hall,
Concord

A New Building Project
2010 – 2011*

*Approved in FY2005 Capital Budget

About the NHTI's Grappone Hall

This building is a Silver LEED certified building that opened in 2009. The Beverly D. Grappone Hall serves as a nursing education center with a Clinical Resource Center that is modeled after the hospital environment.

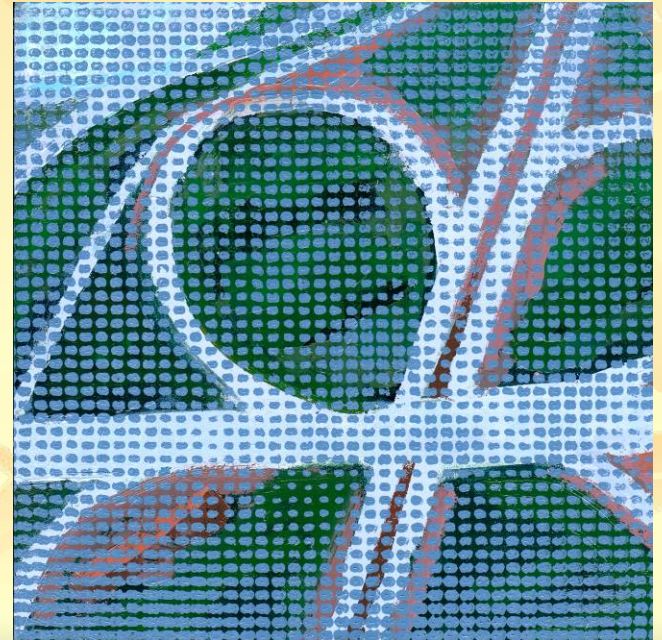
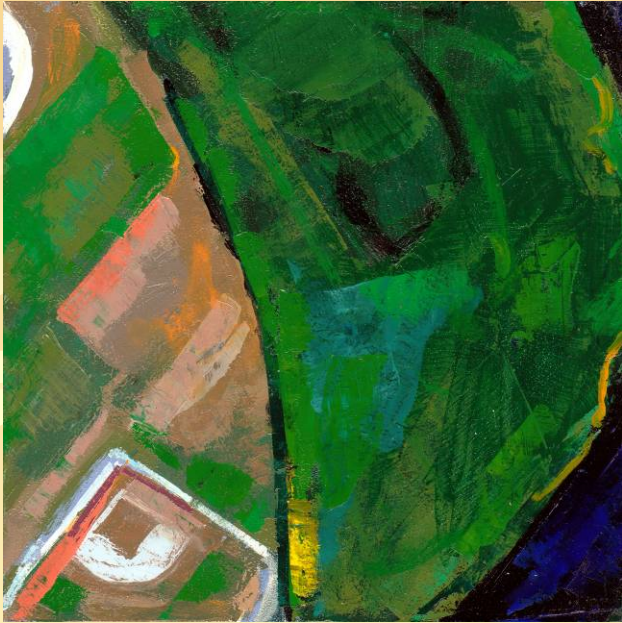
Desired Themes for Artwork

The Site Selection Committee identified these themes, metaphors and tone for the artwork.

- Lively
- History
- Learning
- Technology
- Eco-friendly
- Caring & giving
- Growth
- Synapse
- Hope & positive future
- Cutting edge & contemporary
- Risk taking & adventurous
- Nursing
- Vitality
- Health
- Cultural diversity



***Mind & Matter* by Frank Gregory. This mural melds the geometry of the mind with an aerial view of the college's surrounding area to create a metaphoric connection.**



**Details of *Mind & Matter*.
Artwork in the 2nd Floor student
study lounge and is made up of
288 individual pieces.**

Artwork in progress



Artist Frank Gregory in his studio.



***Sequences* by Ingrid Pichler. This stained painted glass installation features a bold DNA strand as a central theme with figures running along the lower course.**

Details of Sequences.
Artwork is located in the
main lobby.



Percent for Art Program

- To learn more about New Hampshire's Percent for Art Program visit:
 - <http://www.nh.gov/nharts/programservices/percentforart.htm>
- Would you like to learn about future Request for Artist Proposals? visit:
 - <http://www.nh.gov/nharts/newsandcalendar/pdf/e-newssubscriptionform.pdf>