

## Using Environmental Health Data to Drive Action

### Environmental Public Health Tracking

Funded by the Centers for Disease Control and Prevention, the NH Tracking Program helps policymakers, health professionals, scientists, researchers and others to:

- Advance research on possible linkages between environmental hazards and health outcomes;
- Monitor trends in environmental hazards and health actions; and
- Use data to develop, implement, and evaluate public health actions to reduce exposure and improve public health.

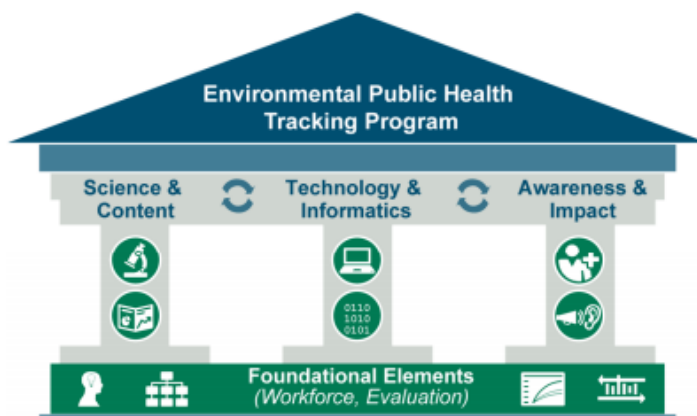
### Our Strategic Pillar Framework

The Environmental Public Health Tracking Program's strategic pillar framework improves alignment and integration of program activities, increases collaboration, and manages priority issues and gaps identified by stakeholders.

**Science and Content:** Delivers relevant and actionable scientific content that addresses key environmental public health priorities and needs.

**Technology and Informatics:** Improves processes to efficiently generate and deliver data and information to stakeholders.

**Awareness and Impact:** Drives efforts to strengthen relationships and channels of communication with key partners, by expanding awareness of capabilities, resources and use of data.

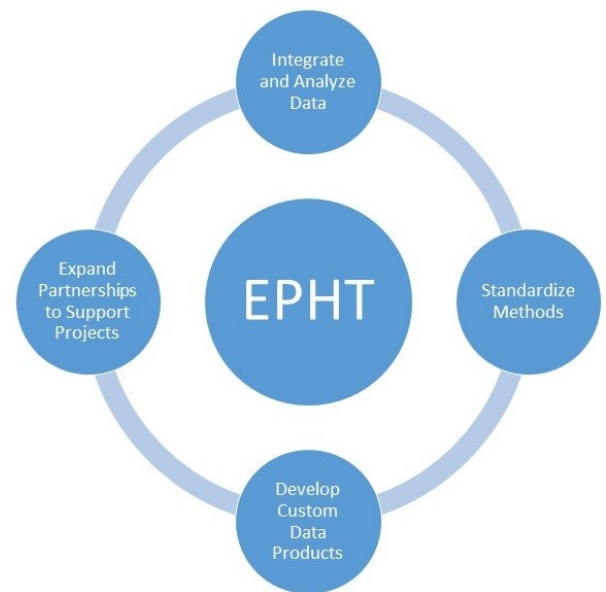


### Unique Framework Strengthens Program

The NH Tracking Program is organized around this strategic pillar framework, enabling staff to provide technical assistance, education and outreach, data analysis, and surveillance support as well as create custom data communication products.

### Tracking Program Drives Public Health Action

The NH Tracking Program's commitment to data-driven public health action can assist programs, researchers and health officials with critical decisions about where to target public health resources and interventions through:



**Data Analysis:** Data and trend analysis at the census tract, town, county and state level.

**Standardized Methodology:** Ensure accuracy, reproducibility and adoption of best practices.

**Data Products:** Development of new data products to increase awareness and inform decisions.

**Data Collaboration:** Collaborate with internal and external stakeholders to utilize data to drive public health action and policies.

Working together we can drive public health action, inform program decisions and improve policy.

# Using Environmental Health Data to Drive Action

## NH Tracking Program Staff

### Kathleen Bush

Program Manager  
kathleen.bush@dhhs.nh.gov

### Lynne Clement

Public Health Communication  
Specialist  
lynne.clement@dhhs.nh.gov

### Samuel Harris

Data Analyst  
samuel.harris@dhhs.nh.gov

### Dennis Holt

Environmental Health Data Analyst  
dennis.holt@dhhs.nh.gov

### Nicole Karlsson

Data Analyst  
nicole.karlsson@dhhs.nh.gov

### Al Lemay

Business Analyst  
alan.lemay@dhhs.nh.gov

### Michele Roberge

Bureau Chief, Public Health Protection  
michele.roberge@dhhs.nh.gov

### Nicholas Shonka

Data Analyst  
nicholas.shonka@dhhs.nh.gov

Follow us:

 @NHPubHealth

 @NHPubHealth

 @NHPubHealth



## Nationally Consistent Data Measures Improve Public Health

The building blocks of the national network are state and local health departments around the country that are funded to build local tracking systems. These systems supply data to the National Tracking Network and address local environmental public health concerns in core areas:

- Air Quality
- Asthma and COPD
- Birth Outcomes
- Cancer
- Childhood Lead Poisoning
- Climate Change
- CO Poisoning
- Drinking Water Quality
- Heart Disease
- Life Expectancy
- Radon
- Tickborne Illness



## NH Health WISDOM Data Portal

NH Health WISDOM is an interactive website aggregating public health data and producing customized reports, maps and time trends. The portal includes the Tracking Program's surveillance data on environmental hazards, exposures, and associated health effects.

Access the data portal at: [www.wisdom.nh.gov](http://www.wisdom.nh.gov)

## NH Tracking Program Highlights (2017-2022)

The NH Tracking Program, with input from our Technical Advisory Group, routinely identifies special project areas that link data to action.

- **Biomonitoring TrACE Study:** Providing technical assistance, funding well water quality tests, and supporting outreach and education.
- **Small Area Analysis:** Exploring trends in social, environmental, and health data at the neighborhood scale.
- **Well Water Quality:** Supporting environmental health capacity building through data integration to identify high-priority areas for targeted outreach and education.
- **ATSDR APPLETREE Choose Safe Places:** Engaging with stakeholders to establish safe-siting criteria for early childcare and education centers.
- **Mini Grants for Lead Poisoning Prevention:** Building environmental health capacity among Regional Public Health Networks.

For more information, visit: [nh.gov/EPHT](http://nh.gov/EPHT)