

Walpole - Charlestown

NH 12 Improvement Project

Project Advisory Committee Meeting #5



June 11th, 2008



Agenda

- Introduction (Don)
- Confirm Updated Public Involvement Plan (Nate)
- Confirm Vision Statement (Nate)
- Discussion and Consensus on Screening Criteria (Nate)
- Brainstorm Conceptual Alternatives (Don, CR, Nate)
- Next Steps & Assignment (Don)


Public Involvement Plan

The Public Involvement Plan is a “living document” that will be updated throughout the CSS process.

Updates Include:



- Committee membership
- PAC Meeting Schedule

**Walpole - Charlestown #14747
Public Involvement Plan**



Upper Valley Lake Sunapee Regional Planning Commission
New Hampshire Department of Transportation
Town of Charlestown, New Hampshire
Town of Walpole, New Hampshire

Adopted: October 10, 2007
Revised: June 11, 2008



Vision Statement

4-09-08

The Route 12 corridor will be safe, efficient, attractive, and environmentally sensitive, while adequately serving the needs of the motoring public, bicyclists, pedestrians and commercial traffic including rail service. Route 12 will be a wider road with adequate shoulders, appropriate guardrails, and safe passage for bicyclists and pedestrians, while providing better access and parking to enjoy the river. This project will realistically maximize the limited space available for the various modes of transportation, while preserving and enhancing the scenic qualities of the area for travelers and residents.

CSS Steps



Screening Criteria

Screening Criteria will be used to evaluate design alternatives.

Screening Criteria are based on the key issues identified in the problem and vision statements.



Screening Criteria

- UVLSRPC and NHDOT reviewed the problem and vision statements and produced a draft set of Screening Criteria for Committee review.
 - Access
 - Aesthetics
 - Environment
 - Implementation
 - Mobility
 - Safety



Screening Criteria

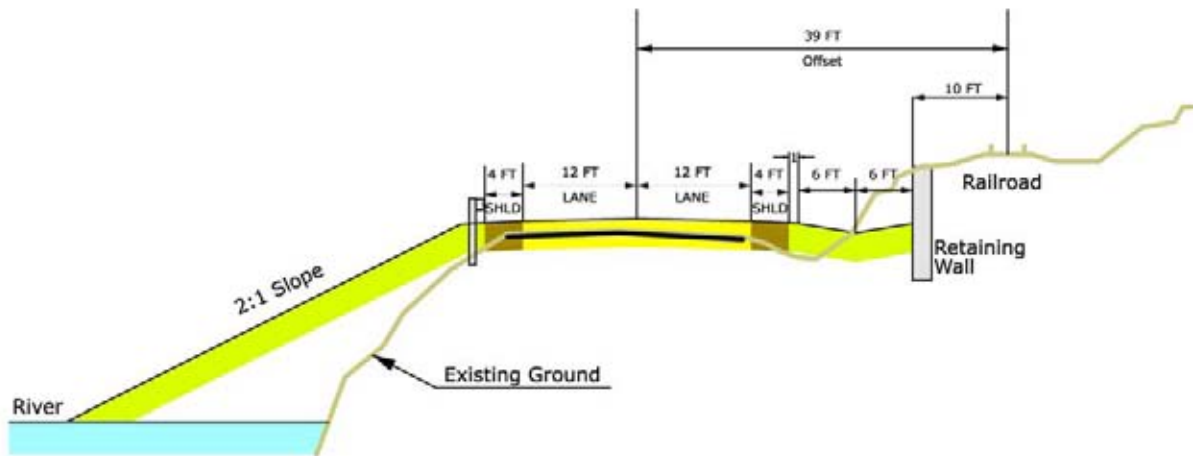
Do the draft Screening Criteria fit your needs?



Brainstorming Alternatives

- NHDOT has prepared a preliminary study alternative to serve as a starting point for brainstorming additional alternatives.
 - 12' Lanes
 - 4' Shoulders
 - 39' Offset from the Railroad
 - Railroad held as a control, with widening occurring to the west

Preliminary Study Alternative



"12 - 4" TYPICAL SECTION
39 Ft Offset from Railroad

Walpole - Charlestown
State Project # 14747
Federal Project # X-A000(487)

Next PAC Meeting

PAC Meeting # 6

Wednesday, August 13th, 2008

Silsby Library/Municipal Building

Community Room

Homework Assignments:

Think About the Alternatives!

Thank You

Questions ???