

Dalton, NH - Gilman, VT



Bridge Hill Road over the Connecticut River

- NHDOT Bridge No. 089/130
- Constructed 1997 - 591' Long and 39'-6" Wide
- 2009 AADT - 1,300
- No Posting Required

Project Location

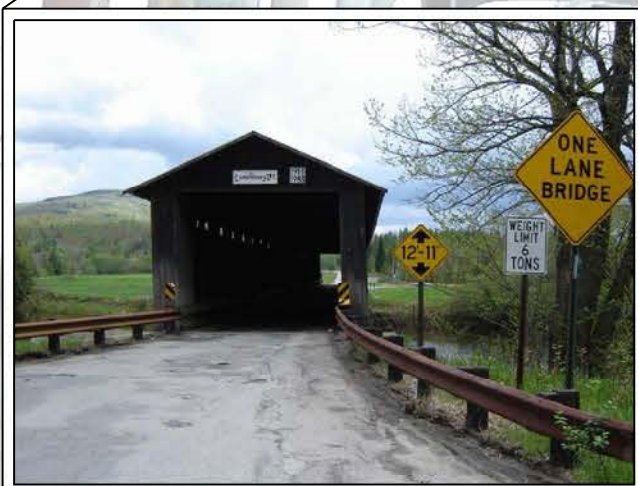
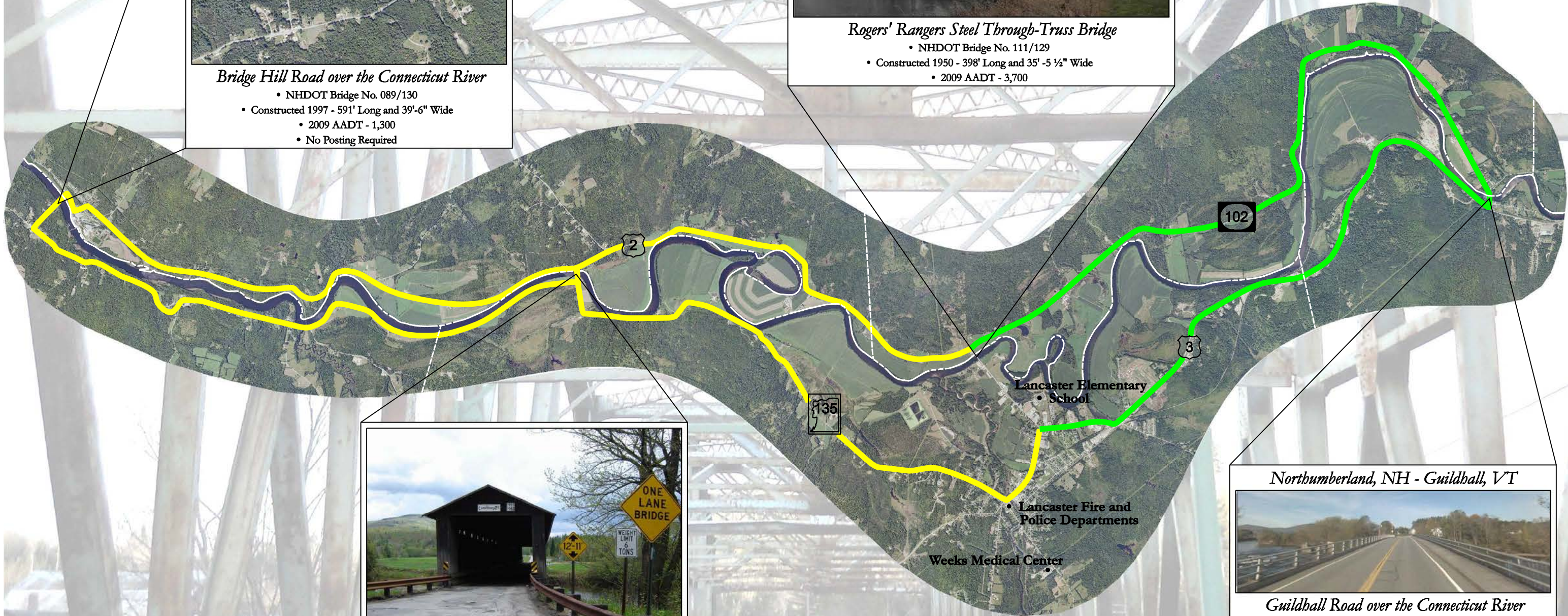


Rogers' Rangers Steel Through-Truss Bridge

- NHDOT Bridge No. 111/129
- Constructed 1950 - 398' Long and 35' - 5 1/2" Wide
- 2009 AADT - 3,700

LEGEND

- Preferred Detour Route (13.2 Miles)
- Optional Detour Route (21.6 Miles)



Mt. Orne Covered Bridge

- Vehicular Traffic Weight Limit

Northumberland, NH - Guildhall, VT



Guildhall Road over the Connecticut River

- NHDOT Bridge No. 141/059
- Constructed 1984 - 314' Long and 37'-6" Wide
- 2010 AADT - 1,100
- No Posting Required