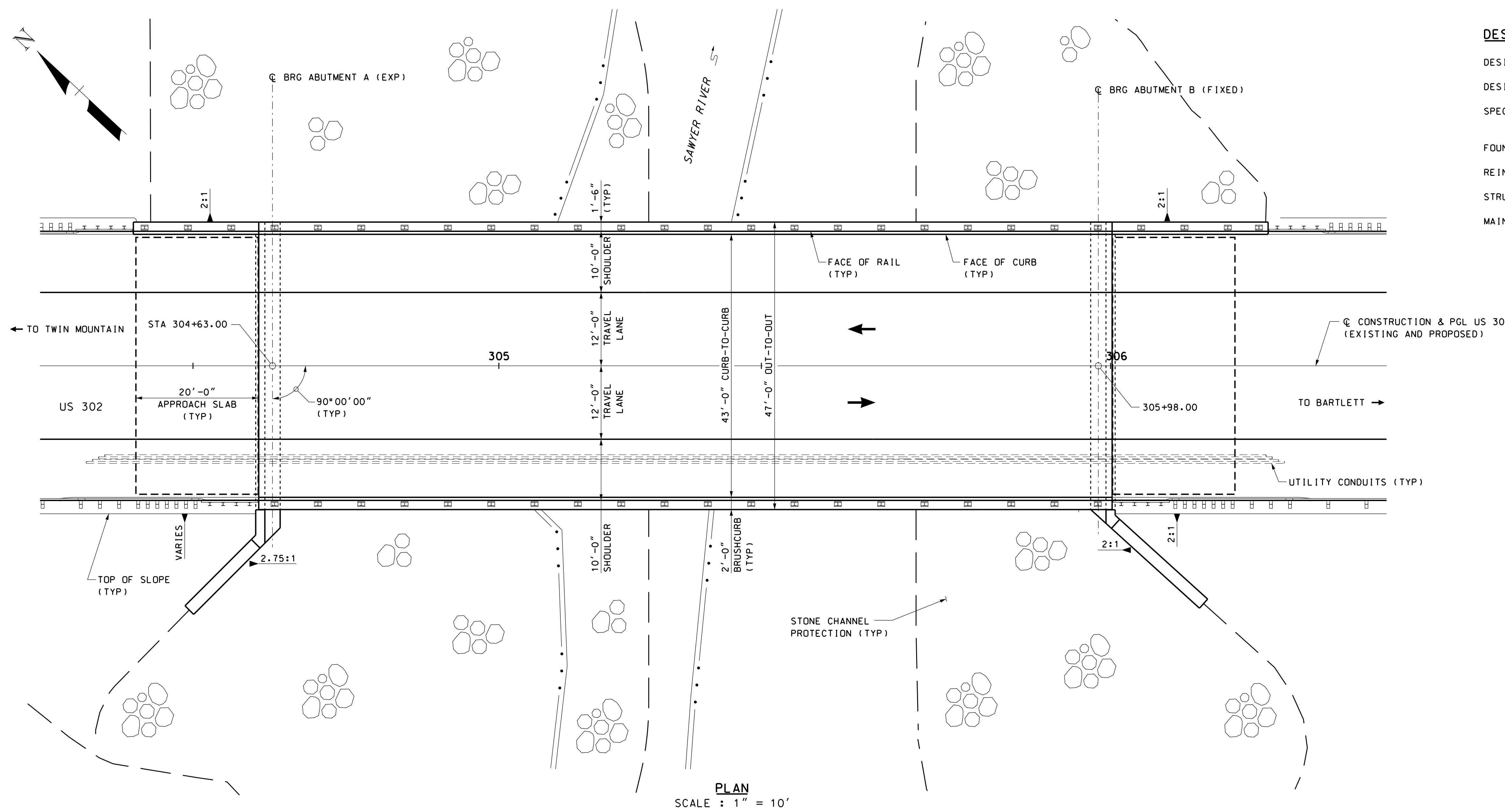


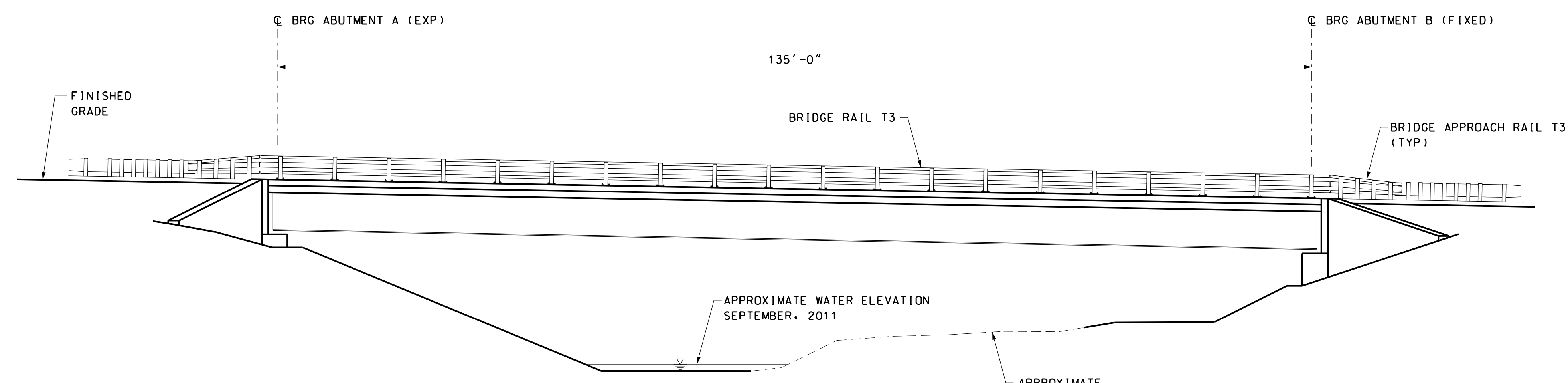
DESIGN LOADS, MATERIALS AND SPECIFICATIONS

DESIGN LOADING: HL-93
 DESIGN METHOD: LOAD AND RESISTANCE FACTOR DESIGN METHOD (LRFD)
 SPECIFICATIONS: AASHTO LRFD BRIDGE DESIGN SPECIFICATIONS, 2010
 NHDOT 2010 STANDARD SPECIFICATIONS AS AMENDED
 FOUNDATION DATA: CANTILEVER ABUTMENTS ON SPREAD FOOTINGS
 REINFORCING STEEL: AASHTO M31 (ASTM A615) GRADE 60, EPOXY COATED
 STRUCTURAL STEEL: AASHTO M270, GRADE 50W (ASTM A709, GRADE 50W)
 MAINTENANCE OF TRAFFIC: TRAFFIC CURRENTLY DETOURED ON TO TEMPORARY BRIDGE.



PLAN
SCALE : 1" = 10'

INDEX OF BRIDGE SHEETS	
BRIDGE SHEET NO.	DESCRIPTION
1	GENERAL PLAN AND ELEVATION
2	SITE PLAN AND PROFILE
3	TYPICAL BRIDGE SECTION

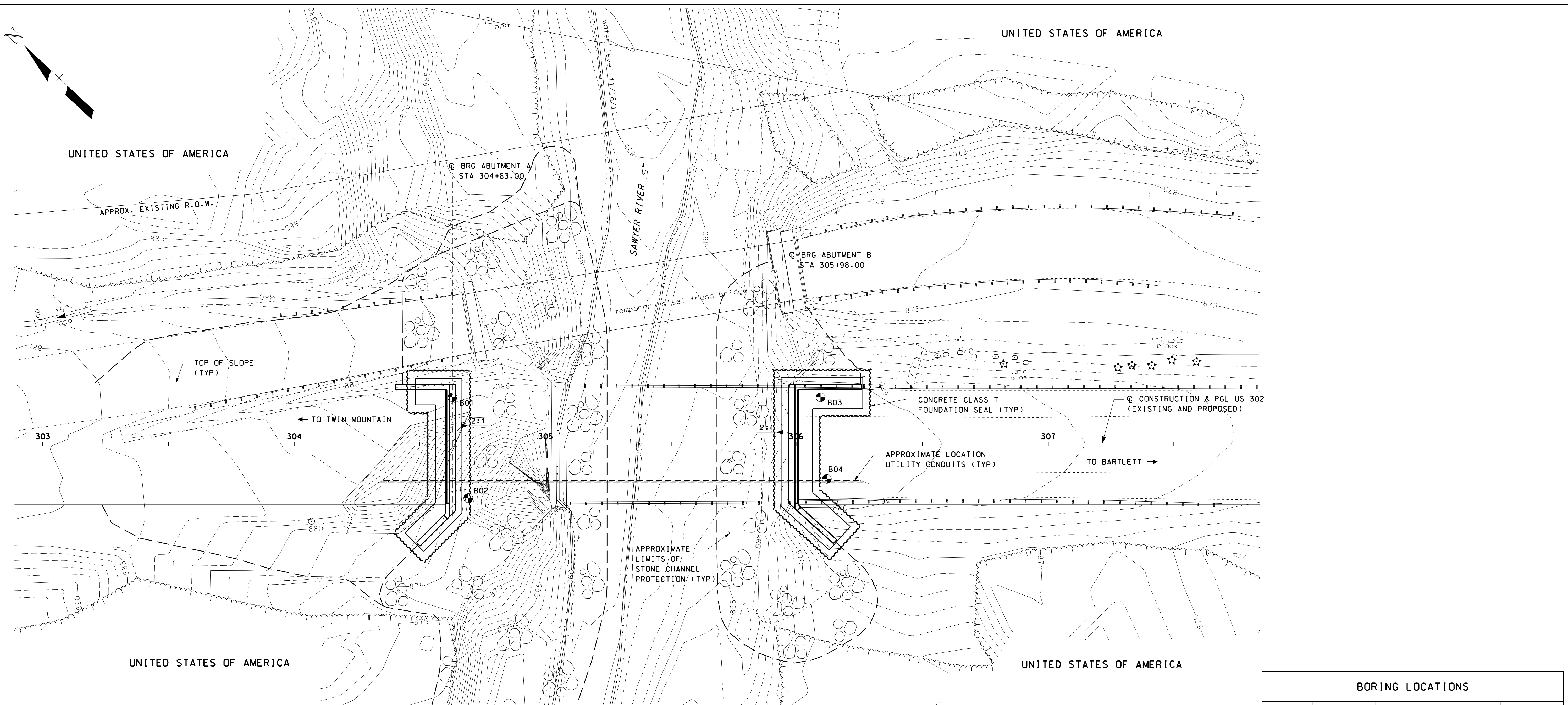
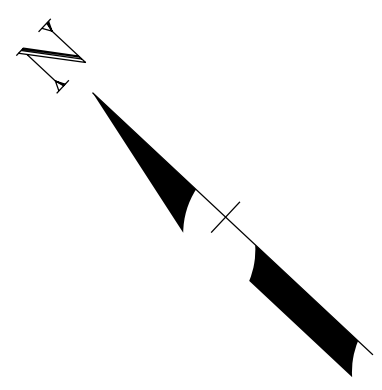


ELEVATION
SCALE : 1" = 10'

CONCEPTUAL PLANS
NOT FOR CONSTRUCTION

STATE OF NEW HAMPSHIRE						
DEPARTMENT OF TRANSPORTATION * BUREAU OF BRIDGE DESIGN						
TOWN	HARTS LOCATION	BRIDGE NO.	235/059	STATE PROJECT	16396A	
LOCATION US 302 OVER SAWYER RIVER						
GENERAL PLAN AND ELEVATION						
REVISIONS AFTER PROPOSAL			BY	DATE	BY	DATE
	DESIGNED	JCH	01/12	CHECKED	TTK	01/12
	DRAWN	PBD	01/12	CHECKED	JCH	01/12
	QUANTITIES			CHECKED		
	ISSUE DATE			FEDERAL PROJECT NO.	SHEET NO.	TOTAL SHEETS
	REV. DATE				1	5

16:24 26-JAN-2012 smerkwan
M:s17513:05 Sawyer River Br1.dgcsDrawingsP\anss16396GenP\an235_059.dgn



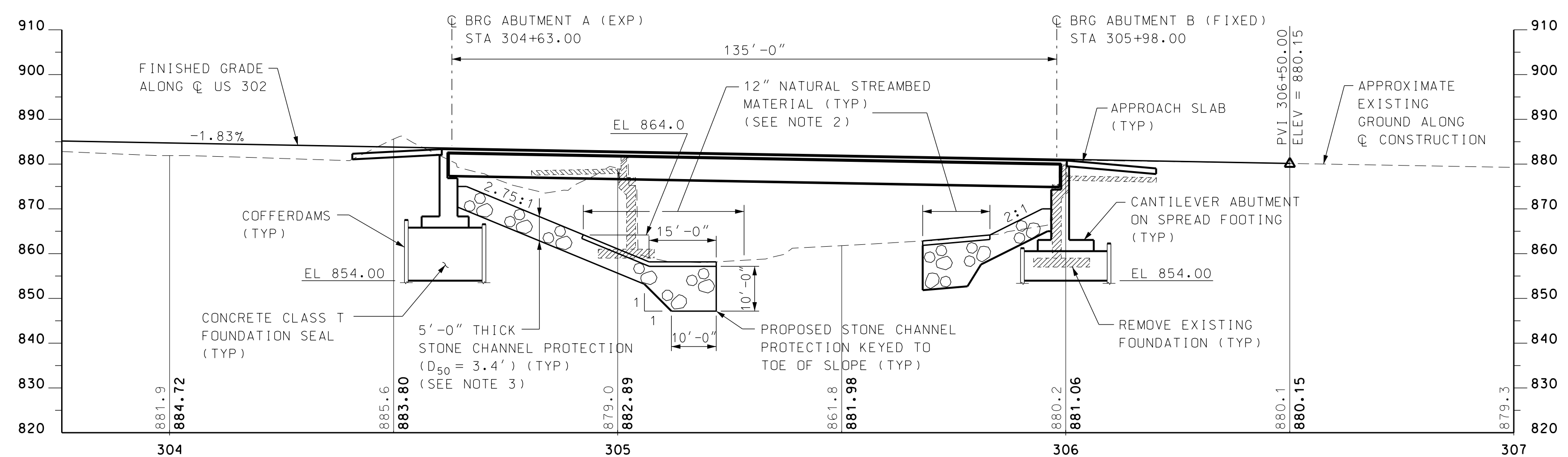
NOTE:
SEE ROADWAY PLANS FOR COMPLETE
LIMITS OF STONE CHANNEL PROTECTION

PLAN
SCALE: 1" = 20'

BORING LOCATIONS				
NUMBER	STATION	OFFSET	NORTHING	EASTING
B01	304+63	19' LT	577973	1067490
B02	304+69	22' RT	577941	1067465
B03	306+10	19' LT	577866	1067590
B04	306+12	14' RT	577842	1067568

NOTES

- FOUNDATION SYSTEM LAYOUT IS APPROXIMATE AND BASED ON PRELIMINARY DESIGN. FINAL FOUNDATION SYSTEM SHALL BE SUBMITTED TO THE ENGINEER FOR APPROVAL.
- THE CONTRACTOR SHALL COVER THE STONE CHANNEL PROTECTION WITH 12" OF STOCKPILED NATURAL STREAMBED MATERIAL WITHIN THE LIMITS SHOWN ON THE PLAN.
- THE LIMITS AND DETAILS OF STONE CHANNEL PROTECTION SHOWN ARE CONCEPTUAL. THE CONTRACTOR SHALL BE RESPONSIBLE FOR DEVELOPING THE FINAL SCOUR PROTECTION SYSTEM, INCLUDING BUT NOT LIMITED TO STONE GRADATION, PROPOSED SITE GRADING, AND FLANKING DETAILS AT THE UPSTREAM AND DOWNSTREAM LIMITS.

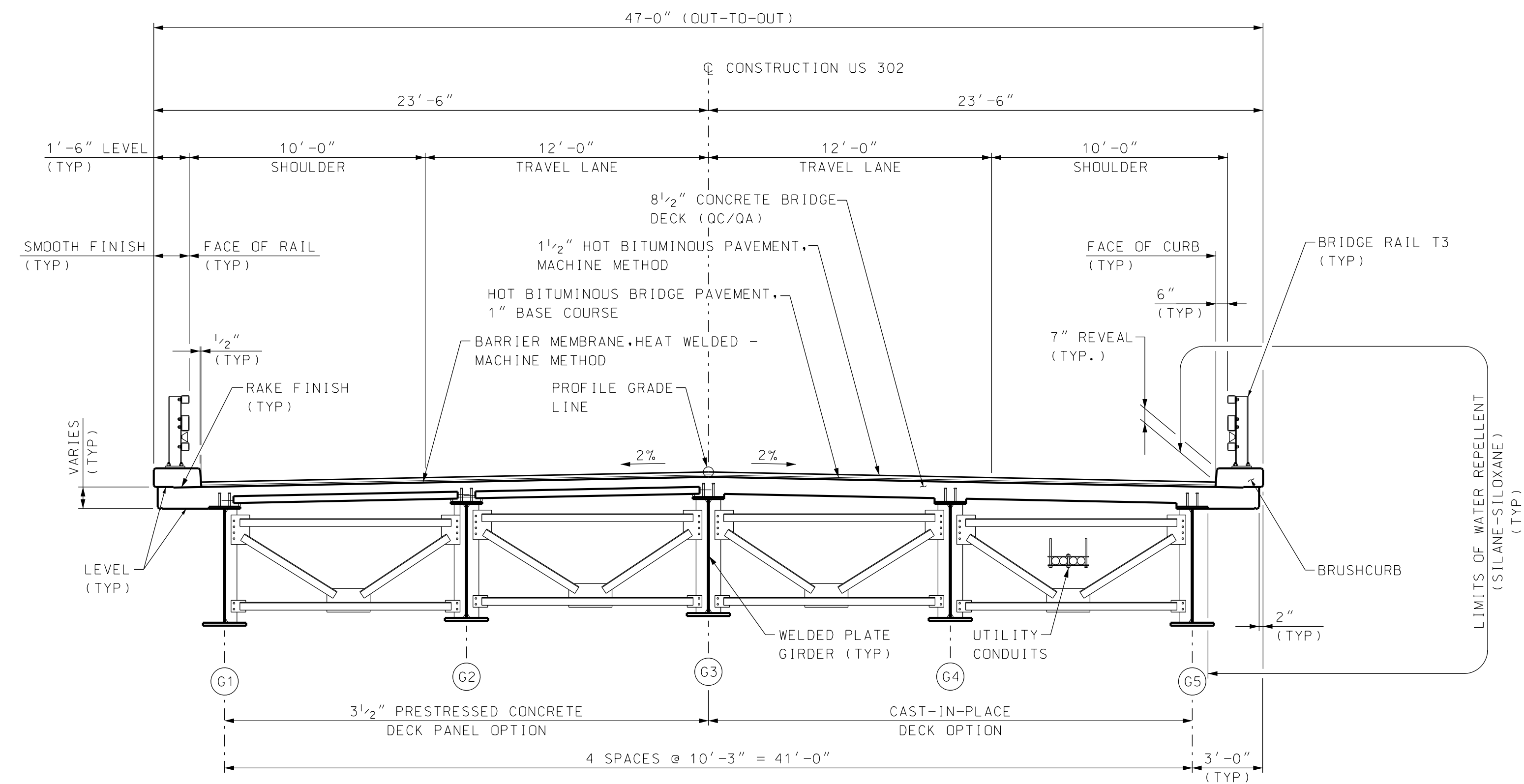


PROFILE - US 302
SCALE: 1" = 20'

LEGEND
 DENOTES EXISTING FOUNDATIONS TO BE REMOVED

STATE OF NEW HAMPSHIRE				
DEPARTMENT OF TRANSPORTATION * BUREAU OF BRIDGE DESIGN				
TOWN	HARTS LOCATION	BRIDGE NO.	235/059	STATE PROJECT
LOCATION		US 302 OVER SAWYER RIVER		
SITEPLAN AND PROFILE				BRIDGE SHEET
REVISIONS AFTER PROPOSAL				2 OF 3
DESIGNED	JCH	01/12	CHECKED	TTK 01/12
DRAWN	PBD	01/12	CHECKED	JCH 01/12
QUANTITIES			CHECKED	
ISSUE DATE	FEDERAL PROJECT NO.		SHEET NO.	TOTAL SHEETS
REV. DATE			2	5

16:24 26-JAN-2012 10:58:11 AM s:\projects\2012\12-16-2011\163965\163965.dwg
 M:\s\17513-05 Sawyer River BridgeDrawings\Plans\163965\163965.dwg
 16:24 26-JAN-2012 10:58:11 AM s:\projects\2012\12-16-2011\163965\163965.dwg
 M:\s\17513-05 Sawyer River BridgeDrawings\Plans\163965\163965.dwg



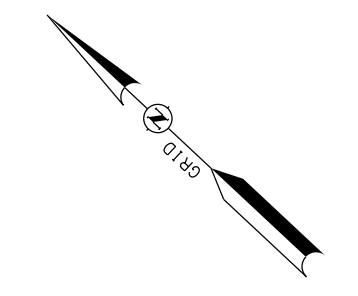
TYPICAL DECK SECTION
SCALE : 1/4" = 1'-0"

STATE OF NEW HAMPSHIRE									
DEPARTMENT OF TRANSPORTATION * BUREAU OF BRIDGE DESIGN									
TOWN HARTS LOCATION			BRIDGE NO. 235/059		STATE PROJECT 16396A			BRIDGE SHEET	
LOCATION US 302 OVER SAWYER RIVER									
TYPICAL DECK SECTION								3 OF 3	
REVISIONS AFTER PROPOSAL		BY	DATE	CHECKED	BY	DATE	FILE NUMBER		
		JCH	01/12	TTK	JCH	01/12			
		PBD	01/12	JCH					
QUANTITIES				CHECKED					
ISSUE DATE		FEDERAL PROJECT NO.			SHEET NO.		TOTAL SHEETS		
REV. DATE					3		5		

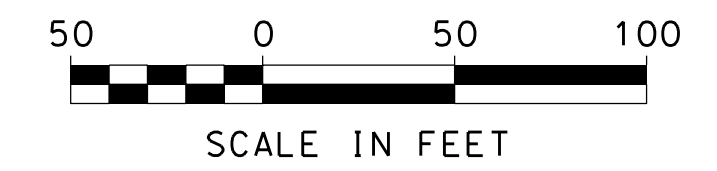
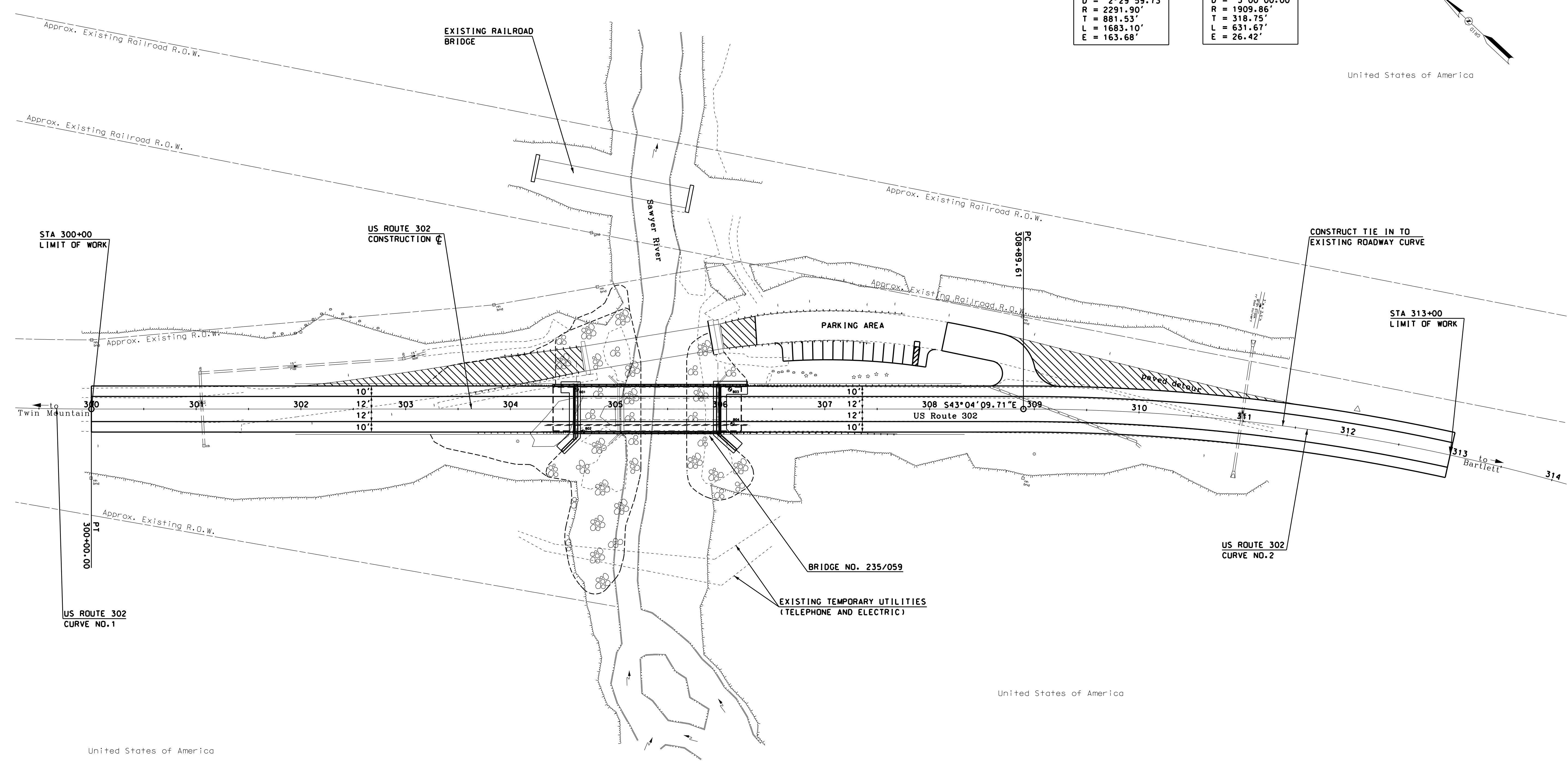
STATE	PROJ. NO.	SHEET NO.	TOTAL SHEETS
N.H.	16396-A	4	5

US ROUTE 302 CURVE #1
PI = 291+98.43 N = 578942.52 E = 1066558.32 Δ = 42°04'34.45" D = 2°29'59.73" R = 2291.90' T = 881.53' L = 1683.10' E = 163.68'

US ROUTE 302 CURVE #2
PI = 312+08.35 N = 577415.80 E = 1067985.47 Δ = 18°57'00.34" D = 3°00'00.00" R = 1909.86' T = 318.75' L = 631.67' E = 26.42'



EXISTING DETAIL	PROPOSED DESIGN	MAH
	SHEET CHECKED	BRC
DATE	DATE	01/12
	DATE	01/12
AS BUILT DETAILS	DATE	
	DATE	
BOOK	BOOK	
	BOOK	
PAGE	PAGE	
	PAGE	
NOTEBOOKS	NOTEBOOKS	
	NOTEBOOKS	
NUMBER	NUMBER	
	NUMBER	
DATE	DATE	
	DATE	
STATION	STATION	
	STATION	
DESCRIPTION	DESCRIPTION	
	DESCRIPTION	



STATE OF NEW HAMPSHIRE			
DEPARTMENT OF TRANSPORTATION		BUREAU OF HIGHWAY DESIGN	
GENERAL PLAN 01			
FEDERAL PROJECT NO.	STATE PROJECT NO.	SHEET NO.	TOTAL SHEETS
	16396-A	4	5

STATE	PROJ. NO.	SHEET NO.	TOTAL SHEETS
N.H.	16396-A		

REVISIONS AFTER PROPOSAL		STATION	DESCRIPTION
NUMBER	DATE	STATION	DESCRIPTION

NOTEBOOKS		PAGE	PAGE
BOOK	BOOK	PAGE	PAGE

EXISTING DETAIL		DATE	DATE
PROPOSED DESIGN	MAH	DATE	01/12
SHEET CHECKED	BRC	DATE	01/12
AS BUILT DETAILS		DATE	



STATE OF NEW HAMPSHIRE			
DEPARTMENT OF TRANSPORTATION		BUREAU OF HIGHWAY DESIGN	
FEDERAL PROJECT NO.	STATE PROJECT NO.	SHEET NO.	TOTAL SHEETS
	16396-A		

SCALE:
 1" = 50' HORIZ.
 1" = 10' VERT.