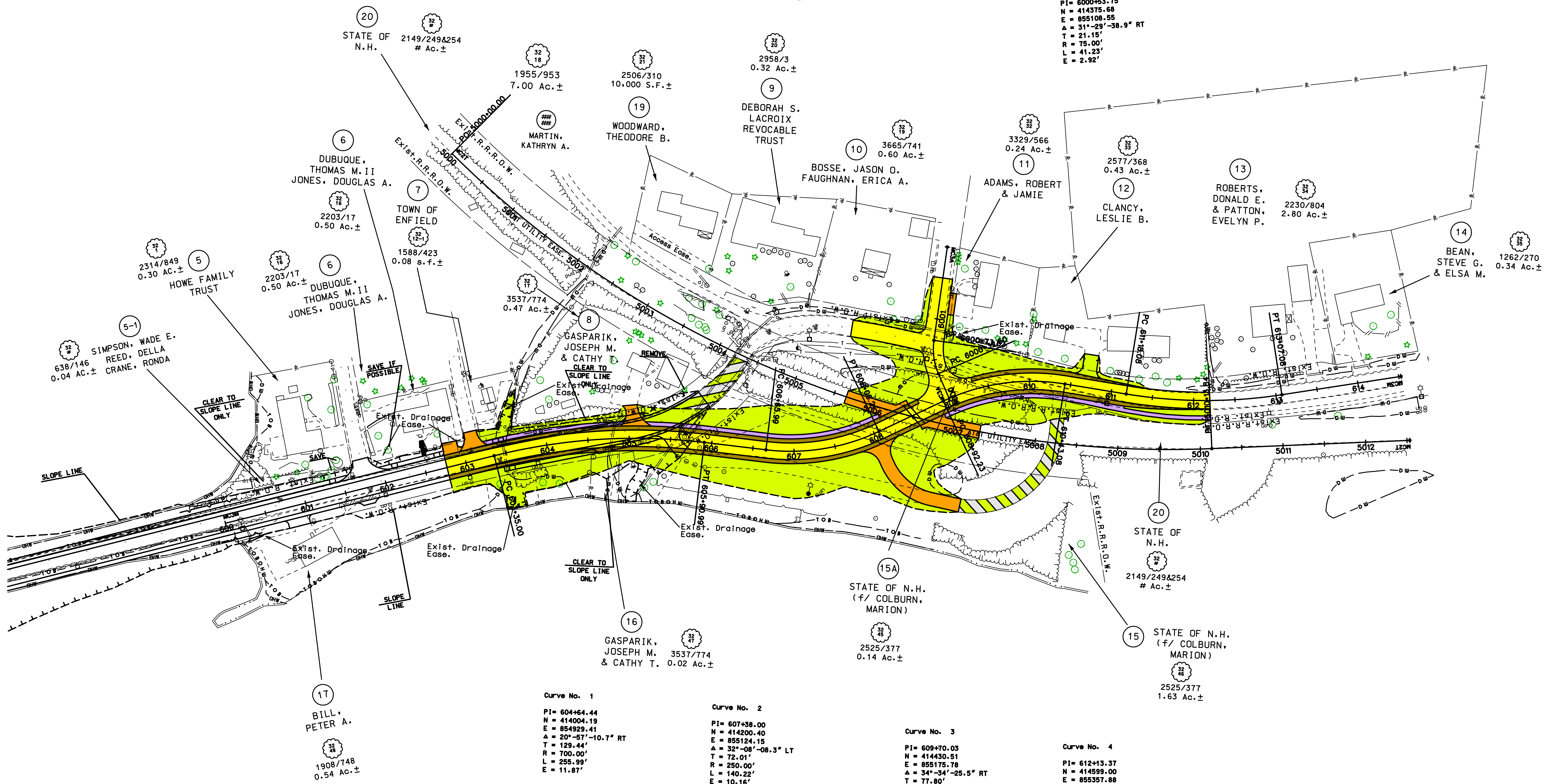


Curve No. 1

PI= 5005+37.73
N = 414137.81
E = 855091.09
Δ = 47°-14'-07.5" LT
T = 537.73'
R = 1229.77'
L = 1013.84'
E = 112.42'

Curve No. 1

PI= 6000+53.75
N = 414375.68
E = 855108.55
Δ = 31°-29'-38.9" RT
T = 21.15'
R = 75.00'
L = 41.23'
E = 2.92'



Curve No. 1

PI= 604+64.44
N = 414004.19
E = 854929.41
Δ = 20°-57'-10.7" RT
T = 129.44'
R = 700.00'
L = 255.99'
E = 11.87'

Curve No. 2

PI= 607+38.00
N = 414200.40
E = 855124.15
Δ = 32°-08'-08.3" LT
T = 72.01'
R = 250.00'
L = 140.22'
E = 10.16'

Curve No. 3

PI= 609+70.03
N = 414430.51
E = 855175.78
Δ = 34°-34'-25.5" RT
T = 77.80'
R = 250.00'
L = 150.86'
E = 11.83'

Curve No. 4

PI= 612+13.37
N = 414599.00
E = 855357.88
Δ = 18°-02'-51.3" LT
T = 95.29'
R = 600.00'
L = 188.99'
E = 7.52'