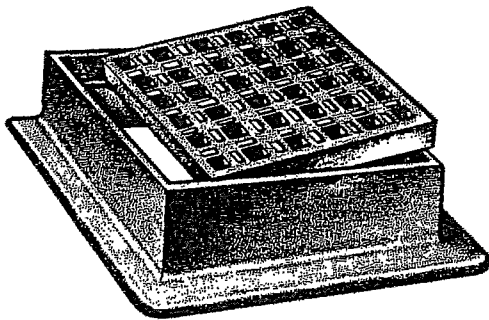


Manhole Castings L-13

800-EJP-24 HR

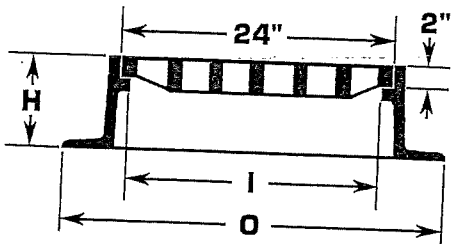
Maine, Mass & Vermont Catch Basin



Heavy Duty Catch Basin with 2" Square Openings

SPECIFICATIONS:

- Nonrocking grate
- 2" square opening pattern on grate
- Gray cast iron meets ASTM A48 Class 30
- H-20 load rated
- Frame available in 4", 6" and 8" heights, with 3 or 4 flanges

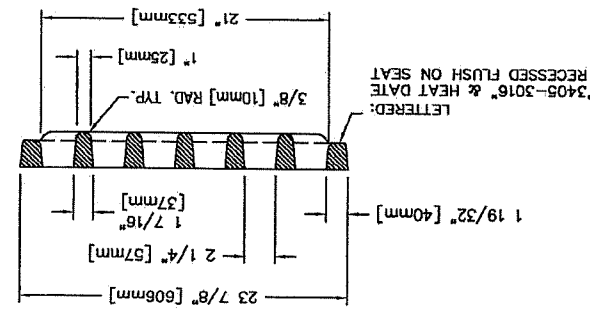
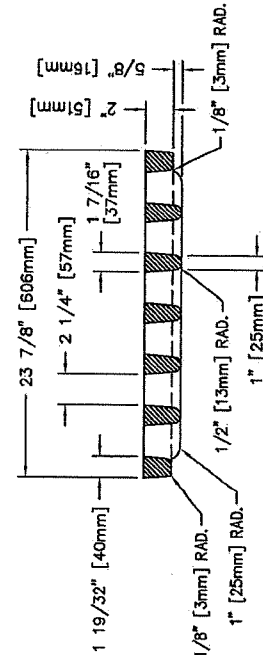
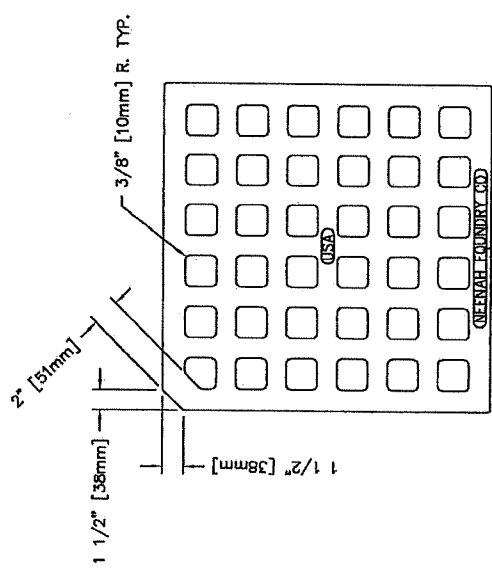


DESCRIPTION	PRODUCT NUMBER
	LeBARON
24" x 24" CB Frame 3 Flg. LE244	65172
24" x 24" CB Frame 4 Flg. LE244	NS
24" x 6" CB Frame 3 Flg. LE246	65175
24" x 6" CB Frame 4 Flg. LE246	65177
24" x 8" CB Frame 3 Flg. LE248-2	NS
24" x 8" CB Frame 4 Flg. LE248-2	65184
24" CB Grate E24SG1	65183

CASTING	DIMENSIONS (inches)			
	H	I	O	
			3 FLG.	4 FLG.
LE244	4	22	29 x 32	32 x 32
LE246	6	22	29 1/2 x 33	33 x 33
LE248-2	8	22	30 x 33 1/2	33 1/2 x 33 1/2

Weights:

	3 Flange	4 Flange
Frame-4"	205 lbs.	235 lbs.
Grate	185 lbs.	185 lbs.
Total	390 lbs.	420 lbs.
Frame-6"	200 lbs.	215 lbs.
Grate	185 lbs.	185 lbs.
Total	385 lbs.	400 lbs.
Frame-8"	265 lbs.	295 lbs.
Grate	185 lbs.	185 lbs.
Total	450 lbs.	480 lbs.

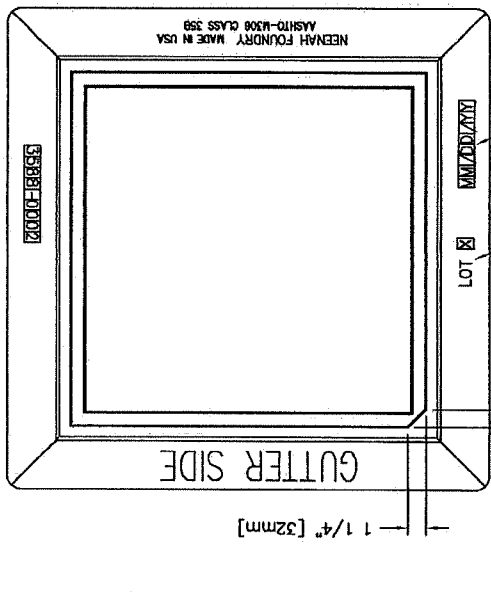


NOTE: ALL DIMENSIONS SHOWN ARE IN ENGLISH AND [METRIC]
TEST BARS REQUIRED
FREE OPEN AREA: 1.2 SQ. FT.
MATERIAL: CAST GRAY IRON ASTM A-48, CLASS 35B
FINISH: NO PAINT
WEIGHT: 210#

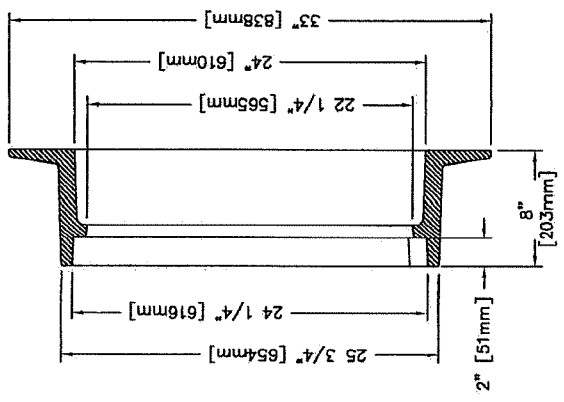
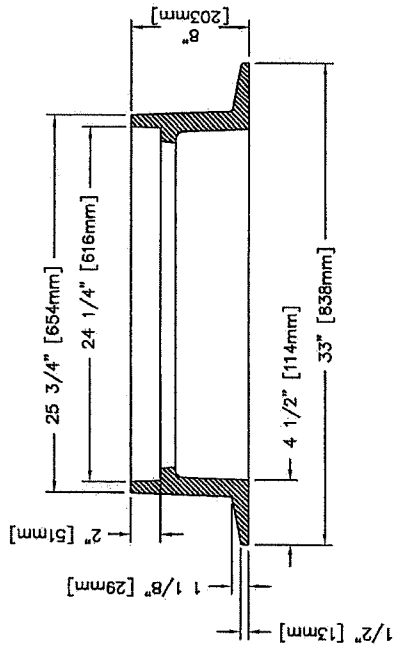
DR.	KMH	SCALE	1/8"=1"	TITLE	R-3405-A
CH.					TYPE "A" GRATE
APP.					
DATE	06-05-2002				

NEENAH FOUNDRY COMPANY
NEENAH WISCONSIN 54956

34053016 B



DATE OF MANUFACTURE IN THE FORM OF MM/DD/YY



NOTE: ALL DIMENSIONS ARE SHOWN IN ENGLISH AND [METRIC].
 MASS DOT TYPE 5 TEST BARS REQUIRED.
 MATERIAL: CAST GRAY IRON ASTM A-48, CLASS 35B
 FINISH: NOT PAINTED
 WEIGHT: 273#

DR.	CSK	SCALE	TITLE
CH.		1/8" = 1"	R-3588
APP.			FRAME MASS DOT
DATE	8-25-97		
12-35-001 / ADD LETTERING REQUIREMENTS		NEENAH FOUNDRY COMPANY	
DATE		NF-35880002 B	