

ITEM 677.41001 (FOR ESTIMATING PURPOSES ONLY - NOT A FINAL DESIGN)

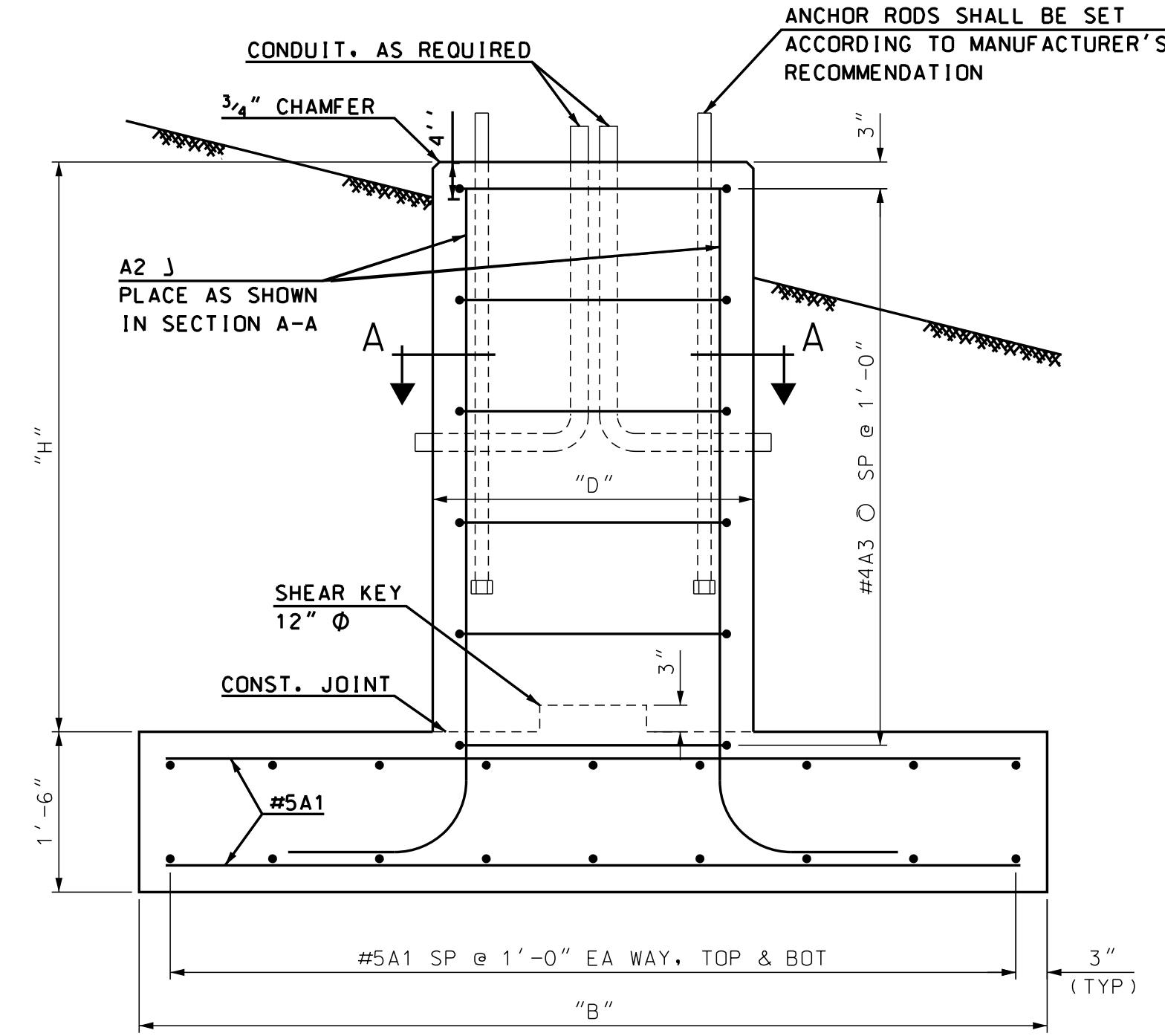
QUANTITIES

ITEM NO.*	ITEM DESCRIPTION	UNIT	QUANTITY
206.1	COMMON STRUCTURE EXCAVATION	CY	70
508.	STRUCTURAL FILL (1' DEPTH ONLY)	CY	9
520.213	CONCRETE CLASS B, FOOTINGS (ON SOIL)	CY	16.1
534.3	WATER REPELLENT (SILANE-SILOXANE)	GAL	1
544.	REINFORCING STEEL	LB	1814

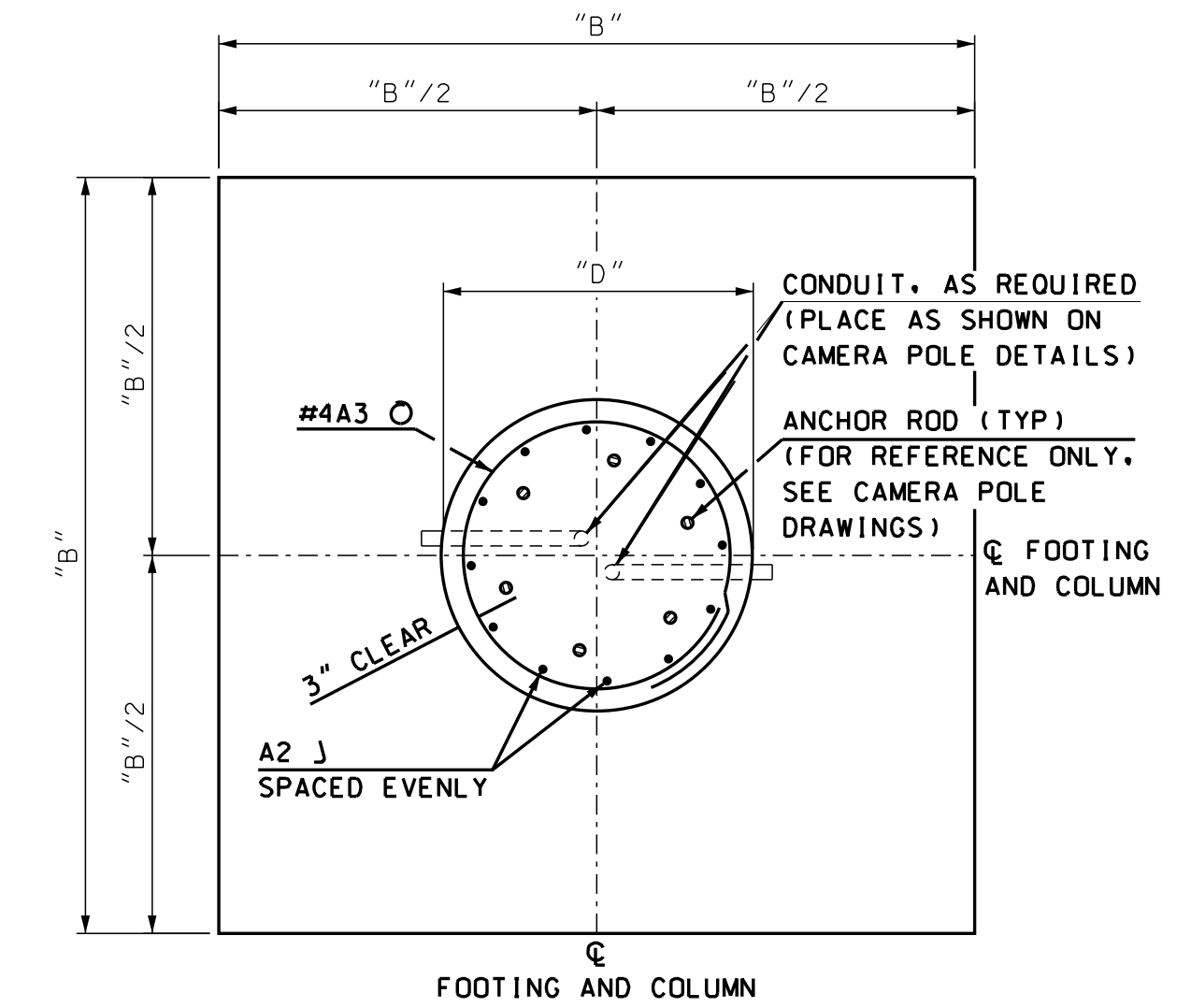
\* ITEM NUMBERS ARE FOR SPECIFICATION REFERENCE ONLY.  
NO SEPARATE PAYMENT WILL BE MADE FOR THESE ITEMS,  
EXCEPT AS NOTED IN GENERAL NOTE #4.

GENERAL NOTES

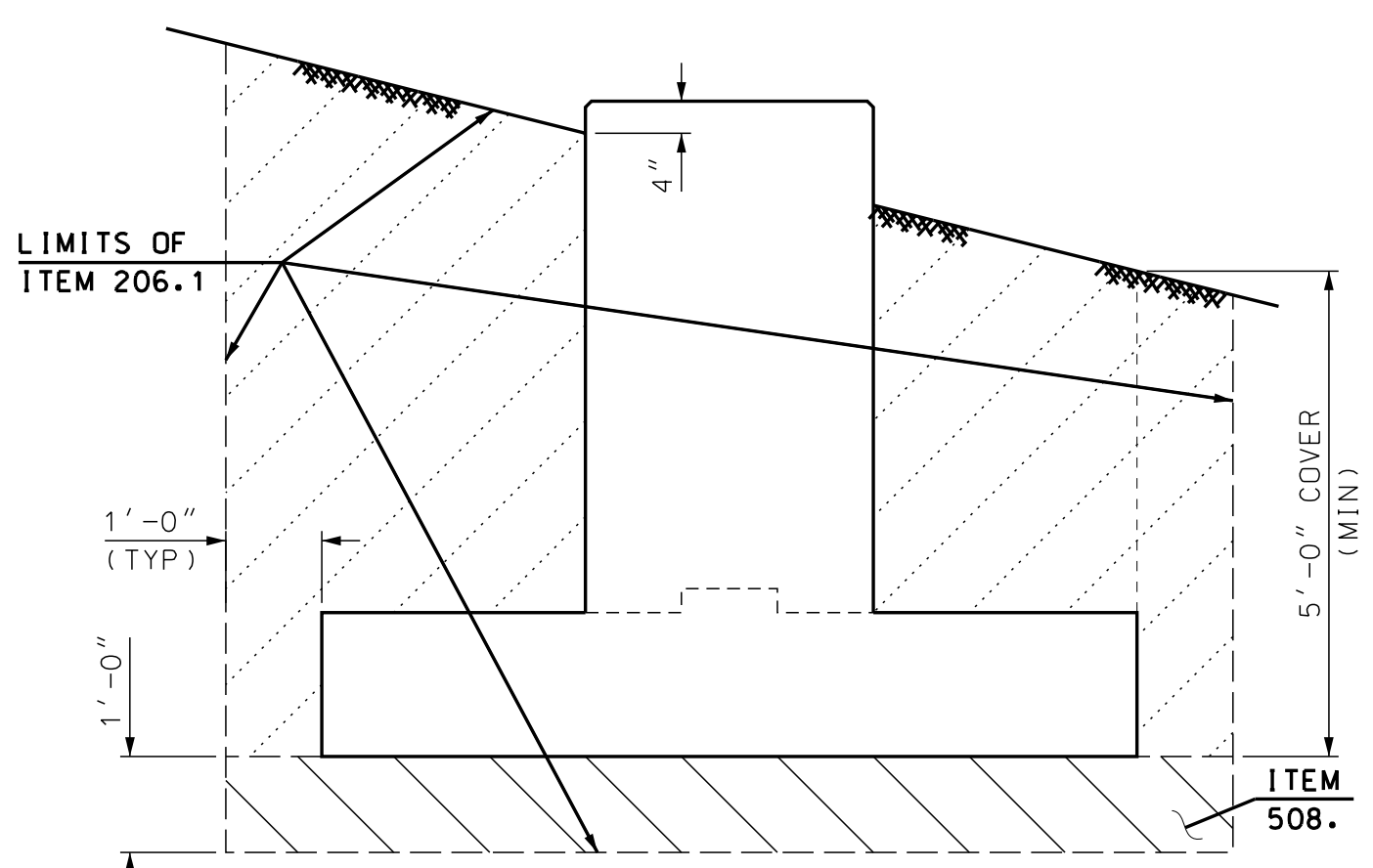
- THE FOUNDATION DESIGN IS PRELIMINARY AND IS BASED ON ESTIMATED POLE LOADS AS CALCULATED PER THE SPECIFICATIONS LISTED IN NOTE 12, BELOW. THE CONTRACTOR SHALL SUBMIT THE POLE DESIGN WITH LRFD DESIGN LOADS IN ACCORDANCE WITH THE SPECIAL PROVISIONS FOR ITEMS 677.4101 AND 677.41001. WHEN THE DESIGN LOADS ARE RECEIVED, NHDDOT WILL VERIFY OR MODIFY THE PRELIMINARY FOUNDATION DESIGN FOR FINAL DESIGN IN ACCORDANCE WITH THE AASHTO LRFD BRIDGE DESIGN SPECIFICATIONS, 7TH ED. (2014) AS AMENDED.
- THE SPREAD FOOTING FOUNDATION SHALL BE CONSTRUCTED IN AN EXCAVATED HOLE IN ACCORDANCE WITH THE SPECIAL PROVISIONS FOR ITEMS 677.4101 AND 677.41001, AND THE CONTRACT PLANS. ALL WORK AND MATERIALS SHALL BE PAID UNDER ITEM 677.41001, CCTV FOUNDATION, EXCEPT AS NOTED IN NOTE #4. ALL WORK AND MATERIALS SHALL COMPLY WITH THE SPECIFICATIONS FOR THE APPLICABLE ITEMS.
- BEARING RESISTANCE IS BASED ON LOAD AND RESISTANCE FACTOR DESIGN (LRFD). THE NOMINAL BEARING RESISTANCE IS 7.5 TONS/SF WITH A RESISTANCE FACTOR OF 0.45.
- FOOTING CONCRETE SHALL BE PLACED ON A 1'-0" LAYER OF STRUCTURAL FILL AS SHOWN ON THE PLANS, SUBSIDIARY TO ITEM 677.41001. UNSUITABLE MATERIAL FOUND AT A DEPTH GREATER THAN 1'-0" BELOW THE PROPOSED BOTTOM OF FOOTING ELEVATION SHALL BE REMOVED AND REPLACED WITH STRUCTURAL FILL AS DIRECTED BY THE ENGINEER, PAID UNDER ITEMS 206.1 AND 508. ALL STRUCTURAL FILL SHALL BE PLACED IN ACCORDANCE WITH SECTION 508.
- THE COLUMN SHALL HAVE AN EXPOSED LENGTH NO GREATER THAN 4 INCHES MEASURED ON THE HIGH GROUND SIDE OF THE SHAFT, AND THE SPREAD FOOTING SHALL HAVE A MINIMUM EMBEDMENT DEPTH OF 5'-0".
- CAST-IN-PLACE CONCRETE SHALL BE IN ACCORDANCE WITH ITEM 677.41001 SPECIAL PROVISION. THE CONTRACTOR SHALL COORDINATE WITH THE ENGINEER FOR VISUAL INSPECTION OF THE EXCAVATION, INCLUDING THE ARRANGEMENT OF THE REINFORCING BARS AND ANCHOR BOLTS, PRIOR TO CONCRETE PLACEMENT.
- COAT ALL SURFACES OF THE CONCRETE COLUMN TO 1'-0" BELOW FINISHED GRADE WITH WATER REPELLENT (SILANE-SILOXANE) IN ACCORDANCE WITH SECTION 534.
- TRENCHES FOR THE CONDUITS SHALL BE HAND DUG NEAR THE PROPOSED FOUNDATION, DISTURBING AS LITTLE SOIL AS POSSIBLE IN PLACING OF THE CONDUITS (APPROXIMATELY 2.5 FT MAXIMUM DOWN FROM THE GROUND SURFACE). THE RESULTING TRENCHES SHALL BE BACKFILLED WITH STRUCTURAL FILL CONFORMING TO SECTION 508.
- ALL REINFORCING STEEL SHALL CONFORM TO AASHTO M31/M31M, GRADE 60 (420). ALL REINFORCING STEEL SHALL HAVE A MINIMUM CLEAR COVER OF 3".
- THE EXPOSED LENGTH OF THE ANCHOR ROD BETWEEN THE TOP OF THE FOUNDATION AND THE BOTTOM OF THE LEVELING NUT SHOULD NOT EXCEED ONE ROD DIAMETER (MAXIMUM) OR 1-INCH (PREFERRED).
- THE SCREEN SHALL BE STAINLESS STEEL STD. GR. WIRE CLOTH, 1/4" MAX OPENING WITH MIN. WIRE DIA. OF AWG NO. 16 WITH 2" LAP. SECURE WITH 3/4" STAINLESS STEEL BANDING AFTER ANCHOR RODS ARE FULLY TIGHTENED AND TESTED. NO GROUT SHALL BE PLACED BETWEEN FOUNDATION AND BOTTOM OF BASE PLATE.
- SPECIFICATIONS: AASHTO LRFD SPECIFICATIONS FOR STRUCTURAL SUPPORTS FOR HIGHWAY SIGNS, LUMINAIRES, AND TRAFFIC SIGNALS, 1ST ED. (2015) AS AMENDED; AASHTO LRFD BRIDGE DESIGN SPECIFICATIONS, 7TH ED. (2014) AS AMENDED; NHDDOT 2016 STANDARD SPECIFICATIONS AS AMENDED; AND THE SPECIAL PROVISIONS FOR ITEMS 677.4101 AND 677.41001.



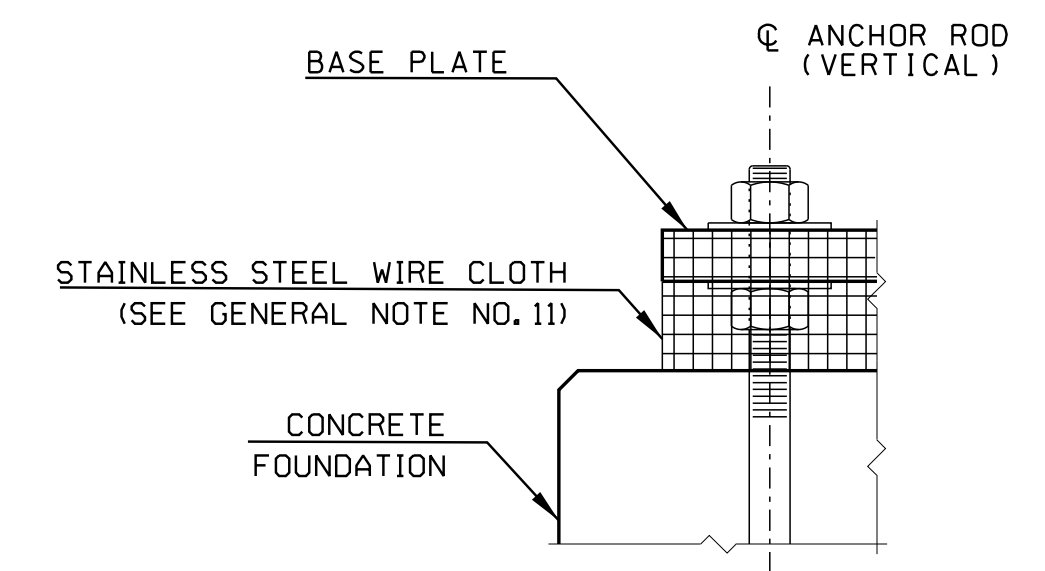
MASONRY AND REINFORCING ELEVATION  
NOT TO SCALE



SECTION A-A  
NOT TO SCALE



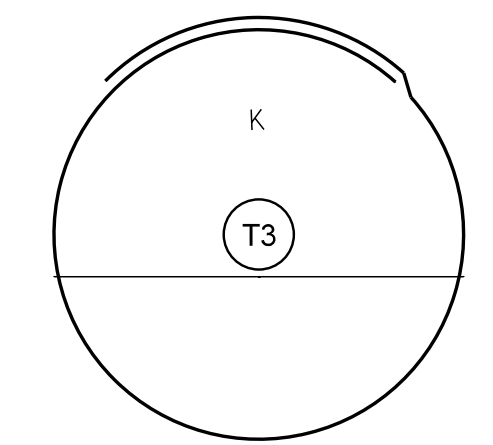
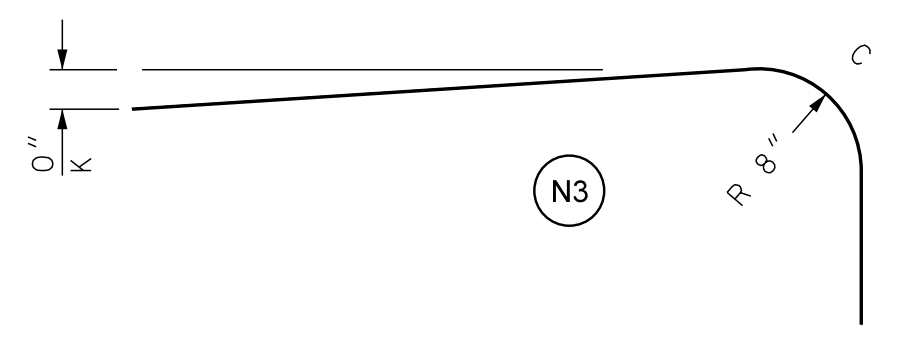
EARTHWORK ELEVATION  
NOT TO SCALE



SCREEN DETAIL  
NOT TO SCALE

REINFORCING SCHEDULE

MARK	TYPE	BAR #	NO. OF BARS	UNBENT LENGTH
A1	—	#7	56	13'-0"
A2	N3	#7	16	8'-3"
A3	T3	#4	7	12'-0"



SDR PROCESSED XX  
 NEW DESIGN XX  
 SHEET CHECKED XX  
 AS BUILT DETAILS  
 REVISIONS AFTER PROPOSAL  
 STATION  
 STATION  
 DATE  
 NUMBER  
 DATE  
 DATE  
 DATE  
 DATE

STATE OF NEW HAMPSHIRE			
DEPARTMENT OF TRANSPORTATION • BUREAU OF HIGHWAY DESIGN			
<b>CCTV FOUNDATION ITEM 677.41001</b>			
DGN	STATE PROJECT NO.	SHEET NO.	TOTAL SHEETS
\$FILENAME\$	\$SHNO\$	\$PSETNO\$	\$PSETTOT\$