

REVISIONS AFTER PROPOSAL

STATION

STATION

DATE

NUMBER

DATE XX XX

SDR PROCESSED XX

DATE XX XX

DATE XX XX

NEW DESIGN XX

DATE XX XX

SHEET CHECKED XX

AS BUILT DETAILS

**QUANTITIES**

ITEM NO.*	ITEM DESCRIPTION	UNIT	QUANTITY (BY SHAFT Ø)		
			3'-6"	4'-0"	4'-6"
520.1**	CONCRETE CLASS A	CY/FT	0.36	0.47	0.59
534.3	WATER REPELLENT (SILANE-SILOXANE)	GAL	1	1	1
544.**	REINFORCING STEEL	LB/FT	31.1	39.3	47.5

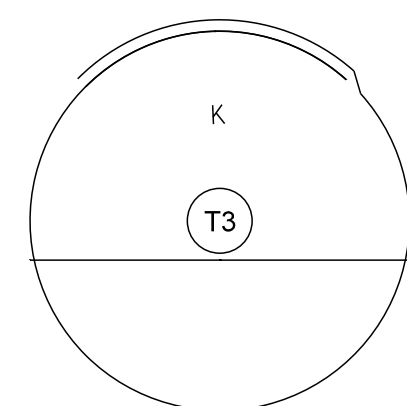
\* ITEM NUMBERS ARE FOR SPECIFICATION REFERENCE ONLY. NO SEPARATE PAYMENT WILL BE MADE FOR THESE ITEMS.  
 \*\* ITEM QUANTITY IS PER FOOT LENGTH OF DRILLED SHAFT.

**GENERAL NOTES**

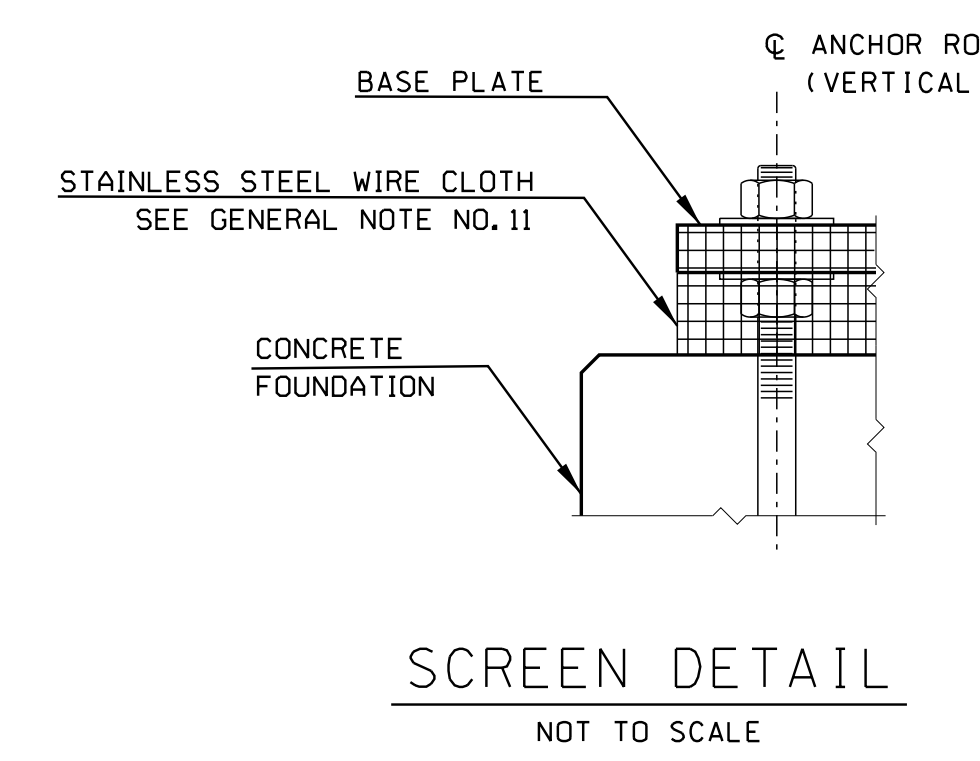
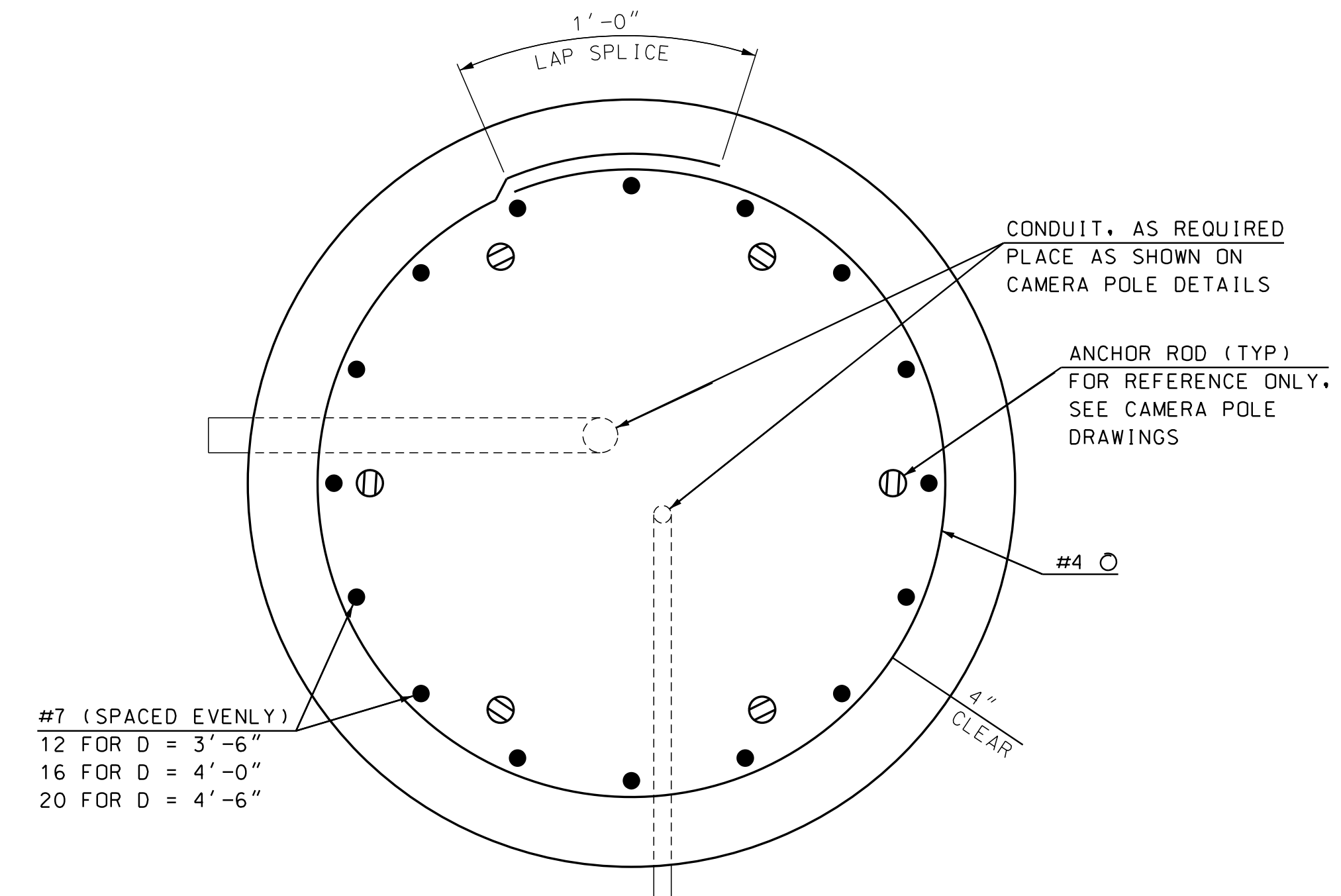
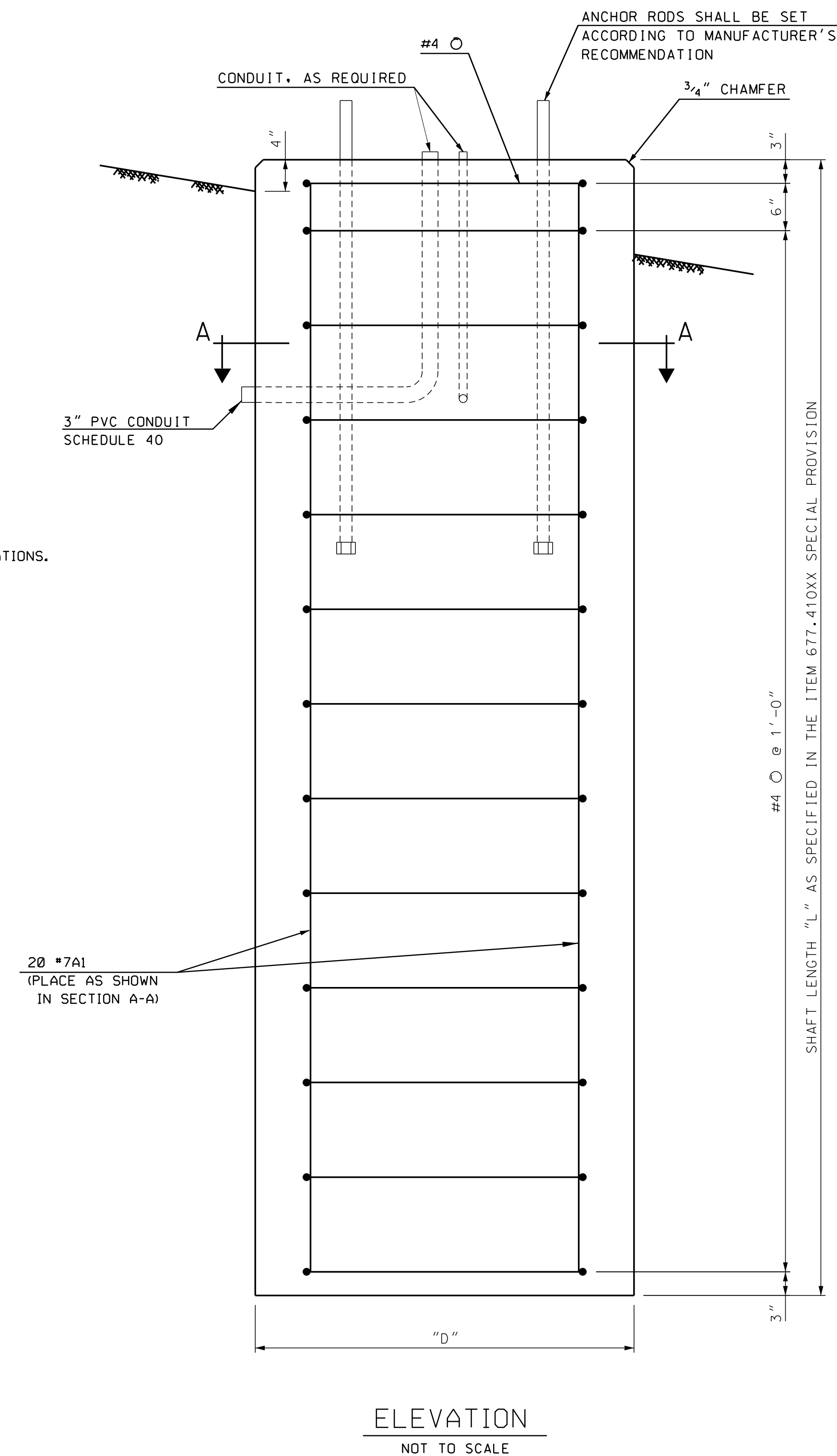
- THE FOUNDATION DESIGN IS PRELIMINARY AND IS BASED ON ESTIMATED POLE LOADS AS CALCULATED PER THE SPECIFICATIONS LISTED IN NOTE 12, BELOW. THE CONTRACTOR SHALL SUBMIT THE POLE DESIGN WITH LRFD DESIGN LOADS IN ACCORDANCE WITH THE SPECIAL PROVISIONS FOR ITEMS 677.4101 AND 677.41001. WHEN THE DESIGN LOADS ARE RECEIVED, NHDOT WILL VERIFY OR MODIFY THE PRELIMINARY FOUNDATION DESIGN FOR FINAL DESIGN IN ACCORDANCE WITH THE AASHTO LRFD BRIDGE DESIGN SPECIFICATIONS, 7TH ED. (2014) AS AMENDED.
- THE CIRCULAR SHAFT FOUNDATION SHALL BE CONSTRUCTED IN A DRILLED HOLE IN ACCORDANCE WITH THE SPECIAL PROVISIONS FOR ITEMS 677.4101 AND 677.41001, AND THE CONTRACT PLANS. ALL WORK AND MATERIALS SHALL BE PAID UNDER ITEM 677.41001, CCTV FOUNDATION, AND SHALL COMPLY WITH THE SPECIFICATIONS FOR THE FOLLOWING ITEMS, AS APPLICABLE:
  - ITEM 520.1, CONCRETE CLASS A
  - ITEM 534.3, WATER REPELLENT (SILANE-SILOXANE)
  - ITEM 544, REINFORCING STEEL
- WHERE FILL EMBANKMENT IS TO BE CONSTRUCTED ABOVE THE EXISTING GROUND, THE EMBANKMENT SHALL BE BUILT PRIOR TO CONSTRUCTING THE SHAFTS. PLACEMENT AND COMPACTION OF THE FILL SHALL BE IN ACCORDANCE WITH SECTION 203 OF THE STANDARD SPECIFICATIONS.
- WHERE BEDROCK IS ENCOUNTERED WITHIN THE SPECIFIED SHAFT LENGTH, THE SHAFT SHALL EXTEND A MINIMUM OF 4 FEET INTO SOUND BEDROCK. IT IS NOT NECESSARY TO EXTEND THE SHAFT IN BEDROCK BEYOND THE SPECIFIED SOIL-BASED LENGTH GIVEN ON THIS PLAN.
- THE FOUNDATION SHALL HAVE AN EXPOSED LENGTH NO GREATER THAN 4 INCHES MEASURED ON THE HIGH GROUND SIDE OF THE SHAFT.
- CAST-IN-PLACE CONCRETE SHALL BE IN ACCORDANCE WITH ITEM 677.41001 SPECIAL PROVISION. THE CONTRACTOR SHALL COORDINATE WITH THE ENGINEER FOR VISUAL INSPECTION OF THE REINFORCING BARS AND ANCHOR BOLTS PRIOR TO CONCRETE PLACEMENT.
- COAT ALL SURFACES OF THE DRILLED SHAFT TO 1'-0" BELOW FINISHED GRADE WITH WATER REPELLENT (SILANE-SILOXANE) IN ACCORDANCE WITH SECTION 534.
- TRENCHES FOR THE CONDUITS SHALL BE HAND DUG NEAR THE PROPOSED FOUNDATION, DISTURBING AS LITTLE SOIL AS POSSIBLE IN PLACING OF THE CONDUITS (APPROXIMATELY 2.5 FT MAXIMUM DOWN FROM THE GROUND SURFACE). THE RESULTING TRENCHES SHALL BE BACKFILLED WITH STRUCTURAL FILL CONFORMING TO SECTION 508.
- ALL REINFORCING STEEL SHALL CONFORM TO AASHTO M31/M31M, GRADE 60 (420), AND SHALL HAVE CLEAR COVER AS NOTED ON DETAILS.
- THE EXPOSED LENGTH OF THE ANCHOR ROD BETWEEN THE TOP OF THE FOUNDATION AND THE BOTTOM OF THE LEVELING NUT SHOULD NOT EXCEED ONE ROD DIAMETER (MAXIMUM) OR 1-INCH (PREFERRED).
- THE SCREEN SHALL BE STAINLESS STEEL STD. GR. WIRE CLOTH, 1/4" MAX OPENING WITH MIN. WIRE DIA. OF AWG NO. 16 WITH 2" LAP. SECURE WITH 3/4" STAINLESS STEEL BANDING AFTER ANCHOR RODS ARE FULLY TIGHTENED AND TESTED. NO GROUT SHALL BE PLACED BETWEEN FOUNDATION AND BOTTOM OF BASE PLATE.
- SPECIFICATIONS: AASHTO LRFD SPECIFICATIONS FOR STRUCTURAL SUPPORTS FOR HIGHWAY SIGNS, LUMINAIRES, AND TRAFFIC SIGNALS, 1ST ED. (2015) AS AMENDED; AASHTO LRFD BRIDGE DESIGN SPECIFICATIONS, 7TH ED. (2014) AS AMENDED; NHDOT 2016 STANDARD SPECIFICATIONS AS AMENDED; AND THE SPECIAL PROVISIONS FOR ITEMS 677.4101 AND 677.41001.

**REINFORCING SCHEDULE**

MARK	TYPE	BAR #	NO. OF BARS	UNBENT LENGTH
A1	—	#7	20	12'-6"
A2	T3	#4	14	13'-1"



**ITEM 677.41001 (FOR ESTIMATING PURPOSES ONLY - NOT A FINAL DESIGN)**



STATE OF NEW HAMPSHIRE			
DEPARTMENT OF TRANSPORTATION • BUREAU OF HIGHWAY DESIGN			
<b>CCTV FOUNDATION ITEM 677.41001 DRILLED SHAFT</b>			
DGN	STATE PROJECT NO.	SHEET NO.	TOTAL SHEETS
\$FILENAME\$	\$STNO\$	\$PSETNO\$	\$PSETTOT\$