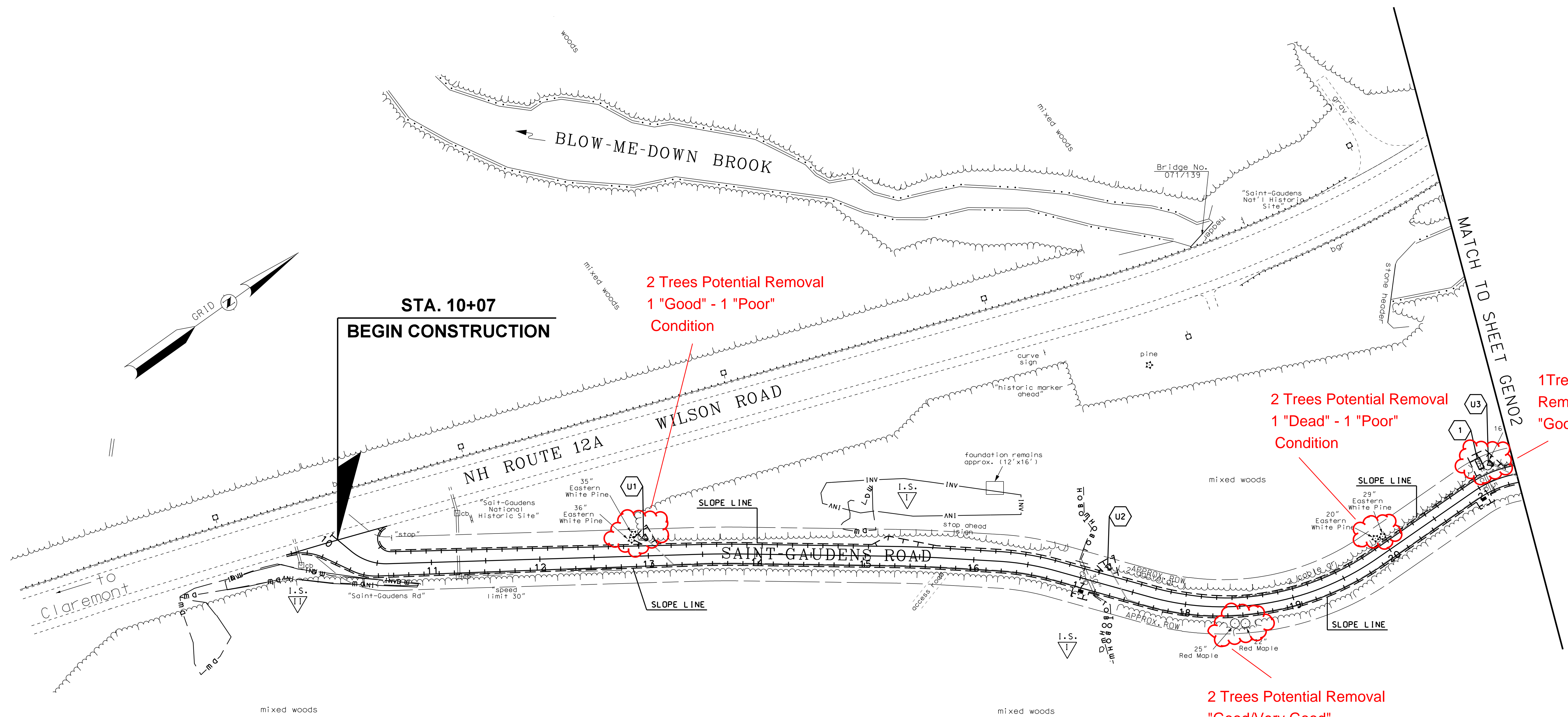


SDR PROCESSED		DATE		DATE		DATE	
NEW DESIGN		DATE		DATE		DATE	
SHEET CHECKED		NAME		DATE		DATE	
AS BUILT		DETAILS		DATE		DATE	

REVISIONS AFTER PROPOSAL		DESCRIPTION	
STATION			
STATION			
DATE			
NUMBER			



- U1 STA. 13+00, LT 15.0' TO STA 13+23, RT 8.7'
 CONST. 33.0 LF X 6" PERF. CORR. POLY. PIPE UNDERDRAIN
 CONST. UL-3 HEADWALL AT 13+00, LT 15.0'
 CONST. STONE FILL, CLASS C, AT OUTLET (5' X 3.5')
 STA. 13+23, RT 8.7' TO STA 17+04, RT 12.0'
 CONST. 379.0 LF X 6" PERF. CORR. POLY. PIPE UNDERDRAIN
 CONST. FLUSHING BASIN AT 17+04, RT 12.0'
- U2 STA. 17+25, LT 14.5' TO STA 17+47, RT 7.7'
 CONST. 31.5 LF X 6" PERF. CORR. POLY. PIPE UNDERDRAIN
 CONST. UL-3 HEADWALL AT 17+25, LT 14.5'
 CONST. STONE FILL, CLASS C, AT OUTLET (5' X 3.5')
 STA. 17+47, RT 7.7' TO STA 21+00, RT 11.0'
 CONST. 359.0 LF X 6" PERF. CORR. POLY. PIPE UNDERDRAIN
 CONST. FLUSHING BASIN AT 21+00, RT 11.0'

- U3 STA. 21+20, LT 13.5' TO STA 21+45, RT 7.5'
 CONST. 33.5 LF X 6" PERF. CORR. POLY. PIPE UNDERDRAIN
 CONST. UL-3 HEADWALL AT 21+20, LT 13.5'
 CONST. STONE FILL, CLASS C, AT OUTLET (5' X 3.5')
 STA. 21+45, RT 7.5' TO STA 22+44, RT 11.0'
 CONST. 100.0 LF X 6" PERF. CORR. POLY. PIPE UNDERDRAIN
 CONST. FLUSHING BASIN AT 22+44, RT 11.0'
- 1 STA. 21+10, LT 14.8'
 REMOVE EXIST. MRM HEADER (SUBSID.)
 CONST. PC-2 HEADWALL AT 21+10, LT 14.8'
 CONST. STONE FILL, CLASS C, AT OUTLET (10' X 5')

PRELIMINARY PLANS
 SUBJECT TO CHANGE
 DATE 9/21/2016

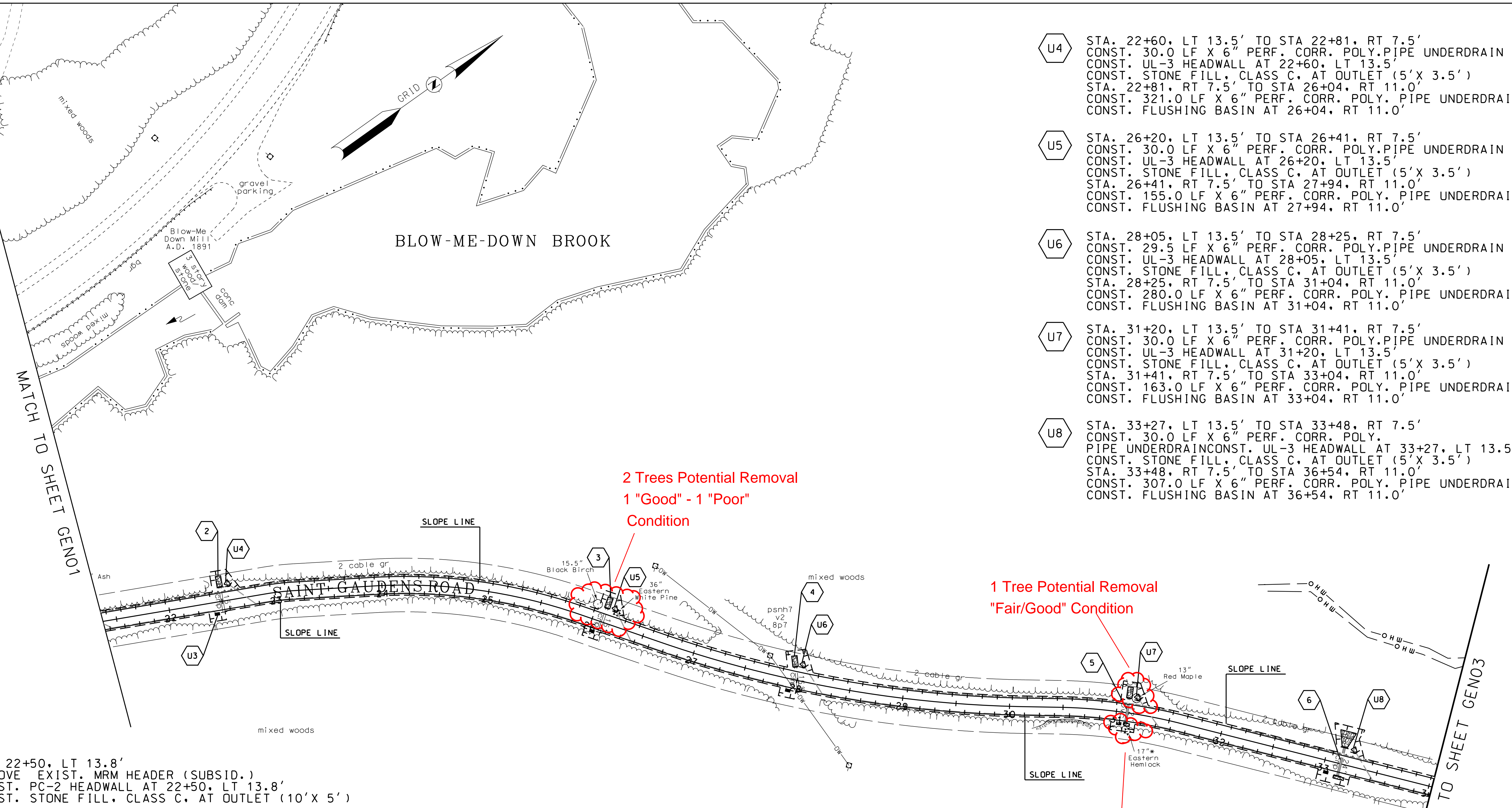


STATE OF NEW HAMPSHIRE
 DEPARTMENT OF TRANSPORTATION • BUREAU OF HIGHWAY DESIGN

General Plans

MODEL	DGN	STATE PROJECT NO.	SHEET NO.	TOTAL SHEETS
GEN01	40296genplan	40296	\$PSETNO\$	\$PSETTOT\$

REVISIONS AFTER PROPOSAL			DESCRIPTION		
STATION	STATION	STATION	STATION	STATION	STATION
DATE	DATE	DATE	DATE	DATE	DATE
NUMBER	NUMBER	NUMBER	NUMBER	NUMBER	NUMBER
DATE	DATE	DATE	DATE	DATE	DATE
DATE	DATE	DATE	DATE	DATE	DATE
NAME1	NAME2	NAME3	NAME4	NAME5	NAME6
AS PROCESSED	NEW DESIGN	SHEET CHECKED	AS BUILT	DETAILS	DATE



- U4 STA. 22+60, LT 13.5' TO STA 22+81, RT 7.5'
CONST. 30.0 LF X 6" PERF. CORR. POLY. PIPE UNDERDRAIN
CONST. UL-3 HEADWALL AT 22+60, LT 13.5'
CONST. STONE FILL, CLASS C, AT OUTLET (5' X 3.5')
STA. 22+81, RT 7.5' TO STA 26+04, RT 11.0'
CONST. 321.0 LF X 6" PERF. CORR. POLY. PIPE UNDERDRAIN
CONST. FLUSHING BASIN AT 26+04, RT 11.0'
- U5 STA. 26+20, LT 13.5' TO STA 26+41, RT 7.5'
CONST. 30.0 LF X 6" PERF. CORR. POLY. PIPE UNDERDRAIN
CONST. UL-3 HEADWALL AT 26+20, LT 13.5'
CONST. STONE FILL, CLASS C, AT OUTLET (5' X 3.5')
STA. 26+41, RT 7.5' TO STA 27+94, RT 11.0'
CONST. 155.0 LF X 6" PERF. CORR. POLY. PIPE UNDERDRAIN
CONST. FLUSHING BASIN AT 27+94, RT 11.0'
- U6 STA. 28+05, LT 13.5' TO STA 28+25, RT 7.5'
CONST. 29.5 LF X 6" PERF. CORR. POLY. PIPE UNDERDRAIN
CONST. UL-3 HEADWALL AT 28+05, LT 13.5'
CONST. STONE FILL, CLASS C, AT OUTLET (5' X 3.5')
STA. 28+25, RT 7.5' TO STA 31+04, RT 11.0'
CONST. 280.0 LF X 6" PERF. CORR. POLY. PIPE UNDERDRAIN
CONST. FLUSHING BASIN AT 31+04, RT 11.0'
- U7 STA. 31+20, LT 13.5' TO STA 31+41, RT 7.5'
CONST. 30.0 LF X 6" PERF. CORR. POLY. PIPE UNDERDRAIN
CONST. UL-3 HEADWALL AT 31+20, LT 13.5'
CONST. STONE FILL, CLASS C, AT OUTLET (5' X 3.5')
STA. 31+41, RT 7.5' TO STA 33+04, RT 11.0'
CONST. 163.0 LF X 6" PERF. CORR. POLY. PIPE UNDERDRAIN
CONST. FLUSHING BASIN AT 33+04, RT 11.0'
- U8 STA. 33+27, LT 13.5' TO STA 33+48, RT 7.5'
CONST. 30.0 LF X 6" PERF. CORR. POLY. PIPE UNDERDRAIN
CONST. UL-3 HEADWALL AT 33+27, LT 13.5'
CONST. STONE FILL, CLASS C, AT OUTLET (5' X 3.5')
STA. 33+48, RT 7.5' TO STA 36+54, RT 11.0'
CONST. 307.0 LF X 6" PERF. CORR. POLY. PIPE UNDERDRAIN
CONST. FLUSHING BASIN AT 36+54, RT 11.0'

- 2 STA 22+50, LT 13.8'
REMOVE EXIST. MRM HEADER (SUBSID.)
CONST. PC-2 HEADWALL AT 22+50, LT 13.8'
CONST. STONE FILL, CLASS C, AT OUTLET (10' X 5')
- 3 STA 26+10, LT 14.0'
REMOVE EXIST. MRM HEADER (SUBSID.)
CONST. PC-2 HEADWALL AT 26+10, LT 14.0'
CONST. STONE FILL, CLASS C, AT OUTLET (10' X 5')
- 4 STA 27+96, LT 12.3'
REMOVE EXIST. MRM HEADER (SUBSID.)
CONST. PC-2 HEADWALL AT 27+96, LT 12.3'
CONST. STONE FILL, CLASS C, AT OUTLET (10' X 5')
- 5 STA 31+10, LT 14.1' TO STA 31+10, RT 9.9'
REMOVE EXIST. MRM HEADER AT 31+10, LT. 14.1' (SUBSID.)
REMOVE EXIST. MRM HEADER AT 31+10, RT. 9.9' (SUBSID.)
REMOVE EXIST. 24.0 LF X 12" PVC PIPE (SUBSID.)
CONST. 24.0 LF X 15" CMP
CONST. PC-2 HEADWALL AT 31+10, LT 14.1'
CONST. STONE FILL, CLASS C, AT OUTLET (10' X 5')
CONST. PC-2 "L" HEADWALL AT 31+10, RT 9.9'
CONST. STONE FILL, CLASS C, AT INLET (2.5' X 5')
- 6 STA 33+15, LT 16.0' TO STA 33+15, RT 12.0'
REMOVE EXIST. HEADWALL AT 33+15, LT. 16.0' (SUBSID.)
REMOVE EXIST. HEADWALL AT 33+15, RT. 12.0' (SUBSID.)
REMOVE EXIST. 28.0 LF X 24" CMP (SUBSID.)
CONST. 28.0 LF X 24" CMP
CONST. PC-2 HEADWALL AT 33+15, LT 16.0'
CONST. STONE FILL, CLASS C, AT OUTLET (15' X 10')
CONST. PC-2 HEADWALL AT 33+15, RT 12.0'
CONST. STONE FILL, CLASS C, AT INLET (2.5' X 10')
- U3 STA. 21+20, LT 13.5' TO STA 21+45, RT 7.5'
CONST. 33.5 LF X 6" PERF. CORR. POLY. PIPE UNDERDRAIN
CONST. UL-3 HEADWALL AT 21+20, LT 13.5'
CONST. STONE FILL, CLASS C, AT OUTLET (5' X 3.5')
STA. 21+45, RT 7.5' TO STA 22+44, RT 11.0'
CONST. 100.0 LF X 6" PERF. CORR. POLY. PIPE UNDERDRAIN
CONST. FLUSHING BASIN AT 22+44, RT 11.0'

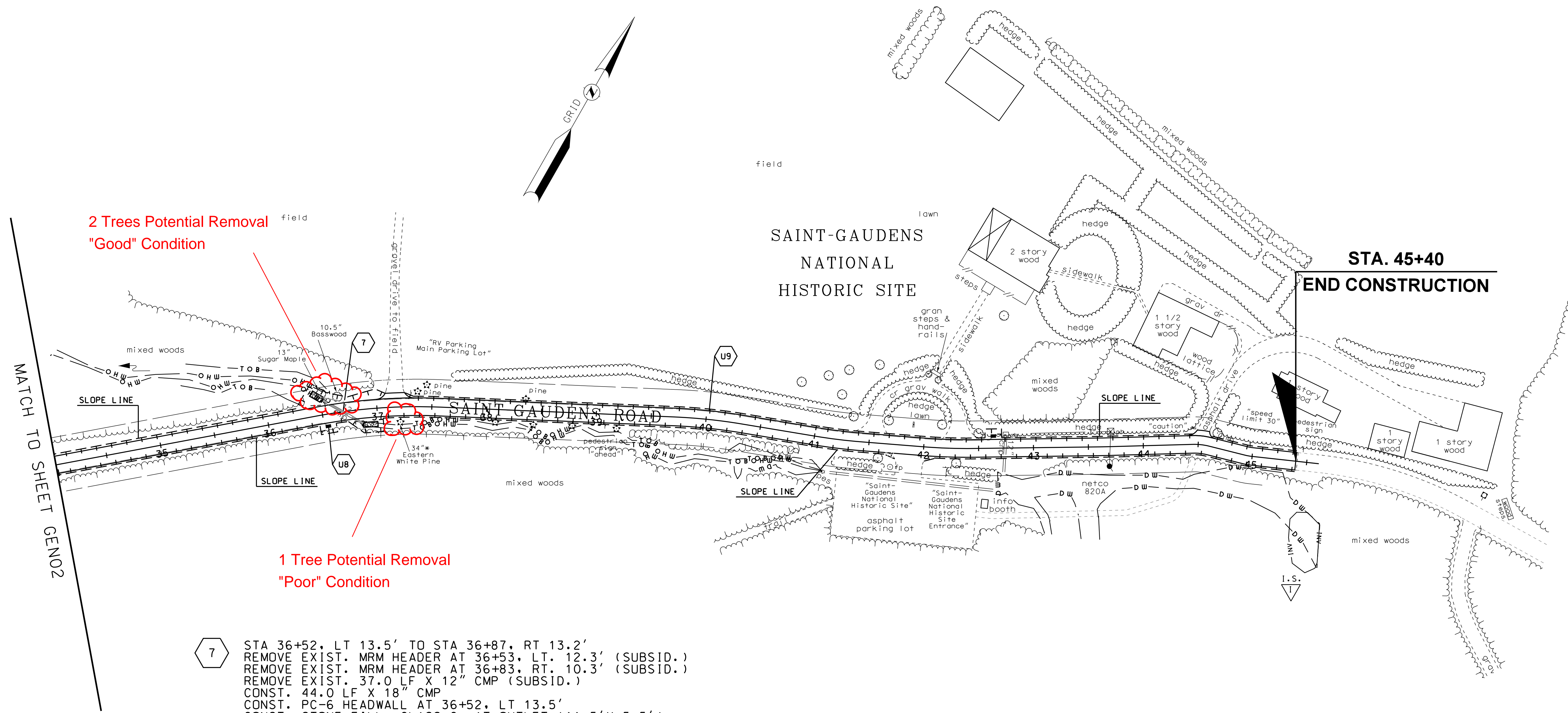
PRELIMINARY PLANS
SUBJECT TO CHANGE
DATE 9/21/2016



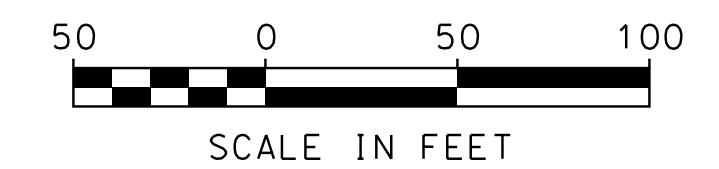
STATE OF NEW HAMPSHIRE				
DEPARTMENT OF TRANSPORTATION • BUREAU OF HIGHWAY DESIGN				
GENERAL PLANS				
MODEL	DGN	STATE PROJECT NO.	SHEET NO.	TOTAL SHEETS
GEN02	40296genp1an	40296	\$PSETNO\$	\$PSETTOT\$

SDR PROCESSED	JAA	DATE	06/2016
NEW DESIGN	NAME3	DATE	DATE3
SHEET CHECKED	AS BUILT DETAILS	DATE	DATE

REVISIONS AFTER PROPOSAL	STATION	DESCRIPTION



- 7** STA 36+52, LT 13.5' TO STA 36+87, RT 13.2'
 REMOVE EXIST. MRM HEADER AT 36+53, LT. 12.3' (SUBSID.)
 REMOVE EXIST. MRM HEADER AT 36+83, RT. 10.3' (SUBSID.)
 REMOVE EXIST. 37.0 LF X 12" CMP (SUBSID.)
 CONST. 44.0 LF X 18" CMP
 CONST. PC-6 HEADWALL AT 36+52, LT 13.5'
 CONST. STONE FILL, CLASS C, AT OUTLET (11.5' X 5.5')
 CONST. PC-6 HEADWALL AT 36+87, RT 13.2'
 CONST. STONE FILL, CLASS C, AT INLET (4.5' X 13')
- U8** STA. 33+27, LT 13.5' TO STA 33+48, RT 7.5'
 CONST. 30.0 LF X 6" PERF. CORR. POLY.
 PIPE UNDERDRAINCONST. UL-3 HEADWALL AT 33+27, LT 13.5'
 CONST. STONE FILL, CLASS C, AT OUTLET (5' X 3.5')
 STA. 33+48, RT 7.5' TO STA 36+54, RT 11.0'
 CONST. 307.0 LF X 6" PERF. CORR. POLY. PIPE UNDERDRAIN
 CONST. FLUSHING BASIN AT 36+54, RT 11.0'
- U9** STA. 36+53, LT 16.0' TO STA 42+64, LT 11.0'
 CONST. 615.0 LF X 6" PERF. CORR. POLY. PIPE UNDERDRAIN
 CONNECT OUTLET TO 18" HEADWALL
 (SEE DRAINAGE NOTE #7)
 CONST. FLUSHING BASIN AT 42+64, LT 11.0'



PRELIMINARY PLANS
 SUBJECT TO CHANGE
 DATE 9/21/2016

STATE OF NEW HAMPSHIRE				
DEPARTMENT OF TRANSPORTATION • BUREAU OF HIGHWAY DESIGN				
GENERAL PLANS				
MODEL	DGN	STATE PROJECT NO.	SHEET NO.	TOTAL SHEETS
GEN03	40296genplan	40296	\$PSETNO\$	\$PSETTOT\$