

BEDFORD 151/151
NH114 over BOWMAN BROOK

Wednesday, November 05, 2014

BANK EROSION REPAIRED
AT EAST OUTLET. SRL.



D153 71

Wednesday, November 05, 2014

RIP RAP PLACED AT EAST
OUTLET AROUND MP. SRL.



D153 72

Wednesday, November 05, 2014

VIEW OF REPAIRED
INVERT AT EAST. SRL.

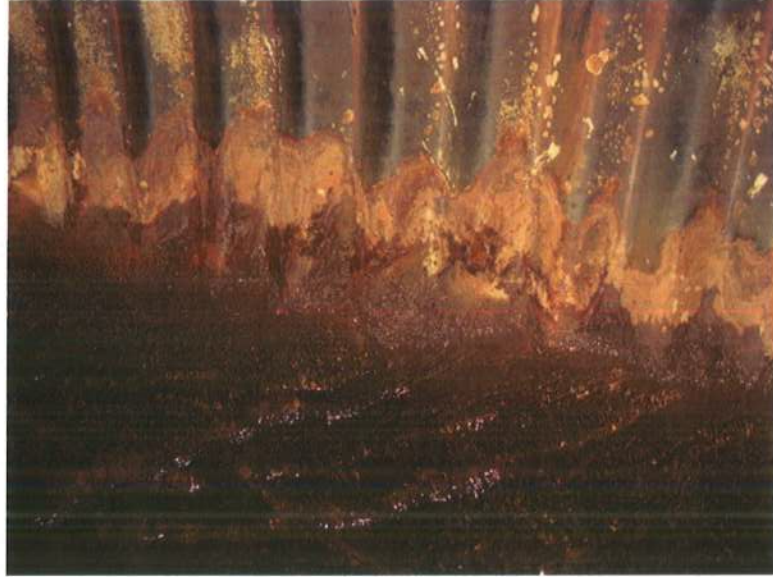


D153 73

BEDFORD 151/151
NH114 over BOWMAN BROOK

Friday, November 13, 2015

RADIUS HOLED ABOVE
REPAIRED AREA,
NORTHEAST. (SRL)



D175 30

BEDFORD 151/151

NH114 over BROOK

Monday, November 21, 2011

VOIDED AT OUTLET.
(STATE RED LIST.)



D079 10

Monday, November 21, 2011

EROSION OVER PIPE
DOWNSTREAM. (STATE
RED LIST.)



D079 11

BEDFORD 151/151

NH114

OVER

BROOK

Monday, April 27, 2009

SOUTH APPROACH. RUNS
DIAGONALLY UNDER IB-C
BRIDGE. ADDED TO THE
INVENTORY & TO THE STATE
RED LIST.



D032 25

Monday, April 27, 2009

EAST ELEVATION. EROSION
AT SLOPE. ADDED TO THE
INVENTORY & TO THE STATE
RED LIST.



D032 23

Monday, April 27, 2009

INVERT HOLED AT EAST.
ADDED TO THE INVENTORY &
TO THE STATE RED LIST.



D032 22