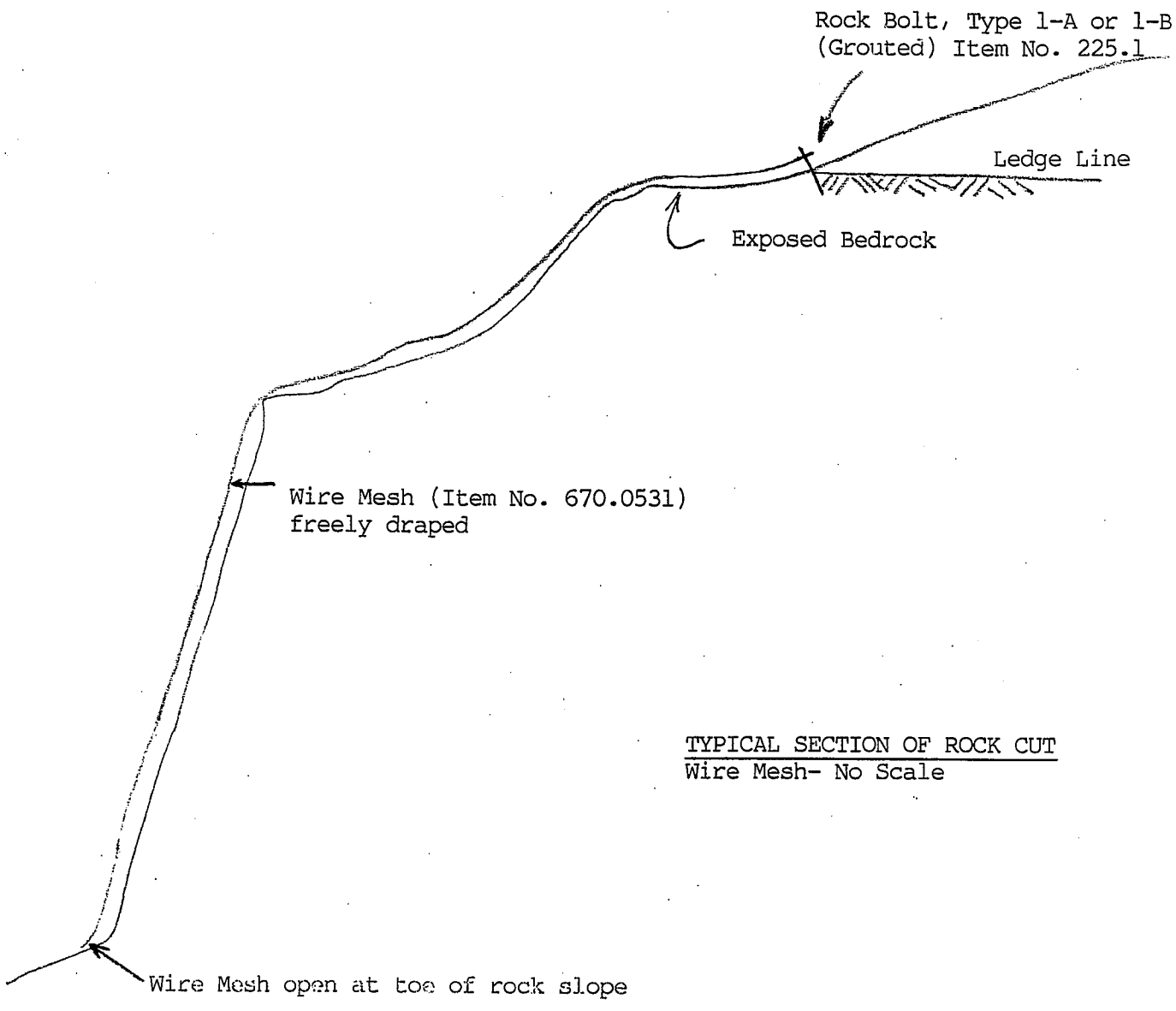


**Typicals and Figure**

**for**

**Wire Mesh Items**

**(Items 225.1, 670.0531, 670.0532)**



Rock Bolt, Type 1-A or 1-B  
(Grouted) Item No. 225.1

Ledge Line

Exposed Bedrock

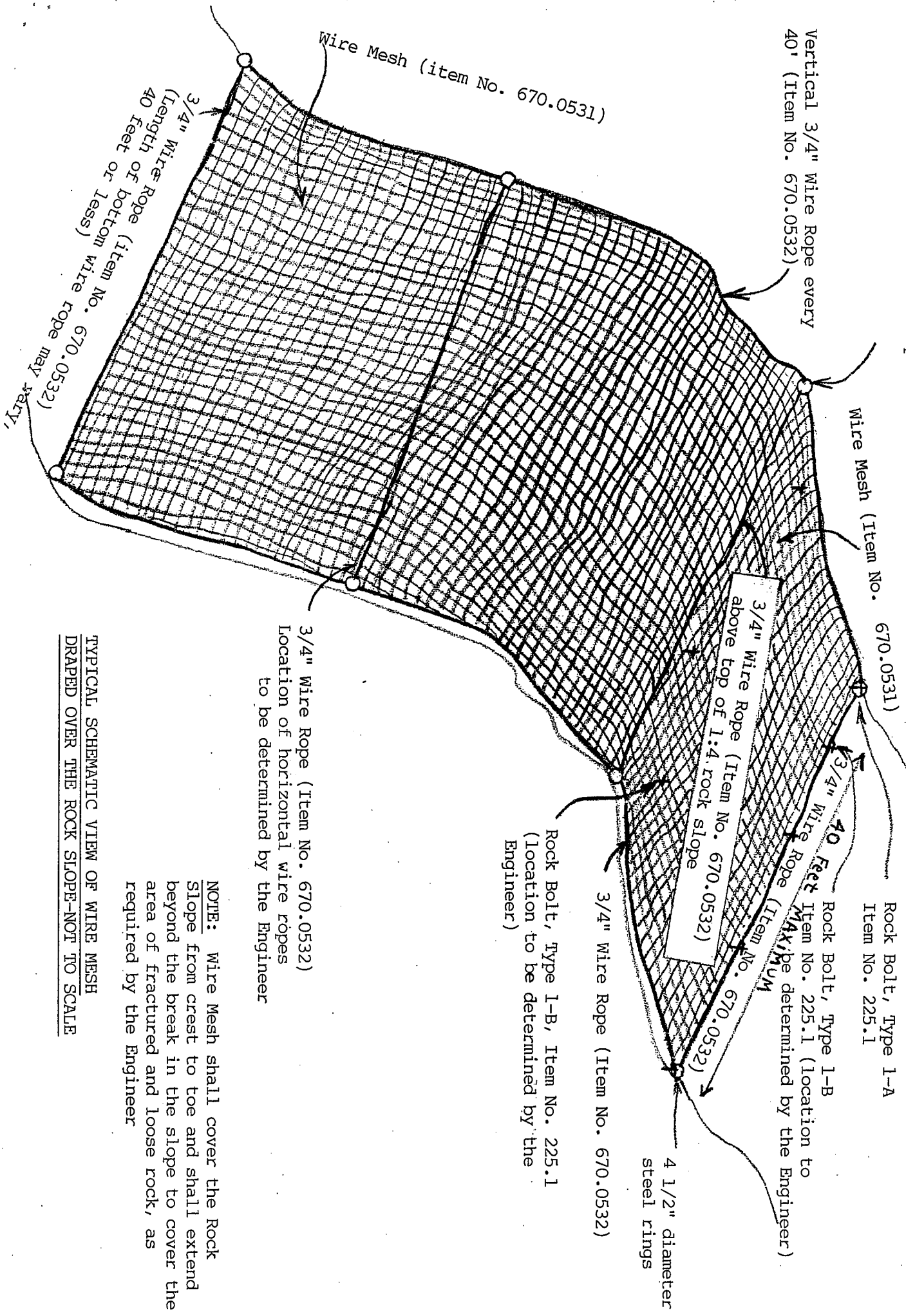
Wire Mesh (Item No. 670.0531)  
freely draped

TYPICAL SECTION OF ROCK CUT  
Wire Mesh- No Scale

Wire Mesh open at toe of rock slope

4 1/2" diameter steel rings  
at the intersection of  
horizontal and vertical wire ropes

Vertical 3/4" Wire Rope every  
40' (Item No. 670.0532)



Wire Mesh (Item No. 670.0531)

Rock Bolt, Type 1-A  
Item No. 225.1

Rock Bolt, Type 1-B  
Item No. 225.1 (location to  
be determined by the Engineer)

3/4" Wire Rope (Item No. 670.0532)  
above top of 1:4 rock slope

4 1/2" diameter  
steel rings

3/4" Wire Rope (Item No. 670.0532)

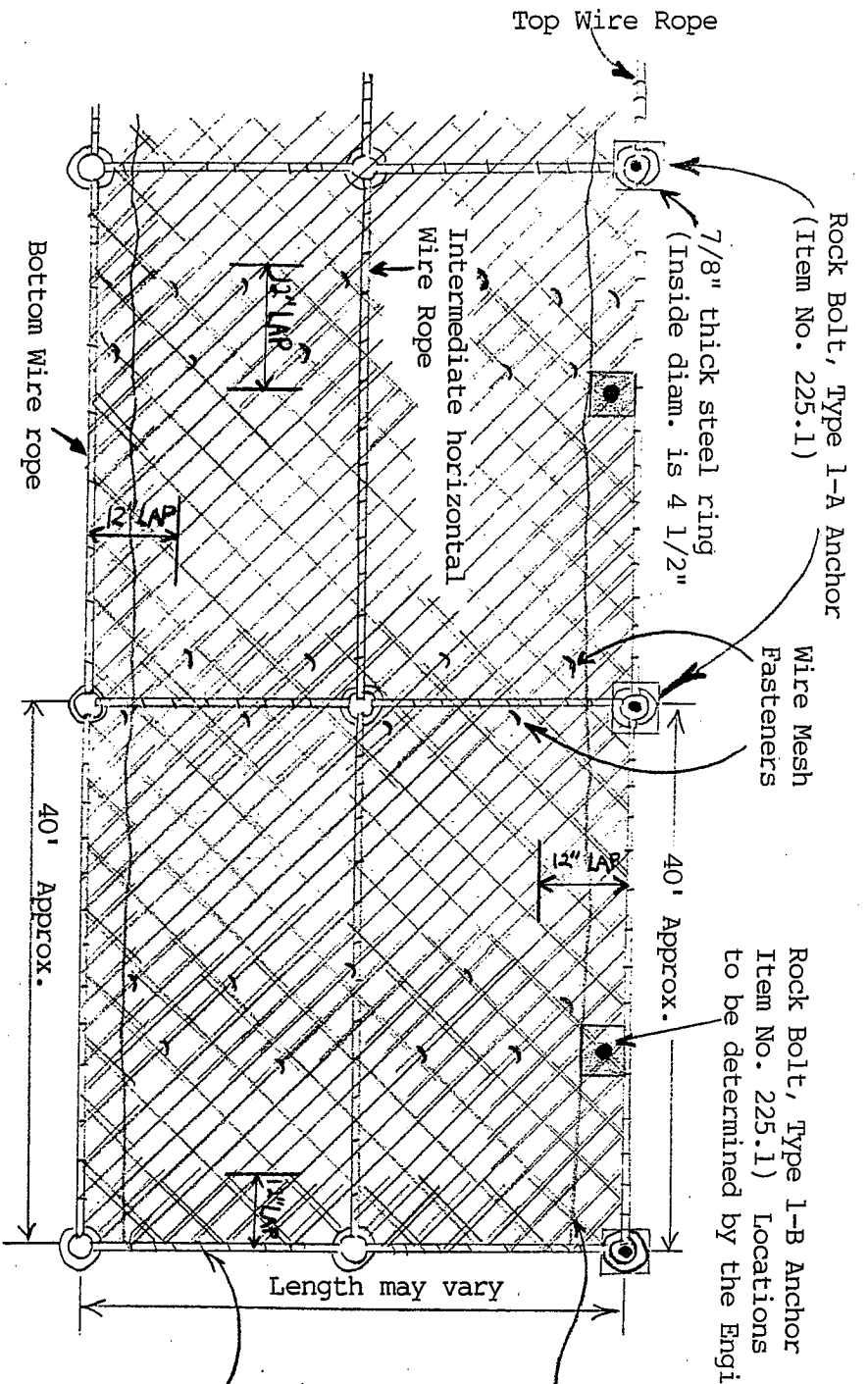
Rock Bolt, Type 1-B, Item No. 225.1  
(location to be determined by the  
Engineer)

3/4" Wire Rope (Item No. 670.0532)  
Location of horizontal wire ropes  
to be determined by the Engineer

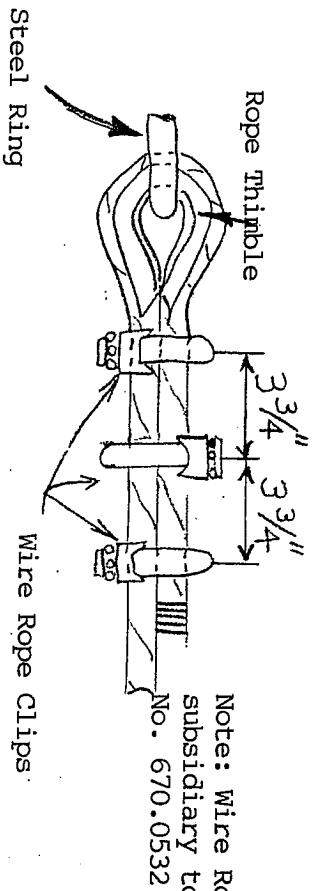
**NOTE:** Wire Mesh shall cover the Rock  
Slope from crest to toe and shall extend  
beyond the break in the slope to cover the  
area of fractured and loose rock, as  
required by the Engineer

TYPICAL SCHEMATIC VIEW OF WIRE MESH  
DRAPED OVER THE ROCK SLOPE-NOT TO SCALE

3/4" Wire Rope (Item No. 670.0532)  
(Length of bottom wire  
40 feet or less)  
3/4" Wire Rope (Item No. 670.0532)  
may vary,



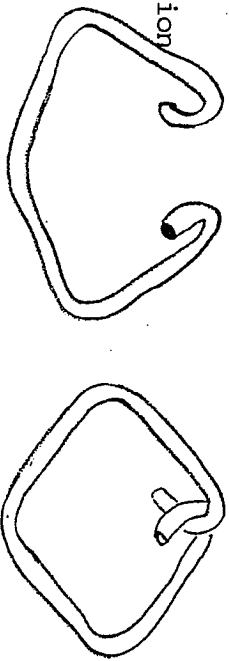
Wire Rope and Mesh Details



Note: Wire Rope connection subsidiary to Item No. 670.0532

Wire Mesh Slope Protection

Locking Wire Mesh Fastener--Used only for connecting Wire Mesh strips at vertical overlaps (no wire rope)



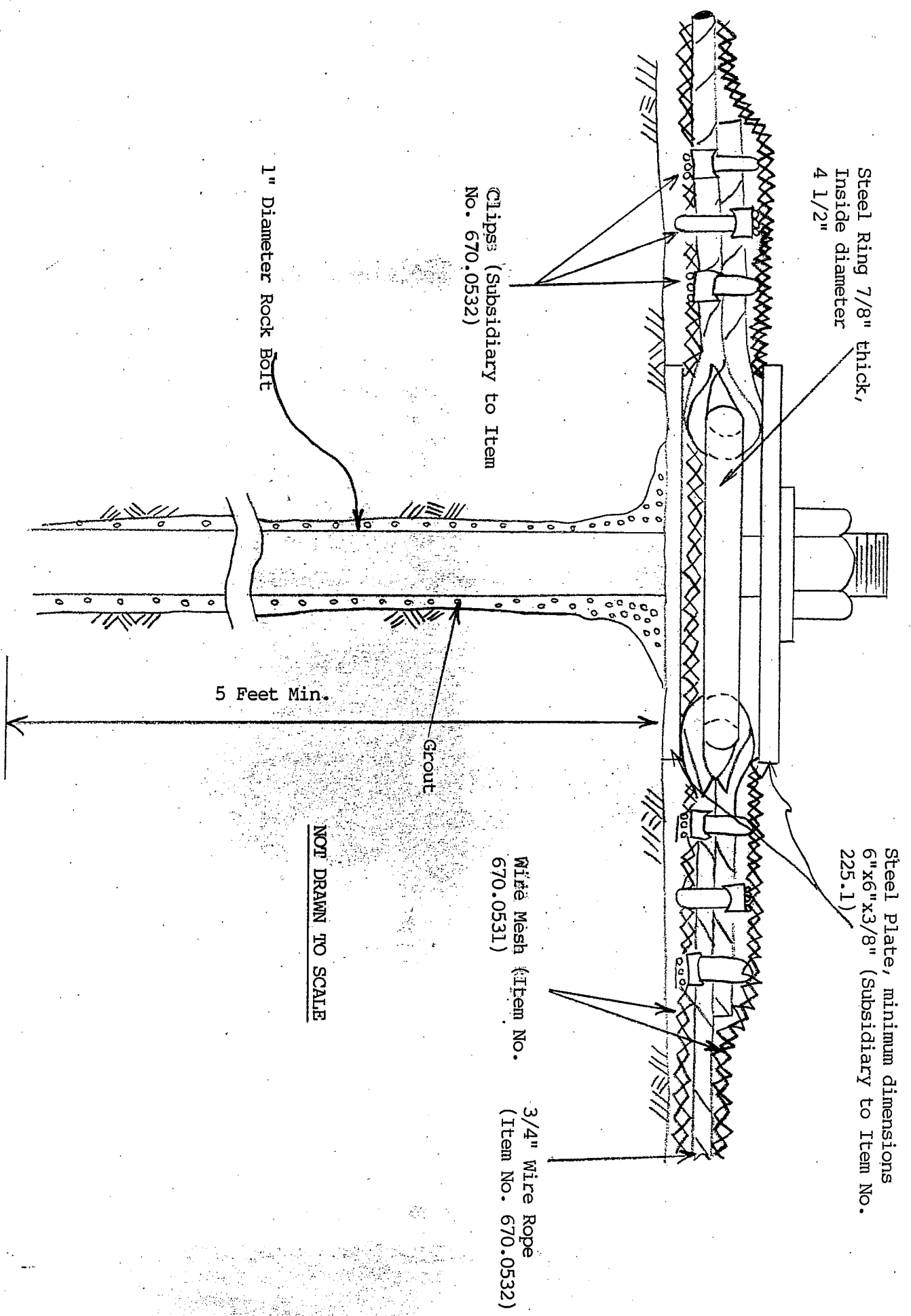
Wire diameter 0.0866 inches

Fasten horizontal lap by continuously weaving with tie (lacing) wire

Fasten Mesh to vertical wire ropes by continuously weaving with tie (lacing) wire.

Note: The Contractor may provide two twin base cable clips at 3 inch center in lieu of the three U-bolt type cable clips as shown

Type 1-A Rock Bolt, Grouted (Item No. 225.1)



Steel Ring 7/8" thick,  
Inside diameter  
4 1/2"

Clips (Subsidiary to Item  
No. 670.0532)

1" Diameter Rock Bolt

5 Feet Min.

Grout

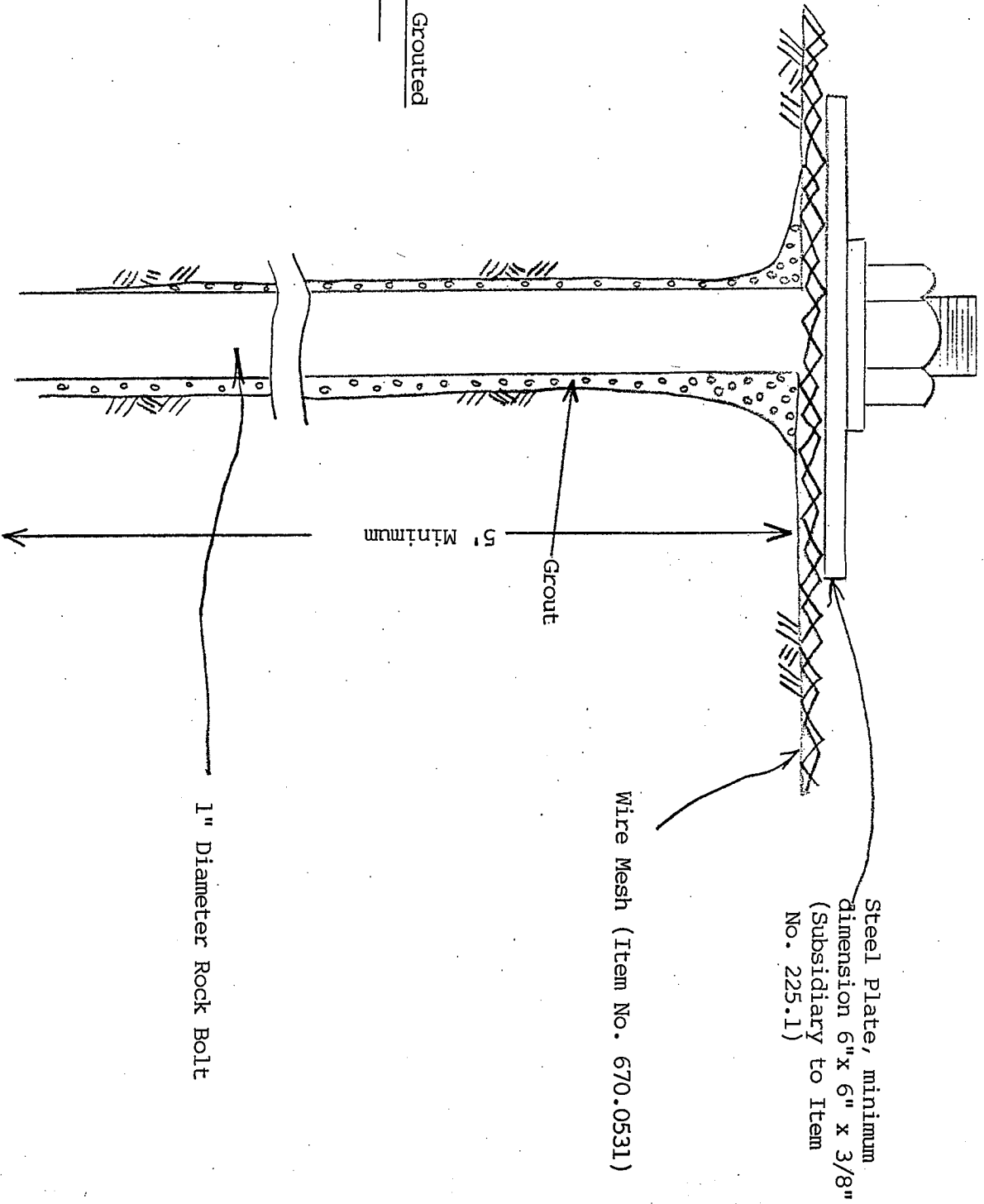
Steel Plate, minimum dimensions  
6" x 6" x 3/8" (Subsidiary to Item No.  
225.1)

Wire Mesh (Item No.  
670.0531)

3/4" Wire Rope  
(Item No. 670.0532)

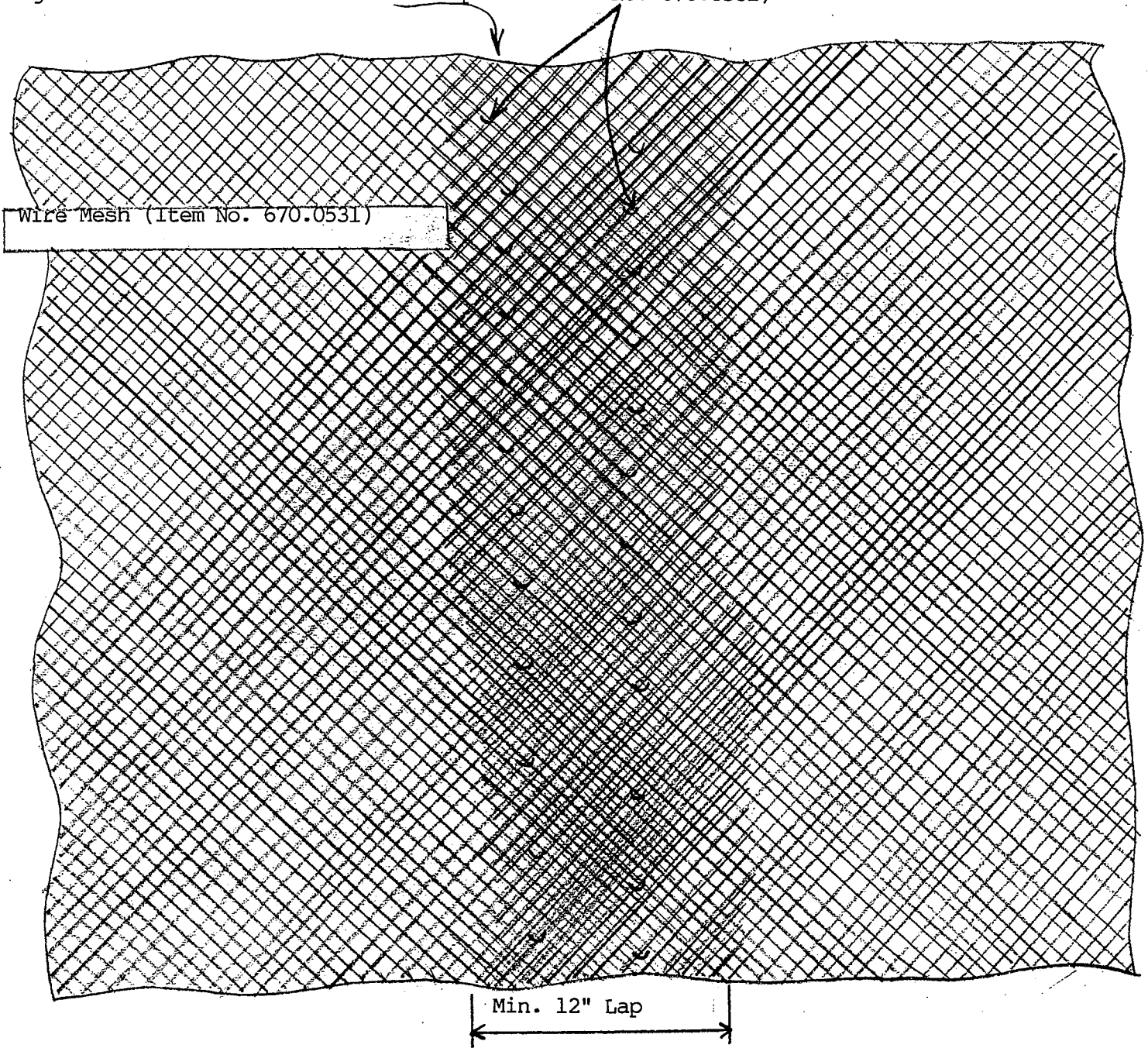
NOT DRAWN TO SCALE

Type 1-B Rock Bolt, Grouted  
(Item No. 225.1)



Overlap may be more than 12" due to longitudinal curvature of the rock slope

Wire Mesh Fasteners-4.5" staggered vertical spacing (subsidiary to Item No. 670.0531)



Galvanized hexagonal double twisted steel wire mesh, joining of adjacent wire mesh strips

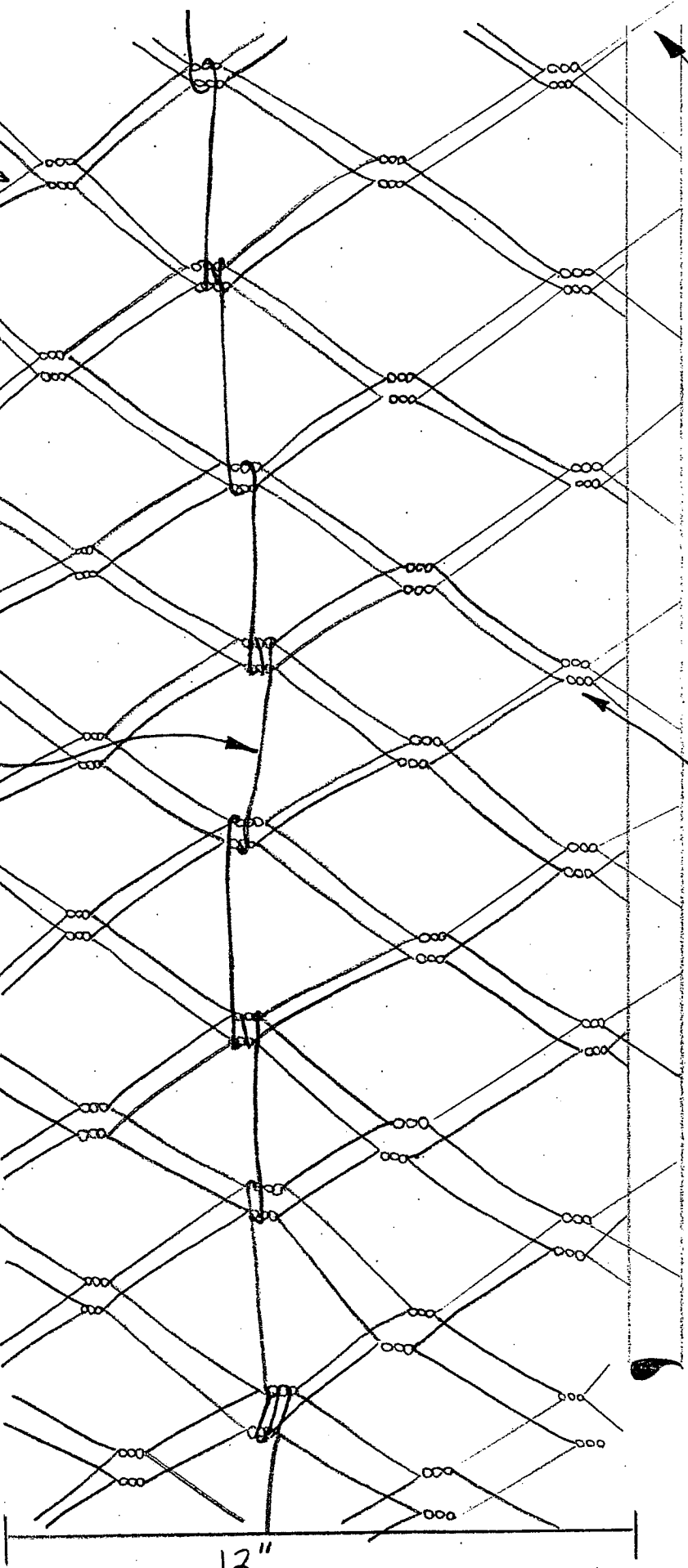
3/4" Galvanized Steel Wire Rope  
(Item No. 670.0532)

Wire Mesh to be folded underneath,  
so that no sharp edges are exposed

Wire Mesh (Item No. 670.0531)

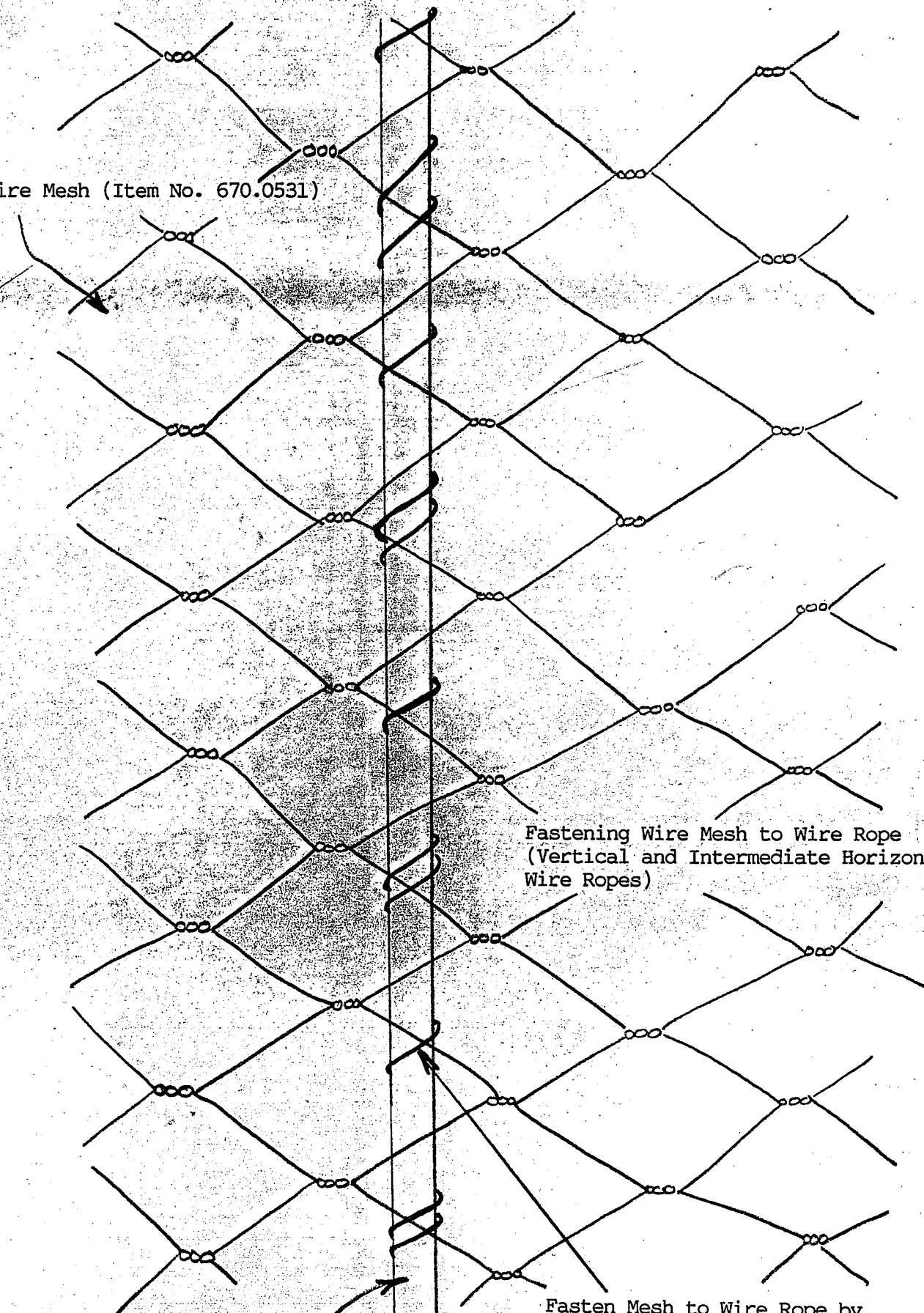
Fasten horizontal lap by continuously  
weaving with tie wire (lacing wire)  
with 0.0866 inch, galvanized wire  
(Subsidiary to Item No. 670.0531)

Fastening Wire Mesh to Top and  
Bottom Wire Ropes



12"





Wire Mesh (Item No. 670.0531)

Fastening Wire Mesh to Wire Rope  
(Vertical and Intermediate Horizontal  
Wire Ropes)

3/4" Galvanized Steel Wire Rope  
(Item No. 670.0532)

Fasten Mesh to Wire Rope by  
continuously weaving with tie  
wire (lacing wire), 0.0866 inch  
in diameter (Subsidiary to Item No.  
670.0531)

WIRE MESH FASTENERS -  
4 1/2 INCH STAGGERED  
VERTICAL SPACING  
(SUBSIDIARY TO ITEM  
NO. 670:0531)

GALVANIZED STEEL HOG RINGS

