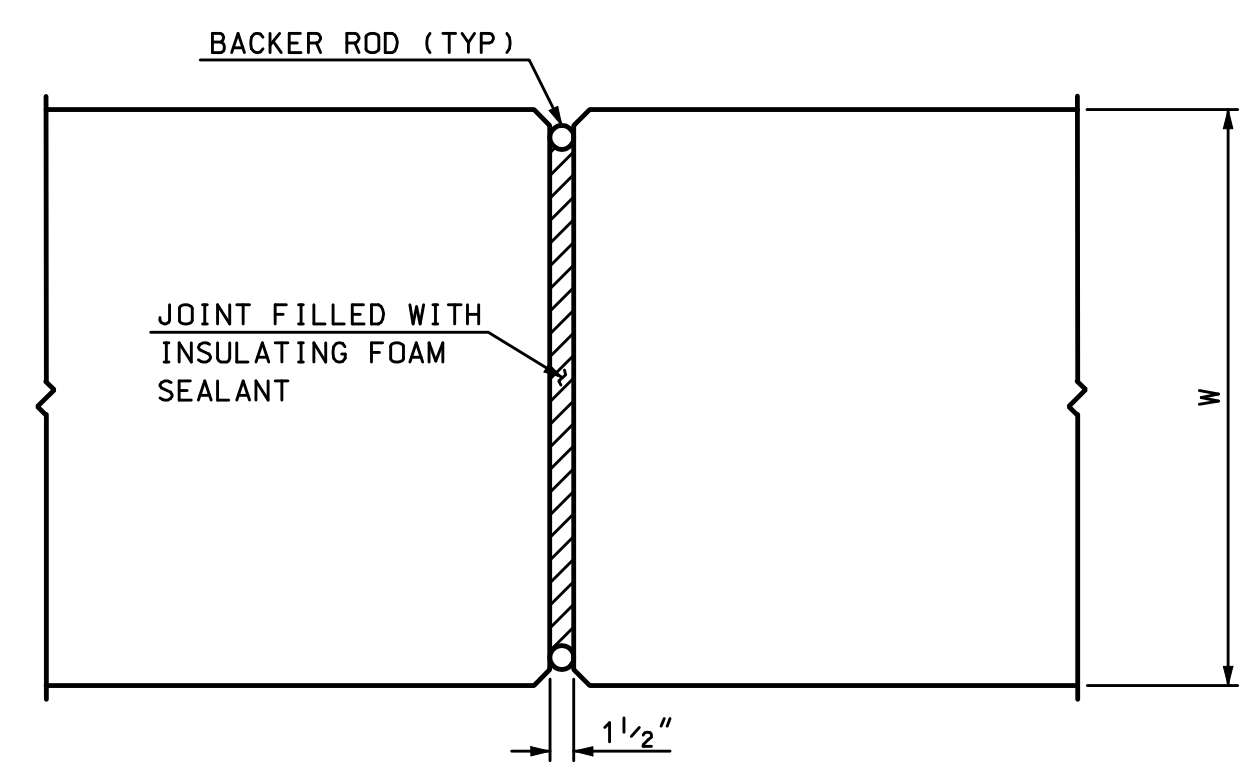
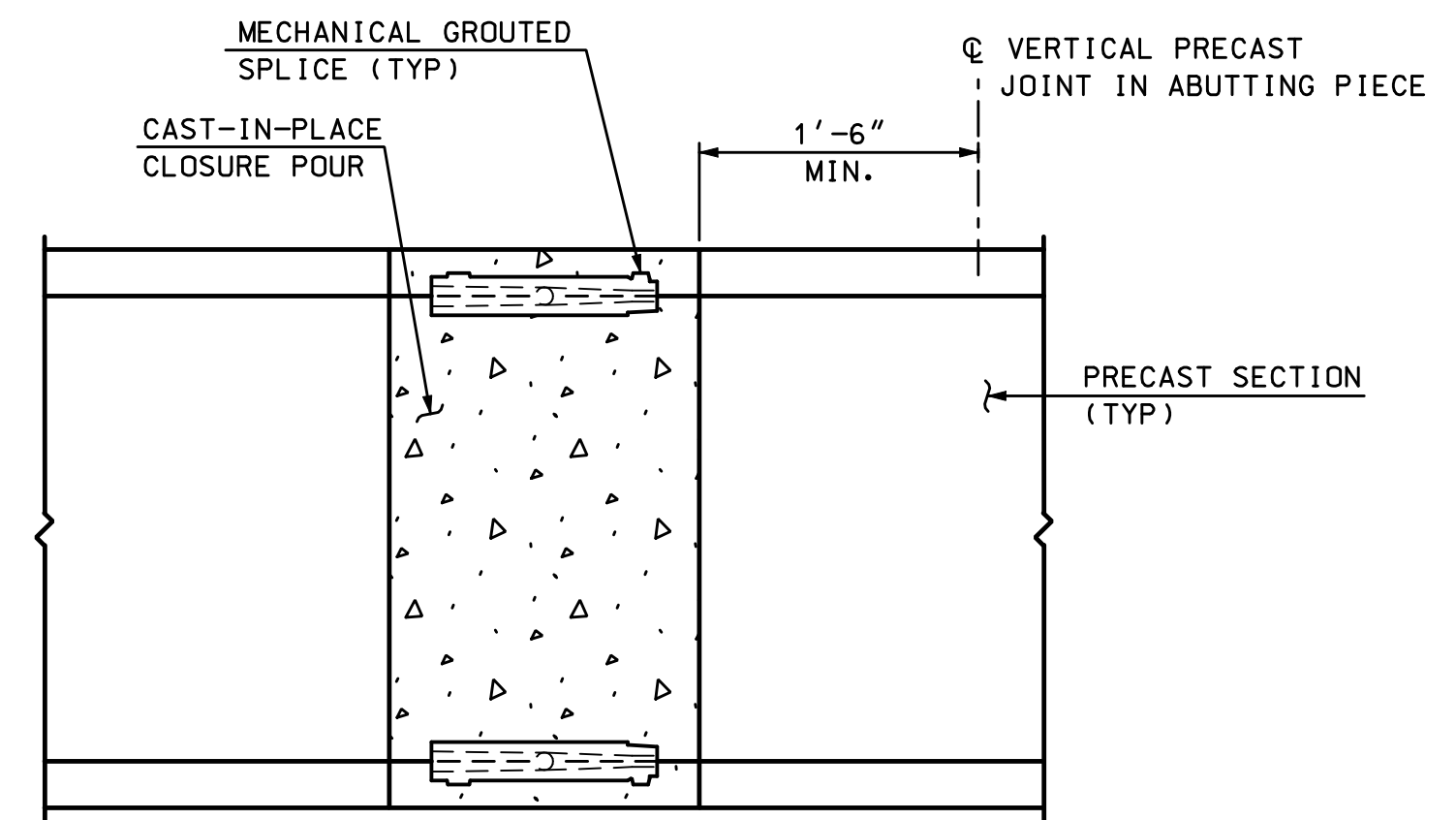


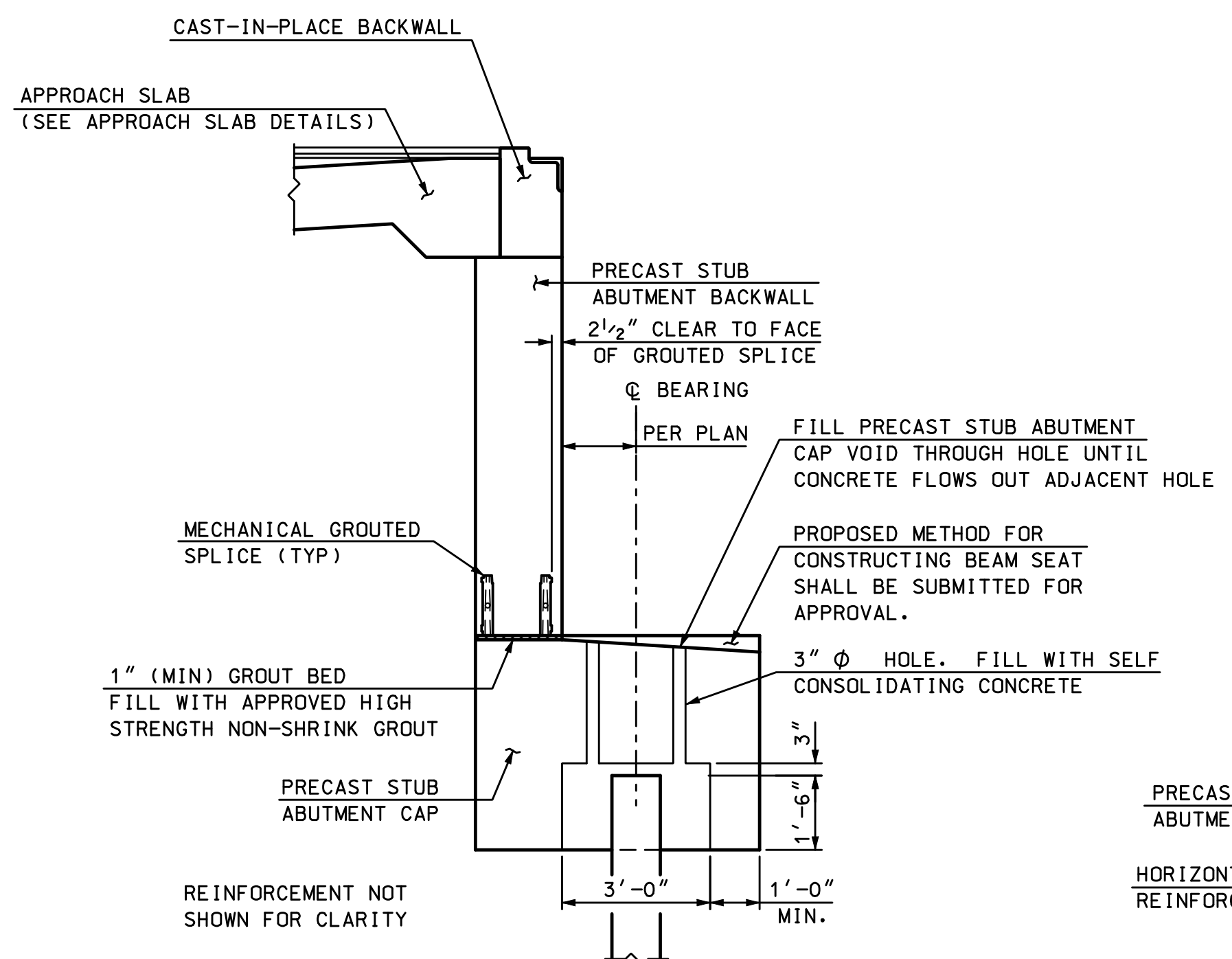
**VERTICAL JOINT DETAIL A**  
SCALE: 1" = 1'-0"  
(FOR WALLS TALLER THAN 15 FEET AND PRECAST STUB ABUTMENT)



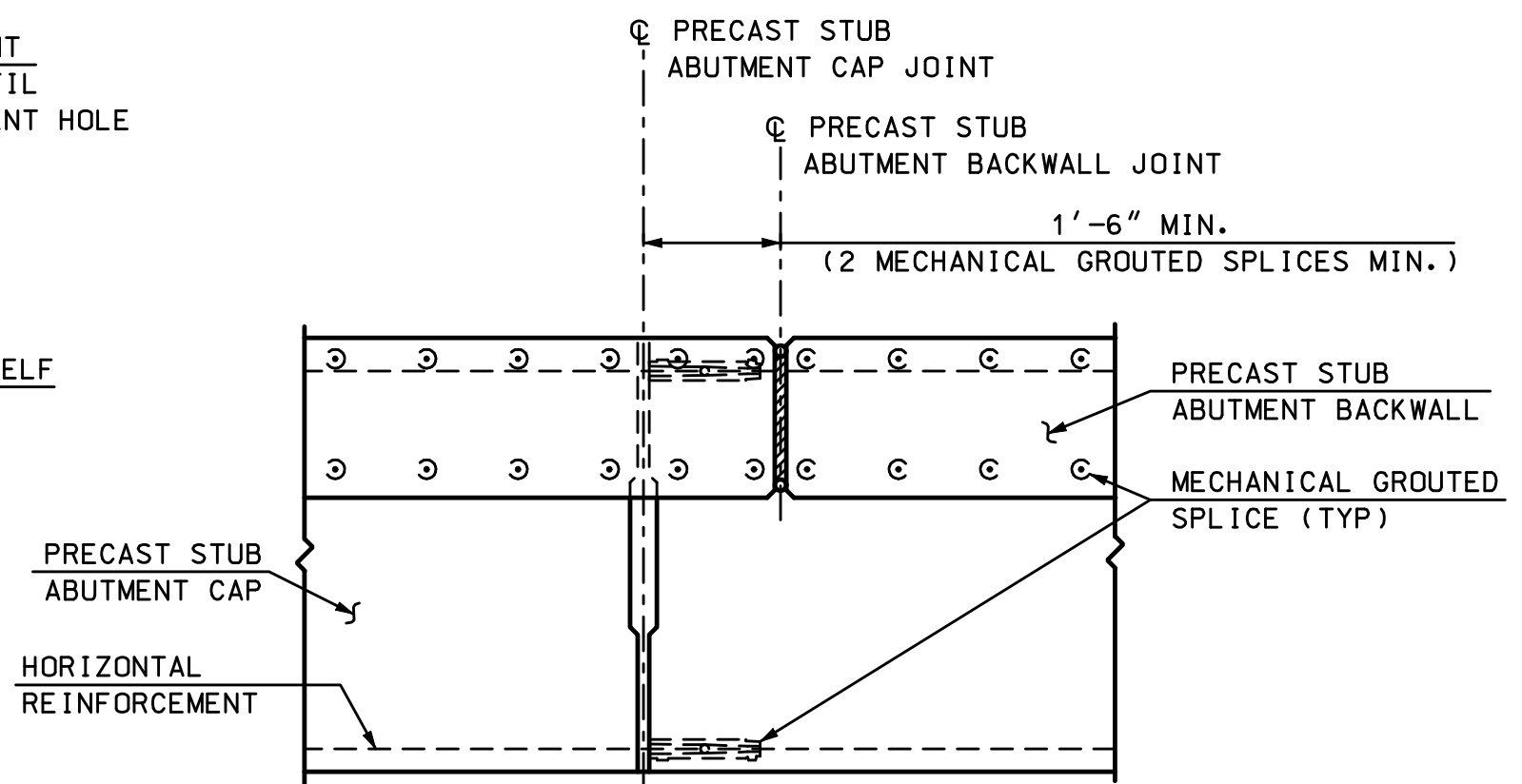
**VERTICAL JOINT DETAIL B**  
SCALE: 1" = 1'-0"  
(FOR WALLS 15 FEET OR SHORTER)



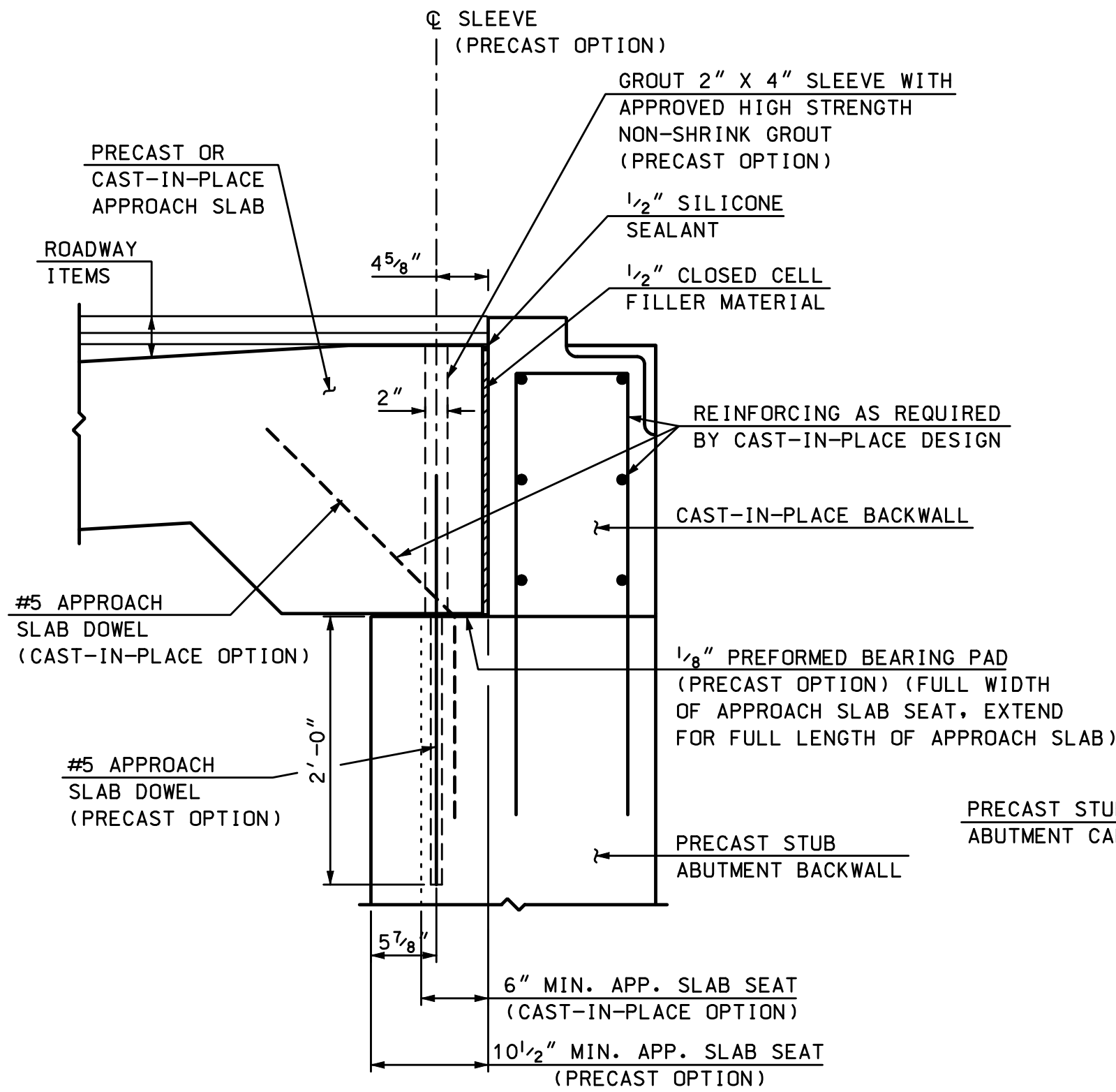
**OPTIONAL CAST-IN-PLACE CLOSURE POUR**  
SCALE: 1" = 1'-0"



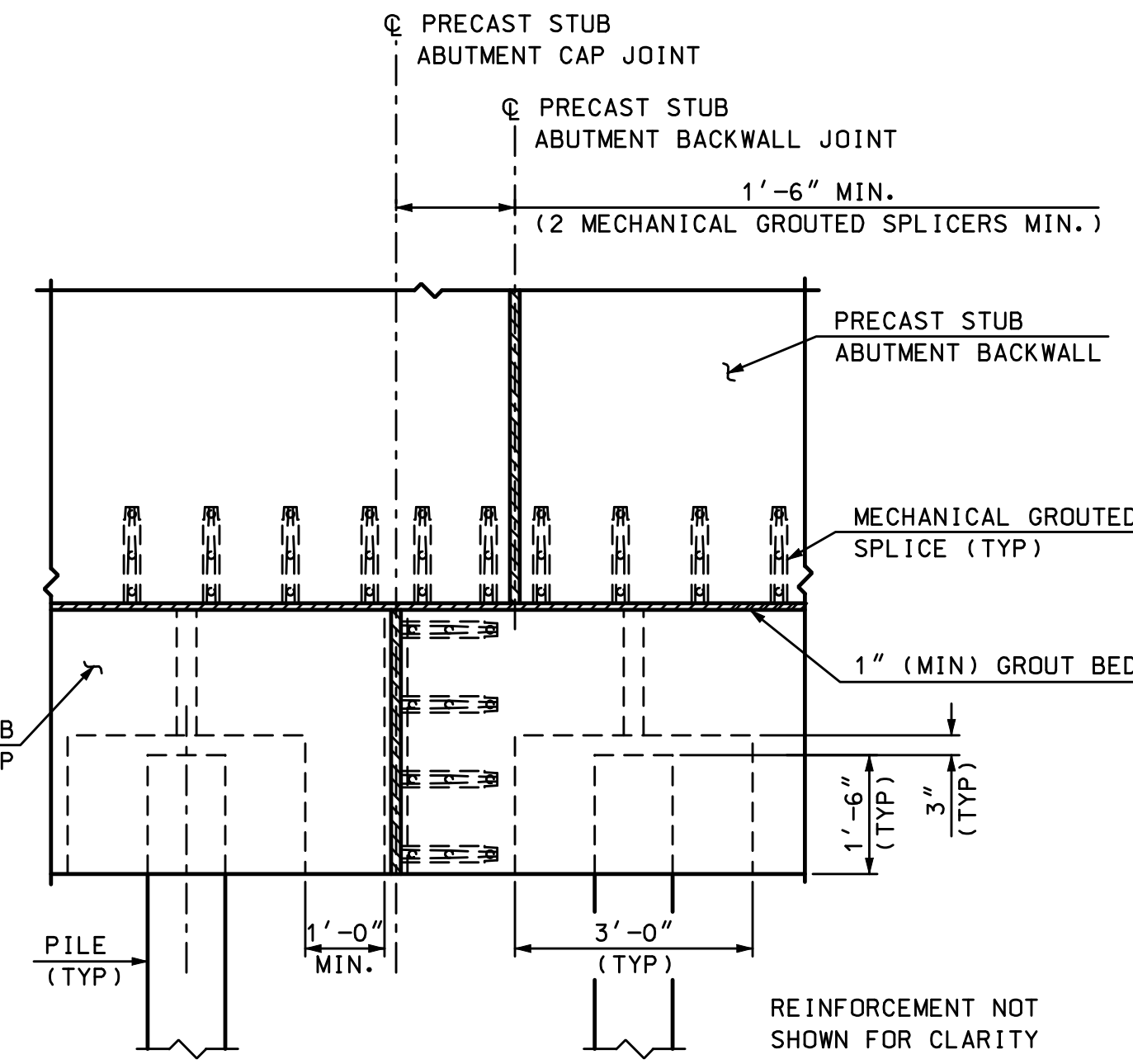
**STUB ABUTMENT SECTION**  
SCALE: 3/8" = 1'-0"



**VERTICAL JOINT OFFSET PLAN VIEW**  
SCALE: 1/2" = 1'-0"



**APPROACH SLAB OPTIONS**  
SCALE: 1" = 1'-0"



**STUB ABUTMENT ELEVATION**  
SCALE: 1/2" = 1'-0"

**PRECAST STUB ABUTMENT NOTES**

- APPROVED SHOP DRAWINGS SHALL BE SUBMITTED TO THE BUREAU OF BRIDGE DESIGN FOR DOCUMENTATION AND SHALL INCLUDE AN ASSEMBLY PLAN WITH TEMPORARY BRACING REQUIREMENTS. SEE ADDITIONAL REQUIREMENTS IN SPECIAL PROVISIONS.
- JOINTS IN PRECAST MEMBERS MAY BE INTRODUCED IF REQUIRED. ALL JOINTS SHALL BE CLEARLY INDICATED ON THE SHOP DRAWINGS AND SHALL UTILIZE THE OPTIONAL JOINT DETAILS SHOWN ON THIS SHEET UNLESS OTHERWISE APPROVED BY THE DEPARTMENT.
- TEMPORARY SUPPORTS SHALL BE REQUIRED IF THE STRUCTURE IS BACKFILLED PRIOR TO FULL MOMENT CAPACITY BETWEEN ALL CONNECTED ELEMENTS IS ACHIEVED. ALL DETAILS SHALL BE INCLUDED IN THE SHOP DRAWINGS AND ASSEMBLY PLAN.
- ONE ASSEMBLY PLAN SHALL DOCUMENT ALL ASPECTS OF THE BRIDGE SYSTEM. THE BRIDGE SYSTEM INCLUDES GROUT AND PRECAST MEMBERS. THE ASSEMBLY PLAN SHALL BE STAMPED BY A LICENSED PROFESSIONAL ENGINEER AND SUBMITTED TO THE BUREAU OF BRIDGE DESIGN FOR APPROVAL. THE ENGINEER OF RECORD FOR THE ENTIRE ASSEMBLY PLAN SHALL BE CLEARLY INDICATED. ALL SUPPLEMENTAL CALCULATIONS SHALL BE INCLUDED IN THE SUBMITTAL. SEE SPECIAL PROVISION.
- MECHANICAL GROUDED SPLICES SHALL BE USED TO PROVIDE MOMENT CONNECTIONS BETWEEN PRECAST MEMBERS. GROUDED SPLICES SHALL DEVELOP A MINIMUM OF 125% OF THE SPECIFIED YIELD STRENGTH OF THE REINFORCING BAR BEING SPLICED. GROUT PORTS SHALL BE ON THE BACK FACE OF ELEMENTS (HIDDEN FROM VIEW) WHENEVER POSSIBLE.
- VERTICAL JOINT OFFSET SHALL BE MAINTAINED BETWEEN ALL ABUTMENT CAP AND BACKWALL JOINTS.
- NO VERTICAL JOINTS SHALL BE ALLOWED IN THE BEAM SEAT OR WITHIN 1'-6" BEYOND EDGE OF BEAM SEAT. VERTICAL JOINTS BETWEEN BEAM SEATS SHALL BE HALFWAY BETWEEN BEAM SEATS TO THE EXTENT PRACTICABLE.
- BARRIER MEMBRANE, VERTICAL SURFACES SHALL BE PLACED OVER THE BACK OF ALL THE JOINTS IN THE SUBSTRUCTURE MEMBERS. A 2'-0" WIDE STRIP SHALL BE CENTERED OVER THE JOINT.
- THE PROPOSED TEMPORARY SUPPORT LOCATIONS FOR THE PRECAST CAPS AND BACKWALLS SHALL BE INCLUDED IN THE SHOP DRAWINGS AND ASSEMBLY PLAN.
- GROUT SHALL MEET THE REQUIREMENTS OF 528.2.9.1 AND HAVE A MINIMUM STRENGTH OF THE CAST-IN-PLACE CONCRETE THAT IS BEING REPLACED.
- SEE SPECIAL PROVISIONS FOR ADDITIONAL INFORMATION.

**STUB ABUTMENT REINFORCING NOTES**

- ALL REINFORCEMENT SHALL HAVE A MINIMUM CLEAR COVER OF 2 1/2". MECHANICAL GROUDED SPLICES SHALL HAVE A MINIMUM OF 1 1/2" CLEAR COVER FROM CONCRETE SURFACES UNLESS DETAILED OTHERWISE. ACTUAL CLEAR COVER TO REINFORCEMENT SHALL BE DETAILED ON THE SHOP DRAWINGS.
- REINFORCING IN OPPOSING FACES OF MEMBERS SHALL BE ALIGNED.
- PLACE REINFORCING TO AVOID PILES.

STATE OF NEW HAMPSHIRE									
DEPARTMENT OF TRANSPORTATION * BUREAU OF BRIDGE DESIGN									
TOWN	---	BRIDGE NO.	---	STATE PROJECT	---				
LOCATION	---								
PRECAST OPTION SUBSTRUCTURE DETAILS (STUB ABUTMENT)									BRIDGE SHEET
REVISIONS AFTER PROPOSAL		BY	DATE	CHECKED	BY	DATE	---	OF	---
		DESIGNED	---	CHECKED	---	---	---	FILE NUMBER	---
		DRAWN	---	CHECKED	---	---	---	---	---
		QUANTITIES	---	CHECKED	---	---	---	---	---
		ISSUE DATE		FEDERAL PROJECT NO.		SHEET NO.		TOTAL SHEETS	
		REV. DATE		-----		---		---	---

SUBDIRECTORY	.DGN LOCATOR	SHEET SCALE
BRD/Design-Build	DB-PRECAST-ABUT	AS NOTED