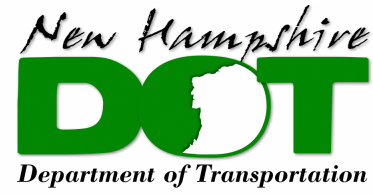
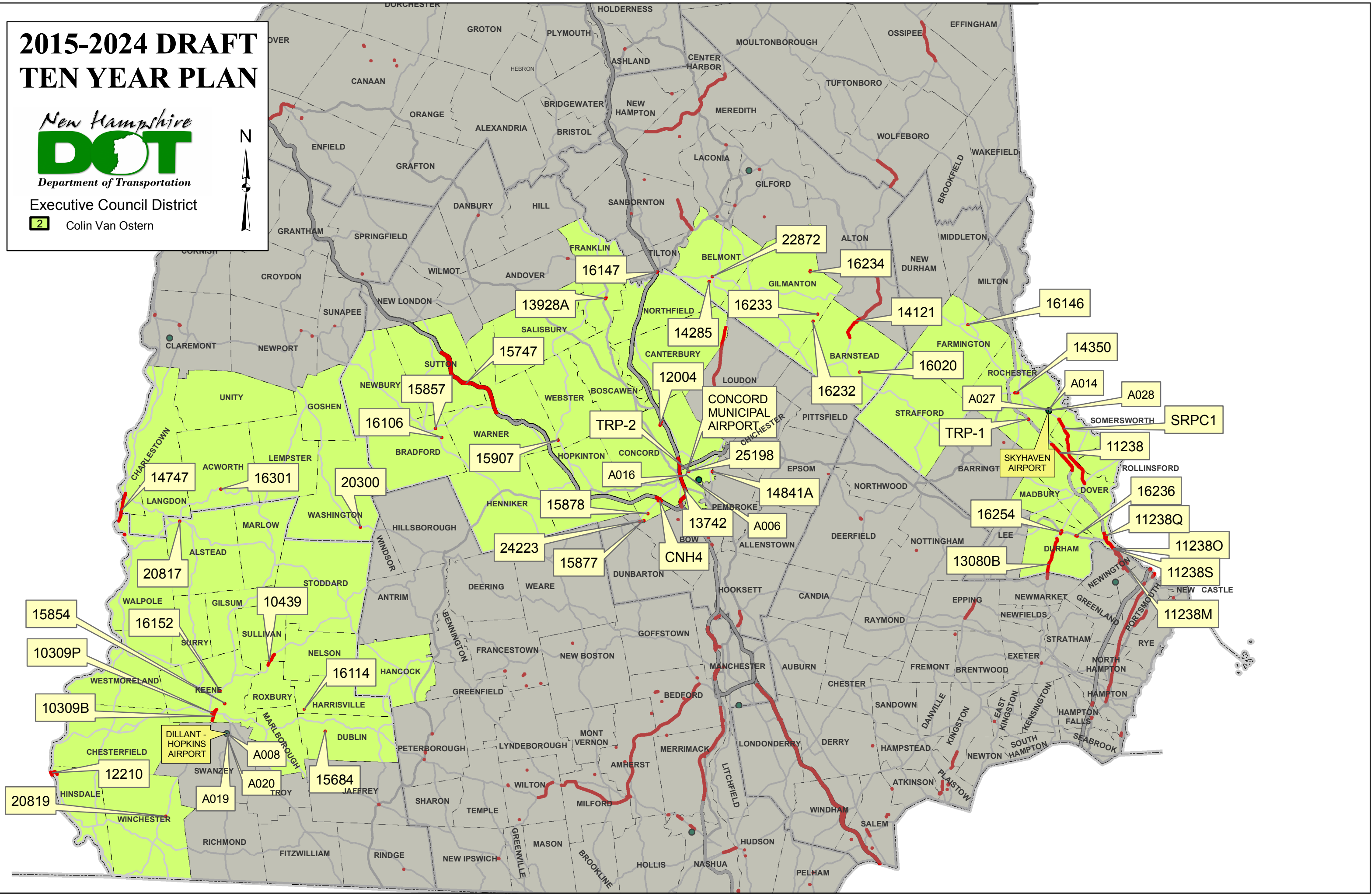


# 2015-2024 DRAFT TEN YEAR PLAN



Executive Council District

2 Colin Van Ostern



ECD	Town	State #	Description	Organization Name	
2	ACWORTH	16301	NH 123A, REPLACE BRIDGE OVER BOWERS BROOK - 113/064 {Red List} [Oct 2005 Flood] (Bridge R	Upper Valley-Lake Sunapee Regional Planning Co	
	ALSTEAD	20817	NH 123A, REPLACE SINGLE SPAN BRIDGE OVER WARREN BROOK - 073/163 {Red List}	Southwest Region Planning Commission	
	BARNSTEAD	16020	HANNAH NUTTER ROAD, BRIDGE REPLACEMENT OVER BIG RIVER - 149/073 [SAB*4216] {State Aid	Lakes Region Planning Commission	
	BARNSTEAD - ALTON	14121	NH 28, RECONSTRUCTION FROM THE ALTON CIRCLE SOUTH APPROXIMATELY 7.0 MILES TO THE	Lakes Region Planning Commission	
	BELMONT	14285	SHAKER ROAD, BRIDGE REHABILITATION OVER PUMPING STATION BROOK - 098/062 {Red List}	Lakes Region Planning Commission	
			22872	CHURCH STREET, BRIDGE REHABILITATION CHURCH STREET OVER TIOGA RIVER - 103/072 [SAB*	Lakes Region Planning Commission
	BOW - CONCORD	13742	I-93, WIDEN FROM I-89 TO BETWEEN EXITS 15 AND 16. BRIDGE #S: 203/090, 139/116, 163/106, 184/1	Central New Hampshire Planning Commission	
	BRADFORD	15857	BREEZY HILL ROAD, BRIDGE REPLACEMENT OVER WARNER RIVER - 161/145 {Red List} [SAB*4216	Central New Hampshire Planning Commission	
		16106	BREEZY HILL ROAD, BRIDGE REPLACEMENT OVER MASSASECUM RIVER - 170/129 {Red List} [SAB	Central New Hampshire Planning Commission	
	CONCORD	12004	SEWALLS FALLS ROAD, REPLACE BRIDGE OVER MERRIMACK RIVER - 070/117 [Section 1702 - Desi	Central New Hampshire Planning Commission	
		15877	HOOKSETT TURNPIKE (Local Rd), BRIDGE REPLACEMENT OVER BELA BROOK - 200/015 {Red List}	Central New Hampshire Planning Commission	
		15878	BIRCHDALE ROAD, BRIDGE REPLACEMENT OVER BELA BROOK - 193/027 [SAB*4216] {State Aid Bri	Central New Hampshire Planning Commission	
		CNH4	I-89, NH 13 (Clinton St), EXIT 2 NB & SB RAMP INTERSECTION IMPROVEMENTS	Central New Hampshire Planning Commission	
		TRP2	TURNPIKES, TURNPIKE ADMINISTRATION BUILDING	Central New Hampshire Planning Commission	
		A006	CONCORD MUNICIPAL AIRPORT, Modernization - apron and runway improvements	Central New Hampshire Planning Commission	
		A016	CONCORD MUNICIPAL AIRPORT, Preservation - apron, hangar, and taxiway preservation. Terminal b	Central New Hampshire Planning Commission	
	CONCORD - PEMBROKE	14841 A	NORTH PEMBROKE ROAD, BRIDGE REHABILITATION OVER SOUCCOOK RIVER - 183/156	Central New Hampshire Planning Commission	
	Dover to Rochester	SRPC1	NH 108, NH 108 Dover to Rochester (U-Alternative) Study	Strafford Regional Planning Commission	
	DUBLIN	15684	CHARCOAL ROAD, BRIDGE REPLACEMENT OVER CHARCOAL BROOK - 085/103 (SAB) {Red List}	Southwest Region Planning Commission	
	DURHAM	16236	US 4, BRIDGE REPLACEMENT & APPROACHES OVER BUNKER CREEK - 145/116. BRIDGE IS 40 ON	Strafford Regional Planning Commission	
		16254	US 4 / NH 108, INTERSECTION IMPROVEMENTS AT THE US 4 RAMP INTERSECTION WITH NH 108.	Strafford Regional Planning Commission	
	DURHAM - NEWMARKET	13080 B	NH 108, CONSTRUCT 4' BIKE SHOULDERS FROM OYSTER RIVER BR. TO DURHAM / NEWMARKET T	Strafford Regional Planning Commission	
	FARMINGTON	16146	NH 153, REPLACE BRIDGE OVER COCHECO RIVER - 096/140 {Red List}	Strafford Regional Planning Commission	
	FRANKLIN	13928 A	US 3, UPGRADE AT INTERSECTION OF INDUSTRIAL PARK DRIVE IN FRANKLIN [Section 1702 - Desi	Lakes Region Planning Commission	
	GILMANTON	16232	STAGE ROAD, BRIDGE REPLACEMENT - 106/041 [SAB*4216] {State Aid Bridge Program}	Lakes Region Planning Commission	
		16233	STAGE ROAD, BRIDGE REPLACEMENT OVER NIGHTHAWK HOLLOW BROOK - 122/041 [SAB*4216] {	Lakes Region Planning Commission	
		16234	CRYSTAL LAKE ROAD, BRIDGE REHAB / REPLACEMENT OVER NELSON BROOK - 174/094 [SAB*421	Lakes Region Planning Commission	
		16114	SOUTH ROAD, BRIDGE REPLACEMENT OVER MINNEAWA BROOK - 061/060 {Red List} [SAB*4216]	Southwest Region Planning Commission	
	HARRISVILLE				
	HINSDALE, NH - BRATTLEBORO, VT	12210	NH 119, REPLACE 2 BRIDGES OVER CONNECTICUT RIVER - 041/040 & 042/044, BY CONSTRUCTING	Southwest Region Planning Commission	
	KEENE	10309 B	WINCHESTER STREET, RECONSTRUCTION FROM NH 101 ROUNDABOUT NORTH TO PEARL STREE	Southwest Region Planning Commission	
		15854	ROXBURY STREET, BRIDGE REPLACEMENT OVER BEAVER BROOK - 140/077 {Red List} [SAB*4216]	Southwest Region Planning Commission	
		16152	NH 9 & NH 10, BRIDGE REHABILITATION - 129/099 {Red List}	Southwest Region Planning Commission	
	KEENE - SWANZEY	10309 P	NH 9/10/12/101, CONSTRUCTION OF MULTI-USE TRAIL BRIDGE OVER NH 12/101, AND MITIGATION	Southwest Region Planning Commission	
		A008	DILLANT-HOPKINS AIRPORT, Expansion - apron & hangar improvements	Southwest Region Planning Commission	
		A019	DILLANT-HOPKINS AIRPORT, Modernization - taxiway improvements.	Southwest Region Planning Commission	
		A020	DILLANT-HOPKINS AIRPORT, Preservation - runway reconstruction and hazard beacon rehabilitation	Southwest Region Planning Commission	
	NEWINGTON - DOVER	11238	NH 16 / US 4 / SPLDG TPK, WIDEN TURNPIKE INCLUDING LITTLE BAY BRIDGES FROM GOSLING RC	Strafford Regional Planning Commission	
		11238 M	NH 16 / US 4 / SPLDG TPK, EXIT 3 & 4 INTERCHANGE CONSTRUCTION AND MAINLINE TURNPIKE C	Strafford Regional Planning Commission	
		11238 O	NH 16 / US 4 / SPLDG TPK, REHABILITATION OF EXISTING LITTLE BAY BRIDGE & BRIDGE APPROA	Strafford Regional Planning Commission	
		11238 Q	NH 16, US 4 & SPAULDING TURNPIKE, EXIT 6 INTERCHANGE AND MAINLINE TURNPIKE CONSTRUC	Strafford Regional Planning Commission	
		11238 S	SPAULDING TURNPIKE / LITTLE BAY BRIDGES, GENERAL SULLIVAN BRIDGE REHABILITATION	Strafford Regional Planning Commission	
	NORTHFIELD - TILTON	16147	I-93, REHABILITATE BRIDGES OVER WINNIPESAUKEE RIVER AND RAILROAD DECK REPLACEMENT	Lakes Region Planning Commission	
	ROCHESTER	14350	NH 202A (WALNUT STREET), INTERSECTION IMPROVEMENTS TO IMPROVE SAFETY THROUGH STF	Strafford Regional Planning Commission	
		A014	SKYHAVEN AIRPORT, Expansion - runway and apron improvements	Strafford Regional Planning Commission	
		A027	SKYHAVEN AIRPORT, Modernization - wildlife hazard fencing	Strafford Regional Planning Commission	
		A028	SKYHAVEN AIRPORT, Preservation - apron and parking lot improvements. Master planning and wild	Strafford Regional Planning Commission	
	ROXBURY - SULLIVAN	10439	NH 9, RECONSTRUCT SHOULDERS & WIDEN FROM EAST SULLIVAN, SOUTH 2.04 MI, INCLUDING BI	Southwest Region Planning Commission	
	WALPOLE - CHARLESTOWN	14747	NH 12, RECONSTRUCTION FROM MAIN STREET IN WALPOLE TO NH 12A IN CHARLESTOWN, REMO	Southwest Region Planning Commission	
				Upper Valley-Lake Sunapee Regional Planning Co	
	WARNER	15907	NH 127, BRIDGE REPLACEMENT OVER WARNER RIVER - 254/180 {Red List}	Central New Hampshire Planning Commission	
	WARNER - SUTTON	15747	I-89, PAVEMENT REHABILITATION FROM EXIT 9 TO EXIT 10 (7 MILES) [4R]	Central New Hampshire Planning Commission	
WASHINGTON	20300	DOLE SCHOOL ROAD, BRIDGE REPLACEMENT OVER HIGHLAND LAKE OUTLET - 165/041 {Red List}	Upper Valley-Lake Sunapee Regional Planning Co		
WINCHESTER	20819	NH 10, REHABILITATION OR REPLACEMENT OF 12' CONCRETE BOX OVER FOREST LAKE OUTLET	Southwest Region Planning Commission		
Dover & Rochester	TRP1	Spaulding Turnpike, Improvements to the Dover & Rochester toll plazas	Strafford Regional Planning Commission		