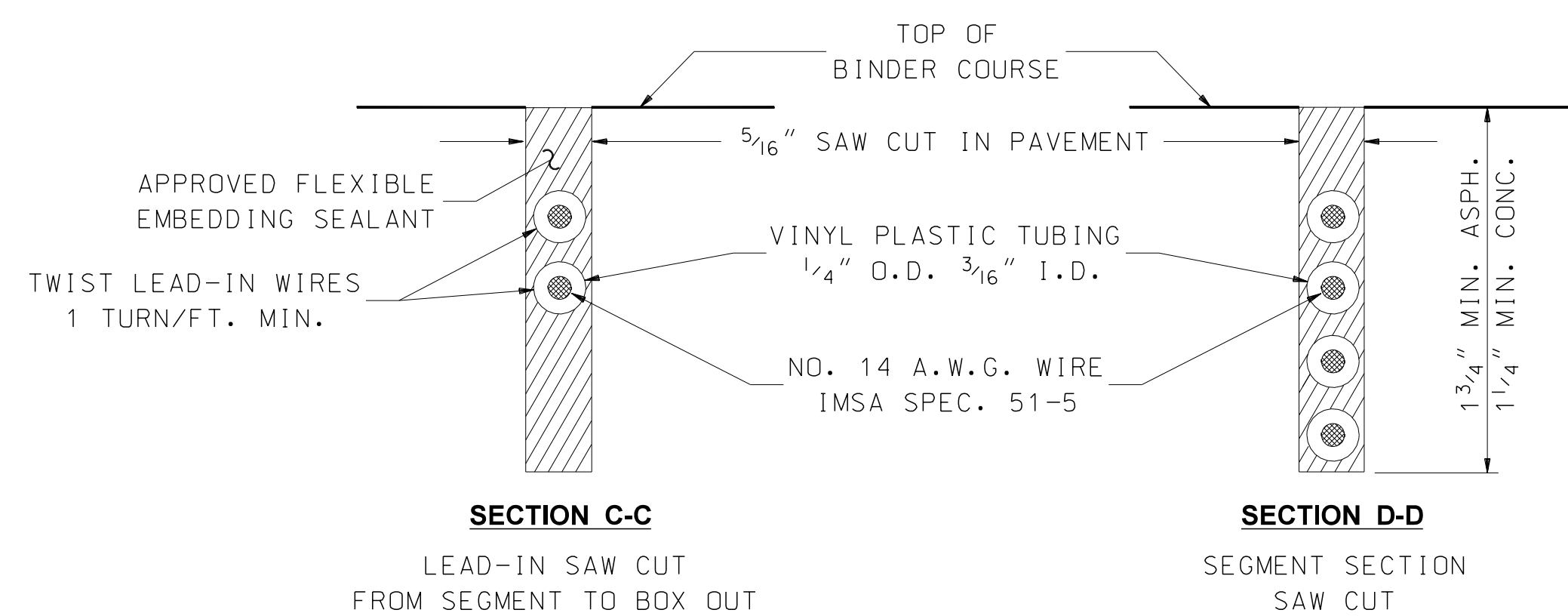
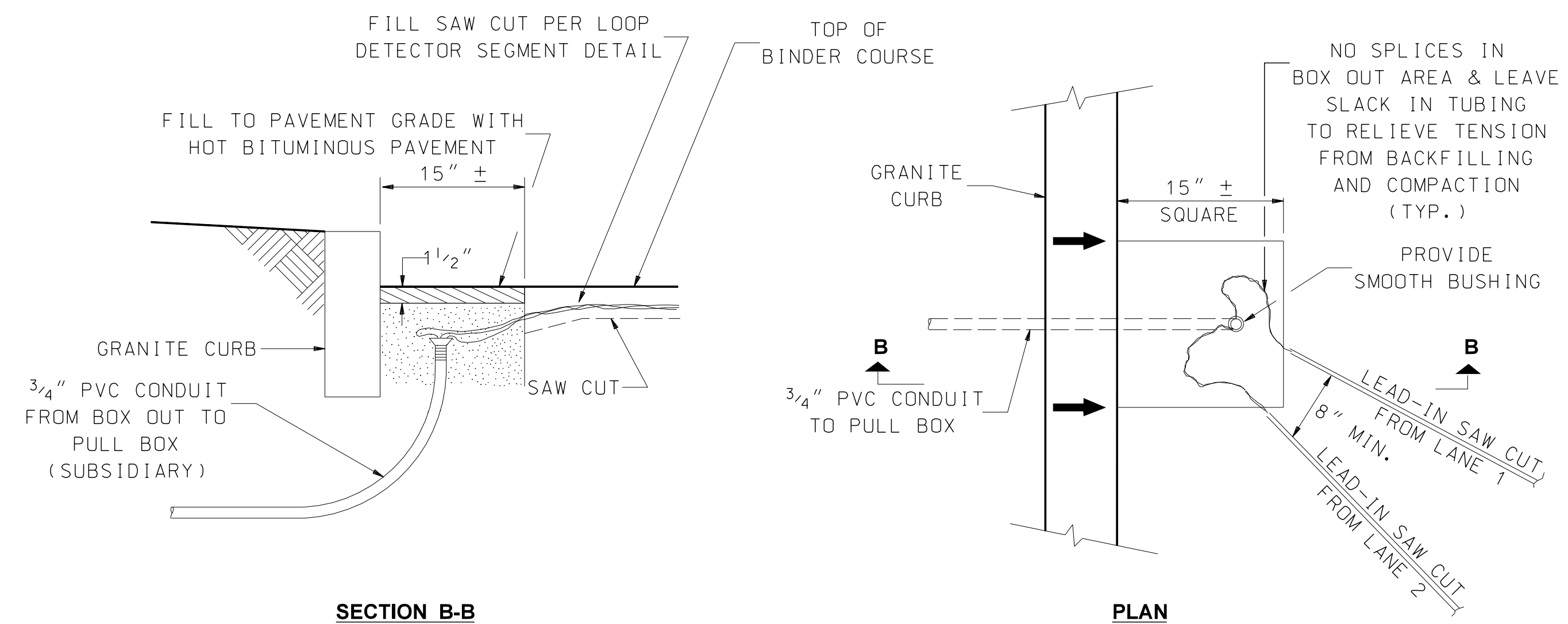
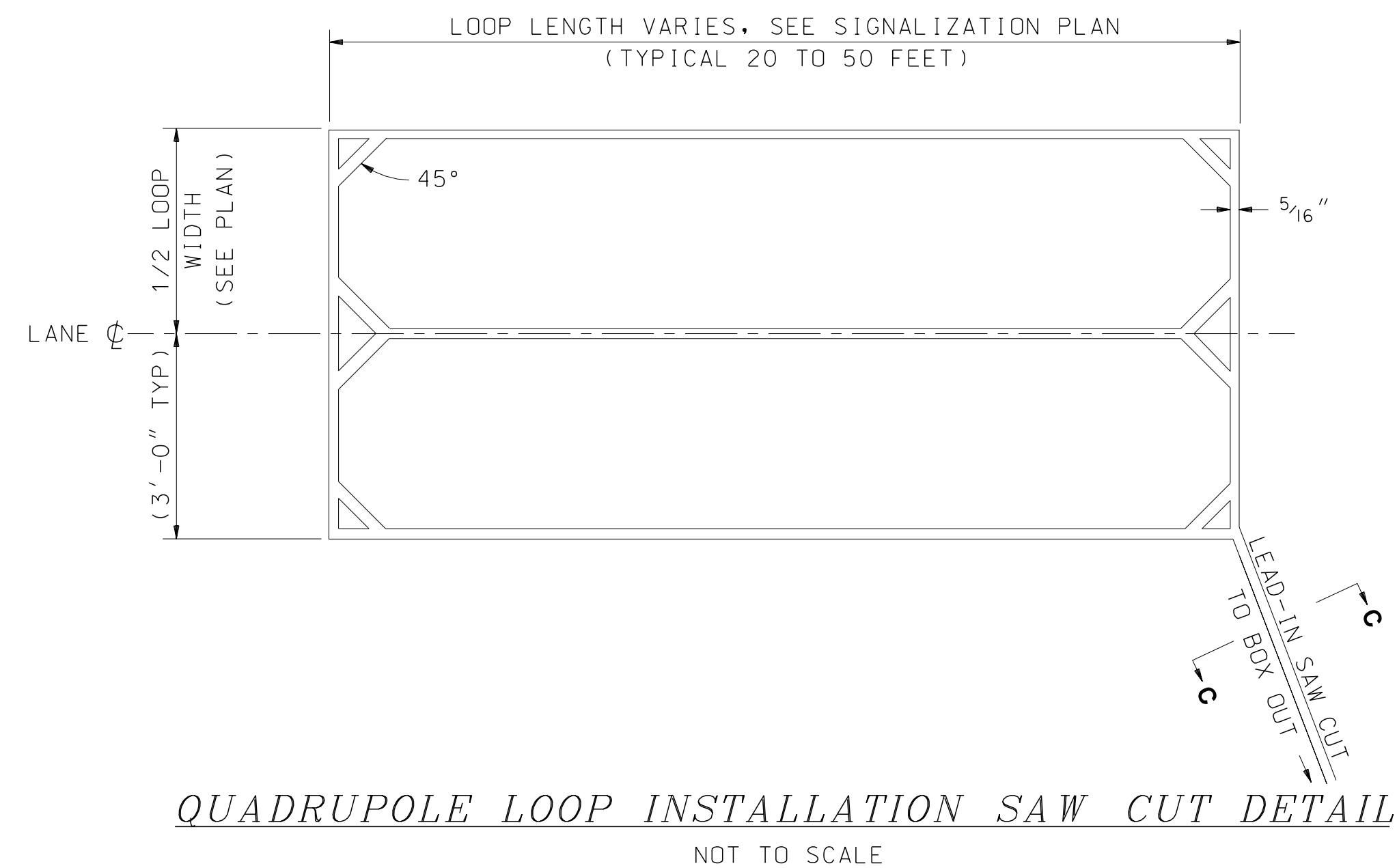
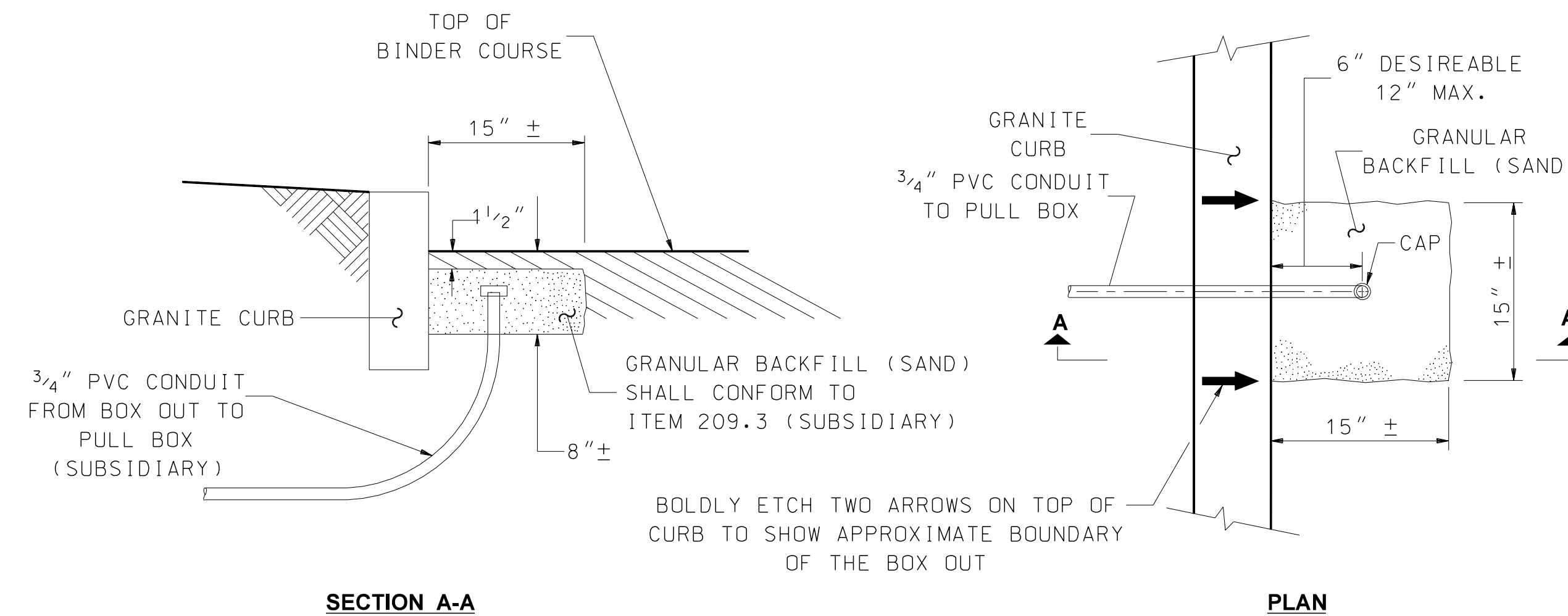
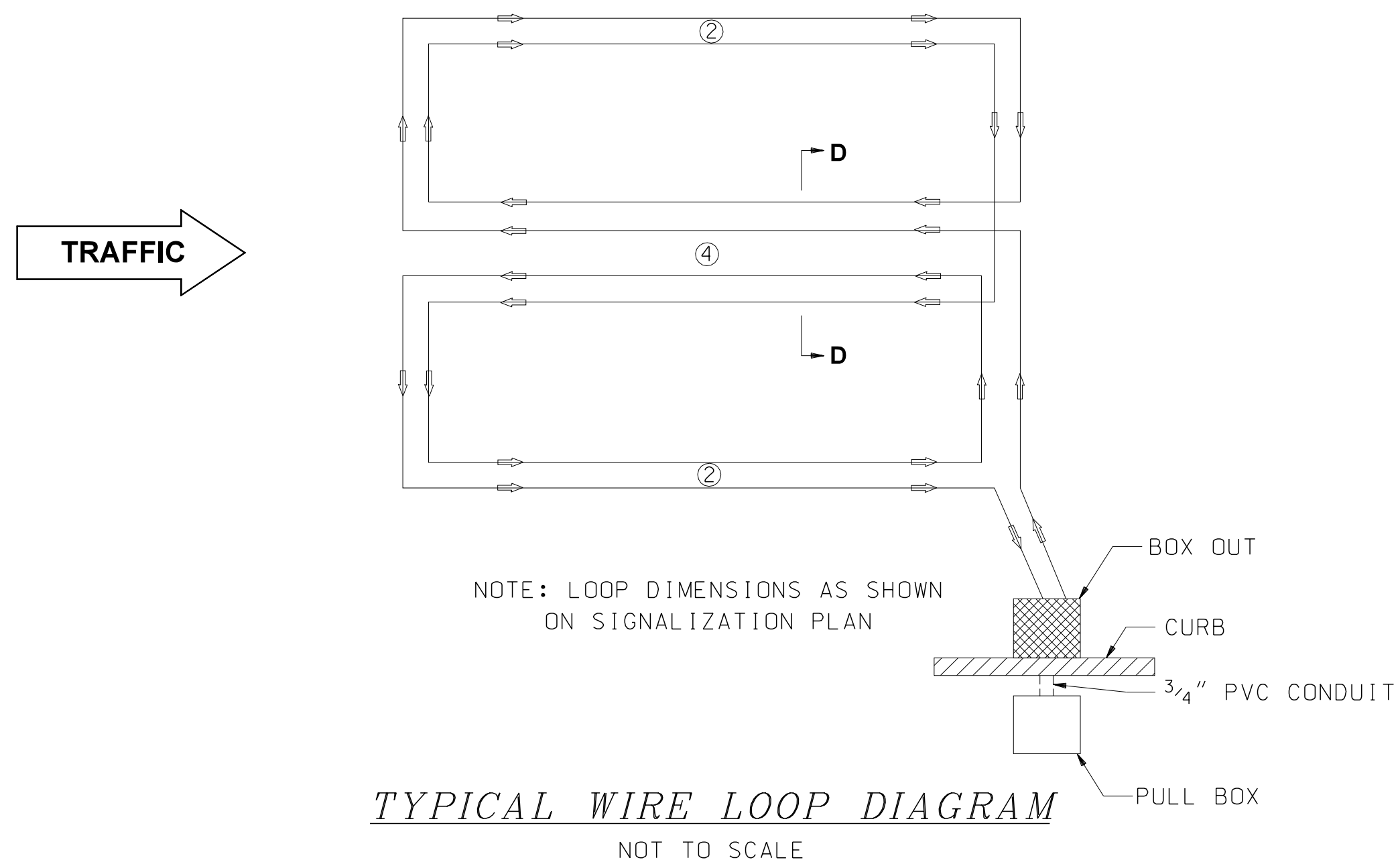


REVISION DATE
07-13-01
02-26-10
01-17-19

\*.DGN FILE NAME  
TS-5



**GENERAL NOTES**

1. MAXIMUM OF TWO LEAD-IN PAIRS PER 3/4" CONDUIT.
2. TAPE TUBING 3" ON EACH SIDE OF THE SAW CUT BOX OUT BOUNDARY WITH ELECTRICAL TAPE.
3. AFTER TUBING IS INSTALLED, FILL CONDUIT WITH CRUMPLED PAPER AND SEAL WITH PLIABLE DUCT SEALANT.
4. USE ITEM 209.3 - GRANULAR BACKFILL (SAND) (SUBSIDIARY) TO COVER AND SUPPORT THE VINYL PLASTIC TUBING.

TRAFFIC SIGNAL STANDARD  
QUADRUPOLE LOOP DETECTOR  
2-4-2 TURNS