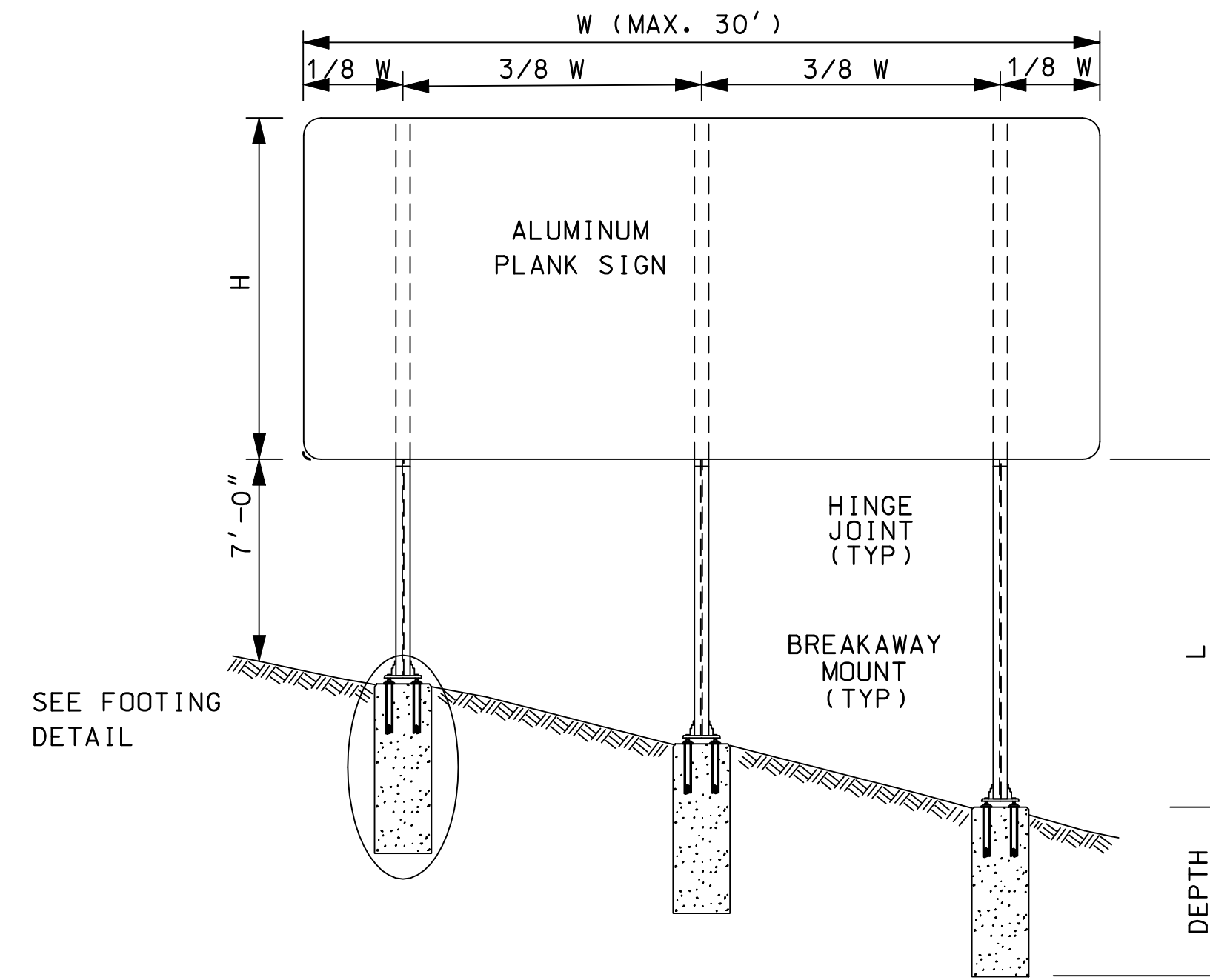


PROCEDURE FOR SELECTING BEAM SECTIONS

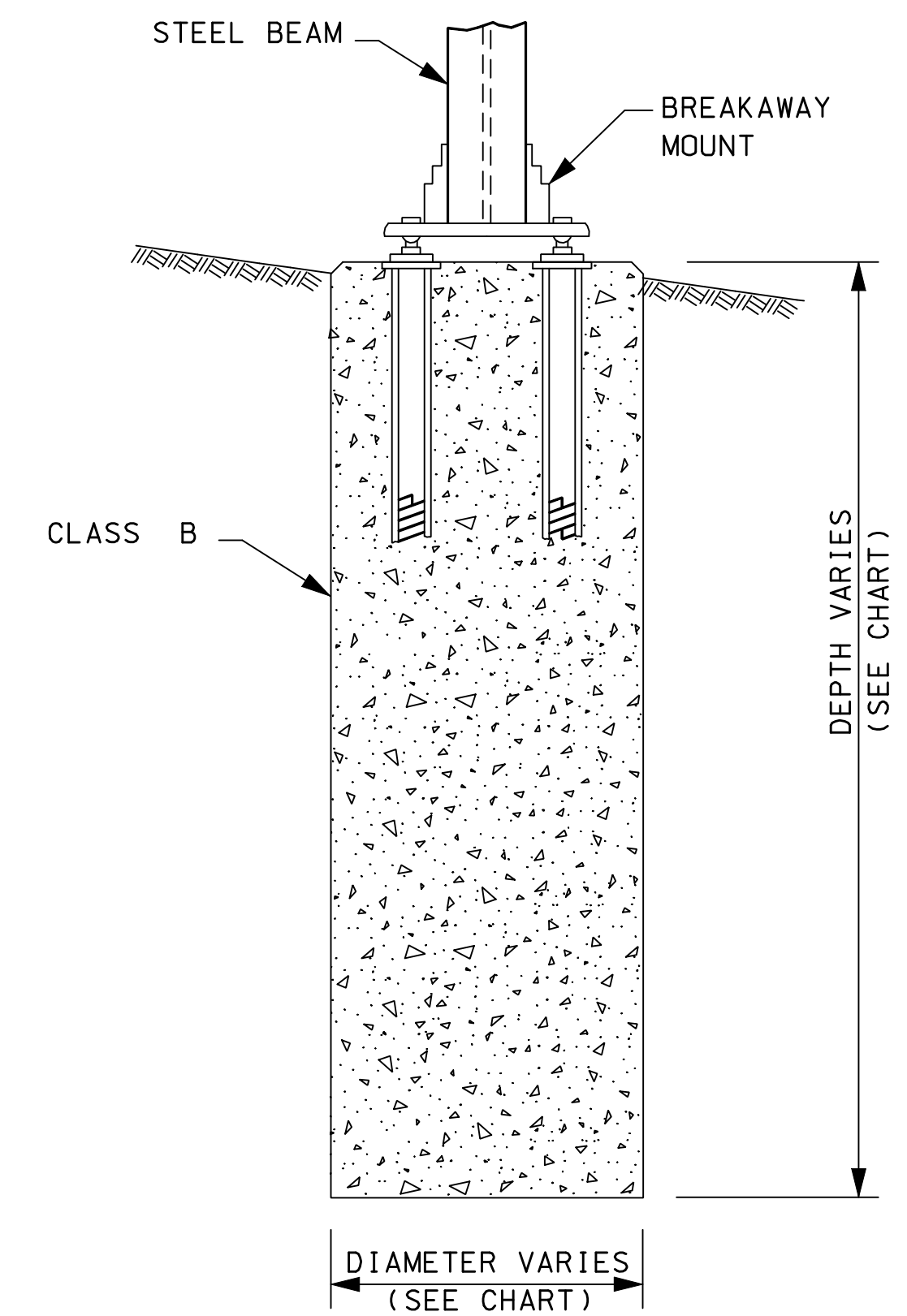
- DETERMINE VALUES FOR W, H, & L AS INDICATED IN DRAWING
 W = MAXIMUM WIDTH OF REQUIRED SIGN
 H = MAXIMUM HEIGHT OF REQUIRED SIGN
 L = MAXIMUM DISTANCE BETWEEN TOP OF FOOTING AND BOTTOM OF REQUIRED SIGN.
- FOR SIGN SIZES BETWEEN THOSE VALUES IN THE TABLE, USE NEXT HIGHEST
- ENTER TABLE WITH MAXIMUM VALUE OF "L" AND REQUIRED VALUES OF "W" AND "H" FOR SELECTION OF APPROPRIATE BEAM SELECTION.

GENERAL NOTES

1. SIGNS SHALL BE PROVIDED FOR LOCATIONS SPECIFIED ON THE PLANS OR AS DIRECTED BY THE ENGINEER. SEE SIGN TEXT LAYOUT SHEETS AND PLANS FOR SIGN SIZES AND APPROXIMATE LOCATIONS.
2. DIMENSIONS, ELEVATIONS, SLOPES, AND SITUATIONS SHOWN ARE FOR ILLUSTRATIVE PURPOSES ONLY. ACTUAL CASES WILL DEPEND ON FIELD CONDITIONS.
3. WHEN TWO OR MORE INDEPENDENT SIGNS ARE MOUNTED AS A SINGLE INSTALLATION, THE POST SUPPORTS SHALL BE CALCULATED WITH THE TOTAL AREA OF THE SIGNS BEING CONSIDERED AS ONE UNIT, INCLUDING AN ALLOWANCE FOR A 6" VERTICAL SPACE BETWEEN THE SIGNS.
4. POST LENGTH TO BE DETERMINED BY SIGN SIZE AND LOCATION. EXACT FIELD LOCATION TO BE DETERMINED BY THE ENGINEER.
5. THE MINIMUM HORIZONTAL CLEARANCE TO THE NEAR EDGE OF THE SIGN OF ANY MULTIPLE POST NON-BREAKAWAY MOUNT SIGN SHALL BE 7'-0" MIN. FROM FACE OF BEAM GUARDRAIL. OTHER TYPES OF GUARDRAIL OR BARRIER MAY REQUIRE A DIFFERENT OFFSET.
6. SEE STANDARD NO. PS-1 & PS-2 FOR ADDITIONAL INFORMATION.



POST SPACING DETAIL



FOOTING DETAIL

3 POST SIGN													
W	L	H											
		4'	5'	6'	7'	8'	9'	10'	11'	12'	13'	14'	15'
22'	8'	W6x9	W6x9	W6x12	W6x12	W6x15	W6x18	W6x18	W6x18	W6x18	W10x22	W14x30	-
	10'	W6x12	W6x12	W6x15	W6x15	W6x18	W6x18	W6x18	W6x21	W10x22	W12x26	W14x30	-
	12'	W6x12	W6x15	W6x18	W6x18	W6x18	W6x21	W6x21	W6x21	W10x26	W12x26	W14x30	-
	14'	W6x15	W6x18	W6x18	W6x21	W6x21	W6x21	W10x26	W10x26	W10x26	W12x26	W14x30	-
	16'	W6x18	W6x18	W6x21	W6x21	W10x26	W10x26	W10x26	W12x26	W12x26	-	-	-
24'	8'	W6x9	W6x9	W6x12	W6x12	W6x18	W6x18	W6x18	W6x18	W6x21	W10x22	W14x30	-
	10'	W6x12	W6x12	W6x15	W6x18	W6x18	W6x18	W6x18	W10x22	W10x26	W12x26	W14x30	-
	12'	W6x15	W6x15	W6x18	W6x18	W6x21	W6x21	W6x21	W10x26	W10x26	W12x26	W14x30	-
	14'	W6x15	W6x18	W6x18	W6x21	W6x21	W10x26	W10x26	W10x26	W10x26	W12x26	W14x30	-
26'	16'	W6x18	W6x18	W6x21	W6x21	W10x26	W10x26	W10x26	W12x26	-	-	-	-
	8'	W6x9	W6x12	W6x12	W6x12	W6x18	W6x18	W6x18	W6x18	W10x22	W12x26	-	-
	10'	W6x12	W6x15	W6x15	W6x18	W6x18	W6x18	W6x21	W10x22	W12x26	W14x30	-	-
	12'	W6x15	W6x15	W6x18	W6x18	W6x21	W6x21	W6x21	W10x26	W12x26	W14x30	-	-
	14'	W6x15	W6x21	W6x21	W6x21	W6x21	W10x26	W10x26	W10x26	W12x26	W14x30	-	-
28'	16'	W6x18	W6x21	W6x21	W10x26	W10x26	W10x26	W12x26	W12x26	-	-	-	-
	8'	W6x9	W6x12	W6x12	W6x18	W6x18	W6x18	W6x18	W10x22	W12x26	-	-	-
	10'	W6x12	W6x15	W6x18	W6x18	W6x18	W6x18	W10x22	W10x22	W12x26	W14x30	-	-
	12'	W6x15	W6x15	W6x18	W6x18	W6x21	W6x21	W10x26	W10x26	W12x26	W14x30	-	-
30'	14'	W6x18	W6x18	W6x21	W6x21	W10x26	W10x26	W10x26	W12x26	-	-	-	-
	16'	W6x18	W6x21	W6x21	W10x26	W10x26	W10x26	W12x26	-	-	-	-	-
	8'	W6x9	W6x12	W6x15	W6x18	W6x18	W6x18	W6x18	W10x22	W10x26	W12x26	-	-
	10'	W6x12	W6x15	W6x18	W6x18	W6x18	W6x18	W10x22	W12x26	W14x30	-	-	-

POST SIZE	FOOTING	
	DEPTH	DIAMETER
W6x9	6'	24"
W6x12	6'	24"
W6x15	7'-6"	24"
W8x18	7'-6"	30"
W8x21	8'-6"	30"
W10x22	8'-6"	36"
W10x26	8'-6"	36"
W12x26	8'-6"	36"
W14x30	9'	36"

SIGNING STANDARD
STEEL BEAM DETAILS
BREAKAWAY

STANDARD NO. PS-8

REVISION DATE
07-13-2001
02-26-2010

*DGN FILE NAME
 PS-8

STANDARD PLANS



STANDARD NO. PS-8