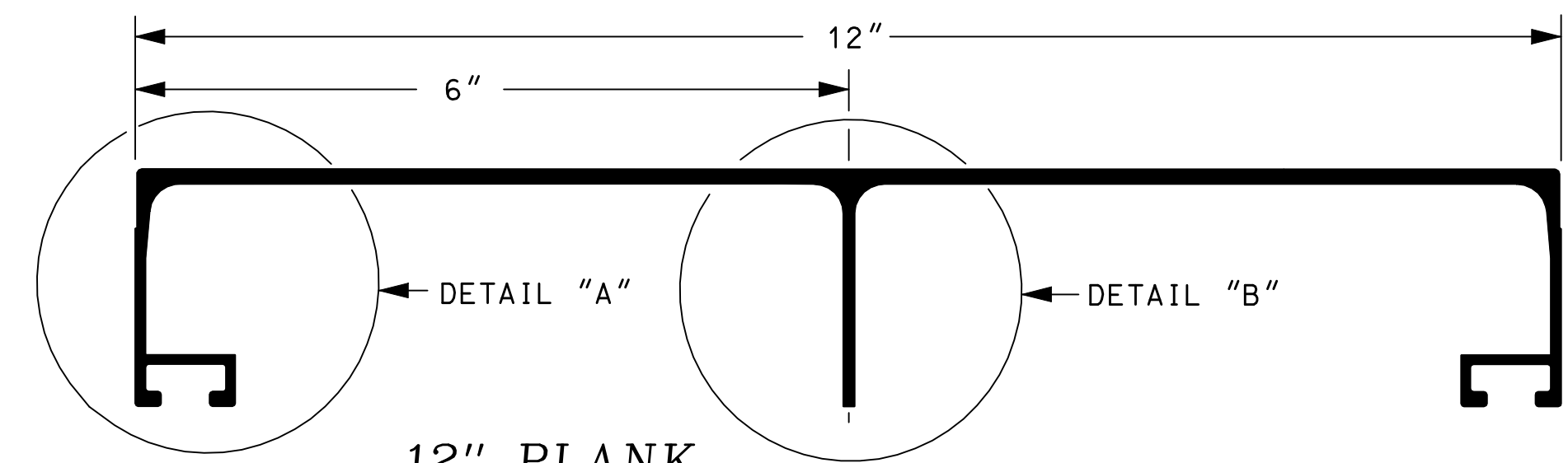
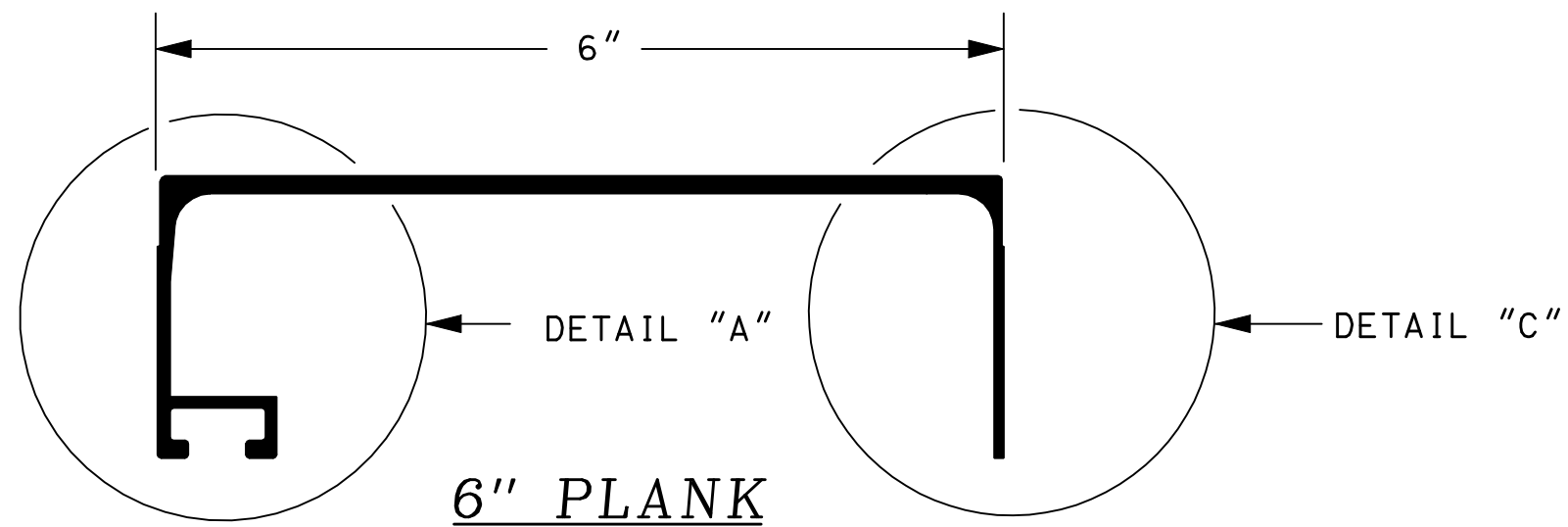


REVISION DATE
07-13-2001
02-26-2010

\*DGN FILE NAME  
PS-2

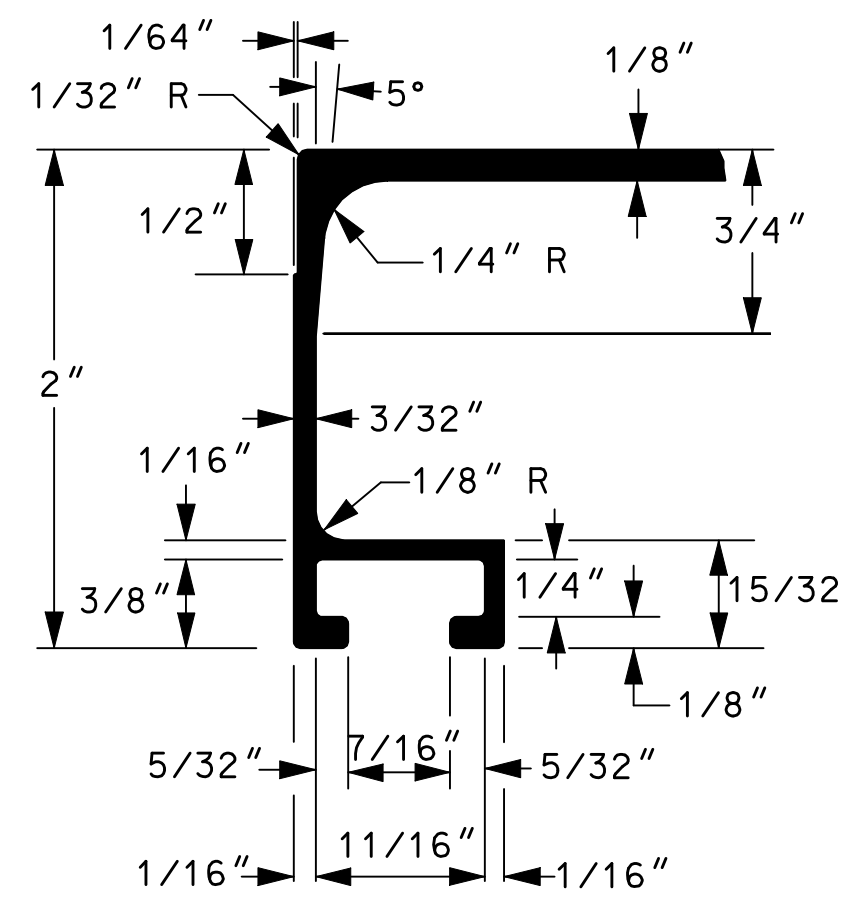


12" PLANK

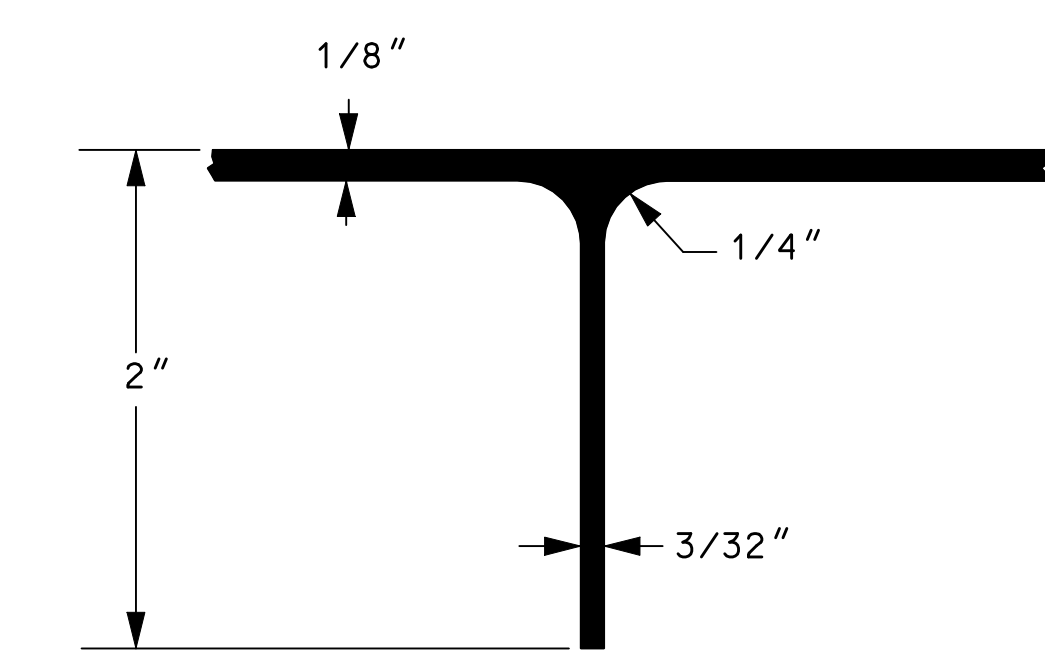


6" PLANK

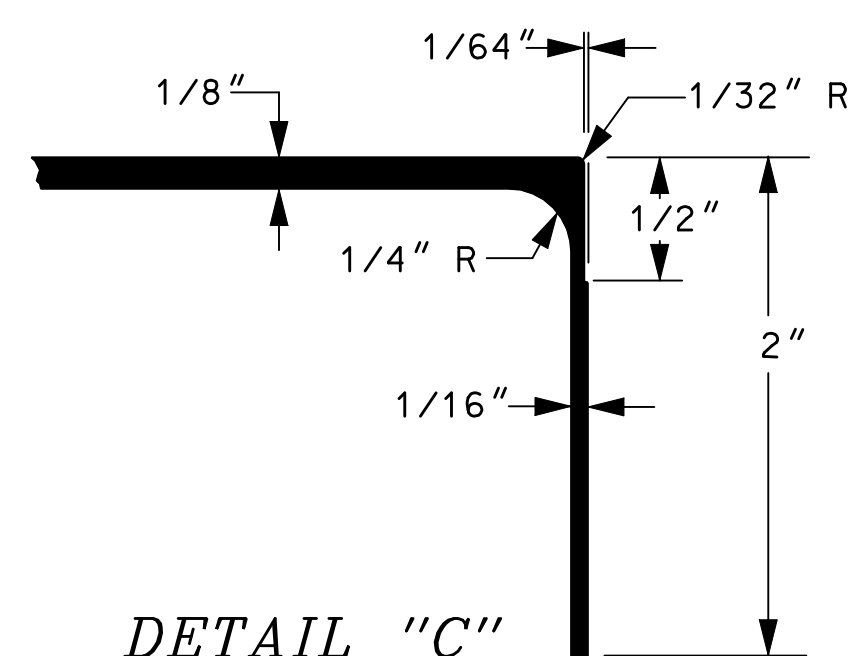
EXTRUDED ALUMINUM SIGN PLANK



DETAIL "A"

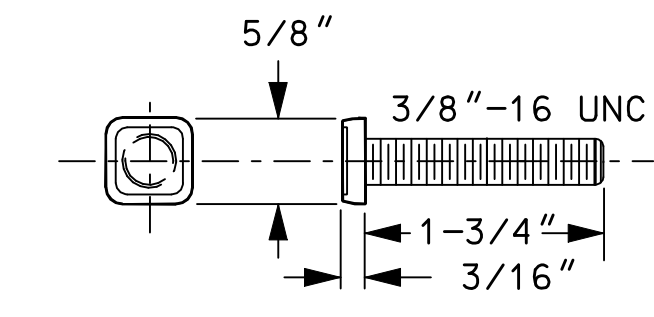


DETAIL "B"

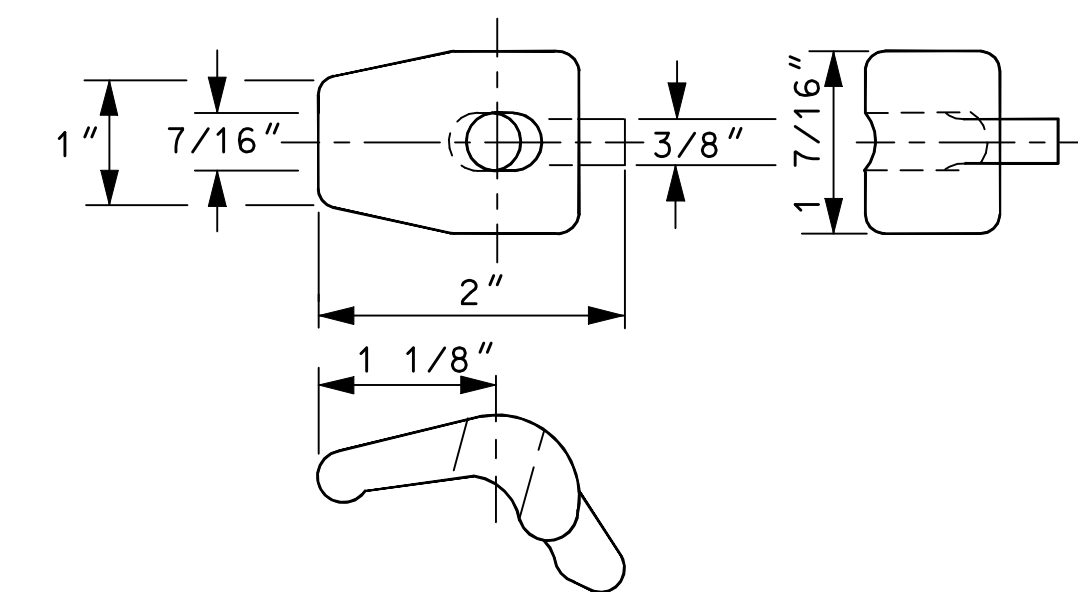


DETAIL "C"

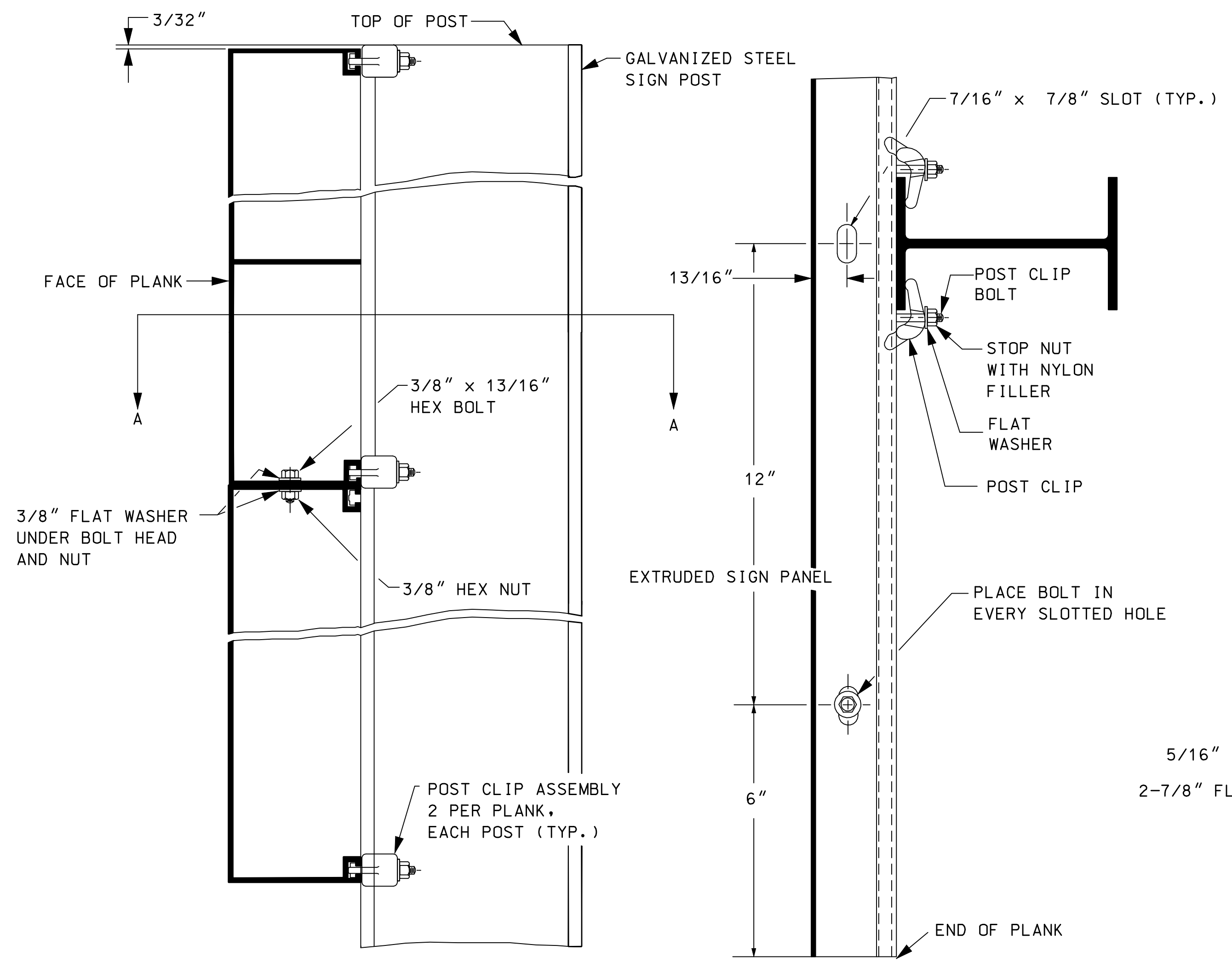
STIFFENER DETAILS



POST CLIP BOLT

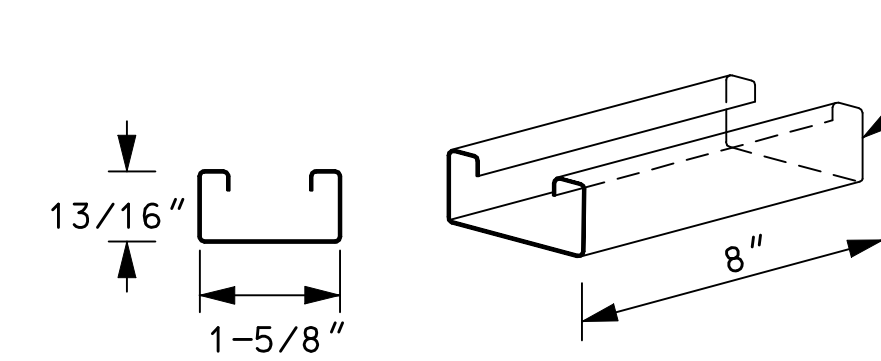


POST CLIP

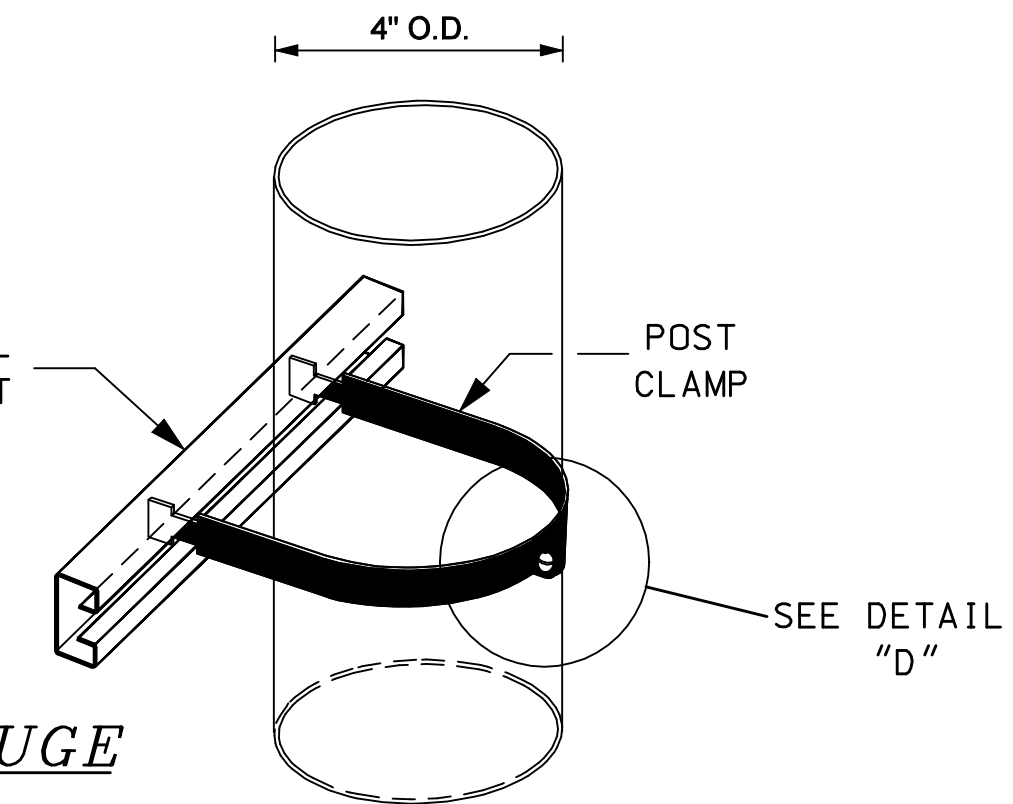


END VIEW

SECTION A-A



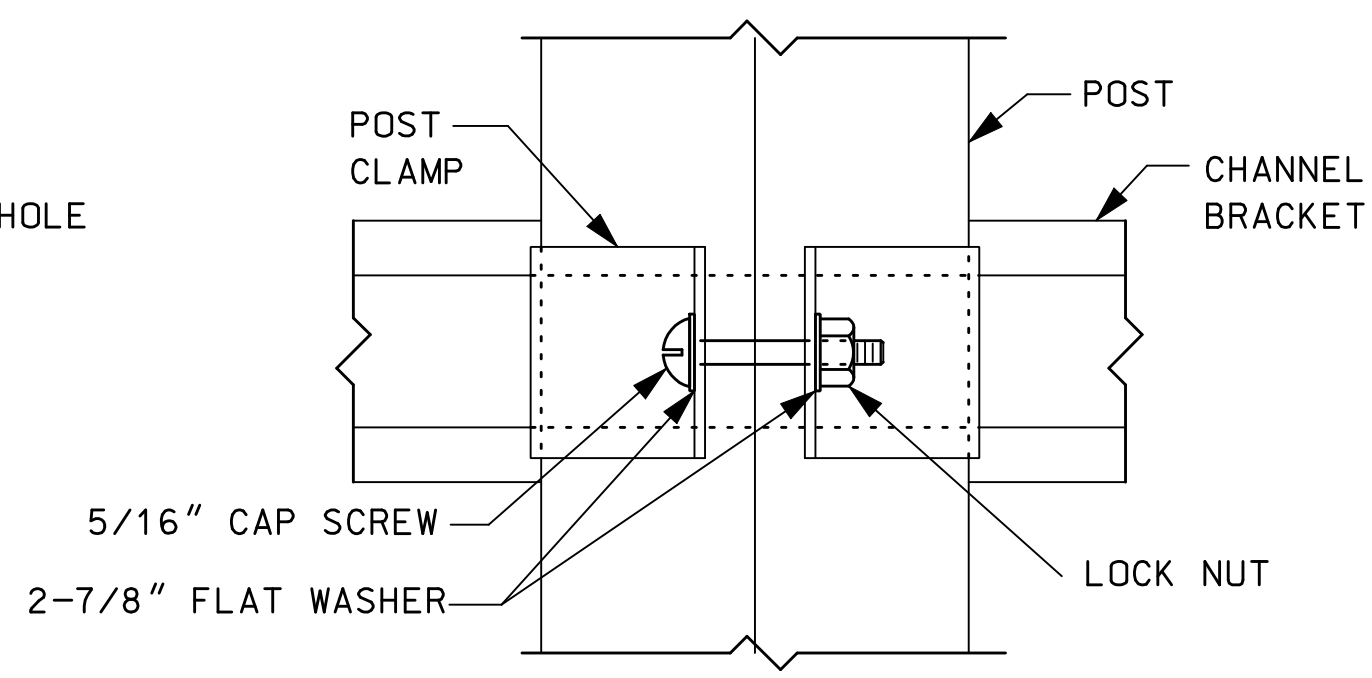
CHANNEL BRACKET 14 GAUGE



POST CLAMP 4" DIA. 11 GAUGE

POST CLAMP ASSEMBLIES

1. SEE SPECIFICATION 615.2.7.3 FOR ADDITIONAL INFORMATION REGARDING THE CHANNEL BRACKET AND POST CLAMP.
2. USE 5/16" CAP SCREW WITH 2-7/8" O.D. WASHERS AND LOCKNUT FOR CLAMP CONNECTION.
3. ALL HARDWARE SHALL BE STAINLESS STEEL.



DETAIL "D"

SIGNING STANDARD

ALUMINUM PLANK DETAILS