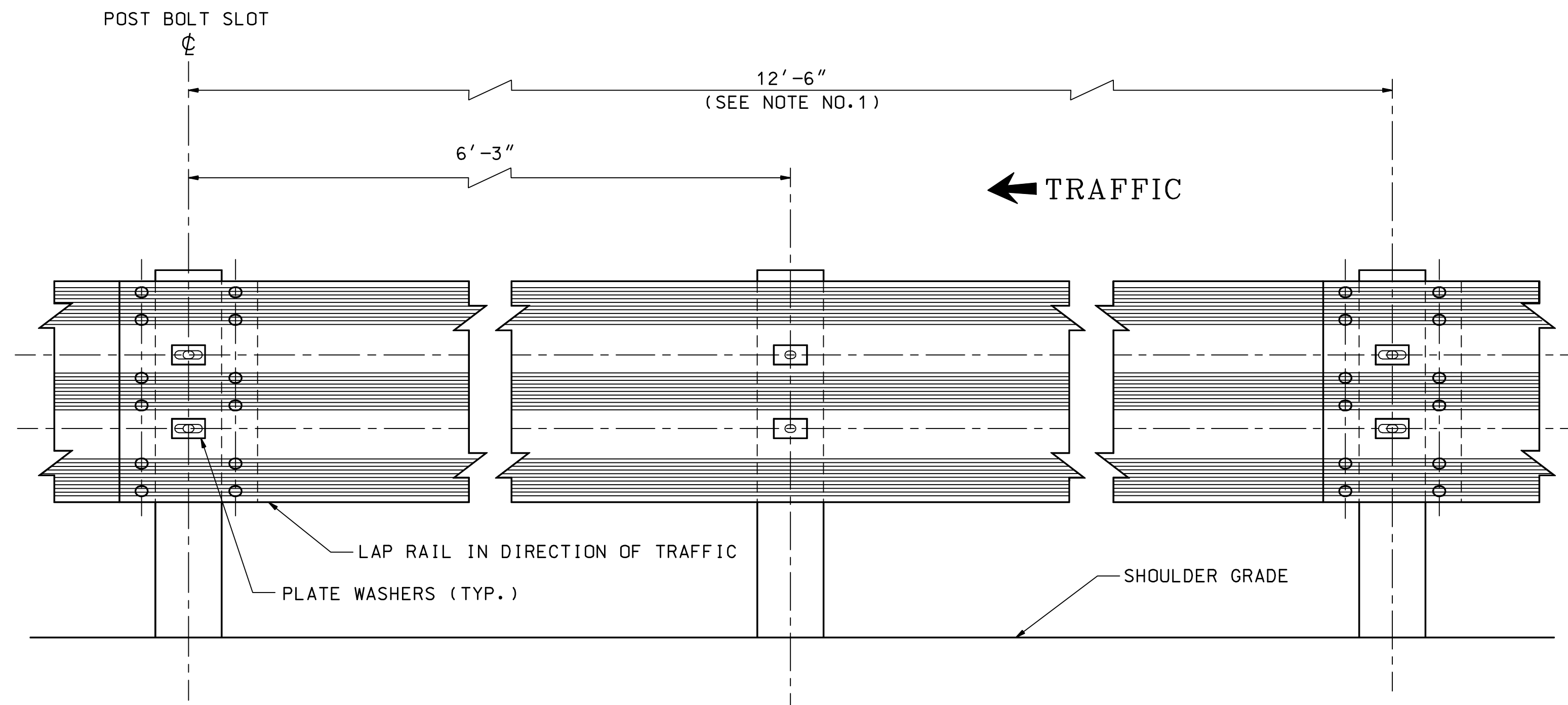
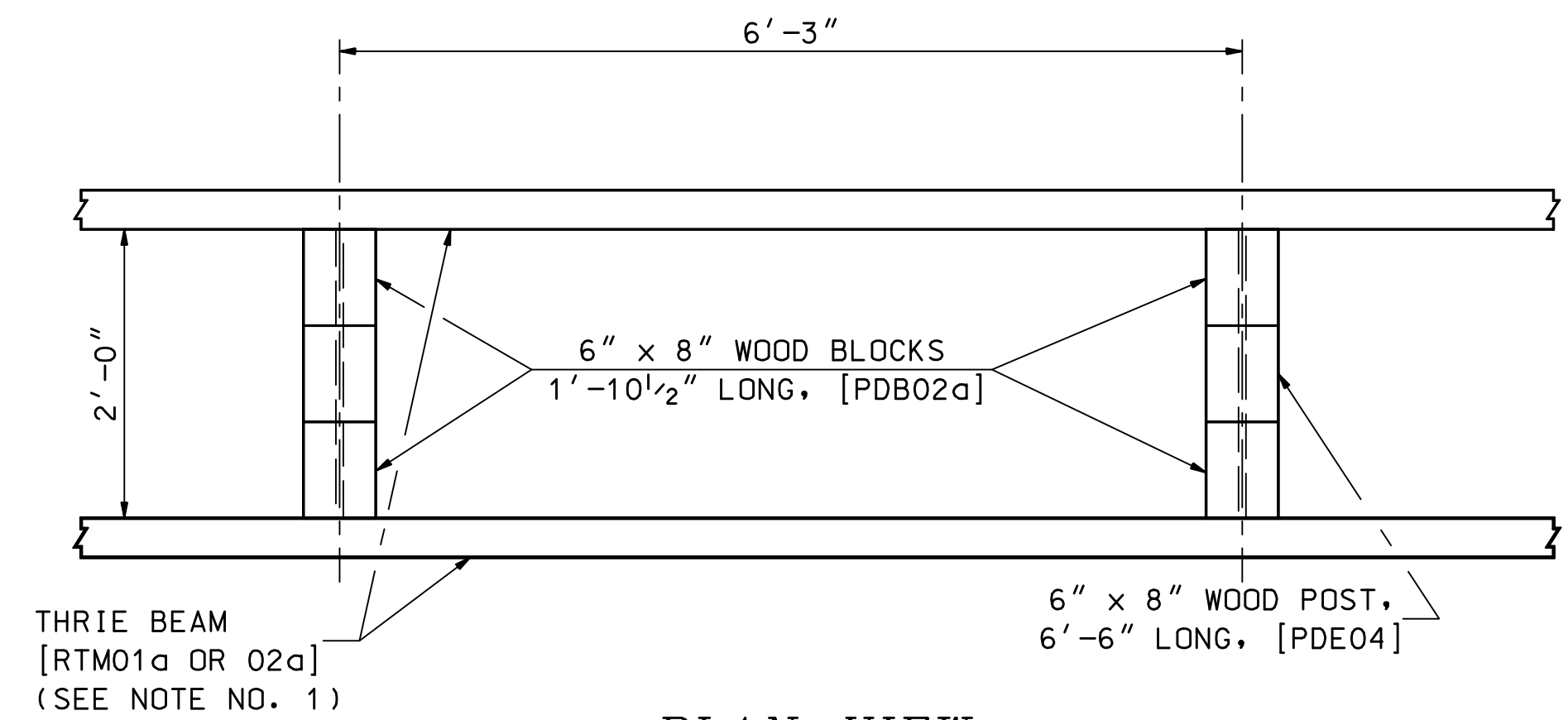


REVISION DATE
07-13-2001
06-16-2010
11-05-2010

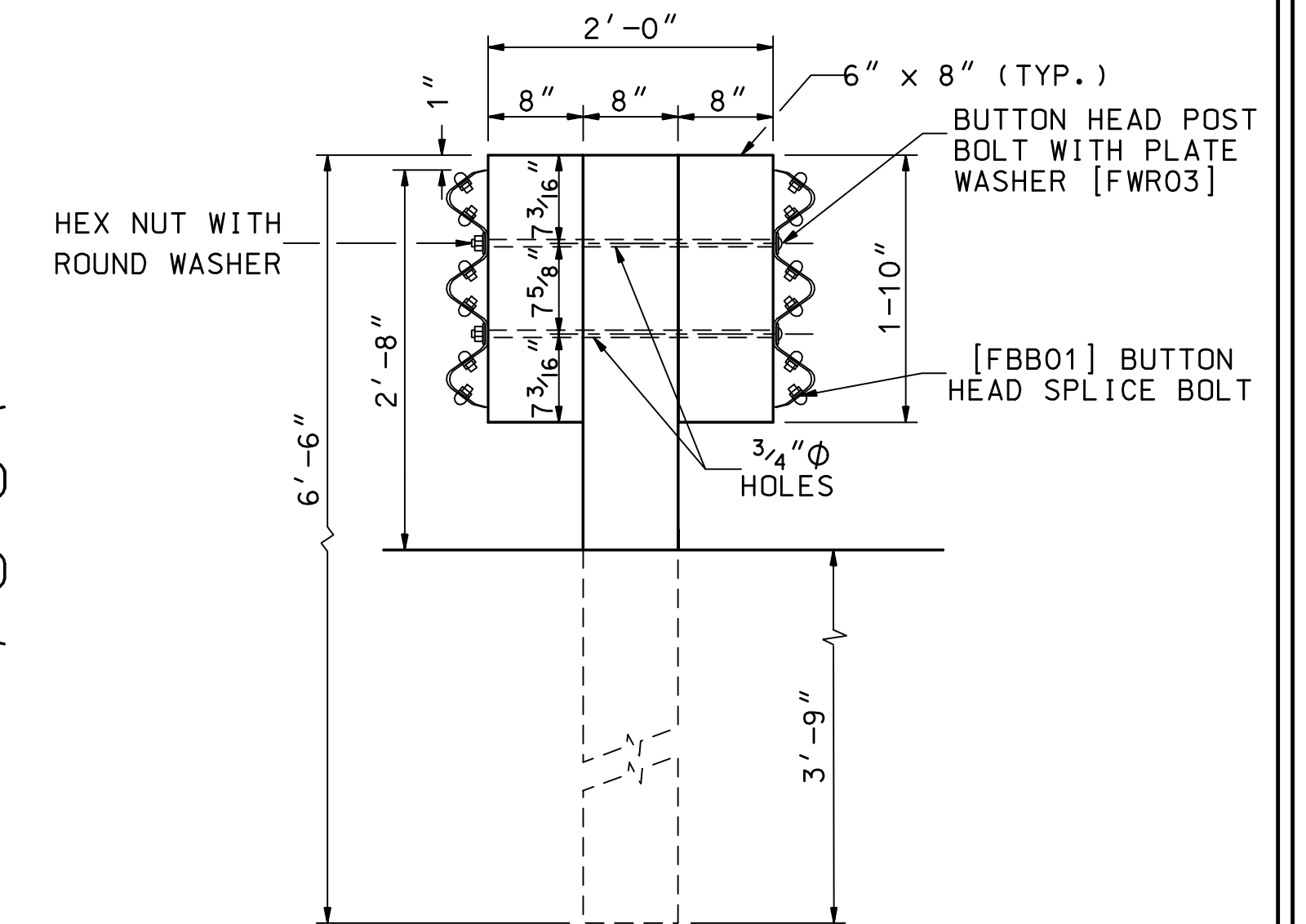
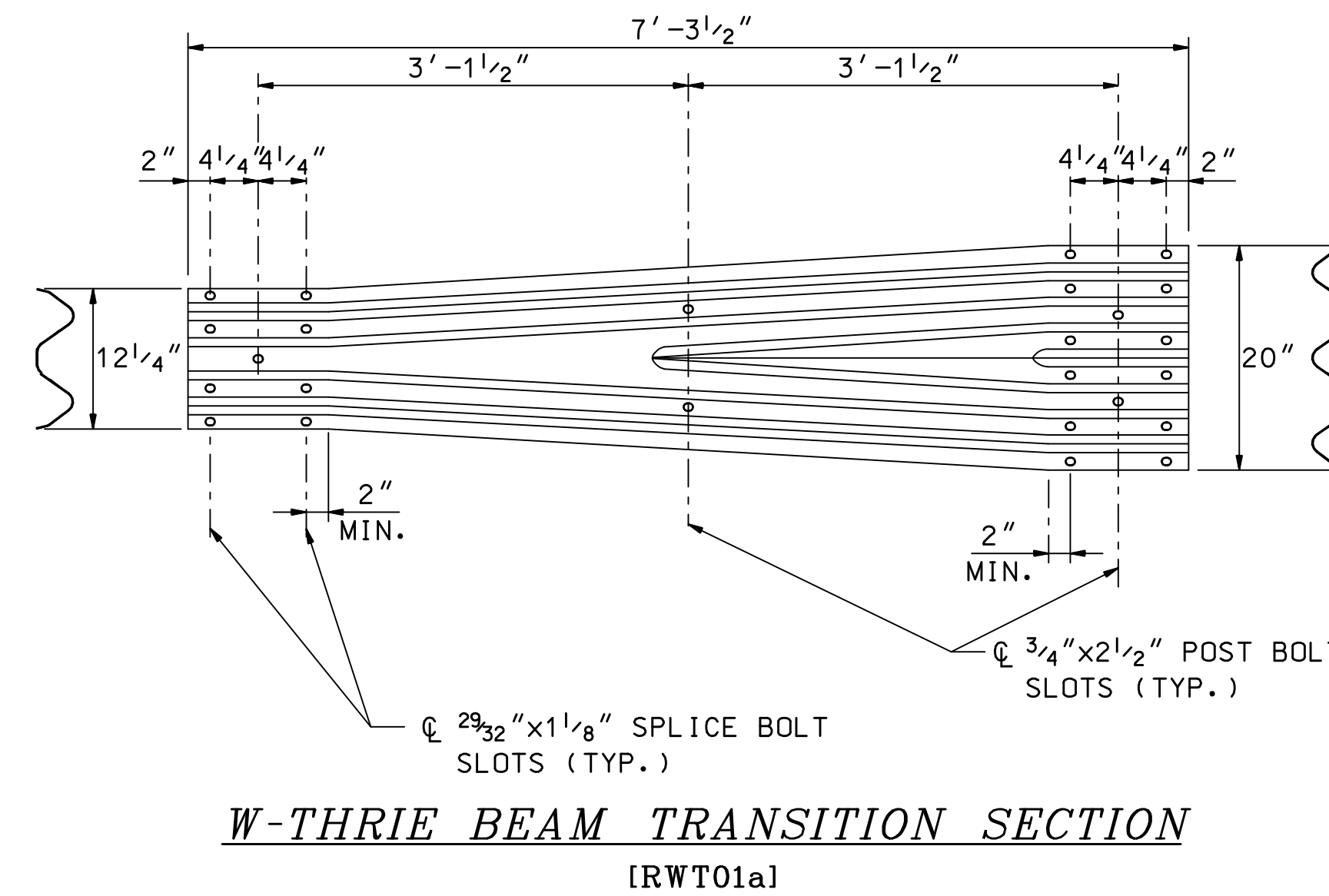
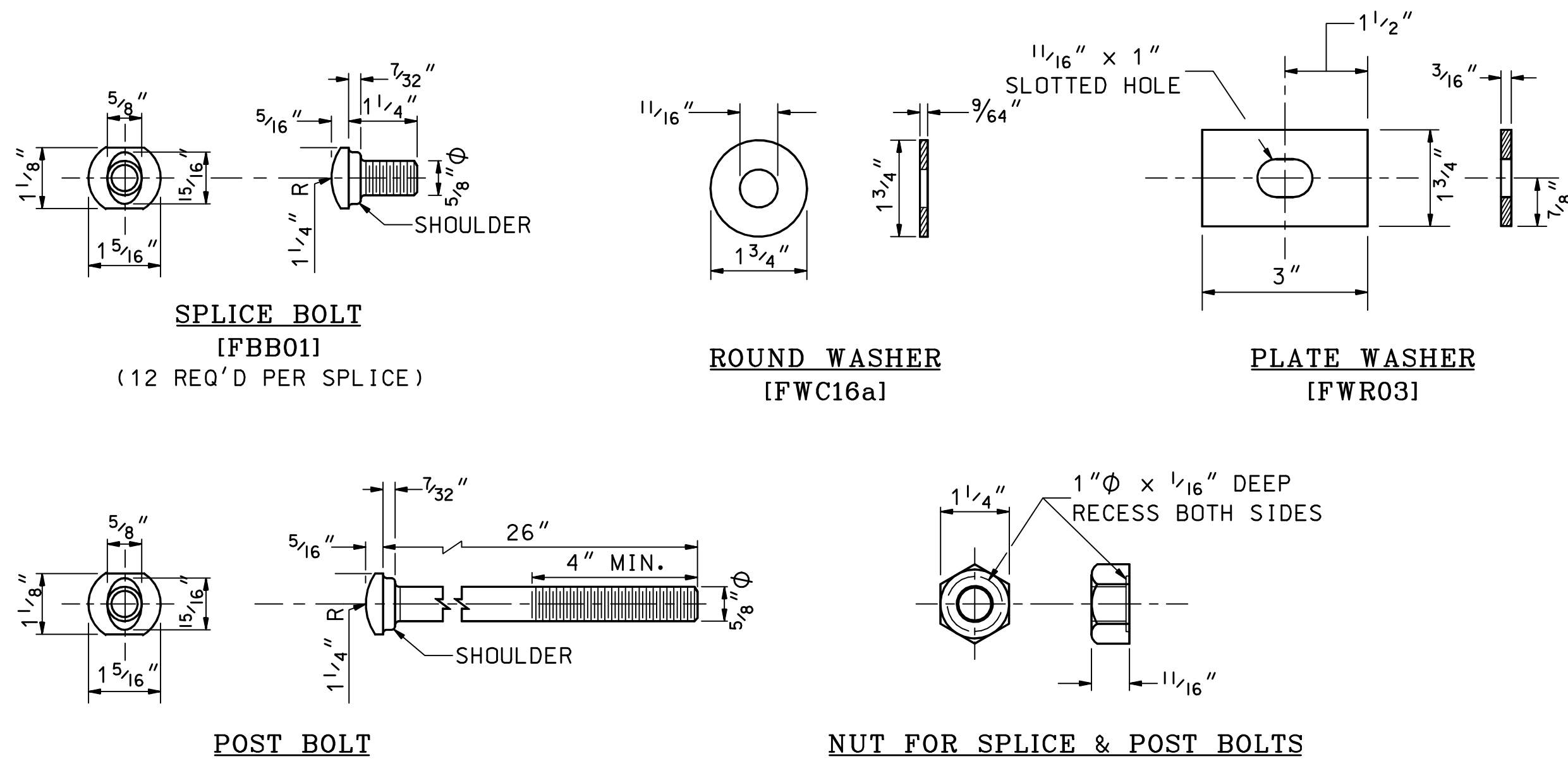
\*DGN FILE NAME  
GR-11



**ELEVATION VIEW**

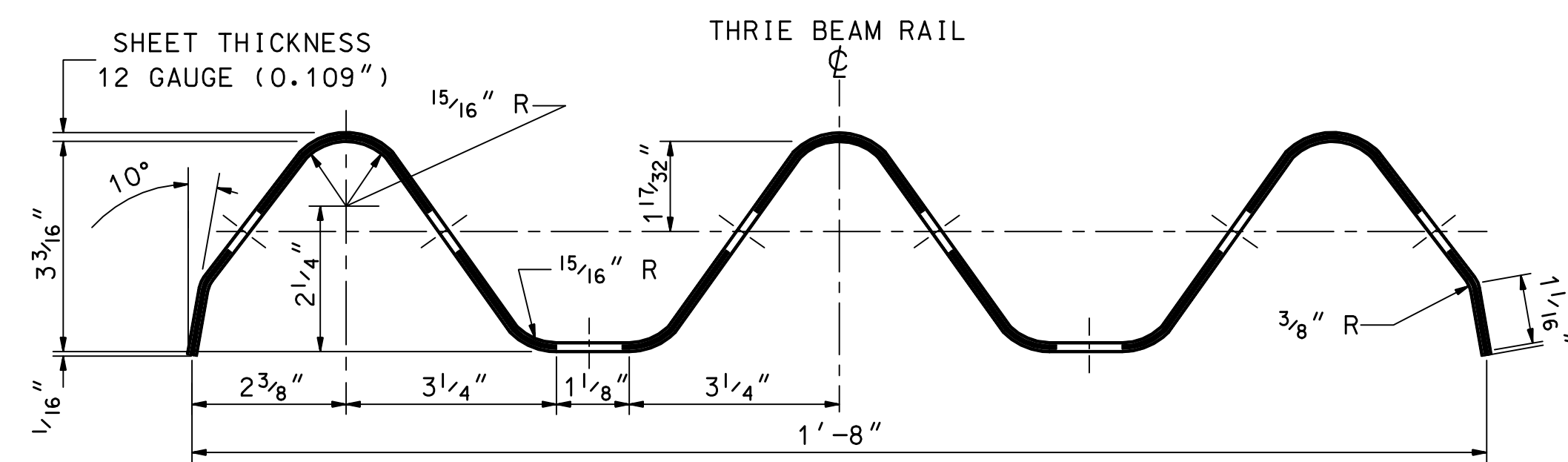


**PLAN VIEW**

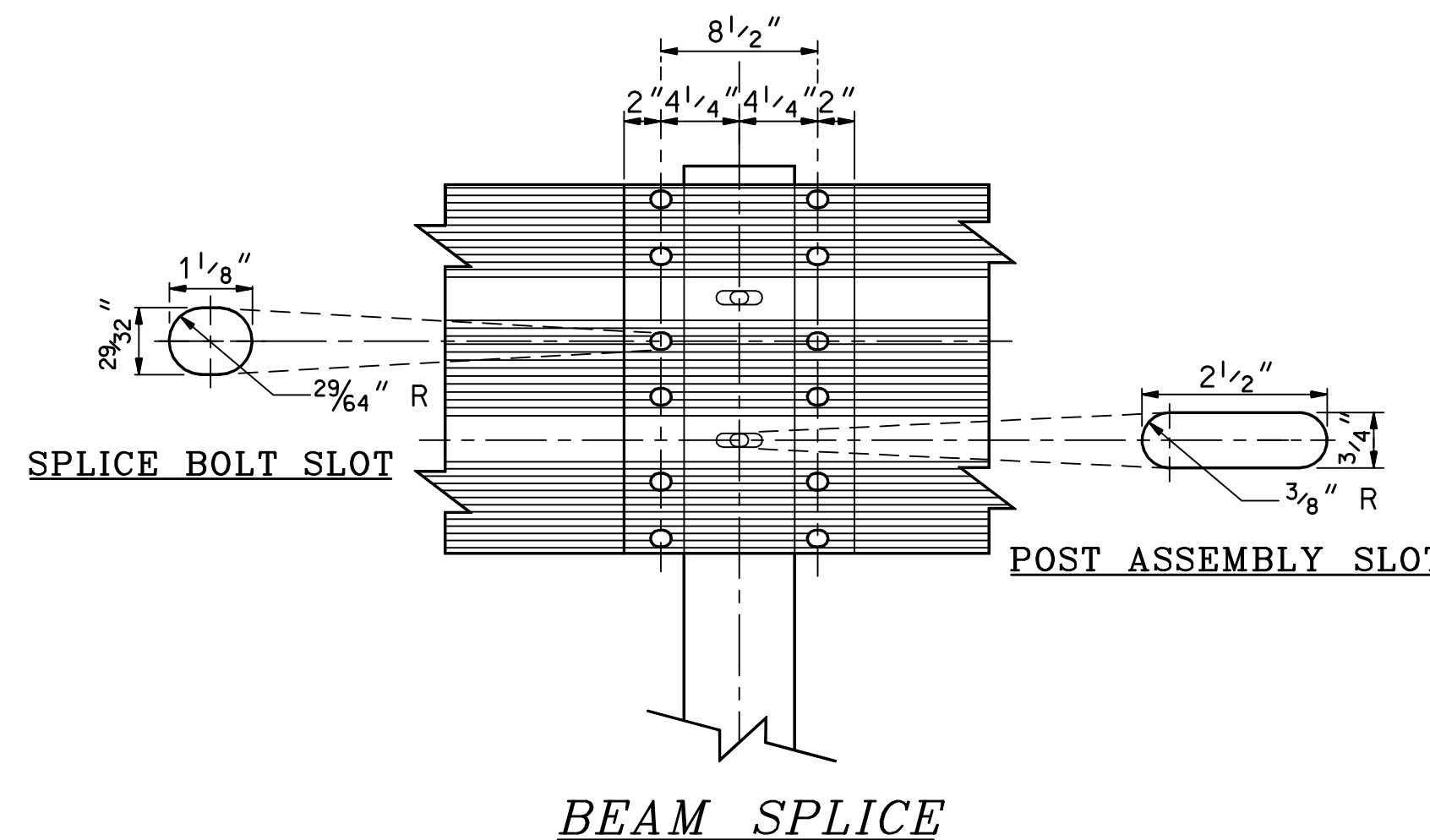


**SIDE VIEW AT SPLICE POST**

NOTE: LONGER ERECTION BOLTS MAY BE REQUIRED. IF THE BOLT EXTENDS MORE THAN 1/4" FROM THE NUT, THE BOLT SHOULD BE TRIMMED BACK.



**THRIE BEAM RAIL SECTION**  
[RTM01a & RTM02a]



**BEAM SPLICE**

**GENERAL NOTES**

- 25'-0" RAIL PANELS MAY BE USED IN PLACE OF 12'-6" PANELS, EXCEPT ON CURVES WITH A RAIL RADIUS OF LESS THAN 300 FT.
- GUARDRAIL HEIGHT SHALL BE SET FROM THE GRADE AT THE FACE OF RAIL.
- DESIGNATIONS PROVIDED IN BRACKETS [ ] REFERENCE STANDARD ELEMENTS DETAILED IN A GUIDE TO STANDARDIZED HIGHWAY BARRIER HARDWARE, LATEST ADOPTED VERSION, AASHTO-AGC-ARTBA JOINT COOPERATIVE COMMITTEE.
- SEE STD. NO. DL-1 FOR BEAM GUARDRAIL DELINEATORS.
- PAID FOR UNDER APPROPRIATE 606 ITEMS, OR AS SHOWN ON PLANS.

**GUARDRAIL STANDARD**  
**BEAM GUARDRAIL THRIE**  
**BEAM DOUBLE-FACED (WOOD)**

STANDARD PLANS