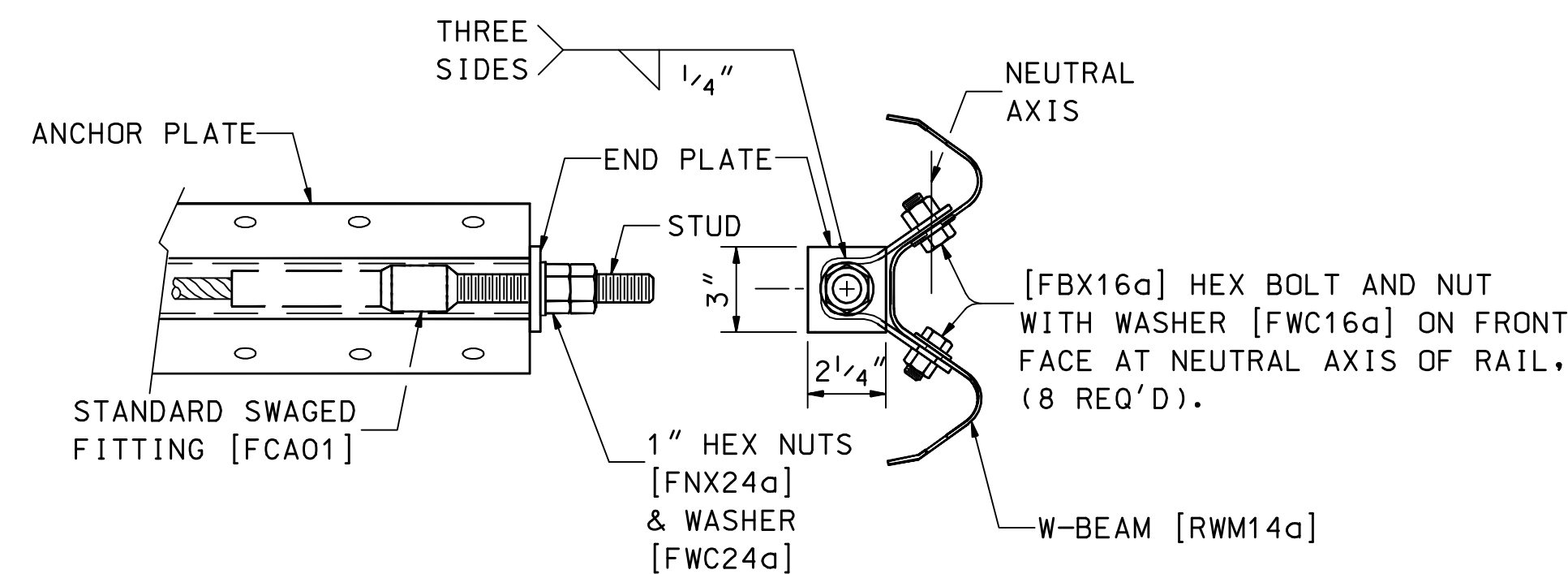
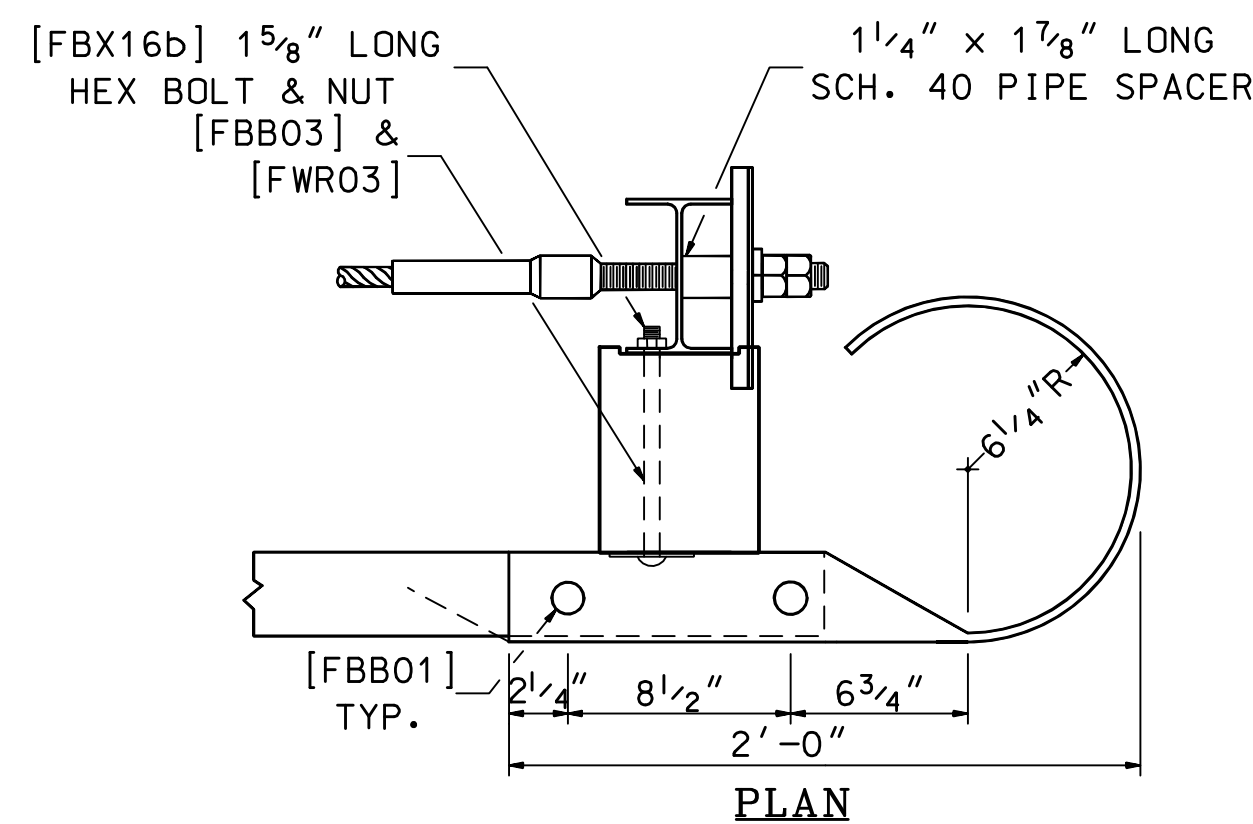


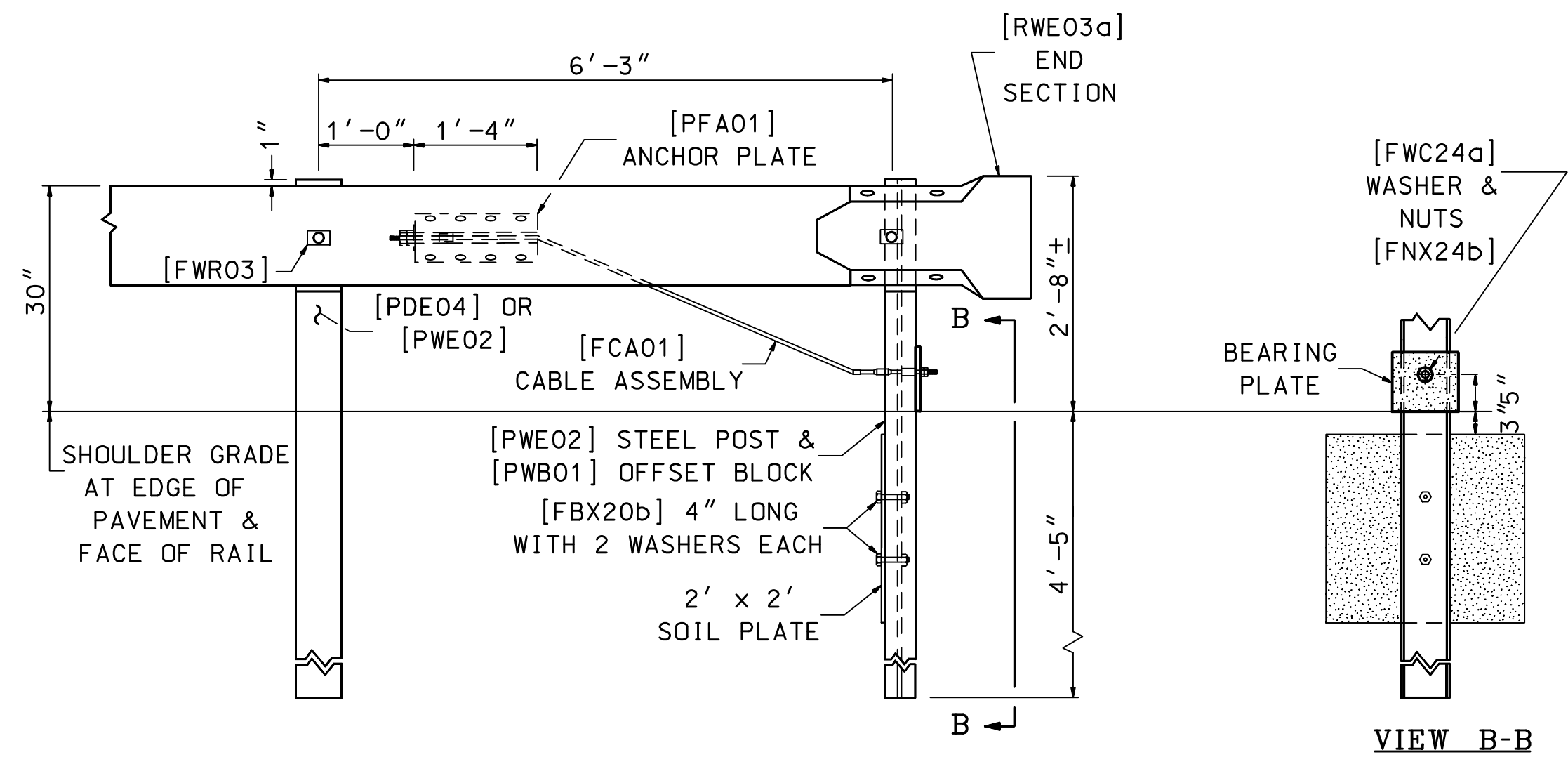
ELEVATION



ANCHOR PLATE ASSEMBLY DETAILS



ELEVATION
END SECTION
[RWE03a]

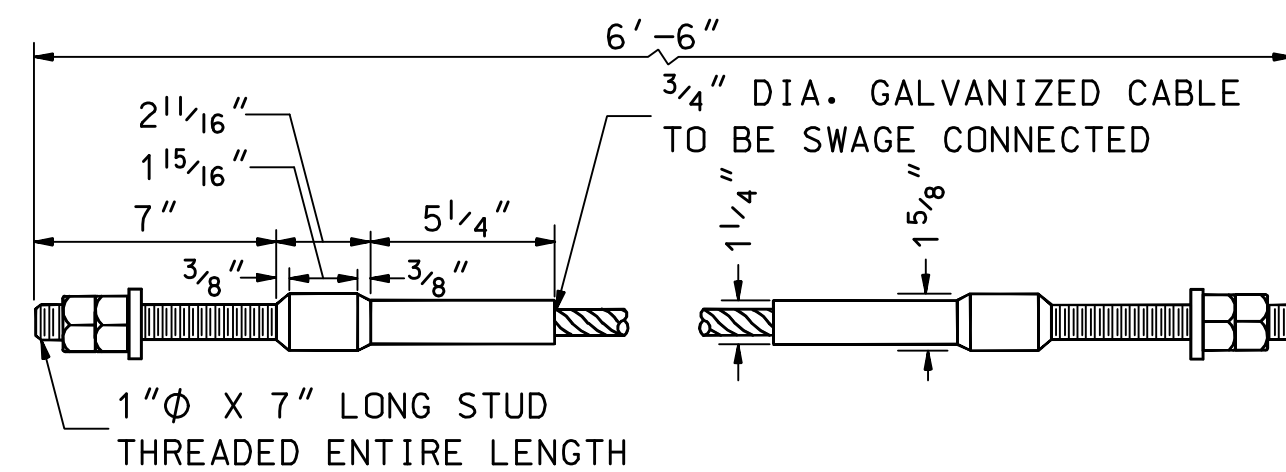


DETAIL "A"

VIEW B-B

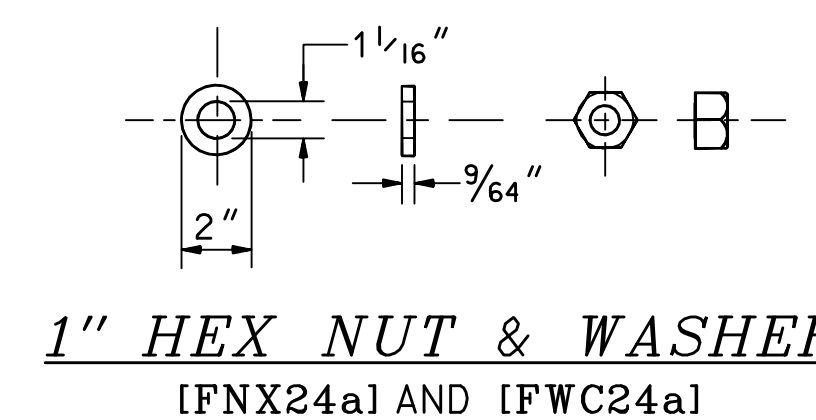
TERMINAL UNIT TYPE G-2

ITEM 606.147- BEAM GUARDRAIL (TERMINAL UNIT TYPE G-2)
PAID: UNIT
USE: ON DIVIDED HIGHWAYS ONLY WITH DIRECTION OF TRAFFIC AS INDICATED

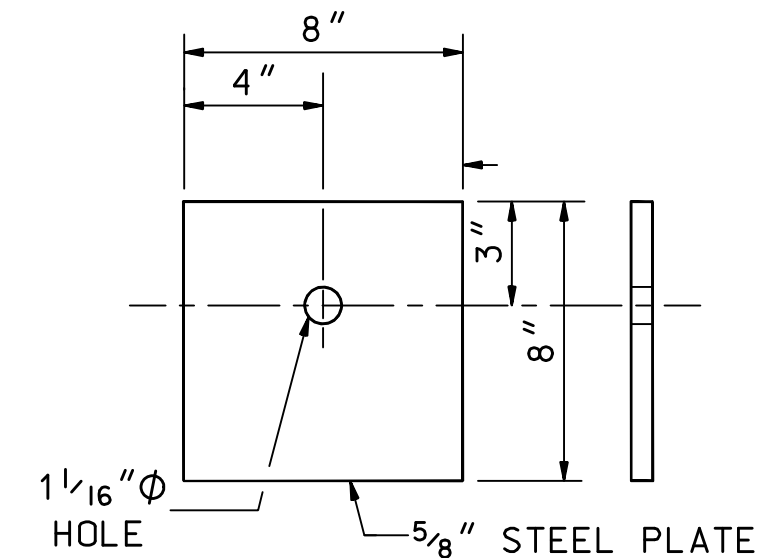


CABLE ASSEMBLY
[FCA01]

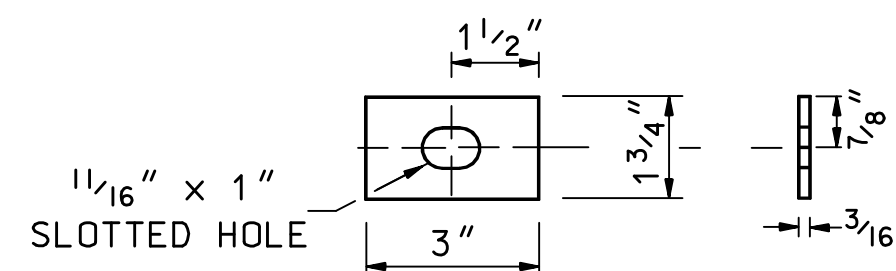
NOTE: TIGHTEN CABLE ASSEMBLY TO TAUT TENSION & DOUBLE-NUT BOTH ENDS



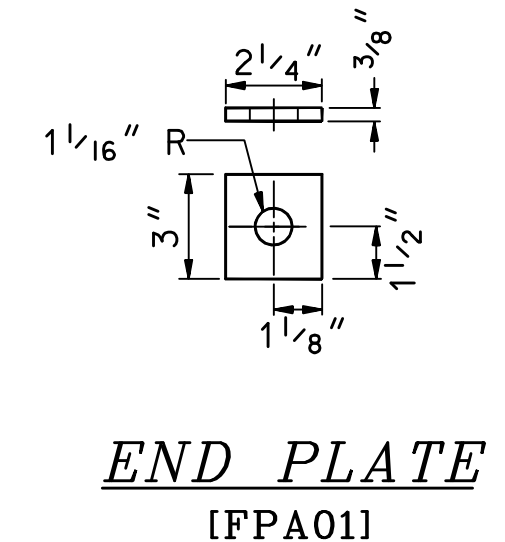
1" HEX NUT & WASHER
[FNX24a] AND [FWC24a]



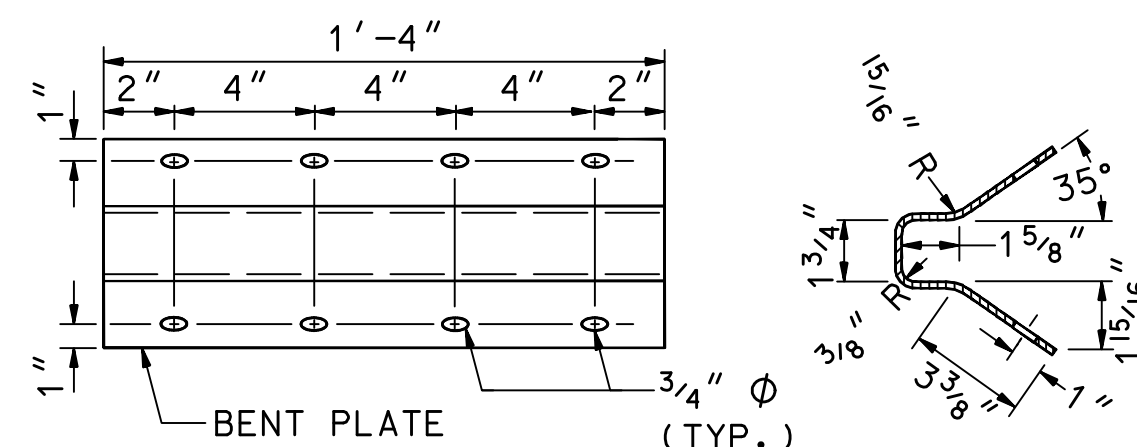
BEARING PLATE
[FPB01]



RECTANGULAR PLATE WASHER
[FWR03] (3 REQ'D)



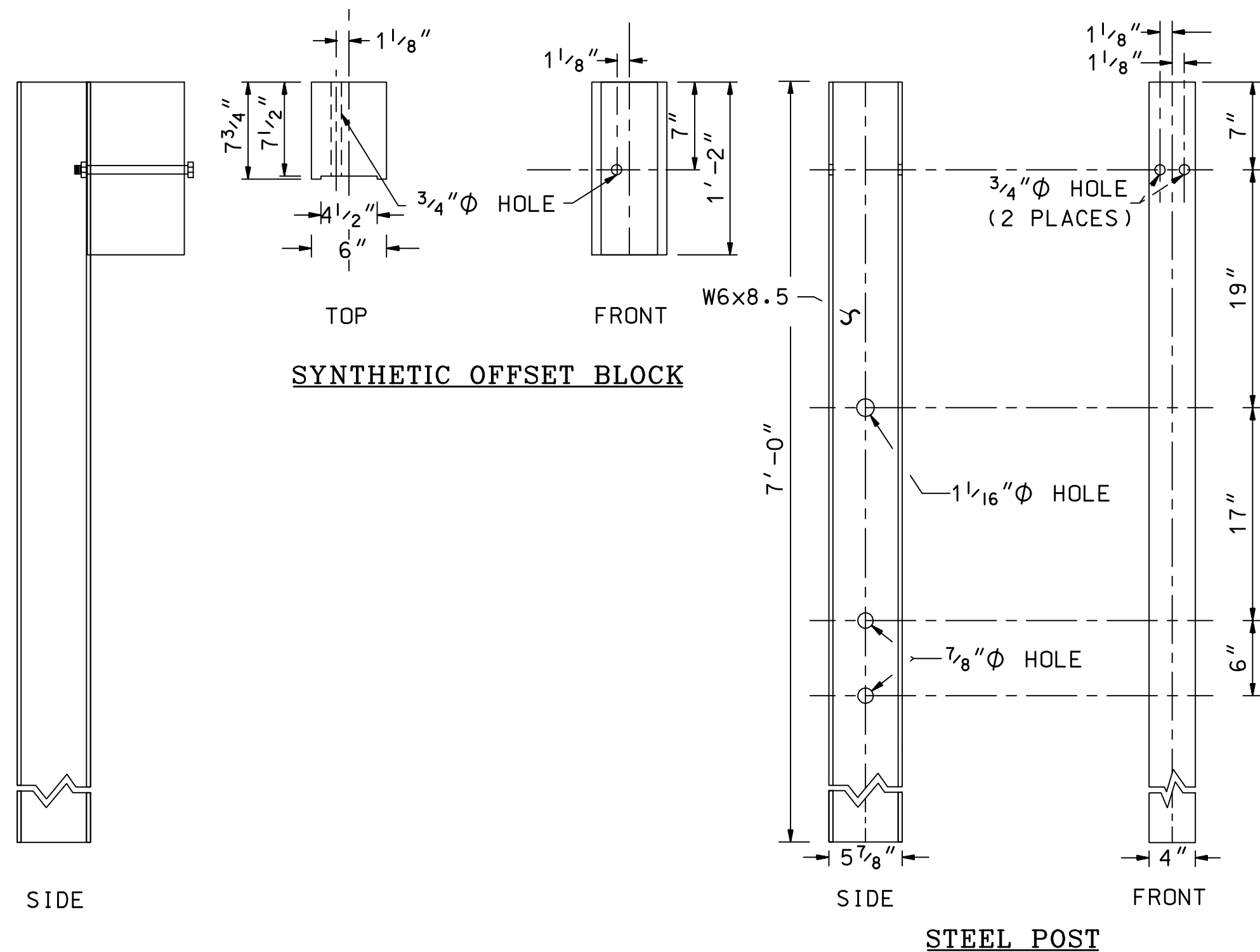
END PLATE
[FPA01]



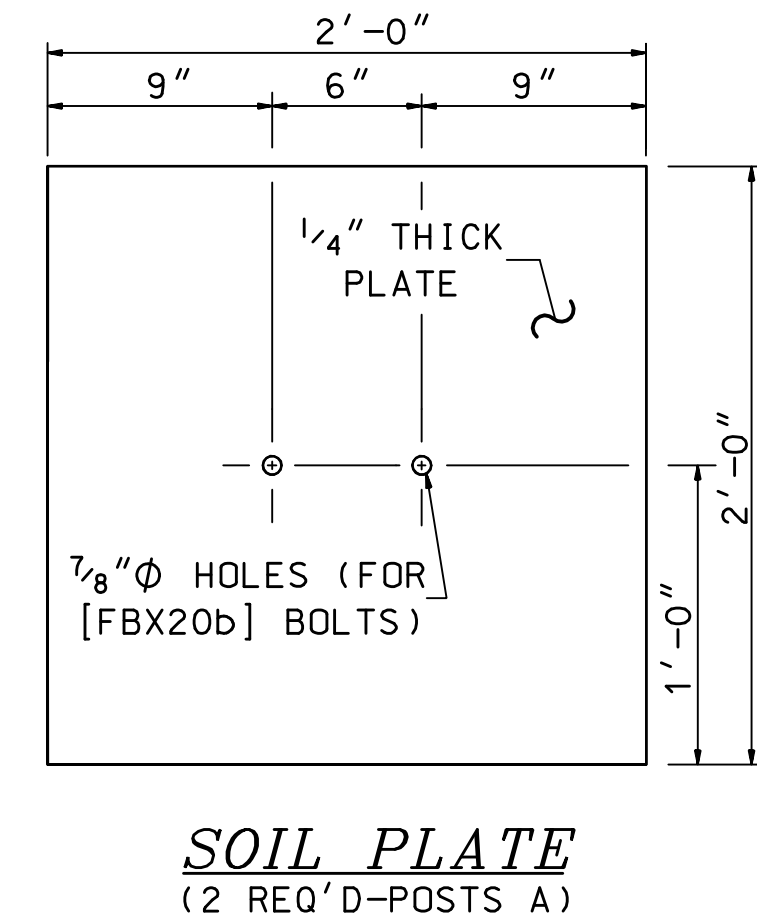
ANCHOR PLATE
[FPA01]

GENERAL NOTES

1. THE LENGTH OF NEED IS THE TOTAL LENGTH OF A LONGITUDINAL BARRIER NEEDED TO SHIELD AN AREA OF CONCERN. TO DETERMINE THE LENGTH OF NEED, REFER TO THE *ROADSIDE DESIGN GUIDE - AASHTO*, LATEST ADOPTED VERSION, THE G-2 UNIT SHALL TERMINATE IN A 4:1 OR FLATTER SLOPE.
2. DESIGNATIONS PROVIDED IN BRACKETS [] REFERENCE STANDARD ELEMENTS DETAILED IN *A GUIDE TO STANDARDIZED HIGHWAY BARRIER RAIL HARDWARE*, LATEST ADOPTED VERSION, AASHTO-AGC-ARTBA JOINT COOPERATIVE COMMITTEE.
3. ALL DIMENSIONS SUBJECT TO MANUFACTURER'S TOLERANCES.
4. STANDARDS NO. GR-1 (OR GR-2), SHALL BE USED IN CONJUNCTION WITH THIS STANDARD. SEE THESE STANDARDS FOR ADDITIONAL DETAILS OF COMMON HARDWARE.
5. TIGHTEN CABLE ASSEMBLY TO TAUT TENSION AND DOUBLE-NUT BOTH ENDS.
6. DIMENSIONS OF PLASTIC AND SYNTHETIC BLOCKOUTS ARE AS SHOWN ON MANUFACTURER'S DRAWINGS.



STRUCTURAL SHAPE STEEL POST & BLOCK
[PWE02] MODIFIED



SOIL PLATE
(2 REQ'D-POSTS A)

STANDARD NO. GR-10
REVISION DATE
07-13-2001
06-16-2010
DGN FILE NAME
GR-10

STANDARD PLANS

New Hampshire
DOT
Department of Transportation

GUARDRAIL STANDARD
BEAM GUARDRAIL
TERMINAL UNIT TYPE G-2

STANDARD NO. GR-10