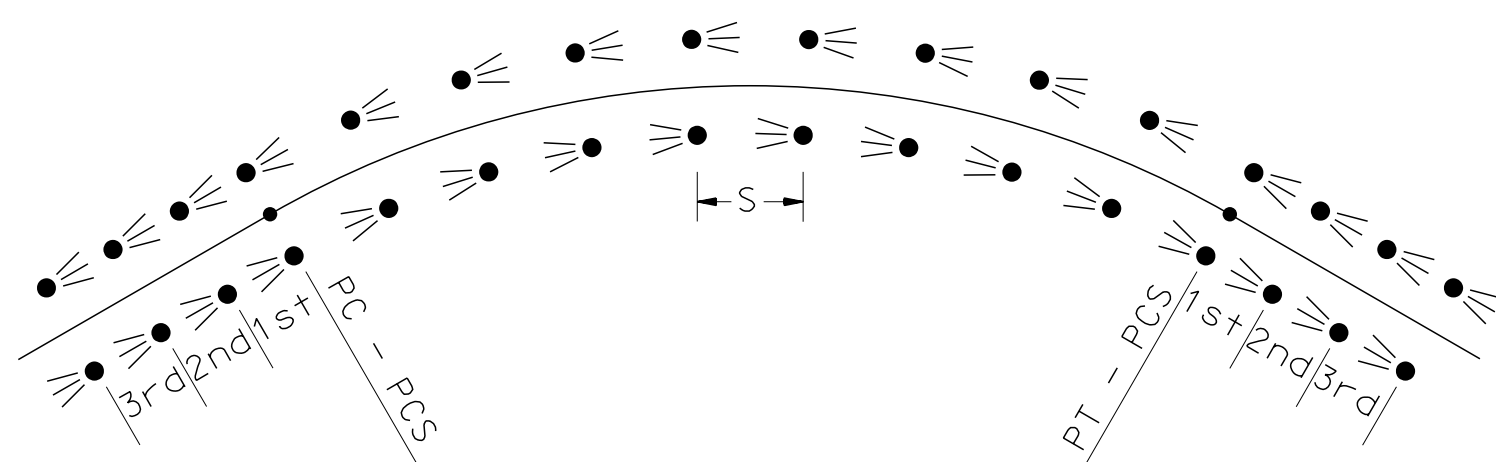


REVISION DATE
07-13-2001
06-16-2010
03-05-2015

*DGN FILE NAME
DL-1

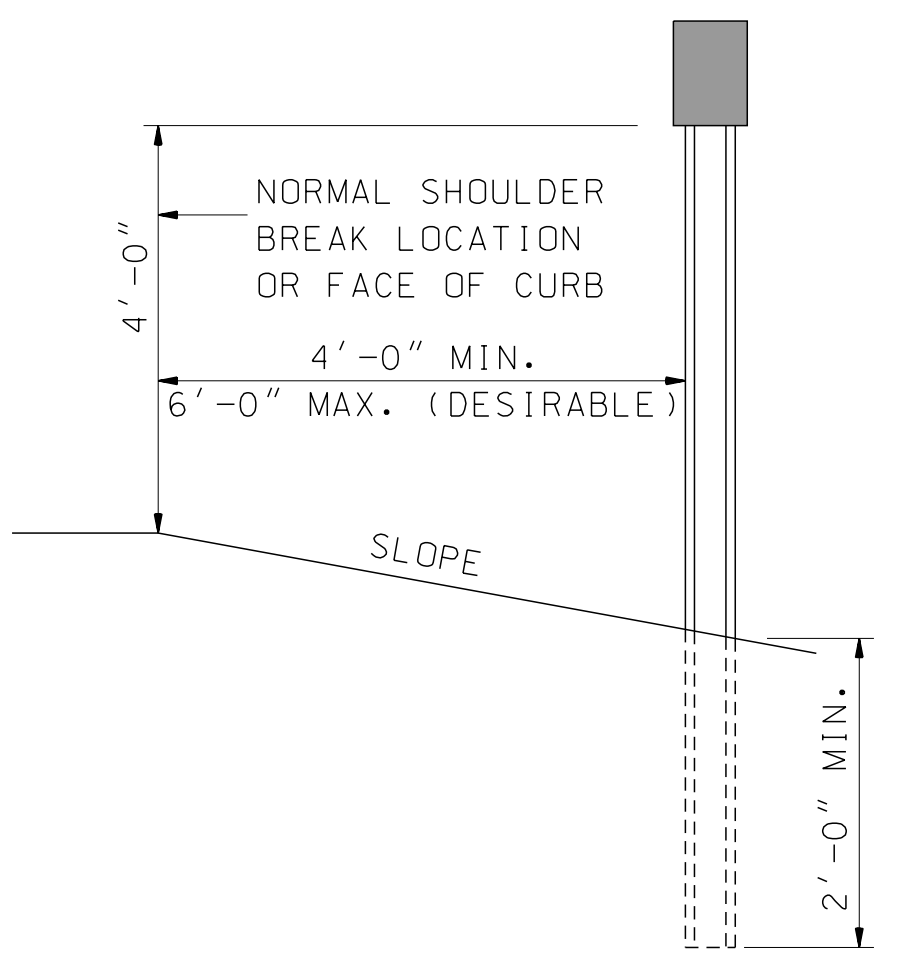
DELINEATOR SPACING



APPROXIMATE SPACING FOR DELINEATORS ON HORIZONTAL CURVES

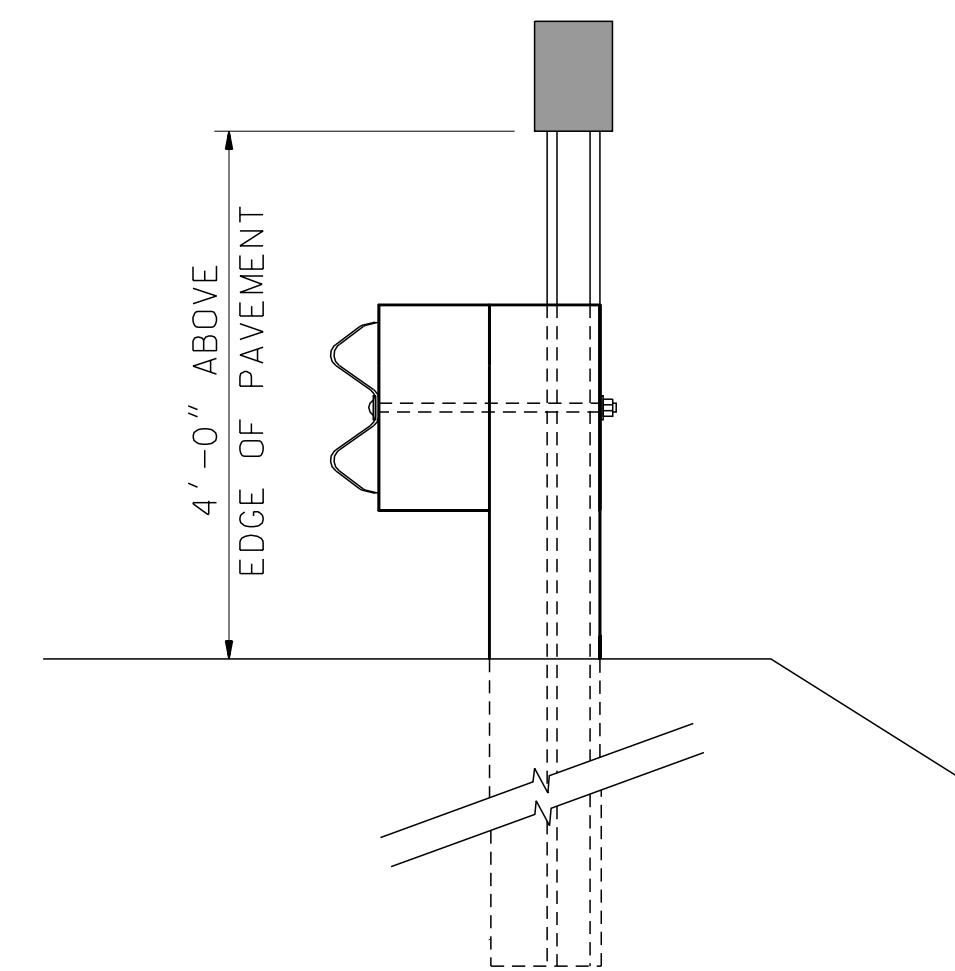
RADIUS OF CURVE (FT)	SPACING FOR POSTMOUNTED DELINEATORS ON CURVE = S (FT)	SPACING FOR BEAM GUARDRAIL DELINEATORS ON CURVE = S (FT)
≤ 50	20	18.75
> 50 BUT ≤ 115	25	25
> 115 BUT ≤ 180	35	25
> 180 BUT ≤ 250	40	25
> 250 BUT ≤ 300	50	50
> 300 BUT ≤ 400	55	50
> 400 BUT ≤ 500	65	50
> 500 BUT ≤ 600	70	50
> 600 BUT ≤ 700	75	75
> 700 BUT ≤ 800	80	75
> 800 BUT ≤ 900	85	75
> 900 BUT ≤ 1,000	90	75
> 1,000 ON MAINLINE	250	100
> 1,000 ON RAMP	100	100

1. THE MINIMUM SPACING SHALL BE 20 FEET FOR POST MOUNTED DELINEATORS AND 18.75 FEET FOR BEAM GUARDRAIL AND CONCRETE BARRIER DELINEATORS.
2. IN ADVANCE OF OR BEYOND A CURVE, AND PROCEEDING AWAY FROM THE END OF THE CURVE, THE SPACING OF THE FIRST POST MOUNTED DELINEATOR IS 2S, THE SECOND IS 3S, AND THE THIRD IS 6S, BUT NOT TO EXCEED 250 FEET IF ON A MAINLINE, OR 100 FEET ON A RAMP.

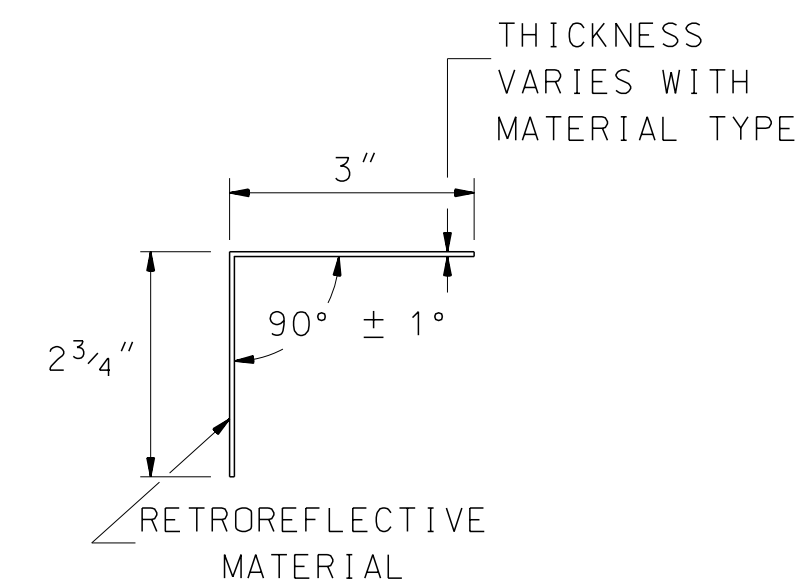


TYPICAL INSTALLATION

(ITEM 621.31)

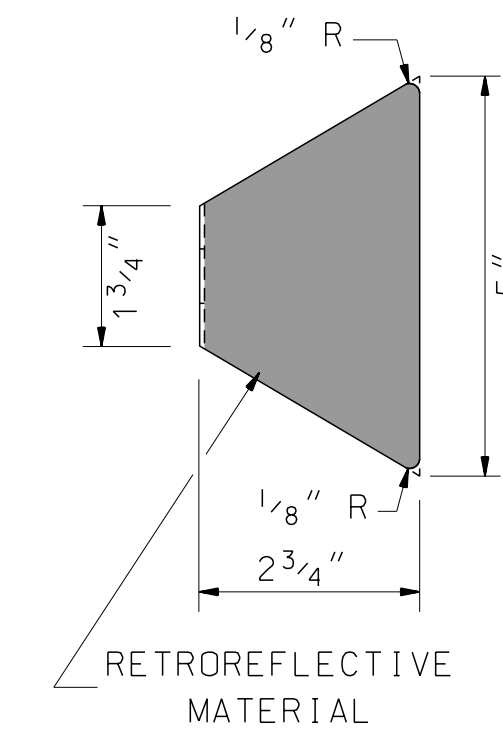
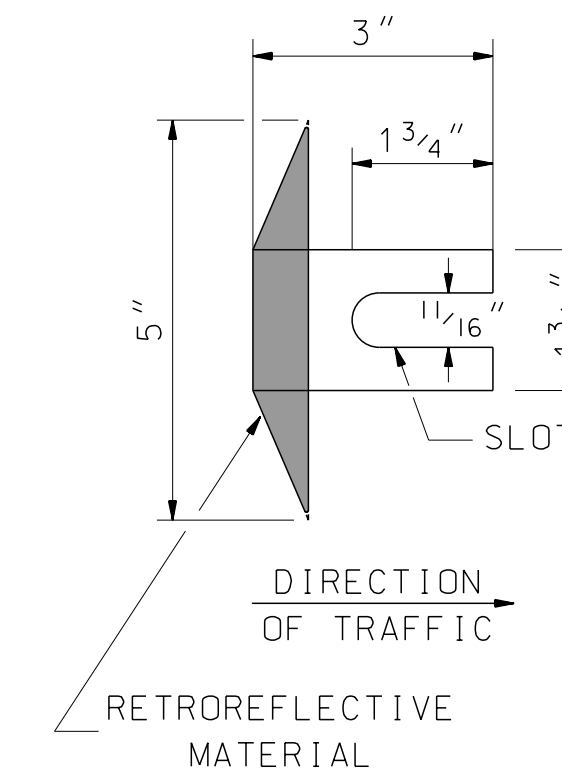


DELINEATOR WITHIN GUARDRAIL SECTION

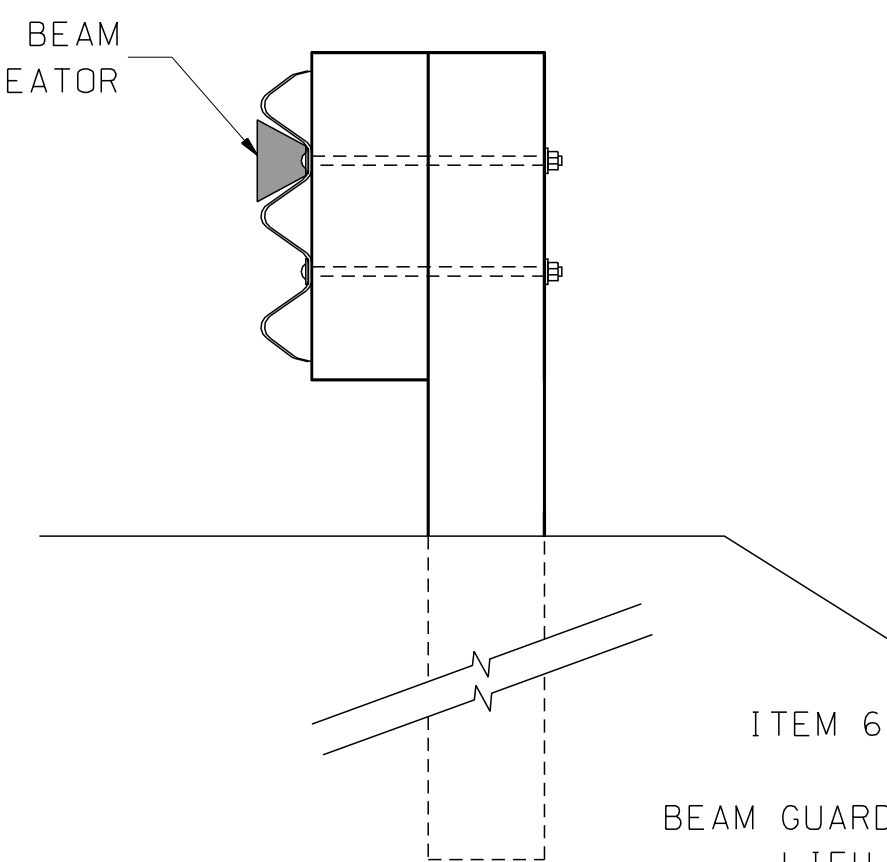


RETROREFLECTIVE BEAM GUARDRAIL DELINEATOR

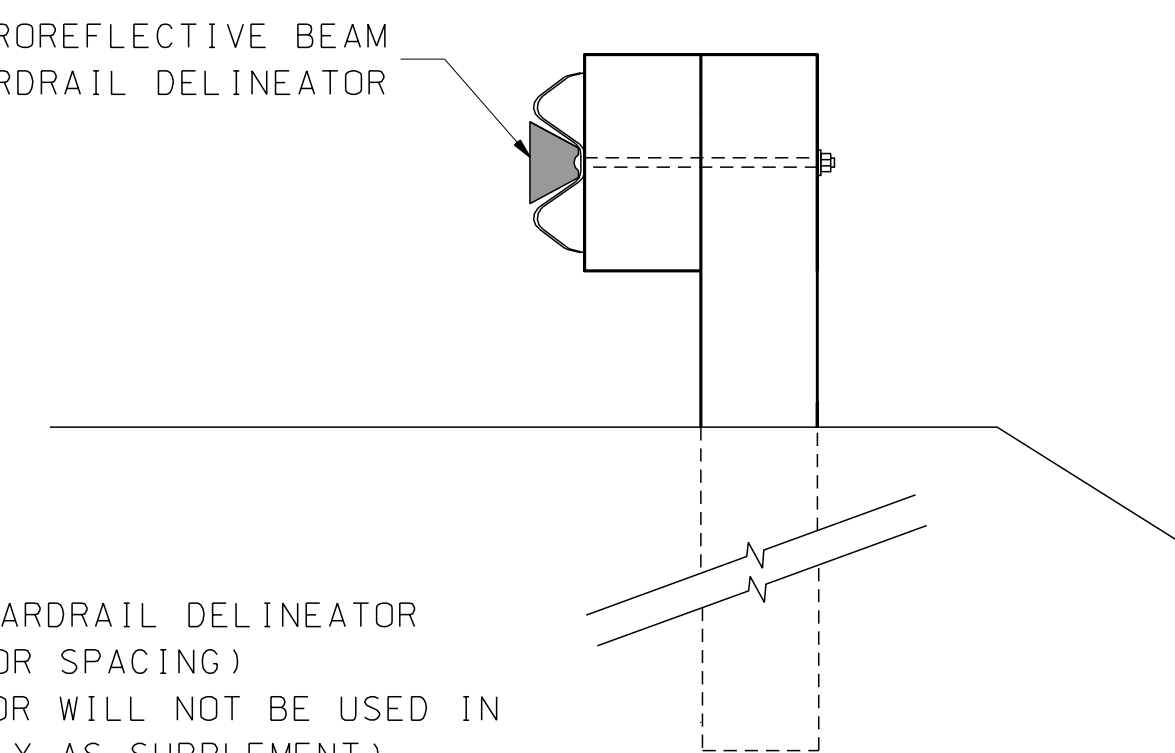
(ITEM 621.2)



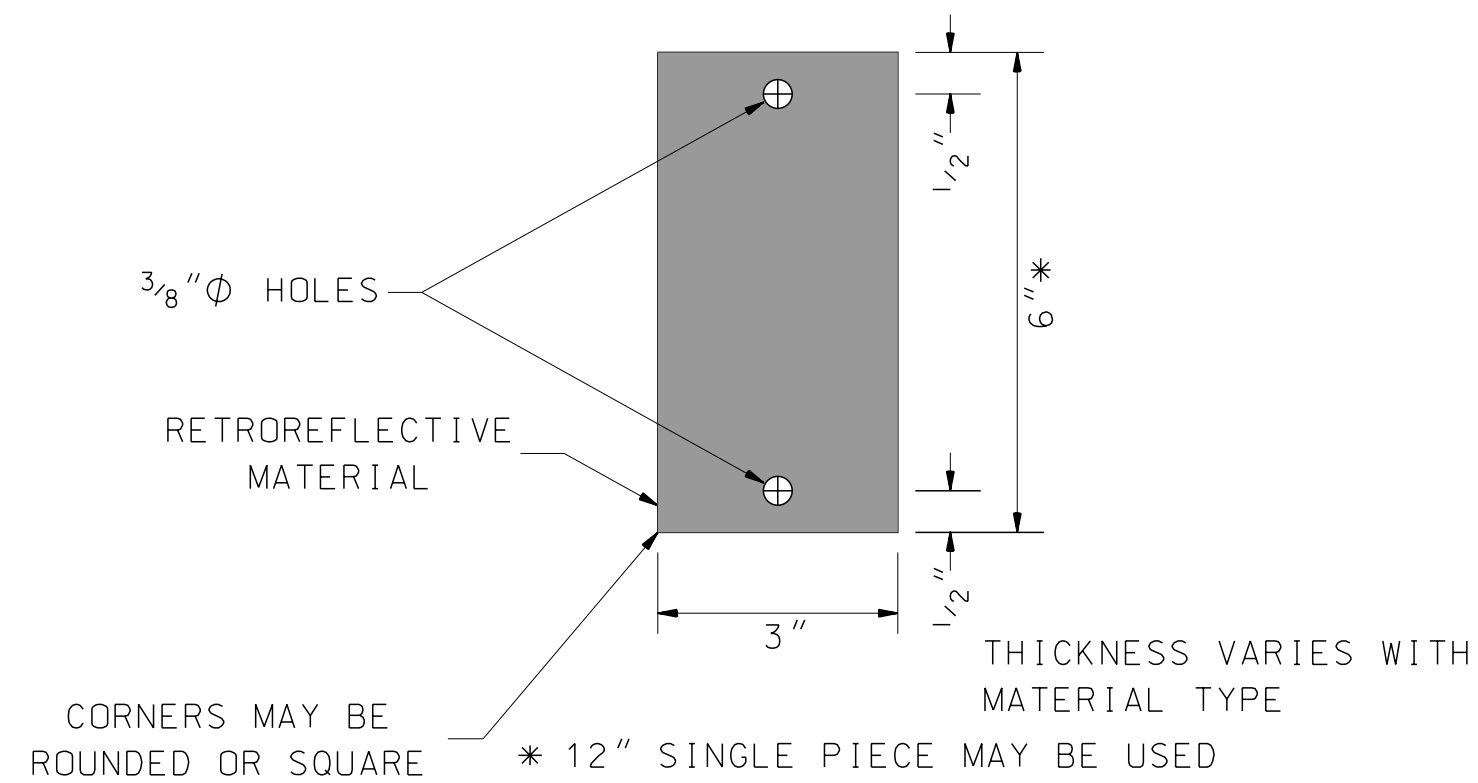
RETROREFLECTIVE BEAM GUARDRAIL DELINEATOR



RETROREFLECTIVE BEAM GUARDRAIL DELINEATOR



ITEM 621.2 - BEAM GUARDRAIL DELINEATOR (SEE CHART FOR SPACING)
BEAM GUARDRAIL DELINEATOR WILL NOT BE USED IN LIEU OF 621.31 (ONLY AS SUPPLEMENT)

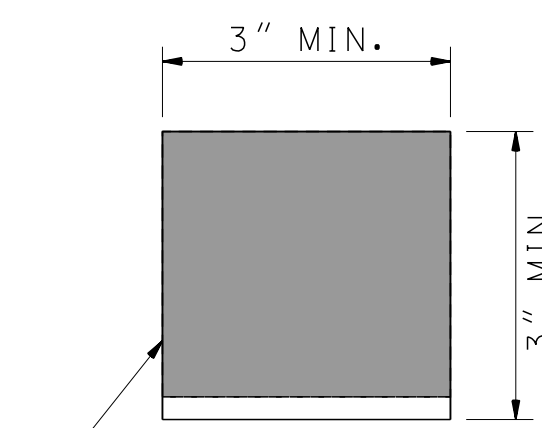


RETROREFLECTIVE DELINEATOR

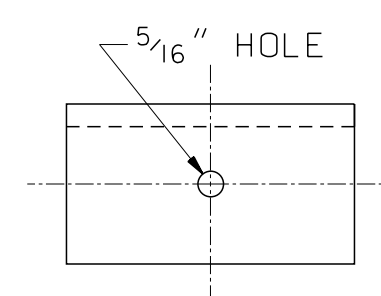
(ITEM 621.3X, 621.4)

GENERAL NOTES

1. UNLESS OTHERWISE ORDERED, DELINEATORS SHALL BE MOUNTED ALONG THE RIGHT SIDE OF ALL ROADWAYS (SEE TYPICAL). DELINEATORS MAY ALSO BE USED ON THE LEFT SIDE OF DIVIDED HIGHWAYS WHERE NEEDED FOR CLEAR INDICATION OF THE ALIGNMENT.
2. DELINEATORS LOCATED BEHIND GUARDRAIL SHALL BE INSTALLED SO THAT THE DELINEATOR POST IS ADJACENT TO THE TRAILING EDGE OF THE NEAREST GUARDRAIL POST.
3. WHEN DELINEATION IS USED ONLY ON CURVES, THREE DELINEATORS SHALL BE PLACED BEFORE AND AFTER THE CIRCULAR PORTION OF THE CURVE.
4. WHEN DELINEATION IS USED ON TANGENTS, THE SPACING SHALL BE 250 FEET. THE TANGENT SPACING SHALL BEGIN BEYOND THE SPACING REQUIREMENTS FOR CURVES.
5. DELINEATOR COLORS SHALL IN ALL CASES CONFORM TO THE COLOR OF THE EDGLINES.
6. DELINEATORS WILL NOT BE PLACED BEHIND SIDEWALK.

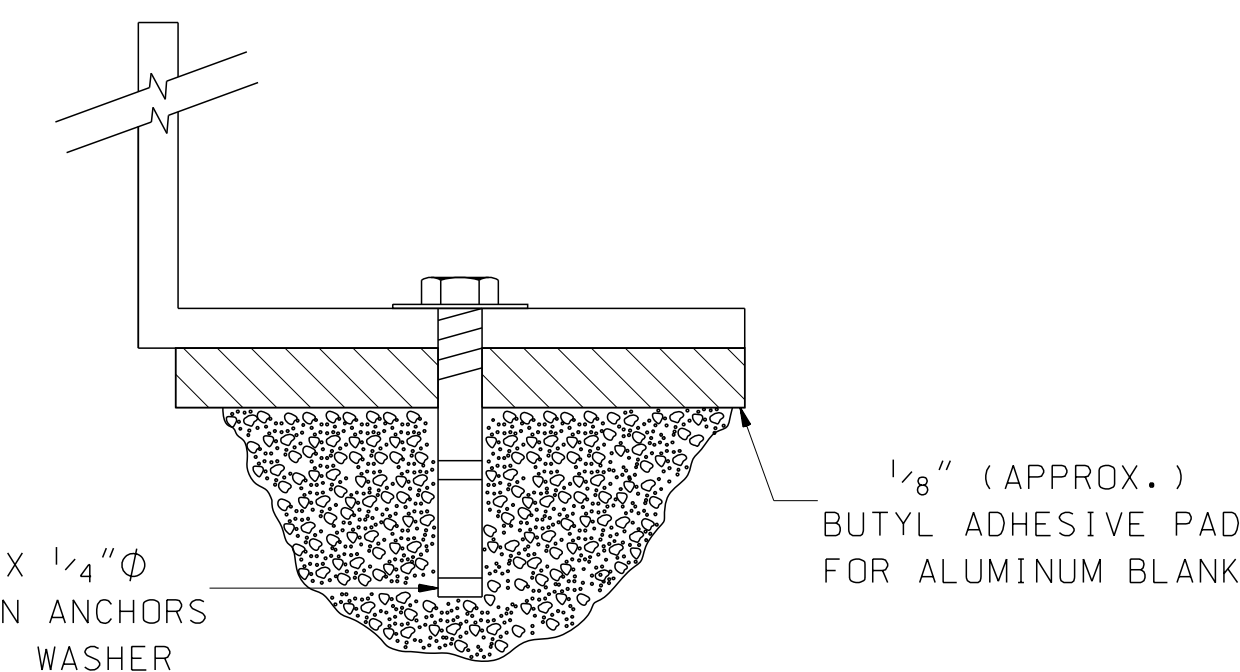
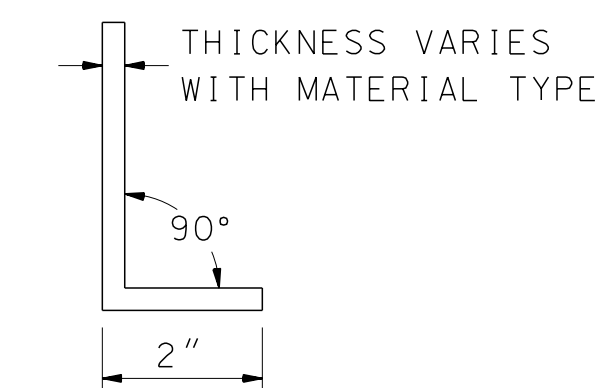


RETROREFLECTIVE MATERIAL (SEE NOTE B)



RETROREFLECTIVE PERMANENT CONCRETE BARRIER DELINEATOR

(ITEM 621.1)



BARRIER DELINEATOR GENERAL NOTES

- A. THIS DELINEATOR IS TO BE PLACED ON TOP OF CONCRETE BARRIER.
- B. IF GLARE SCREEN IS PLACED ON TOP OF THE CONCRETE BARRIER, THEN DELINEATORS ARE ATTACHED TO EITHER SIDE OF THE BARRIER AND DO NOT NEED TO BE RETRO-REFLECTORIZED ON BOTH SIDES. THE UPPER EDGE OF THE DELINEATOR IS TO BE PLACED VERTICALLY 1/2 INCH DOWN FROM THE TOP OF THE BARRIER.
- C. YELLOW DELINEATOR FOR MEDIAN BARRIERS SHALL BE LOCATED ON THE LEFT SIDE OF THE ROADWAY FACING TRAFFIC IN BOTH DIRECTIONS, AND SHALL HAVE RETROREFLECTIVE MATERIAL ON BOTH SIDES, BEGINNING AT THE FIRST FULL HEIGHT OF THE CONCRETE MEDIAN BARRIER AND SPACED ACCORDING TO CHART FOR BEAM GUARDRAIL DELINEATORS.

DELINEATION STANDARD

ROADSIDE DELINEATION