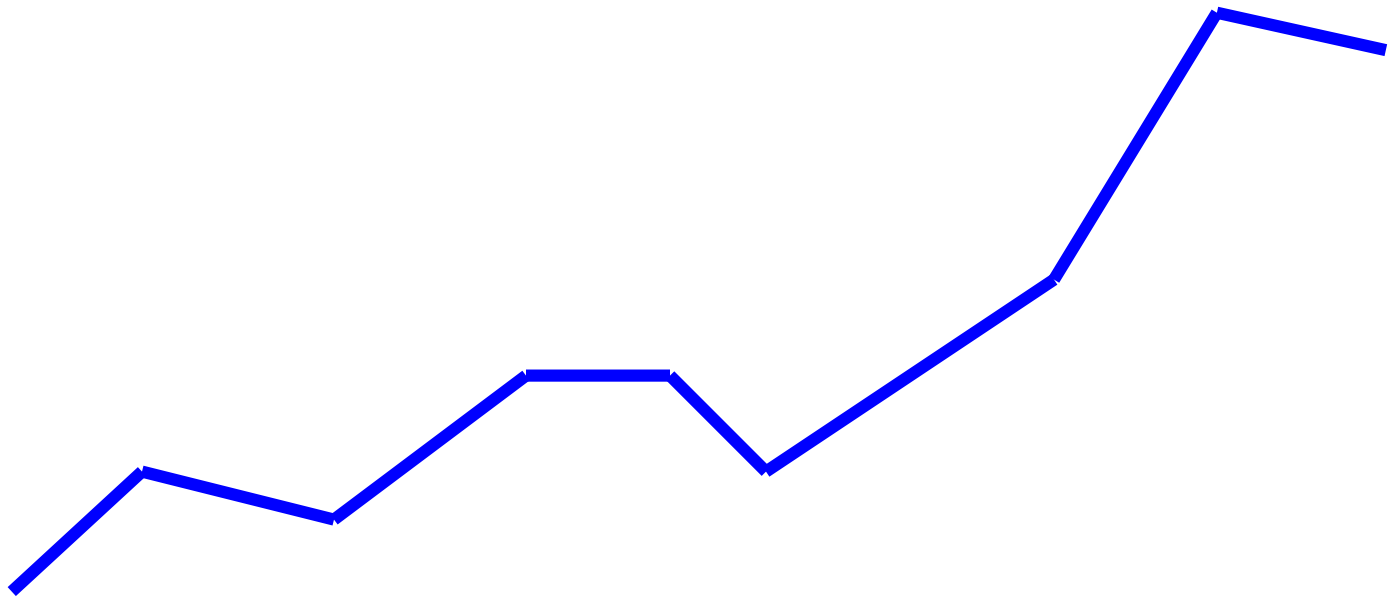


# Construction Cost Index

*New Hampshire Department of Transportation*

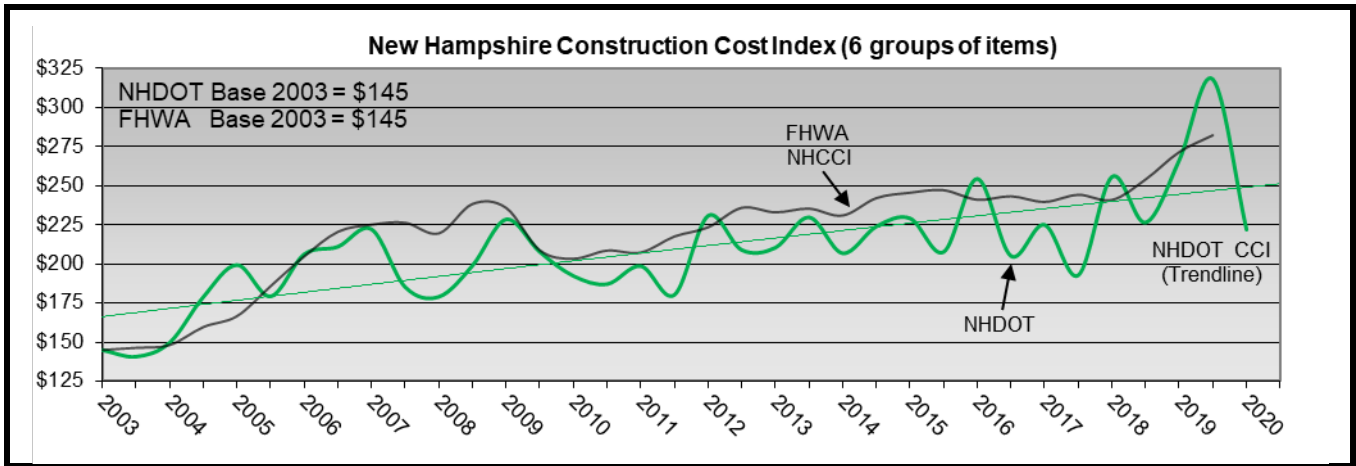


---

New Hampshire DOT Bureau of Construction  
2<sup>nd</sup> Half, 2019

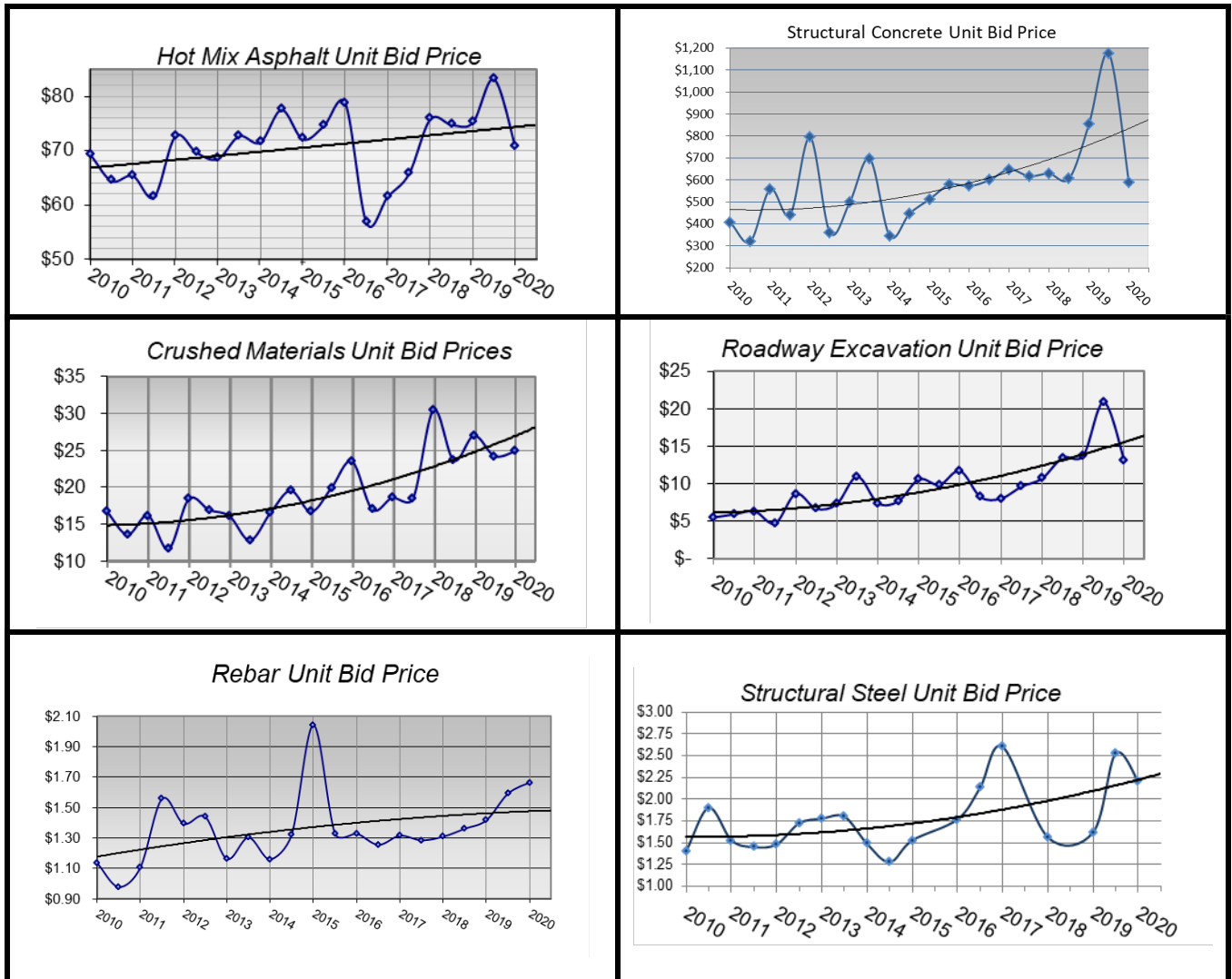
---





The graph above displays the average changes of the six item groups as displayed below. FHWA recalculated their National Highway Construction Cost Index (NHCCI v2.0) during 2016. New Hampshire CCI was also recalculated and aligned to FHWA's base year of 2003 and the base price of \$145.

The prices below reflect six month average unit prices.

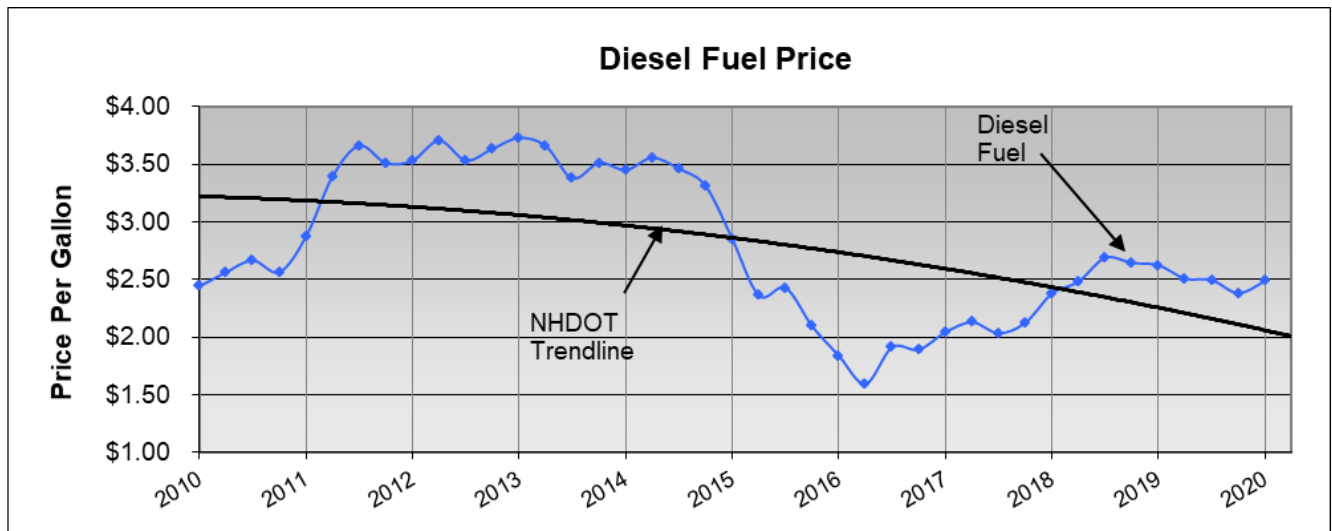
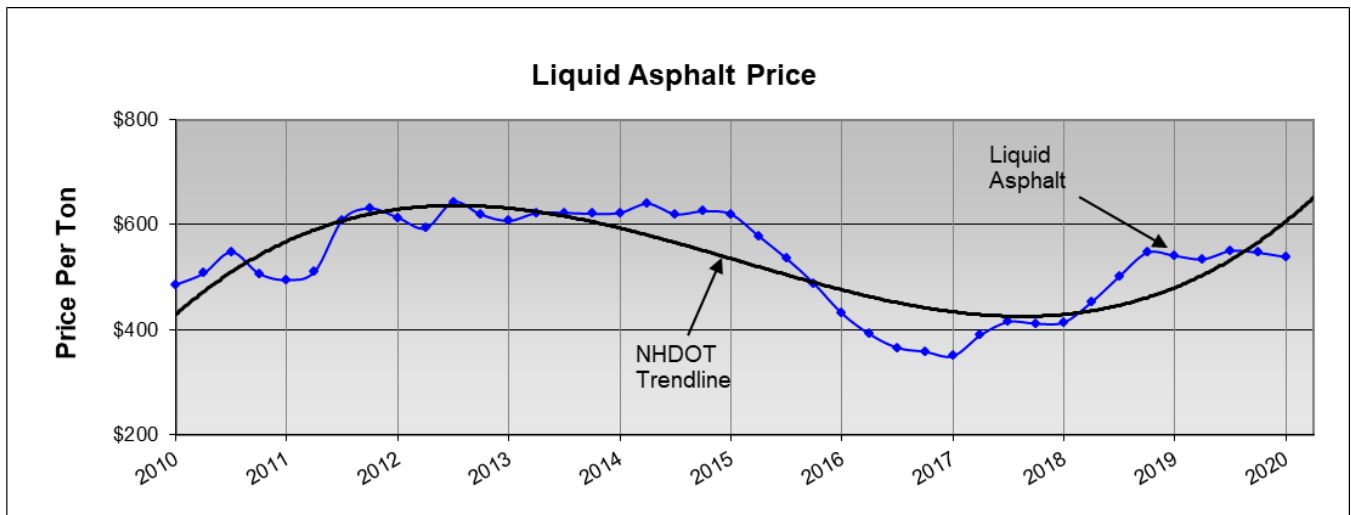


The New Hampshire CCI for the second half of 2019 closed at (222), down from (266) for the second half of 2018. 2019 saw a mid year high of (318). The second half of 2019 average price for roadway excavation of \$13.07 was down 64 cents and 4.6% from 2018. Crushed material was down 7.9% from \$26.99 to \$24.87. With one project bid structural steel rose 36% from the second half of 2018 of \$1.62 to an end of year average of \$2.20. Hot mix asphalt dropped 5.9 % to \$70.71. The structural concrete ended the year at \$587.24 down 31.3%. Reinforcing steel was up 25 cents to \$1.67, a 17.5 % increase.

The following Components (weighted as shown) are used to compute the NHDOT CCI.	
Crushed Material	14.49%
Hot Mix	49.30%
Roadway Excavation	12.35%
ReBar	3.50%
Steel	10.24%
Concrete	10.13%

Fuel price dropped 14 cent to \$2.47 showing a price reduction of 5.41% for all of 2019. The 2019 fourth quarter average asphalt price was down 0.46% or \$2.50 from the 2018 fourth quarter average with an ending price of \$538.83.

## NHDOT Fuel & Liquid Asphalt Prices

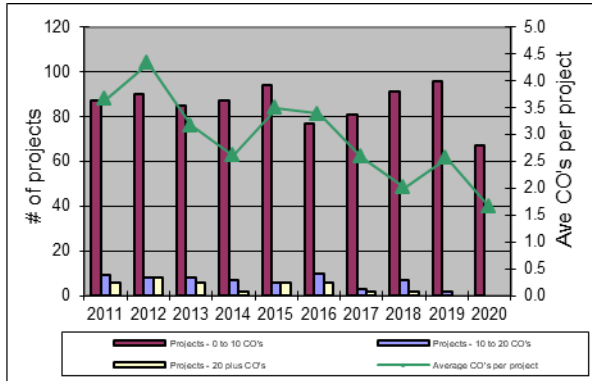


# Construction Bureau Performance Measures

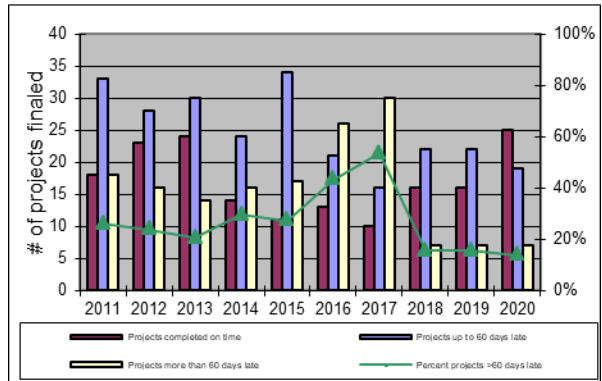
Compiled by State Fiscal Year FY20

July 1<sup>st</sup> thru December 31<sup>st</sup>

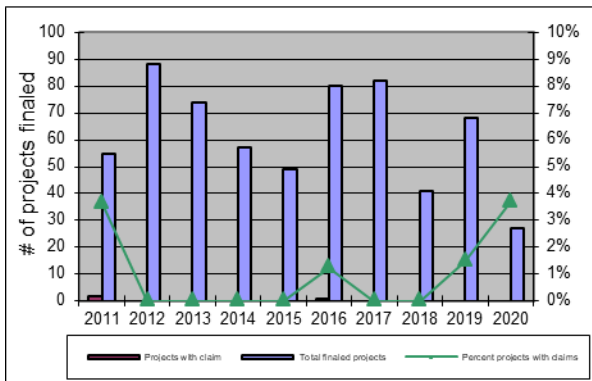
## CHANGE ORDERS



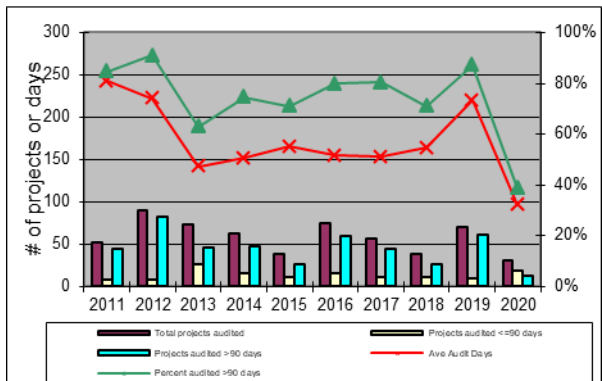
## CONTRACT DURATION



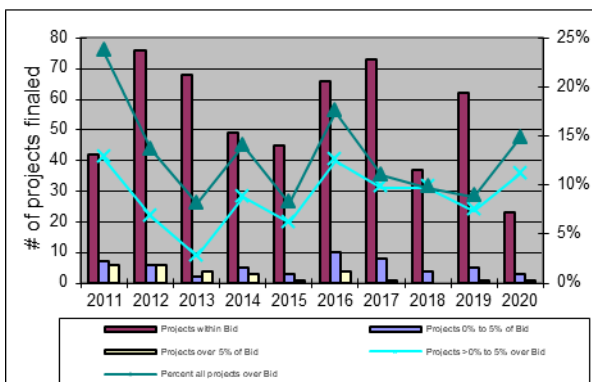
## CONTRACTOR CLAIMS



## PROJECT AUDIT



## IDS vs. FINAL AMOUNTS



## PROJECT ACTIVITY

