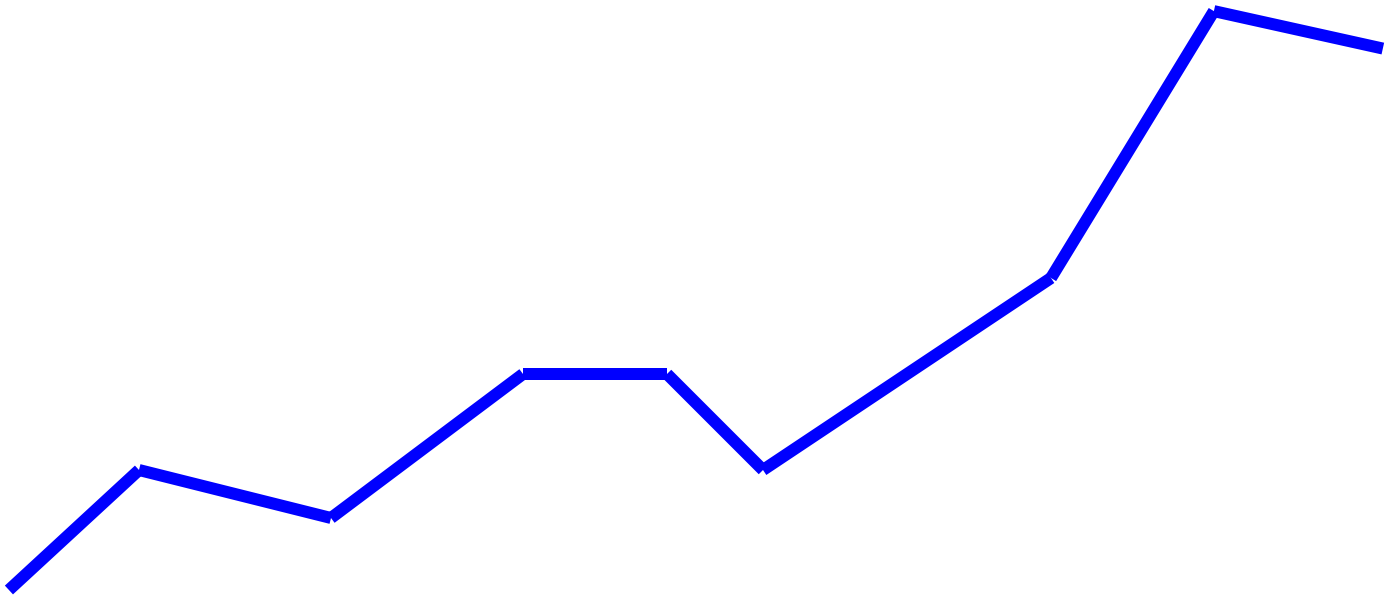


Construction Cost Index

New Hampshire Department of Transportation

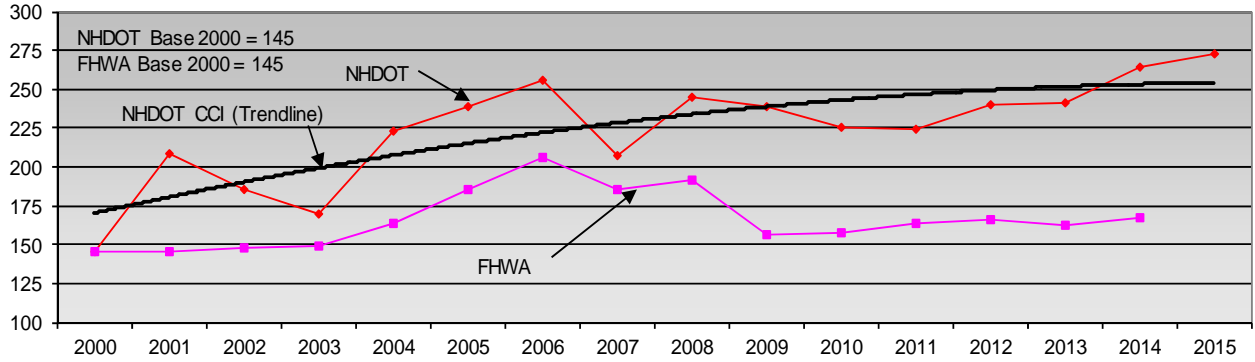


New Hampshire DOT Bureau of Construction
4th Quarter, 2015

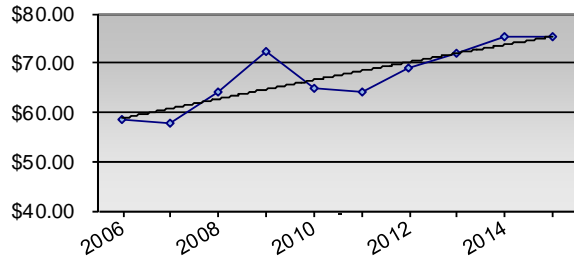
New Hampshire
DOT

Construction Cost Indices for the 2nd Half of 2015

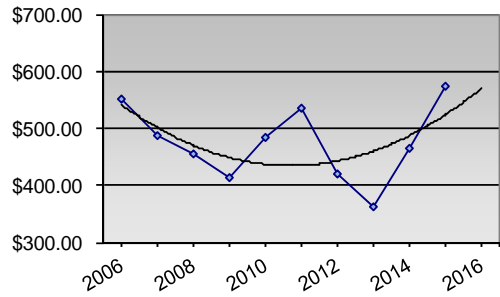
NHDOT Base 2000 = 145; FHWA Base 2000 = 145



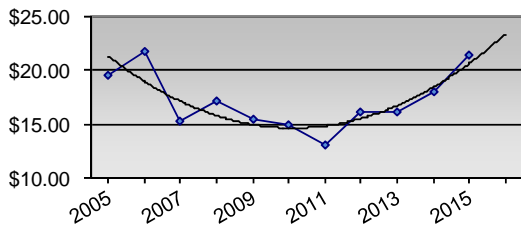
Hot Mix Asphalt Unit Bid Price



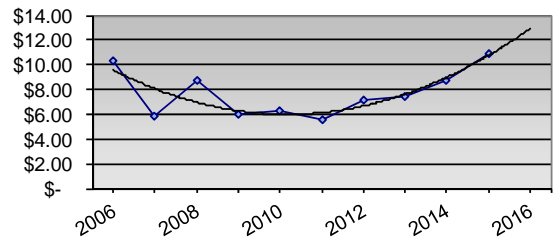
Structural Concrete Unit Bid Price



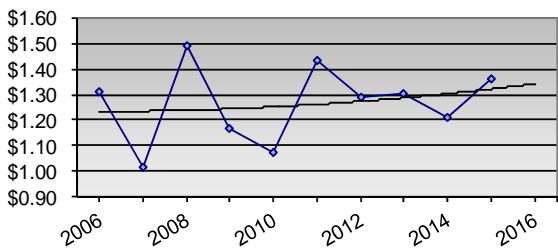
Crushed Materials Unit Bid Prices



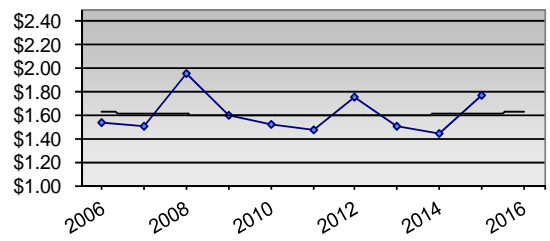
Roadway Excavation Unit Bid Price



Rebar Unit Bid Price



Structural Steel Unit Bid Price

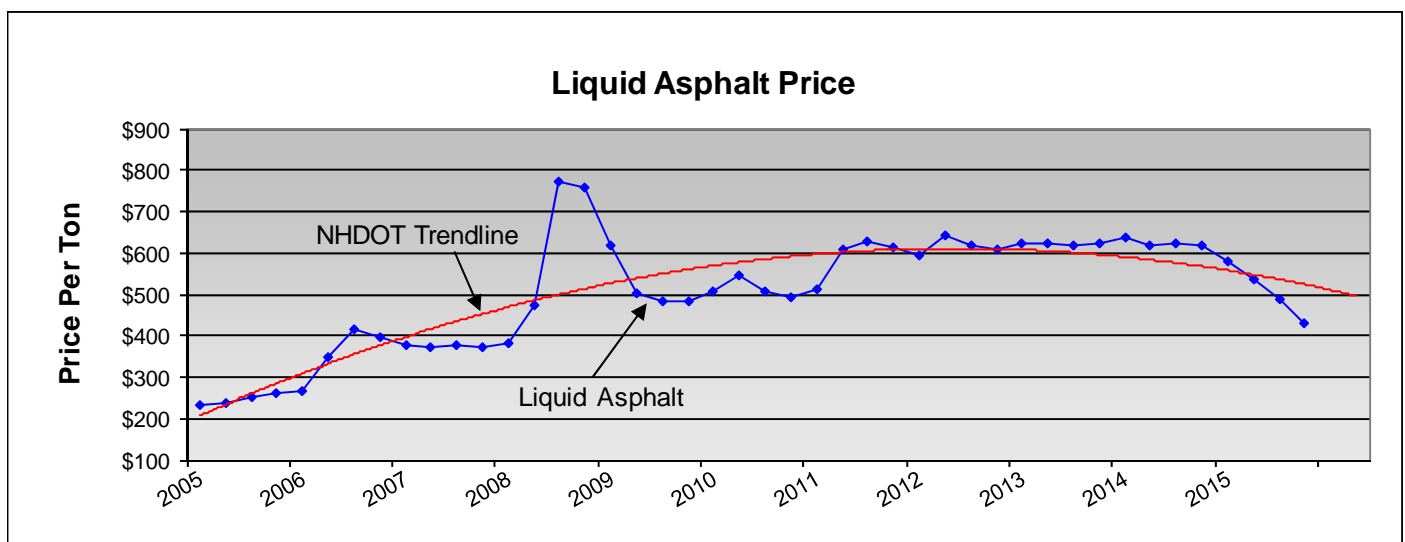
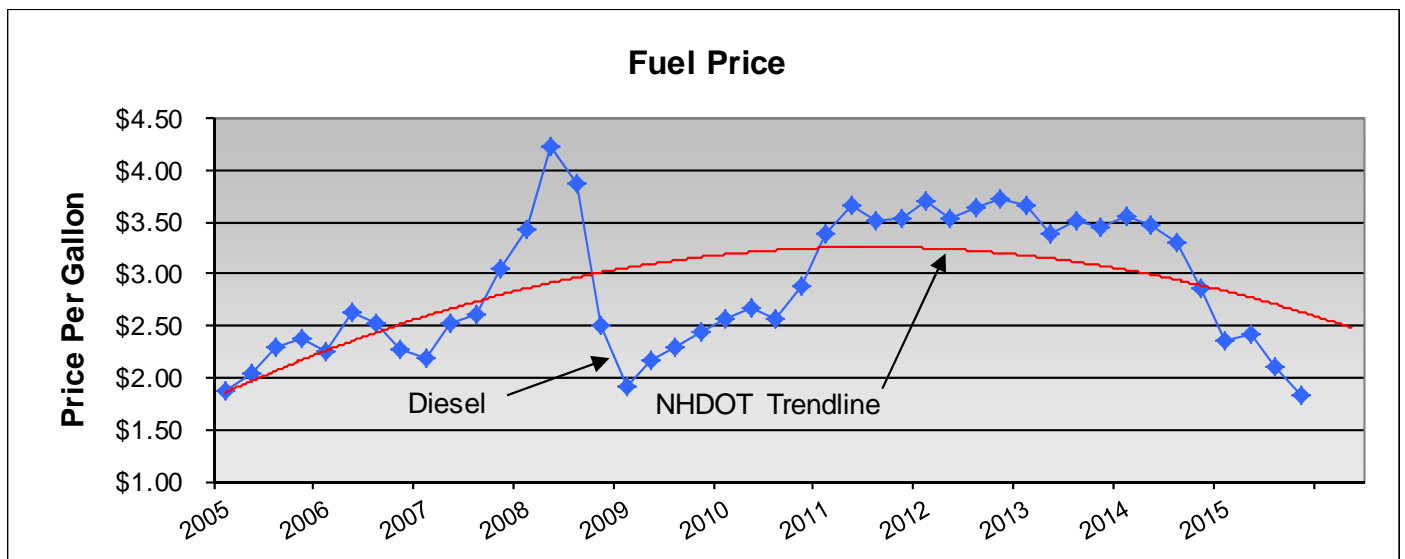


The Index has shown steady growth for 2015 and is currently at an index of 272 which is up 3.4% from the end of 2014. Fuel and Asphalt prices finished the 4th quarter at \$1.84 and \$431.17 respectively. Fuel dipped to a price matching the 1st quarter of 2004 and is down \$1.01 from a year ago. Liquid asphalt is down 19% from end of 2014. All 6 material categories tracked finished the quarter up in price. Crushed Material is up 19.8% and has been trending steadily upward since 2012. Structural Concrete was up 27% in 2014 and up another 22% in 2015 as part of a rebound following a 3 year slide. Hot Mix Asphalt is flat with a 0.1% increase at \$75.58/ton even though we started seeing lower HMA prices in the 2nd half of 2015. Roadway Excavation is up 25.8% to \$10.93 and has been rising steadily since 2011. Structural Steel is up 22.8% at \$1.77 in 2015.

The following Components (weighted as shown) are used to compute the NHDOT CCI:

Hot Mix	46.2%
Crushed Material	14.5%
Roadway Excavation	13.2%
Steel	11.8%
Concrete	10.2%
ReBar	4.1%

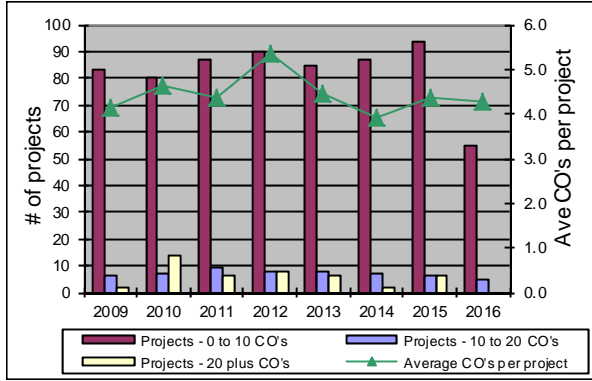
NHDOT Fuel & Liquid Asphalt Prices



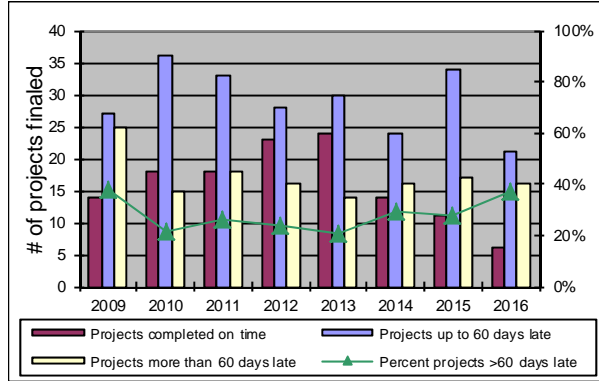
Construction Bureau Performance Measures

Compiled by State Fiscal Year

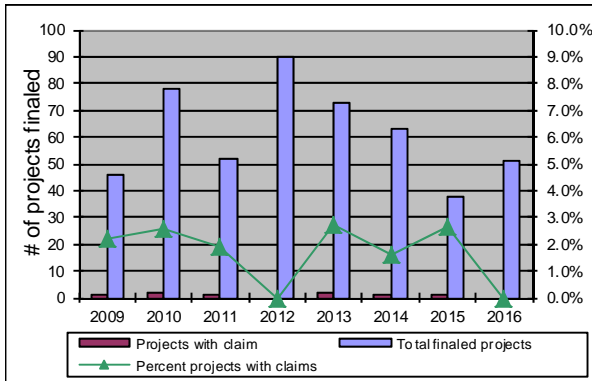
CHANGE ORDERS



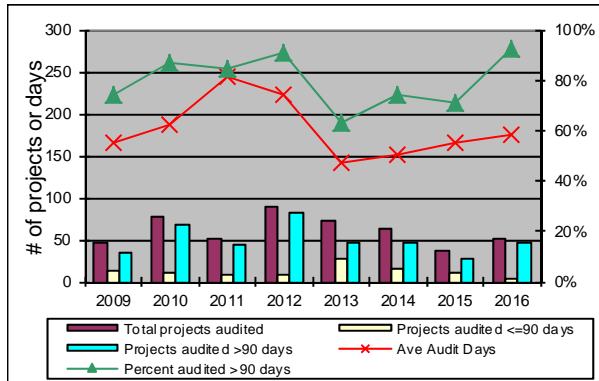
CONTRACT DURATION



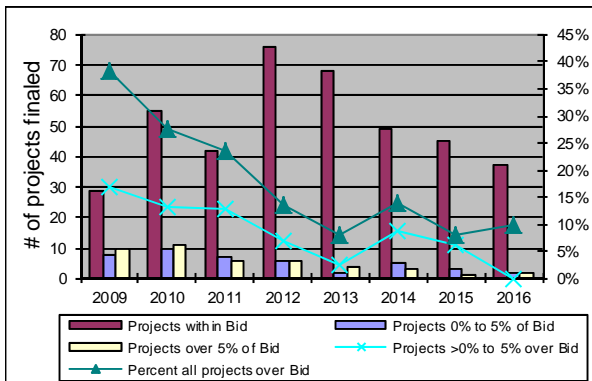
CONTRACTOR CLAIMS



PROJECT AUDIT



BIDS vs. FINAL AMOUNTS



PROJECT ACTIVITY

