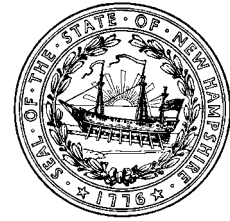


NH Department of Health and Human Services
129 Pleasant Street - State Office Park South
Concord, NH 03301



PRESS RELEASE
FOR IMMEDIATE RELEASE
December 18, 2020

CONTACT
State Joint Information Center
603-223-6169
jic@dos.nh.gov

NH DHHS COVID-19 Update – December 18, 2020

Concord, NH – The New Hampshire Department of Health and Human Services (DHHS) has issued the following update on the new coronavirus, COVID-19.

On Friday, December 18, 2020, DHHS announced 697 new positive test results for COVID-19, for a daily PCR test positivity rate of 4.6%. Today's results include 502 people who tested positive by PCR test and 195 who tested positive by antigen test. There are now 6,863 current COVID-19 cases diagnosed in New Hampshire. Of the results reported today:

- **12/14: 163** new cases today, for an updated total of **756** cases
- **12/15: 26** new cases today, for an updated total of **601** cases
- **12/16: 58** new cases today, for an updated total of **472** cases
- **12/17: 450** new cases today

Test results for previous days are still being processed and the total number of new positives for those days are not yet complete. Updated case counts for prior days will be reflected on the [COVID-19 interactive dashboard](#).

Several cases are still under investigation. Additional information from ongoing investigations will be incorporated into future COVID-19 updates. Of those with complete information, there are seventy-one individuals under the age of 18 and the rest are adults with 51% being female and 49% being male. The new cases reside in Rockingham (163), Strafford (153), Merrimack (90), Hillsborough County other than Manchester and Nashua (76), Belknap (22), Cheshire (16), Coos (14), Carroll (8), Grafton (8), and Sullivan (4) counties, and in the cities of Manchester (68) and Nashua (32). The county of residence is being determined for forty-three new cases.

Community-based transmission continues to occur in the State and has been identified in all counties. Of those with complete risk information, most of the cases are either associated with an outbreak setting or had close contact with a person with a confirmed COVID-19 diagnosis.

DHHS has also announced nine additional deaths related to COVID-19. We offer our sympathies to the family and friends.

- 1 male resident of Cheshire County, 60 years of age and older
- 1 male resident of Grafton County, 60 years of age and older
- 4 female residents of Hillsborough County, 60 years of age and older
- 2 male residents of Hillsborough County, 60 years of age and older
- 1 female resident of Merrimack County, 60 years of age and older

There are currently 273 individuals hospitalized with COVID-19. In New Hampshire since the start of the pandemic, there have been a total of 34,960 cases of COVID-19 diagnosed with 881 (3%) of those having been hospitalized.

Current Situation in New Hampshire

New Hampshire 2019 Novel Coronavirus (COVID-19) Summary Report (updated December 18, 2020, 9:00 AM)

NH Persons with COVID-19	34,960
Recovered	27,459 (79%)
Deaths Attributed to COVID-19	638 (2%)
Total Current COVID-19 Cases	6,863
Persons Who Have Been Hospitalized for COVID-19	881 (3%)
Current Hospitalizations	273
Total Persons Tested at Selected Laboratories, Polymerase Chain Reaction (PCR) ₁	479,655
Total Persons Tested at Selected Laboratories, Antibody Laboratory Tests ₂	34,196
Persons with Specimens Submitted to NH PHL	61,263
Persons with Test Pending at NH PHL ₃	1,763

₁Includes specimens positive at any laboratory and those confirmed by CDC confirmatory testing.

₂Includes specimens tested at the NH Public Health Laboratories (PHL), LabCorp, Quest, Dartmouth-Hitchcock Medical Center, and those sent to CDC prior to NH PHL testing capacity.

₃Includes specimens received and awaiting testing at NH PHL. Does not include tests pending at commercial laboratories.

Number of Tests Conducted by Date of Report to NH DHHS

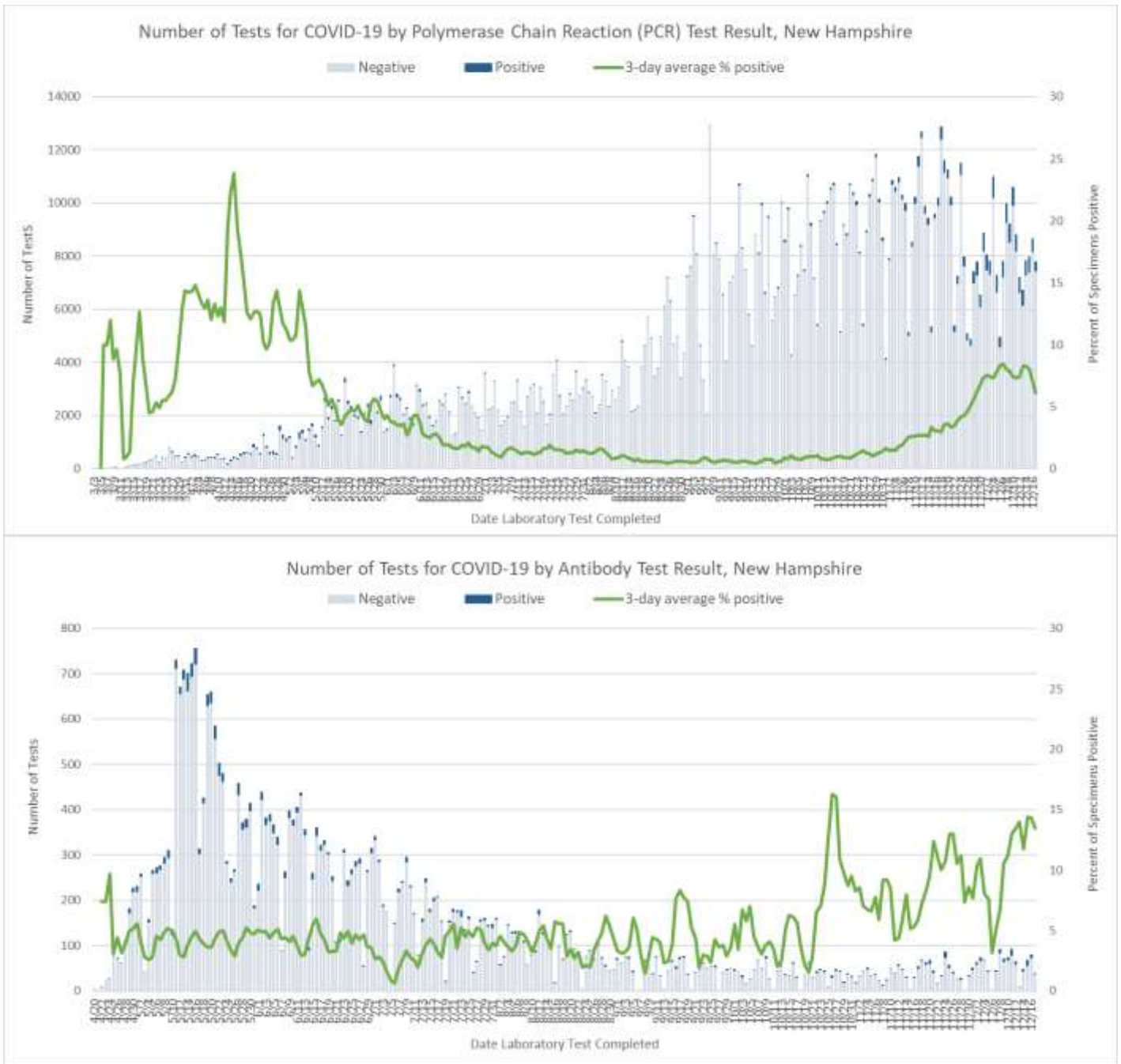
Polymerase Chain Reaction (PCR) Tests								
Testing Laboratory	12/11	12/12	12/13	12/14	12/15	12/16	12/17	Daily Average
NH Public Health Laboratories	1,258	1,329	999	1,253	853	1,240	841	1,110
LabCorp	1,053	1,630	1,854	1,298	1,523	1,399	1,417	1,453
Quest Diagnostics	1,308	1,364	1,747	1,424	1,181	1,249	1,582	1,408
Mako Medical	277	131	249	9	113	663	827	324
Dartmouth-Hitchcock Medical Center	724	516	423	302	738	900	1	515
Other NH Hospital Laboratory	540	490	435	530	552	485	401	490
Other Laboratory*	1,856	1,742	1,040	1,113	1,511	1,926	1,931	1,588
University of New Hampshire**	1,806	1	0	1,917	1,512	816	789	977
Total	8,822	7,203	6,747	7,846	7,983	8,678	7,789	7,867
Antibody Laboratory Tests								
Testing Laboratory	12/11	12/12	12/13	12/14	12/15	12/16	12/17	Daily Average
LabCorp	20	21	1	2	27	20	0	13
Quest Diagnostics	41	34	7	10	18	40	30	26
Dartmouth-Hitchcock Medical Center	10	3	0	7	6	8	0	5

Other Laboratory*	15	7	0	23	10	11	8	11
Total	86	65	8	42	61	79	38	54

* Includes out-of-state public health laboratories, out-of-state hospital laboratories, and other commercial laboratories not already listed in the table.

Note: Patients who had both antibody and polymerase chain reaction (PCR) tests are accounted for in both tables.

** Includes tests conducted at the UNH laboartory and their contracted lab Veritas.



[NH DHHS Daily Update on COVID-19 Archive](#)

For more information, please visit the DHHS COVID-19 webpage at <https://www.nh.gov/covid19>.

###