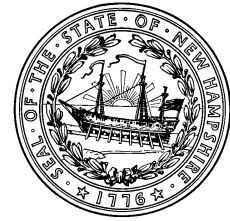


NH Department of Health and Human Services
129 Pleasant Street - State Office Park South
Concord, NH 03301



PRESS RELEASE
FOR IMMEDIATE RELEASE
December 15, 2020

CONTACT
State Joint Information Center
603-223-6169
jic@dos.nh.gov

NH DHHS COVID-19 Update – December 15, 2020

Concord, NH – The New Hampshire Department of Health and Human Services (DHHS) has issued the following update on the new coronavirus, COVID-19.

On Tuesday, December 15, 2020, DHHS announced 670 new positive test results for COVID-19, for a daily PCR test positivity rate of 6.2%. Today's results include 525 people who tested positive by PCR test and 145 who tested positive by antigen test. There are now 6,477 current COVID-19 cases diagnosed in New Hampshire. Of the results reported today:

- **12/10:** 81 new cases today, for an updated total of **1,106** cases
- **12/11:** 91 new cases today, for an updated total of **587** cases
- **12/12:** 1 new case today, for an updated total of **418** cases
- **12/13:** 111 new cases today, for an updated total of **724** cases
- **12/14:** **386** new cases

Test results for previous days are still being processed and the total number of new positives for those days are not yet complete. Updated case counts for prior days will be reflected on the [COVID-19 interactive dashboard](#).

Several cases are still under investigation. Additional information from ongoing investigations will be incorporated into future COVID-19 updates. Of those with complete information, there are eighty-four individuals under the age of 18 and the rest are adults with 49% being female and 51% being male. The new cases reside in Rockingham (223), Merrimack (82), Hillsborough County other than Manchester and Nashua (63), Strafford (62), Belknap (54), Cheshire (22), Carrol (20), Grafton (14), Coos (5), and Sullivan (2) counties, and in the cities of Manchester (65) and Nashua (37). The county of residence is being determined for twenty-one new cases.

Community-based transmission continues to occur in the State and has been identified in all counties. Of those with complete risk information, most of the cases have either had close contact with a person with a confirmed COVID-19 diagnosis or are associated with an outbreak setting.

There are currently 252 individuals hospitalized with COVID-19. In New Hampshire since the start of the pandemic, there have been a total of 32,545 cases of COVID-19 diagnosed with 863 (3%) of those having been hospitalized.

Current Situation in New Hampshire

New Hampshire 2019 Novel Coronavirus (COVID-19) Summary Report
(data updated December 15, 2020, 9:00 AM)

NH Persons with COVID-19 ₁	32,545
Recovered	25,464 (78%)
Deaths Attributed to COVID-19	604 (2%)
Total Current COVID-19 Cases	6,477
Persons Who Have Been Hospitalized for COVID-19	863 (3%)
Current Hospitalizations	252
Total Persons Tested at Selected Laboratories, Polymerase Chain Reaction (PCR) ₂	471,037
Total Persons Tested at Selected Laboratories, Antibody Laboratory Tests ₂	34,009
Persons with Specimens Submitted to NH PHL	60,722
Persons with Test Pending at NH PHL ₃	660

₁Includes specimens positive at any laboratory and those confirmed by CDC confirmatory testing.

₂Includes specimens tested at the NH Public Health Laboratories (PHL), LabCorp, Quest, Dartmouth-Hitchcock Medical Center, and those sent to CDC prior to NH PHL testing capacity.

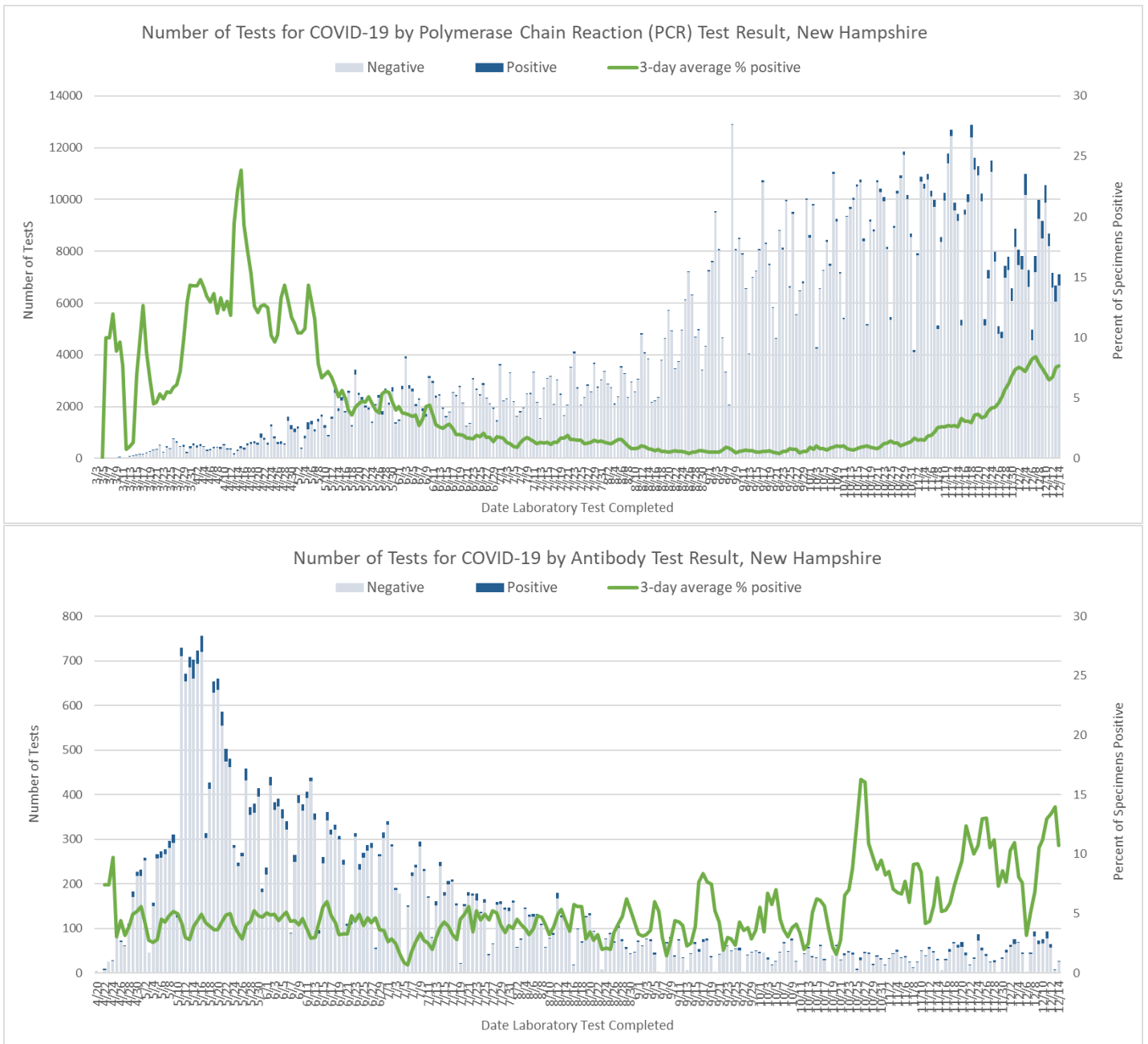
₃Includes specimens received and awaiting testing at NH PHL. Does not include tests pending at commercial laboratories.

Number of Tests Conducted by Date of Report to NH DHHS

Polymerase Chain Reaction (PCR) Tests								
	12/08	12/09	12/10	12/11	12/12	12/13	12/14	Daily Average
NH Public Health Laboratories	1,700	908	1,703	1,258	1,329	999	1,253	1,307
LabCorp	1,694	1,333	1,930	1,053	1,625	1,802	1,293	1,533
Quest Diagnostics	1,249	1,839	917	1,308	1,364	1,747	1,385	1,401
Mako Medical	5	400	996	277	131	249	9	295
Dartmouth-Hitchcock Medical Center	921	1,200	790	720	515	423	0	653
Other NH Hospital Laboratory	660	627	576	537	484	434	395	530
Other Laboratory*	2,218	2,074	2,165	1,770	1,719	1,010	871	1,690
University of New Hampshire**	1,539	782	1,483	1,773	1	0	1,917	1,071
Total	9,986	9,163	10,560	8,696	7,168	6,664	7,123	8,480
Antibody Laboratory Tests								
	12/08	12/09	12/10	12/11	12/12	12/13	12/14	Daily Average
LabCorp	20	22	19	20	21	1	2	15
Quest Diagnostics	41	28	31	41	34	7	9	27
Dartmouth-Hitchcock Medical Center	15	6	11	10	3	0	0	6
Other Laboratory*	10	15	12	15	7	0	10	10
Total	86	71	73	86	65	8	21	59

* Includes out-of-state public health laboratories, out-of-state hospital laboratories, and other commercial laboratories not listed in the above table.

** Includes tests conducted at the UNH laboratory and their contracted lab Veritas.



[NH DHHS Daily Update on COVID-19 Archive](#)

For more information, please visit the DHHS COVID-19 webpage at <https://www.nh.gov/covid19>.

###