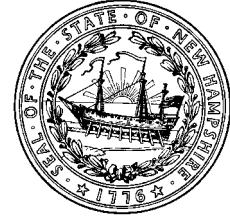


NH Department of Health and Human Services  
129 Pleasant Street - State Office Park South  
Concord, NH 03301



**PRESS RELEASE**  
**FOR IMMEDIATE RELEASE**  
**January 10, 2021**

**CONTACT**  
State Joint Information Center  
603-223-6169  
[jic@dos.nh.gov](mailto:jic@dos.nh.gov)

## **NH DHHS COVID-19 Update – January 10, 2021**

**Concord, NH** – The New Hampshire Department of Health and Human Services (DHHS) has issued the following update on the new coronavirus, COVID-19.

On Sunday, January 10, 2021, DHHS announced 797 new positive test results for COVID-19, for a current PCR test positivity rate of 7.5%. Today's results include 672 people who tested positive by PCR test and 125 who tested positive by antigen test. There are now 6,454 current COVID-19 cases diagnosed in New Hampshire. Of the results reported today:

- **12/31:** 5 new cases today, for an updated total of **1,062** cases
- **1/1:** 33 new cases today, for an updated total of **688** cases
- **1/3:** 2 new cases today, for an updated total of **460** cases
- **1/8:** 687 new cases today, for an updated total of **1,010** cases
- **1/9:** 70 new cases

Test results for previous days are still being processed and the total number of new positives for those days are not yet complete. Updated case counts for prior days will be reflected on the [COVID-19 interactive dashboard](#).

Several cases are still under investigation. Additional information from ongoing investigations will be incorporated into future COVID-19 updates. Of those with complete information, there are one hundred and thirty-eight individuals under the age of 18 and the rest are adults with 53% being female and 47% being male. The new cases reside in Rockingham (154), Hillsborough County other than Manchester and Nashua (127), Strafford (84), Cheshire (80), Merrimack (74), Sullivan (30), Belknap (24), Grafton (22), Carroll (18), and Coos (8) counties, and in the cities of Manchester (83) and Nashua (58). The county of residence is being determined for thirty-five new cases.

Community-based transmission continues to occur in the State and has been identified in all counties. Of those with complete risk information, most of the cases are either associated with an outbreak setting or have had close contact with a person with a confirmed COVID-19 diagnosis.

DHHS has also announced seven additional deaths related to COVID-19. We offer our sympathies to the family and friends.

- 1 female resident of Belknap County, 60 years of age and older
- 2 female residents of Hillsborough County, 60 years of age and older
- 1 male resident of Merrimack County, 60 years of age and older
- 2 female residents of Rockingham County, 60 years of age and older
- 1 male resident of Coos County, 60 years of age and older

There are currently 262 individuals hospitalized with COVID-19. In New Hampshire since the start of the pandemic, there have been a total of 51,600 cases of COVID-19 diagnosed.

## Current Situation in New Hampshire

### New Hampshire 2019 Novel Coronavirus (COVID-19) Summary Report (updated January 10, 2021, 9:00 AM)

NH Persons with COVID-19	51,600
Recovered	44,277 (86%)
Deaths Attributed to COVID-19	869 (2%)
Total Current COVID-19 Cases	6,454
Current Hospitalizations	262
Total Persons Tested at Selected Laboratories, Polymerase Chain Reaction (PCR) <sub>1</sub>	542,017
Total Persons Tested at Selected Laboratories, Antibody Laboratory Tests <sub>2</sub>	35,206
Persons with Specimens Submitted to NH PHL	N/A
Persons with Test Pending at NH PHL <sub>3</sub>	460

<sub>1</sub>Includes specimens positive at any laboratory and those confirmed by CDC confirmatory testing.

<sub>2</sub>Includes specimens tested at the NH Public Health Laboratories (PHL), LabCorp, Quest, Dartmouth-Hitchcock Medical Center, and those sent to CDC prior to NH PHL testing capacity.

<sub>3</sub>Includes specimens received and awaiting testing at NH PHL. Does not include tests pending at commercial laboratories.

## Number of Tests Conducted by Date of Report to NH DHHS

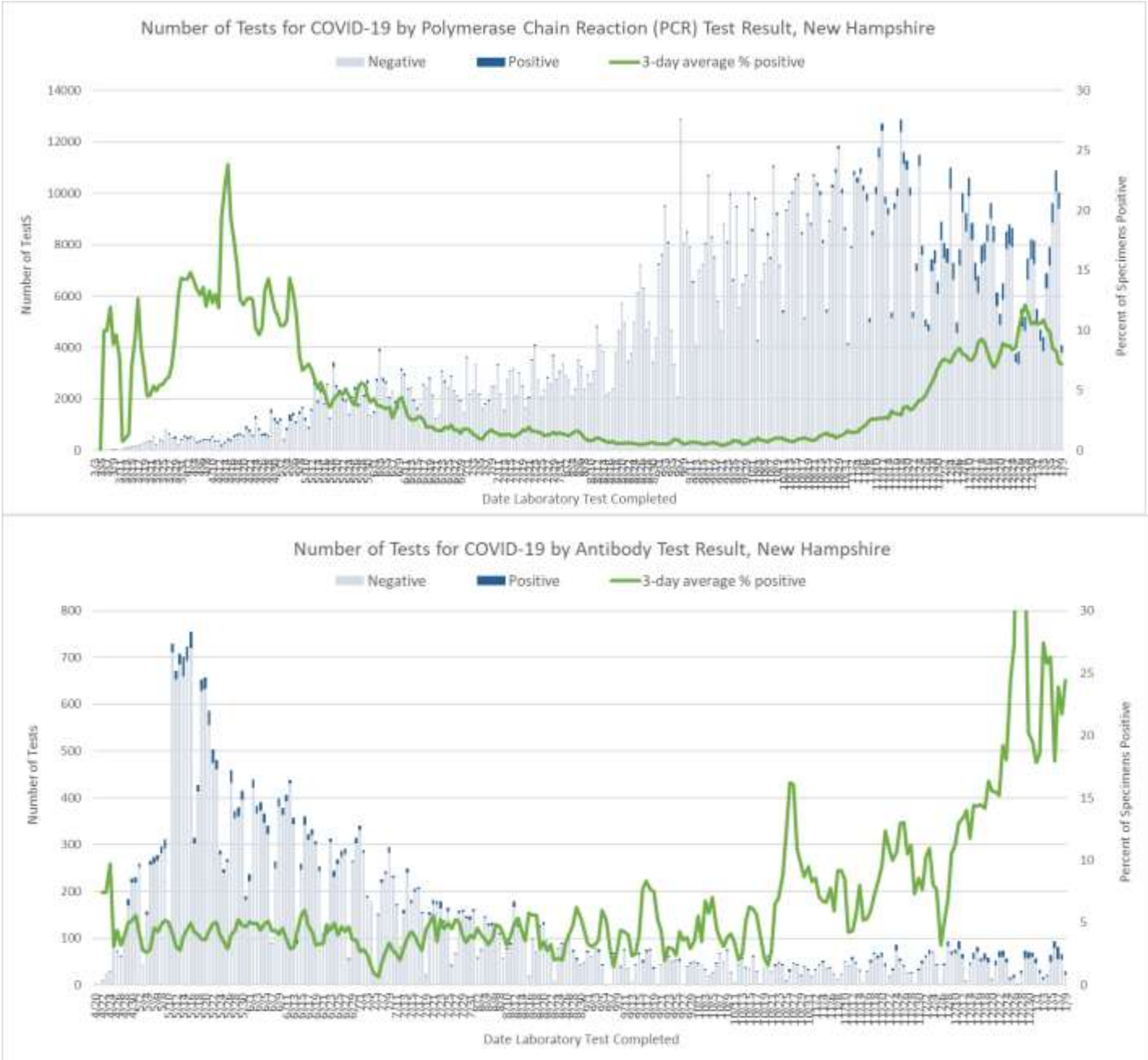
Polymerase Chain Reaction (PCR) Tests								
Testing Laboratory	1/03	1/04	1/05	1/06	1/07	1/08	1/09	Daily Average
NH Public Health Laboratories	315	366	614	1,015	881	911	0	586
LabCorp	1,051	1,077	1,532	1,152	1,519	1,586	1,079	1,285
Quest Diagnostics	963	764	397	694	1,079	826	960	812
Mako Medical	188	2	140	495	781	622	121	336
Dartmouth-Hitchcock Medical Center	417	433	530	1,096	874	658	2	573
Other NH Hospital Laboratory	303	465	545	520	541	480	290	449
Other Laboratory*	1,159	2,246	2,836	3,912	3,997	3,907	1,633	2,813
University of New Hampshire**	0	1,533	1,319	734	1,214	1,035	0	834
Total	4,396	6,886	7,913	9,618	10,886	10,025	4,085	7,687
Antibody Laboratory Tests								
Testing Laboratory	1/03	1/04	1/05	1/06	1/07	1/08	1/09	Daily Average
LabCorp	7	0	20	32	24	11	0	13
Quest Diagnostics	10	8	19	44	33	24	29	24

Dartmouth-Hitchcock Medical Center	0	6	6	10	7	9	0	5
Other Laboratory*	0	6	11	7	13	13	0	7
Total	17	20	56	93	77	57	29	50

\* Includes out-of-state public health laboratories, out-of-state hospital laboratories, and other commercial laboratories not already listed in the table.

Note: Patients who had both antibody and polymerase chain reaction (PCR) tests are accounted for in both tables.

\*\* Includes tests conducted at the UNH laboratory and their contracted lab Veritas.



[NH DHHS Daily Update on COVID-19 Archive](#)

For more information, please visit the DHHS COVID-19 webpage at <https://www.nh.gov/covid19>.

###