

**New Hampshire Population Projections
for State and Counties
2010 to 2030
Update: November 2006**

1. Introduction

The New Hampshire Office of Energy and Planning (formerly the Office of State Planning) has been preparing projections or forecasts of future population for the state and its political subdivisions since at least 1964. The projections have been used by a wide variety of government agencies and private interests to guide public policy, gauge market potential and estimate future target populations. The projections can be applied directly and unaltered to guide public or private endeavors. The projections can also serve as a *beginning*, or point of departure, in developing further projection efforts or refining existing ones. The OEP encourages the use of these projections to evaluate other projections. The U.S. Bureau of the Census has projected New Hampshire's population independently from the Office of Energy and Planning (OEP).

These projections, **Update: November 2006**, is the third iteration based on the 2000 U.S. Census. Previous OEP projections were published in December 2002 and September 2004. The three sets of projections combine census data with birth and death data from the NH Bureau of Vital Records to develop survival and fertility rates and age-specific migration rates. The births and deaths span the nineties and allow rates to be specific to New Hampshire. Those rates are used once again in this update.

Only the county crude migration rates were changed for **Update: November 2006**. The affects of the new migration rates are:

- Less growth for the state. **Update: October 2006** projections assume a population of about 73,000 persons lower in 2025 than the projections of 2004.
- The proportional distribution of population growth among counties remains the same as the 2004 projections. This, after making slight modifications to county growth to the December 2002 effort. The 2004 projections provided slightly more growth for Belknap, Merrimack and Strafford counties and slightly less growth for Hillsborough County – relative to the 2002 projections. Again, the proportional distribution of growth here is the same as that of the 2004 effort.

The updated crude migration rates are based on the latest trends between 2000 and 2005.

The projections are processed by a complete cohort survival method. This technique breaks the population into 36 age/gender cohorts. Each cohort has its' own survival rate and migration rate. Fertility rates are also applied on an age-specific basis. The technique is processed by spreadsheet software, programmed by RLS Information Services of Berne, NY.

In 2002, (the then) OSP received augmented funding and technical support from the NH Department of Health and Human Services, Division of Elderly and Adult Services, for the creation of the software and the establishing of death, fertility and age migration rates. The support provided by the DHHS is part of its mandate under RSA 152:2 (Senate Bill 132), which directs DHHS to coordinate a review of demographic trends in New Hampshire and the impact of such trends.

2. State Projections

The Long Term - 1960 to 2000

New Hampshire has experienced strong population growth for 40 years. The consistency of the growth trend over such a long period of time is remarkable. The reason for the sustained growth is a source of perennial debate. Most of these debates are subjective in nature. This is probably due to the complexity, multiplicity and interrelatedness of the factors determining growth.

It is known that the nation's population centers began to decentralize before World War II. Decentralization continues to this day, driven by a complex and intertwined set of social, economic, demographic and technological factors. Early in the movement, the rising cost of labor stimulated industry to build one-story factories that facilitated assembly lines and automation. The land for such factories was too expensive in or near centralized business districts so new plants were built just outside of existing population centers.

After WW II, existing decentralizing forces were reinforced. National mortgage insurance programs (FHA and VA) favored new construction over renovation. The value of land on small marginal farms was kept low by the lack of heavy farm subsidies. Road building programs, initially begun by state governments, allowed for more extensive use of cars and trucks which allowed a lower density land use pattern. Then, in the mid-fifties, the federal government began the interstate highway system. This road network became its own force for decentralization as well as augmenting existing decentralizing pressures. By the early to mid-sixties, New Hampshire was connected by two interstate roads to the Boston Metropolitan Area. In fact, for demographic purposes, 1960 is a benchmark in the NH experience.

In the sixties, New Hampshire grew more than it did in the 40's and 50's combined, and the growth continues to this day. Table 1 shows some detail of the 40-year growth trend. Since the completion of the interstate system, the fundamentals for decentralization have broadened. Modern industry is no

longer tied to port facilities, resource base or even market location. It makes little difference where a software or data processing operation is located. Manufacturers of high value, lightweight electronic products have similar freedom of location.

Table 1
Change in Total Population for New Hampshire
1960 to 2000

Time Period	Total Population		Average Persons Per-Year Change
	% Change	Rank Among States	
1960 - '70	21.2	9th	13,000
1970 - '80	24.8	13th	18,200
1980 - '90	20.4	6th	18,800
1990 - '00	11.5	22nd	12,600
1995 - '00	7.8	16th	18,000

Update: November 2006

Often, industrial decision makers will rank an area's lifestyle as being as important as business conditions. Economic evolution has made low crime rates, good schools, and recreational opportunities the new "industrial location" factors. As telecommunications increase in speed and capability and decrease in cost, more industries are likely to enjoy ever-greater freedom of location in the future.

In the nineties, NH experienced a brief growth trend change. Table 1 shows an average annual increase of 12,600 persons. This lower growth for the nineties is the result of a severe economic recession in NH. From 1989 to 1992 the state lost 21,000 jobs. In addition, Pease Air Force Base was closed; 6,000 people had been living on the base. However, once the economic troubles passed, the state returned to the established trend. This is clearly shown in Table 1; the growth rate for the second half of the nineties is almost exactly that of the two previous decades.

Present Trends – 2000 to 2005 - State

Table 2 shows the year-by-year population changes since 2000. The trend shown in this table is a departure from the long-term trend of 1960 to 2000. Growth has declined from 19,000 persons per year to 11,000. Depending on underlying factors and their timing, the trend may or may not be significant. The trend could be a result of short-term housing economics. For instance, recent price spikes may be in a corrective phase. Once the price inflation is wrung out, the state might return to its more accustomed higher levels of growth. Interest rates might also be a factor for the steady decline in population change. Whatever the factors, their timing is counter to the normal (1960–2000) New Hampshire experience. *The decline occurred during favorable economic conditions.* In fact, at the beginning of this period, there was a short, mild recession. As economic conditions improved, the decline continued.

Since 1960, New Hampshire’s growth rate has been sensitive to economic conditions. Growth would always decline during and immediately following a recession. In the most severe recession since 1960 (1990-1991), the state’s growth was literally zero. In the 2000–2005 period, the relationship between the economy and population growth was roughly inverse, a first for NH.

Table 2

Total Population			Approximate Migration				
Year	Population	Change	Net Amt	Out		In	
				Amt	% Chg	Amt	% Chg
2000	1,240,000						
2001	1,259,000	19,000	10,681	35,812	--	46,493	--
2002	1,274,000	15,000	7,851	36,644	2.3	44,495	-4.3
2003	1,287,000	13,000	5,852	37,021	1.0	42,873	-3.6
2004	1,299,000	12,000	3,187	38,107	2.9	41,294	-3.7
2005	1,310,000	11,000	2,646	38,726	1.6	41,372	0.2

Update: November 2006

Source: U.S. Bureau of the Census, State-to-State Migration Data

The trends shown in Table 2, occurring during a favorable economic climate, are believed to be strong indicators that fundamental, long term factors are reducing the state’s growth rate. This, as opposed to short-term forces such as interest rates or a national recession. The long-term factors are associated with changes in state and regional migration patterns. The northeast region has been at a competitive disadvantage since at least the late seventies. Massachusetts is now experiencing population loss and New Hampshire’s out-migration has increased incrementally since 2000. Out-migrants from both states are showing a preference for southern states.

New Hampshire has made several economic transitions in the past. Once agrarian, the state became a manufacturing powerhouse based on textiles and leather goods. As those industries declined, NH was able to produce higher valued goods such as fabricated metal products and light electrical products. At the moment, the state appears to be making a good transition to a post-manufacturing economy. However, it is likely that this transition will proceed unevenly and under intense competition from Sun Belt states and other countries.

New Hampshire has been the fastest growing state in the northeast since the sixties. This will likely not change if actual growth rates approximate the projections contained here.

These November 2006 projections assume lower growth rates than the projections released in September 2004. While the growth rates are only mildly lower, the cumulative effect results in 73,000 fewer people in NH in 2025. The age specific migration rates remain the same as those used in the September 2004 effort; therefore, shifts in age structure are minimal between the two sets of projections.

Assumptions - State

The current reduced growth rates are assumed to be results of factors that are long term in nature. The assumptions are based on two principal sets of circumstances: changed migration patterns and the continuing economic disadvantages of the northeast region.

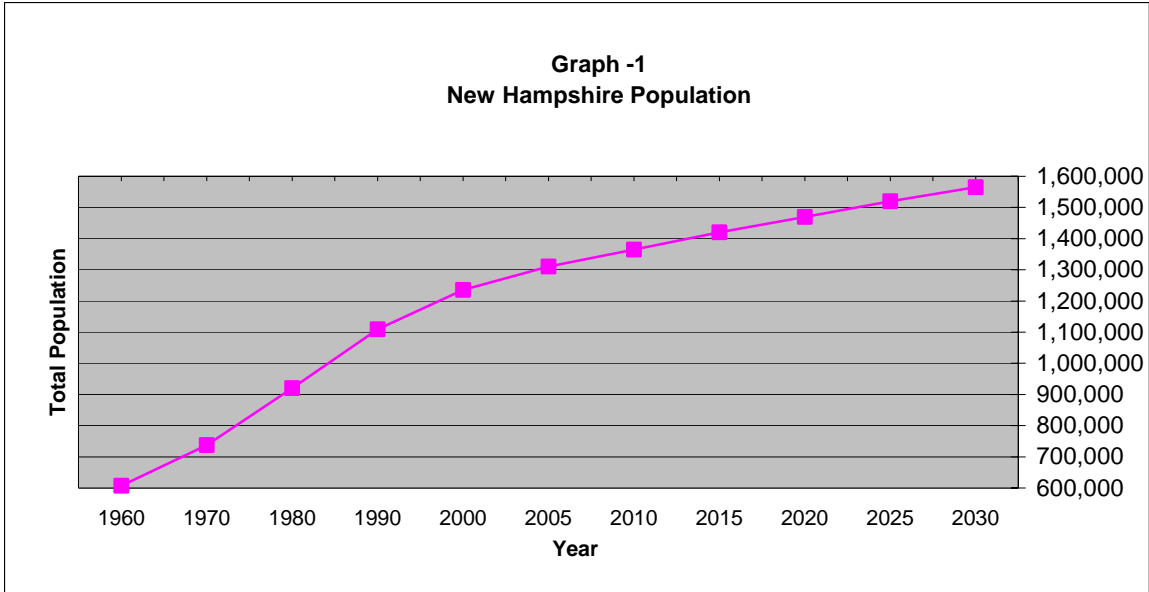
- As stated, the state's migration patterns held remarkably steady for 40 years. Recently the patterns have changed. The changes are not dramatic but a consistent increase in out-migration has occurred since 2000. The resulting reduced growth rates are assumed to continue through the projection period.
- For 40 years NH has been a northeast anomaly - a high-growth state in a low-growth (or stagnant) region. The competitive disadvantages of the northeast are now impinging on the state's rate of growth.
 - Massachusetts, New Hampshire's chief supplier of migrants, has lost population (19,000) since 2003.
 - The increase in Massachusetts' out-migration is choosing southern states while NH will remain the number one destination.
 - The increase in New Hampshire's out-migration is also due to migrants choosing southern states.
- The assumed migration patterns for persons aged 65+ will be similar to that of the nineties. (This assumption should receive close monitoring in the years ahead.)
- New Hampshire will continue to lose manufacturing jobs, much like the nation, and continue to be subject to intense inter-regional and international competition. The state will also continue to transition into a post manufacturing economy reasonably

well.

Table 3
New Hampshire Population Change, History and Projected
1960 to 2030

Year	Total Population	Population Change During Interval	Average Annual Change: Persons per Year	Time Interval: Years
1960	606,921			
1970	737,681	130,760	13,076	10
1980	920,610	182,929	18,293	10
1990	1,109,252	188,642	18,864	10
2000	1,235,000	125,748	12,575	10
2005	1,310,000	75,000	16,000	5
2010	1,365,000	55,000	11,000	5
2015	1,420,000	55,000	11,000	5
2020	1,470,000	50,000	10,000	5
2025	1,520,000	50,000	10,000	5
2030	1,565,000	45,000	9,000	5

Source: U.S. Census and NH - OEP projections
Update: November 2006



3. County Projections

Assumptions - Counties

Given the projected state totals, the next phase of the projection process is to allocate total state population to the state's ten counties. Casual analysis divides the state into the slow growing north and the fast growing south. Table 4 shows that this is largely true, but there are exceptions.

**Table 4
Trend of Counties' Share of State Population, 1960 to 2000**

County	County Share of State Total				
	1960	1970	1980	1990	2000
Belknap	4.8	4.4	4.7	4.4	4.6
Carroll	2.6	2.5	3.0	3.2	3.5
Cheshire	7.1	7.1	6.8	6.3	6.0
Coos	6.1	4.6	3.8	3.1	2.7
Grafton	8.0	7.4	7.1	6.8	6.6
Hillsborough	29.4	30.4	30.0	30.3	30.8
Merrimack	11.2	11.0	10.7	10.8	11.0
Rockingham	16.3	18.8	20.7	22.2	22.4
Strafford	9.9	9.5	9.3	9.4	9.1
Sullivan	4.6	4.2	3.9	3.5	3.3

Cheshire, Sullivan, and Grafton counties lost state share, and Coos County lost significantly. Rockingham gained significantly, the largest change in either direction. The remainder of the changes are fairly modest and are at least partly related to *county size*. In 1960, Hillsborough County was by far the largest. To maintain this position, or even gain in state share (as it did), required impressive *numerical growth*. On the other hand, Carroll County increased its share rather notably. Carroll had the smallest population base in 1960 and now ranks 8th among the ten counties.

Since 1960, New Hampshire's population has increased by about 703,000 people. More than 60% of this growth occurred in Hillsborough and Rockingham counties. The primary reasons, of course, are the forces of decentralization, centered in the Boston Metropolitan area, and following the I-93 and I-95 corridors. How these two counties develop (relative to the state) in the next 25 years will have a corresponding impact on most other counties in the state.

Present Trends – 2000 to 2005 – Counties

There have been no changes in the structure of the state's growth at the county level since 2000. These projections do assume the same mild shifts in county shares of the state's population, as was assumed in the 2004 projection effort (see Table 5).

The assumptions that guide county projections are:

- Decentralization forces will play a role in county distribution. As stated, business investment and population settlement will likely have even greater freedom of location in the future. Because of this, a shift in growth, away from Hillsborough and Rockingham, is assumed. This assumption is coupled with the decreasing availability and increasing cost of land in these two counties.
- Merrimack and Carroll counties in particular will likely gain in state share of growth.
- Employment at the Portsmouth Naval Shipyard in Rockingham County will continue at about the same level.
- At the moment, Coos County is at an inflection point in its economy and possibly in its demographics. Recently, a pulp mill and a paper mill closed, resulting in the loss of 358 high-paying jobs. However, there are positive developments as well. The construction and resulting payroll of a new prison, along with the expansion of another, will cushion the blow. There are also indications that the recreational and tourism industries will fill in some of the loss as well.

A comprehensive study, *Coos County Perspectives*, by the Economic and Labor Market Information Bureau, postulates very mild population declines in the near-term followed by mild population gains by 2010. The projections here assume mild decline to 2010 and then a mild

reversal through the projection period.

The ELMIB study approaches projections on a year-by-year and a more micro basis than OEP's approach. Neither effort is forecasting dramatic population change in the county. Projection users that have particular interest in Coos County are urged to become familiar with the ELMIB study.

Table 5 shows projected county shares of total state population.

**Table 5
Historic and Projected County Shares of State Population**

County	County Share of State Totals					Projected County Shares of State				
	1960	1970	1980	1990	2000	2010	2015	2020	2025	2030
Belknap	4.8	4.4	4.7	4.4	4.6	4.7	4.7	4.7	4.7	4.7
Carroll	2.6	2.5	3.0	3.2	3.5	3.7	3.7	3.8	3.9	3.9
Cheshire	7.1	7.1	6.7	6.3	6.0	5.5	5.7	5.7	5.7	5.7
Coos	6.1	4.6	3.8	3.1	2.7	2.3	2.2	2.2	2.2	2.2
Grafton	8.0	7.4	7.1	6.8	6.6	6.5	6.5	6.4	6.4	6.4
Hillsborough	29.4	30.4	30.0	30.3	30.8	30.6	30.4	30.3	30.2	30.2
Merrimack	11.2	11.0	10.7	10.8	11.0	11.3	11.3	11.5	11.6	11.6
Rockingham	16.3	18.8	20.7	22.2	22.4	22.6	22.5	22.5	22.4	22.4
Strafford	9.9	9.5	9.3	9.4	9.1	9.1	9.1	9.1	9.1	9.1
Sullivan	4.6	4.2	3.9	3.5	3.3	3.3	3.3	3.3	3.3	3.3

Update: November 2006

Combining the state projections with the projected county shares results in projected population by county. Table 6 shows the resulting populations.

**Table 6
Projected County Population Compared to Two Latest Censuses**

County	U.S. Census		Projected Population				
	1990	2000	2010	2015	2020	2025	2030
Belknap	49,216	56,325	64,838	67,450	69,972	72,504	74,494
Carroll	35,410	43,666	50,369	53,676	57,036	59,888	61,818
Cheshire	70,121	73,825	78,624	81,650	84,672	87,248	89,831
Coos	34,828	33,111	33,170	33,228	33,369	34,656	35,839
Grafton	74,929	81,743	88,862	92,442	95,109	97,736	100,630
Hillsborough	336,073	380,841	417,281	432,816	446,586	460,408	474,039
Merrimack	120,005	136,225	154,109	161,596	169,050	176,620	181,853
Rockingham	245,845	277,359	308,217	320,494	331,191	341,848	351,656
Strafford	104,233	112,233	124,488	129,504	134,211	138,928	142,885
Sullivan	38,592	40,458	45,182	47,144	48,804	50,464	51,958
N.H. (in '000's)	1,109	1,236	1,365	1,420	1,470	1,520	1,565

Update: October 2006

Tables showing age detail for counties and the State follow this text.

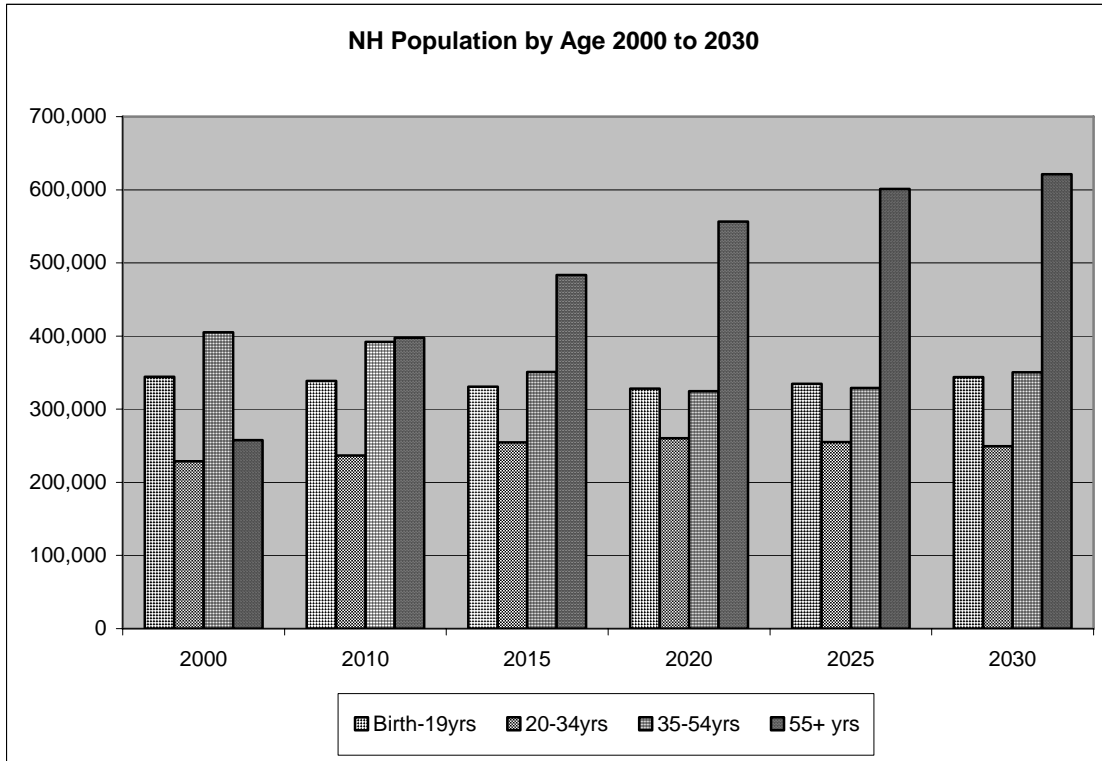
Population projections are not predictions. The projection process attempts to identify probable assumptions and then extend those assumptions, via a mathematical technique, into the future. By themselves, the projections herein can serve as a general guide to likely future population trends. The projections can also serve as a *beginning* to alternative projection efforts. The OEP encourages data users to view the projections herein as a point of departure in developing their own projections. Data users are also encouraged to use OEP's projections to evaluate other projection efforts. The U.S. Bureau of the Census has projected New Hampshire's population independently from the Office of Energy and Planning.

Persons with questions regarding these projections should contact the NH Office of Energy and Planning, 57 Regional Drive, Concord, NH, 03301. Telephone (603) 271-2155. TDD Access: Relay NH 1-800-735-2964

Highlights of the Projections

- The projections show an increase of 260,000 people (20%) from 2005 to 2030.
- The population age, birth to 14, is projected to decline 7% by the year 2015 then increase to about the same level it was in 2000 by the end of the projection period. The reason for this fluctuation is the aging of people born from 1977 to 1994. This cohort, often called the "echo generation" is relatively large. This segment of the population comprises the children of the post-war baby boom generation and is expected to be followed by a smaller age cohort. Sometime after 2015, the children of the echo generation will enter the childbearing years and the birth-to-14 cohort will increase again.
- The echo generation (the children of the post-war boomers) will move into middle age during the projection period. In 2000 they were aged from about 6 to 23 years old. By 2030, the oldest members of this generation will be about 54 years old.
- Overall, the projections show an aging population. The post-war baby boom (born 1946 to 1964) plays a central role in this process. The baby boom approaches the age of 65 in 2010. Up to that year the state's percentage of population 65+ changes little. Between 2000 and 2005 it increased 0.5%. After 2010 the proportion increases about ten times as fast. In 2000, 12% of NH's population was 65 or older. The projections show this proportion may be about 14% in 2010 and about 28% in 2030.

- While not as strong a force as the post-war boomers, low growth or declines in younger age groups contribute to the ageing process in a negative manner.



**New Hampshire Office of Energy and Planning
Population Projections
State of New Hampshire**

<u>Age</u>	Census	Projections Published - November 2006					Percent Change	
	2000	2010	2015	2020	2025	2030	'00 - '20	'00 - '30
00-04	75,685	69,830	72,004	74,658	75,367	74,546	-1.4	-1.5
05-09	88,537	81,120	79,512	81,940	85,523	87,058	-7.5	-1.7
10-14	93,255	92,565	86,276	84,425	87,588	92,250	-9.5	-1.1
15-19	86,688	95,230	93,044	87,281	86,253	89,963	0.7	3.8
00-19	344,165	338,745	330,836	328,304	334,731	343,817	-4.6	-0.1
20-24	68,766	83,492	83,799	81,742	77,271	77,356	18.9	12.5
25-29	71,355	79,157	86,107	86,555	84,752	80,222	21.3	12.4
30-34	88,706	74,149	84,746	92,128	93,160	91,968	3.9	3.7
20-34	228,827	236,798	254,652	260,425	255,183	249,546	13.8	9.1
35-39	109,654	77,764	74,692	85,286	93,458	95,439	-22.2	-13.0
40-44	111,525	88,199	75,705	72,647	83,476	92,395	-34.9	-17.2
45-49	98,117	107,933	87,963	75,481	73,272	85,013	-23.1	-13.4
50-54	85,869	118,159	112,382	91,391	78,987	77,399	6.4	-9.9
35-54	405,165	392,055	350,742	324,805	329,193	350,246	-19.8	-13.6
55-59	62,664	109,500	123,267	116,760	95,428	83,261	86.3	32.9
60-64	46,995	96,677	114,432	128,574	122,437	100,861	173.6	114.6
65-69	41,143	69,917	99,674	118,218	133,984	128,563	187.3	212.5
70-74	37,184	44,387	62,606	89,400	107,214	122,802	140.4	230.3
75-79	30,593	31,340	37,316	52,621	76,037	92,513	72.0	202.4
80-84	20,819	23,686	23,341	27,770	39,586	57,963	33.4	178.4
85+	18,231	22,073	23,015	23,135	26,266	35,353	26.9	93.9
55 +	257,629	397,580	483,651	556,478	600,952	621,316	116.0	141.2
Total	1,235,786	1,365,178	1,419,880	1,470,012	1,520,059	1,564,925	19.0	26.6
5-14	181,792	173,685	165,788	166,365	173,111	179,308	-8.5	-1.4
15-24	155,454	178,722	176,843	169,023	163,524	167,319	8.7	7.6
25-64	674,885	751,538	759,294	748,822	724,970	706,558	11.0	4.7
65+	147,970	191,403	245,952	311,144	383,087	437,194	110.3	195.5

- Hillsborough and Rockingham counties account for 53% of the state's population

NH – OEP Projections
Update: November 2006

throughout the projection period. Carroll and Merrimack counties increase their combined share of state total population from 14.7% to 15.4% during the period. Coos County's share of state population declines from 2.7% in 2000 to 2.3% in 2010 and holds that share for the remainder of the projection period.

The following tables show the age detail of the projected county numbers as depicted in Table 6. The totals in the age tables differ slightly from those shown in Table 6.

This report and accompanying tables are available on the Internet at:
<http://www.nh.gov/oep/programs/DataCenter/library.htm> - click on "Projections." At this same site, the projection tables are available in a Microsoft Excel (.XLS) file. This file provides age/gender detail and tables with no gender detail.

New Hampshire Office of Energy & Planning
Population Projections

Belknap Co	Census	Published - November 2006				
	2000	2010	2015	2020	2025	2030
00-04	3,003	3,140	3,195	3,140	3,064	3,089
05-09	3,770	3,528	3,631	3,723	3,725	3,670
10-14	4,079	3,666	3,562	3,698	3,871	3,916
15-19	3,721	3,494	3,199	3,143	3,340	3,540
20-24	2,539	2,952	2,745	2,547	2,579	2,772
25-29	2,819	3,503	3,333	3,116	2,936	3,005
30-34	3,558	3,185	3,747	3,594	3,422	3,259
35-39	4,558	3,097	3,124	3,718	3,641	3,506
40-44	4,888	3,476	2,929	2,982	3,631	3,598
45-49	4,685	4,702	3,591	3,047	3,165	3,903
50-54	4,299	6,001	5,222	4,015	3,469	3,641
55-59	3,362	6,612	6,825	5,979	4,682	4,084
60-64	2,548	6,296	7,374	7,673	6,850	5,418
65-69	2,303	4,368	6,610	7,813	8,307	7,483
70-74	2,202	2,429	3,803	5,813	7,030	7,555
75-79	1,835	1,756	2,011	3,182	4,984	6,112
80-84	1,183	1,430	1,292	1,497	2,430	3,868
85+	973	1,259	1,277	1,221	1,381	2,063
Total	56,325	64,894	67,470	69,901	72,507	74,482
5-14	7,849	7,194	7,193	7,421	7,596	7,586
15-24	6,260	6,446	5,944	5,690	5,919	6,312
25-64	30,717	36,872	36,145	34,124	31,796	30,414
65+	8,496	11,242	14,993	19,526	24,132	27,081

These projections are also available with gender detail

New Hampshire Office of Energy & Planning
Population Projections

	Published - November 2006					
	Census 2000	2010	2015	2020	2025	2030
Carroll Co.	-----	-----	-----	-----	-----	-----
00-04	2,096	2,016	2,077	2,128	2,104	2,067
05-09	2,711	2,305	2,323	2,431	2,518	2,521
10-14	3,220	2,548	2,475	2,536	2,685	2,820
15-19	2,721	2,665	2,382	2,357	2,449	2,632
20-24	1,454	1,924	1,760	1,614	1,628	1,727
25-29	1,927	2,276	2,463	2,282	2,114	2,157
30-34	2,540	2,073	2,581	2,835	2,656	2,493
35-39	3,326	2,087	2,018	2,557	2,850	2,708
40-44	3,781	2,264	1,946	1,915	2,461	2,785
45-49	3,608	3,293	2,448	2,139	2,120	2,761
50-54	3,420	4,866	3,863	2,913	2,572	2,580
55-59	2,748	5,708	5,897	4,745	3,611	3,223
60-64	2,325	5,719	6,678	7,003	5,689	4,380
65-69	2,256	4,189	6,361	7,533	7,982	6,568
70-74	2,080	2,585	3,881	6,019	7,253	7,809
75-79	1,629	1,799	2,258	3,435	5,426	6,688
80-84	979	1,209	1,229	1,581	2,443	3,944
85+	845	866	972	1,063	1,322	1,948
Total	43,666	50,392	53,612	57,086	59,883	61,811
5-14	5,931	4,853	4,798	4,967	5,203	5,341
15-24	4,175	4,589	4,142	3,971	4,077	4,359
25-64	23,675	28,286	27,894	26,389	24,073	23,087
65+	7,789	10,648	14,701	19,631	24,426	26,957

These projections are also available with gender detail

New Hampshire Office of Energy & Planning
Population Projections

	Published - November 2006					
	Census 2000	2010	2015	2020	2025	2030
Cheshire	-----	-----	-----	-----	-----	-----
00-04	3,822	3,708	3,933	3,993	3,824	3,610
05-09	4,769	3,774	4,043	4,318	4,417	4,284
10-14	5,436	4,196	3,840	4,143	4,460	4,624
15-19	6,304	6,003	5,450	5,153	5,472	5,833
20-24	5,540	6,763	6,172	5,607	5,316	5,713
25-29	3,730	5,407	5,756	5,152	4,579	4,315
30-34	4,482	4,676	5,759	6,175	5,564	5,008
35-39	5,698	3,929	4,685	5,815	6,286	5,742
40-44	6,023	4,080	3,609	4,338	5,430	5,956
45-49	5,879	5,459	4,283	3,816	4,621	5,859
50-54	5,133	6,495	5,663	4,472	4,014	4,926
55-59	3,874	6,238	6,711	5,896	4,693	4,267
60-64	3,049	5,735	6,595	7,146	6,333	5,103
65-69	2,730	4,292	5,737	6,649	7,265	6,521
70-74	2,576	2,859	4,000	5,396	6,309	6,996
75-79	2,036	2,040	2,325	3,284	4,478	5,322
80-84	1,466	1,533	1,507	1,731	2,475	3,445
85+	1,278	1,466	1,532	1,554	1,726	2,326
Total	73,825	78,653	81,600	84,638	87,262	89,850
5-14	10,205	7,970	7,883	8,461	8,877	8,908
15-24	11,844	12,766	11,622	10,760	10,788	11,546
25-64	37,868	42,019	43,061	42,810	41,520	41,176
65+	10,086	12,190	15,101	18,614	22,253	24,610

These projections are also available with gender detail

Coos	New Hampshire Office of Energy & Planning Population Projections Published - November 2006					
	Census 2000	2010	2015	2020	2025	2030
	-----	-----	-----	-----	-----	-----
00-04	1,676	1,565	1,467	1,345	1,255	1,237
05-09	2,072	1,807	1,771	1,670	1,595	1,502
10-14	2,344	1,887	1,834	1,807	1,783	1,721
15-19	2,195	1,810	1,663	1,627	1,689	1,687
20-24	1,366	1,326	1,199	1,109	1,161	1,225
25-29	1,624	1,585	1,463	1,328	1,276	1,350
30-34	1,984	1,599	1,712	1,588	1,506	1,465
35-39	2,449	1,681	1,563	1,683	1,638	1,568
40-44	2,786	1,823	1,615	1,510	1,705	1,676
45-49	2,684	2,629	2,067	1,839	1,791	2,044
50-54	2,316	3,445	2,910	2,301	2,135	2,099
55-59	1,899	2,956	3,491	2,963	2,453	2,300
60-64	1,603	2,337	2,998	3,561	3,168	2,649
65-69	1,571	1,983	2,449	3,164	3,931	3,529
70-74	1,556	1,491	1,799	2,232	3,037	3,814
75-79	1,289	1,201	1,283	1,558	2,033	2,802
80-84	894	1,019	937	1,008	1,296	1,706
85+	803	991	1,063	1,048	1,187	1,470
Total	33,111	33,135	33,284	33,341	34,639	35,844
5-14	4,416	3,694	3,605	3,477	3,378	3,223
15-24	3,561	3,136	2,862	2,736	2,850	2,912
25-64	17,345	18,055	17,819	16,773	15,672	15,151
65+	6,113	6,685	7,531	9,010	11,484	13,321

These projections are also available with gender detail

New Hampshire Office of Energy & Planning
Population Projections

	Census 2000	Published - November 2006				
	2010	2015	2020	2025	2030	
Grafton	-----	-----	-----	-----	-----	-----
00-04	4,215	3,957	4,143	4,147	3,983	3,825
05-09	4,839	4,092	4,225	4,418	4,485	4,378
10-14	5,533	4,518	4,158	4,287	4,547	4,697
15-19	7,181	6,672	6,371	6,040	6,219	6,540
20-24	7,175	7,881	7,297	6,968	6,670	6,935
25-29	4,670	5,561	5,669	5,050	4,769	4,523
30-34	5,022	5,177	5,930	6,038	5,438	5,211
35-39	5,781	4,529	4,782	5,471	5,662	5,195
40-44	6,593	4,245	4,200	4,431	5,151	5,432
45-49	6,434	5,563	4,459	4,405	4,715	5,574
50-54	5,677	7,511	6,084	4,871	4,878	5,305
55-59	4,300	7,969	8,202	6,634	5,384	5,481
60-64	3,350	7,128	8,555	8,789	7,211	5,954
65-69	2,961	4,967	7,286	8,738	9,111	7,596
70-74	2,740	3,224	4,622	6,772	8,258	8,778
75-79	2,313	2,419	2,862	4,093	6,101	7,596
80-84	1,576	1,802	1,805	2,132	3,106	4,741
85+	1,383	1,657	1,780	1,820	2,091	2,898
Total	81,743	88,872	92,430	95,104	97,779	100,659
5-14	10,372	8,610	8,383	8,705	9,032	9,075
15-24	14,356	14,553	13,668	13,008	12,889	13,475
25-64	41,827	47,683	47,881	45,689	43,208	42,675
65+	10,973	14,069	18,355	23,555	28,667	31,609

These projections are also available with gender detail

New Hampshire Office of Energy & Planning
Population Projections

	Census 2000	Published - November 2006				
	2010	2015	2020	2025	2030	
Hillsborough	-----	-----	-----	-----	-----	-----
00-04	25,739	23,821	24,797	26,325	27,266	27,384
05-09	29,120	27,981	27,314	28,294	30,087	31,363
10-14	29,465	32,248	30,328	29,455	30,562	32,714
15-19	25,118	29,972	30,338	28,441	27,714	28,933
20-24	20,064	25,257	26,902	27,059	25,449	25,006
25-29	24,588	25,843	28,779	30,636	30,876	29,101
30-34	29,856	24,014	27,426	30,384	32,405	32,890
35-39	35,746	26,998	24,651	27,993	31,064	33,365
40-44	34,514	30,257	26,419	23,983	27,289	30,512
45-49	29,140	33,497	28,688	24,897	22,645	25,974
50-54	25,581	33,005	33,453	28,486	24,767	22,685
55-59	18,117	29,025	32,615	32,872	28,040	24,554
60-64	13,267	25,764	29,314	32,755	33,077	28,421
65-69	11,021	17,826	24,907	28,192	31,573	32,128
70-74	10,037	11,093	15,327	21,284	24,152	27,275
75-79	8,450	7,862	9,080	12,458	17,350	19,873
80-84	5,961	6,484	6,100	6,979	9,599	13,504
85+	5,057	6,274	6,369	6,083	6,512	8,363
Total	380,841	417,221	432,807	446,576	460,427	474,045
5-14	58,585	60,229	57,642	57,749	60,649	64,077
15-24	45,182	55,229	57,240	55,500	53,163	53,939
25-64	210,809	228,403	231,345	232,006	230,163	227,502
65+	40,526	49,539	61,783	74,996	89,186	101,143

These projections are also available with gender detail

New Hampshire Office of Energy & Planning
Population Projections

	Published - November 2006					
	Census 2000	2010	2015	2020	2025	2030
Merrimack	-----	-----	-----	-----	-----	-----
00-04	8,112	7,990	8,492	8,764	8,682	8,485
05-09	9,621	8,890	9,133	9,740	10,126	10,069
10-14	10,374	10,068	9,342	9,631	10,347	10,798
15-19	9,670	10,418	10,059	9,435	9,776	10,477
20-24	7,220	9,379	9,129	8,858	8,426	8,744
25-29	7,450	9,556	10,209	9,925	9,638	9,121
30-34	9,452	8,309	10,290	11,039	10,810	10,542
35-39	12,035	8,055	8,073	10,024	10,846	10,667
40-44	12,736	9,115	7,698	7,744	9,713	10,556
45-49	11,243	12,434	9,430	7,971	8,082	10,210
50-54	9,557	14,477	13,132	9,993	8,511	8,663
55-59	6,847	13,314	15,683	14,269	10,918	9,320
60-64	4,985	10,684	13,323	15,751	14,444	11,093
65-69	4,455	7,267	10,984	13,766	16,431	15,126
70-74	4,092	4,878	6,724	10,200	12,895	15,481
75-79	3,461	3,854	4,370	6,049	9,257	11,754
80-84	2,391	2,705	2,714	3,088	4,321	6,645
85+	2,524	2,725	2,794	2,842	3,141	4,081
Total	136,225	154,118	161,578	169,089	176,364	181,832
5-14	19,995	18,958	18,475	19,371	20,473	20,867
15-24	16,890	19,797	19,188	18,293	18,202	19,221
25-64	74,305	85,944	87,838	86,716	82,962	80,172
65+	16,923	21,429	27,586	35,945	46,045	53,087

These projections are also available with gender detail

New Hampshire Office of Energy & Planning
Population Projections

	Census 2000	Published - November 2006				
	2010	2015	2020	2025	2030	
Rockingham	-----	-----	-----	-----	-----	-----
00-04	18,100	15,203	15,378	16,282	16,792	16,655
05-09	21,398	19,534	17,774	17,932	19,087	19,895
10-14	22,001	23,306	21,340	19,364	19,646	21,150
15-19	17,610	21,382	21,141	19,296	17,639	18,140
20-24	11,403	15,331	16,251	15,994	14,726	13,685
25-29	15,125	15,031	17,010	17,989	17,813	16,572
30-34	21,189	14,002	16,522	18,639	19,823	19,859
35-39	27,288	17,265	14,413	16,958	19,249	20,719
40-44	27,385	21,946	17,187	14,309	16,940	19,468
45-49	23,179	26,775	21,421	16,716	13,999	16,791
50-54	20,166	28,269	28,052	22,379	17,551	14,860
55-59	14,192	25,431	29,354	29,033	23,293	18,493
60-64	10,236	22,748	27,398	31,529	31,382	25,478
65-69	8,400	17,017	24,554	29,515	34,161	34,414
70-74	7,149	10,379	15,358	22,091	26,749	31,386
75-79	5,649	6,313	8,546	12,601	18,284	22,507
80-84	3,723	4,436	4,667	6,284	9,346	13,813
85+	3,166	3,859	4,092	4,270	5,342	7,749
Total	277,359	308,227	320,458	331,181	341,822	351,634
5-14	43,399	42,840	39,114	37,296	38,733	41,045
15-24	29,013	36,713	37,392	35,290	32,365	31,825
25-64	158,760	171,467	171,357	167,552	160,050	152,240
65+	28,087	42,004	57,217	74,761	93,882	109,869

These projections are also available with gender detail

New Hampshire Office of Energy & Planning
Population Projections

	Published - November 2006					
	Census 2000	2010	2015	2020	2025	2030
Strafford	-----	-----	-----	-----	-----	-----
00-04	6,664	6,250	6,360	6,429	6,363	6,194
05-09	7,531	6,757	6,859	6,990	7,095	7,039
10-14	7,825	7,474	6,842	6,956	7,123	7,249
15-19	9,605	10,357	10,145	9,571	9,711	9,884
20-24	10,256	10,728	10,500	10,259	9,618	9,797
25-29	7,250	8,104	9,132	8,907	8,697	8,035
30-34	8,000	8,685	8,089	9,136	8,952	8,763
35-39	9,568	7,415	8,824	8,225	9,336	9,169
40-44	9,471	8,427	7,611	9,074	8,499	9,671
45-49	7,965	10,458	8,882	8,032	9,622	9,029
50-54	6,726	10,153	10,536	8,965	8,145	9,780
55-59	5,020	8,049	10,085	10,482	8,957	8,159
60-64	3,759	6,373	7,608	9,542	9,975	8,550
65-69	3,638	5,046	6,582	7,877	9,931	10,408
70-74	3,122	3,454	4,331	5,662	6,818	8,614
75-79	2,632	2,768	3,023	3,799	4,996	6,037
80-84	1,732	2,044	2,039	2,230	2,822	3,724
85+	1,469	1,931	2,070	2,137	2,297	2,732
Total	112,233	124,473	129,518	134,273	138,957	142,834
5-14	15,356	14,231	13,701	13,946	14,218	14,288
15-24	19,861	21,085	20,645	19,830	19,329	19,681
25-64	57,759	67,664	70,767	72,363	72,183	71,156
65+	12,593	15,243	18,045	21,705	26,864	31,515

These projections are also available with gender detail

New Hampshire Office of Energy & Planning
Population Projections

	Census 2000	2010	2015	2020	2025	2030
Sullivan	-----	-----	-----	-----	-----	-----
00-04	2,258	2,180	2,162	2,105	2,034	2,000
05-09	2,706	2,452	2,439	2,424	2,388	2,337
10-14	2,978	2,654	2,555	2,548	2,564	2,561
15-19	2,563	2,457	2,296	2,218	2,244	2,297
20-24	1,749	1,951	1,844	1,727	1,698	1,752
25-29	2,172	2,291	2,293	2,170	2,054	2,043
30-34	2,623	2,429	2,690	2,700	2,584	2,478
35-39	3,205	2,708	2,559	2,842	2,886	2,800
40-44	3,348	2,566	2,491	2,361	2,657	2,741
45-49	3,300	3,123	2,694	2,619	2,512	2,868
50-54	2,994	3,937	3,467	2,996	2,945	2,860
55-59	2,305	4,198	4,404	3,887	3,397	3,380
60-64	1,873	3,893	4,589	4,825	4,308	3,815
65-69	1,808	2,962	4,204	4,971	5,292	4,790
70-74	1,630	1,995	2,761	3,931	4,713	5,094
75-79	1,299	1,328	1,558	2,162	3,128	3,822
80-84	914	1,024	1,051	1,240	1,748	2,573
85+	733	1,045	1,066	1,097	1,267	1,723
Total	40,458	45,193	47,123	48,823	50,419	51,934
5-14	5,684	5,106	4,994	4,972	4,952	4,898
15-24	4,312	4,408	4,140	3,945	3,942	4,049
25-64	21,820	25,145	25,187	24,400	23,343	22,985
65+	6,384	8,354	10,640	13,401	16,148	18,002

These projections are also available with gender detail

New Hampshire Office of Energy & Planning
Population Projections

	Published - November 2006					
	Census 2000	2010	2015	2020	2025	2030
N.H.	-----	-----	-----	-----	-----	-----
00-04	75,685	69,830	72,004	74,658	75,367	74,546
05-09	88,537	81,120	79,512	81,940	85,523	87,058
10-14	93,255	92,565	86,276	84,425	87,588	92,250
15-19	86,688	95,230	93,044	87,281	86,253	89,963
20-24	68,766	83,492	83,799	81,742	77,271	77,356
25-29	71,355	79,157	86,107	86,555	84,752	80,222
30-34	88,706	74,149	84,746	92,128	93,160	91,968
35-39	109,654	77,764	74,692	85,286	93,458	95,439
40-44	111,525	88,199	75,705	72,647	83,476	92,395
45-49	98,117	107,933	87,963	75,481	73,272	85,013
50-54	85,869	118,159	112,382	91,391	78,987	77,399
55-59	62,664	109,500	123,267	116,760	95,428	83,261
60-64	46,995	96,677	114,432	128,574	122,437	100,861
65-69	41,143	69,917	99,674	118,218	133,984	128,563
70-74	37,184	44,387	62,606	89,400	107,214	122,802
75-79	30,593	31,340	37,316	52,621	76,037	92,513
80-84	20,819	23,686	23,341	27,770	39,586	57,963
85+	18,231	22,073	23,015	23,135	26,266	35,353
Total	1,235,786	1,365,178	1,419,880	1,470,012	1,520,059	1,564,925
5-14	181,792	173,685	165,788	166,365	173,111	179,308
15-24	155,454	178,722	176,843	169,023	163,524	167,319
25-64	674,885	751,538	759,294	748,822	724,970	706,558
65+	147,970	191,403	245,952	311,144	383,087	437,194

These projections are also available with gender detail
Shaded area, designates post war baby boom

%65	12.0	14.0	17.3	21.2	25.2	27.9
-----	------	------	------	------	------	------