

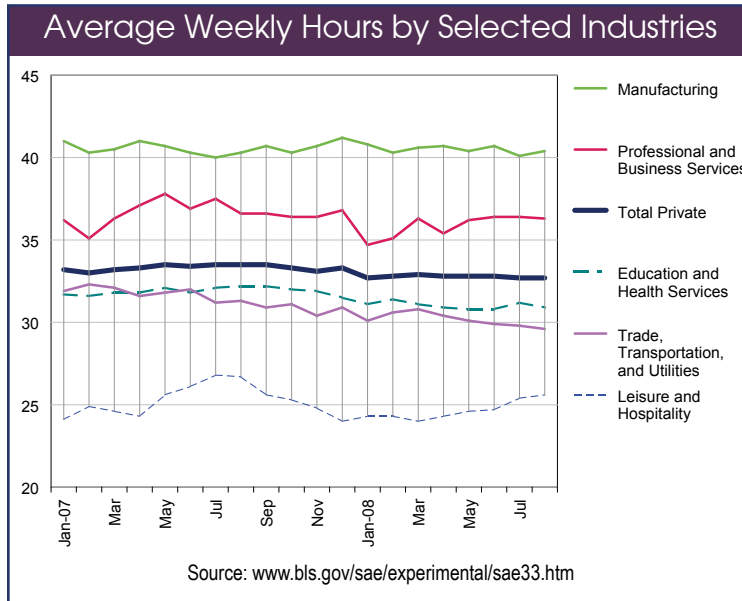


9. Production

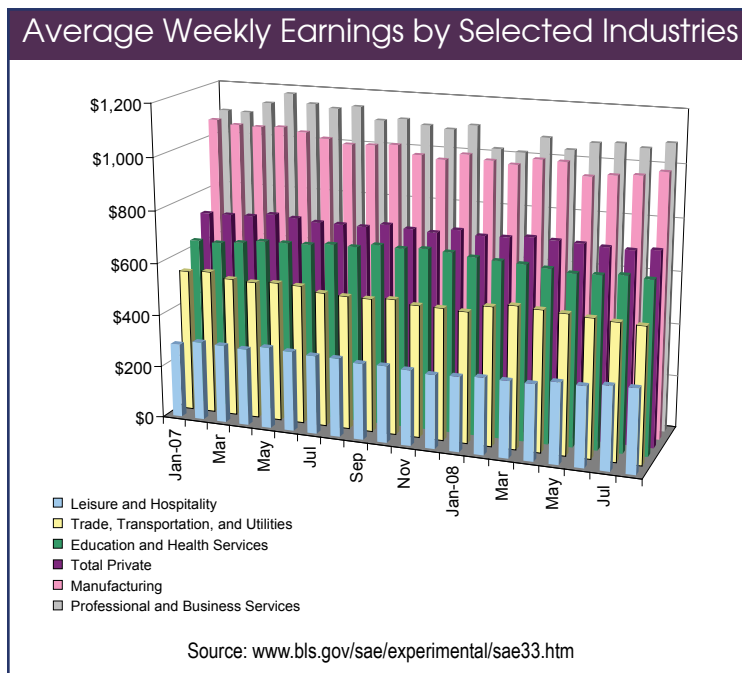
Goods-producing industries have long been the traditional backbone of production measurements in the nation. With the economic shift from goods-producing toward service-providing, conventional definitions of production are

being expanded to include service-providing industries.

Production workers in New Hampshire's *Manufacturing* industries were the only non-supervisory workers to average over 40 hours of work each week, according to results from a new experimental series produced by Current Employment Statistics.¹ Non-supervisory workers in *Professional and business services* had the next highest average number of hours with slightly more than 36 hours per week. *Professional and business services* include a large spectrum of businesses, from professional and technical occupations to landscaping and waste collection services. At the lower end of average hours worked were *Leisure and hospitality* workers and those in *Trade, transportation and utilities*.



Average weekly earnings for workers in *Leisure and hospitality* industries ranged around \$300 a week compared to \$500 in the sector with the next lowest earnings, *Trade, transportation and utilities*. Earnings for non-supervisory workers in *Professional and business services* surpassed those of production workers in *Manufacturing*. *Education and health services* workers were in the middle ranges for both average hours worked and earnings per week.



The calculation of gross domestic product by state uses compensation

¹ "Experimental All Employees Hours and Earnings Series by State from the Current Employment Statistics Program." *State and Metro Area Employment, Hours & Earnings*. U.S. Department of Labor, Bureau of Labor Statistics. Accessed October 24, 2008. <www.bls.gov/sae/saeaepp.htm>.

9. Production

of employees as one of the components in the total estimate. The compensation of employees is the sum of employee wages and salaries and supplements to salaries. Roughly 60 percent of New Hampshire's total gross domestic product by state is from compensation of employees. But that does vary from industry to industry. Four industries had similar shares, around 60 percent, of gross domestic product by state from employee compensation, other industry sectors varied.

The share of compensation of employees in *Utilities* was the smallest, less than 20 percent, meaning that the remainder of the value added in that industry was provided either from taxes on production and imports (less subsidies) or gross operating surplus.² The sectors with the highest share of industry GDP from compensation of employees were *Educational services* and *Management of companies and enterprises*, each with over 90 percent. The share of GDP from compensation of employees in *Health care and social assistance* and in *Manufacturing* was over 80 percent in each industry.

High Tech

Since 2001, over 40 percent of New Hampshire's *Manufacturing* employment could be defined as high tech manufacturing. Employment numbers slipped following the recession period in 2001, from over 42,000 to just above 36,600 the next year. Since

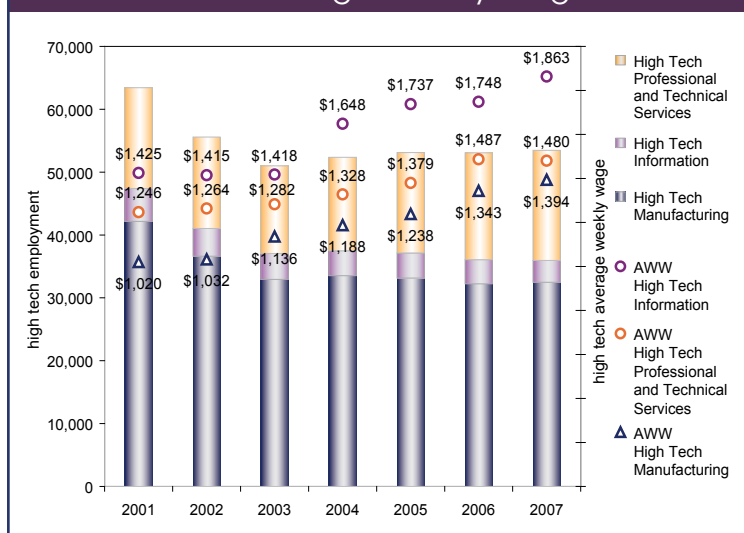
then employment levels in high tech manufacturing have stabilized, hovering around 32,800 workers since 2003. This is of interest because the average weekly wage for high tech workers is higher than average. High tech manufacturing workers received an average weekly wage of \$1,020 in 2001 and have seen that increase to \$1,394 by 2007. While average weekly wages in all *Manufacturing* industries are typically higher than the state average, *Manufacturing* workers in the state had a 3.9 percent increase in average weekly wage from \$1,066 in 2006 to \$1,109 in 2007.³

Additionally, there has been new growth in employment in the service-providing component of high tech industries. These industries employed over 21,200 workers in 2001. After dropping

³ "New Hampshire – Covered Employment & Wages." [Nhetwork](http://nhetwork.com). New Hampshire Employment Security, Economic and Labor Market Information Bureau. Accessed October 27, 2008. <nhetwork.nhes.state.nh.us/nhetwork/CEW.aspx?sid=6>

² "Gross domestic product by state (millions of dollars)." [Regional Economic Accounts](http://www.bea.gov/regional/index.htm). Bureau of Economic Analysis. Accessed October 27, 2008. <www.bea.gov/regional/index.htm>

New Hampshire High Tech Employment and Average Weekly Wage



9. Production

15 percent of employment at the low point in 2003, by 2007 it rebounded to within a percentage point to reach 20,999 workers. The average weekly wages of workers in service-providing high tech industries are considerably higher than their counterparts, surpassing even those in high tech manufacturing. In 2001, service-providing high tech workers had an average weekly wage of \$1,290, over \$250 more than peers in high

tech manufacturing. By 2007, that wage for service providing high tech workers had grown to \$1,544. This exceeded the average weekly wage of \$1,022 from all workers in those service-providing sectors. Service-providing high tech industries are from the *Information, Professional and technical services, Educational services* and *Other services* industry sectors.

Export Sales to the World	2004	2005	2006	2007	Source
Total (\$ millions)	\$2,286	\$2,548	\$2,811	\$2,910	WISER
Annual percent change	18.4%	11.5%	10.3%	3.5%	WISER/NHES
Industry Share of Total Exports					
Computer And Electronic Product Manufacturing	32.9%	32.3%	26.8%	27.3%	WISER/NHES
Machinery Manufacturing	19.7%	22.9%	23.6%	25.0%	WISER/NHES
Electrical Equipment, Appliances, & Components Mfg	5.4%	6.1%	5.9%	5.9%	WISER/NHES
Miscellaneous Manufactured Commodities	4.1%	4.4%	4.3%	5.3%	WISER/NHES
Fabricated Metal Product Manufacturing	5.4%	6.1%	5.9%	5.9%	WISER/NHES
Plastics And Rubber Product Manufacturing	4.1%	4.4%	4.3%	5.3%	WISER/NHES
Transportation Equipment Manufacturing	3.9%	3.5%	4.1%	4.5%	WISER/NHES
Printing, Publishing & Related Support Activities	5.4%	6.1%	5.9%	5.9%	WISER/NHES
Chemicals Manufacturing	3.5%	3.4%	3.0%	3.1%	WISER/NHES
Nonmetallic Mineral Product Manufacturing	3.0%	2.1%	2.5%	2.6%	WISER/NHES

9. Production

Gross Domestic Product by State - New Hampshire

	2004	2005	2006	2007	Source
Current Dollars (\$ millions)	\$51,432	\$53,468	\$56,073	\$57,341	BEA
Annual percent change	6.7%	4.0%	4.9%	2.3%	NHES
Real chained 2000 dollars (\$ millions)	\$47,744	\$48,359	\$49,226	\$49,179	BEA
Annual percent change	4.0%	1.3%	1.8%	-0.1%	NHES

Gross Domestic Product by State - United States

	2004	2005	2006	2007	Source
Current Dollars (\$ billions)	\$11,607	\$12,347	\$13,120	\$13,743	BEA
Annual percent change	6.6%	6.4%	6.3%	4.7%	BEA/NHES
Real chained 2000 dollars (\$ billions)	\$10,580	\$10,900	\$11,240	\$11,468	BEA
Annual percent change	3.5%	3.0%	3.1%	2.0%	BEA/NHES

New Capital Expenditures

	2004	2005	2006	2007	Source
Total (\$ millions)	\$476	\$517	\$614	n/a	CB
As a Percent of Payroll					
United States	20.1%	22.1%	22.9%	n/a	CB/NHES
New Hampshire	14.3%	14.1%	16.0%	n/a	CB/NHES
Connecticut	12.8%	13.0%	13.4%	n/a	CB/NHES
Maine	23.3%	17.1%	20.6%	n/a	CB/NHES
Massachusetts	16.7%	14.9%	16.6%	n/a	CB/NHES
Rhode Island	13.2%	13.4%	19.7%	n/a	CB/NHES
Vermont	15.6%	15.5%	17.5%	n/a	CB/NHES

Defense Contracts (\$ millions)

	2004	2005	2006	2007	Source
Total	\$715.9	\$943.7	\$1,178.9	n/a	CB

9. Production

Value Added	2004	2005	2006	2007	Source
Value Added by Manufacture					
Total (\$ millions)	\$8,466	\$9,143	\$9,203	n/a	CB
Value Added per Payroll Dollar					
United States	\$3.56	\$3.81	\$3.89	n/a	CB/NHES
New Hampshire	\$2.54	\$2.49	\$2.39	n/a	CB/NHES
United States rank ^a	51	50	51	n/a	CB/NHES
Connecticut	\$2.98	\$3.13	\$3.42	n/a	CB/NHES
United States rank ^a	44	45	37	n/a	CB/NHES
Maine	\$3.13	\$3.28	\$3.36	n/a	CB/NHES
United States rank ^a	39	38	41	n/a	CB/NHES
Massachusetts	\$3.02	\$3.04	\$3.23	n/a	CB/NHES
United States rank ^a	43	46	46	n/a	CB/NHES
Rhode Island	\$2.83	\$2.74	\$3.24	n/a	CB/NHES
United States rank ^a	50	49	45	n/a	CB/NHES
Vermont	\$2.97	\$2.91	\$3.17	n/a	CB/NHES
United States rank ^a	45	48	47	n/a	CB/NHES
Industry Share of Total Value Added					
Computer and Electronic Product Manufacturing	23.9%	21.6%	21.2%	n/a	CB/NHES
Fabricated Metal Product Manufacturing	12.6%	12.1%	12.9%	n/a	CB/NHES
Machinery Manufacturing	11.1%	12.4%	11.9%	n/a	CB/NHES
Miscellaneous Manufacturing	9.9%	9.9%	10.7%	n/a	CB/NHES
Electrical Equipment, Appliance, and Component Manufacturing	6.5%	7.1%	6.7%	n/a	CB/NHES
Nonmetallic Mineral Product Manufacturing	3.9%	4.7%	5.1%	n/a	CB/NHES
Plastics and Rubber Products Manufacturing	5.0%	4.0%	4.3%	n/a	CB/NHES
Food Manufacturing	2.7%	3.6%	4.1%	n/a	CB/NHES
Printing and Related Support Activities	3.8%	3.8%	4.0%	n/a	CB/NHES
Wood Product Manufacturing	3.1%	3.3%	3.1%	n/a	CB/NHES
Transportation Equipment Manufacturing	3.2%	3.2%	2.9%	n/a	CB/NHES
Chemical Manufacturing	2.8%	2.8%	2.7%	n/a	CB/NHES
Total Manufacturers' Shipments (\$ millions)					
	\$15,439	\$16,920	\$16,992	n/a	CB
Annual percent change					
	-4.7%	9.6%	0.4%	n/a	CB

^a Including D.C.