

New Hampshire

Economic Conditions



June 2008

Volume 108, Number 06

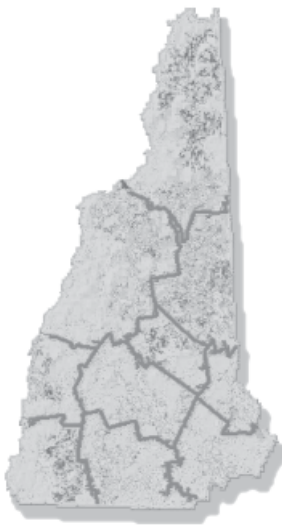
Visit our Web site at:
www.nh.gov/nhes/elmi/

Claims Activity3

Local Area
Unemployment
Statistics5

Current
Employment
Statistics6

For Additional
Information8



Published by New Hampshire
Employment Security's Economic
and Labor Market Information
Bureau

The Ins and Outs of Population Change

Most everyone is familiar with the decennial census, which is conducted every ten years. The head count of the country's population is required by the Constitution to determine the number of Representatives each state will have in Congress. But did you know that the U.S. Census Bureau estimates population for all the years in between as well?

The Census Bureau starts with the decennial census head count, then uses a variety of data — such as birth and death records, federal income tax returns, Medicare enrollment, and immigration records¹ — to estimate changes. Population is estimated as of July 1 each year. The most recent estimates include total changes in population from the April 2000 census through July 2007.

Every year, the Census Bureau estimates population for every county in each state. This county-level data is then adjusted so that the sum of county population adds up to the national total, which is estimated separately. For New Hampshire, *total population change*, the difference in population from April 2000 to July 2007, was estimated at 80,042.

Two contributing factors to population change are *natural increase* and *net migration*. *Natural increase* is simply the number of births minus the number of deaths during the specified time period. Positive natural increase means there were more births than deaths. Negative natural increase indicates more deaths than births. The natural increase of New Hampshire's population was 35,461 from April 2000 to July 2007. This included 107,694 births and 72,233 deaths.

The second measure, *net migration*, is the difference between people moving into a specific geographic area and people moving out of the same area during the specified time period. This measure is also broken into two parts. Migration that crosses national borders is defined as *international migration*. International migration data includes both native and foreign-born populations. It is determined by: the net international migration of the foreign born; the net migration between the United States and Puerto Rico; the net migration of natives to and from the United States; and the net overseas movement of the Armed Forces population.² Net international migration for New Hampshire totaled 13,928 more in July 2007 than April 2000.

¹ "Terms & Definitions — Population Estimates: Concepts." U.S. Census Bureau, Population Division, Accessed May 22, 2008. <www.census.gov/popest/topics/terms/>

² "Table 4: Cumulative Estimates of the Components of Population Change for Counties of New Hampshire: April 1, 2000 to July 1, 2007 (CO-EST2007-04-33)," released March 20, 2008. U.S. Census Bureau, Population Division, Accessed May 27, 2008. <www.census.gov/popest/counties/CO-EST2007-04.html>

The other part of migration is movement entirely within the United States, known as *internal* or *domestic migration*. Internal in- and out-migration consist of moves where both the origin and the destination are within the United States (excluding Puerto Rico).³ Net internal migration between April 2000 and July 2007 in New Hampshire was 35,682. This number includes people who moved from one New Hampshire county to another New Hampshire county, and not just those who in-migrated from or out-migrated to another state. Internal migration data measures population moving in or out of a specific area, but does not make any assumptions as to where those people either came from or went to.

County population change

More than half of the total population change for New Hampshire over the April 2000 to July 2007 period can be attributed to population increase in two counties: Hillsborough and Rockingham.

Hillsborough, the state’s most populous county, added 21,459 people, the most new residents among the counties since the 2000 Census. Natural increase contributed most of that growth, adding a net total of 16,608 residents. Hillsborough County had the highest number of both births and deaths during this time. While experiencing the highest amount of international net migration among the counties, adding 8,717 residents, Hillsborough County also

About Census Population Estimates

According to the Constitution, the population must be enumerated every ten years for the purpose of apportioning members of the U.S. House of Representatives among the states.⁴ Under Title 13 of the U.S. Code, estimates are used as a basis for allocating federal funds to states, counties, and local units of government. Estimates are also used in the calculation of per capita data in economic statistics.

Decennial census data are based on an actual head count of persons living in the United States. Annually, between census years, the U.S. Census Bureau estimates residential population, and also revises data for all years back to the last decennial census. The latest estimates, released in March 2008, were for the period ending July 1, 2007.

⁴ “Congressional Apportionment—Historical Perspective.” [Population and Housing Programs Branch](http://www.census.gov/population/www/censusdata/apportionment/history.html), U.S. Census Bureau, Population Division, Accessed May 22, 2008 <www.census.gov/population/www/censusdata/apportionment/history.html>

had the only decline in net internal migration, with 2,238 residents leaving the county.

Cumulative Estimates of the Components of Population Change for Counties of New Hampshire: April 1, 2000 to July 1, 2007

Geographic Area	Total Population Change*	Natural Increase	Vital Events		Net Migration		
			Births	Deaths	Total	International	Internal
New Hampshire	80,042	35,461	107,694	72,233	49,610	13,928	35,682
Belknap County	4,723	58	4,318	4,260	4,841	303	4,538
Carroll County	3,714	-362	3,003	3,365	4,249	181	4,068
Cheshire County	3,900	824	5,588	4,764	3,337	251	3,086
Coos County	-339	-850	2,176	3,026	633	74	559
Grafton County	3,771	849	5,877	5,028	3,274	734	2,540
Hillsborough County	21,459	16,608	36,737	20,129	6,479	8,717	-2,238
Merrimack County	12,049	2,605	11,224	8,619	9,921	1,047	8,874
Rockingham County	19,186	11,176	25,022	13,846	9,204	1,646	7,558
Strafford County	9,348	3,995	10,269	6,274	5,837	830	5,007
Sullivan County	2,231	558	3,480	2,922	1,835	145	1,690

*Total population change includes residual - see State and County Terms & Definitions at <http://www.census.gov/popest/topics/terms/states.html>. As a result, total population change does not equal the sum of natural increase and net migration.

Table 4: Cumulative Estimates of the Components of Population Change for Counties of New Hampshire: April 1, 2000 to July 1, 2007 (CO-EST2007-04-33)

Source: Population Division, U.S. Census Bureau <<http://www.census.gov/popest/estimates.php>>

Release Date: March 20, 2008

³ “Terms & Definitions—State & County.” U.S. Census Bureau, Population Division, Accessed May 22, 2008. <<http://www.census.gov/popest/topics/terms/states.html>>

Rockingham County had slightly lower growth than Hillsborough since the 2000 Census, adding 11,176 residents through natural increase and 9,204 residents through net migration. Rockingham County held the second-highest total in every population growth factor – births, deaths, net internal migration, and net international migration.

Merrimack County held the largest share of net migration among the counties, adding 9,921 new residents. This growth was fueled by the highest net internal migration, an increase of 8,874 residents. Net international migration contributed 1,047 residents. Natural increase contributed a smaller share of growth for Merrimack County, adding 2,605 residents. Strafford County ranked third in natural increase (3,995) and net internal migration (5,007).

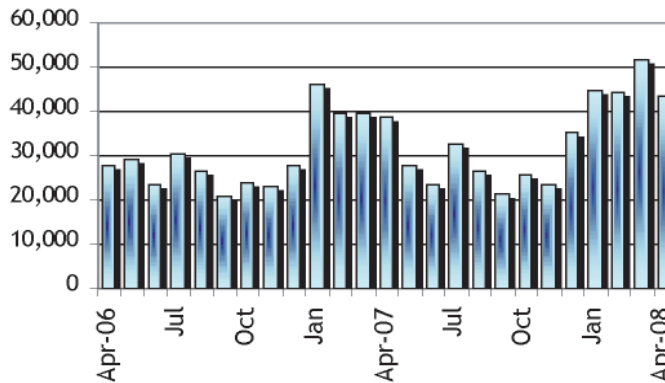
Between April 2000 and July 2007, Coös County was the only county to decrease in total population,

dropping by 339 residents. Though very small, both net internal migration and net international migration were positive, with a net migration of 633 residents. The biggest influence on population change was a higher number of deaths than births, resulting in natural increase of -850. Carroll County was the only other county with more deaths than births, with a natural increase of -362. In Carroll County, however, that decrease was offset by net migration of 4,249.

Four counties had relatively low natural increase, with the difference between births and deaths less than 1,000: Belknap (58), Cheshire (824), Grafton (849), and Sullivan (558). All of these counties had a substantially higher share of net migration from net internal migration than from net international migration. Sullivan County held the second-lowest net migration total, increasing by 1,835 residents; only Coös County had less net migration.

Unemployment Compensation Claims Activities

Total Regular Unemployment Compensation Programs:				Change from Previous			
				Month		Year	
	Apr-08	Mar-08	Apr-07	Net	Percent	Net	Percent
Initial Claims	5,659	4,459	4,740	1,200	26.9%	919	19.4%
Continued Weeks	43,364	51,903	38,868	-8,539	-16.5%	4,496	11.6%



Claims Activity

Continued Weeks Claimed

April 06 - April 08

Unemployment Compensation Fund

Unemployment compensation fund balance at the end of April	\$215,709,029.07
Average payment for a week of total unemployment:	\$270.32
Net benefits paid:	\$12,200,025.25
Net contributions received during the month:	\$13,630,177.90
Interest Received:	\$0.00
Reed Act Distribution:	\$0.00
Reed Act Withdrawn for Administrative Costs:	\$797,252.62

Trust Fund

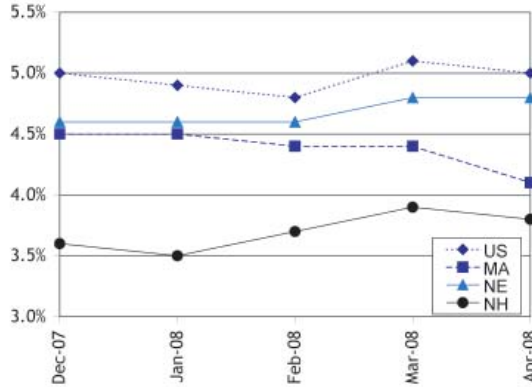
			Change from Previous	
Apr-08	Mar-08	Apr-07	Month	Year
214.8	213.5	206.7	0.6%	3.9%

United States
All Urban Areas (CPI-U)
(1982-1984=100)

Consumer Price Index

Seasonally Adjusted Estimates

N.H and U.S. Seasonally Adjusted Unemployment Rates



Unemployment Rates by Region

Seasonally Adjusted	Apr-08	Mar-08	Apr-07
United States	5.0%	5.1%	4.5%
Northeast	4.8%	4.8%	4.4%
New England	4.5%	4.8%	4.5%
Connecticut	4.7%	5.3%	4.4%
Maine	4.7%	5.0%	4.7%
Massachusetts	4.1%	4.4%	4.6%
New Hampshire	3.8%	3.9%	3.7%
Rhode Island	6.1%	6.1%	5.0%
Vermont	4.5%	4.6%	4.1%
Mid Atlantic	4.9%	4.8%	4.4%
New Jersey	5.0%	4.8%	4.3%
New York	4.7%	4.8%	4.4%
Pennsylvania	5.0%	4.9%	4.3%

Seasonally Adjusted Labor Force Estimates

Local Area Unemployment Statistics (LAUS)
By Place of Residence

	Dec-07	Jan-08	Feb-08	Mar-08	Apr-08
New Hampshire					
Unemployment Rate	3.4%	3.5%	3.7%	3.9%	3.8%
Civilian Labor Force	740,557	742,760	741,570	743,470	746,280
Number Employed	715,265	716,860	713,950	714,550	717,950
Number Unemployed	25,292	25,900	27,620	28,920	28,330
United States (in thousands)					
Unemployment Rate	5.0%	4.9%	4.8%	5.1%	5.0%
Civilian Labor Force	153,866	153,824	153,374	153,784	153,957
Number Employed	146,211	146,248	145,993	145,969	146,331
Number Unemployed	7,655	7,576	7,381	7,815	7,626

Seasonally Adjusted Nonfarm Employment Estimates

Current Employment Statistics (CES)
By Place of Establishment

Supersector	Dec-07	Jan-08	Feb-08	Mar-08	Apr-08
Total Nonfarm	654,700	654,300	653,100	655,200	656,400
Construction	28,500	27,700	27,800	27,600	27,500
Manufacturing	77,800	77,900	77,900	78,000	78,200
Durable Goods	59,600	60,100	59,900	60,000	60,100
Non-Durable Goods	18,200	17,800	18,000	18,000	18,100
Trade, Transportation, and Utilities	142,600	142,800	141,900	142,400	142,500
Wholesale Trade	28,400	28,500	28,400	28,700	28,700
Retail Trade	98,500	98,900	98,100	98,200	98,400
Transportation and Utilities	15,700	15,400	15,400	15,500	15,400
Information	12,200	12,300	12,200	12,400	12,200
Financial Activities	38,600	38,400	38,600	38,700	38,800
Real Estate and Rental and Leasing	7,800	7,900	7,900	7,800	7,800
Professional and Business Services	66,600	67,000	67,400	67,300	68,000
Administrative and Support	28,800	28,900	29,100	29,500	29,900
Education and Health Services	105,300	104,300	105,500	105,800	106,200
Educational Services	23,800	23,200	24,000	24,000	24,000
Health Care and Social Assistance	81,500	81,100	81,500	81,800	82,200
Leisure and Hospitality	64,500	64,000	63,900	63,900	64,100
Arts, Entertainment, and Recreation	10,400	10,200	10,500	10,400	10,800
Accommodation and Food Services	54,100	53,800	53,400	53,500	53,300
Other Services	22,300	22,300	22,300	22,200	22,100
Government	95,200	96,600	94,600	95,800	95,700
Federal Government	8,000	7,600	7,600	7,500	7,600
State Government	24,800	25,400	24,500	25,200	25,300
Local Government	62,400	63,600	62,500	63,100	62,800

Please note that not all supersectors meet the statistical criteria for publication in this category. We seasonally adjust the total nonfarm data series and all the published supersectors independently. Therefore, the sum of the published parts will not equal the total.

Not Seasonally Adjusted Estimates

Labor Force Estimates

New Hampshire	Apr-08	Mar-08	Apr-07
Total Civilian Labor Force	739,880	740,260	731,200
Employed	711,430	708,710	704,190
Unemployed	28,450	31,550	27,010
Unemployment Rate (percent of labor force)	3.8%	4.3%	3.7%

Unemployment Rates by Area

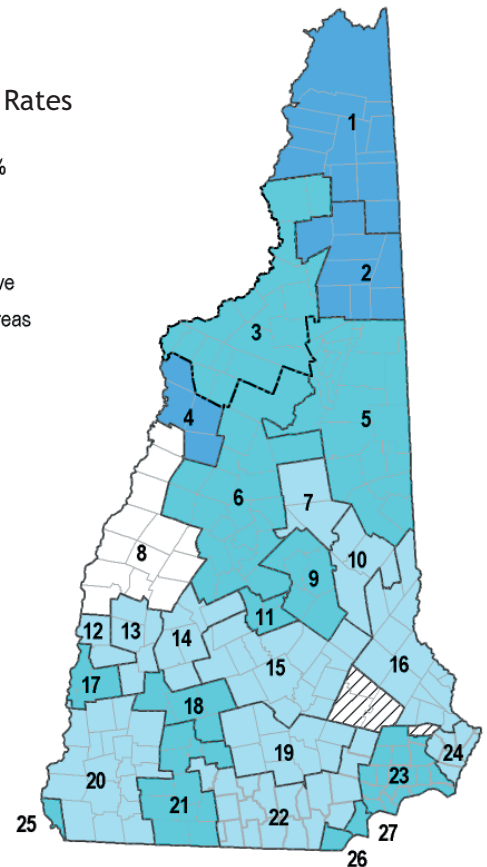
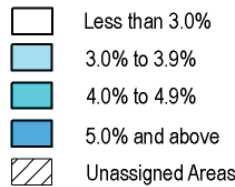
Not Seasonally Adjusted	Apr-08	Mar-08	Apr-07
U.S and Regional States			
United States	4.8%	5.2%	4.3%
Northeast	4.6%	5.2%	4.1%
New England	4.4%	5.2%	4.3%
Connecticut	4.5%	5.5%	4.2%
Maine	5.1%	5.8%	4.9%
Massachusetts	3.9%	4.8%	4.3%
New Hampshire	3.8%	4.3%	3.7%
Rhode Island	6.0%	6.7%	4.9%
Vermont	5.0%	5.3%	4.6%
Mid Atlantic	4.6%	5.1%	4.1%
New Jersey	4.8%	5.1%	4.0%
New York	4.6%	5.1%	4.2%
Pennsylvania	4.7%	5.3%	3.9%

Map	Apr-08	Mar-08	Apr-07
Key Labor Market Areas			
1 Colebrook NH-VT LMA, NH Portion	8.4%	6.0%	8.8%
2 Berlin NH MicroNECTA	5.7%	5.8%	6.1%
3 Littleton NH-VT LMA, NH Portion	4.8%	4.6%	4.1%
4 Haverhill NH LMA	5.5%	6.0%	4.8%
5 Conway NH-ME LMA, NH Portion	4.6%	4.7%	4.5%
6 Plymouth NH LMA	4.3%	4.3%	3.7%
7 Moultonborough NH LMA	3.8%	3.9%	3.4%
8 Lebanon NH-VT MicroNECTA, NH Portion	2.6%	2.7%	2.6%
9 Laconia NH MicroNECTA	4.8%	5.1%	4.0%
10 Wolfeboro NH LMA	3.9%	4.2%	3.6%
11 Franklin NH MicroNECTA	4.9%	5.6%	4.4%
12 Claremont NH MicroNECTA	3.7%	4.1%	3.9%
13 Newport NH LMA	3.9%	4.2%	3.6%
14 New London NH LMA	3.3%	3.4%	3.1%
15 Concord NH MicroNECTA	3.8%	4.3%	3.5%
16 Rochester-Dover NH-ME MetroNECTA, NH Portion	3.5%	3.9%	3.3%
17 Charlestown NH LMA	4.3%	4.6%	4.1%
18 Hillsborough NH LMA	4.3%	4.5%	4.2%
19 Manchester NH MetroNECTA	3.8%	4.3%	3.6%
20 Keene NH MicroNECTA	3.5%	3.9%	3.6%
21 Peterborough NH LMA	4.3%	4.9%	3.9%
22 Nashua NH-MA NECTA Division, NH Portion	3.7%	4.2%	3.6%
Exeter Area, NH Portion, Haverhill-			
N. Andover-Amesbury MA-NH	4.1%	4.9%	4.2%
NECTA Division			
24 Portsmouth NH-ME MetroNECTA, NH Portion	3.2%	3.7%	3.2%
25 Hinsdale Town, NH Portion, Brattleboro VT-NH LMA	4.1%	5.0%	4.2%
Pelham Town, NH Portion, Lowell-			
Billerica-Chelmsford MA-NH	4.2%	5.3%	4.6%
NECTA Division			
27 Salem Town, NH Portion, Lawrence-Methuen-Salem MA-NH NECTA Division	4.5%	4.9%	4.5%

Local Area Unemployment Statistics (LAUS)

Counties	Apr-08	Mar-08	Apr-07
Belknap	4.6%	5.0%	3.9%
Carroll	4.3%	4.5%	4.1%
Cheshire	3.7%	4.2%	3.7%
Coos	6.3%	5.8%	6.1%
Grafton	3.5%	3.5%	3.3%
Hillsborough	3.8%	4.3%	3.6%
Merrimack	3.8%	4.2%	3.6%
Rockingham	3.8%	4.4%	3.8%
Strafford	3.5%	3.8%	3.3%
Sullivan	3.6%	4.0%	3.6%

April - 08 Unemployment Rates



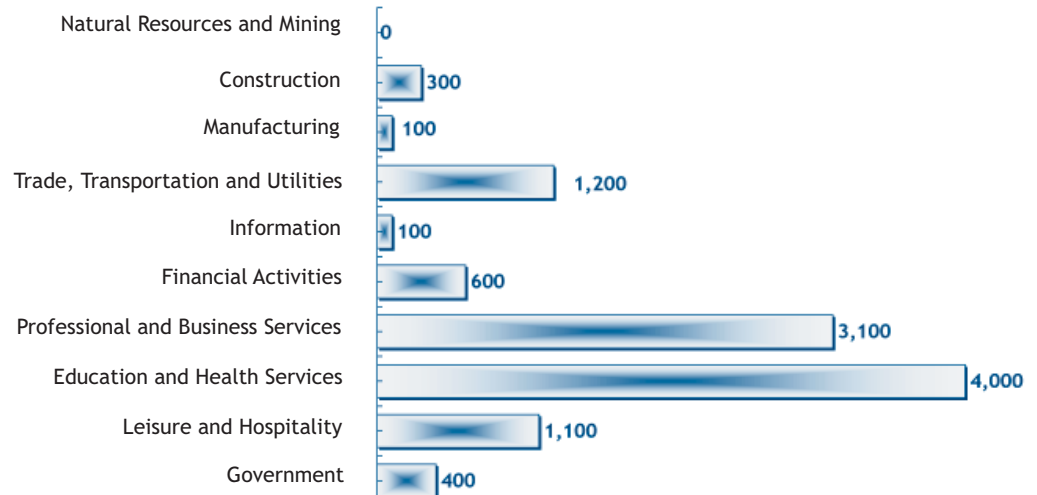
New Hampshire unemployment and labor force estimates are calculated using a regression model which depends on Current Population Survey (CPS) estimates. Labor Market Area estimates are calculated using the Bureau of Labor Statistics "Handbook Method" and then adjusted to the State levels.

Monthly Not Seasonally Adjusted New Hampshire Nonfarm Wage and Salary Employment

Current Employment Statistics Employment by Supersector by place of establishment	Number of Jobs			Change from previous:	
	Apr-08 preliminary	Mar-08 revised	Apr-07	Month	Year
	Total All Supersectors	651,800	645,300	638,700	6,500
Private Employment Total	553,100	546,500	542,200	6,600	10,900
Natural Resources and Mining	1,100	1,100	1,100	0	0
Construction	26,600	25,000	26,300	1,600	300
Manufacturing	77,700	77,400	77,600	300	100
Durable Goods	59,800	59,600	59,500	200	300
Non-Durable Goods	17,900	17,800	18,100	100	-200
Trade, Transportation and Utilities	140,300	139,000	139,100	1,300	1,200
Wholesale Trade	28,500	28,300	28,400	200	100
Retail Trade	96,400	95,400	95,300	1,000	1,100
Transportation and Utilities	15,400	15,300	15,400	100	0
Information	12,300	12,300	12,200	0	100
Financial Activities	38,700	38,500	38,100	200	600
Professional and Business	68,000	65,700	64,900	2,300	3,100
Education and Health	106,700	106,300	102,700	400	4,000
Leisure and Hospitality	59,800	59,300	58,700	500	1,100
Other Services	21,900	21,900	21,500	0	400
Government Total	98,700	98,800	96,500	-100	400

Change in Nonfarm Employment

April 07 - April 08



Monthly Analysis of Current Employment Statistics (CES) Data

For further analysis please read the *Detailed Monthly Analysis of Industry Employment Data* on our Web site at <www.nh.gov/nhes/elmi/nonfarm.htm>

Seasonally Adjusted: Preliminary seasonally adjusted estimates for April 2008 showed that New Hampshire employers added 1,200 jobs to payrolls in the state.

With a 700-job increase, professional and business services (supersector 60) proved to be the largest contributor to the state’s employment gain during the month. Education and health services (supersector 65) followed with 400 added jobs, and manufacturing (supersector 30) and leisure and hospitality (supersector 70) each expanded their ranks by 200 jobs. Concluding the list of additions,

trade, transportation, and utilities (supersector 40) and financial activities (supersector 55) each employed 100 additional persons.

On the other side of the ledger for April, information (supersector 50) trimmed 200 jobs from its rolls, and construction (supersector 20), other services (supersector 80), and government (supersector 90) each reduced their force by 100 jobs.

Unadjusted: April’s unadjusted employment estimates showed a seasonal upturn with a 6,500-job gain. Professional

Monthly Unadjusted Nonfarm Wage and Salary Employment by Metropolitan Statistical Areas

Employment by Sector number of jobs by place of establishment	Manchester NH MetroNECTA			Nashua NH-MA NECTA Division, NH Portion			Portsmouth NH-ME MetroNECTA, NH Portion			Rochester-Dover NH-ME MetroNECTA, NH Portion		
	preliminary Apr-08	Change from previous:		preliminary Apr-08	Change from previous:		preliminary Apr-08	Change from previous:		preliminary Apr-08	Change from previous:	
		Month	Year		Month	Year		Month	Year		Month	Year
Total All Sectors	101,600	600	1,400	133,400	1,500	1,000	55,800	900	1,500	58,200	500	1,500
Private Employment Total	89,600	900	800	118,000	1,500	1,000	46,000	700	1,200	44,100	400	1,200
Natural Resources and Construction	4,800	300	-200	4,800	300	-200	1,600	100	100	1,900	100	0
Manufacturing	9,400	0	100	25,700	100	500	3,900	0	0	7,000	0	100
Trade, Transportation and Utilities	20,200	200	100	29,500	100	-500	11,100	100	200	10,900	100	0
Wholesale Trade	4,800	100	100	6,300	0	100	2,000	0	100	1,200	0	0
Retail Trade	12,400	-100	0	19,200	0	-500	7,900	100	100	8,700	100	0
Transportation, Warehousing and Utilities	Data not available			4,000	100	-100	1,200	0	0	1,000	0	0
Information	3,400	0	100	2,200	0	100	1,900	0	100	1,100	0	0
Financial Activities	8,500	0	0	8,900	100	400	4,900	0	200	3,000	0	0
Professional and Business	13,200	300	200	14,800	600	300	9,100	200	100	4,800	0	400
Education and Health	17,100	0	100	17,100	-100	300	5,700	0	100	8,200	0	400
Leisure and Hospitality	8,400	100	0	10,600	400	100	6,400	300	400	5,400	200	200
Other Services	4,600	0	400	4,400	0	0	1,400	0	0	1,800	0	100
Government Total	12,000	-300	600	15,400	0	0	9,800	200	300	14,100	100	300

Average Earnings and Hours of Production Workers in Manufacturing

Sector	Average Weekly Earnings			Average Weekly Hours			Average Hourly Earnings		
	Apr-08 preliminary	Mar-08 revised	Apr-07	Apr-08 preliminary	Mar-08 revised	Apr-07	Apr-08 preliminary	Mar-08 revised	Apr-07
New Hampshire									
All Manufacturing	\$680.12	\$683.20	\$683.60	39.2	39.4	40.0	\$17.35	\$17.34	\$17.09
Durable Goods	\$704.16	\$704.85	\$721.76	40.1	40.3	41.6	\$17.56	\$17.49	\$17.35
Nondurable Goods	\$605.90	\$611.52	\$560.28	36.5	36.4	34.8	\$16.60	\$16.80	\$16.10

and business services (supersector 60) supplied 2,300 jobs to that total. Next came construction (supersector 20) with a 1,600-job increase, and trade, transportation, and utilities (supersector 40) followed with a 1,300 job expansion. Elsewhere, leisure and hospitality (supersector 70) put 500 more workers on the books. Education and health services (supersector 65) bumped up its job total by 400 in April. To wrap up activity for April in the plus column, manufacturing (supersector 30) enlarged its force by 300 jobs, and financial activities (supersector 55) augmented its staff with 200 extra positions.

Natural resources and mining (supersector 10), information (supersector 80), and other services (supersector 80) showed no changes in employment totals from the previous month's levels.

Government (supersector 90) reduced its total number of jobs by 100 to finish the list of the month's employment shifts.

B. G. McKay

New on the Web

Recent New Hampshire Economic Trends: Venture Capital Makes a Comeback in 2007

Slideshow

Updated information on venture capital investments is now available in a brief slideshow on the ELMI web site. Venture capital is equity funding provided to fast-growing entrepreneurial companies by professional investors. This slideshow highlights recent trends in venture capital investment for New Hampshire and the New England region.

To view the slideshow, go to <www.nh.gov/nhes/elmi> and click on "Venture Capital Slideshow" under the "What's New" section.

Business Employment Dynamics

PDF

The latest release of quarterly Business Employment Dynamics data is now available. The Business Employment Dynamics contain information on quarterly gross job gains and gross job losses. Gross job gains and gross job losses reveal aspects of business dynamics that underlie the net employment changes that are reported in monthly nonfarm estimates and in quarterly covered employment and wages (QCEW) data. This latest analysis is for the quarter ending September 2007.

To view the report, go to <www.nh.gov/nhes/elmi> and click on "Business Employment Dynamics" under the "What's New" section.



NH Employment Security
Economic and Labor Market
Information Bureau:

General Information
(603) 228-4124
<www.nh.gov/nhes/elmi/>

Research Unit
228-4173
Economist
229-4489
Covered Employment & Wages
228-4177
Current Employment Statistics
228-4127
Local Area Unemployment
Statistics
228-4175
Occupational Employment
Statistics
229-4315

NH EMPLOYMENT SECURITY
32 SOUTH MAIN STREET
CONCORD NH 03301-4857
OFFICIAL BUSINESS
ADDRESS SERVICE REQUESTED

New Hampshire Economic Conditions is published monthly in coordination with the Bureau of Labor Statistics and the Employment and Training Administration of the U.S. Department of Labor.

To Order Publications: Visit our Web site at <www.nh.gov/nhes/elmi/>; call (603) 228-4124; or send a written request to the following address:

ELMI Publications, NH Employment Security
32 South Main Street
Concord, NH 03301-4857

NH Employment Security is a proud member of America's Workforce Network and NH WORKS. NHES is an Equal Opportunity Employer and complies with the Americans with Disabilities Act. Auxiliary aids and services are available upon request to individuals with disabilities. TDD ACCESS: RELAY NH 1-800-735-2964.