

employment increases were substantially lower than those seen through the 1990s. Most recessions have one industry or event that is the media star as having “caused” the recession. For example, the “dot com” bust was credited with causing the 2001 recession. This current recession is more widespread in scope, its effects being felt by every industry.

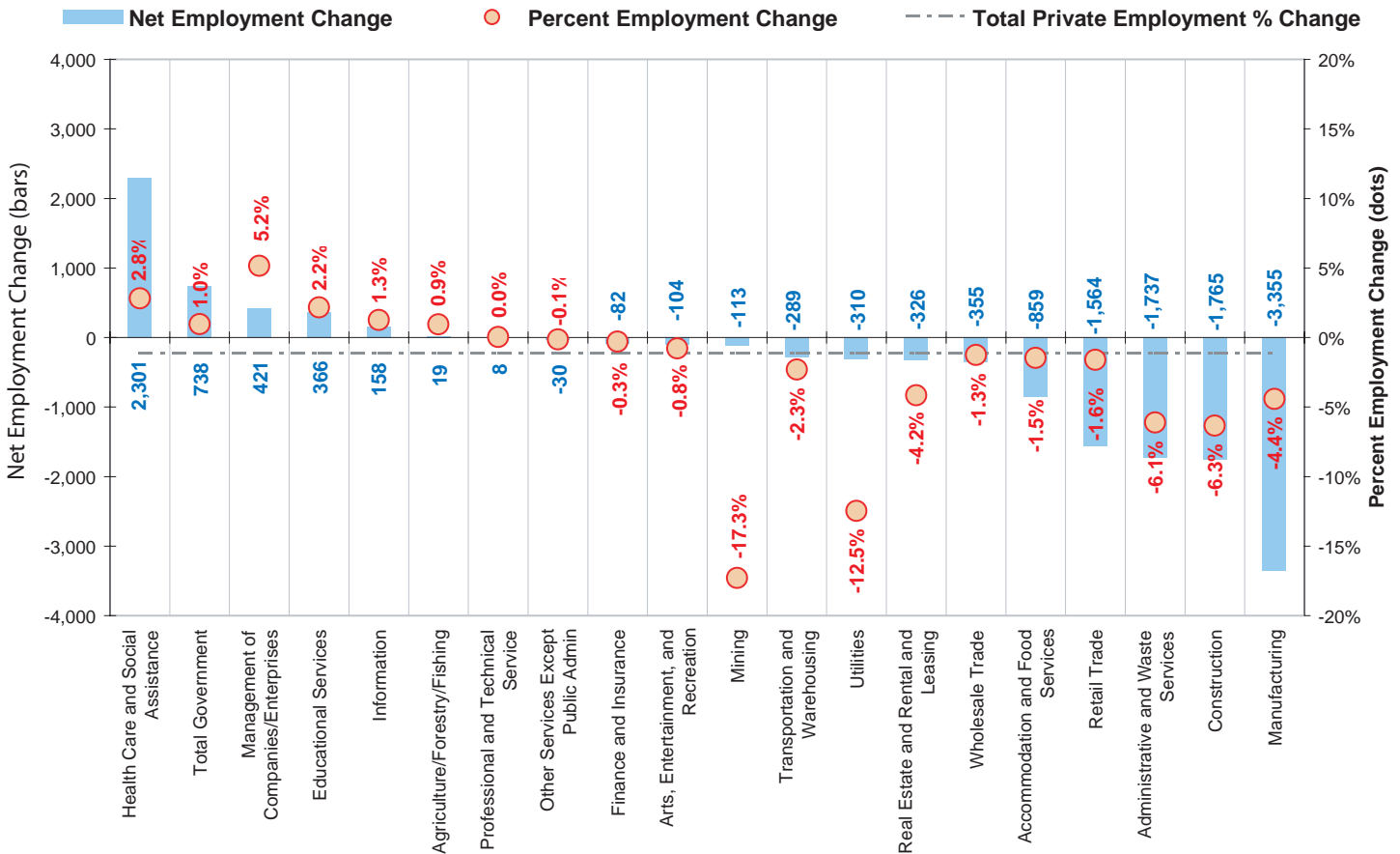
Bright spots were few and far between for New Hampshire’s companies. *Health care and social assistance* increased 2,301 over-the-year quarter-to-quarter comparison. This industry also had the second highest over-the-year quarter-to-quarter change of 2.8 percent. The largest change of 5.2 percent was in *Management of companies and enterprises*, with a net increase of 421 employees. *Educational services* grew by 366 more employees since fourth quarter 2007, a 2.2 percent increase.

In this over-the-year, quarter-to-quarter comparison *Manufacturing* had the largest numeric decrease, losing 3,355 workers. That was a drop of 4.4 percent compared to fourth quarter 2007. *Construction* dropped 1,765, or a 6.3 percent decline. *Administrative and waste services* shrank 6.1 percent or 1,737 jobs and *Retail trade* fell 1,564 jobs, 1.6 percent, behind fourth quarter 2007.

The largest percentage declines were found in *Mining*, with 17.3 percent drop, which represented 113 workers. In New Hampshire, *Mining* is largely related to sand and gravel quarrying which has likely been affected by the decline in construction activities. *Utilities* was next highest with 12.5 percent drop, which affected 310 employees.

Anita Josten

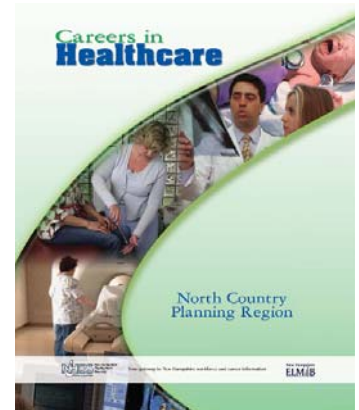
In the wake of the current recession period, six industry sectors and Government had positive employment changes over-the-year from fourth quarter 2007 to fourth quarter 2008.



New on the Web

Careers in Healthcare, North Country Planning Region

This report highlights *healthcare occupations* specifically in New Hampshire's North Country. It discusses characteristics of the type of work that can be expected in the field. It touches on the possible effects that technological developments will have in the healthcare field, and includes future prospects for healthcare jobs in the North Country. Employment for *healthcare occupations* in New Hampshire was estimated for 2006 and projected out to 2016.

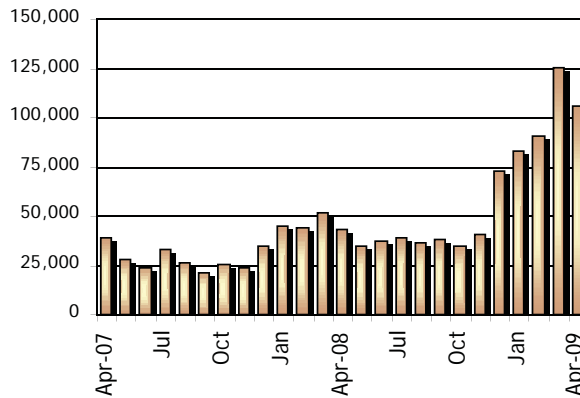


Careers in Healthcare, North Country Planning Region is available on our web page, as are all other publications and additional information produced by the Bureau.

The web address is: < www.nh.gov/nhes/elmi/ >

Unemployment Compensation Claims Activity

| Total Regular Unemployment Compensation Programs: | | | | Change from Previous | | | |
|---|---------|---------|--------|----------------------|---------|--------|---------|
| | | | | Month | | Year | |
| | Apr-09 | Mar-09 | Apr-08 | Net | Percent | Net | Percent |
| Initial Claims | 9,128 | 10,673 | 5,659 | -1,545 | -14.5% | 3,469 | 61.3% |
| Continued Weeks | 105,592 | 125,063 | 43,364 | -19,471 | -15.6% | 62,228 | 143.5% |



Claims Activity

Continued Weeks Claimed

April 07 to April 09

Trust Fund

Unemployment Compensation Fund

| | |
|--|------------------|
| Unemployment compensation fund balance at the end of April | \$115,823,699.80 |
| Average payment for a week of total unemployment: | \$277.79 |
| Net benefits paid: | \$27,544,831.13 |
| Net contributions received during the month: | \$22,448,261.14 |
| Interest Received: | \$0.00 |
| Reed Act Withdrawn for Administrative Costs: | \$0.00 |

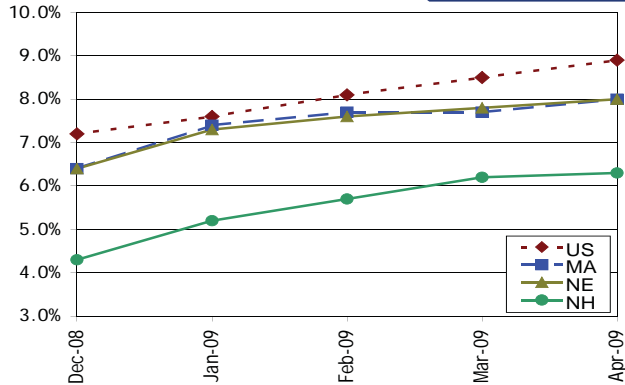
| | | | Change from Previous | |
|---------|---------|---------|----------------------|-------|
| Apr-09 | Mar-09 | Apr-08 | Month | Year |
| 213.240 | 212.709 | 214.823 | 0.2% | -0.7% |

United States
All Urban Areas (CPI-U)
(1982-1984=100)

Consumer Price Index

Seasonally Adjusted Estimates

Unemployment Rates by Region



| Seasonally Adjusted | Apr-09 | Mar-09 | Apr-08 |
|---------------------|--------|--------|--------|
| United States | 8.9% | 8.5% | 5.0% |
| Northeast | 7.9% | 7.9% | 5.0% |
| New England | 8.0% | 7.8% | 4.9% |
| Connecticut | 7.9% | 7.5% | 5.2% |
| Maine | 7.9% | 8.1% | 5.1% |
| Massachusetts | 8.0% | 7.7% | 4.8% |
| New Hampshire | 6.3% | 6.2% | 3.7% |
| Rhode Island | 11.1% | 10.6% | 7.1% |
| Vermont | 7.1% | 7.2% | 4.6% |
| Mid Atlantic | 7.9% | 7.9% | 5.0% |
| New Jersey | 8.4% | 8.3% | 5.0% |
| New York | 7.7% | 7.8% | 5.0% |
| Pennsylvania | 7.8% | 7.8% | 5.0% |

Dec-08 Jan-09 Feb-09 Mar-09 Apr-09

Local Area Unemployment Statistics (LAUS) By Place of Residence

| New Hampshire | | | | | |
|------------------------------|---------|---------|---------|---------|---------|
| Unemployment Rate | 4.3% | 5.2% | 5.7% | 6.2% | 6.3% |
| Civilian Labor Force | 738,870 | 739,720 | 742,420 | 743,790 | 743,630 |
| Number Employed | 707,430 | 701,450 | 700,170 | 697,670 | 697,020 |
| Number Unemployed | 31,440 | 38,270 | 42,250 | 46,120 | 46,610 |
| United States (in thousands) | | | | | |
| Unemployment Rate | 7.2% | 7.6% | 8.1% | 8.5% | 8.9% |
| Civilian Labor Force | 154,447 | 153,716 | 154,214 | 154,048 | 154,731 |
| Number Employed | 143,338 | 142,099 | 141,748 | 140,887 | 141,007 |
| Number Unemployed | 11,108 | 11,616 | 12,467 | 13,161 | 13,724 |

Current Employment Statistics (CES) By Place of Establishment

Supersector Dec-08 Jan-09 Feb-09 Mar-09 Apr-09

| | | | | | |
|--------------------------------------|---------|---------|---------|---------|---------|
| Total Nonfarm | 638,800 | 641,800 | 640,600 | 636,500 | 631,500 |
| Construction | 23,100 | 23,200 | 22,900 | 23,300 | 22,100 |
| Manufacturing | 72,300 | 71,700 | 71,000 | 69,900 | 69,100 |
| Durable Goods | 55,400 | 55,400 | 54,400 | 53,600 | 53,000 |
| Non-Durable Goods | 16,900 | 16,300 | 16,600 | 16,300 | 16,100 |
| Trade, Transportation, and Utilities | 139,000 | 142,500 | 142,900 | 141,800 | 139,100 |
| Wholesale Trade | 27,600 | 27,900 | 27,800 | 27,200 | 26,600 |
| Retail Trade | 96,400 | 100,100 | 100,700 | 100,200 | 98,400 |
| Transportation and Utilities | 15,000 | 14,500 | 14,400 | 14,400 | 14,100 |
| Information | 11,900 | 12,100 | 12,200 | 12,100 | 12,100 |
| Financial Activities | 37,700 | 37,700 | 37,800 | 37,800 | 37,900 |
| Real Estate and Rental and Leasing | 7,400 | 7,400 | 7,400 | 7,300 | 7,300 |
| Professional and Business Services | 65,900 | 66,000 | 65,000 | 64,400 | 64,400 |
| Administrative and Support | 27,400 | 27,700 | 27,400 | 26,300 | 26,100 |
| Education and Health Services | 107,200 | 106,100 | 106,900 | 106,400 | 106,900 |
| Educational Services | 23,900 | 23,100 | 23,500 | 23,200 | 23,500 |
| Health Care and Social Assistance | 83,300 | 83,000 | 83,400 | 83,200 | 83,400 |
| Leisure and Hospitality | 62,500 | 63,400 | 63,600 | 63,000 | 63,000 |
| Arts, Entertainment, and Recreation | 9,400 | 9,500 | 9,600 | 9,600 | 9,800 |
| Accommodation and Food Services | 53,100 | 53,900 | 54,000 | 53,400 | 53,200 |
| Other Services | 21,800 | 21,900 | 22,800 | 22,300 | 21,600 |
| Government | 96,500 | 96,400 | 94,700 | 94,700 | 94,500 |
| Federal Government | 7,900 | 7,900 | 7,900 | 7,600 | 7,700 |
| State Government | 26,400 | 26,100 | 24,100 | 23,700 | 23,300 |
| Local Government | 62,200 | 62,400 | 62,700 | 63,400 | 63,500 |
| Manchester NH MetroNECTA | 100,900 | 100,900 | 100,700 | 100,300 | 100,100 |
| Nashua NH-MA NECTA Division | 131,600 | 131,900 | 131,100 | 130,100 | 129,200 |
| Portsmouth NH-ME MetroNECTA | 55,000 | 55,000 | 54,800 | 55,000 | 54,700 |
| Rochester-Dover NH-ME MetroNECTA | 57,500 | 58,700 | 57,400 | 57,100 | 57,100 |

Please note that not all supersectors meet the statistical criteria for publication in this category.

We seasonally adjust the total nonfarm data series and all the published supersectors independently.

Therefore, the sum of the published parts will not equal the total.

Current month is Preliminary
Past months are Revised

Not Seasonally Adjusted Estimates

Labor Force Estimates

| New Hampshire | Apr-09 | Mar-09 | Apr-08 |
|----------------------------|---------|---------|---------|
| Total Civilian Labor Force | 737,160 | 740,930 | 734,850 |
| Employed | 690,250 | 691,790 | 709,060 |
| Unemployed | 46,910 | 49,140 | 25,790 |
| Unemployment Rate | 6.4% | 6.6% | 3.5% |

| United States (# in thousands) | Apr-09 | Mar-09 | Apr-08 |
|--------------------------------|---------|---------|---------|
| Total Civilian Labor Force | 153,834 | 153,728 | 153,208 |
| Employed | 140,586 | 139,833 | 145,921 |
| Unemployed | 13,248 | 13,895 | 7,287 |
| Unemployment Rate | 8.6% | 9.0% | 4.8% |

Unemployment Rates by Area

| Counties | Apr-09 | Mar-09 | Apr-08 |
|--------------|--------|--------|--------|
| Belknap | 7.0% | 7.8% | 4.3% |
| Carroll | 6.8% | 6.7% | 3.8% |
| Cheshire | 5.8% | 6.2% | 3.3% |
| Coos | 9.5% | 9.5% | 5.7% |
| Grafton | 5.6% | 5.3% | 3.2% |
| Hillsborough | 6.5% | 6.7% | 3.5% |
| Merrimack | 5.7% | 6.1% | 3.5% |
| Rockingham | 6.5% | 6.9% | 3.5% |
| Strafford | 6.2% | 6.6% | 3.1% |
| Sullivan | 5.9% | 6.1% | 3.2% |

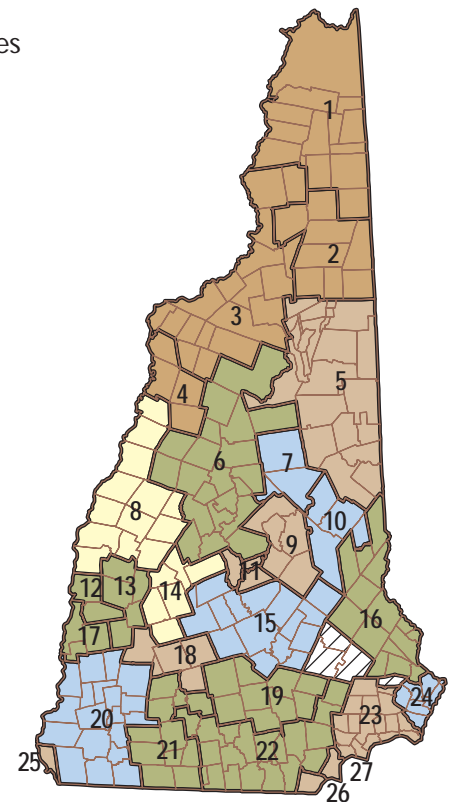
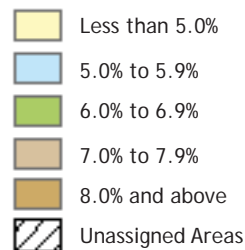
| Key Labor Market Areas | Apr-09 | Mar-09 | Apr-08 |
|--|--------|--------|--------|
| 1 Colebrook NH-VT LMA, NH Portion | 10.7% | 13.6% | 7.4% |
| 2 Berlin NH MicroNECTA | 8.4% | 7.9% | 5.2% |
| 3 Littleton NH-VT LMA, NH Portion | 8.6% | 7.6% | 4.6% |
| 4 Haverhill NH LMA | 8.4% | 8.5% | 4.7% |
| 5 Conway NH-ME LMA, NH Portion | 7.4% | 6.6% | 4.1% |
| 6 Plymouth NH LMA | 6.9% | 6.4% | 4.0% |
| 7 Moultonborough NH LMA | 5.2% | 6.0% | 3.5% |
| 8 Lebanon NH-VT MicroNECTA, NH Portion | 3.8% | 3.9% | 2.3% |
| 9 Laconia NH MicroNECTA | 7.1% | 7.9% | 4.5% |
| 10 Wolfeboro NH LMA | 5.6% | 6.6% | 3.4% |
| 11 Franklin NH MicroNECTA | 7.2% | 8.2% | 4.5% |
| 12 Claremont NH MicroNECTA | 6.0% | 6.6% | 3.4% |
| 13 Newport NH LMA | 6.7% | 6.5% | 3.5% |
| 14 New London NH LMA | 4.9% | 4.9% | 3.1% |
| 15 Concord NH MicroNECTA | 5.8% | 6.1% | 3.5% |
| 16 Rochester-Dover NH-ME MetroNECTA, NH Portion | 6.2% | 6.7% | 3.1% |
| 17 Charlestown NH LMA | 6.8% | 7.8% | 3.8% |
| 18 Hillsborough NH LMA | 7.5% | 7.0% | 3.8% |
| 19 Manchester NH MetroNECTA | 6.2% | 6.6% | 3.4% |
| 20 Keene NH MicroNECTA | 5.6% | 5.9% | 3.2% |
| 21 Peterborough NH LMA | 6.5% | 6.8% | 3.8% |
| 22 Nashua NH-MA NECTA Division, NH Portion | 6.4% | 6.6% | 3.4% |
| 23 Exeter Area, NH Portion, Haverhill-N. Andover-Amesbury MA-NH NECTA Division | 7.2% | 7.8% | 4.0% |
| 24 Portsmouth NH-ME MetroNECTA, NH Portion | 5.6% | 5.8% | 3.0% |
| 25 Hinsdale Town, NH Portion, Brattleboro VT-NH LMA | 7.1% | 7.7% | 3.7% |
| 26 Pelham Town, NH Portion, Lowell-Billerica-Chelmsford MA-NH NECTA Division | 7.5% | 8.0% | 3.9% |
| 27 Salem Town, NH Portion, Lawrence-Methuen-Salem MA-NH NECTA Division | 7.6% | 7.8% | 4.3% |

Unemployment Rates by States

| Not Seasonally Adjusted U.S and Regional States | Apr-09 | Mar-09 | Apr-08 |
|---|--------|--------|--------|
| United States | 8.6% | 9.0% | 4.8% |
| Northeast | 7.8% | 8.3% | 4.5% |
| New England | 7.9% | 8.2% | 4.5% |
| Connecticut | 7.8% | 7.8% | 4.6% |
| Maine | 8.3% | 9.0% | 5.0% |
| Massachusetts | 7.8% | 8.2% | 4.3% |
| New Hampshire | 6.4% | 6.6% | 3.5% |
| Rhode Island | 11.3% | 11.1% | 6.3% |
| Vermont | 7.7% | 7.9% | 4.8% |
| Mid Atlantic | 7.7% | 8.3% | 4.5% |
| New Jersey | 8.2% | 8.6% | 4.5% |
| New York | 7.5% | 8.1% | 4.5% |
| Pennsylvania | 7.6% | 8.3% | 4.5% |

Current month is Preliminary
Past months are Revised

April - 09 Unemployment Rates



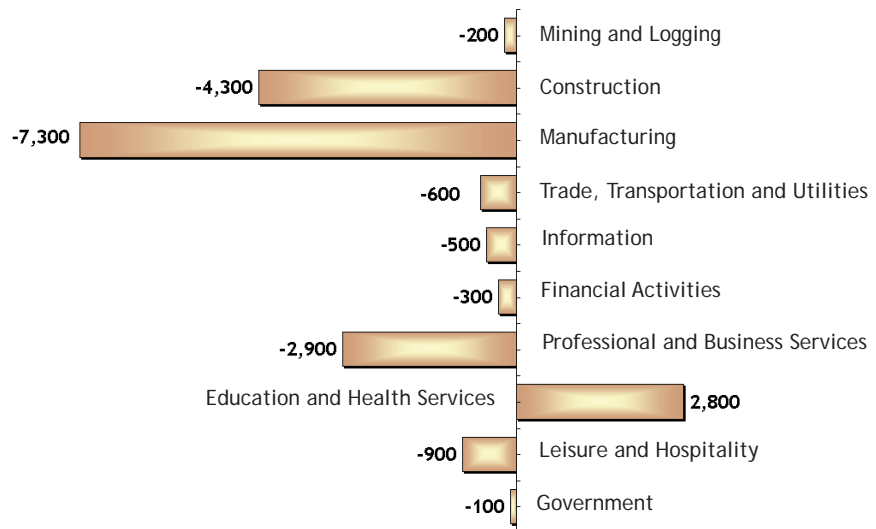
New Hampshire unemployment and labor force estimates are calculated using a regression model which depends on Current Population Survey (CPS) estimates. Labor Market Area estimates are calculated using the Bureau of Labor Statistics "Handbook Method" and then adjusted to the State levels.

Monthly Not Seasonally Adjusted New Hampshire Nonfarm Wage and Salary Employment

| Current Employment Statistics Employment by Supersector by place of establishment | Number of Jobs | | | Change from previous: | |
|---|------------------------|-------------------|---------|-----------------------|---------|
| | Apr-09 preliminary | Mar-09 revised | Apr-08 | Month | Year |
| | Total All Supersectors | 626,500 | 626,700 | 641,100 | -200 |
| Private Employment Total | 529,000 | 528,600 | 543,500 | 400 | -14,500 |
| Mining and Logging | 800 | 800 | 1,000 | 0 | -200 |
| Construction | 21,200 | 20,800 | 25,500 | 400 | -4,300 |
| Manufacturing | 68,800 | 69,300 | 76,100 | -500 | -7,300 |
| Durable Goods | 52,800 | 53,200 | 58,000 | -400 | -5,200 |
| Non-Durable Goods | 16,000 | 16,100 | 18,100 | -100 | -2,100 |
| Trade, Transportation and Utilities | 136,600 | 138,100 | 137,200 | -1,500 | -600 |
| Wholesale Trade | 26,400 | 26,800 | 28,100 | -400 | -1,700 |
| Retail Trade | 96,200 | 97,100 | 94,300 | -900 | 1,900 |
| Transportation and Utilities | 14,000 | 14,200 | 14,800 | -200 | -800 |
| Information | 12,100 | 12,000 | 12,600 | 100 | -500 |
| Financial Activities | 37,700 | 37,600 | 38,000 | 100 | -300 |
| Professional and Business | 64,500 | 62,800 | 67,400 | 1,700 | -2,900 |
| Education and Health | 107,500 | 107,000 | 104,700 | 500 | 2,800 |
| Leisure and Hospitality | 58,400 | 58,300 | 59,300 | 100 | -900 |
| Other Services | 21,400 | 21,900 | 21,700 | -500 | -300 |
| Government Total | 97,500 | 98,100 | 97,600 | -600 | -100 |

Change in Nonfarm Employment

April 08 - April 09



Monthly Analysis of Current Employment Statistics (CES) Data

For further analysis please read the *Detailed Monthly Analysis of Industry Employment Data* on our Web site at <www.nh.gov/nhes/elmi/nonfarm.htm>

Seasonally Adjusted: Preliminary seasonally adjusted employment decreased from March to April, down 5,000 jobs. Over-the-year, employment decreased by 14,300 jobs.

Over-the-month, trade, transportation, and utilities (supersector 40) lost 2,700 jobs. The bulk of this drop can be attributed to the loss in retail trade, down 1,800 jobs. During this same time period, construction (supersector 20) also experienced an employment decline, down 1,200 jobs.

Employment in manufacturing (supersector 30) and other services

(supersector 80) each decreased from March to April, down 800 and 700 jobs respectively. Over-the-month, government showed a loss of 200 jobs.

From March to April employment in information (supersector 50), professional and business services (supersector 60), and leisure and hospitality (supersector 70) each remained unchanged.

On a more positive note, education and health services (supersector 65) added 500 jobs over-the-month. Financial activities (supersector 55) posted a slight gain from March to April, up 100 jobs.

Monthly Unadjusted Nonfarm Wage and Salary Employment by Metropolitan Statistical Areas

| Employment by Sector number of jobs by place of establishment | Manchester NH MetroNECTA | | | Nashua NH-MA NECTA Division | | | Portsmouth NH-ME MetroNECTA | | | Rochester-Dover NH-ME MetroNECTA | | |
|---|-----------------------------|--------------------------|--------|--------------------------------|--------------------------|--------|--------------------------------|--------------------------|------|-------------------------------------|--------------------------|--------|
| | preliminary Apr-09 | Change from previous: | | preliminary Apr-09 | Change from previous: | | preliminary Apr-09 | Change from previous: | | preliminary Apr-09 | Change from previous: | |
| | | Month | Year | | Month | Year | | Month | Year | | Month | Year |
| Total All Sectors | 100,000 | 500 | -900 | 129,200 | 400 | -2,500 | 53,800 | 300 | -700 | 57,600 | 200 | -1,500 |
| Private Employment Total | 88,200 | 500 | -1,000 | 113,700 | 200 | -2,600 | 43,900 | 100 | -700 | 44,000 | 100 | -900 |
| Mining and Logging and Construction | 4,500 | 200 | -200 | 4,300 | 200 | -400 | 1,400 | 0 | -100 | 1,600 | 100 | -100 |
| Manufacturing | 8,500 | -100 | -500 | 23,000 | -100 | -1,600 | 3,800 | -100 | -200 | 6,600 | -100 | -300 |
| Trade, Transportation and Utilities | 19,100 | -100 | -700 | 29,700 | -300 | 100 | 10,600 | -100 | -200 | 10,700 | -300 | -200 |
| Wholesale Trade | 4,400 | 0 | -400 | 5,900 | 100 | -100 | 1,900 | -100 | -100 | 1,100 | -100 | -100 |
| Retail Trade | 11,800 | -200 | -200 | 20,000 | -400 | 200 | 7,800 | 0 | 100 | 8,700 | -100 | 0 |
| Transportation, Warehousing and Utilities | Data not available | | | 3,800 | 0 | 0 | 900 | 0 | -200 | 900 | -100 | -100 |
| Information | 3,000 | 0 | -100 | 2,400 | 0 | 0 | 1,800 | 0 | -100 | 1,100 | 0 | 0 |
| Financial Activities | 7,900 | -100 | -100 | 8,500 | 0 | -300 | 4,100 | 0 | 0 | 4,200 | 0 | -100 |
| Professional and Business | 14,200 | 200 | 0 | 14,000 | 300 | -200 | 9,100 | 200 | -200 | 4,600 | 100 | -400 |
| Education and Health | 18,300 | 100 | 600 | 17,100 | 0 | 200 | 5,600 | 0 | 100 | 8,100 | 100 | 100 |
| Leisure and Hospitality | 8,400 | 200 | -100 | 10,200 | 100 | -400 | 6,000 | 100 | 0 | 5,300 | 200 | 100 |
| Other Services | 4,300 | 100 | 100 | 4,500 | 0 | 0 | 1,500 | 0 | 0 | 1,800 | 0 | 0 |
| Government Total | 11,800 | 0 | 100 | 15,500 | 200 | 100 | 9,900 | 200 | 0 | 13,600 | 100 | -600 |

Average Earnings and Hours of Production Workers in Manufacturing

| Sector | Average Weekly Earnings | | | Average Weekly Hours | | | Average Hourly Earnings | | |
|-------------------|-------------------------|----------|----------|----------------------|---------|--------|-------------------------|---------|---------|
| | Apr-09 | Mar-09 | Apr-08 | Apr-09 | Mar-09 | Apr-08 | Apr-09 | Mar-09 | Apr-08 |
| | preliminary | revised | | preliminary | revised | | preliminary | revised | |
| New Hampshire | | | | | | | | | |
| All Manufacturing | \$652.81 | \$656.64 | \$688.14 | 37.8 | 38.4 | 39.3 | \$17.27 | \$17.10 | \$17.51 |
| Durable Goods | \$667.29 | \$668.88 | \$716.94 | 37.7 | 38.2 | 40.3 | \$17.70 | \$17.51 | \$17.79 |
| Nondurable Goods | \$603.58 | \$616.53 | \$605.54 | 37.7 | 38.8 | 36.5 | \$16.01 | \$15.89 | \$16.59 |

Seasonally Unadjusted: Preliminary not seasonally adjusted employment decreased slightly from March to April, down 200 jobs. Over-the-year, New Hampshire employers have lost 14,600 jobs.

From March to April employment in trade, transportation, and utilities (supersector 40) declined by 1,500 jobs. Employment in government (supersector 90) decreased over-the-month, down 600 jobs. Employers in manufacturing (supersector 30) and other services (supersector 80) each lost 500 jobs from March to April.

Employment in mining and logging (supersector 10) remained unchanged over-the-month.

Employers in professional and business services (supersector 60) added 1,700 jobs to its payroll from March to April. Just over three-fourths of this growth was in administrative and support and waste management and remediation services (sector 56), up 1,300 jobs.

Employment in education and health services (supersector 65) and construction (supersector 20) grew over-the-month, up 500 and 400 respectively. Information (supersector 50), financial activities (supersector 55), and leisure and hospitality (supersector 70) each added 100 jobs from March to April.

Gail Clay

2008 Gross Domestic Product (GDP) by State for New Hampshire

New Hampshire's real GDP grew 1.8 percent from 2007 to 2008. Gross Domestic Product¹ for New Hampshire in 2008 was \$60 billion in current dollars (\$50.6 billion in chained 2000 dollars, also referred to as real GDP). The state grew faster than the nation at 0.7 percent and New England at 1.0 percent. New Hampshire's growth rate of 1.8 percent in 2008 was faster than the growth in real GDP in 2007 at 0.8 percent. Growth in real U.S. GDP by state slowed from 2.0 percent in 2007 to 0.7 percent.

Over 90 percent of the state's GDP is from private industries. *Manufacturing* and *Real estate rental and leasing* each make up over 15 percent of New Hampshire's GDP from private industry. Other significant contributors adding at least 8 percent to private GDP include *Retail trade*, *Healthcare and social assistance*, *Financial activities*, and *Professional and technical services*.

Using chained dollars, a comparison of growth rates from 2007 and 2008 by industry helps identify

Real Gross Domestic Product by State (millions of chained dollars)

| Industry | 2006 | 2007 | 2008 | 2006-2007 | 2007-2008 | Share of Total |
|--|--------|--------|--------|-----------|-----------|----------------|
| All industry total | 49,266 | 49,642 | 50,553 | 0.8% | 1.8% | |
| Private industries | 45,249 | 45,553 | 46,427 | 0.7% | 1.9% | 91.8% |
| Agriculture, forestry, fishing, and hunting | 220 | 223 | 208 | 1.4% | -6.7% | 0.4% |
| Mining | 32 | 33 | 30 | 3.1% | -9.1% | 0.1% |
| Utilities | 1,517 | 1,520 | 1,466 | 0.2% | -3.6% | 2.9% |
| Construction | 1,786 | 1,460 | 1,331 | -18.3% | -8.8% | 2.6% |
| Manufacturing | 7,063 | 7,431 | 7,395 | 5.2% | -0.5% | 14.6% |
| Wholesale trade | 3,209 | 3,217 | 3,137 | 0.2% | -2.5% | 6.2% |
| Retail trade | 4,827 | 4,919 | 4,900 | 1.9% | -0.4% | 9.7% |
| Transportation and warehousing, excluding Postal Service | 830 | 820 | 796 | -1.2% | -2.9% | 1.6% |
| Information | 2,036 | 2,182 | 2,431 | 7.2% | 11.4% | 4.8% |
| Finance and insurance | 4,033 | 4,071 | 4,150 | 0.9% | 1.9% | 8.2% |
| Real estate and rental and leasing | 6,669 | 6,640 | 7,188 | -0.4% | 8.3% | 14.2% |
| Professional and technical services | 3,534 | 3,662 | 4,086 | 3.6% | 11.6% | 8.1% |
| Management of companies and enterprises | 765 | 634 | 496 | -17.1% | -21.8% | 1.0% |
| Administrative and waste services | 1,265 | 1,415 | 1,395 | 11.9% | -1.4% | 2.8% |
| Educational services | 717 | 747 | 757 | 4.2% | 1.3% | 1.5% |
| Health care and social assistance | 3,969 | 4,086 | 4,308 | 2.9% | 5.4% | 8.5% |
| Arts, entertainment, and recreation | 415 | 423 | 425 | 1.9% | 0.5% | 0.8% |
| Accommodation and food services | 1,395 | 1,391 | 1,387 | -0.3% | -0.3% | 2.7% |
| Other services, except government | 1,057 | 1,057 | 1,053 | 0.0% | -0.4% | 2.1% |
| Government | 4,041 | 4,107 | 4,151 | 1.6% | 1.1% | 8.2% |

industries driving the acceleration in growth. The largest share of the 2007 to 2008 over-the-year increase in real GDP was from *Information* and *Professional and technical services*, the only industries to show a double-digit growth rate.

In light of recent economic events, the financial crisis, *Management of companies and enterprises* was at the other end of the scale, dropping over 20 percent from 2007. *Construction* also lost ground, dropping almost nine percent from 2007, but it was less than the 18 percent drop from 2006 to 2007.

Anita Josten

¹Real GDP by state (millions of chained 2000 dollars). U.S. Department of Commerce, Bureau of Economic Analysis. < www.bea.gov/ > Advanced statistics were released on June 2, 2009 and are subject to change.

NH Employment Security Economic and Labor Market Information Bureau:

General Information
(603) 228-4124
<www.nh.gov/nhes/elmi/>

Research Unit
228-4173
Economist
229-4427
Covered Employment & Wages
228-4177
Current Employment Statistics
228-4127
Local Area Unemployment
Statistics
228-4175
Occupational Employment
Statistics
229-4315

New Hampshire Economic Conditions is published monthly in coordination with the Bureau of Labor Statistics and the Employment and Training Administration of the U.S. Department of Labor.

To Order Publications: Visit our Web site at <www.nh.gov/nhes/elmi/>; call (603) 228-4124; or send a written request to the following address:

ELMI Publications, NH Employment Security
32 South Main Street
Concord, NH 03301-4857

NH Employment Security is a proud member of America's Workforce Network and NH WORKS. NHE is an Equal Opportunity Employer and complies with the Americans with Disabilities Act. Auxiliary aids and services are available upon request to individuals with disabilities. TDD ACCESS: RELAY NH 1-800-735-2964.

