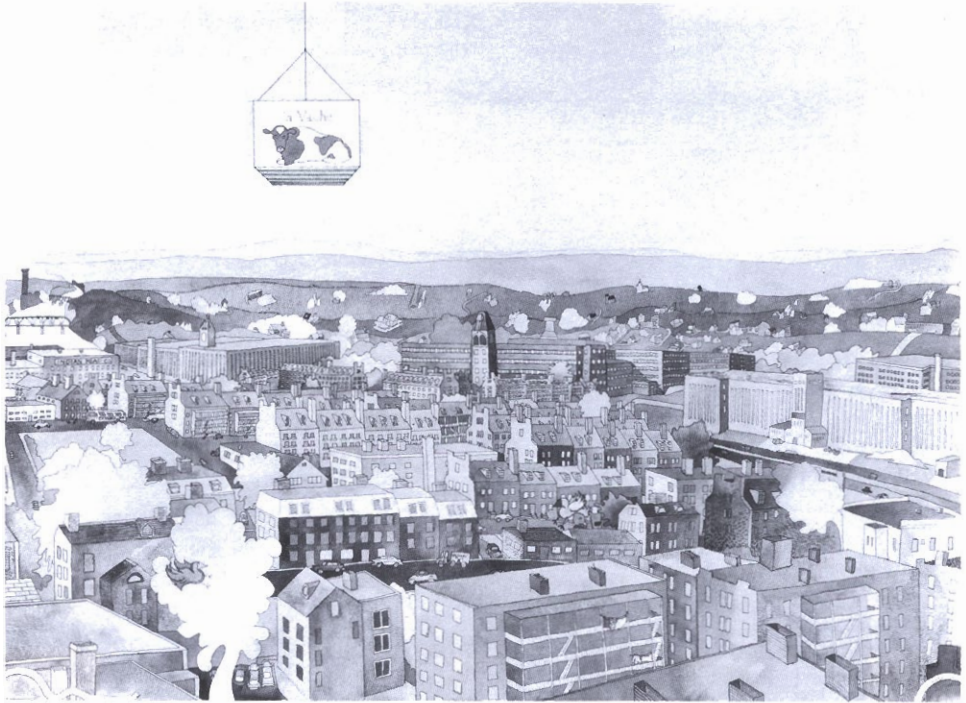


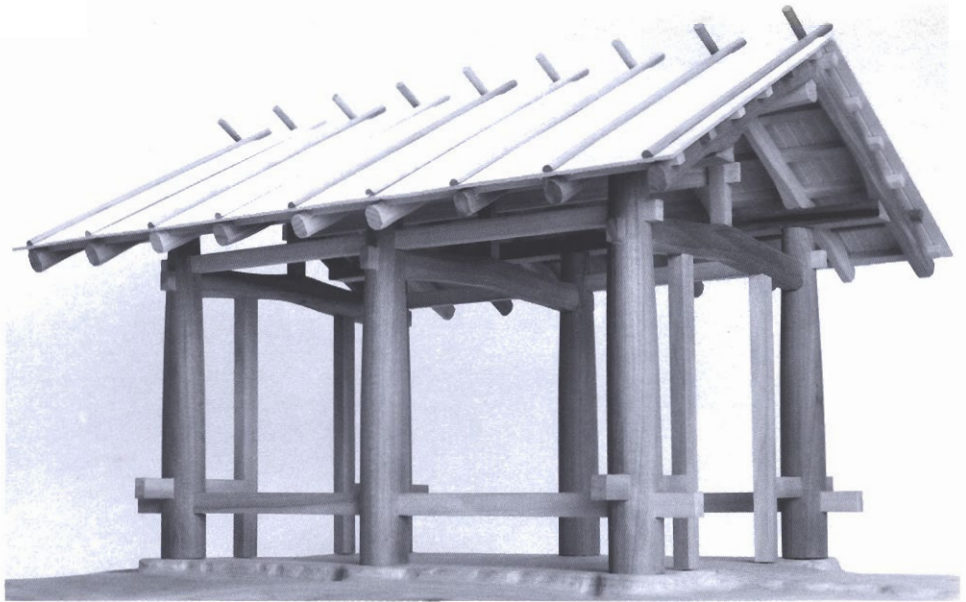
DICK BRODEUR



"MANCHESTER ET LA VACHE" 1979-80

WATERCOLOR
25" x 34"

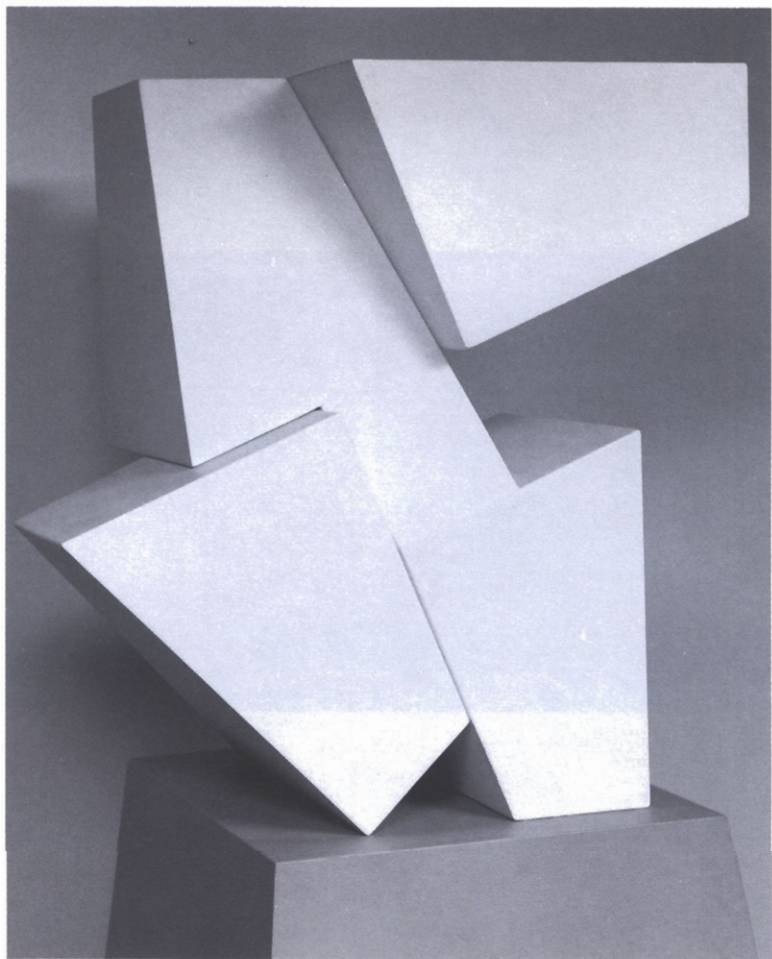
LEE A. SCHUETTE
AND ASSOCIATE RICK MCAULAY



MODEL FOR "TEAHOUSE PAVILLION" 1988

NATIVE PINE, WHITE OAK, COPPER
12' x 7' x 15'

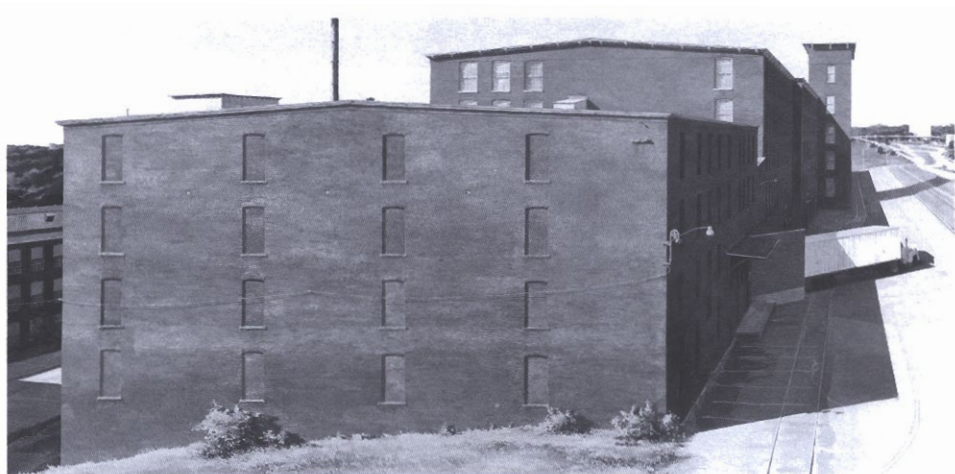
M I C H A E L P . M C C O N N E L L



" C O N C O R D # 4 4 " 1 9 8 3

CORETEN STEEL
40" x 42" x 24"

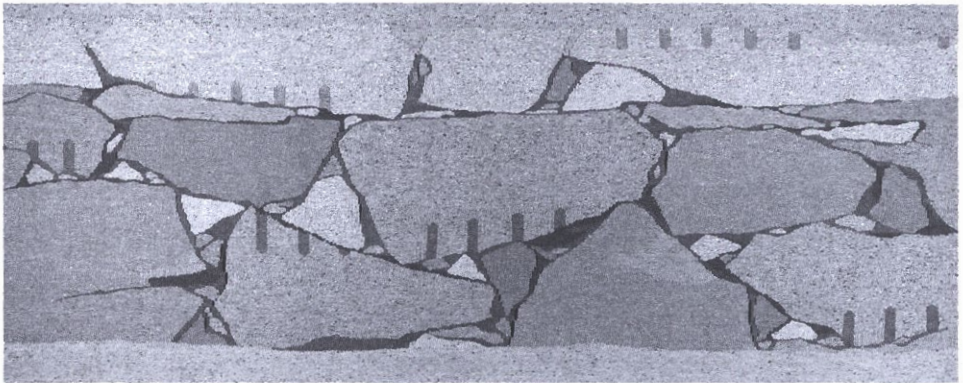
DAVID FULLAM



"MILLYARD" 1982

GOUACHE PAINTING
28 $\frac{1}{4}$ " \times 46 $\frac{1}{4}$ "

J U D I T H W I L B O U R N E L S O N



“ S T O N E W A L L T A P E S T R Y ” 1 9 8 4

HANDWOVEN, WOOL AND COTTON
42" x 9'

B O B L A P R E E



" I S L E S O F S H O A L S " 1 9 7 7

CIBACHROME PHOTOGRAPH
11" x 14"

E S T H E R A M E L I A T I T C O M B



" J O U R N E Y E A S T W A R D " 1 9 8 4

BLACK AND WHITE PHOTOGRAPH
11" x 14"

C O N L E Y H A R R I S



" S H I M M E R I N G M A R S H " 1 9 8 4

WATERCOLOR
25" x 82"