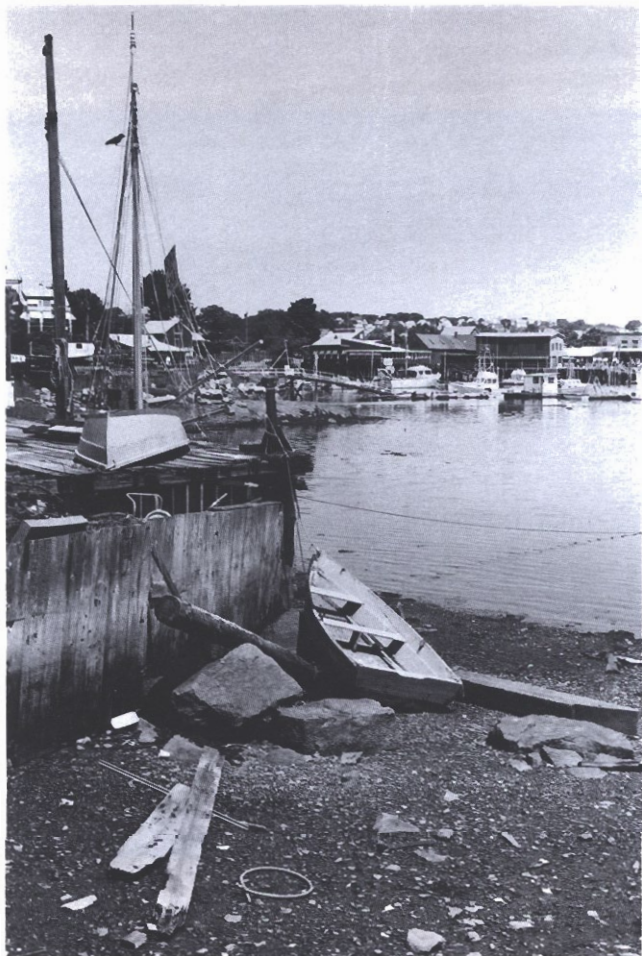


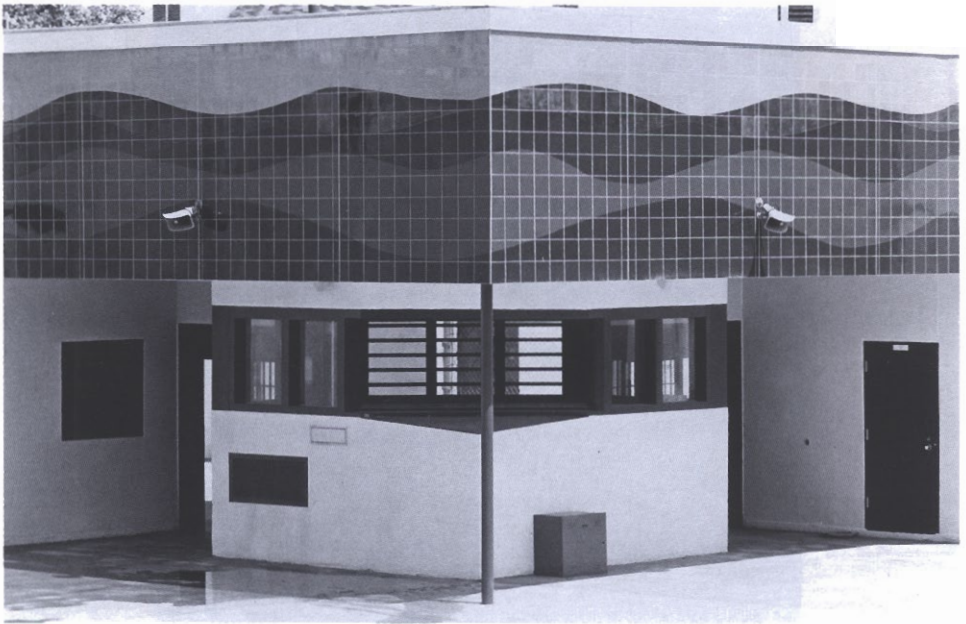
I R E N E E . D U P O N T



" T I D E ' S O U T " 1 9 8 4

HAND-COLORED PHOTOGRAPH, VANDYKE PROCESS  
7" x 10"

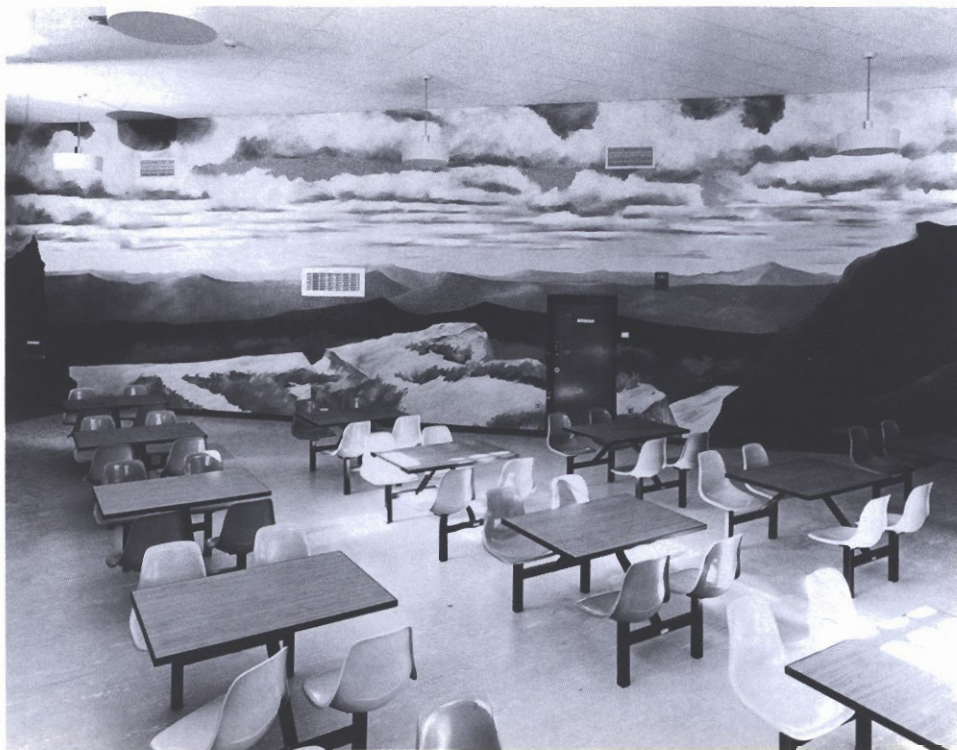
KATHY HANSON



"LANDSCAPE MURAL" 1985

HANDPAINTED QUARRY TILES  
9' x 65' x 1/2"

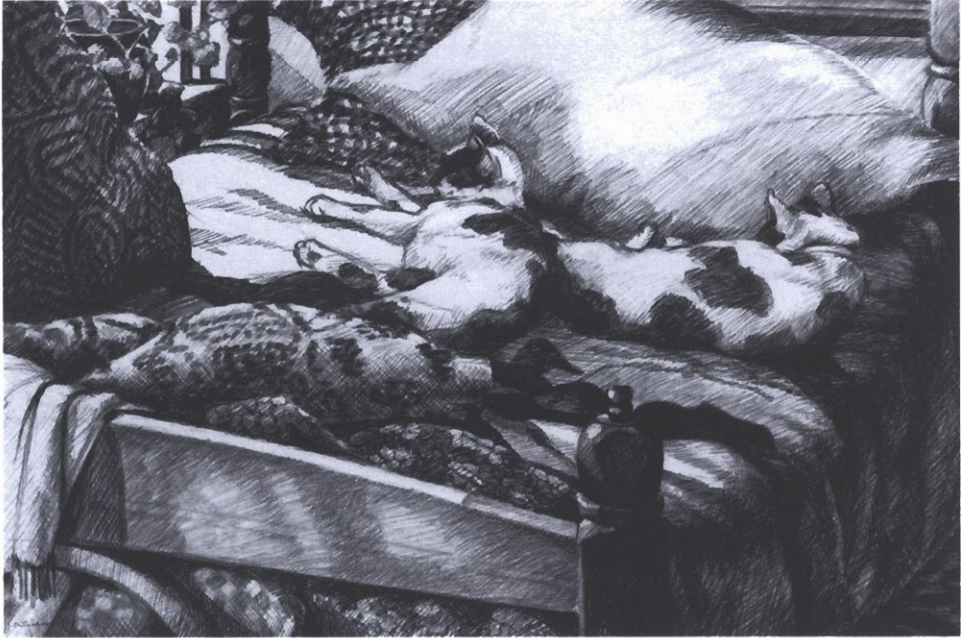
MARKET SQUARE MURALS  
GORDON B. CARLISLE  
STEVEN LEE  
M. PATRICIA SPLAINE  
D. CARY WENDELL



" M O U N T A I N S C A P E " 1 9 8 5

ACRYLIC ON CEMENT BLOCK  
16' x 48'

JANIS E. THEODORE



"DOUBLE PORTRAIT OF SASHA" 1980

CHARCOAL  
29" x 40"



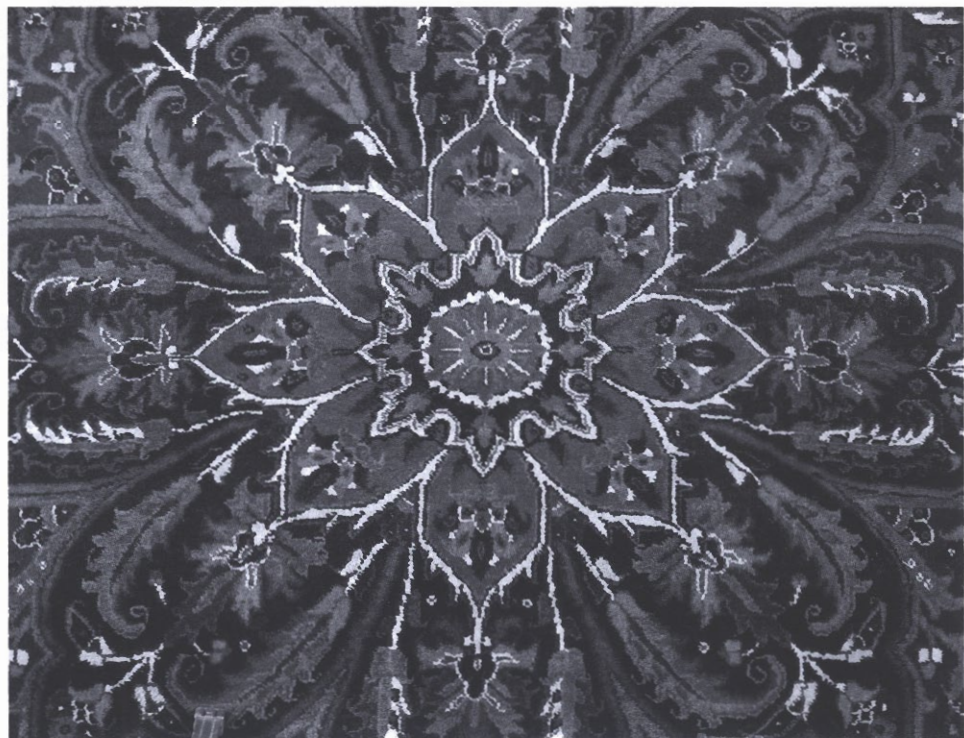
ANNE C. WEBER



" M O N T R E A L B U S S T O P " 1 9 8 0

WATERCOLOR  
29" x 36"

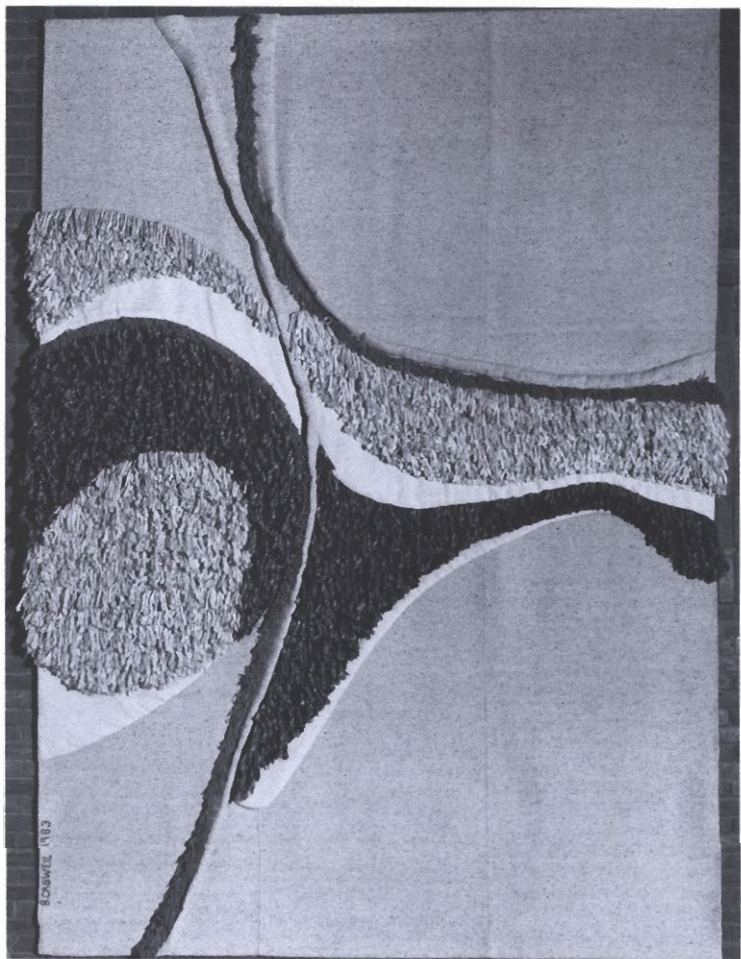
WEAVER UNKNOWN



"AHAR HERIZ ORIENTAL RUG" CIRCA 1934

HANDWOVEN, WOOL  
10' x 14'

B R E N D A C A S W E L L



" U N T I T L E D   W A L L H A N G I N G "   1 9 8 3

HANDWOVEN, WOOL AND LINEN  
12' x 9' x 6"

DALE M. GOTTLIEB



"RUG, RUG, RUG" 1982

SILKSCREEN  
22" x 15"