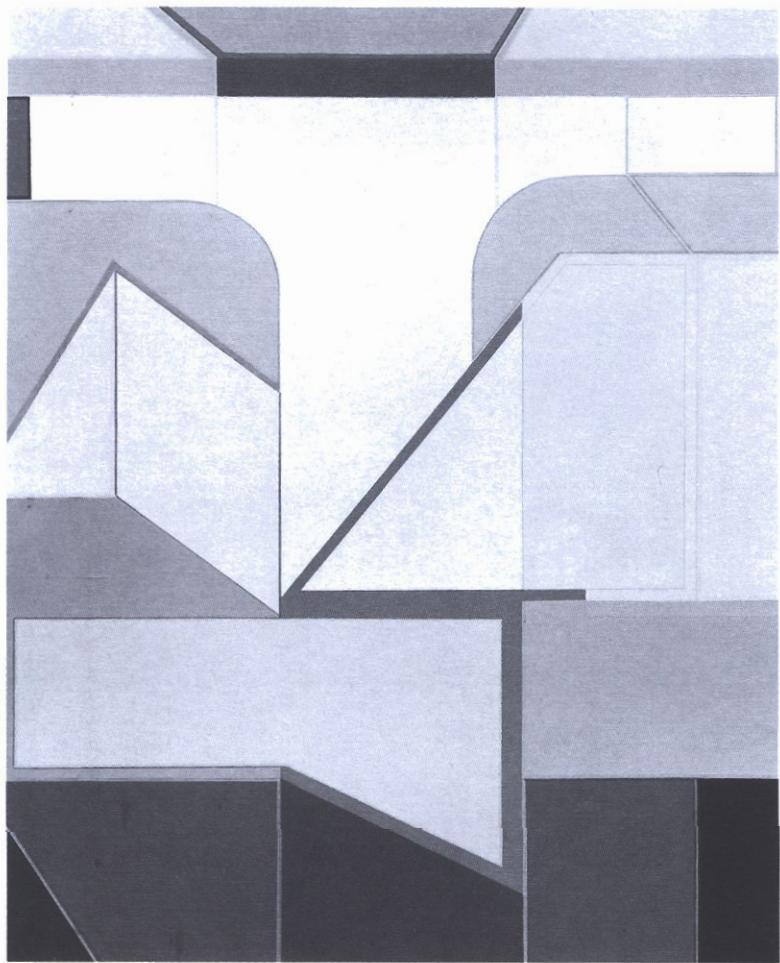


C H R I S T O P H E R K R E S S Y



" B R I D G E # 1 1 2 " 1 9 8 2

OIL ON COTTON
60" x 48"

J O A N N S T O V E R



" T H R E E S I S T E R S " 1 9 8 0

OIL ON COTTON
30" x 30"

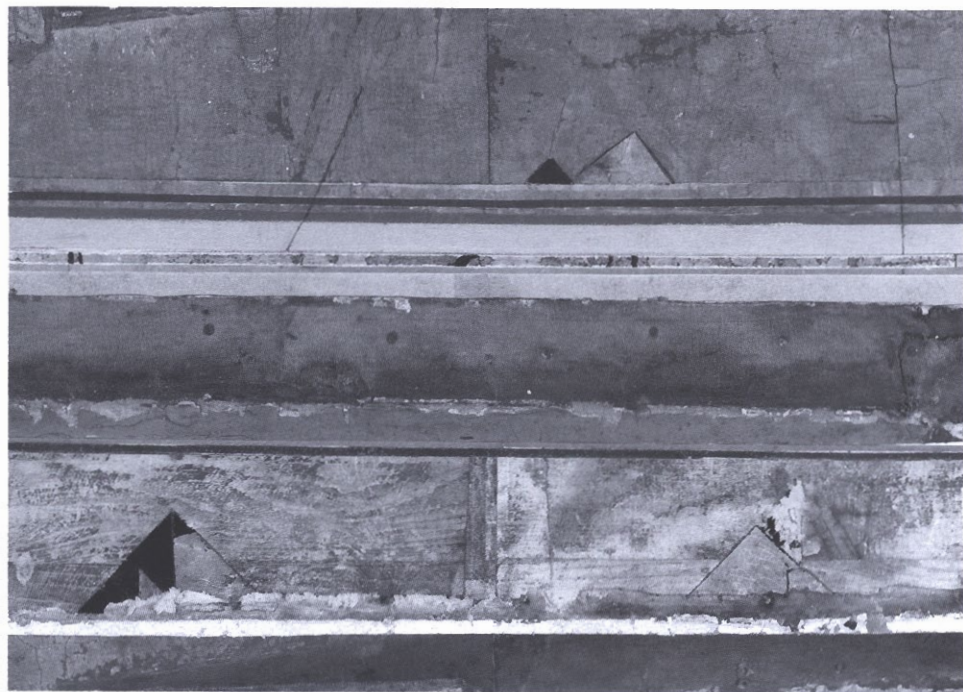
HENRY MARCEL BAKULA



"THE COLLECTOR'S EYE" 1984

OIL ON CANVAS
38" x 20"

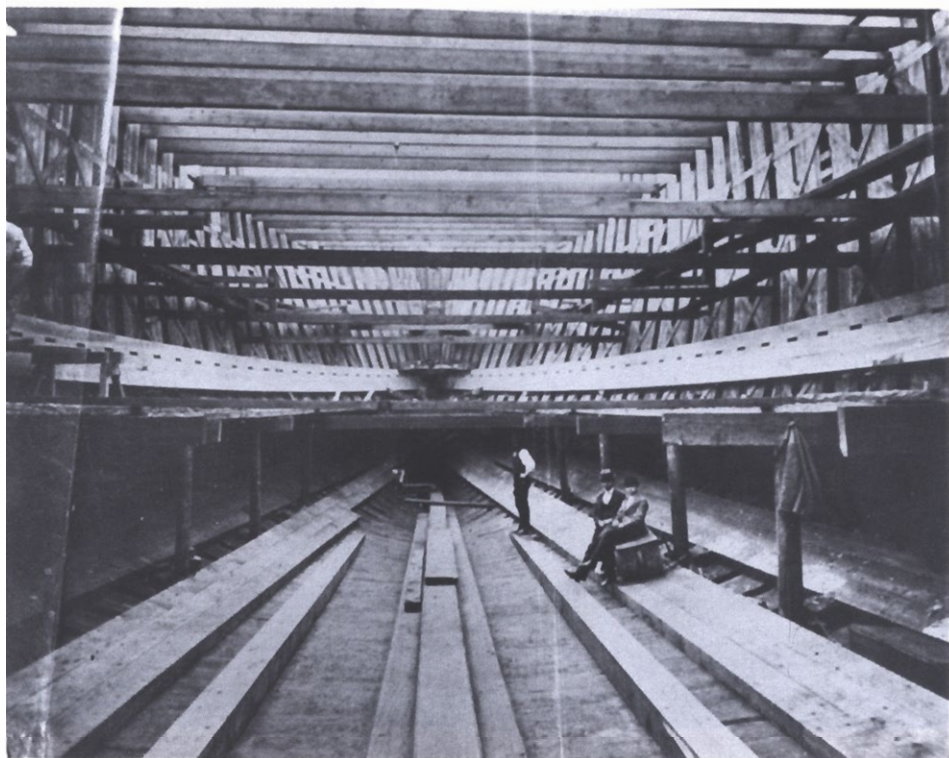
PAUL POLLARO



"PYRAMIDAL" 1982

OIL COLLAGE PAINTING
20½" × 26"

PHOTOGRAPHER UNKNOWN
PRINT BY JOHN P. ADAMS



"BELOW DECK CONSTRUCTION, MAN-OF-WAR,
PORTSMOUTH NAVAL SHIPYARD" CIRCA 1880

FROM THE SOUTH BERWICK HISTORICAL
SOCIETY'S COLLECTION

C A B O T L Y F O R D



" S E A B I R D " 1 9 8 4

GRANITE
7' x 12' x 5'

F L E U R W E Y M O U T H



" E A R L Y M O R N I N G " 1 9 8 1

TYPE C COLOR PHOTOGRAPH
8" x 10"

S. C. VALESTRO



"PILINGS AT VIKING DOCK,
PORTSMOUTH, NEW HAMPSHIRE" 1978

TYPE C COLOR PHOTOGRAPH
13" x 9"