

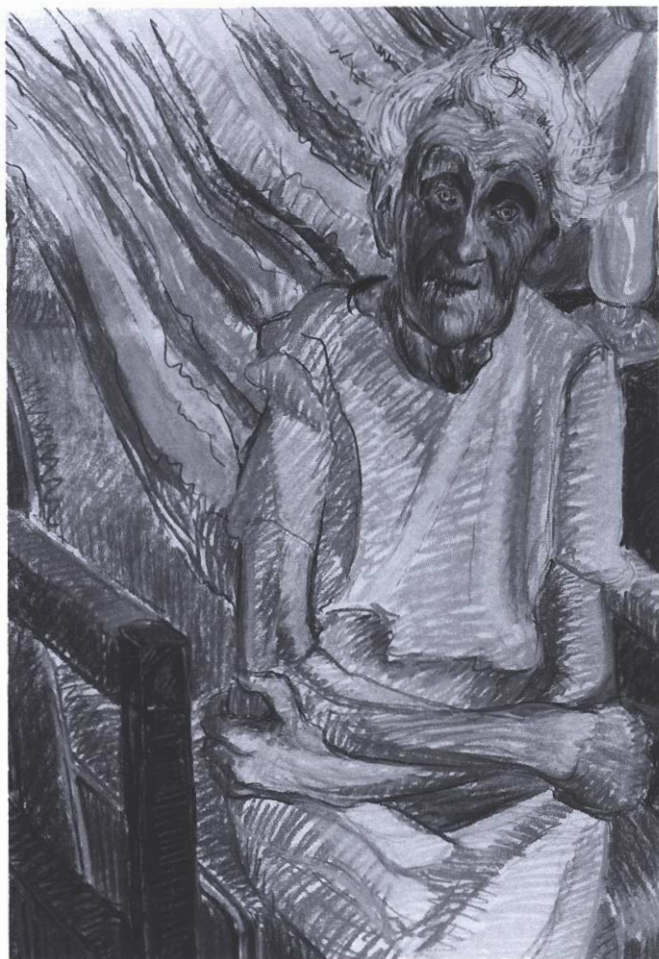
J E A N - D E N I S C R U C H E T



"ATHANOR" 1988

ITALIAN TRAVERTINE
7' x 9' x 4'

JULIE S. SERRANO



" H A N N A " 1 9 8 0

PASTEL AND PENCIL
37" × 28"

T O D D S M I T H



" T H E W I S H I N G S E A T " 1 9 8 1

OIL COLOR OVER COLOR PHOTOGRAPH
23" x 21"

B I L L F I N N E Y



" C O U N T R Y F A I R , C O R N I S H , N E W H A M P S H I R E " 1 9 8 2

BLACK AND WHITE PHOTOGRAPH
10" x 8"

N O R M A N F R A N C O E U R



" W A T E R A N D R E E D S " 1 9 8 5

TYPE C COLOR PHOTOGRAPH
11" x 14"

W I N S L O W E A V E S



" T H E B E R R Y E L M S C U L P T U R E " 1 9 8 3 - 8 4

ELM WOOD
10' x 3' x 3'

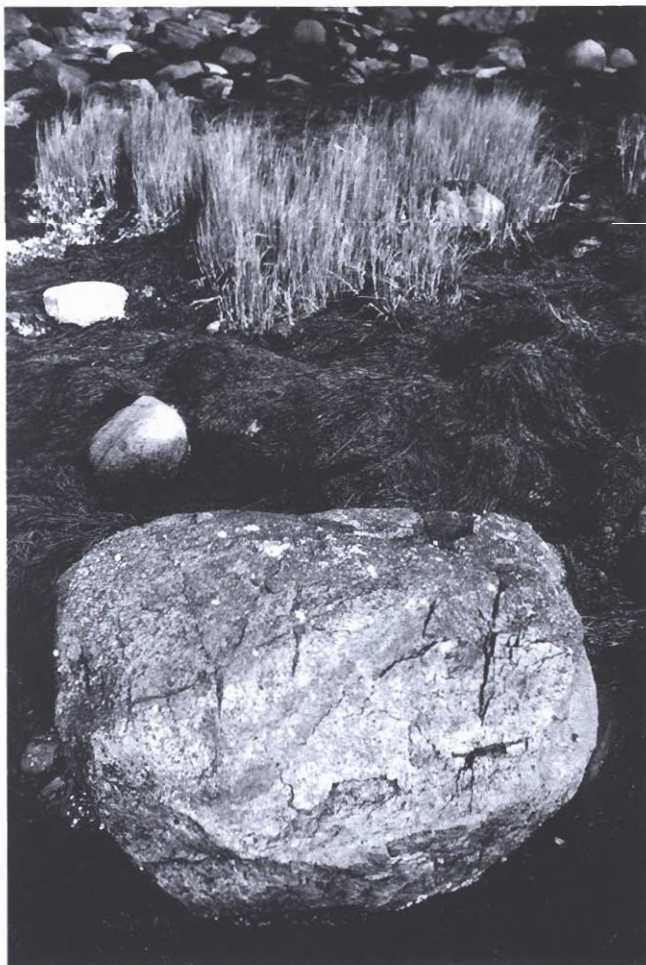
C H A S E M C N I S S



" P O R C E L A I N D O O R K N O B " 1 9 8 3

CIBACHROME PHOTOGRAPH
8" x 10"

J O H N P . A D A M S



" R O C K A N D E E L G R A S S , F A L L " 1 9 7 5

CIBACHROME PHOTOGRAPH
24" x 20"