

# POLE P407-5F

## DESCRIPTION

The pole shall consist of a clam-shell base cover and a shaft. The base cover shall be made from a two-piece casting secured to the pole shaft with six s/s tamper resistant screws. The base shall be round in shape. The castings shall be of uniform wall thickness with no warping or mold shifting and shall be formed true to the original pattern with complete detail. The 5"OD shaft shall be made of extruded aluminum with 12 flutes and shall be circumferentially welded to a cast aluminum base plate.

## DIMENSIONS

The pole shall be XX' in height. The base shall be 22-1/2" in diameter.

## MOUNTING

The pole shall be supplied with a sturdy steel template and with 4 hot dipped galvanized 3/4" x 24" long "L" type anchor bolts with two nuts and two washers each. These will install on a 8-1/2" bolt circle with anchor bolts extending 3" above the ground level. An optional 3"H x 4"OD or 3"OD tenon is available for fixture mounting. Custom tenon sizes may be available. A 2-1/4"W x 3-1/2"H service door shall be located at 12" to center from the bottom of pole.

## FINISH

All applicable parts shall receive a standard electrostatically applied thermoset polyester powder coat smooth semi gloss finish with a four part corrosion inhibiting process.

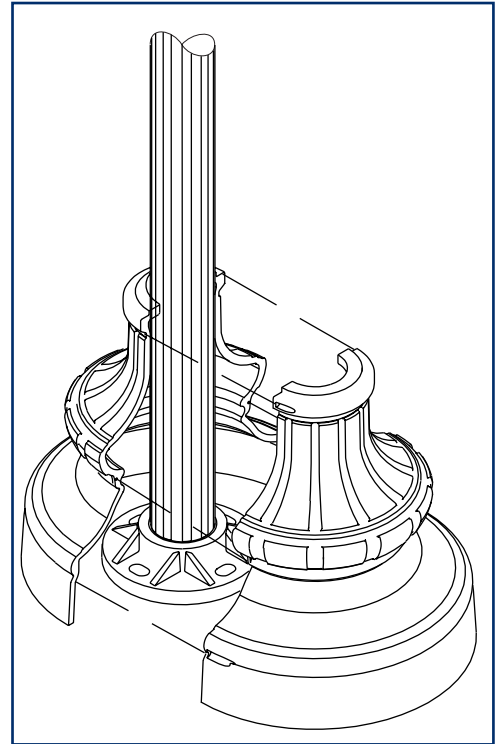
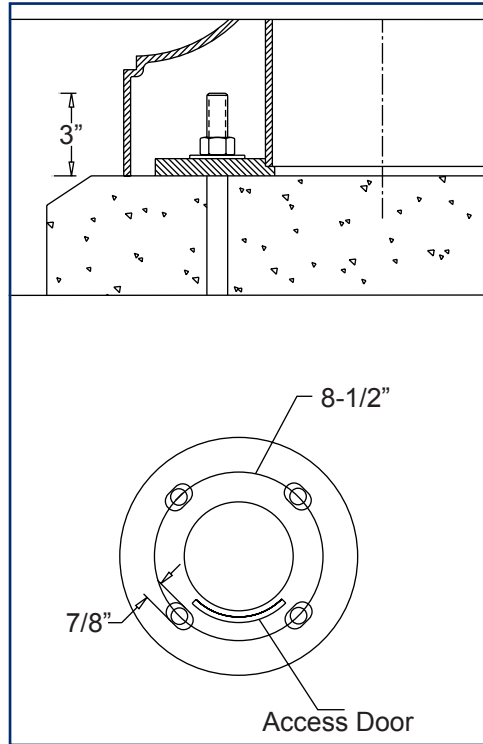
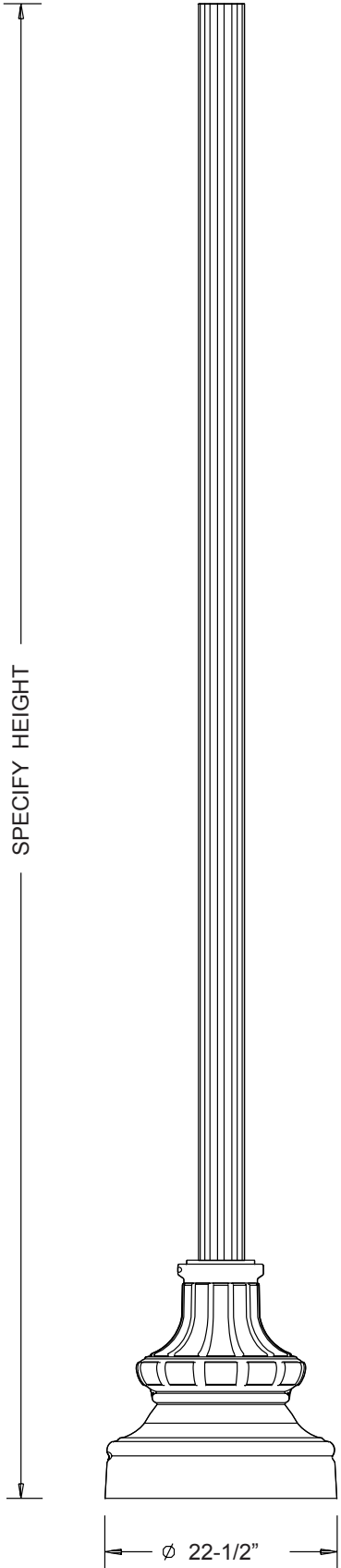
## CONTACT INFORMATION



(800) 267-3175 (905) 238-2648  
 1280 Fewster Drive Mississauga  
 Ontario L4W 1A4 Canada  
 Fax (905) 238-9060  
 Email sales@hcilighting.com  
 WEB www.hcilighting.com

## COLOR AND OPTIONS

There are five standard RAL colors to choose from: Black 9011, Green 6005, Bronze 8019, Grey 7012 and White 9016. Custom colors are available for an upcharge. A variety of options is available. For more information please see the *Finishes* and *Options* sections.



## EPA INFORMATION

Model number	Height (ft)	Wall thickness (in)	EPA rating		
			80 mph (sq.ft)	90 mph (sq.ft)	100 mph (sq.ft)
P407-5FA-10	10	0.125	12.14	9.71	7.91
P407-5FA-12	12	0.125	8.93	7.14	5.81
P407-5FA-14	14	0.125	6.79	5.43	4.42
P407-5FA-16	16	0.125	4.64	3.71	3.02
P407-5FA-18	18	0.125	3.57	2.86	2.33
P407-5FA-20	20	0.125	2.14	1.71	1.40
P407-5FE-10	10	0.226	23.21	18.57	15.12
P407-5FE-12	12	0.226	17.86	14.29	11.63
P407-5FE-14	14	0.226	14.29	11.43	9.30
P407-5FE-16	16	0.226	11.79	9.43	7.67
P407-5FE-18	18	0.226	9.29	7.43	6.05
P407-5FE-20	20	0.226	7.14	5.71	4.65

HCI, Ltd. neither designs nor recommends concrete footing size

## OPTIONS

- SRT** single receptacle
- DRT** double receptacle
- GFI** GFI receptacle
- BA1-BM** single bolt-on 24"L banner arm
- BA1-CM** single clamp-on 24"L banner arm
- BA1H-BM** single bolt-on 24"L banner arm with hog ring
- BA1H-CM** single clamp-on 24"L banner arm with hog ring
- BA1-BBM** single bolt-on break-away 24"L banner arm
- BA1H-BBM** single bolt-on break-away 24"L banner arm with hog ring
- SS1-CM** single clamp-on street sign

## Ordering Sequence Example:

Luminaire	Fitter	Diffuser	Light Source	Voltage	Optical System	Arm	Configuration	Pole	Finish	Options
F100-L	B4	FPC	150HPS	120V	LV-L5	A307	2A	P407-5FA-10	RAL9011	SRT

# A378 SERIES

## DESCRIPTION

The arm shall be HCl A378-\_\_\_\_ (specify configuration) arm, consisting of a bent arm welded onto a decorative central column.

## MATERIALS

The arm shall be made of 2-7/8" OD x 3/16" thick aluminum extrusion welded onto the cast aluminum column.

## CONFIGURATION

A variety of configurations is available, most of which are illustrated below. An additional option is noted below in the bottom left-hand corner.

## INSTALLATION

Arms shall be equipped with 1-1/2" NPT male fitting for fixture mounting. Arms are not pre-wired and shall be wired by the contractor. Mounting hardware is not included.

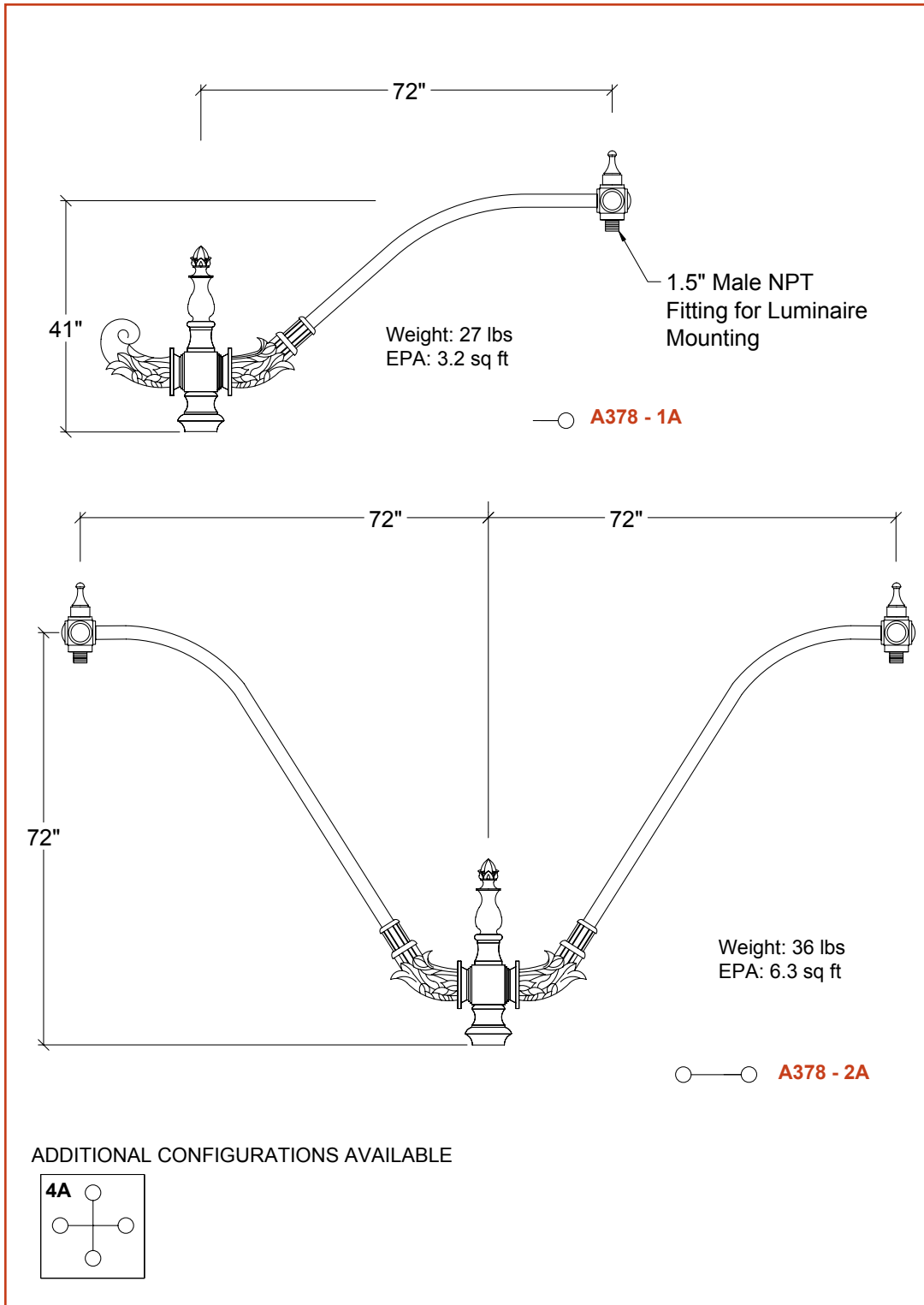
## FINISH

All applicable parts shall receive a standard electrostatically applied thermo-set polyester powder coat smooth semi gloss finish with a four part corrosion inhibiting process.

## COLORS

The five standard RAL colors are listed below. Simply check off the color applicable to your project. Custom colors are available for an additional charge. Please supply a 2" x 2" paint chip.

- Black** RAL 9011
- Green** RAL 6005
- Bronze** RAL 8019
- Grey** RAL 7012
- White** RAL 9016



(800) 267-3175 (905) 238-2648  
 1280 Fewster Drive Mississauga  
 Ontario L4W 1A4 Canada  
 Fax (905) 238-9060  
 Email [sales@hclighting.com](mailto:sales@hclighting.com)  
 WEB [www.hclighting.com](http://www.hclighting.com)

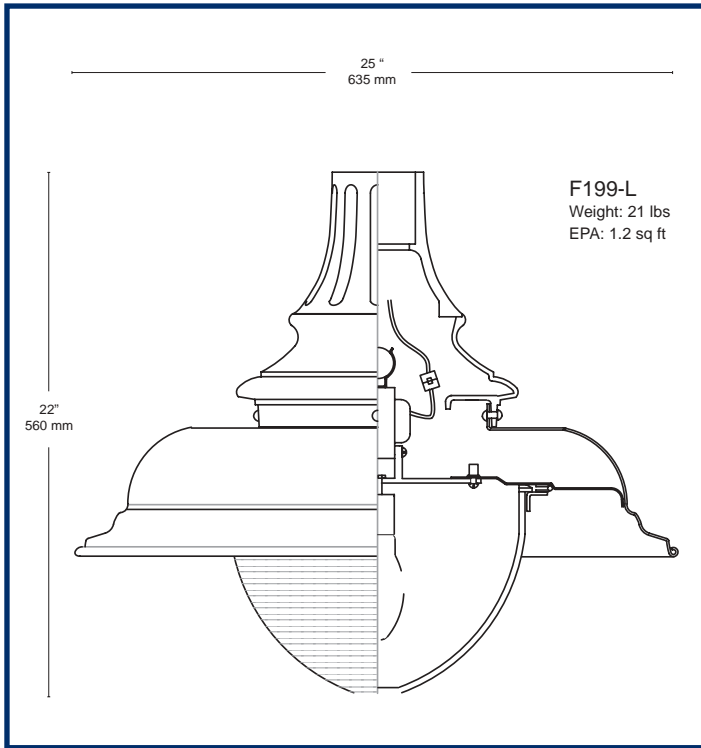
# F199 SERIES LUMINAIRE



**HCI**  
Heritage Casting & Ironworks

1280 Fewster Drive  
Mississauga ON L4W 1A4  
sales@hclighting.com  
www.hclighting.com  
Fax (905) 238-9060

Toll-free (800) 267-3175 Tel. (905) 238-2648



**Description.** The **F199** Series luminaire shall consist of an injection-molded prismatic diffuser, a spun aluminum shade assembly and a cast aluminum fitter (capital). The hinged refractive diffuser shall be secured with stainless steel hardware. The ballast shall feature quick disconnect plugs for easy ballast maintenance. The ballast shall be factory wired, tested and mounted on a keyholed cast aluminum plate together with a 4kV porcelain socket. Lamps are not included and shall be supplied by others. All electrical components shall be UL listed and labeled.

**Installation.** The fixture shall accept either a 3" OD or 4" OD tenon (please specify) and shall be secured to an arm with three hex socket screws spaced 120° apart and a security bolt. Order arm separately.

**Finish.** All applicable parts shall receive a standard electrostatically applied thermoset polyester powder coat smooth semi gloss finish with a four part corrosion inhibiting process.

To assemble a catalog number, list all codes sequentially.

## 1. SIZE

**F199-L** (25"W x 22"H)

## 2. DIFFUSER TYPE

**EAC** External Prismatic Acrylic

**EPC** External Prismatic Polycarbonate

## 3. LIGHT SOURCE (indicate wattage)

50 - 175 **MH** \_\_\_\_\_W

Option: pulse start ballast

35 - 150 **HPS** \_\_\_\_\_W

**CFL** Fluorescent \_\_\_\_\_W

**INC** Incandescent \_\_\_\_\_W

## 4. VOLTAGE

**QT** (Quad Tap 120, 208, 240, 277)

**TT** (Tri Tap 120, 277, 347)

**NOTE:** Please circle connected voltage. If none is indicated, factory will pre-wire at 120V.

**120V** Reactor

**480** Single

## 5. OPTICS

**BL** bare lamp (standard for this fixture, due to external prismatic optics)

IES type III

IES type V

For more information on optical systems, see *Options* section. Photometrics are also available in IES format - consult factory or your HCI sales representative.

## 6. OPTIONS

**FUS** internal fusing

**PCB** luminaire integrated button type photocell

**HSS** house side shield

## 7. COLOR

**Black** RAL 9011

**Green** RAL 6005

**Bronze** RAL 8019

**Grey** RAL 7012

**White** RAL 9016

**Custom**

