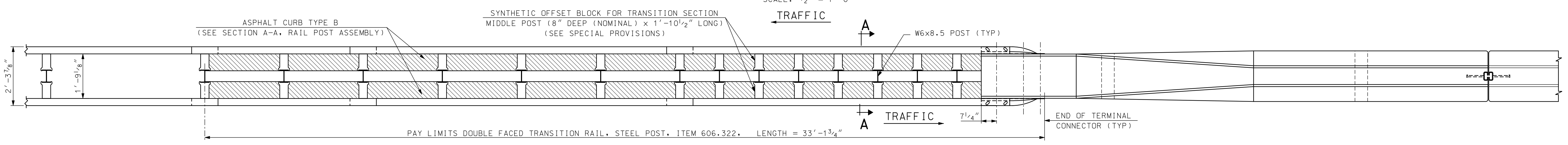
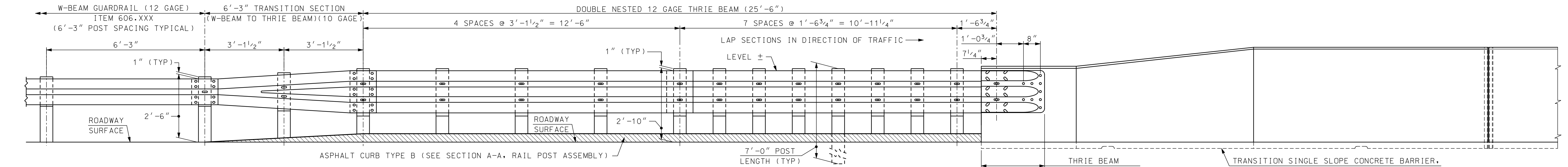


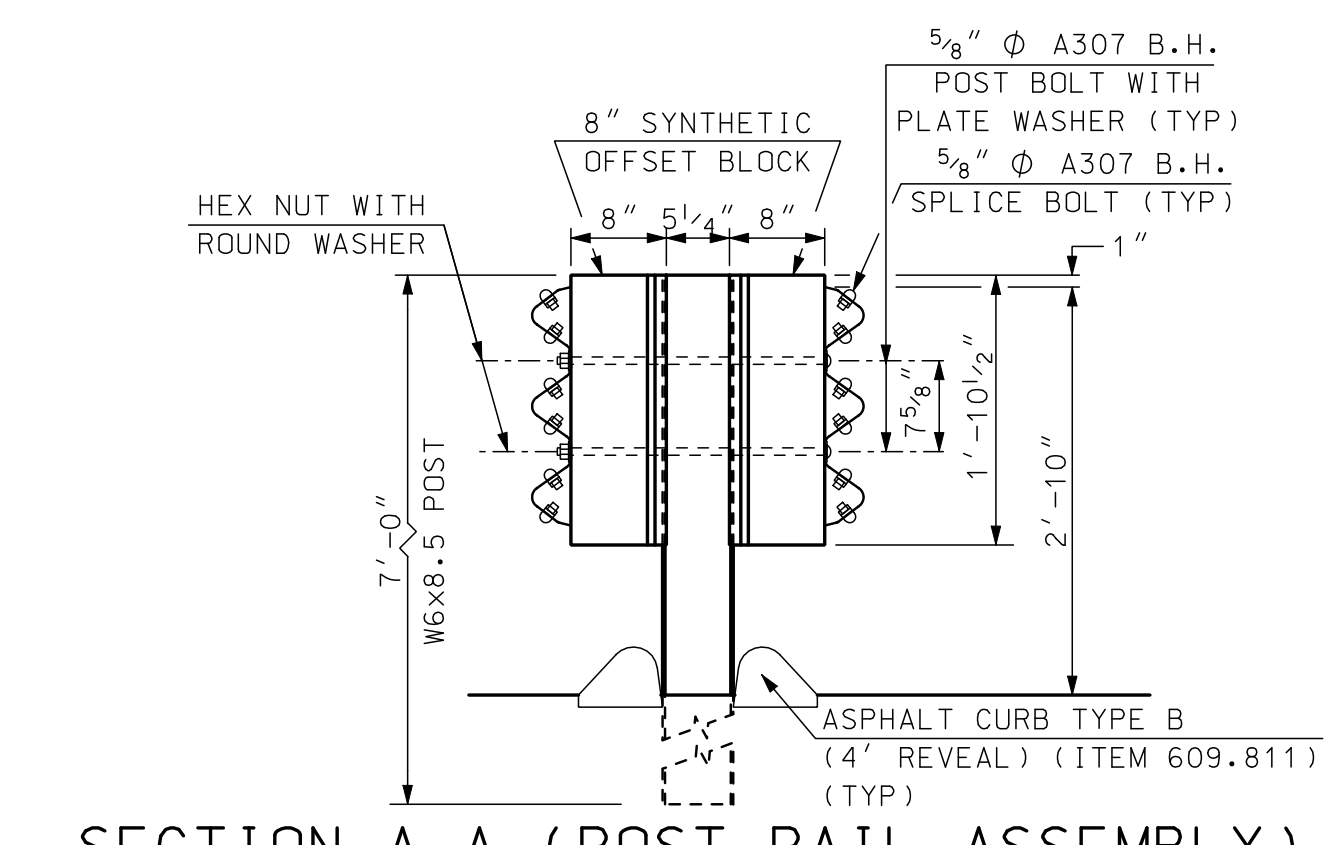
PLAN VIEW - CONCRETE BARRIER TO GUARDRAIL CONNECTION DETAIL (SINGLE RAIL)
SCALE: 1/2" = 1'-0"



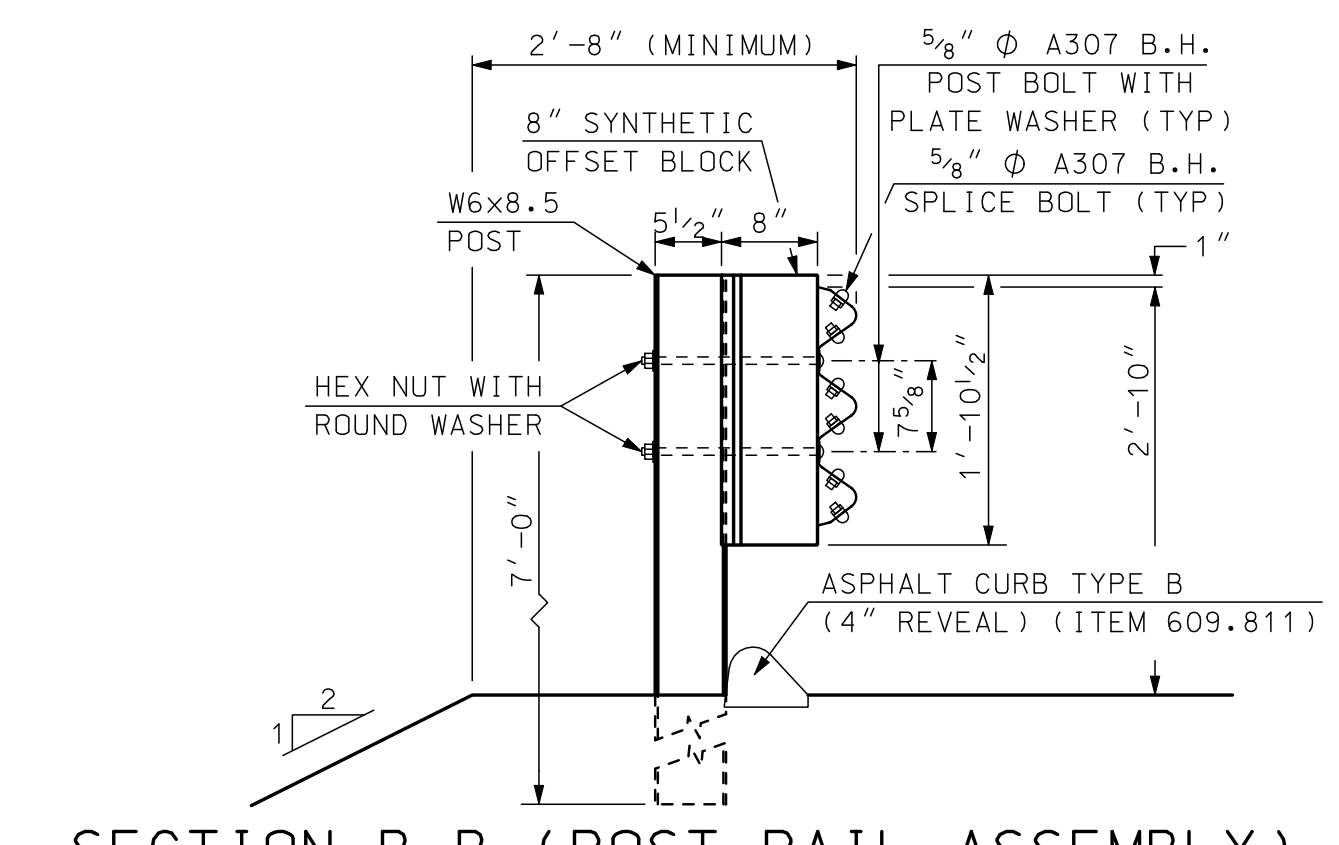
PLAN VIEW - CONCRETE BARRIER TO GUARDRAIL CONNECTION DETAIL (MEDIAN DOUBLE RAIL)
SCALE: 1/2" = 1'-0"



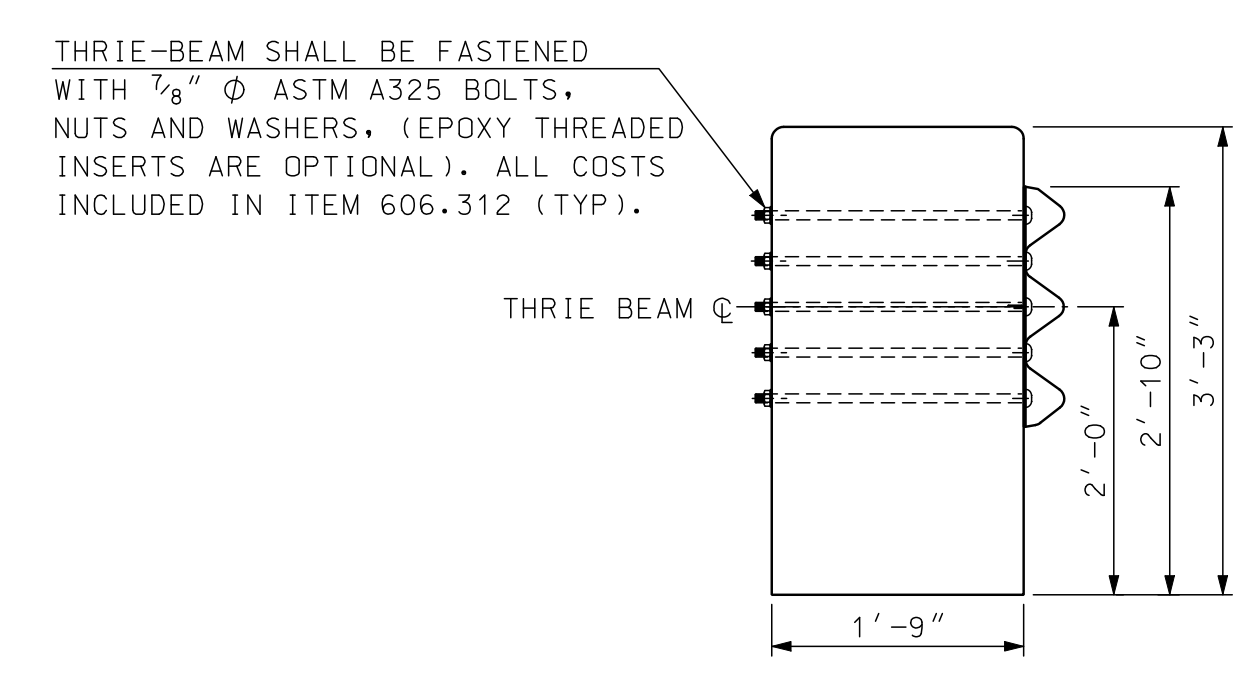
ELEVATION - APPROACH RAIL
SCALE: 1/2" = 1'-0"



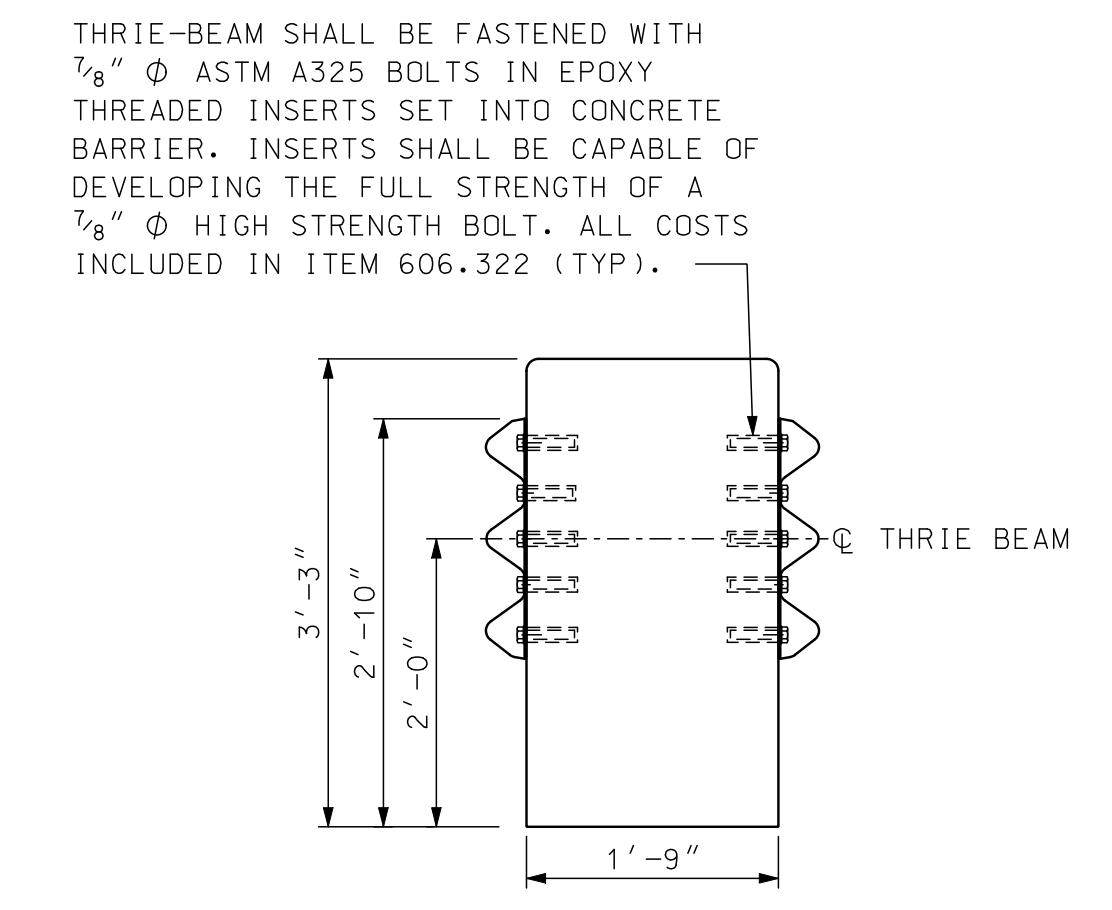
SECTION A-A (POST RAIL ASSEMBLY)
SCALE: 3/4" = 1'-0"



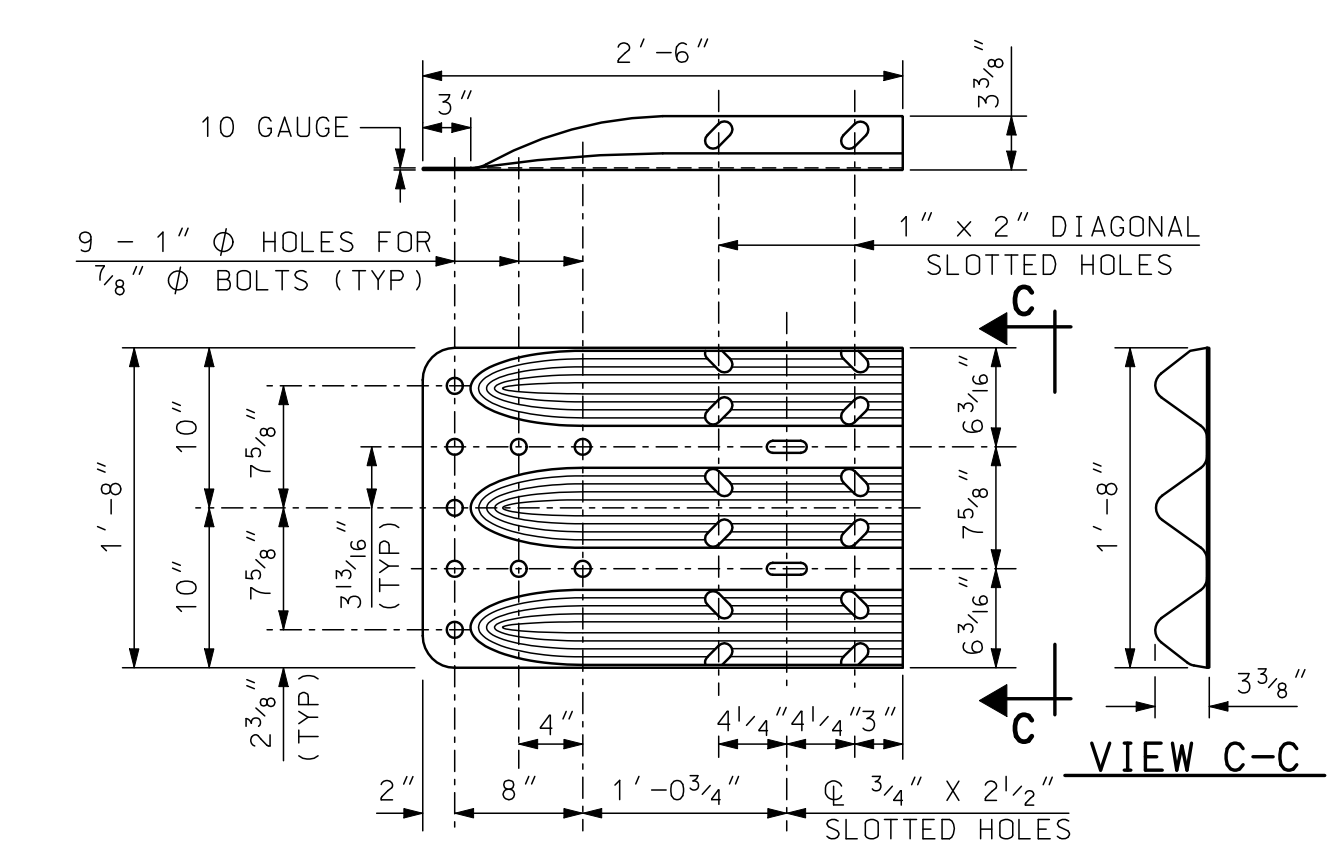
SECTION B-B (POST RAIL ASSEMBLY)
SCALE: 3/4" = 1'-0"



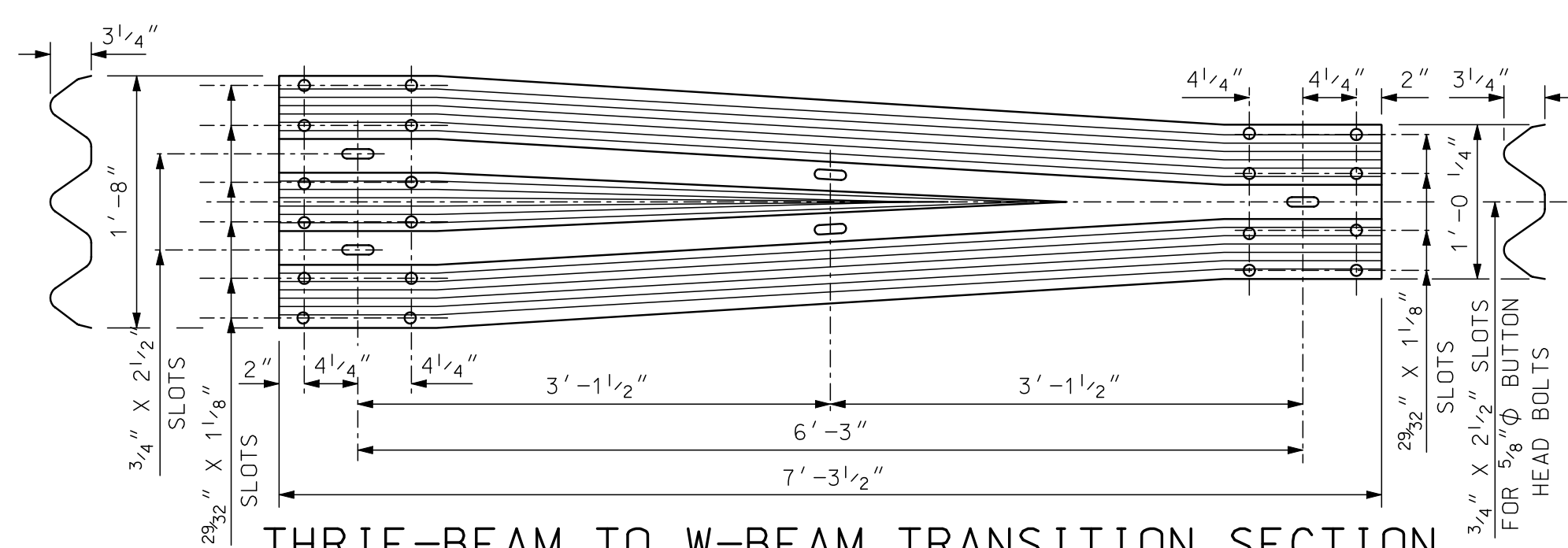
THRIE BEAM ATTACHMENT
SCALE: 3/4" = 1'-0"



MEDIAN THRIE BEAM ATTACHMENT
SCALE: 3/4" = 1'-0"



THRIE-BEAM TERMINAL CONNECTOR
SCALE: 1" = 1'-0"



THRIE-BEAM TO W-BEAM TRANSITION SECTION
SCALE: 1" = 1'-0"

NOTES:

- (1) ALL THRIE BEAM RAIL, INCLUDING TRANSITION SECTION, SHALL BE GALVANIZED 12 GAUGE. ALL TERMINAL CONNECTORS SHALL BE GALVANIZED 10 GAUGE.
- (2) CONNECTIONS TO CONCRETE BARRIER SHALL BE APPROVED 7/8" Ø GALVANIZED HIGH STRENGTH THROUGH BOLTS IN CORE DRILLED HOLES. CHECK ACTUAL HOLE SPACING BEFORE CORING BOLT HOLES.
- (3) ALL CONNECTIONS FOR THE THRIE BEAM RAIL AND TERMINAL CONNECTOR SHALL LAP IN THE DIRECTION OF TRAFFIC.

STATE OF NEW HAMPSHIRE
DEPARTMENT OF TRANSPORTATION, CONCORD, N.H.

TRANSITION SINGLE SLOPE CONCRETE BARRIER
AND GUARDRAIL (STEEL)

REVISION DATES
2-4-09 ORIG.

SHEET SCALE
AS NOTED