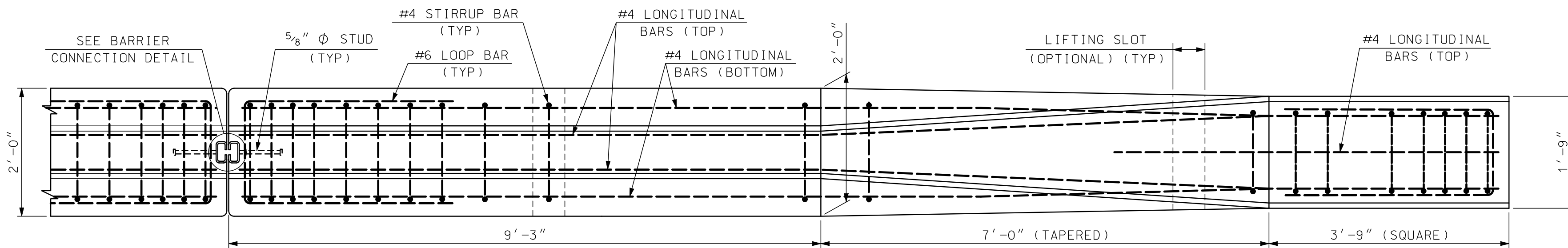
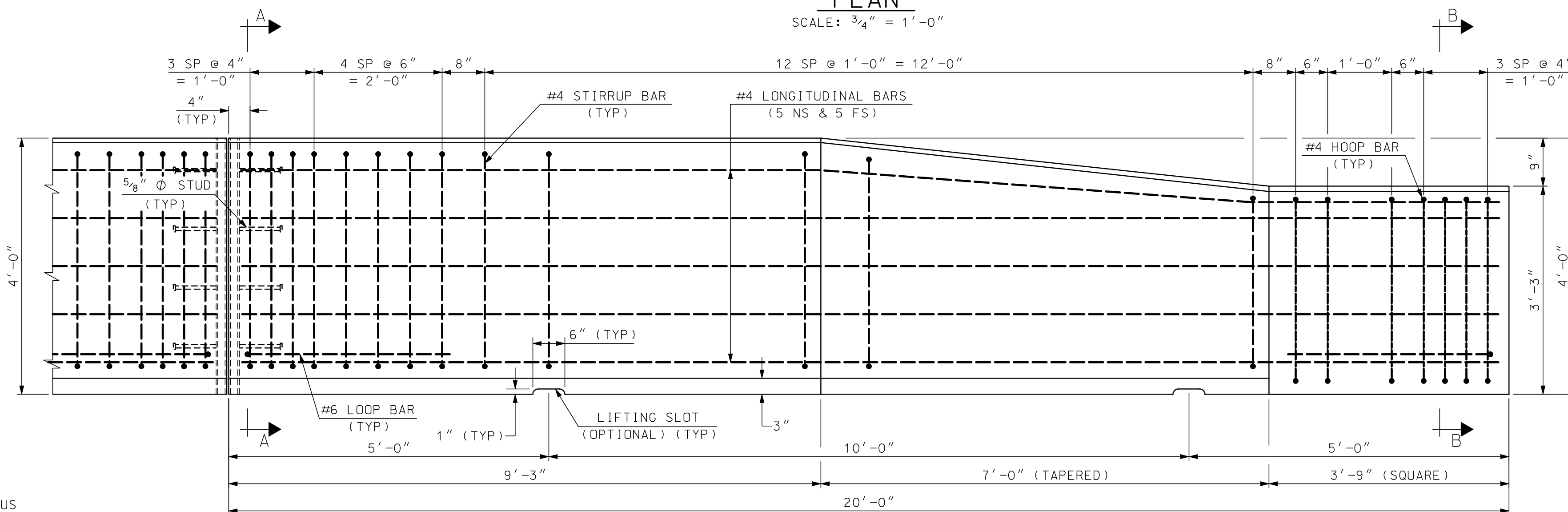


FRONT SIDE
STRUCTURAL TUBE DETAILS
SCALE: 1" = 1'-0"

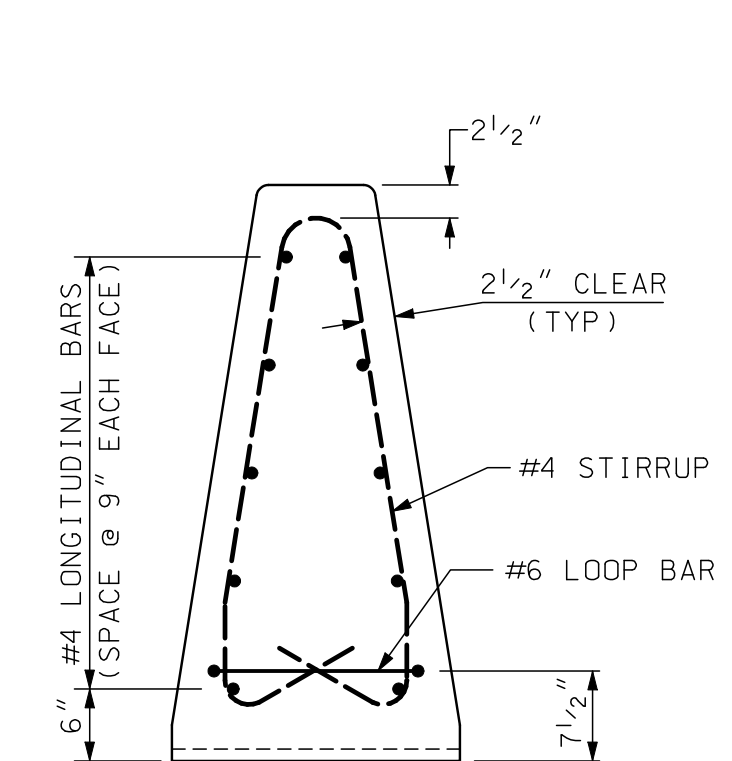
SIDE FRONT
I-BEAM DETAILS
SCALE: 1" = 1'-0"



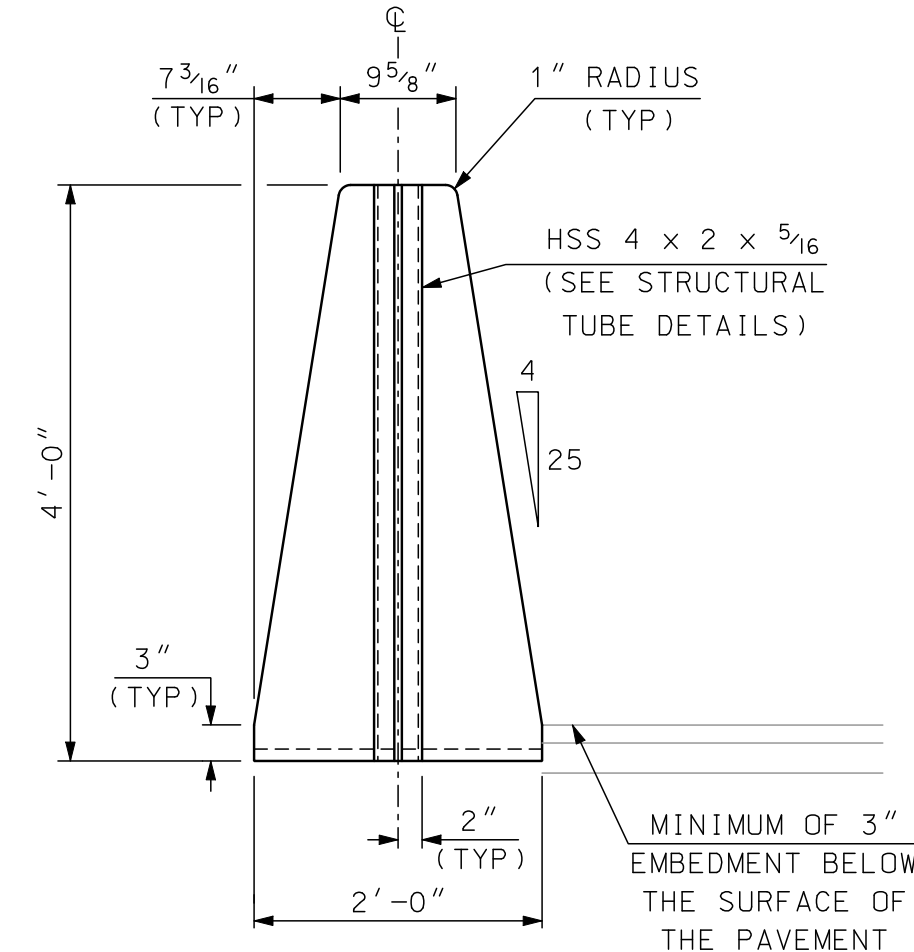
PLAN
SCALE: 3/4" = 1'-0"



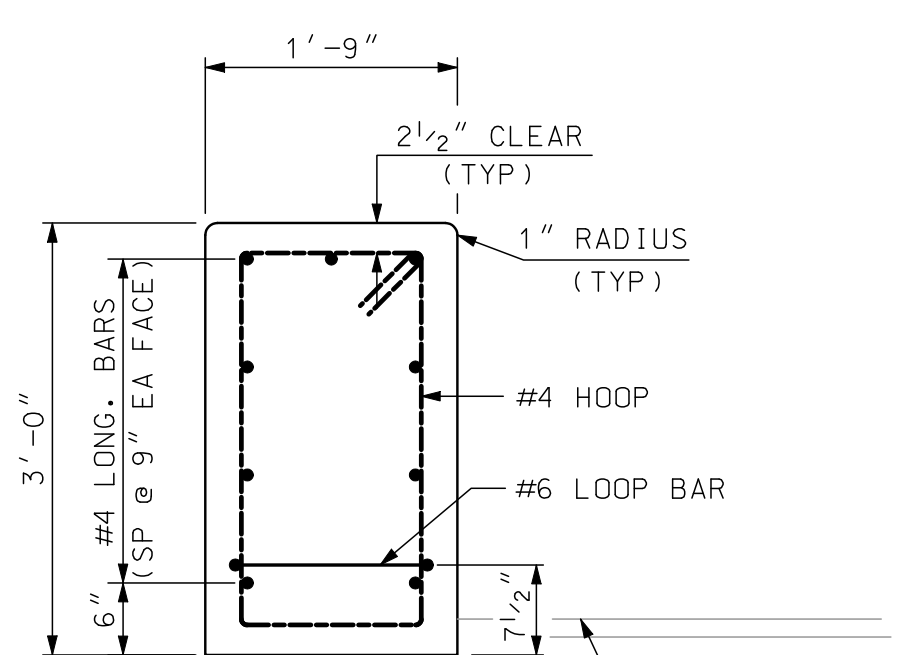
ELEVATION
SCALE: 3/4" = 1'-0"



SECTION A-A (REINFORCEMENT)
SCALE: 3/4" = 1'-0"



END VIEW (MASONRY)
SCALE: 3/4" = 1'-0"



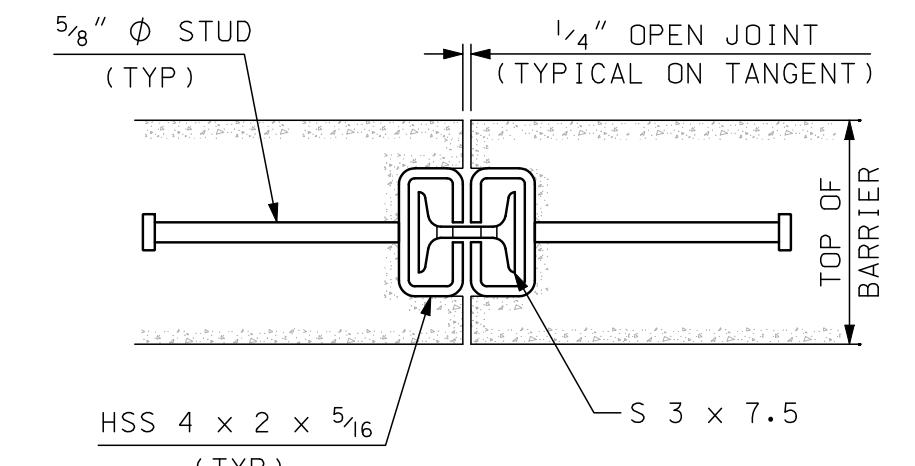
SECTION B-B (MASONRY & REINFORCEMENT)
SCALE: 3/4" = 1'-0"

GENERAL NOTES

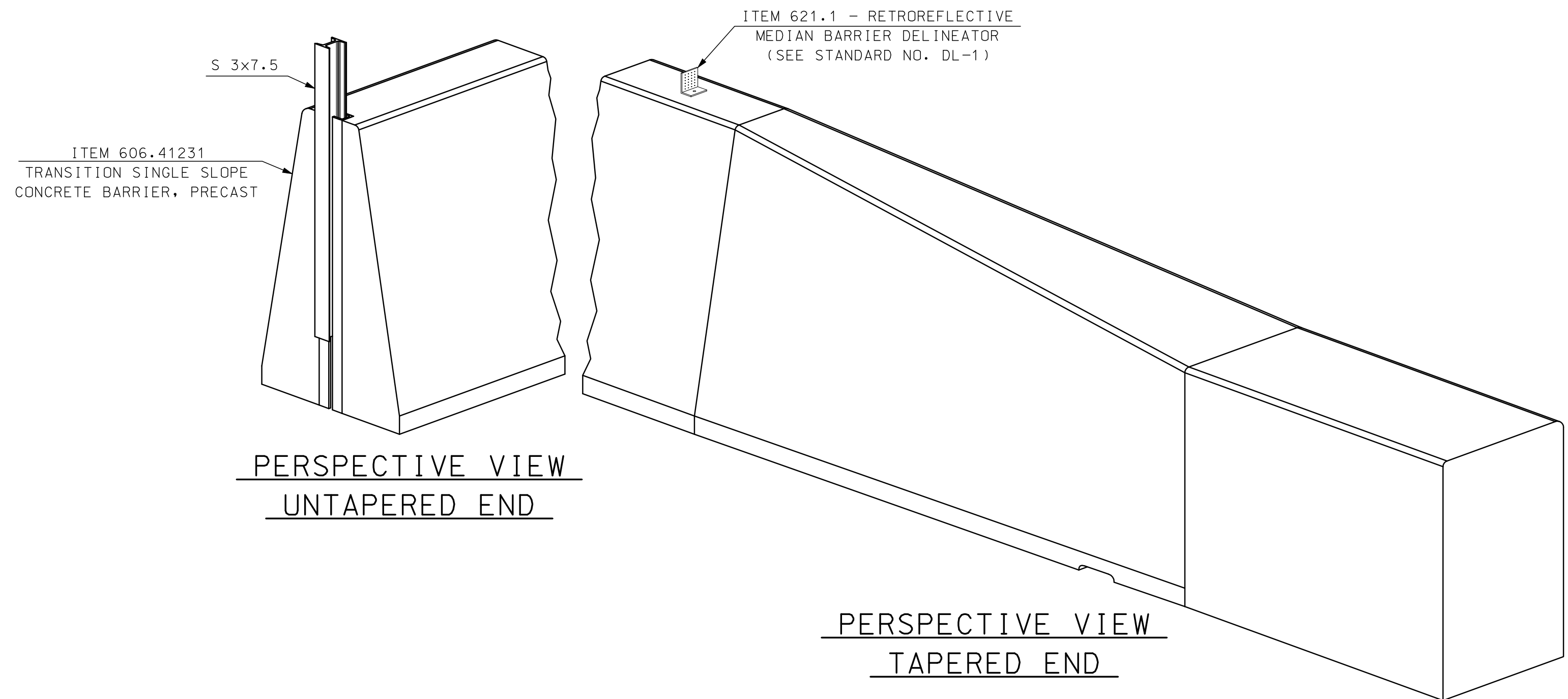
1. THE CONCRETE BARRIER DETAILS, AS SHOWN ON THIS SHEET, ARE IN COMPLIANCE WITH THE REQUIREMENTS OF NCHRP REPORT 350, TL 4.
2. CONCRETE BARRIER SHALL BE FURNISHED BY THE CONTRACTOR AND PAID AS ITEM 606.41231, TRANSITION SINGLE SLOPE CONCRETE BARRIER, PRECAST. END TREATMENTS AND CONNECTIONS TO EXISTING BARRIERS, WHEN REQUIRED, SHALL BE SUBSIDIARY TO ITEM 606.41231.
3. I-BEAMS AND STRUCTURAL TUBES SHALL BE GALVANIZED AFTER FABRICATION.
4. STUD WELDING SHALL BE IN ACCORDANCE WITH ITEM 547.
5. SLOTS IN STRUCTURAL TUBES SHALL BE CUT WITH MECHANICALLY GUIDED MEANS TO A SMOOTH, UNIFORM SURFACE MEETING A SURFACE ROUGHNESS OF 25 μ OR BETTER (ANSI B46.1).

MATERIAL NOTES

1. THE BARRIERS SHALL BE LIGHT COLORED CLASS "AA" CONCRETE HAVING A MINIMUM 28 DAY COMPRESSION STRENGTH OF 4,000 PSI. BARRIERS SHALL HAVE A SMOOTH UNIFORM SURFACE FREE OF DEFECTS AND IRREGULARITIES. CASTING DATE SHALL BE SHOWN ON BARRIER. ALL EXPOSED EDGES OF CONCRETE SHALL BE CHAMFERED 3/4", UNLESS NOTED OTHERWISE.
2. ALL REINFORCING STEEL SHALL BE AASHTO M31 (ASTM-A615) GRADE 60, EPOXY COATED. REINFORCEMENT SHOWN IS THE MINIMUM REQUIRED.
3. EACH BARRIER UNIT SHALL INCLUDE ONE S 3x7.5 AS SHOWN ON THIS PLAN SHEET.
4. SHOP DRAWINGS, SHALL INCLUDE REINFORCING SCHEDULE.



BARRIER CONNECTION DETAIL
SCALE: 2" = 1'-0"



REVISION DATES
2-4-09 ORIG.

SHEET SCALE AS NOTED

STATE OF NEW HAMPSHIRE
DEPARTMENT OF TRANSPORTATION, CONCORD, N.H.

TRANSITION SINGLE SLOPE CONCRETE BARRIER, PRECAST