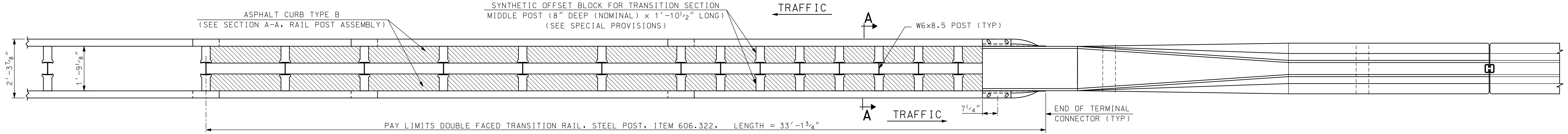


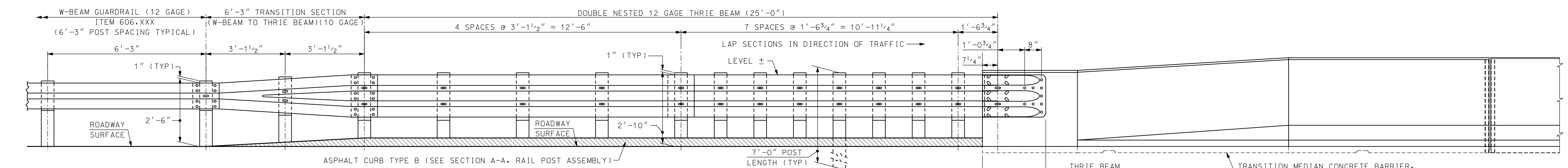
PLAN VIEW - CONCRETE BARRIER TO GUARDRAIL CONNECTION DETAIL (SINGLE RAIL)

SCALE: 1/2" = 1'-0"



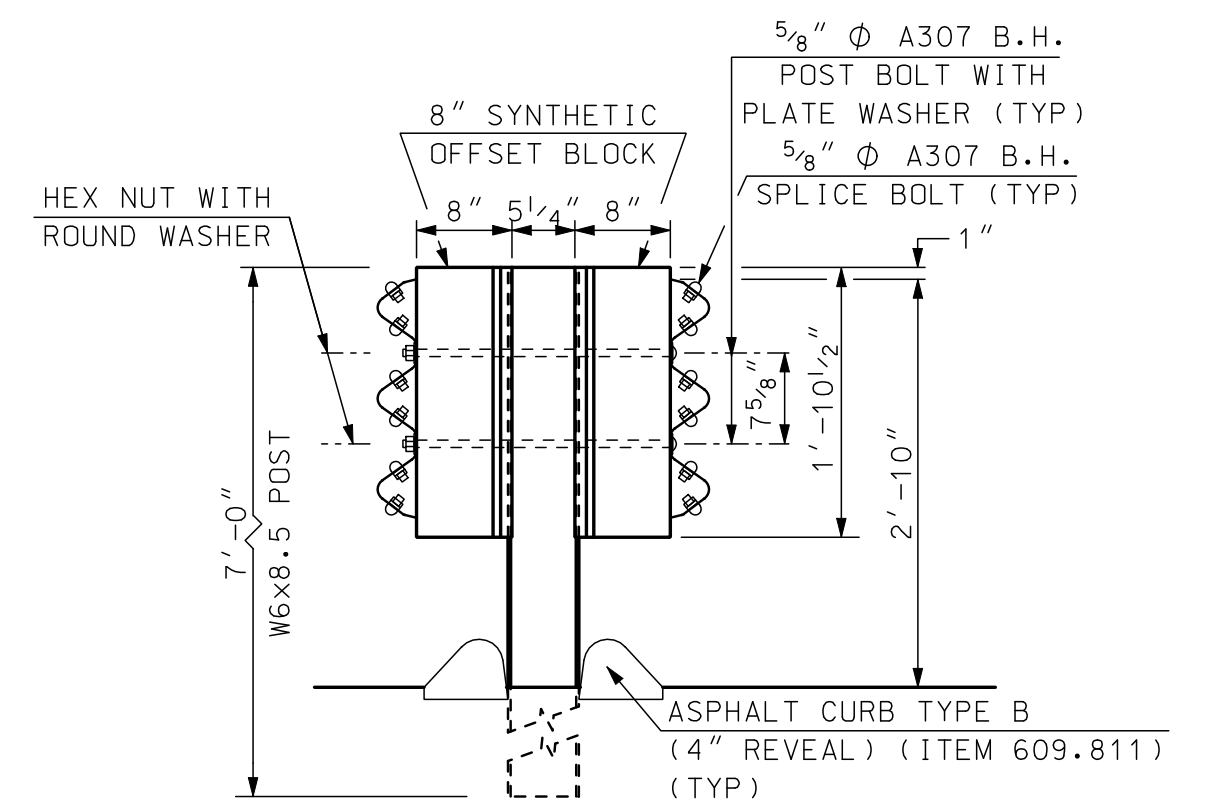
PLAN VIEW - CONCRETE BARRIER TO GUARDRAIL CONNECTION DETAIL (MEDIAN DOUBLE RAIL)

SCALE: 1/2" = 1'-0"



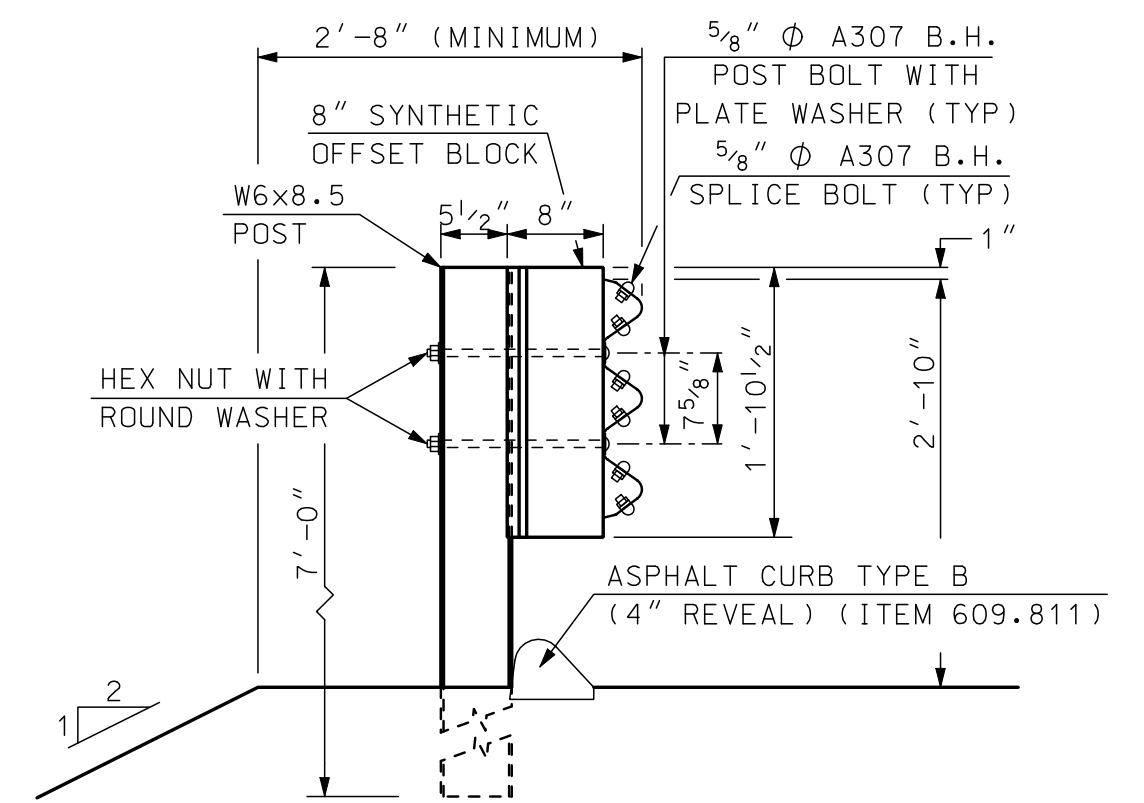
ELEVATION - APPROACH RAIL

SCALE: 1/2" = 1'-0"



SECTION A-A (POST RAIL ASSEMBLY)

SCALE: 3/4" = 1'-0"

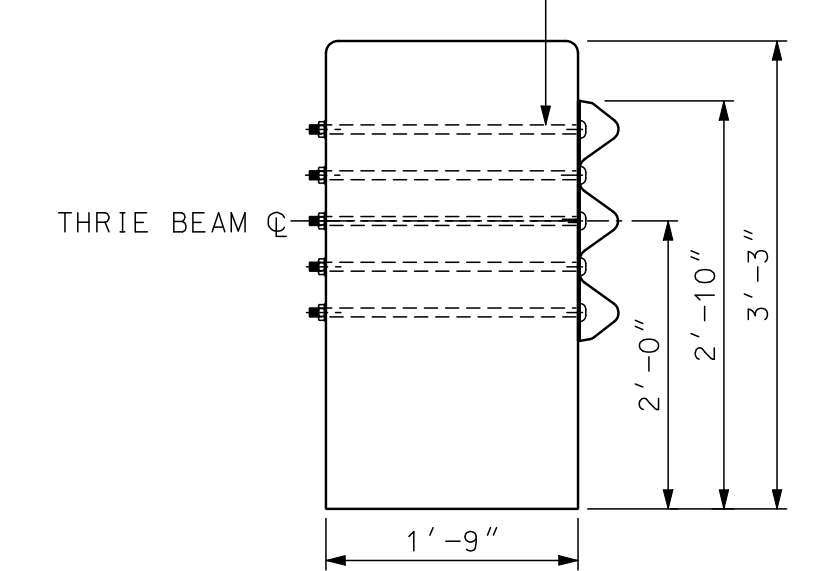


SECTION B-B (POST RAIL ASSEMBLY)

SCALE: 3/4" = 1'-0"

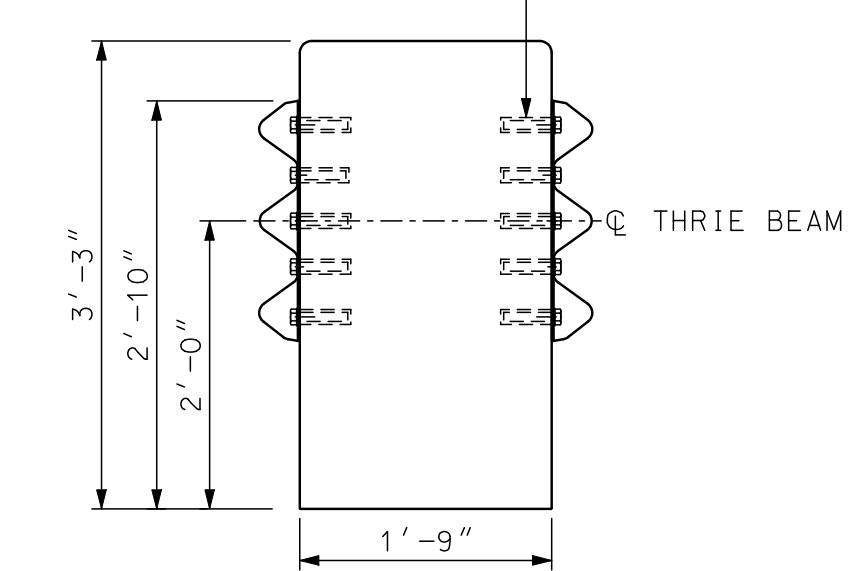
THRIE-BEAM SHALL BE FASTENED WITH 7/8" ϕ ASTM A325 BOLTS, NUTS AND WASHERS. (EPOXY THREADED INSERTS ARE OPTIONAL). ALL COSTS INCLUDED IN ITEM 606.312 (TYP).

THRIE-BEAM SHALL BE FASTENED WITH 7/8" ϕ ASTM A325 BOLTS IN EPOXY THREADED INSERTS SET INTO CONCRETE BARRIER. INSERTS SHALL BE CAPABLE OF DEVELOPING THE FULL STRENGTH OF A 7/8" ϕ HIGH STRENGTH BOLT. ALL COSTS INCLUDED IN ITEM 606.322 (TYP).



THRIE BEAM ATTACHMENT

SCALE: 3/4" = 1'-0"



MEDIAN THRIE BEAM ATTACHMENT

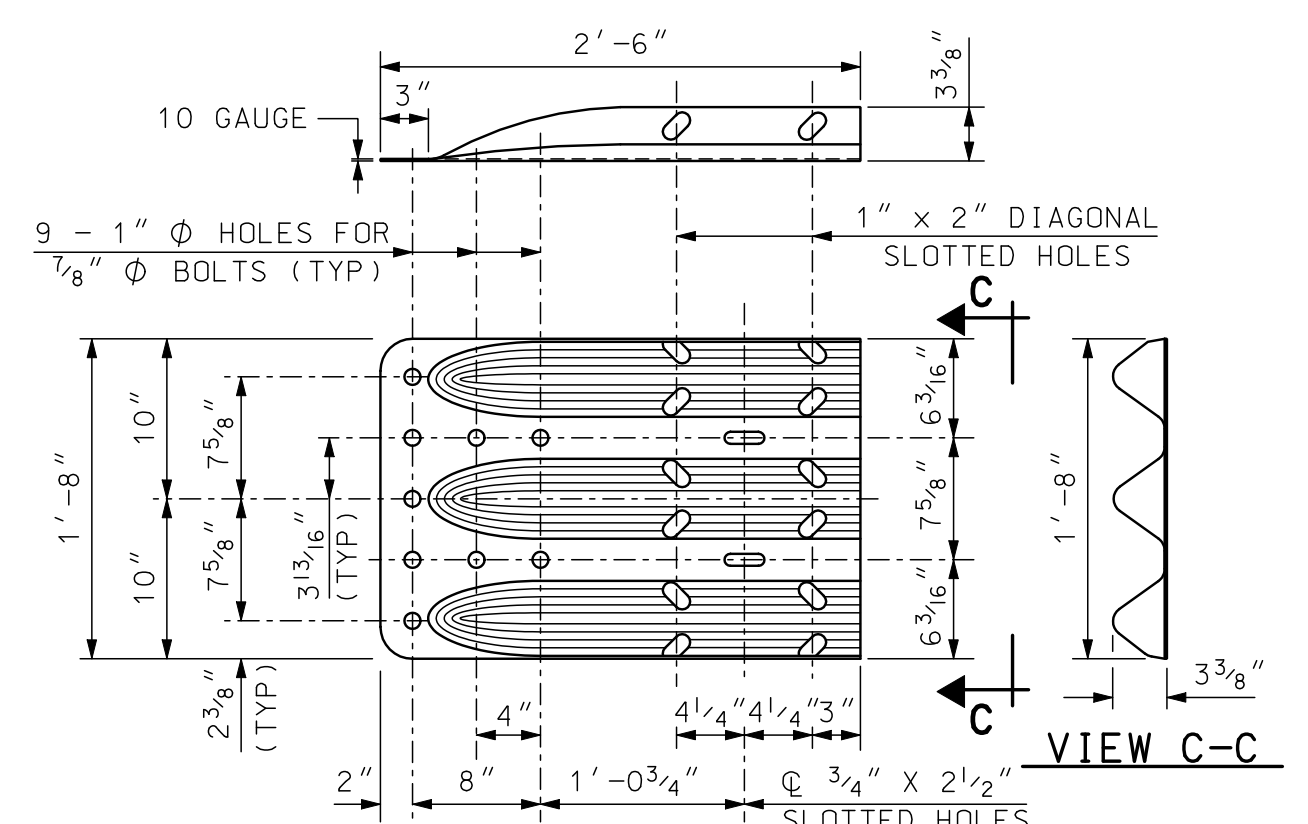
SCALE: 3/4" = 1'-0"

NOTES:

- (1) ALL THRIE BEAM RAIL, INCLUDING TRANSITION SECTION, SHALL BE GALVANIZED 12 GAUGE. ALL TERMINAL CONNECTORS SHALL BE GALVANIZED 10 GAUGE.
- (2) CONNECTIONS TO CONCRETE BARRIER SHALL BE APPROVED 7/8" ϕ GALVANIZED HIGH STRENGTH THROUGH BOLTS IN CORE DRILLED HOLES. CHECK ACTUAL HOLE SPACING BEFORE CORING BOLT HOLES.
- (3) ALL CONNECTIONS FOR THE THRIE BEAM RAIL AND TERMINAL CONNECTOR SHALL LAP IN THE DIRECTION OF TRAFFIC.

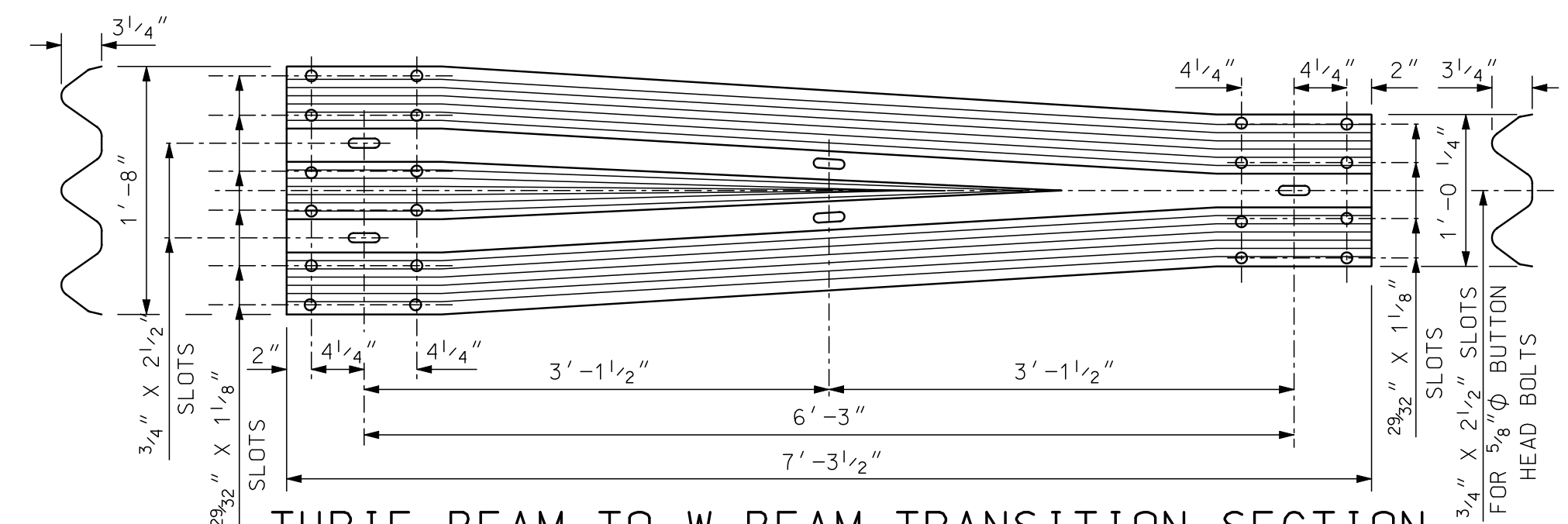
ITEM NUMBERS:

- 606.312 - SINGLE FACED TRANSITION RAIL, STEEL POST
- 606.322 - DOUBLE FACED TRANSITION RAIL, STEEL POST



THRIE-BEAM TERMINAL CONNECTOR

SCALE: 1" = 1'-0"



THRIE-BEAM TO W-BEAM TRANSITION SECTION

SCALE: 1" = 1'-0"

REVISION DATES

2-4-09 ORIG.

SHEET SCALE AS NOTED

STATE OF NEW HAMPSHIRE
DEPARTMENT OF TRANSPORTATION, CONCORD, N.H.

TRANSITION F-SHAPE BARRIER AND GUARDRAIL (STEEL)