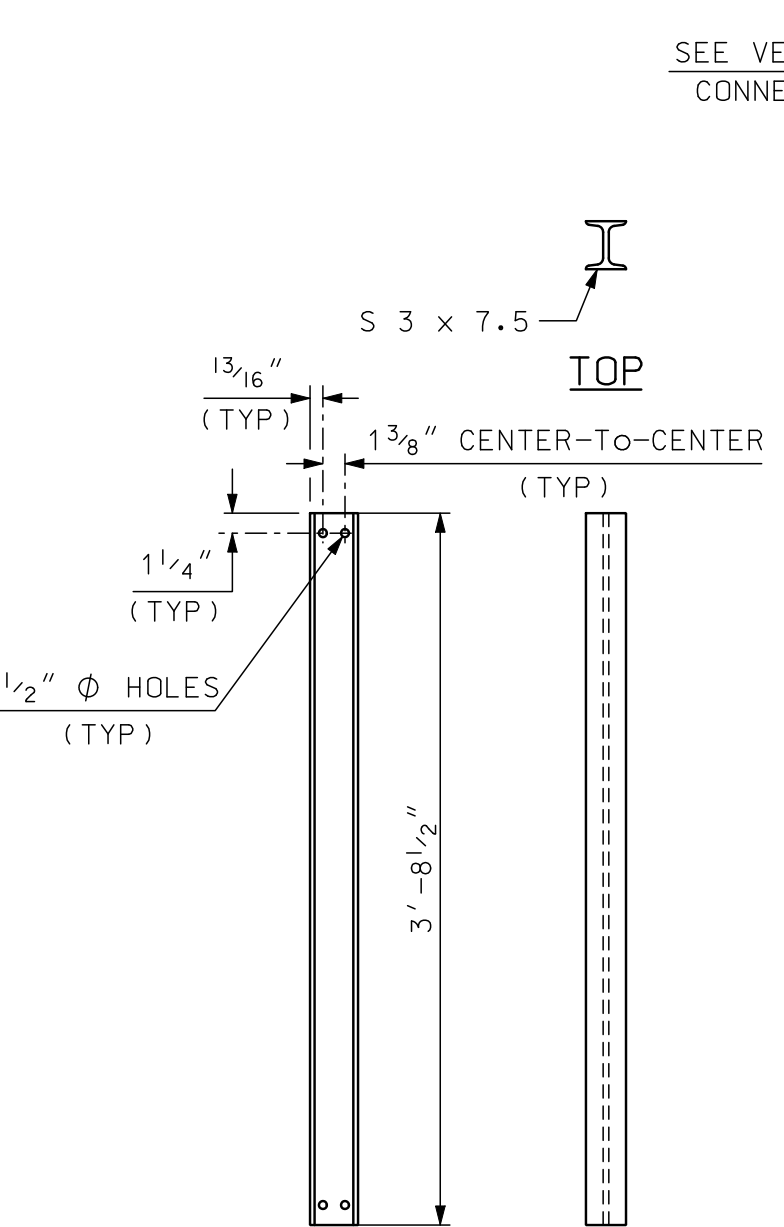
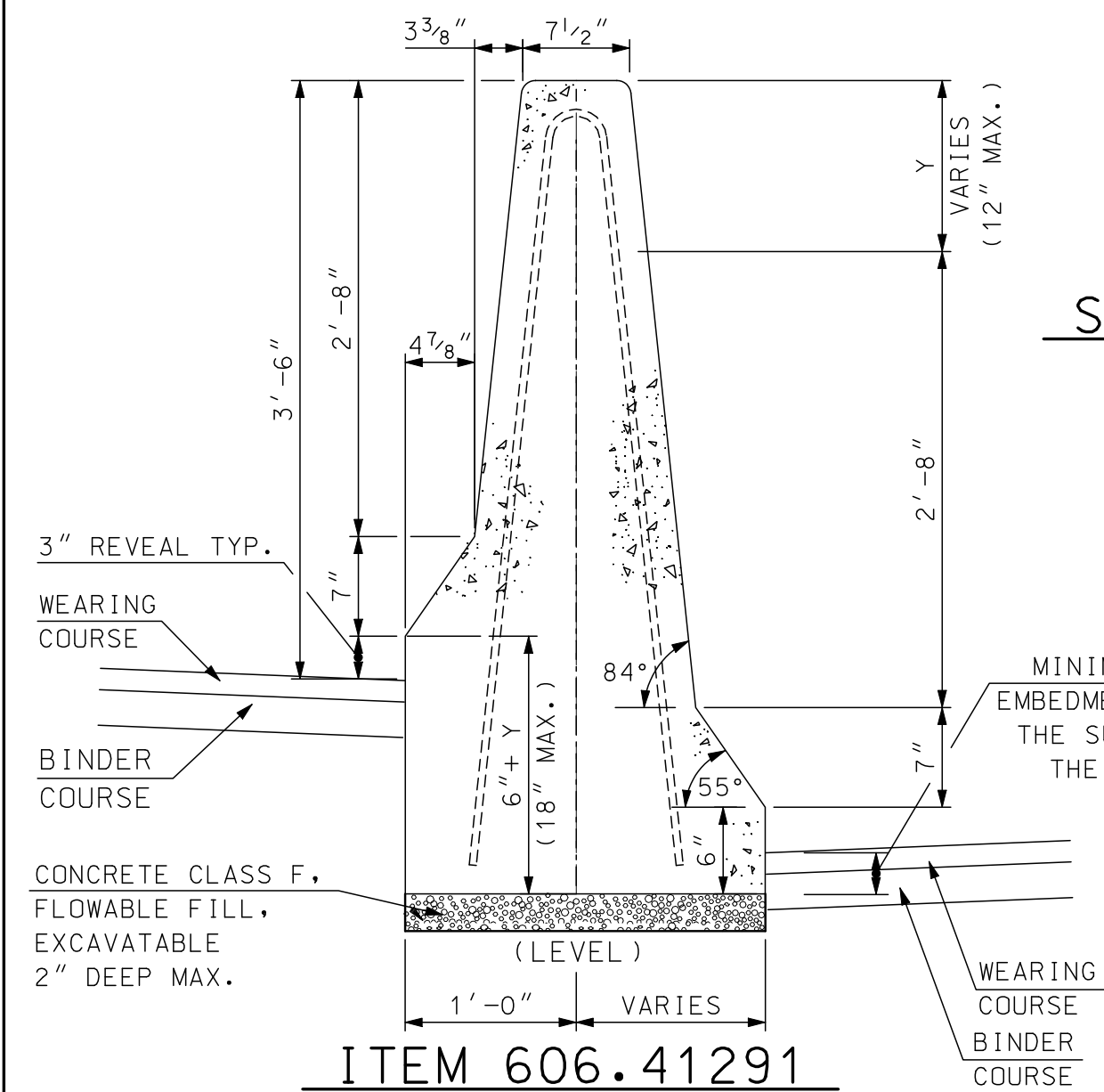
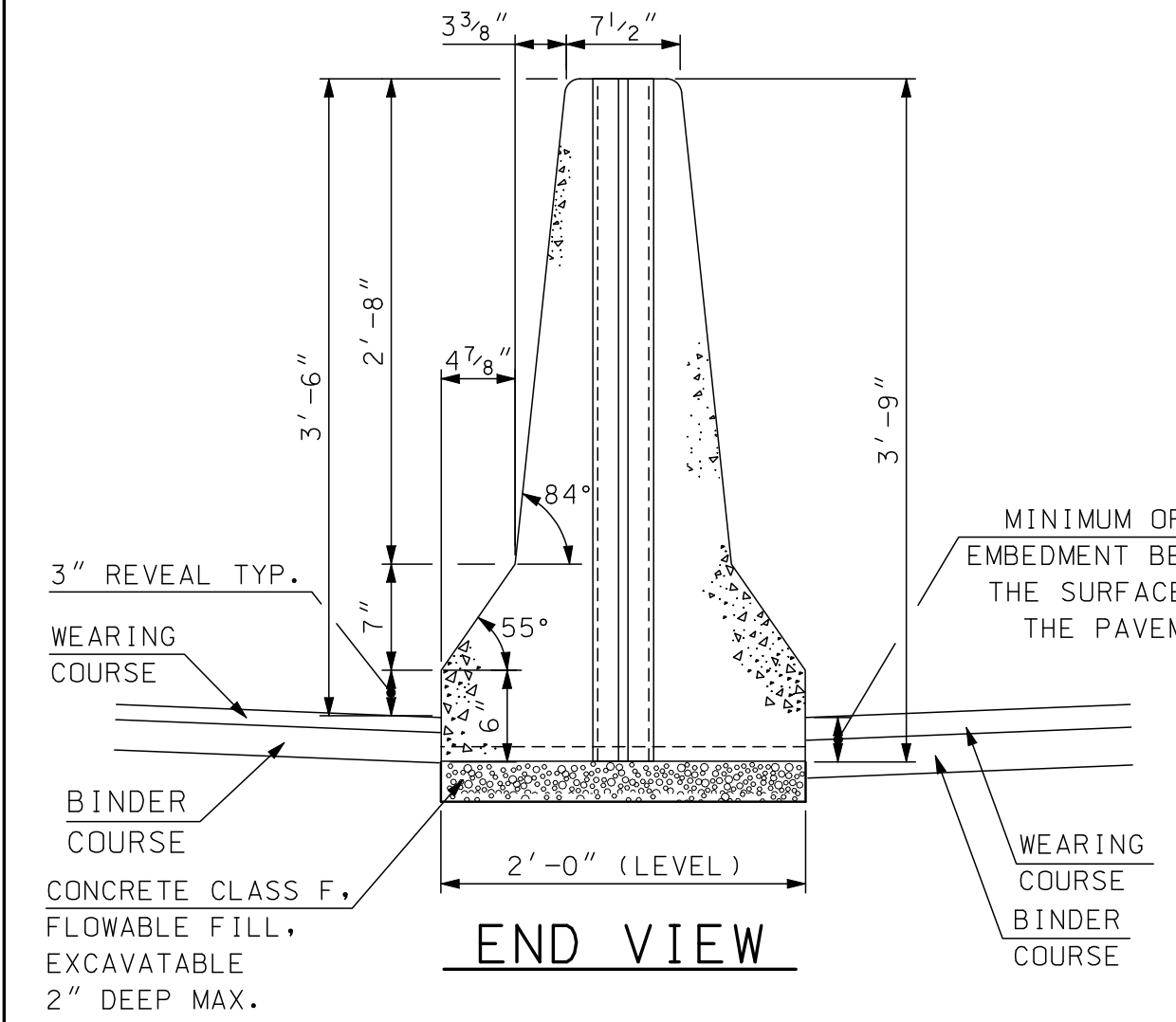


ITEM 606.41211  
TRANSITION MEDIAN  
CONCRETE BARRIER, PRECAST  
SECTION A-A

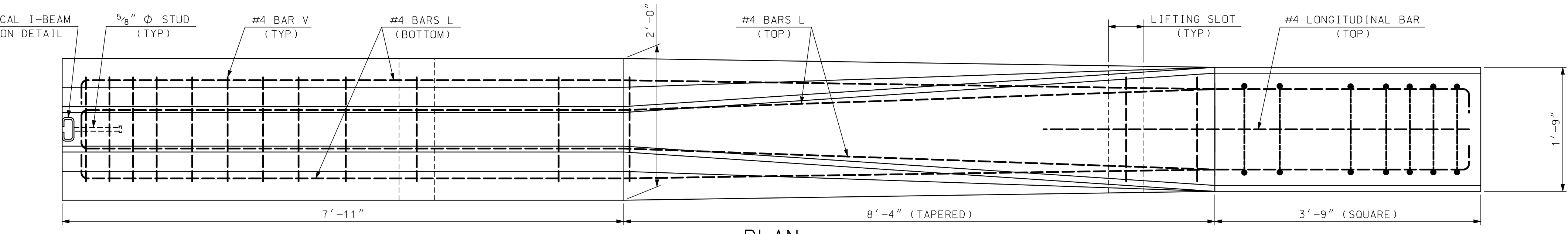


SIDE FRONT  
I-BEAM DETAILS  
SCALE: 1" = 1'-0"

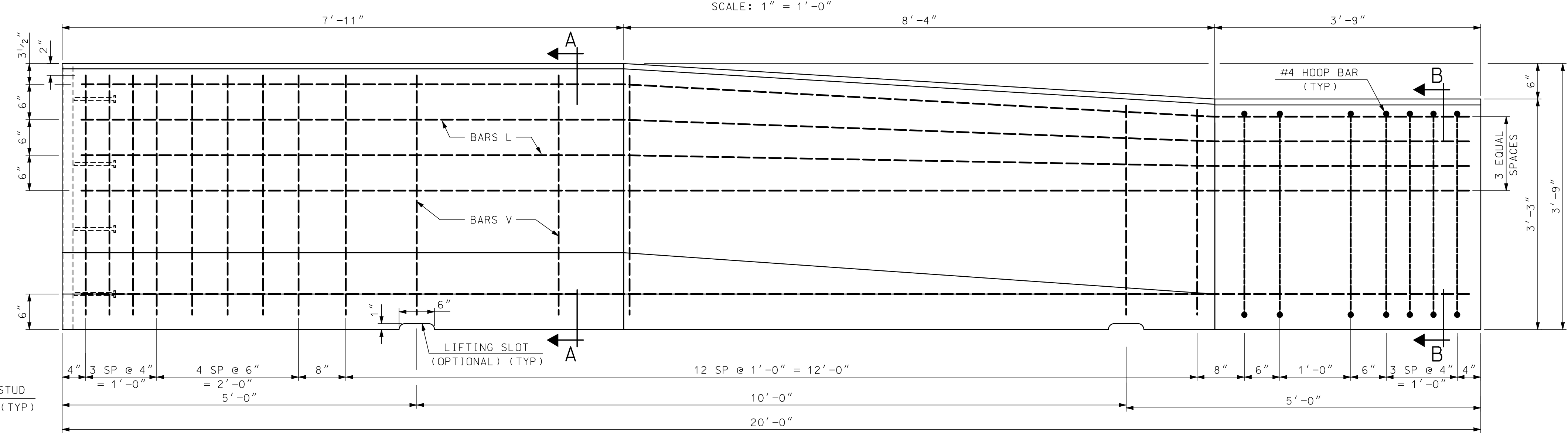


ITEM 606.41291  
TRANSITION MODIFIED  
BARRIER, PRECAST  
SECTION

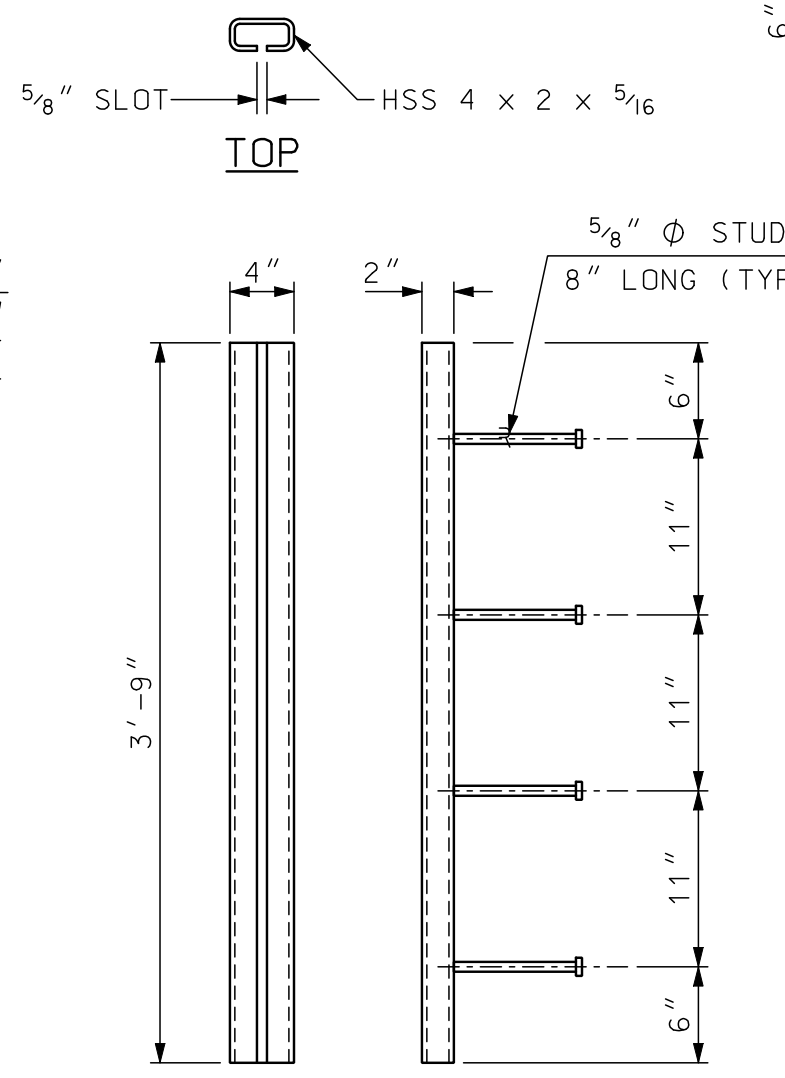
NOTE: Y = ELEVATION DIFFERENTIAL BETWEEN BARRELS AT FACE OF BARRIER



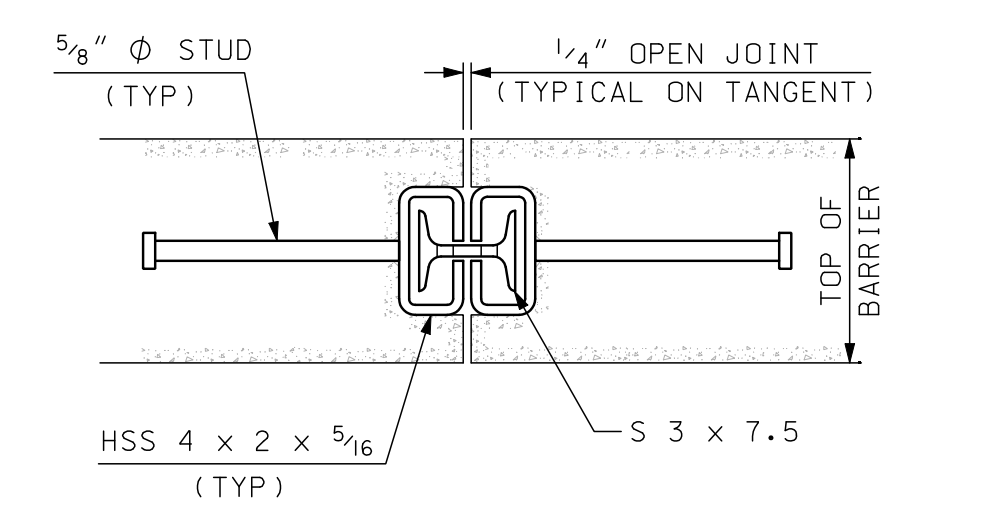
PLAN  
SCALE: 1" = 1'-0"



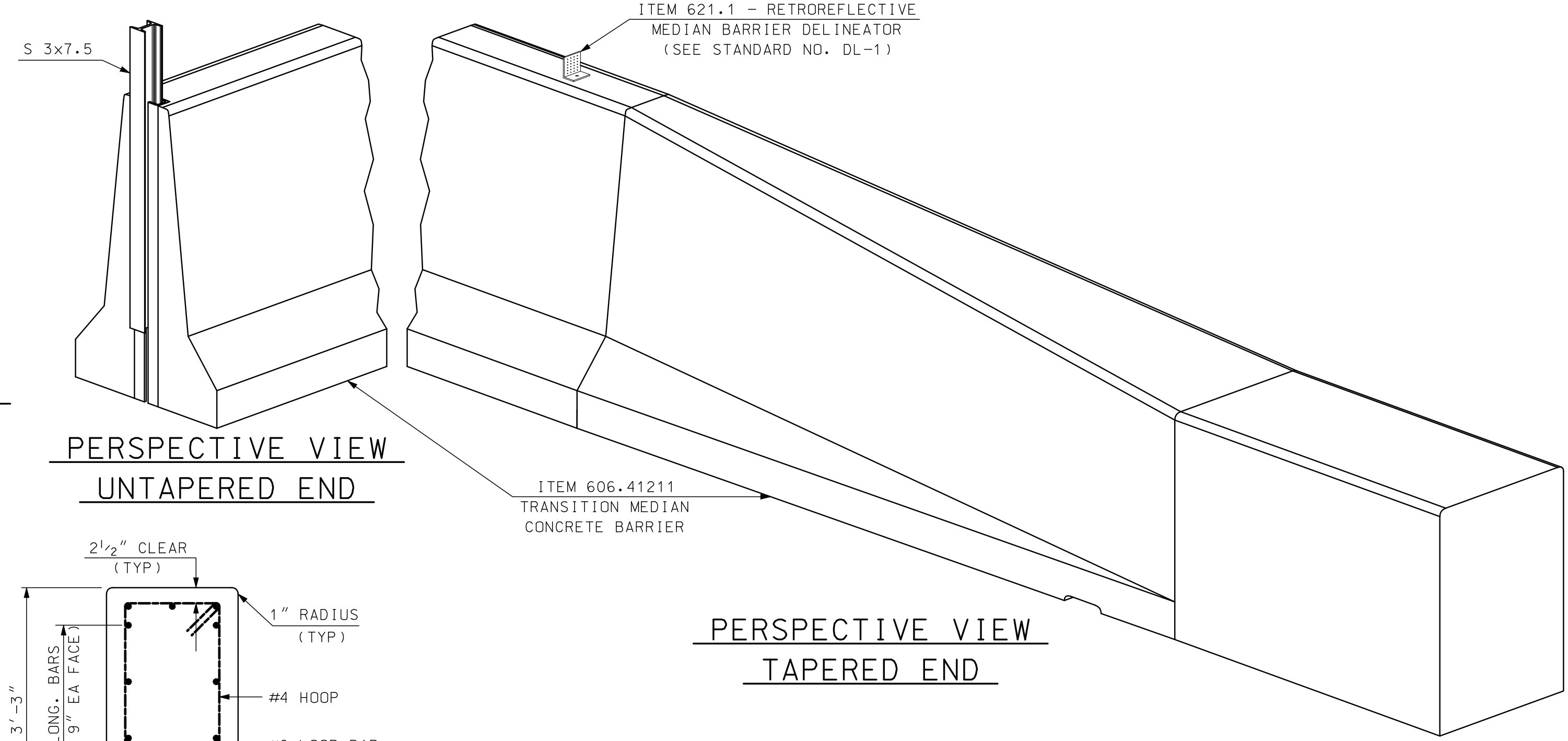
ELEVATION  
SCALE: 1" = 1'-0"



FRONT SIDE  
STRUCTURAL TUBE DETAILS  
SCALE: 1" = 1'-0"

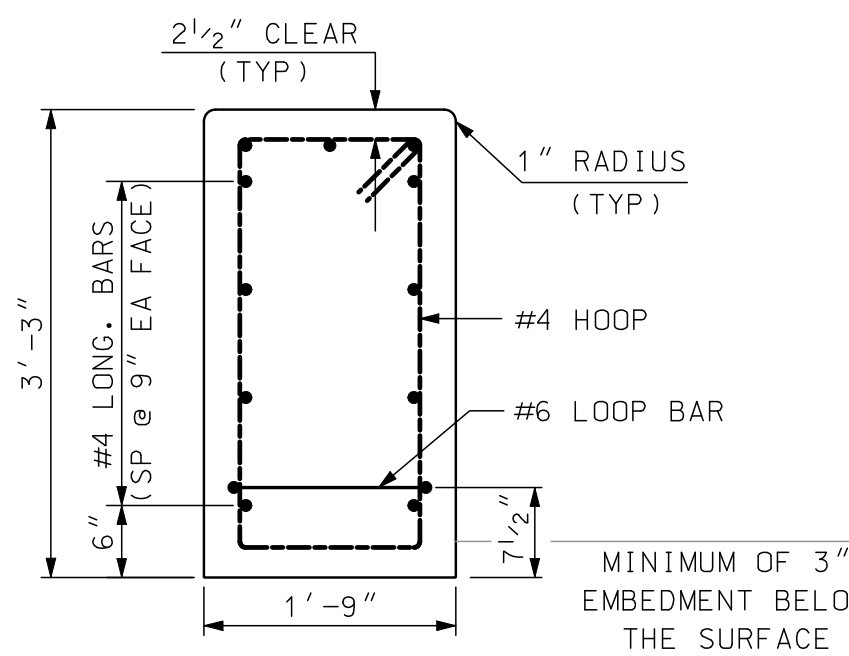


BARRIER CONNECTION DETAIL  
SCALE: 2" = 1'-0"



PERSPECTIVE VIEW  
UNTAPERED END

PERSPECTIVE VIEW  
TAPERED END



SECTION B-B  
(MASONRY &  
REINFORCEMENT)  
SCALE: 3/4" = 1'-0"

**GENERAL NOTES**

1. THE CONCRETE BARRIER DETAILS, AS SHOWN ON THIS SHEET, ARE IN COMPLIANCE WITH THE REQUIREMENTS OF NCHRP REPORT 350, TL 4.
2. I-BEAMS AND STRUCTURAL TUBES SHALL BE GALVANIZED AFTER FABRICATION.
3. STUD WELDING SHALL BE IN ACCORDANCE WITH ITEM 547.
4. SLOT IN STRUCTURAL TUBE SHALL BE CUT WITH MECHANICALLY GUIDED MEANS TO A SMOOTH, UNIFORM SURFACE MEETING A SURFACE ROUGHNESS OF 1000 MICROINCHES OR BETTER (ANSI B46.1).

**MATERIAL NOTES**

1. THE BARRIERS SHALL BE LIGHT COLORED CLASS "AA" CONCRETE HAVING A MINIMUM 28 DAY COMPRESSION STRENGTH OF 4,000 PSI. BARRIERS SHALL HAVE A SMOOTH UNIFORM SURFACE FREE OF DEFECTS AND IRREGULARITIES. CASTING DATE SHALL BE SHOWN ON BARRIER. ALL EXPOSED EDGES OF CONCRETE SHALL BE CHAMFERED 3/4", UNLESS NOTED OTHERWISE.
2. ALL REINFORCING STEEL SHALL BE AASHTO M31 (ASTM-A615) GRADE 60, EPOXY COATED. REINFORCEMENT SHOWN IS THE MINIMUM REQUIRED.
3. EACH BARRIER UNIT SHALL INCLUDE ONE S 3x7.5 AS SHOWN ON THIS PLAN SHEET.
4. SHOP DRAWINGS, SHALL INCLUDE REINFORCING SCHEDULE.

REVISION DATES	
2-4-09	ORIG.

SHEET SCALE  
AS NOTED

STATE OF NEW HAMPSHIRE  
DEPARTMENT OF TRANSPORTATION, CONCORD, N.H.

TRANSITION F-SHAPE BARRIER