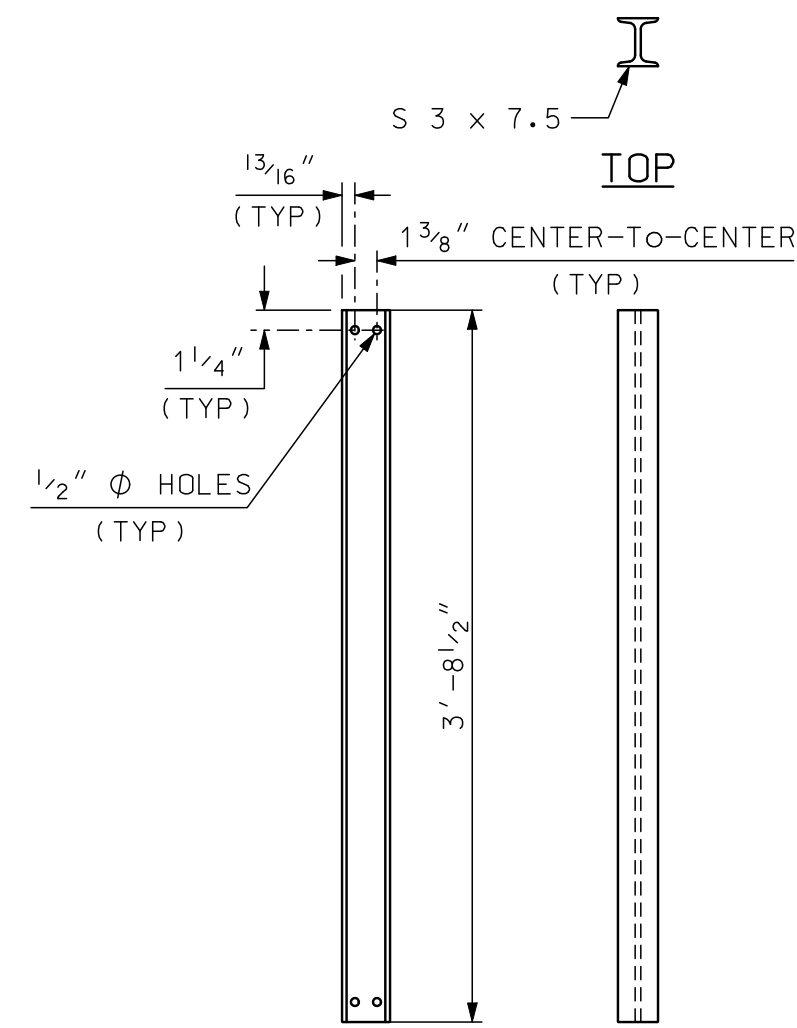
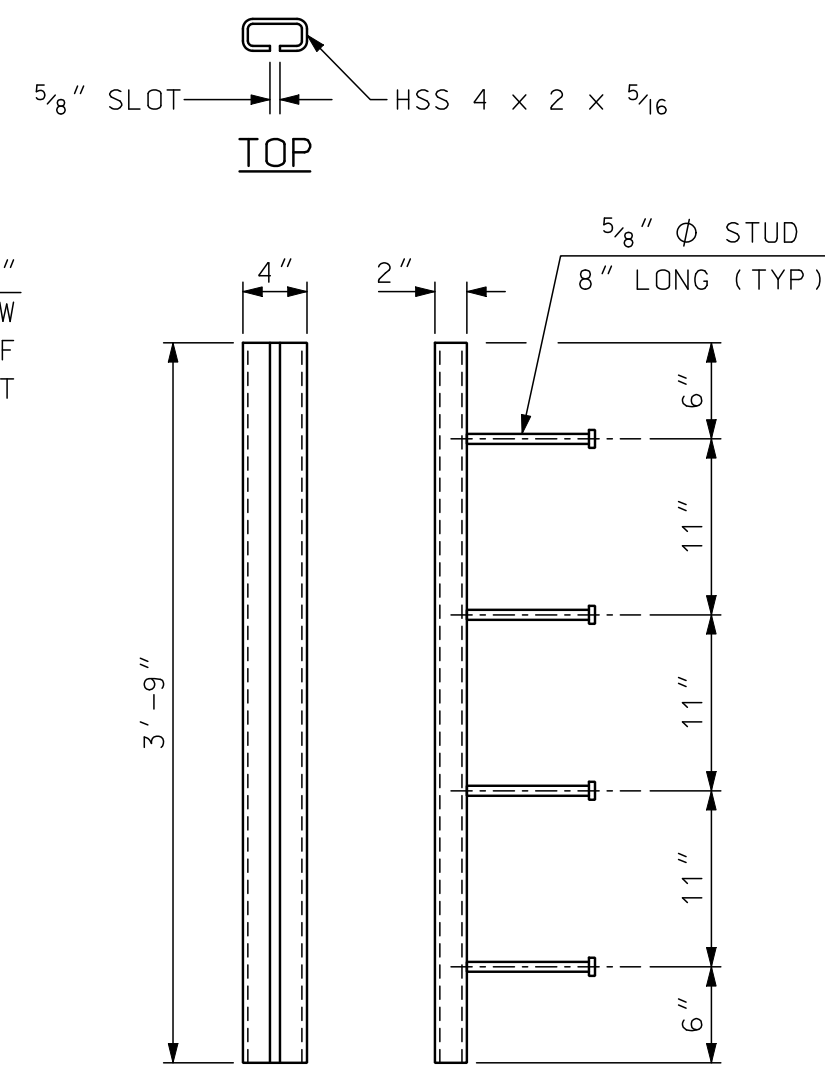


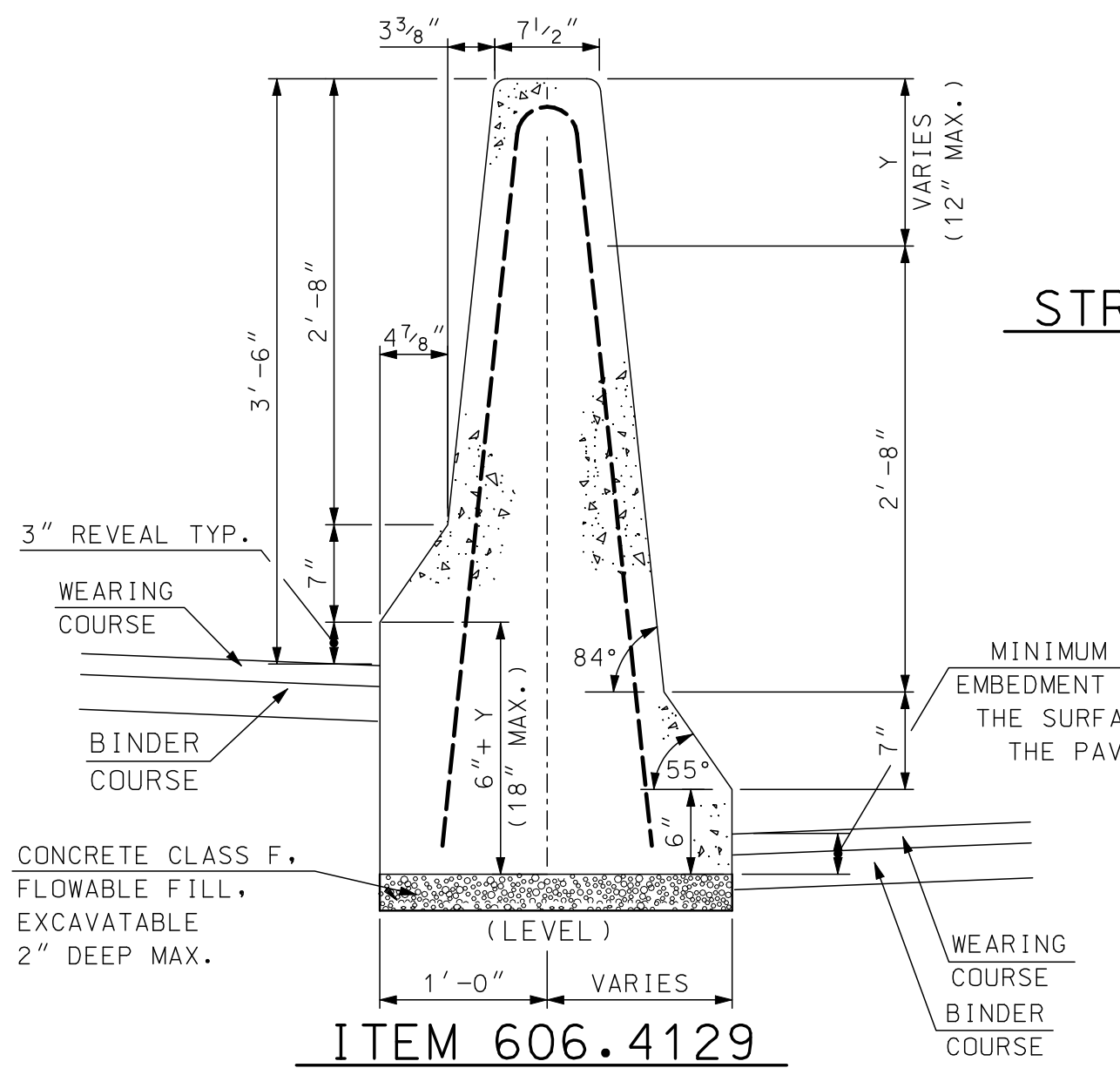
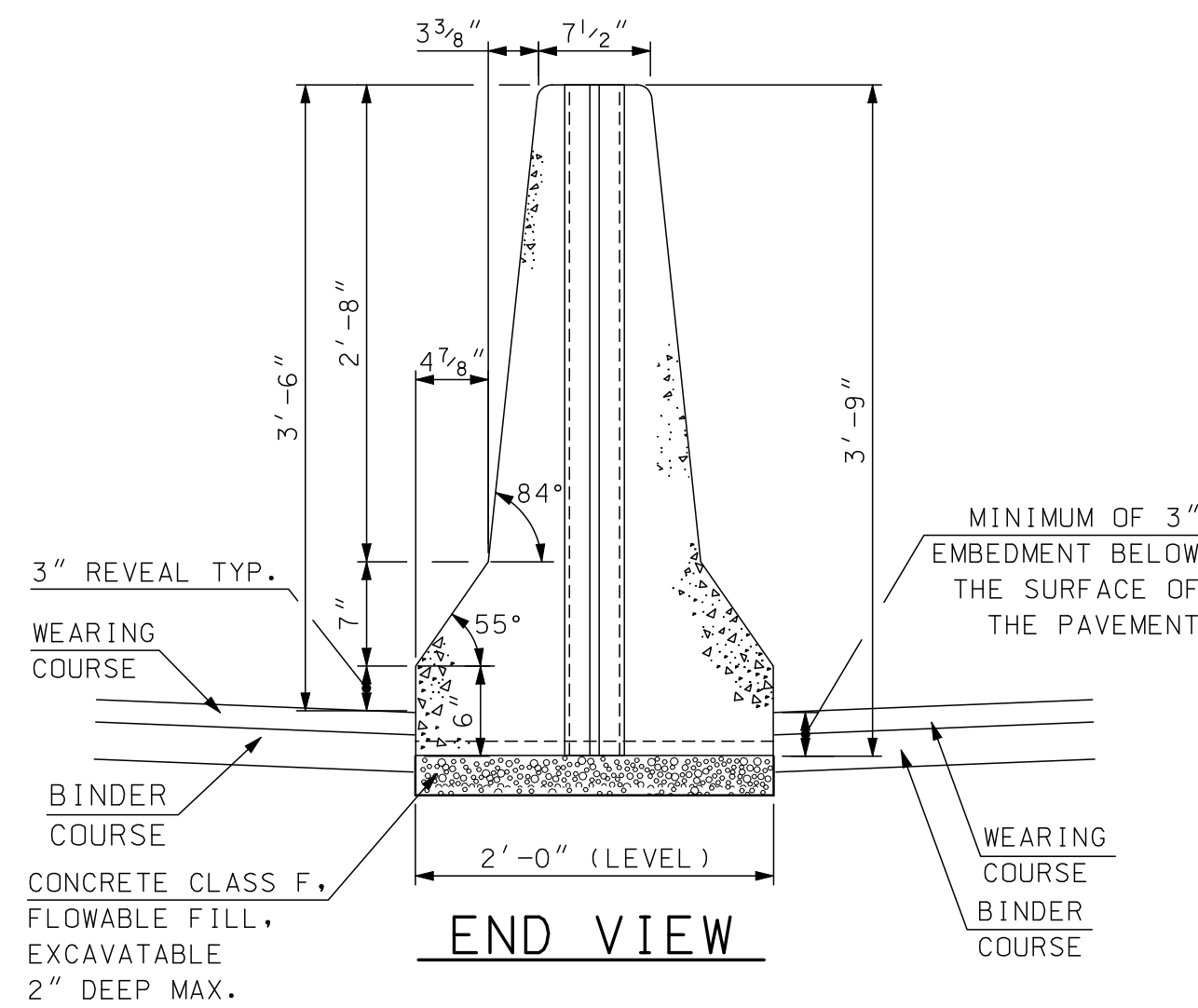
ITEM 606.412
CONCRETE BARRIER,
DOUBLE-FACED, PRECAST
SECTION A-A



SIDE FRONT
I-BEAM DETAILS
 SCALE: 1" = 1'-0"

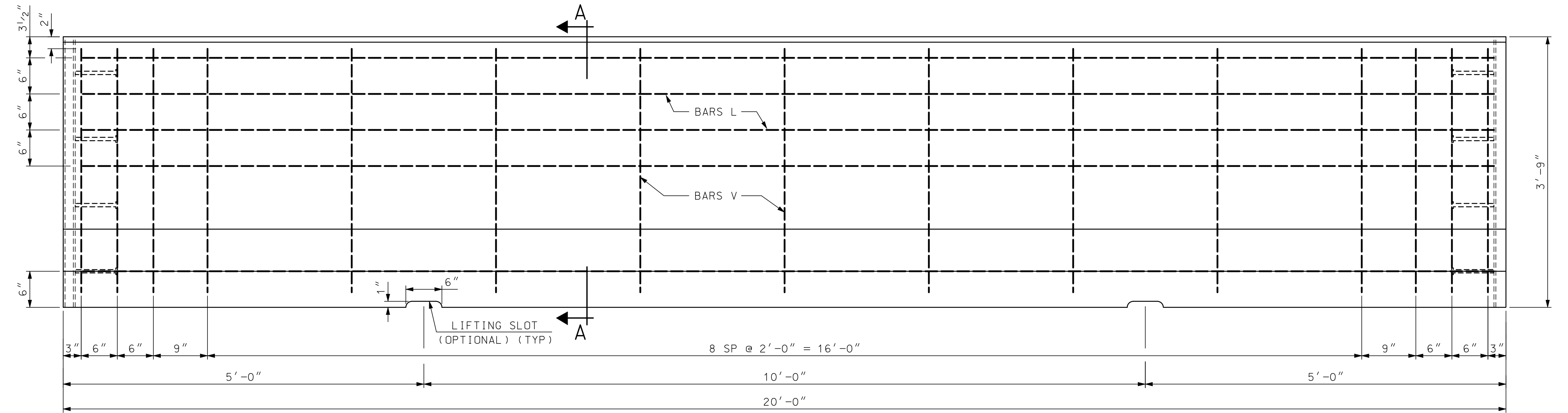


FRONT SIDE
STRUCTURAL TUBE DETAILS
 SCALE: 1" = 1'-0"

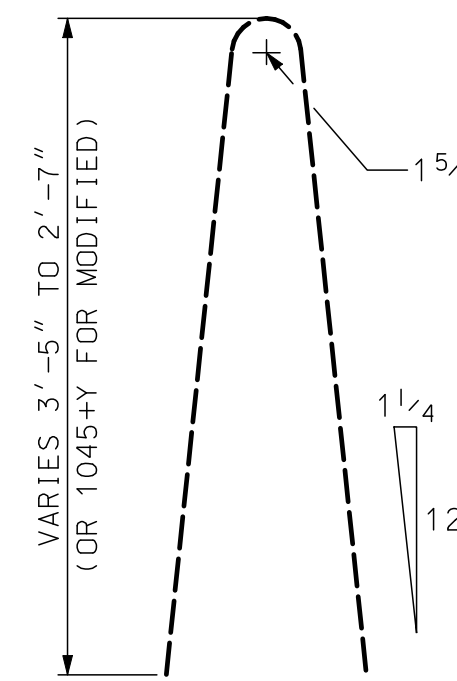


ITEM 606.4129
MODIFIED CONCRETE
MEDIAN BARRIER, PRECAST
SECTION

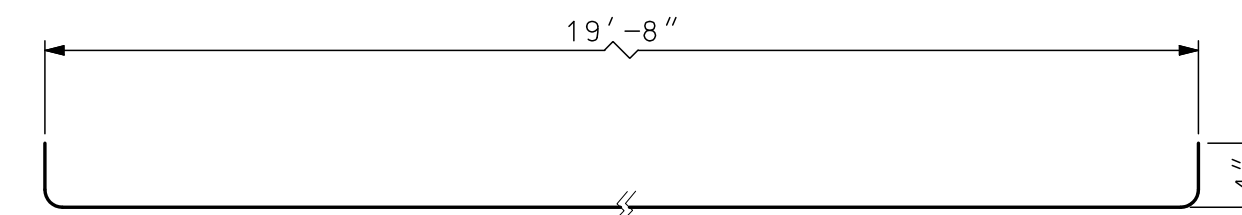
NOTE: Y = ELEVATION DIFFERENTIAL BETWEEN BARRELS AT FACE OF BARRIER



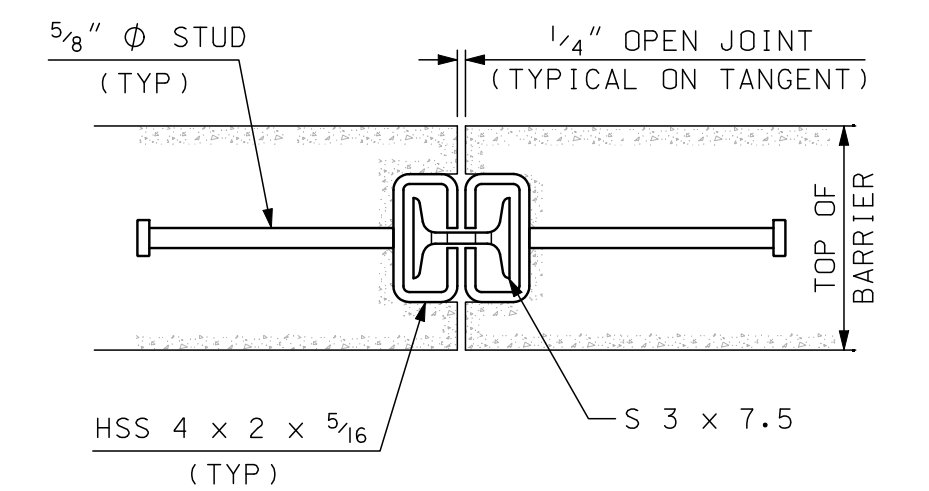
ELEVATION
 SCALE: 1" = 1'-0"



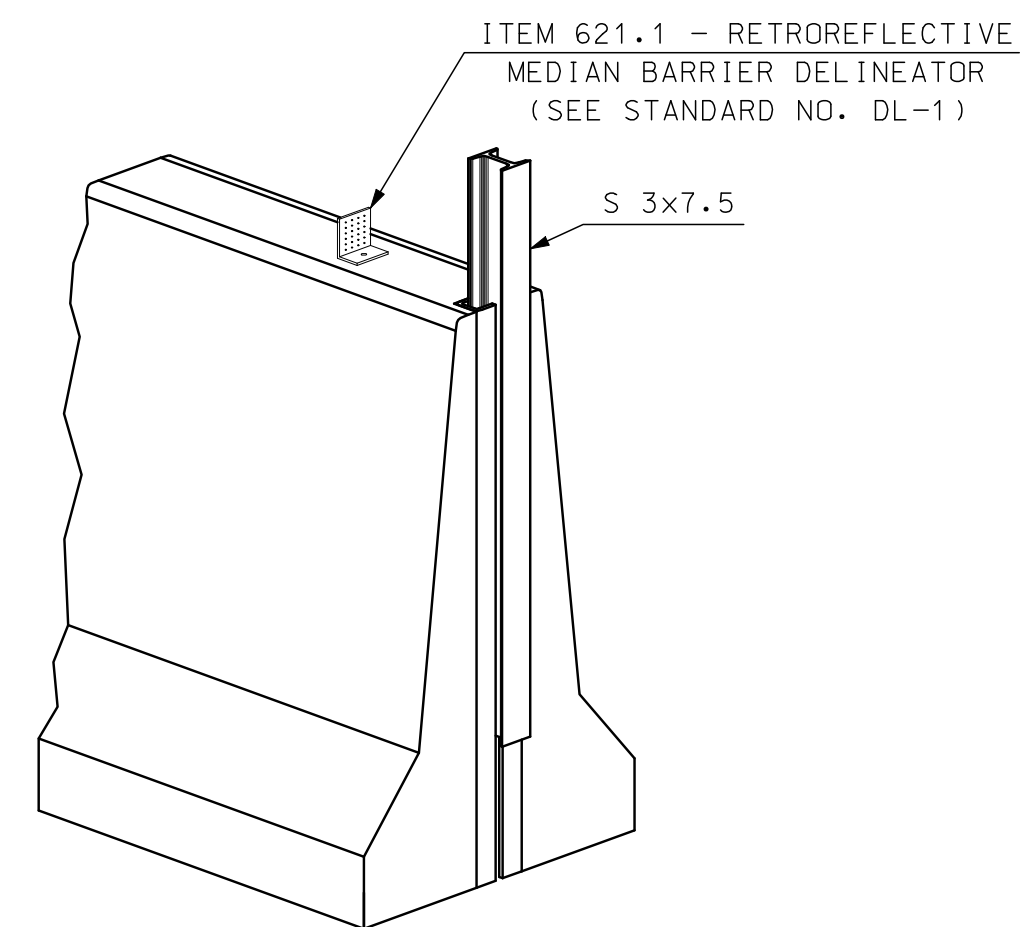
BAR V DETAIL (#4)
 SCALE: 1" = 1'-0"



BAR L DETAIL (#4)
 SCALE: 1" = 1'-0"



BARRIER CONNECTION DETAIL
 SCALE: 2" = 1'-0"



PERSPECTIVE VIEW

GENERAL NOTES

1. THE CONCRETE BARRIER DETAILS, AS SHOWN ON THIS SHEET, ARE IN COMPLIANCE WITH THE REQUIREMENTS OF NCHRP REPORT 350, TL 4.
2. I-BEAMS AND STRUCTURAL TUBES SHALL BE GALVANIZED AFTER FABRICATION.
3. STUD WELDING SHALL BE IN ACCORDANCE WITH ITEM 547.
4. SLOT IN STRUCTURAL TUBE SHALL BE CUT WITH MECHANICALLY GUIDED MEANS TO A SMOOTH, UNIFORM SURFACE MEETING A SURFACE ROUGHNESS OF 1000 MICRONS OR BETTER (ANSI B46.1).

MATERIAL NOTES

1. THE BARRIERS SHALL BE LIGHT COLORED CLASS "AA" CONCRETE HAVING A MINIMUM 28 DAY COMPRESSION STRENGTH OF 4,000 PSI. BARRIERS SHALL HAVE A SMOOTH UNIFORM SURFACE FREE OF DEFECTS AND IRREGULARITIES. CASTING DATE SHALL BE SHOWN ON BARRIER. ALL EXPOSED EDGES OF CONCRETE SHALL BE CHAMFERED 3/4", UNLESS NOTED OTHERWISE.
2. ALL REINFORCING STEEL SHALL BE AASHTO M31 (ASTM-A615) GRADE 60, EPOXY COATED. REINFORCEMENT SHOWN IS THE MINIMUM REQUIRED.
3. EACH BARRIER UNIT SHALL INCLUDE ONE S 3x7.5 AS SHOWN ON THIS PLAN SHEET.
4. SHOP DRAWINGS, SHALL INCLUDE REINFORCING SCHEDULE.

STATE OF NEW HAMPSHIRE
 DEPARTMENT OF TRANSPORTATION, CONCORD, N.H.

PRECAST CONCRETE BARRIER
42" F-SHAPE (DOUBLE-FACED)

REVISION DATES
2-4-09 ORIG.

SHEET SCALE
 AS NOTED