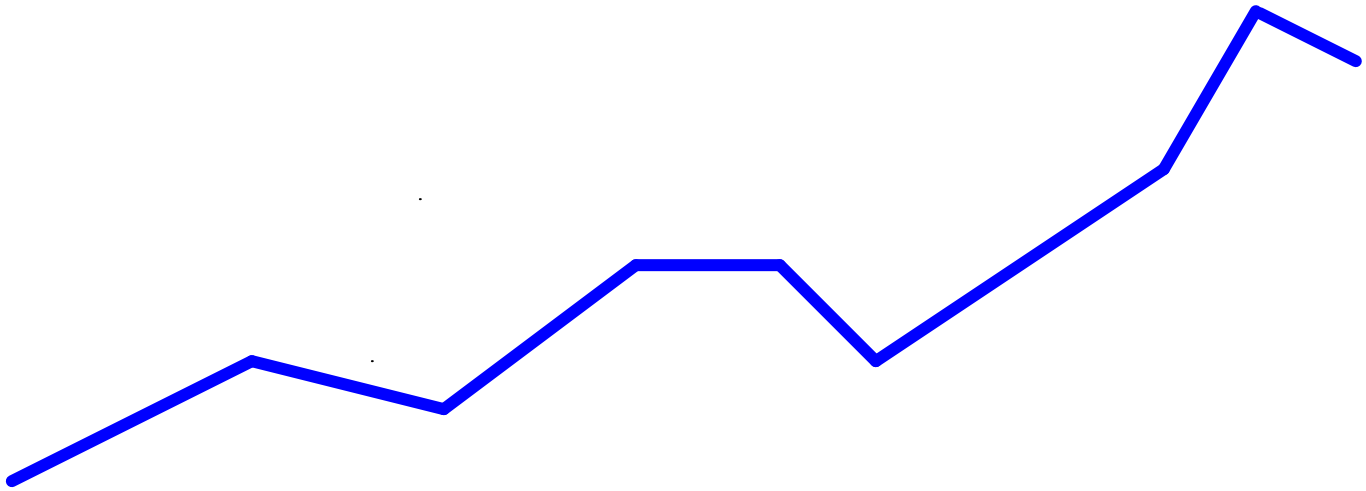


Construction Cost Index

New Hampshire Department of Transportation

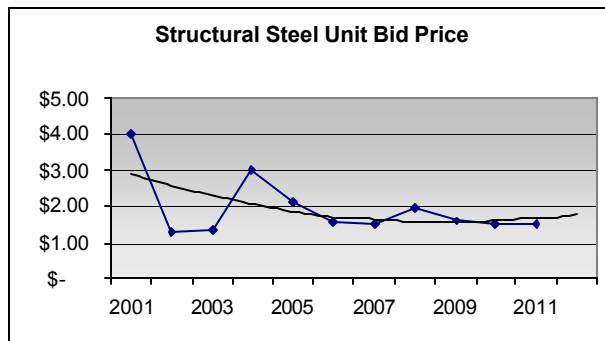
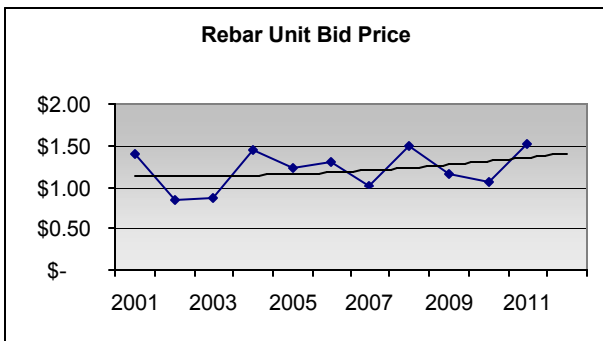
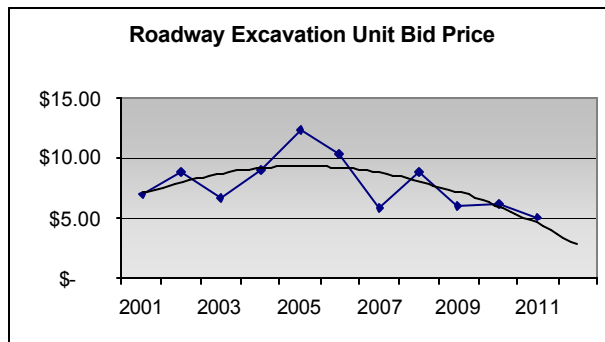
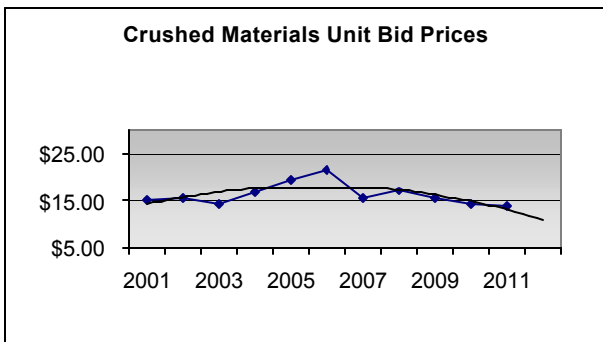
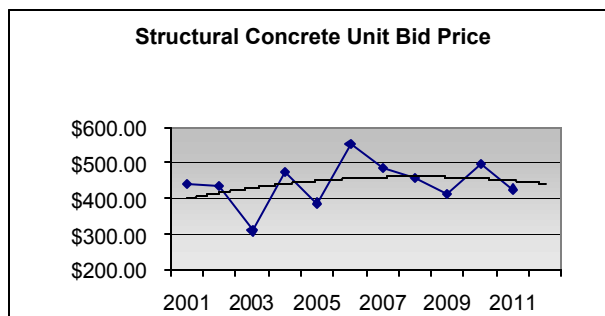
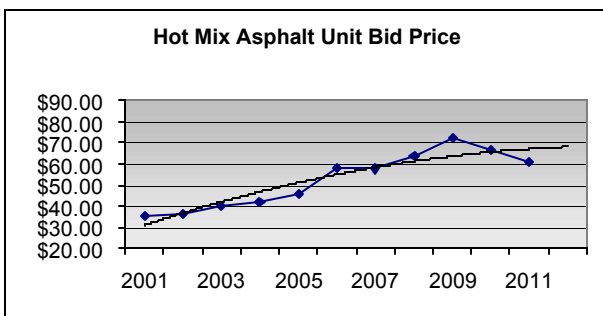
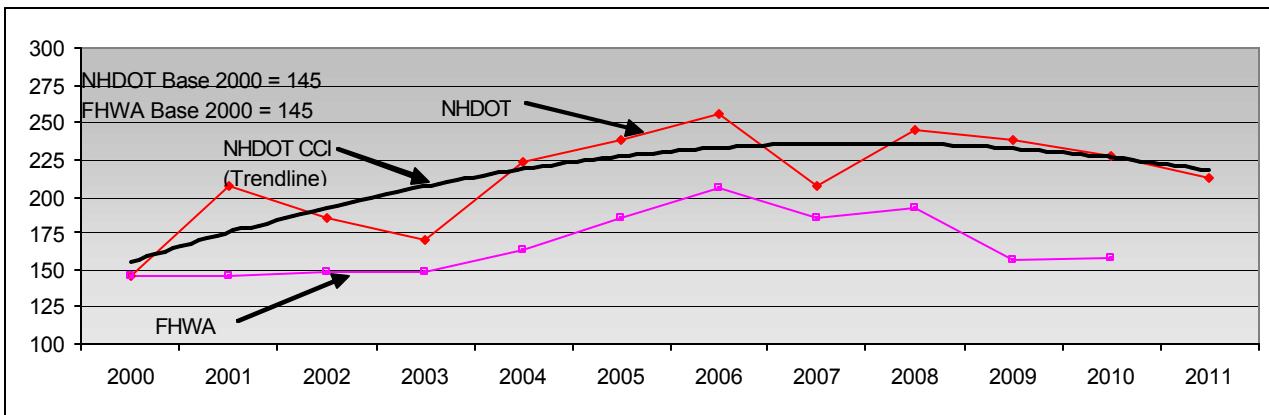


New Hampshire DOT Bureau of Construction
2nd Quarter, 2011



Construction Cost Indices for the 1st Half of 2011

NHDOT Base 2000 = 145; FHWA Base 2000 = 145

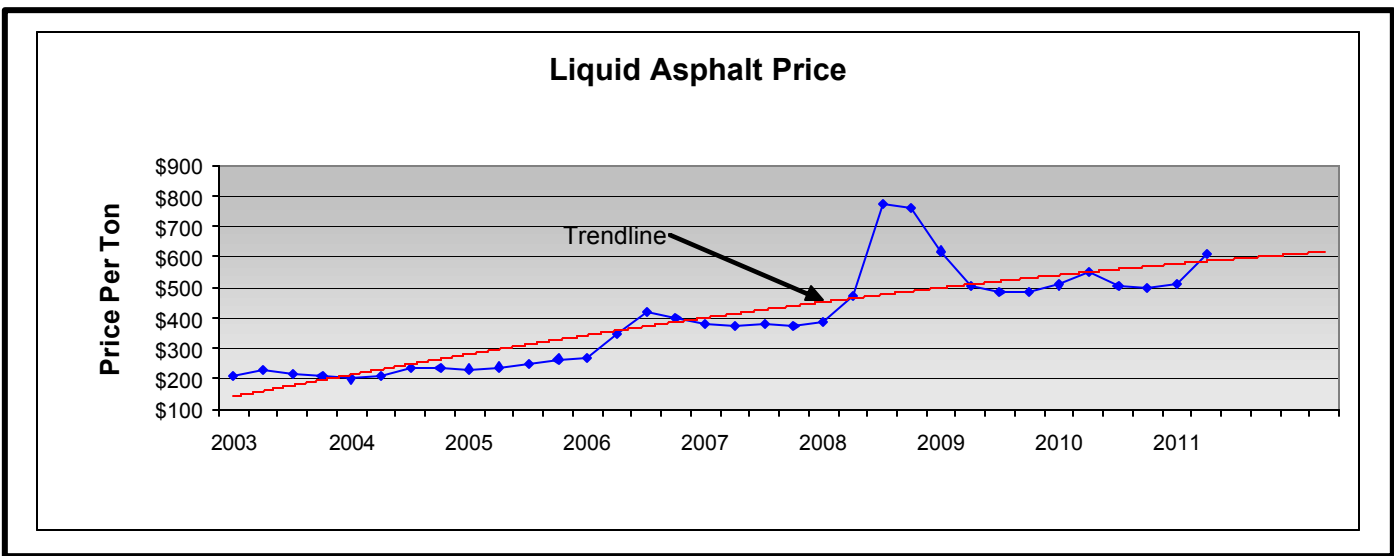
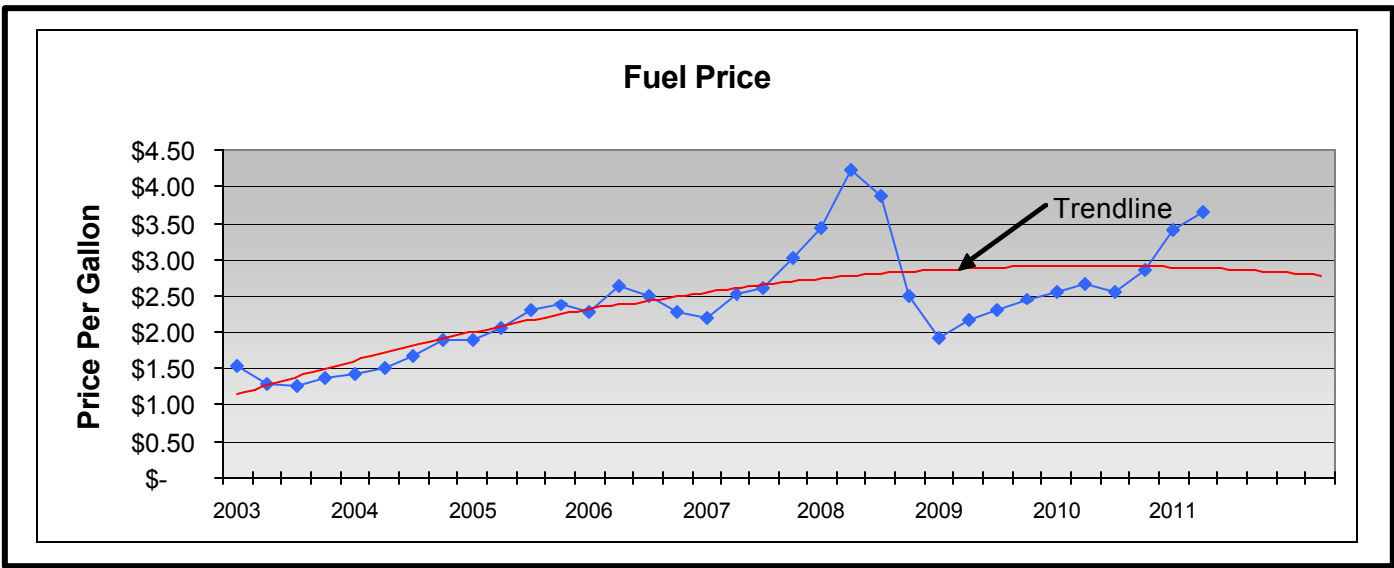


The first half of 2011 had the index showing a 3 year downward trend to 213, this represents an overall decrease since 2008 (245) of 13%. Since 2009 the average price of fuel has increased 91% to \$3.66, liquid asphalt remained between \$500-\$600/ton, and HMA is down 16.5% to \$60.57. The cost of Crushed Material and Structural Steel remained flat at \$13.75/ton and \$1.50/lb respectively. Three of the remaining four categories were down with the exception of ReBar which was up 41.8%.

The following Components (weighted as shown) are used to compute the NHDOT CCI:

Hot Mix Asphalt	42%
Crushed Material	16%
Roadway Excavation	14%
Steel	13%
Concrete	11%
ReBar	4%

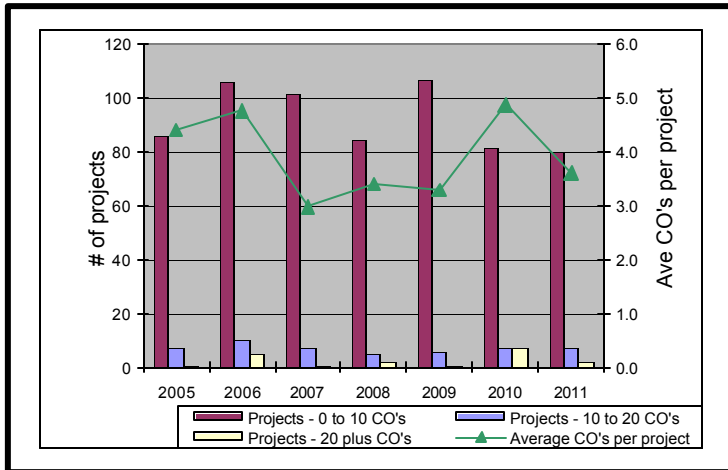
NHDOT Fuel & Liquid Asphalt Prices



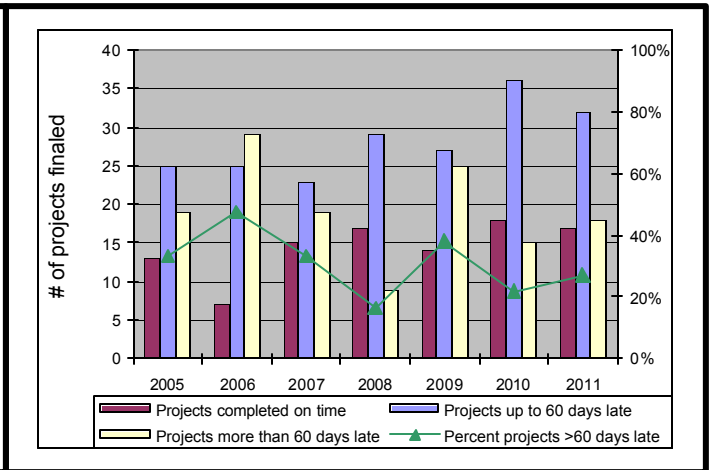
Construction Bureau Performance Measures

Compiled by State Fiscal Year

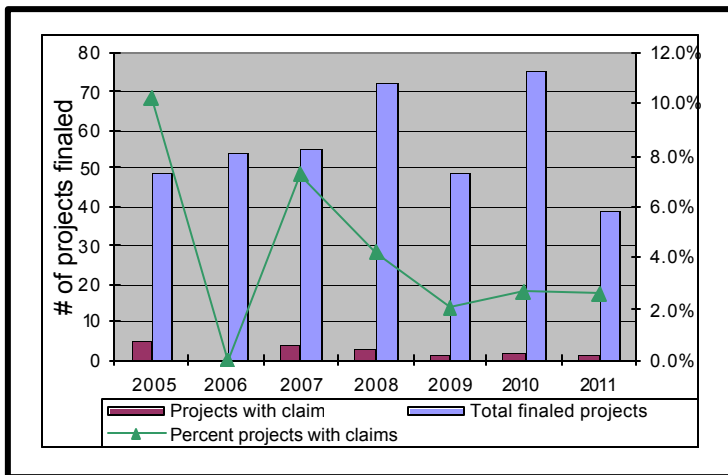
CHANGE ORDERS



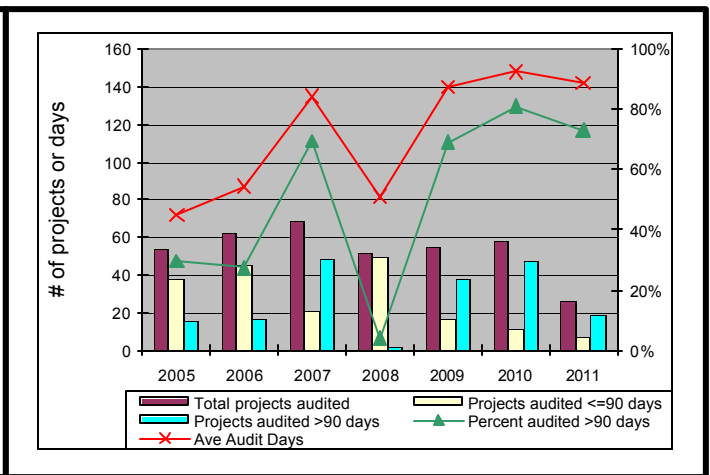
CONTRACT DURATION



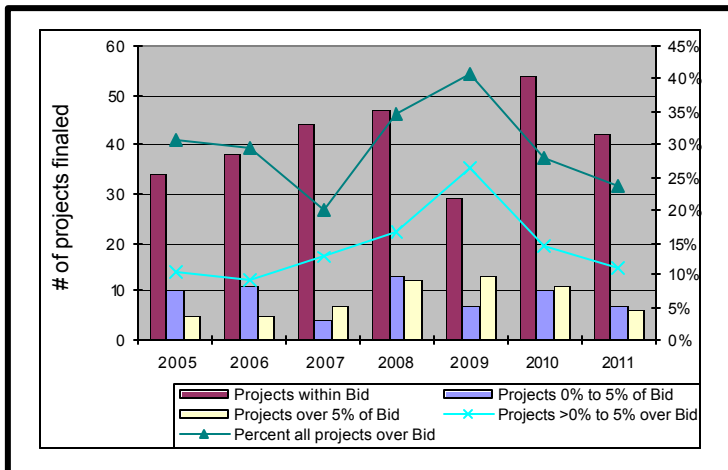
CONTRACTOR CLAIMS



PROJECT AUDIT



BIDS vs. FINAL AMOUNTS



PROJECT ACTIVITY

