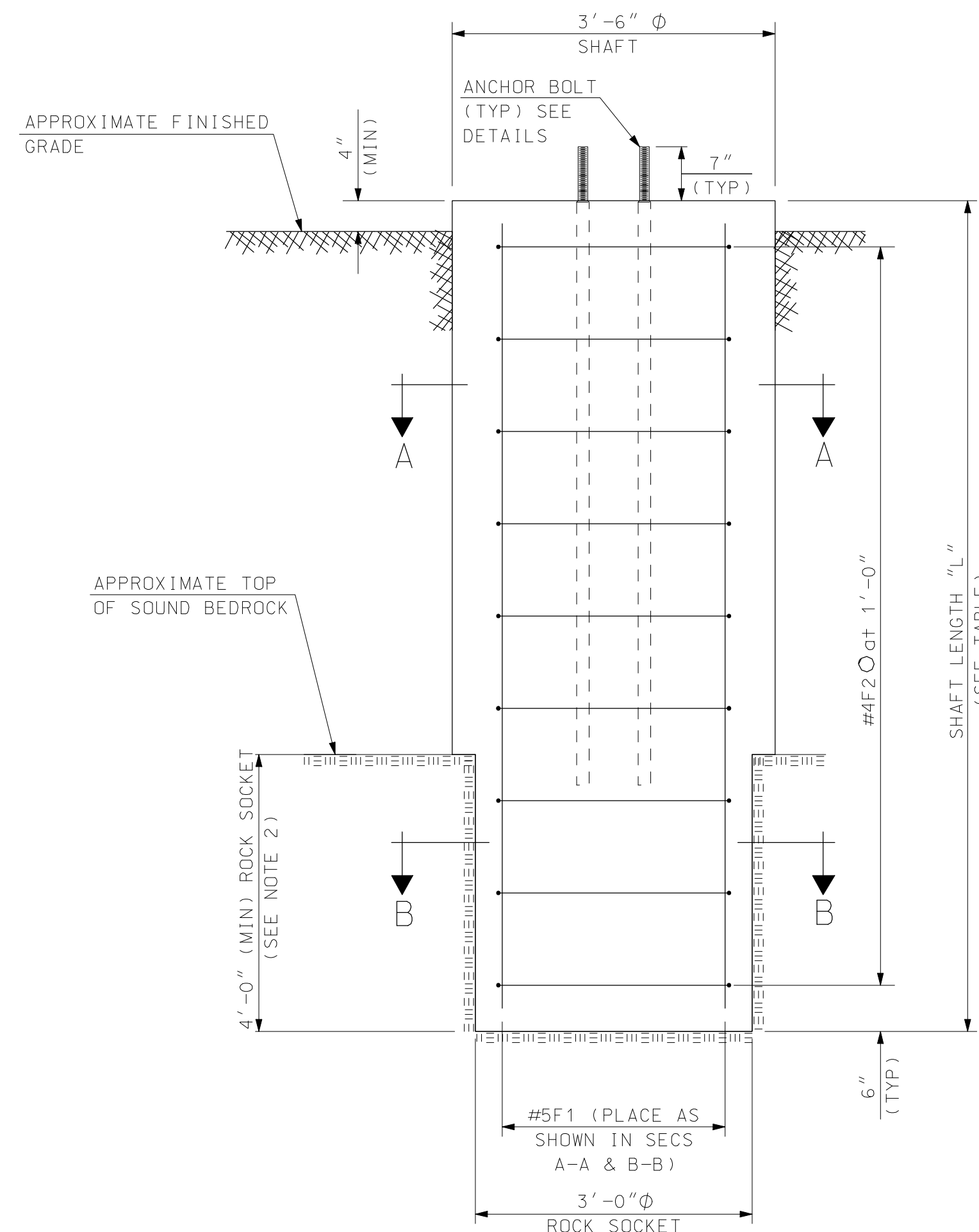
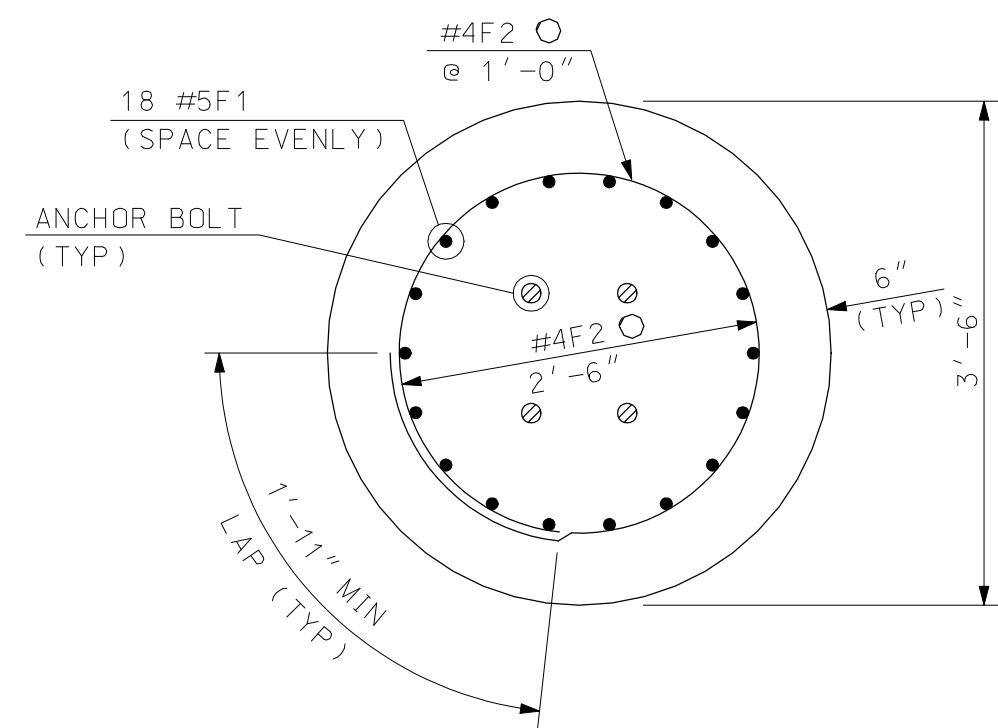


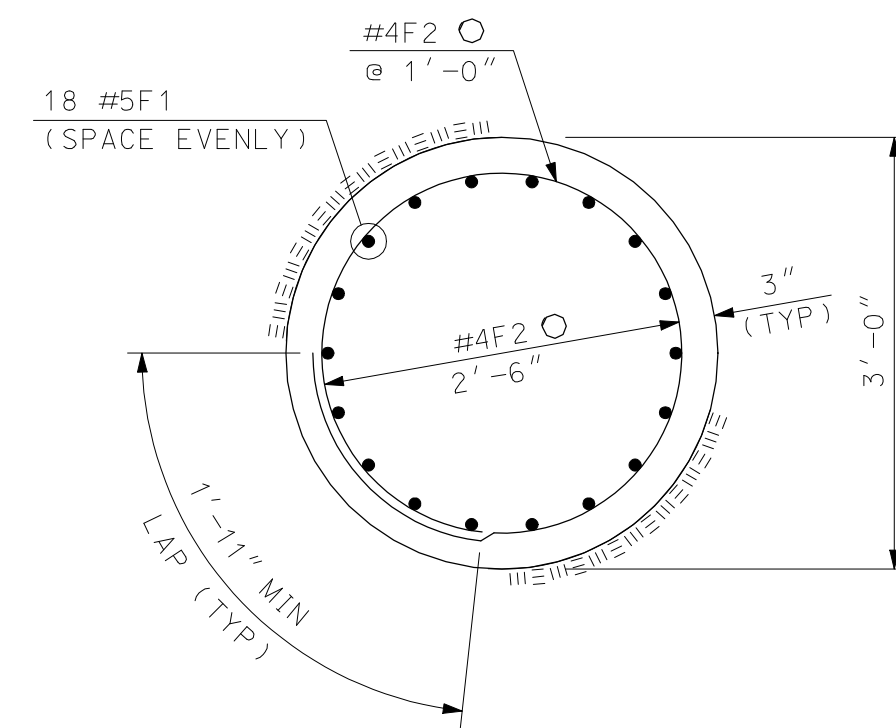
ELEVATION - DRILLED SHAFT IN SOIL
SCALE: 3/4" = 1'-0"



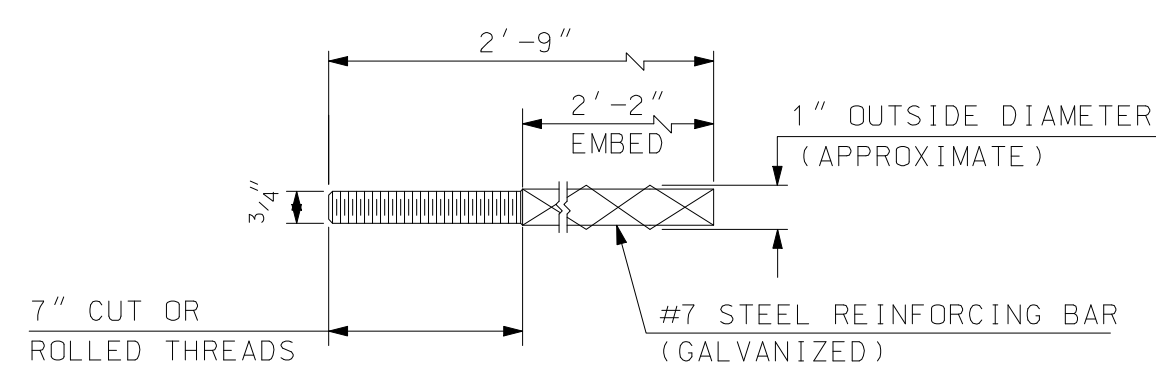
ELEVATION - DRILLED SHAFT IN ROCK
SCALE: 3/4" = 1'-0"



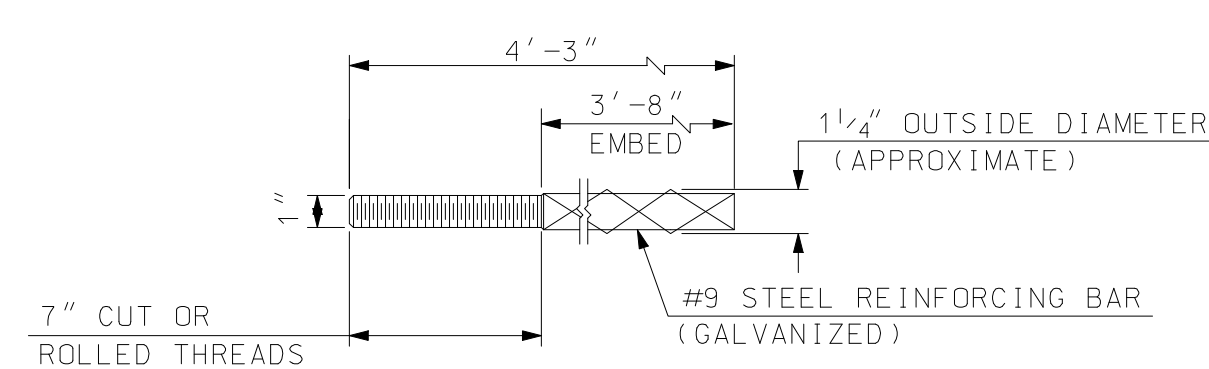
SECTION A-A
(IN SOIL)
SCALE: 3/4" = 1'-0"



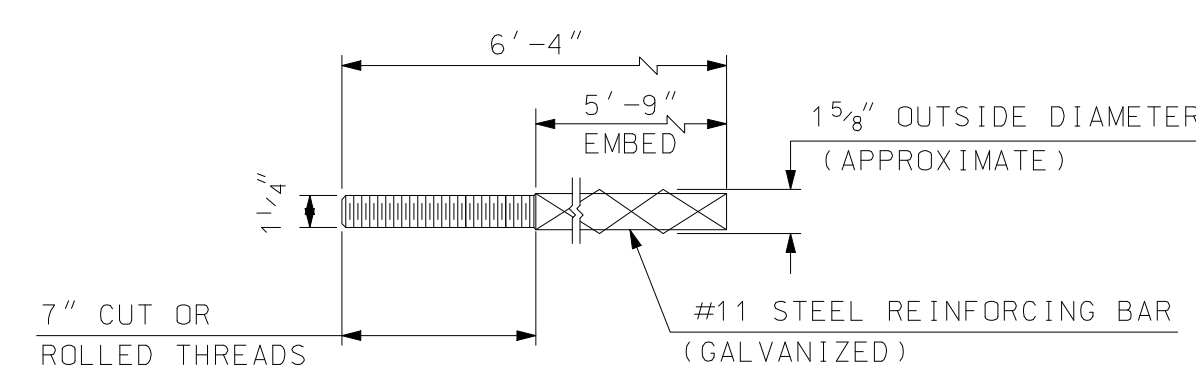
SECTION B-B
(IN ROCK)
SCALE: 3/4" = 1'-0"



ANCHOR BOLT DETAIL
for WALL HEIGHT UP TO 10'
NOT TO SCALE



ANCHOR BOLT DETAIL
for WALL HEIGHT >10' to 15'
NOT TO SCALE



ANCHOR BOLT DETAIL
for WALL HEIGHT >15' to 25'
NOT TO SCALE

SUMMARY OF SOUNDWALL QUANTITIES

ITEM NO.	ITEM DESCRIPTION	SOUNDWALL LOCATION & QUANTITY			UNIT
		WALL 1	WALL 2	WALL 3	
509.1	MOBILIZATION AND DEMOBILIZATION OF DRILLED SHAFT DRILLING EQUIPMENT				UNIT
509.2	DRILLED SHAFTS				LF
509.3	OBSTRUCTION REMOVAL				LF
509.4	ROCK SOCKET EXCAVATION				LF
594.2	WOOD PANEL SOUND ABATEMENT WALL				SF

SHAFT LENGTH SUMMARY TABLES

(FOR POST/SHAFT NUMBERS SEE PLAN SHEETS INCLUDED ELSEWHERE IN THIS CONTRACT)

WALL 1

POST/SHAFTS NUMBERS	SHAFT LENGTH L	NUMBER OF POSTS/SHAFTS

WALL 2

POST/SHAFTS NUMBERS	SHAFT LENGTH L	NUMBER OF POSTS/SHAFTS

WALL 3

POST/SHAFTS NUMBERS	SHAFT LENGTH L	NUMBER OF POSTS/SHAFTS

ESTIMATED SHAFT QUANTITIES

(PER INSTALLED FOOT OF 3'-6" SHAFT)

ITEM	UNIT	QUANTITY
CONCRETE CLASS A	CY/LF	0.36
REINFORCING STEEL	LB/LF	25.34

FOR INFORMATION ONLY. COST INCLUDED IN ITEM 509.2.

SHAFT REINFORCING SCHEDULE

BAR MARK	SIZE	UNBENT LENGTH	TYPE
F1	#5	L-6"	—
F2	#4	9'-10"	○

DRILLED SHAFT NOTES

- DRILLED SHAFT CONSTRUCTION METHODS, CONCRETE AND REINFORCING REQUIREMENTS SHALL BE IN ACCORDANCE WITH THE SECTION 509 SPECIAL PROVISION.
- WHERE BEDROCK IS ENCOUNTERED WITHIN THE SPECIFIED SHAFT LENGTH, THE SHAFT SHALL EXTEND A MINIMUM OF 4 FEET INTO SOUND BEDROCK WITH AN OVERALL MINIMUM SHAFT LENGTH OF 5 FEET. IT IS NOT NECESSARY TO EXTEND THE SHAFT IN BEDROCK BEYOND THE SPECIFIED SOIL BASED LENGTHS GIVEN ON THE PLANS.
- WHERE FILL EMBANKMENT IS TO BE CONSTRUCTED ABOVE THE EXISTING GROUND, THE EMBANKMENT SHALL BE BUILT PRIOR TO CONSTRUCTING THE SHAFTS. PLACEMENT AND COMPACTION OF THE FILL SHALL BE IN ACCORDANCE WITH SECTION 203.
- CONCRETE FOR THE DRILLED SHAFTS SHALL HAVE A MINIMUM 28 DAY COMPRESSIVE STRENGTH OF 3,000 PSI CLASS A CONCRETE AND SHALL CONFORM TO SECTION 520 UNLESS NOTED OTHERWISE.
- ALL REINFORCING STEEL SHALL CONFORM TO AASHTO M 31, GRADE 60. ALL REINFORCING STEEL SHALL BE A MINIMUM OF 3" CLEAR FROM CONCRETE SURFACES UNLESS NOTED OTHERWISE.
- FOR ANCHOR BOLT NOTES, SEE SOUNDWALL SHEET 2 OF 3.

NOTE TO DESIGNER:

- REINFORCING LAYOUT SHOWN IN SECTION A-A AND B-B IS BASED ON A WALL HEIGHT OF 25 FT. MAXIMUM.

STATE OF NEW HAMPSHIRE									
DEPARTMENT OF TRANSPORTATION * BUREAU OF BRIDGE DESIGN									
TOWN	BRIDGE NO.			STATE PROJECT					
LOCATION									
WOOD PANEL SOUNDWALL (3 of 3)									BRIDGE SHEET
REVISIONS AFTER PROPOSAL									OF
DESIGNED	NHDOT	DATE	CHECKED	NHDOT	DATE	FILE NUMBER	TOTAL SHEETS		
	RAJ	9/05		ACJ/ABH	9/05				
ISSUE DATE	XX	FEDERAL PROJECT NO.	SHEET NO.		TOTAL SHEETS				

SUBDIRECTORY	DGN LOCATOR	SHEET SCALE
English/SNDWALL	SOUND3	AS NOTED