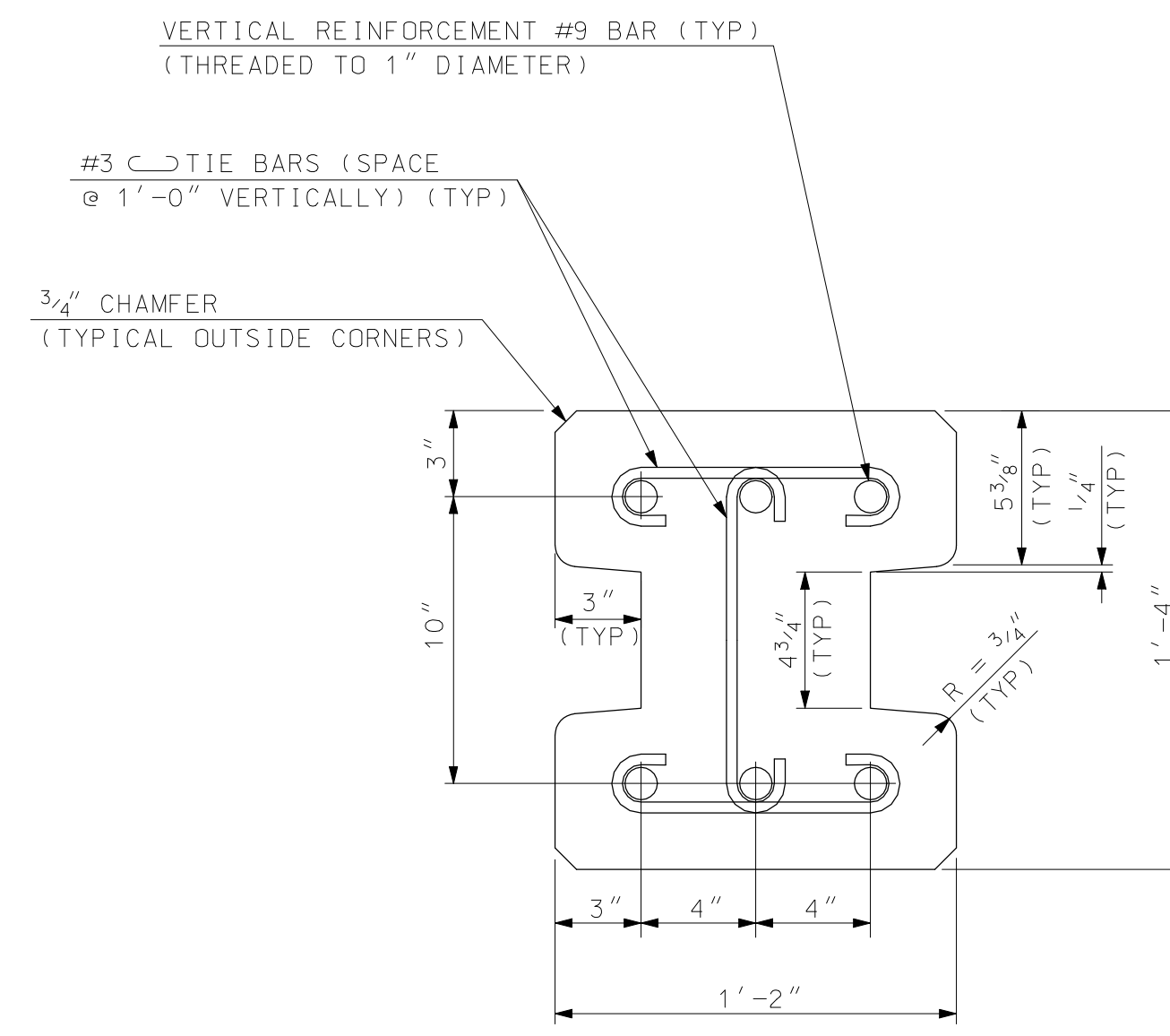
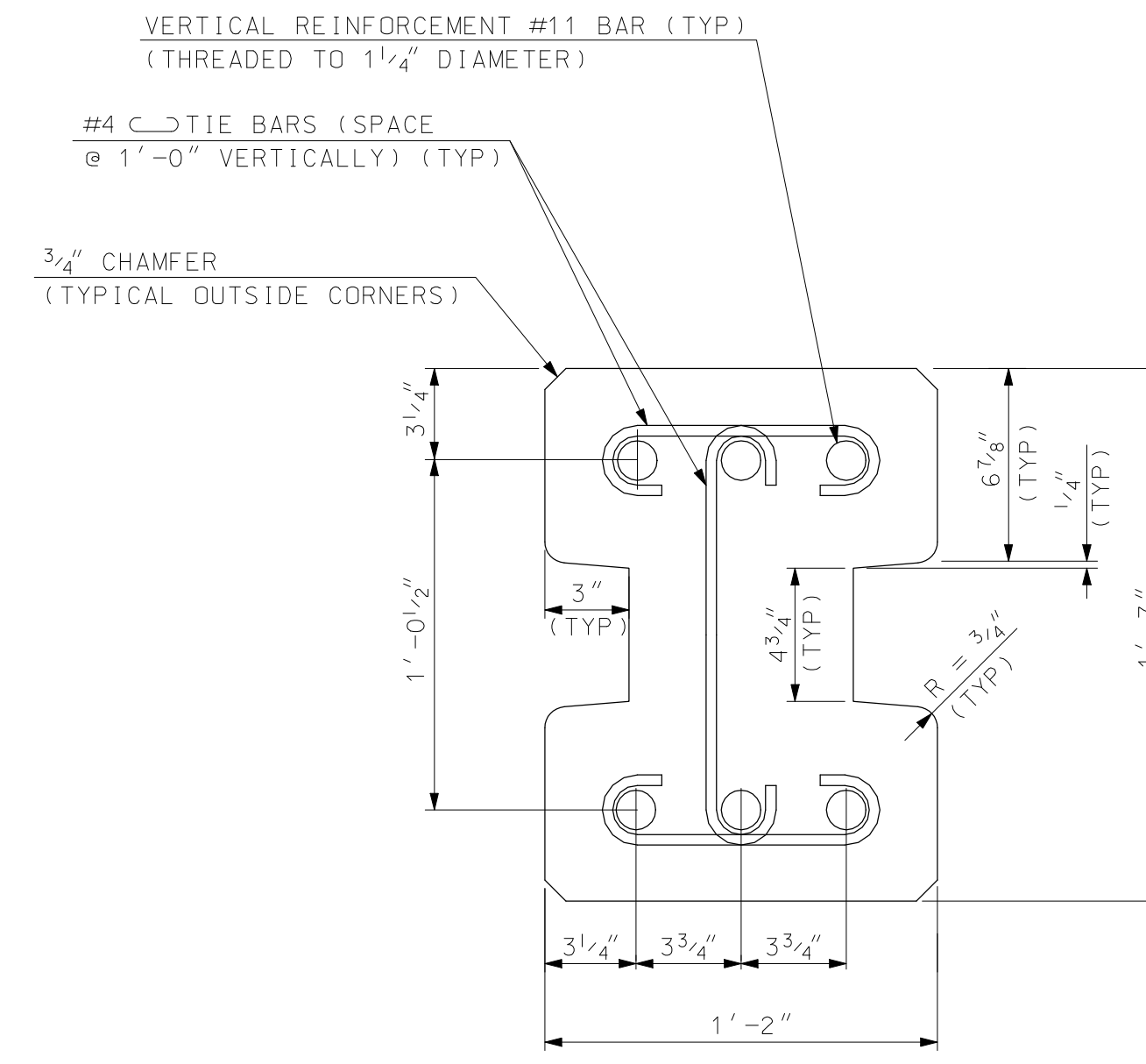


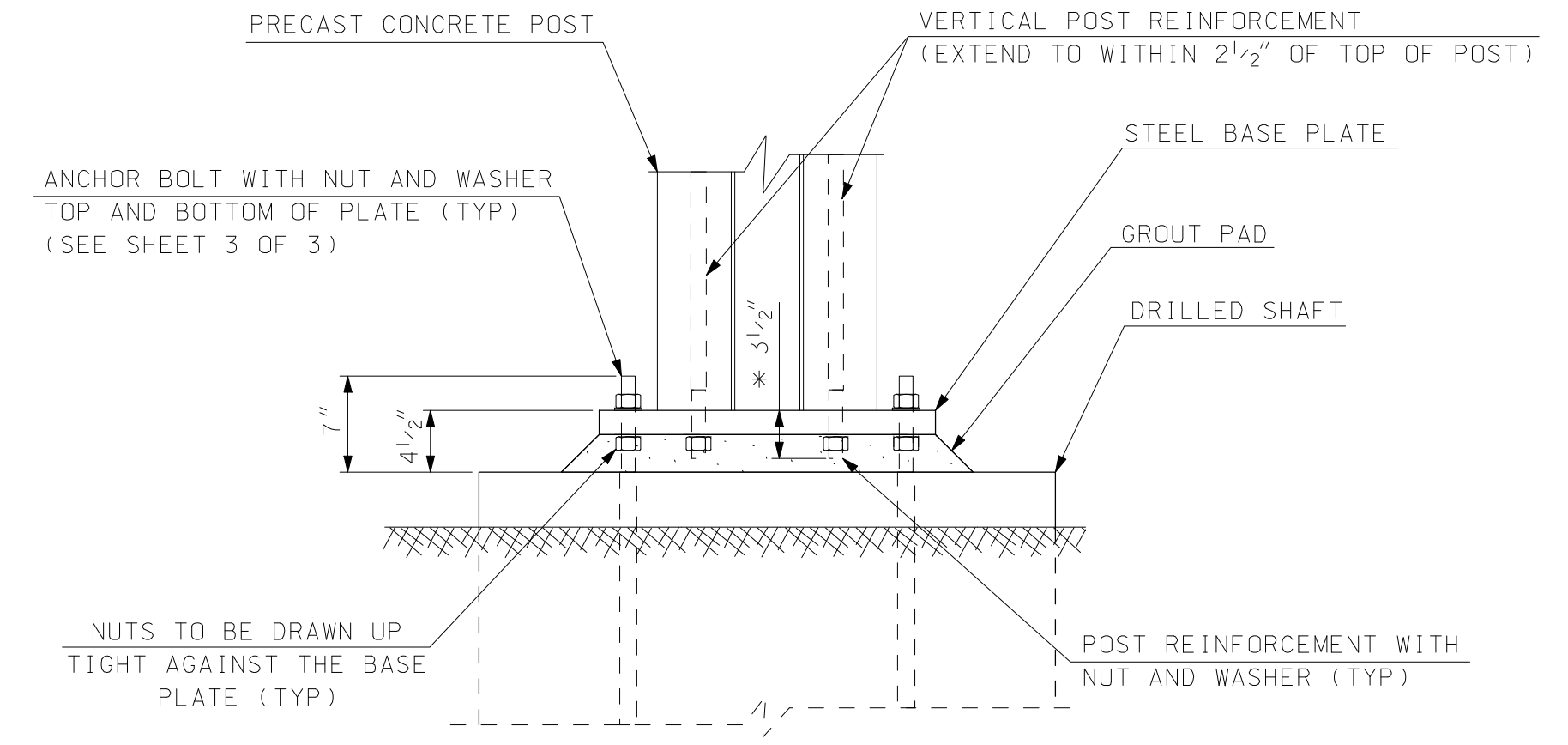
POST SECTION DETAIL  
for WALL HEIGHT UP TO 10'  
SCALE: 2" = 1'-0"



POST SECTION DETAIL  
for WALL HEIGHT >10' to 15'  
SCALE: 2" = 1'-0"



POST SECTION DETAIL  
for WALL HEIGHT >15' to 25'  
SCALE: 2" = 1'-0"

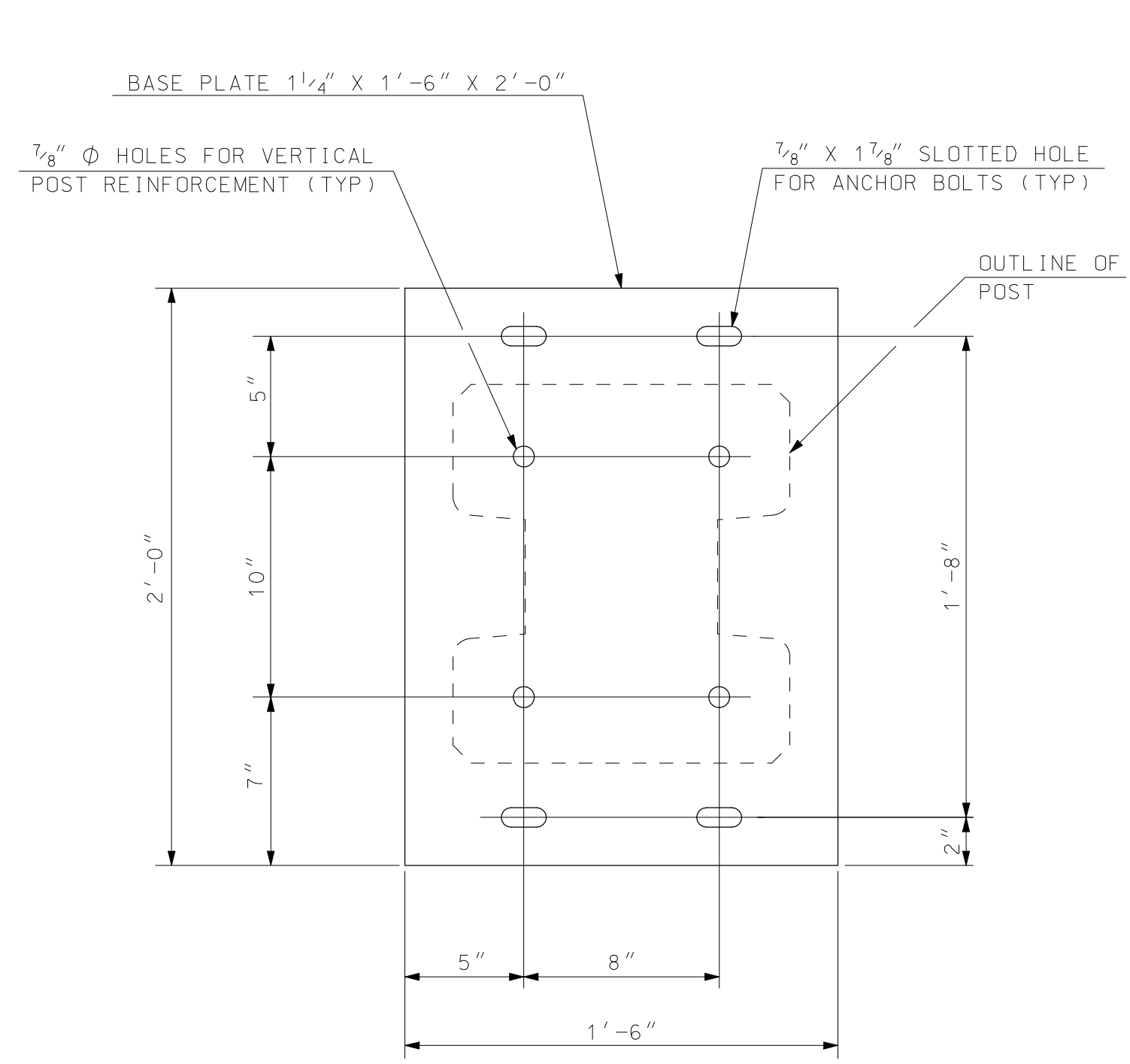


\* THE LAST 4" OF THE VERTICAL POST REINFORCEMENT SHALL BE THREADED. 3 1/2" OF THE THREADS SHALL EXTEND BEYOND THE BOTTOM OF THE POST.  
THE THREADED DIAMETERS SHALL BE : 3/4" FOR #7 BAR  
1" FOR #9 BAR  
1 1/4" FOR #11 BAR

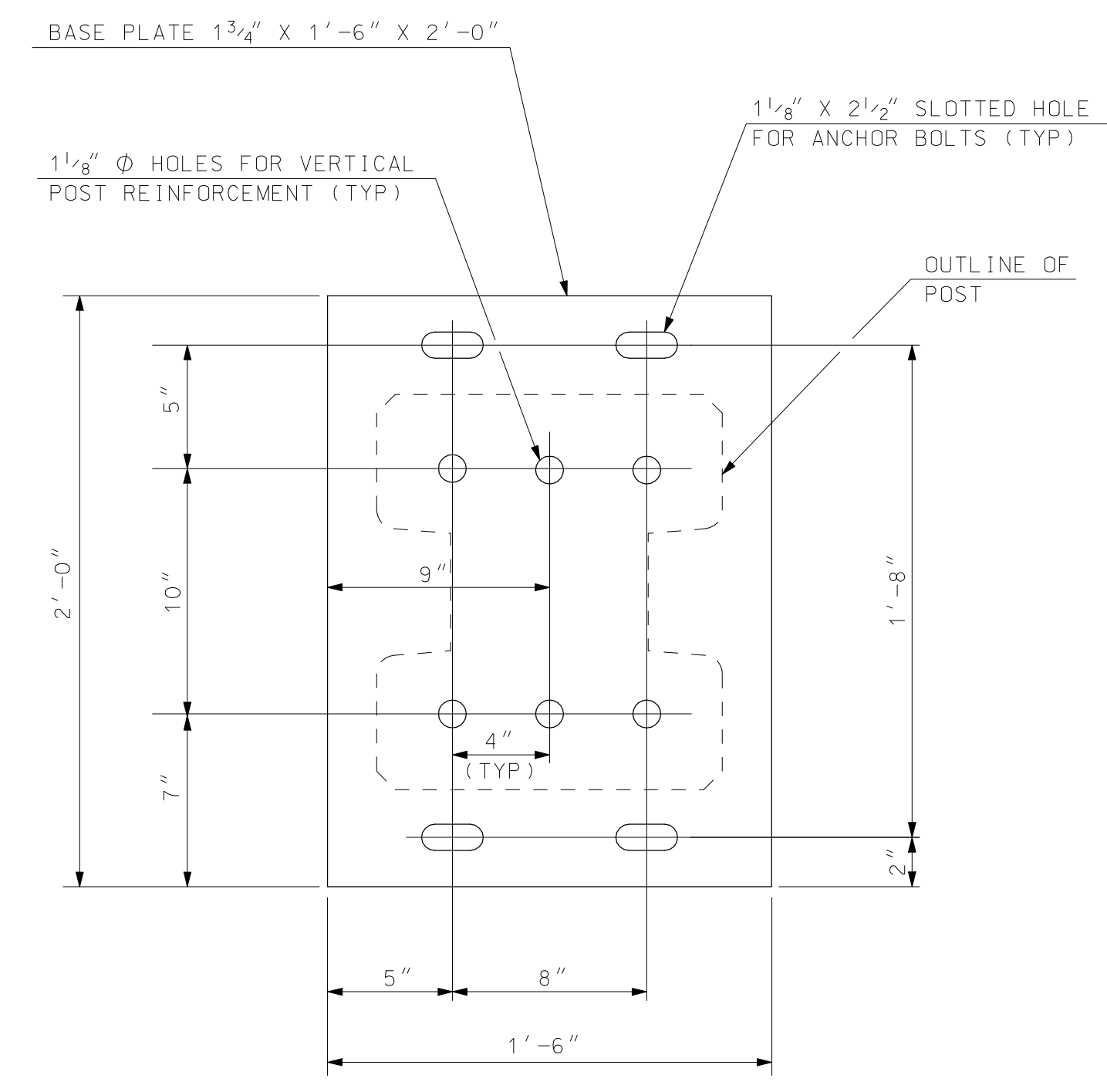
POST CONNECTION DETAIL  
SCALE: 1"=1'-0"

PRECAST CONCRETE NOTES

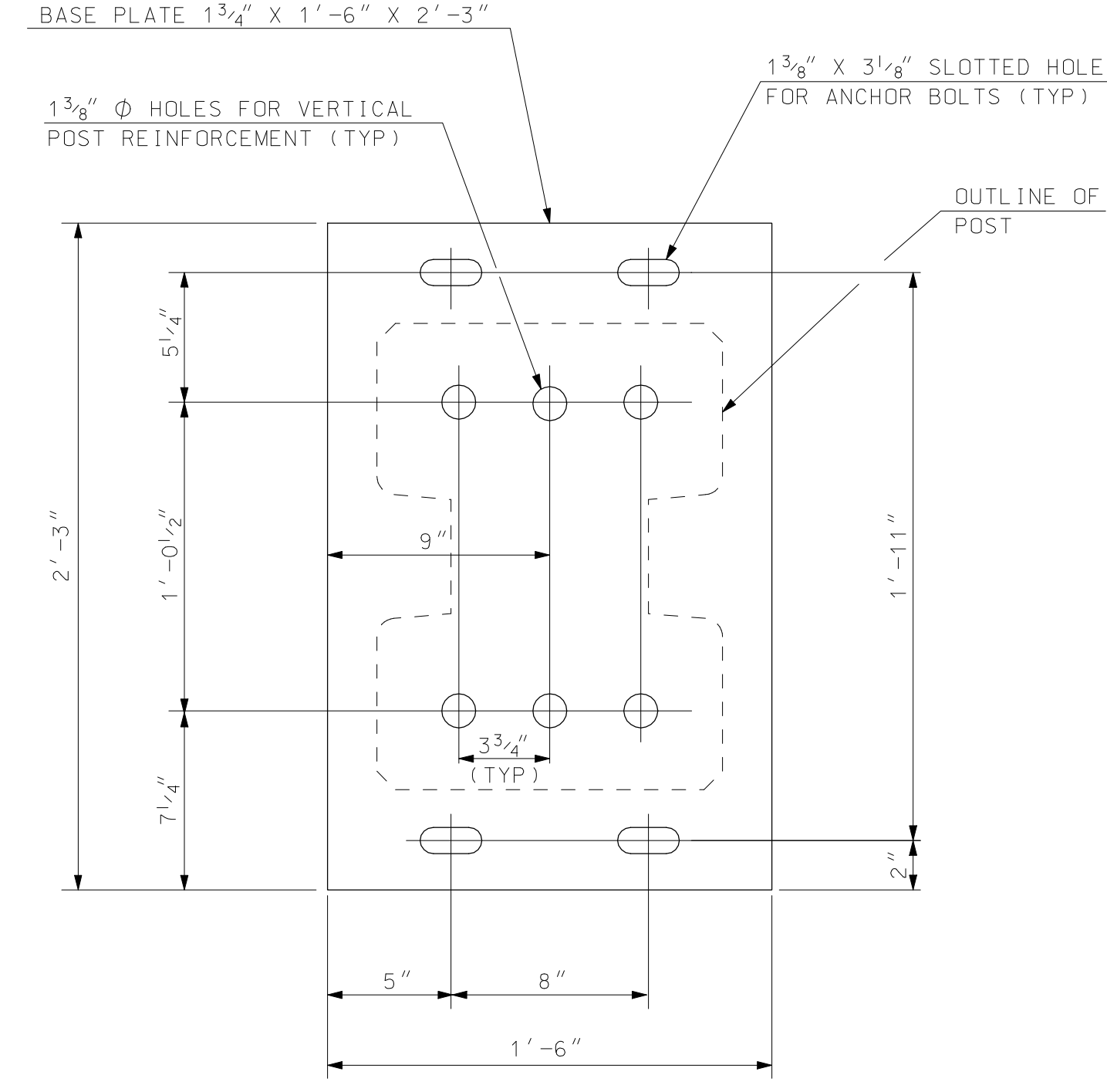
1. CONCRETE FOR THE POSTS AND LEVELING PANELS SHALL HAVE A MINIMUM 28 DAY COMPRESSIVE STRENGTH OF 4,000 PSI AND SHALL CONFORM TO SECTION 520 FOR CLASS AA CONCRETE UNLESS NOTED OTHERWISE.
2. ALL REINFORCING STEEL SHALL CONFORM TO AASHTO M 31, GRADE 60. VERTICAL REINFORCING STEEL FOR THE POSTS SHALL BE GALVANIZED AFTER FABRICATION IN ACCORDANCE WITH SECTION 594. TIE BARS FOR THE POST MAY BE GALVANIZED OR EPOXY COATED IN ACCORDANCE WITH SECTION 544.
3. VERTICAL REINFORCING STEEL FOR THE POSTS SHALL HAVE THE LAST 4" THREADED TO THE SIZE SPECIFIED ON THE PLANS IN ACCORDANCE WITH SECTION 550. 3 1/2" OF THE THREADS SHALL EXTEND BEYOND THE BOTTOM OF THE POST.
4. WELDED WIRE FABRIC FOR THE LEVELING PANELS SHALL CONFORM TO SECTION 544
5. COAT ALL SURFACES OF THE PRECAST CONCRETE POSTS AND LEVELING PANELS WITH WATER REPELLENT (SILANE-SILOXANE) IN ACCORDANCE WITH SECTION 534.
6. CLEAR COVER FOR REINFORCEMENT SHALL BE A MIN. OF 2".
7. AFTER INSTALLATION OF POSTS AND LEVELING PANELS, ALL RECESSED INSTALLATION DEVICES SHALL BE FILLED WITH NON-SHRINK GROUT.



POST BASE PLATE DETAIL  
for WALL HEIGHT UP TO 10'  
SCALE: 2" = 1'-0"



POST BASE PLATE DETAIL  
for WALL HEIGHT >10' to 15'  
SCALE: 2" = 1'-0"



POST BASE PLATE DETAIL  
for WALL HEIGHT >15' to 25'  
SCALE: 2" = 1'-0"

BASE PLATE AND ANCHOR BOLT NOTES

1. STRUCTURAL STEEL FOR BASE PLATES SHALL CONFORM TO AASHTO M 270, GRADE 50.
2. NUTS SHALL CONFORM TO AASHTO M 291, CLASS 10S (GRADE DH). WASHERS SHALL CONFORM TO AASHTO M 293, TYPE 1.
3. ANCHOR BOLTS SHALL CONFORM TO AASHTO M 31, GRADE 60, AND SHALL BE FABRICATED IN ACCORDANCE WITH SECTION 550.
4. ALL STEEL COMPONENTS SHALL BE GALVANIZED AFTER FABRICATION IN ACCORDANCE WITH SECTION 594.
5. AFTER POST INSTALLATION GROUT THE AREA UNDERNEATH THE POSTS WITH APPROVED HIGH STRENGTH, NON-SHRINK GROUT. THE SLOTTED HOLES IN BASE PLATES SHALL BE FILLED FLUSH WITH GROUT.

STATE OF NEW HAMPSHIRE									
DEPARTMENT OF TRANSPORTATION * BUREAU OF BRIDGE DESIGN									
TOWN		BRIDGE NO.			STATE PROJECT				
LOCATION									
<b>WOOD PANEL SOUNDWALL (2 of 3)</b>								BRIDGE SHEET	
								OF	
REVISIONS AFTER PROPOSAL		BY	DATE	CHECKED	BY	DATE	FILE NUMBER		
		DESIGNED	NHDOT	9/05	CHECKED	NHDOT	9/05		
		DRAWN	SMG/RAJ	2/03	CHECKED	ACJ/ABH	9/05		
		QUANTITIES			CHECKED				
		ISSUE DATE	XX	FEDERAL PROJECT NO.		SHEET NO.		TOTAL SHEETS	
		REV. DATE							

SUBDIRECTORY	DGN LOCATOR	SHEET SCALE
English/SNDWALL	SOUND2	AS NOTED