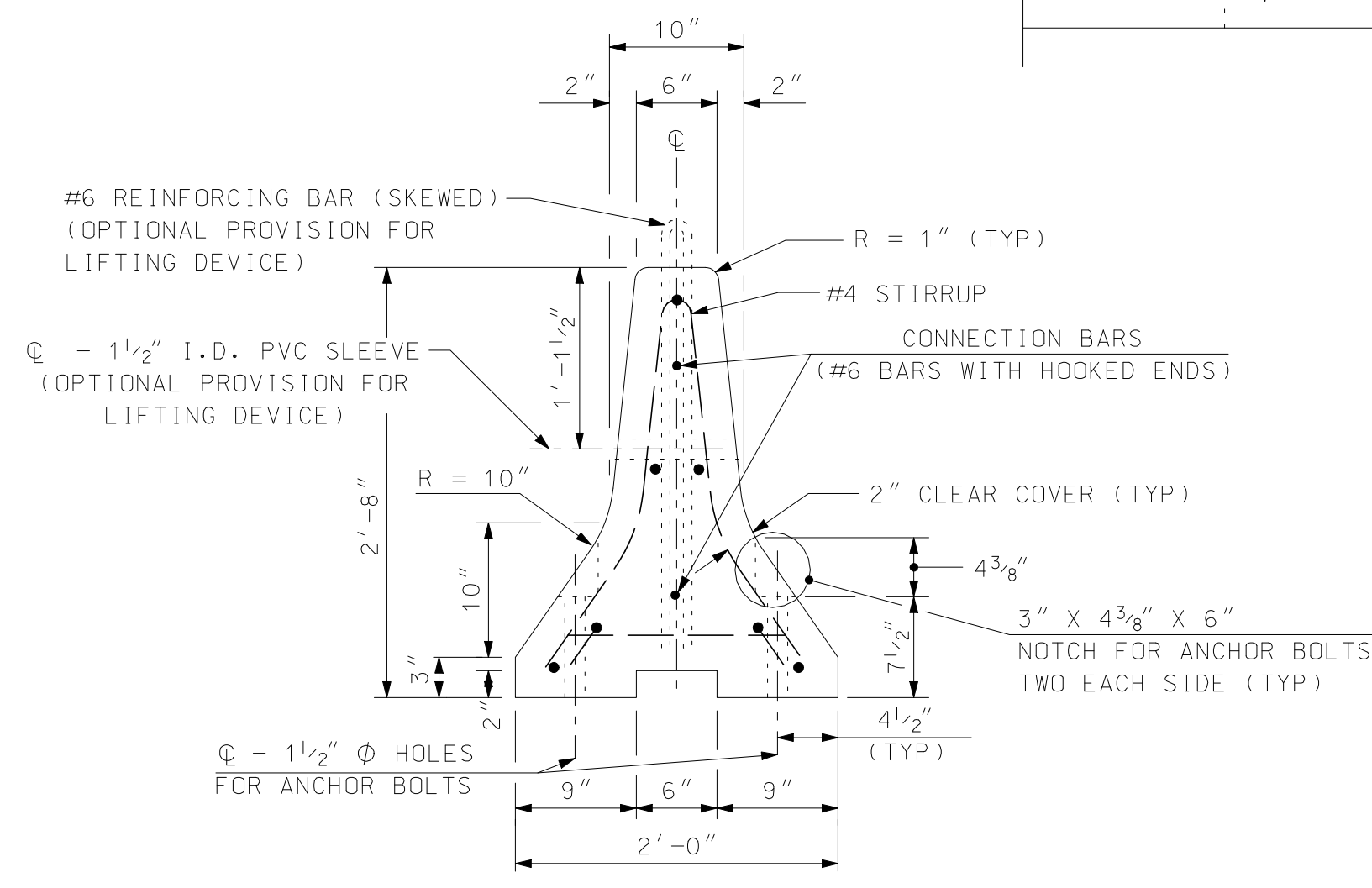


PLAN

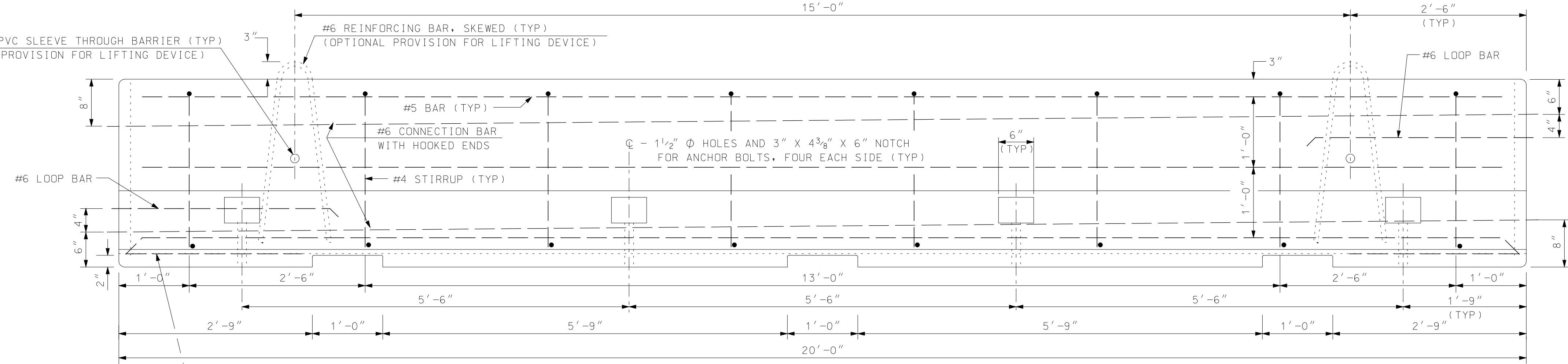
SCALE: 1" = 1'-0"



TYPICAL SECTION

SCALE: 1" = 1'-0"

EXTRA #5 BAR IN FRONT OF ANCHOR BOLT HOLE, FOUR EACH SIDE (TYP)



ELEVATION

SCALE: 1" = 1'-0"

EXTRA #5 BAR IN FRONT OF ANCHOR BOLT HOLE, FOUR EACH SIDE (TYP)

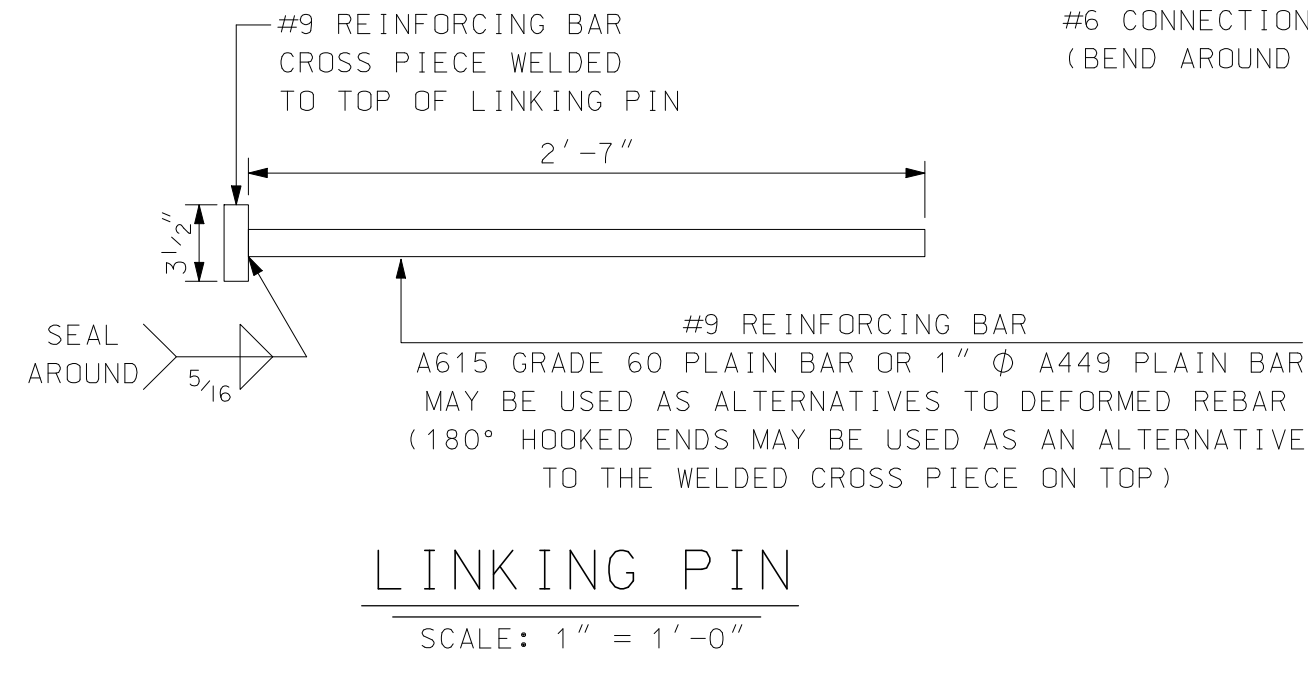
GENERAL NOTES

1. THE PORTABLE CONCRETE BARRIER DETAILS, AS SHOWN ON THIS SHEET, ARE IN COMPLIANCE WITH THE REQUIREMENTS OF NCHRP REPORT 350.
2. CONCRETE BARRIER SHALL BE FURNISHED BY THE CONTRACTOR AND PAID AS ITEM 606.4175, PORTABLE CONCRETE BARRIER FOR TRAFFIC CONTROL - ANCHORED. END TREATMENTS AND CONNECTIONS TO EXISTING BARRIERS, WHEN REQUIRED, SHALL BE SUBSIDIARY TO ITEM 606.4175.
3. THE CONTRACTOR SHALL FURNISH AND INSTALL APPROVED RETROREFLECTIVE DELINEATORS AT 25-FOOT INTERVALS ALONG THE TOP AND/OR ONE FOOT DOWN THE SIDE OF THE PORTABLE CONCRETE BARRIER, SUBSIDIARY TO ITEM 606.4175. THE COLOR OF DELINEATORS SHALL, IN ALL CASES, CONFORM TO THE COLOR OF EDGE LINE MARKINGS. DELINEATORS SUPPLEMENT, BUT DO NOT REPLACE, THE NEED FOR RETROREFLECTIVE SOLID EDGE LINE MARKINGS.
4. UNPROTECTED OPENINGS IN PORTABLE CONCRETE BARRIER WILL NOT BE PERMITTED, UNLESS SPECIFICALLY AUTHORIZED BY THE ENGINEER.
5. OTHER BARRIER CONFIGURATIONS AND END CONNECTIONS ARE SUBJECT TO APPROVAL BY THE ENGINEER. BARRIERS OF DIFFERENT GEOMETRIC SHAPES SHALL NOT BE MIXED ON THE SAME RUN.
6. PLACE RETROREFLECTORIZED DRUMS OR BARRICADES IN ACCORDANCE WITH 6C-2 OF THE MUTCD IN ADVANCE OF PORTABLE CONCRETE BARRIER TO WARN AND ALERT DRIVERS.

MATERIAL NOTES

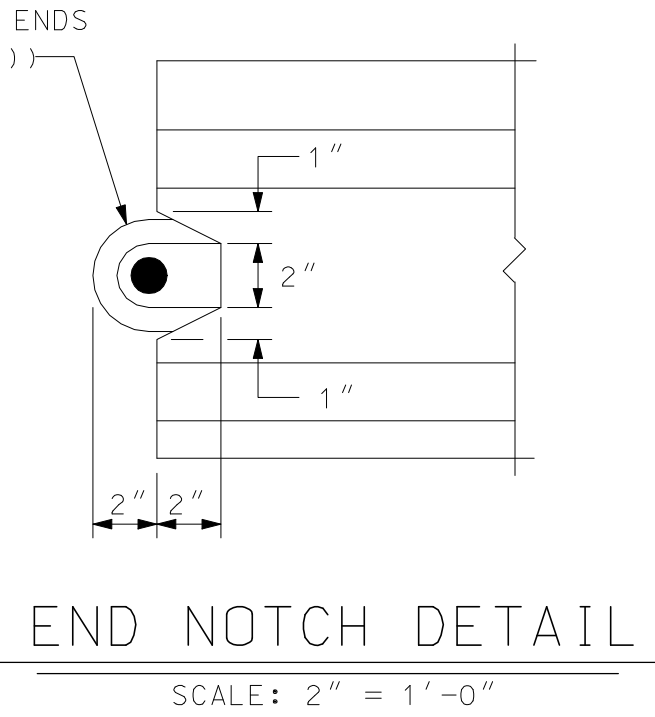
1. BARRIERS SHALL BE LIGHT COLORED CLASS "AA" CONCRETE HAVING A MINIMUM 28 DAY COMPRESSION STRENGTH OF 4,000 PSI. BARRIERS SHALL HAVE A SMOOTH UNIFORM SURFACE FREE OF DEFECTS AND IRREGULARITIES. CASTING DATE SHALL BE SHOWN ON BARRIER. ALL EXPOSED EDGES OF CONCRETE SHALL BE CHAMFERED 3/4" UNLESS OTHERWISE NOTED.
2. ALL REINFORCING STEEL SHALL BE AASHTO M31 (ASTM-A615) GRADE 60. REINFORCEMENT SHOWN IS THE MINIMUM REQUIRED.
3. EACH BARRIER UNIT SHALL INCLUDE ONE LINKING PIN.
4. LIFTING OPTIONS SHOWN ARE ADVISORY ONLY. IT SHALL BE THE CONTRACTORS' RESPONSIBILITY TO PROVIDE ADEQUATE LIFTING POINTS ON EACH BARRIER.
5. CONNECTING DEVICES SHALL BE COMPATIBLE WITH OTHER UNITS AND SHALL ALLOW PLACEMENT ON A 110' RADIUS. BARRIERS OF DIFFERING GEOMETRIC SHAPES SHALL NOT BE MIXED.
6. DELINEATORS SHALL BE ATTACHED TO THE BARRIER USING AN APPROVED ADHESIVE MATERIAL OR BY BOLTS AND ANCHORS AS SHOWN ON STANDARD NO. DL-1.

PORTABLE CONCRETE BARRIER REINFORCING SCHEDULE				
DESCRIPTION	SIZE	NO.	UNBENT LENGTH	TYPE
CONNECTION BARS	#6	2	24'-9 1/2"	
BOTTOM LONGITUDINAL	#5	2	19'-10"	
CENTER & TOP LONGITUDINAL	#5	3	19'-4"	
BOTTOM TRANSVERSE	#5	8	1'-4"	
STIRRUPS	#4	8	5'-0"	
EXTRA ANCHOR HOLE BARS	#5	8	2'-5"	
LIFTING DEVICE (OPTIONAL)	#6	2	5'-4"	
LOOP BAR	#6	2	6'-10 1/4"	



LINKING PIN

SCALE: 1" = 1'-0"



END NOTCH DETAIL

SCALE: 2" = 1'-0"

STATE OF NEW HAMPSHIRE									
DEPARTMENT OF TRANSPORTATION * BUREAU OF BRIDGE DESIGN									
TOWN	BRIDGE NO.			STATE PROJECT					
LOCATION									
PORTABLE CONCRETE BARRIER									BRIDGE SHEET
REVISIONS AFTER PROPOSAL									OF
BY	DATE	BY	DATE	BY	DATE	BY	DATE	BY	DATE
DESIGNED	NHDOT	9/02	CHECKED	NHDOT	11/02	CHECKED	NHDOT	CHECKED	NHDOT
DRAWN	PJP/GMC	9/02	CHECKED	NHDOT	11/02	CHECKED	NHDOT	CHECKED	NHDOT
QUANTITIES			CHECKED			FILE NUMBER			
ISSUE DATE	----	FEDERAL PROJECT NO.			SHEET NO.		TOTAL SHEETS		
REV. DATE	7/1/04								

SUBDIRECTORY	DGN LOCATOR	SHEET SCALE
English/LAN-CLOS	PCB4-3LP20	AS NOTED