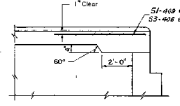
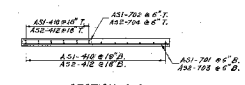


DECK AND APPROACH SLAB REINFORCEMENT
Scale: 1/8" = 1'-0"



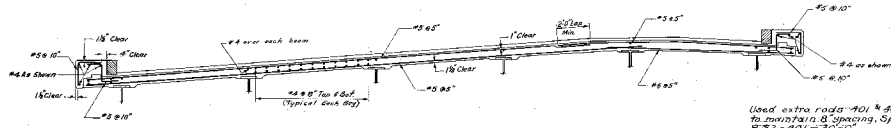
SECTION B-B
Scale: 1/2" = 1'-0"



SECTION A-A
Scale: 1/8" = 1'-0"

Note: Bars to have 2" cover except as noted

Item No.	Description	Units	Quantity	Unit Price
32.1A5	Concrete Class A	26	22	C.Y.
35	Reinforcing Steel	5,100	10,320	Lbs.



TYPICAL CROSS SECTION
Scale: 1/4" = 1'-0"

Used extra rods #01 & #02
to maintain 6" spacing, Spacing 2, 3, 3 parts sides
B 52-401-30'-0"
A 52-401-30'-0"
A 52-402-70'-0"
B 52-402-77'-0"

STATE OF NEW HAMPSHIRE	
DEPARTMENT OF PUBLIC WORKS AND HIGHWAYS	
TOWN SALEM	BRIDGE NO. 030/056
FEDERAL PROJECT 1-93-1(9-1)	STATE PROJECT P-3689-0
SPUR LINE OVER INTERSTATE 93 SOUTHBOUND	
DECK AND APPROACH SLAB REINFORCEMENT	
DESIGNED BY	DATE
CHECKED BY	DATE
APPROVED BY	DATE
DATE	DATE

THE CLARKESON ENGINEERING CO., INC.
CONSULTING ENGINEERS
BOSTON MASSACHUSETTS

DATE	BY	REVISION
9/28	RET	CHANGED W.M.
9/28	RET	CHANGED W.M.
10/19	CH	CHANGED C.E.C.

DATE	BY	REVISION
9/28	RET	CHANGED W.M.
9/28	RET	CHANGED W.M.
10/19	CH	CHANGED C.E.C.